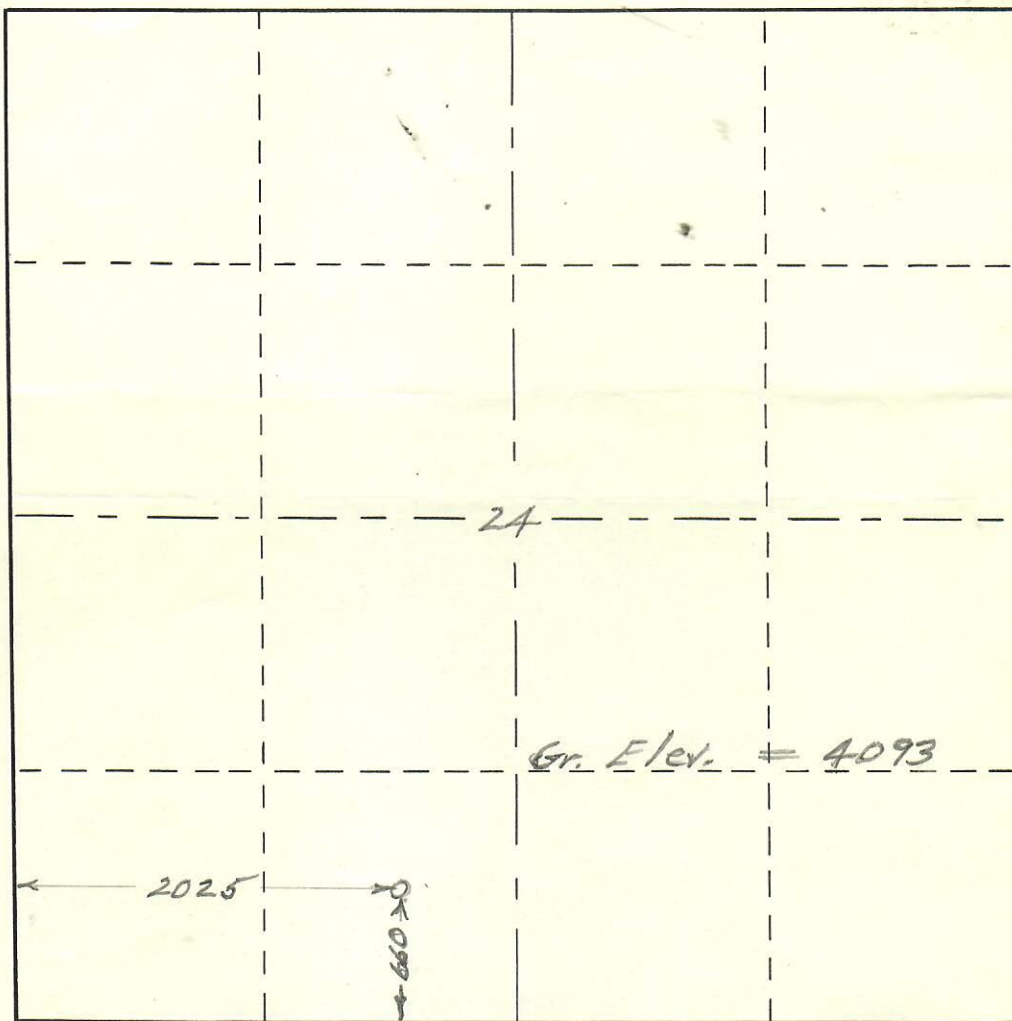




00817777

R. 53 W

T.
9
N

Scale ... 1" = 1000'

Powers Elevation Company of Casper, Wyoming
has in accordance with a request from Mr. Moinous
for McDermott & Barnhart determined the
Location of #1 Mentgen
to be C SE SW Section 24 Township 9 N
Range 53 W of the 6th Principal Meridian
Logan County, Colo

The above Plat shows the location of the well site
in said section.

Powers Elevation Company

by: Thomas E Nelson, Engr.

Date: 7-5-54