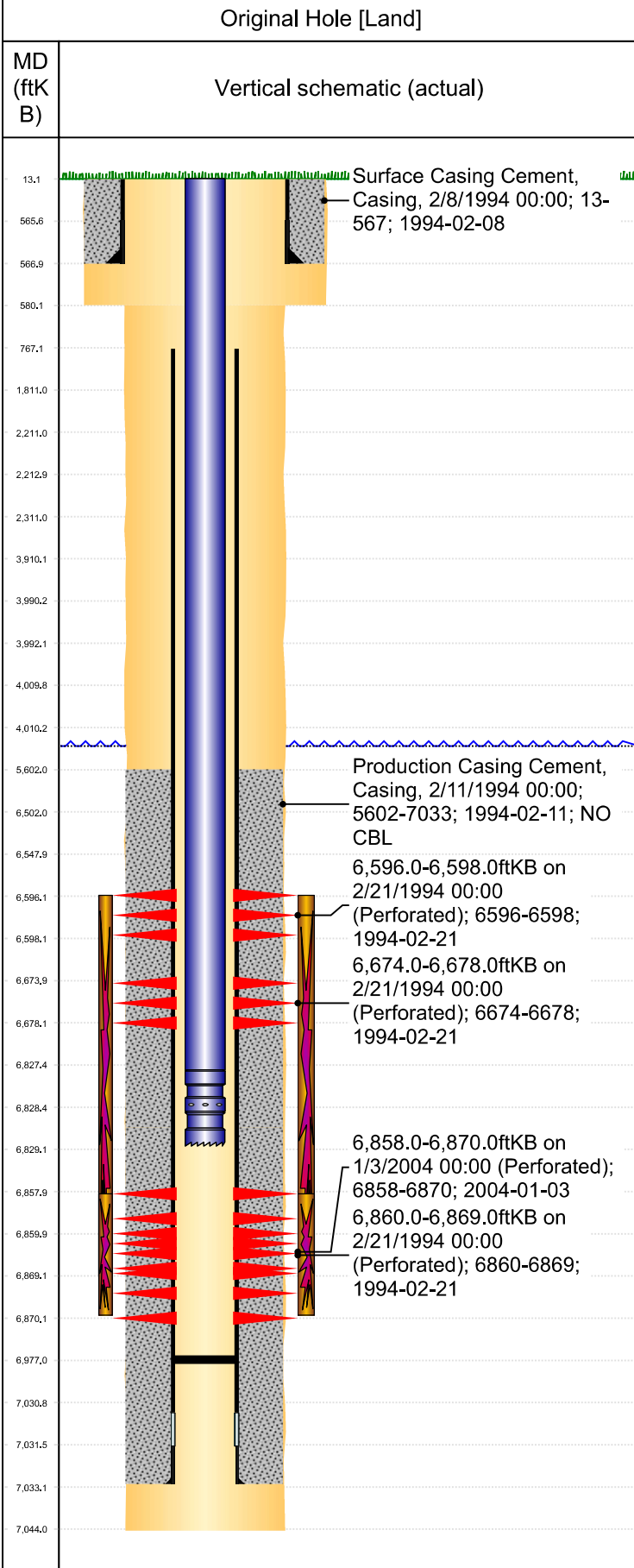




# P&A Wellbore For State

Well Name: STATE 16-1414



Well Header									
Surface UWI 0512317979		Business Unit Rockies		Gov Auth Dist		Prod Tree Loc Land			
Orig. KB to Gnd (ft) 13.00		Original Spud Date 2/7/1994		Abandon Date		Well Sub-Status PR		High...	
								N	
Comment LIMITED ENTRY. NO CBL RAN. STATE SHOW SHUT IN SINCE MAY 2017.									
Surface Location (Congressional)									
Qtr 3 SE	Qtr 4 SW	Section 16	Twonshp 4	Twonsh... N	Range 64	Rng E/... W	Latitude (°) 40.30635284 5	Longitude (°) -104.558511167	
Wellbore Sections									
Section Des		Hole Size (in)		Top Depth (ftKB)		Btm Depth (ftKB)			
SURFACE		12 1/4		13.0		580.0			
PRODUCTION		7 7/8		580.0		7,044.0			
Casing Strings									
Csg Des		Run Date		OD (in)	Wt/Len (lb/ft)	Grade	Top Depth (MD) (ftKB)	Set Depth (MD) (ftKB)	
Surface		2/7/1994		8 5/8	23.00	M-75	13	567	
Production Casing		2/12/1994		3 1/2	7.70		13	7033	
Cement									
Des		Start Date		Top (ftKB)		Btm (ftKB)			
SURFACE CASING CEMENT		2/8/1994		13.0		567.0			
PRODUCTION CASING CEMENT		2/11/1994		5,602.0		7,033.0			
Zone Statuses									
Zone Name	Status Date	Status	Fluid Type	Job			Prod Method		
CODELL	3/4/1994	PR		DRILLING/COMPLETION - ORIGINAL, 2/7/1994...			Flowing		
CODELL	1/9/2004	PR		RE-FRAC, 12/31/2003 00:00			Flowing		
NIOBRARA	3/4/1994	PR		DRILLING/COMPLETION - ORIGINAL, 2/7/1994...			Flowing		
Perforation Data									
Linked Zone		Explosive Type	Entered Shot Total	Top (ftKB)	Btm (ftKB)	Date			
NIOBRARA, Original Hole		A	2	6,596.0	6,598.0	2/21/1994			
NIOBRARA, Original Hole		B	4	6,674.0	6,678.0	2/21/1994			
CODELL, Original Hole			48	6,858.0	6,870.0	1/3/2004			
CODELL, Original Hole			9	6,860.0	6,869.0	2/21/1994			
Stim/Frac Stage									
Zone		Start Date		Top (ftKB)		Btm (ftKB)			
NIOBRARA-CODELL, Original Hole		2/22/1994		6,596.0		6,869.0			
CODELL, Original Hole		1/8/2004		6,858.0		6,870.0			
Other In Hole									
Run Date		Des		Make	OD (in)	Top (ftKB)	Btm (ftKB)		
Logs									
Date		Type			Depth Top (MD) (ftKB)	Btm (ftKB)			
2/12/1994		INDUCTION			567	7,042.0			
2/21/1994		GAMMA RAY			6,490	6,977.0			
Wellbore Plug Back Total Depths									
Date		Type	Com			PBTD (ftKB)			
2/12/1994		FLOAT COLLAR	TOP OF FLOAT COLLAR			6,980			
1/24/2004		FILL	CLEAN DOWN TO 6977', ROLL HOLE CLEAN			6,977			