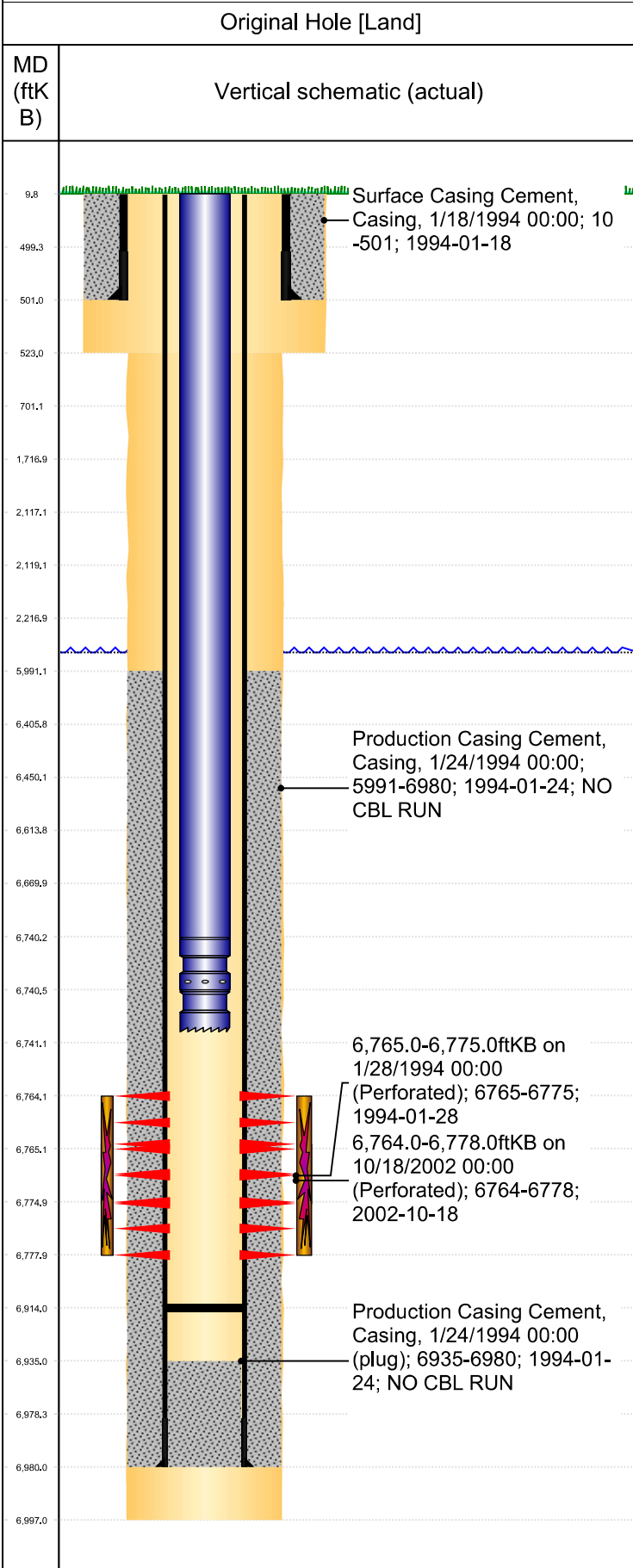




P&A Wellbore For State

Well Name: LOCKMAN 10-1514



Well Header									
Surface UWI 0512317733		Business Unit Rockies		Gov Auth Dist		Prod Tree Loc Land			
Orig. KB to Gnd (ft) 10.00		Original Spud Date 1/18/1994		Abandon Date		Well Sub-Status PR		High... N	
Comment TOC CALCULATED, NEEDS CBL									
Surface Location (Congressional)									
Qtr 3 SW	Qtr 4 SE	Section 10	Twonshp 4	Twonsh... N	Range 64	Rng E/... W	Latitude (°) 40.32171784	Longitude (°) -104.533637908	
Wellbore Sections									
Section Des		Hole Size (in)		Top Depth (ftKB)		Btm Depth (ftKB)			
SURFACE		9 7/8		10.0		523.0			
PRODUCTION		6 1/4		523.0		6,997.0			
Casing Strings									
Csg Des		Run Date		OD (in)	Wt/Len (lb/ft)	Grade	Top Depth (MD) (ftKB)	Set Depth (MD) (ftKB)	
Surface		1/18/1994		7	23.00	J-55	10	501	
Production Casing		1/24/1994		3 1/2	7.70	B-70	10	6980	
Cement									
Des		Start Date		Top (ftKB)		Btm (ftKB)			
SURFACE CASING CEMENT		1/18/1994		10.0		501.0			
PRODUCTION CASING CEMENT		1/24/1994		5,991.0		6,980.0			
Zone Statuses									
Zone Name	Status Date	Status	Fluid Type	Job			Prod Method		
CODELL	10/26/2002	PR		RE-FRAC, 10/16/2002 00:00					
CODELL	2/22/2010	PR	Water				Flowing		
NIOBRARA	2/23/1994	PR	Oil				Flowing		
NIOBRARA	2/22/2010	PR	Water				Flowing		
Perforation Data									
Linked Zone		Explosive Type	Entered Shot Total	Top (ftKB)	Btm (ftKB)	Date			
CODELL, Original Hole			56	6,764.0	6,778.0	10/18/2002			
CODELL, Original Hole			20	6,765.0	6,775.0	1/28/1994			
Stim/Frac Stage									
Zone		Start Date		Top (ftKB)		Btm (ftKB)			
CODELL, Original Hole		10/25/2002		6,764.0		6,778.0			
CODELL, Original Hole		1/31/1994		6,765.0		6,775.0			
Other In Hole									
Run Date	Des		Make	OD (in)	Top (ftKB)	Btm (ftKB)			
Logs									
Date	Type			Depth Top (MD) (ftKB)	Btm (ftKB)				
1/24/1994	COMPENSATED DENSITY			4,090	6,995.0				
1/24/1994	INDUCTION			504	6,995.0				
1/28/1994	GAMMA RAY			6,350	6,910.0				
Wellbore Plug Back Total Depths									
Date	Type	Com			PBTD (ftKB)				
1/25/1994	GUIDE SHOE	GUIDE SHOE			6,935				
1/28/1994	FILL	DEPTH LOGGER			6,914				