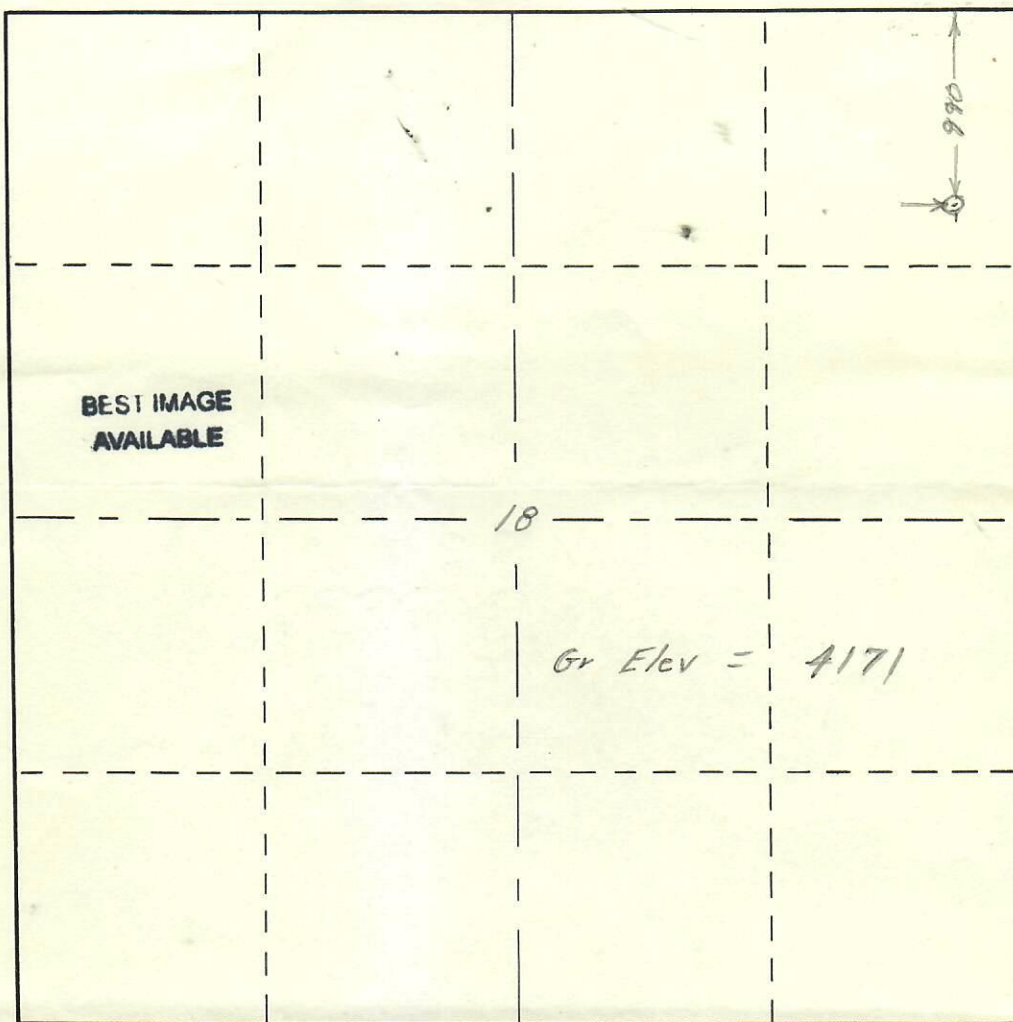




R. 53W



T.  
9  
N

Scale ... 1" = 1000'

Powers Elevation Company of Casper, Wyoming  
has in accordance with a request from Mr Paul Speck  
for Mc Dermott & Barnhart determined the  
Location of #2 Britton  
to be SE NE NE Section 18 Township 9N  
Range 53W of the Sixth Principal Meridian  
Logan County, Colo

The above Plat shows the location of the well site  
in said section.

Powers Elevation Company

by: Thomas E Nelson

Date: 8-17-54