

Project: Rio Blanco County, CO
 Site: PCU B27 197 Pad
 Well: RNPU B27 FED 25B-22 197
 Wellbore: OH
 Design: Prelim #1
 Latitude: 39.941166
 Longitude: -108.268579
 Ground Level: 6510.0
 RKB @ 6540.0usft (30')

FORMATION TOP DETAILS

TVDPath	MDPath	Formation
2479.0	2563.9	ORANGE_MARKER
2626.0	2718.9	WASATCH
5584.0	5836.9	WASATCH_G_ZONE
6067.0	6346.1	FORT_UNION
7583.0	7922.0	OHIO_CREEK
8333.0	8672.1	WILLIAMS_FORK
11308.0	11647.5	CAMEO
11858.0	12197.6	ROLLINS
11930.0	12269.6	COZZETTE
12530.0	12869.7	Corcoran

REFERENCE INFORMATION

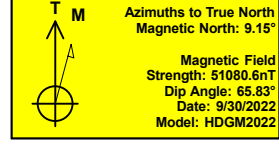
Co-ordinate (N/E) Reference: Well RNPU B27 FED 25B-22 197 - Slot 25B-22, True North
 Vertical (TVD) Reference: RKB @ 6540.0usft (30')
 Section (VS) Reference: Slot - 25B-22(0.0N, 0.0E)
 Measured Depth Reference: RKB @ 6540.0usft (30')
 Calculation Method: Minimum Curvature

WELL DETAILS: RNPU B27 FED 25B-22 197

+N/-S	+E/-W	Northing	Easting	Latitude	Longitude
0.0	0.0	14516342.70	2406081.50	39.941166	-108.268579

PROJECT DETAILS: Rio Blanco County, CO

Geodetic System: Universal Transverse Mercator (US Survey Feet)
 Datum: NAD 1927 - Western US
 Ellipsoid: Clarke 1866
 Zone: Zone 12N (114 W to 108 W)
 System Datum: Mean Sea Level

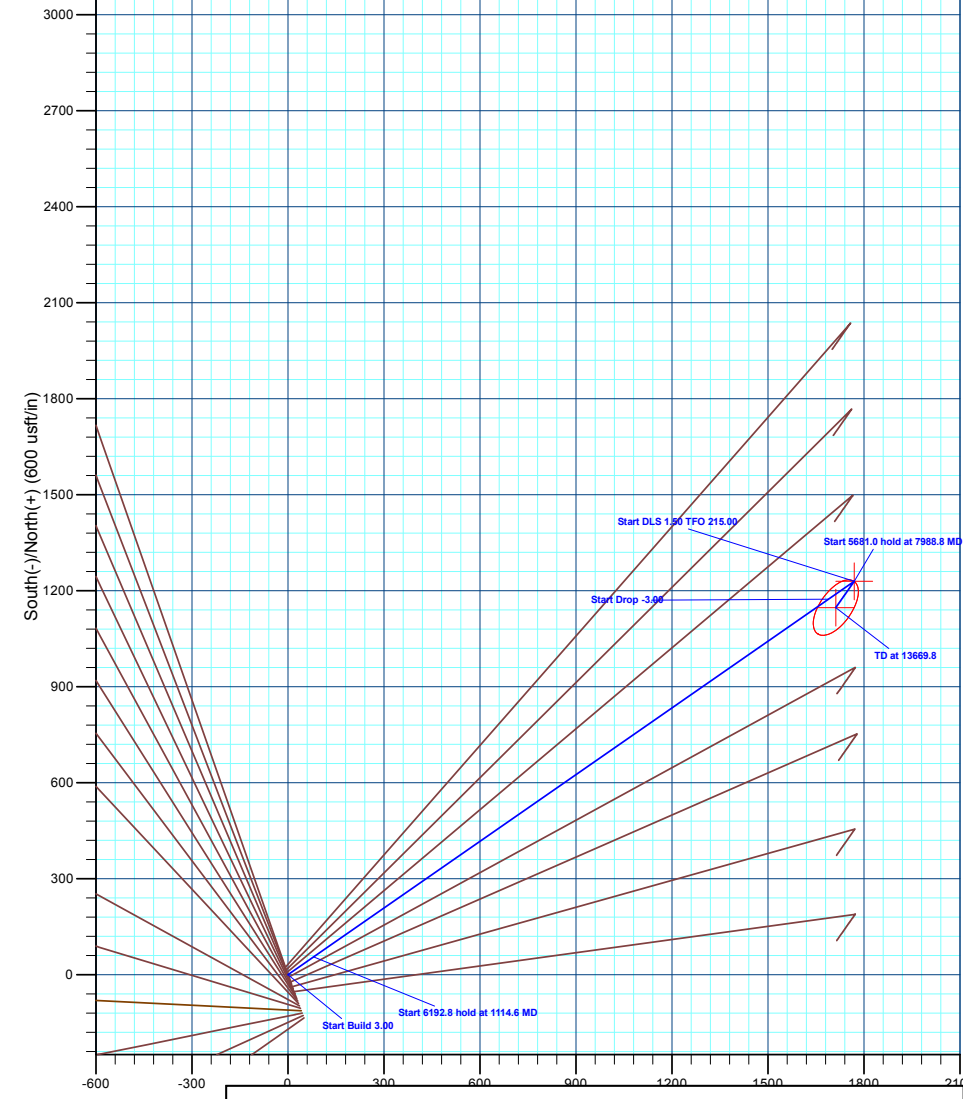
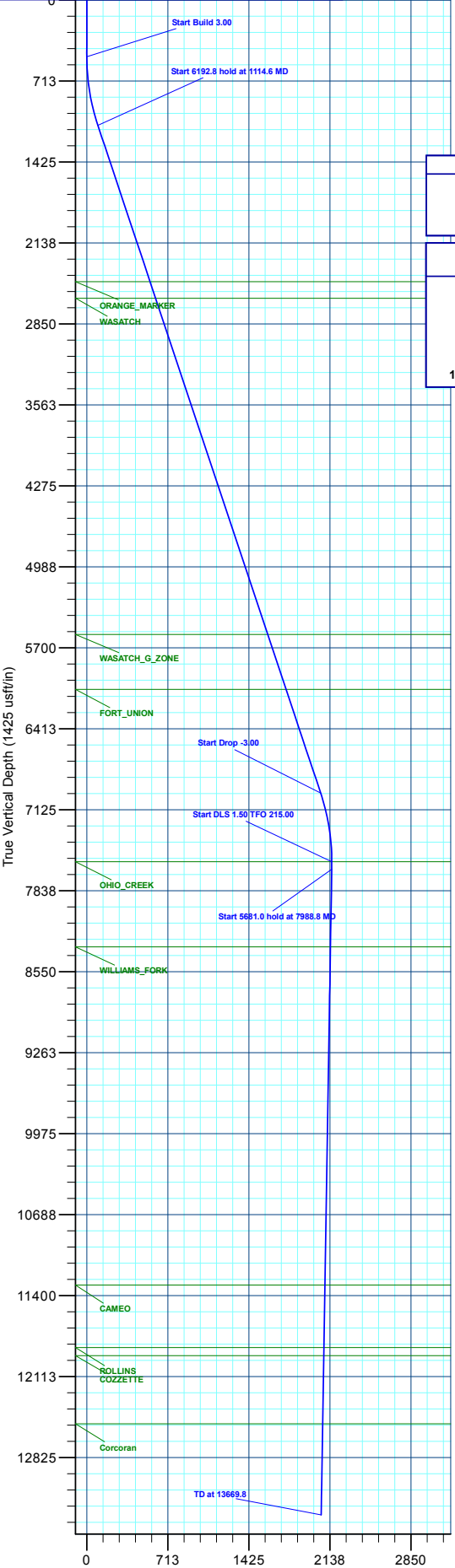


DESIGN TARGET DETAILS

Name	TVD	+N/-S	+E/-W	Northing	Easting	Latitude	Longitude
25B-22 - OHCR	7583.0	1229.2	1769.6	14517625.53	2407812.63	39.944539	-108.262269
25B-22 - PBHL	13330.0	1147.3	1712.2	14517541.90	2407757.80	39.944314	-108.262474

SECTION DETAILS

MD	Inc	Azi	TVD	+N/-S	+E/-W	Dleg	TFace	VSect	Annotation
0.0	0.00	0.00	0.0	0.0	0.0	0.00	0.00	0.0	
500.0	0.00	0.00	500.0	0.0	0.0	0.00	0.00	0.0	Start Build 3.00
1114.6	18.44	55.21	1104.0	55.9	80.5	3.00	55.21	98.0	Start 6192.8 hold at 1114.6 MD
7307.4	0.00	55.21	6979.0	1173.3	1689.1	0.00	0.00	2056.3	Start Drop -3.00
7922.0	0.00	0.00	7583.0	1229.2	1769.6	3.00	180.00	2154.3	Start DLS 1.50 TFO 215.00
7988.8	1.00	215.00	7649.8	1228.7	1769.3	1.50	215.00	2153.8	Start 5681.0 hold at 7988.8 MD
13669.8	1.00	215.00	13330.0	1147.3	1712.2	0.00	0.00	2061.1	TD at 13669.8



Plan: Prelim #1 (RNPU B27 FED 25B-22 197/OH)
 Created By: Will Jircik Date: 1:55, November 02 2022



Caerus Oil & Gas

Rio Blanco County, CO

PCU B27 197 Pad

RNPU B27 FED 25B-22 197 - Slot 25B-22

OH

Plan: Prelim #1

KLX Well Planning Report

02 November, 2022



Database:	EDM 5000.1 Single User Db	Local Co-ordinate Reference:	Well RNPU B27 FED 25B-22 197 - Slot 25B-22
Company:	Caerus Oil & Gas	TVD Reference:	RKB @ 6540.0usft (30')
Project:	Rio Blanco County, CO	MD Reference:	RKB @ 6540.0usft (30')
Site:	PCU B27 197 Pad	North Reference:	True
Well:	RNPU B27 FED 25B-22 197	Survey Calculation Method:	Minimum Curvature
Wellbore:	OH		
Design:	Prelim #1		

Project	Rio Blanco County, CO		
Map System:	Universal Transverse Mercator (US Survey Fee	System Datum:	Mean Sea Level
Geo Datum:	NAD 1927 - Western US		
Map Zone:	Zone 12N (114 W to 108 W)		

Site	PCU B27 197 Pad				
Site Position:		Northing:	14,516,246.40 usft	Latitude:	39.940899
From:	Map	Easting:	2,406,120.80 usft	Longitude:	-108.268449
Position Uncertainty:	0.0 usft	Slot Radius:	13-3/16 "	Grid Convergence:	1.75 °

Well	RNPU B27 FED 25B-22 197 - Slot 25B-22					
Well Position	+N/-S	97.5 usft	Northing:	14,516,342.70 usft	Latitude:	39.941166
	+E/-W	-36.3 usft	Easting:	2,406,081.50 usft	Longitude:	-108.268579
Position Uncertainty		0.0 usft	Wellhead Elevation:		Ground Level:	6,510.0 usft

Wellbore	OH				
Magnetics	Model Name	Sample Date	Declination (°)	Dip Angle (°)	Field Strength (nT)
	HDGM2022	9/30/2022	9.15	65.83	51,080.60000000

Design	Prelim #1				
Audit Notes:					
Version:	Phase:	PLAN	Tie On Depth:	0.0	
Vertical Section:	Depth From (TVD) (usft)	+N/-S (usft)	+E/-W (usft)	Direction (°)	
	0.0	0.0	0.0	56.18	

Plan Sections											
Measured Depth (usft)	Inclination (°)	Azimuth (°)	Vertical Depth (usft)	+N/-S (usft)	+E/-W (usft)	Dogleg Rate (°/100usft)	Build Rate (°/100usft)	Turn Rate (°/100usft)	TFO (°)	Target	
0.0	0.00	0.00	0.0	0.0	0.0	0.00	0.00	0.00	0.00		
500.0	0.00	0.00	500.0	0.0	0.0	0.00	0.00	0.00	0.00		
1,114.6	18.44	55.21	1,104.0	55.9	80.5	3.00	3.00	0.00	55.21		
7,307.4	18.44	55.21	6,979.0	1,173.3	1,689.1	0.00	0.00	0.00	0.00		
7,922.0	0.00	0.00	7,583.0	1,229.2	1,769.6	3.00	-3.00	0.00	180.00	25B-22 - OHCR	
7,988.8	1.00	215.00	7,649.8	1,228.7	1,769.3	1.50	1.50	-216.91	215.00		
13,669.8	1.00	215.00	13,330.0	1,147.3	1,712.2	0.00	0.00	0.00	0.00	25B-22 - PBHL	

Database:	EDM 5000.1 Single User Db	Local Co-ordinate Reference:	Well RNPU B27 FED 25B-22 197 - Slot 25B-22
Company:	Caerus Oil & Gas	TVD Reference:	RKB @ 6540.0usft (30')
Project:	Rio Blanco County, CO	MD Reference:	RKB @ 6540.0usft (30')
Site:	PCU B27 197 Pad	North Reference:	True
Well:	RNPU B27 FED 25B-22 197	Survey Calculation Method:	Minimum Curvature
Wellbore:	OH		
Design:	Prelim #1		

Planned Survey										
Measured Depth (usft)	Inclination (°)	Azimuth (°)	Vertical Depth (usft)	+N/-S (usft)	+E/-W (usft)	Vertical Section (usft)	Dogleg Rate (°/100usft)	Build Rate (°/100usft)	Turn Rate (°/100usft)	
0.0	0.00	0.00	0.0	0.0	0.0	0.0	0.00	0.00	0.00	0.00
100.0	0.00	0.00	100.0	0.0	0.0	0.0	0.00	0.00	0.00	0.00
200.0	0.00	0.00	200.0	0.0	0.0	0.0	0.00	0.00	0.00	0.00
300.0	0.00	0.00	300.0	0.0	0.0	0.0	0.00	0.00	0.00	0.00
400.0	0.00	0.00	400.0	0.0	0.0	0.0	0.00	0.00	0.00	0.00
Start Build 3.00										
500.0	0.00	0.00	500.0	0.0	0.0	0.0	0.00	0.00	0.00	0.00
600.0	3.00	55.21	600.0	1.5	2.1	2.6	3.00	3.00	0.00	0.00
700.0	6.00	55.21	699.6	6.0	8.6	10.5	3.00	3.00	0.00	0.00
800.0	9.00	55.21	798.8	13.4	19.3	23.5	3.00	3.00	0.00	0.00
900.0	12.00	55.21	897.1	23.8	34.3	41.7	3.00	3.00	0.00	0.00
1,000.0	15.00	55.21	994.3	37.1	53.4	65.1	3.00	3.00	0.00	0.00
1,100.0	18.00	55.21	1,090.2	53.3	76.8	93.5	3.00	3.00	0.00	0.00
Start 6192.8 hold at 1114.6 MD										
1,114.6	18.44	55.21	1,104.0	55.9	80.5	98.0	3.00	3.00	0.00	0.00
1,200.0	18.44	55.21	1,185.1	71.3	102.7	125.0	0.00	0.00	0.00	0.00
1,300.0	18.44	55.21	1,279.9	89.4	128.7	156.7	0.00	0.00	0.00	0.00
1,400.0	18.44	55.21	1,374.8	107.4	154.7	188.3	0.00	0.00	0.00	0.00
1,500.0	18.44	55.21	1,469.7	125.5	180.6	219.9	0.00	0.00	0.00	0.00
1,600.0	18.44	55.21	1,564.5	143.5	206.6	251.5	0.00	0.00	0.00	0.00
1,700.0	18.44	55.21	1,659.4	161.6	232.6	283.1	0.00	0.00	0.00	0.00
1,800.0	18.44	55.21	1,754.3	179.6	258.6	314.8	0.00	0.00	0.00	0.00
1,900.0	18.44	55.21	1,849.1	197.6	284.5	346.4	0.00	0.00	0.00	0.00
2,000.0	18.44	55.21	1,944.0	215.7	310.5	378.0	0.00	0.00	0.00	0.00
2,100.0	18.44	55.21	2,038.9	233.7	336.5	409.6	0.00	0.00	0.00	0.00
2,200.0	18.44	55.21	2,133.7	251.8	362.4	441.3	0.00	0.00	0.00	0.00
2,300.0	18.44	55.21	2,228.6	269.8	388.4	472.9	0.00	0.00	0.00	0.00
2,400.0	18.44	55.21	2,323.5	287.9	414.4	504.5	0.00	0.00	0.00	0.00
2,500.0	18.44	55.21	2,418.3	305.9	440.4	536.1	0.00	0.00	0.00	0.00
ORANGE_MARKER										
2,563.9	18.44	55.21	2,479.0	317.4	457.0	556.3	0.00	0.00	0.00	0.00
2,600.0	18.44	55.21	2,513.2	323.9	466.3	567.7	0.00	0.00	0.00	0.00
2,700.0	18.44	55.21	2,608.1	342.0	492.3	599.4	0.00	0.00	0.00	0.00
WASATCH										
2,718.9	18.44	55.21	2,626.0	345.4	497.2	605.3	0.00	0.00	0.00	0.00
2,800.0	18.44	55.21	2,702.9	360.0	518.3	631.0	0.00	0.00	0.00	0.00
2,900.0	18.44	55.21	2,797.8	378.1	544.3	662.6	0.00	0.00	0.00	0.00
3,000.0	18.44	55.21	2,892.7	396.1	570.2	694.2	0.00	0.00	0.00	0.00
3,100.0	18.44	55.21	2,987.5	414.2	596.2	725.9	0.00	0.00	0.00	0.00
3,200.0	18.44	55.21	3,082.4	432.2	622.2	757.5	0.00	0.00	0.00	0.00
3,300.0	18.44	55.21	3,177.3	450.2	648.2	789.1	0.00	0.00	0.00	0.00
3,400.0	18.44	55.21	3,272.1	468.3	674.1	820.7	0.00	0.00	0.00	0.00
3,500.0	18.44	55.21	3,367.0	486.3	700.1	852.3	0.00	0.00	0.00	0.00
3,600.0	18.44	55.21	3,461.9	504.4	726.1	884.0	0.00	0.00	0.00	0.00
3,700.0	18.44	55.21	3,556.7	522.4	752.1	915.6	0.00	0.00	0.00	0.00
3,800.0	18.44	55.21	3,651.6	540.5	778.0	947.2	0.00	0.00	0.00	0.00
3,900.0	18.44	55.21	3,746.5	558.5	804.0	978.8	0.00	0.00	0.00	0.00
4,000.0	18.44	55.21	3,841.3	576.5	830.0	1,010.4	0.00	0.00	0.00	0.00
4,100.0	18.44	55.21	3,936.2	594.6	856.0	1,042.1	0.00	0.00	0.00	0.00
4,200.0	18.44	55.21	4,031.1	612.6	881.9	1,073.7	0.00	0.00	0.00	0.00
4,300.0	18.44	55.21	4,125.9	630.7	907.9	1,105.3	0.00	0.00	0.00	0.00
4,400.0	18.44	55.21	4,220.8	648.7	933.9	1,136.9	0.00	0.00	0.00	0.00
4,500.0	18.44	55.21	4,315.7	666.8	959.9	1,168.6	0.00	0.00	0.00	0.00

Database:	EDM 5000.1 Single User Db	Local Co-ordinate Reference:	Well RNPU B27 FED 25B-22 197 - Slot 25B-22
Company:	Caerus Oil & Gas	TVD Reference:	RKB @ 6540.0usft (30')
Project:	Rio Blanco County, CO	MD Reference:	RKB @ 6540.0usft (30')
Site:	PCU B27 197 Pad	North Reference:	True
Well:	RNPU B27 FED 25B-22 197	Survey Calculation Method:	Minimum Curvature
Wellbore:	OH		
Design:	Prelim #1		

Planned Survey

Measured Depth (usft)	Inclination (°)	Azimuth (°)	Vertical Depth (usft)	+N/-S (usft)	+E/-W (usft)	Vertical Section (usft)	Dogleg Rate (°/100usft)	Build Rate (°/100usft)	Turn Rate (°/100usft)
4,600.0	18.44	55.21	4,410.5	684.8	985.8	1,200.2	0.00	0.00	0.00
4,700.0	18.44	55.21	4,505.4	702.8	1,011.8	1,231.8	0.00	0.00	0.00
4,800.0	18.44	55.21	4,600.3	720.9	1,037.8	1,263.4	0.00	0.00	0.00
4,900.0	18.44	55.21	4,695.1	738.9	1,063.8	1,295.0	0.00	0.00	0.00
5,000.0	18.44	55.21	4,790.0	757.0	1,089.7	1,326.7	0.00	0.00	0.00
5,100.0	18.44	55.21	4,884.9	775.0	1,115.7	1,358.3	0.00	0.00	0.00
5,200.0	18.44	55.21	4,979.7	793.1	1,141.7	1,389.9	0.00	0.00	0.00
5,300.0	18.44	55.21	5,074.6	811.1	1,167.7	1,421.5	0.00	0.00	0.00
5,400.0	18.44	55.21	5,169.5	829.1	1,193.6	1,453.2	0.00	0.00	0.00
5,500.0	18.44	55.21	5,264.3	847.2	1,219.6	1,484.8	0.00	0.00	0.00
5,600.0	18.44	55.21	5,359.2	865.2	1,245.6	1,516.4	0.00	0.00	0.00
5,700.0	18.44	55.21	5,454.1	883.3	1,271.6	1,548.0	0.00	0.00	0.00
5,800.0	18.44	55.21	5,548.9	901.3	1,297.5	1,579.6	0.00	0.00	0.00
WASATCH_G_ZONE									
5,836.9	18.44	55.21	5,584.0	908.0	1,307.1	1,591.3	0.00	0.00	0.00
5,900.0	18.44	55.21	5,643.8	919.4	1,323.5	1,611.3	0.00	0.00	0.00
6,000.0	18.44	55.21	5,738.7	937.4	1,349.5	1,642.9	0.00	0.00	0.00
6,100.0	18.44	55.21	5,833.6	955.4	1,375.5	1,674.5	0.00	0.00	0.00
6,200.0	18.44	55.21	5,928.4	973.5	1,401.4	1,706.1	0.00	0.00	0.00
6,300.0	18.44	55.21	6,023.3	991.5	1,427.4	1,737.8	0.00	0.00	0.00
FORT_UNION									
6,346.1	18.44	55.21	6,067.0	999.8	1,439.4	1,752.3	0.00	0.00	0.00
6,400.0	18.44	55.21	6,118.2	1,009.6	1,453.4	1,769.4	0.00	0.00	0.00
6,500.0	18.44	55.21	6,213.0	1,027.6	1,479.4	1,801.0	0.00	0.00	0.00
6,600.0	18.44	55.21	6,307.9	1,045.7	1,505.3	1,832.6	0.00	0.00	0.00
6,700.0	18.44	55.21	6,402.8	1,063.7	1,531.3	1,864.2	0.00	0.00	0.00
6,800.0	18.44	55.21	6,497.6	1,081.7	1,557.3	1,895.9	0.00	0.00	0.00
6,900.0	18.44	55.21	6,592.5	1,099.8	1,583.3	1,927.5	0.00	0.00	0.00
7,000.0	18.44	55.21	6,687.4	1,117.8	1,609.2	1,959.1	0.00	0.00	0.00
7,100.0	18.44	55.21	6,782.2	1,135.9	1,635.2	1,990.7	0.00	0.00	0.00
7,200.0	18.44	55.21	6,877.1	1,153.9	1,661.2	2,022.4	0.00	0.00	0.00
Start Drop -3.00									
7,307.4	18.44	55.21	6,979.0	1,173.3	1,689.1	2,056.3	0.00	0.00	0.00
7,400.0	15.66	55.21	7,067.5	1,188.8	1,711.4	2,083.5	3.00	-3.00	0.00
7,500.0	12.66	55.21	7,164.4	1,202.7	1,731.5	2,107.9	3.00	-3.00	0.00
7,600.0	9.66	55.21	7,262.5	1,213.8	1,747.4	2,127.3	3.00	-3.00	0.00
7,700.0	6.66	55.21	7,361.5	1,221.9	1,759.0	2,141.5	3.00	-3.00	0.00
7,800.0	3.66	55.21	7,461.1	1,227.0	1,766.4	2,150.4	3.00	-3.00	0.00
7,900.0	0.66	55.21	7,561.0	1,229.2	1,769.5	2,154.2	3.00	-3.00	0.00
Start DLS 1.50 TFO 215.00 - OHIO_CREEK									
7,922.0	0.00	0.00	7,583.0	1,229.2	1,769.6	2,154.3	3.00	-3.00	0.00
Start 5681.0 hold at 7988.8 MD									
7,988.8	1.00	215.00	7,649.8	1,228.7	1,769.3	2,153.8	1.50	1.50	0.00
8,000.0	1.00	215.00	7,661.0	1,228.6	1,769.1	2,153.6	0.00	0.00	0.00
8,100.0	1.00	215.00	7,761.0	1,227.2	1,768.1	2,152.0	0.00	0.00	0.00
8,200.0	1.00	215.00	7,861.0	1,225.7	1,767.1	2,150.3	0.00	0.00	0.00
8,300.0	1.00	215.00	7,961.0	1,224.3	1,766.1	2,148.7	0.00	0.00	0.00
8,400.0	1.00	215.00	8,061.0	1,222.9	1,765.1	2,147.1	0.00	0.00	0.00
8,500.0	1.00	215.00	8,160.9	1,221.4	1,764.1	2,145.4	0.00	0.00	0.00
8,600.0	1.00	215.00	8,260.9	1,220.0	1,763.1	2,143.8	0.00	0.00	0.00
WILLIAMS_FORK									
8,672.1	1.00	215.00	8,333.0	1,219.0	1,762.4	2,142.6	0.00	0.00	0.00

Database:	EDM 5000.1 Single User Db	Local Co-ordinate Reference:	Well RNPU B27 FED 25B-22 197 - Slot 25B-22
Company:	Caerus Oil & Gas	TVD Reference:	RKB @ 6540.0usft (30')
Project:	Rio Blanco County, CO	MD Reference:	RKB @ 6540.0usft (30')
Site:	PCU B27 197 Pad	North Reference:	True
Well:	RNPU B27 FED 25B-22 197	Survey Calculation Method:	Minimum Curvature
Wellbore:	OH		
Design:	Prelim #1		

Planned Survey

Measured Depth (usft)	Inclination (°)	Azimuth (°)	Vertical Depth (usft)	+N/-S (usft)	+E/-W (usft)	Vertical Section (usft)	Dogleg Rate (°/100usft)	Build Rate (°/100usft)	Turn Rate (°/100usft)
8,700.0	1.00	215.00	8,360.9	1,218.6	1,762.1	2,142.2	0.00	0.00	0.00
8,800.0	1.00	215.00	8,460.9	1,217.1	1,761.1	2,140.6	0.00	0.00	0.00
8,900.0	1.00	215.00	8,560.9	1,215.7	1,760.1	2,138.9	0.00	0.00	0.00
9,000.0	1.00	215.00	8,660.9	1,214.3	1,759.1	2,137.3	0.00	0.00	0.00
9,100.0	1.00	215.00	8,760.9	1,212.8	1,758.1	2,135.7	0.00	0.00	0.00
9,200.0	1.00	215.00	8,860.8	1,211.4	1,757.1	2,134.0	0.00	0.00	0.00
9,300.0	1.00	215.00	8,960.8	1,210.0	1,756.1	2,132.4	0.00	0.00	0.00
9,400.0	1.00	215.00	9,060.8	1,208.5	1,755.1	2,130.8	0.00	0.00	0.00
9,500.0	1.00	215.00	9,160.8	1,207.1	1,754.1	2,129.1	0.00	0.00	0.00
9,600.0	1.00	215.00	9,260.8	1,205.7	1,753.1	2,127.5	0.00	0.00	0.00
9,700.0	1.00	215.00	9,360.8	1,204.2	1,752.1	2,125.9	0.00	0.00	0.00
9,800.0	1.00	215.00	9,460.7	1,202.8	1,751.1	2,124.2	0.00	0.00	0.00
9,900.0	1.00	215.00	9,560.7	1,201.4	1,750.1	2,122.6	0.00	0.00	0.00
10,000.0	1.00	215.00	9,660.7	1,199.9	1,749.1	2,121.0	0.00	0.00	0.00
10,100.0	1.00	215.00	9,760.7	1,198.5	1,748.1	2,119.3	0.00	0.00	0.00
10,200.0	1.00	215.00	9,860.7	1,197.1	1,747.1	2,117.7	0.00	0.00	0.00
10,300.0	1.00	215.00	9,960.7	1,195.6	1,746.1	2,116.1	0.00	0.00	0.00
10,400.0	1.00	215.00	10,060.7	1,194.2	1,745.1	2,114.4	0.00	0.00	0.00
10,500.0	1.00	215.00	10,160.6	1,192.8	1,744.0	2,112.8	0.00	0.00	0.00
10,600.0	1.00	215.00	10,260.6	1,191.3	1,743.0	2,111.2	0.00	0.00	0.00
10,700.0	1.00	215.00	10,360.6	1,189.9	1,742.0	2,109.5	0.00	0.00	0.00
10,800.0	1.00	215.00	10,460.6	1,188.5	1,741.0	2,107.9	0.00	0.00	0.00
10,900.0	1.00	215.00	10,560.6	1,187.0	1,740.0	2,106.3	0.00	0.00	0.00
11,000.0	1.00	215.00	10,660.6	1,185.6	1,739.0	2,104.7	0.00	0.00	0.00
11,100.0	1.00	215.00	10,760.5	1,184.2	1,738.0	2,103.0	0.00	0.00	0.00
11,200.0	1.00	215.00	10,860.5	1,182.7	1,737.0	2,101.4	0.00	0.00	0.00
11,300.0	1.00	215.00	10,960.5	1,181.3	1,736.0	2,099.8	0.00	0.00	0.00
11,400.0	1.00	215.00	11,060.5	1,179.9	1,735.0	2,098.1	0.00	0.00	0.00
11,500.0	1.00	215.00	11,160.5	1,178.4	1,734.0	2,096.5	0.00	0.00	0.00
11,600.0	1.00	215.00	11,260.5	1,177.0	1,733.0	2,094.9	0.00	0.00	0.00
CAMEO									
11,647.5	1.00	215.00	11,308.0	1,176.3	1,732.5	2,094.1	0.00	0.00	0.00
11,700.0	1.00	215.00	11,360.5	1,175.6	1,732.0	2,093.2	0.00	0.00	0.00
11,800.0	1.00	215.00	11,460.4	1,174.1	1,731.0	2,091.6	0.00	0.00	0.00
11,900.0	1.00	215.00	11,560.4	1,172.7	1,730.0	2,090.0	0.00	0.00	0.00
12,000.0	1.00	215.00	11,660.4	1,171.3	1,729.0	2,088.3	0.00	0.00	0.00
12,100.0	1.00	215.00	11,760.4	1,169.8	1,728.0	2,086.7	0.00	0.00	0.00
ROLLINS									
12,197.6	1.00	215.00	11,858.0	1,168.4	1,727.0	2,085.1	0.00	0.00	0.00
12,200.0	1.00	215.00	11,860.4	1,168.4	1,727.0	2,085.1	0.00	0.00	0.00
COZZETTE									
12,269.6	1.00	215.00	11,930.0	1,167.4	1,726.3	2,083.9	0.00	0.00	0.00
12,300.0	1.00	215.00	11,960.4	1,167.0	1,726.0	2,083.4	0.00	0.00	0.00
12,400.0	1.00	215.00	12,060.3	1,165.5	1,725.0	2,081.8	0.00	0.00	0.00
12,500.0	1.00	215.00	12,160.3	1,164.1	1,724.0	2,080.2	0.00	0.00	0.00
12,600.0	1.00	215.00	12,260.3	1,162.7	1,723.0	2,078.5	0.00	0.00	0.00
12,700.0	1.00	215.00	12,360.3	1,161.2	1,722.0	2,076.9	0.00	0.00	0.00
12,800.0	1.00	215.00	12,460.3	1,159.8	1,721.0	2,075.3	0.00	0.00	0.00
Corcoran									
12,869.7	1.00	215.00	12,530.0	1,158.8	1,720.3	2,074.1	0.00	0.00	0.00
12,900.0	1.00	215.00	12,560.3	1,158.4	1,720.0	2,073.6	0.00	0.00	0.00
13,000.0	1.00	215.00	12,660.3	1,156.9	1,719.0	2,072.0	0.00	0.00	0.00
13,100.0	1.00	215.00	12,760.2	1,155.5	1,717.9	2,070.4	0.00	0.00	0.00

Database:	EDM 5000.1 Single User Db	Local Co-ordinate Reference:	Well RNPU B27 FED 25B-22 197 - Slot 25B-22
Company:	Caerus Oil & Gas	TVD Reference:	RKB @ 6540.0usft (30')
Project:	Rio Blanco County, CO	MD Reference:	RKB @ 6540.0usft (30')
Site:	PCU B27 197 Pad	North Reference:	True
Well:	RNPU B27 FED 25B-22 197	Survey Calculation Method:	Minimum Curvature
Wellbore:	OH		
Design:	Prelim #1		

Planned Survey										
Measured Depth (usft)	Inclination (°)	Azimuth (°)	Vertical Depth (usft)	+N/-S (usft)	+E/-W (usft)	Vertical Section (usft)	Dogleg Rate (°/100usft)	Build Rate (°/100usft)	Turn Rate (°/100usft)	
13,200.0	1.00	215.00	12,860.2	1,154.1	1,716.9	2,068.8	0.00	0.00	0.00	
13,300.0	1.00	215.00	12,960.2	1,152.6	1,715.9	2,067.1	0.00	0.00	0.00	
13,400.0	1.00	215.00	13,060.2	1,151.2	1,714.9	2,065.5	0.00	0.00	0.00	
13,500.0	1.00	215.00	13,160.2	1,149.8	1,713.9	2,063.9	0.00	0.00	0.00	
13,600.0	1.00	215.00	13,260.2	1,148.3	1,712.9	2,062.2	0.00	0.00	0.00	
TD at 13669.8										
13,669.8	1.00	215.00	13,330.0	1,147.3	1,712.2	2,061.1	0.00	0.00	0.00	

Design Targets										
Target Name	Dip Angle (°)	Dip Dir. (°)	TVD (usft)	+N/-S (usft)	+E/-W (usft)	Northing (usft)	Easting (usft)	Latitude	Longitude	
25B-22 - OHCR - hit/miss target - Shape - Point	0.00	0.00	7,583.0	1,229.2	1,769.6	14,517,625.53	2,407,812.63	39.944539	-108.262270	
25B-22 - PBHL - plan hits target center - Ellipse (radii L100.0 W50.0 on 215.00 azi)	0.00	0.00	13,330.0	1,147.3	1,712.2	14,517,541.90	2,407,757.80	39.944315	-108.262474	

Formations						
Measured Depth (usft)	Vertical Depth (usft)	Name	Lithology	Dip (°)	Dip Direction (°)	
2,563.9	2,479.0	ORANGE_MARKER				
2,718.9	2,626.0	WASATCH				
5,836.9	5,584.0	WASATCH_G_ZONE				
6,346.1	6,067.0	FORT_UNION				
7,922.0	7,583.0	OHIO_CREEK				
8,672.1	8,333.0	WILLIAMS_FORK				
11,647.5	11,308.0	CAMEO				
12,197.6	11,858.0	ROLLINS				
12,269.6	11,930.0	COZZETTE				
12,869.7	12,530.0	Corcoran				

Plan Annotations					
Measured Depth (usft)	Vertical Depth (usft)	Local Coordinates		Comment	
		+N/-S (usft)	+E/-W (usft)		
500.0	500.0	0.0	0.0	Start Build 3.00	
1,114.6	1,104.0	55.9	80.5	Start 6192.8 hold at 1114.6 MD	
7,307.4	6,979.0	1,173.3	1,689.1	Start Drop -3.00	
7,922.0	7,583.0	1,229.2	1,769.6	Start DLS 1.50 TFO 215.00	
7,988.8	7,649.8	1,228.7	1,769.3	Start 5681.0 hold at 7988.8 MD	
13,669.8	13,330.0	1,147.3	1,712.2	TD at 13669.8	