

LEGEND:

- = PROPOSED WELLHEAD.
- ◇ = TOP OF GAS INTERVAL.
- = TARGET BOTTOM HOLE.
- ▲ = SECTION CORNERS LOCATED. (NAD 83)

T1S, R97W, 6th P.M.

NOTE:
Distances referenced on plat to section lines are perpendicular.

1939 Brass Cap
Lat: 39.957335°
Long: 108.277930°

1939 Brass Cap
Lat: 39.957276°
Long: 108.268052°

1939 Brass Cap
Lat: 39.957251°
Long: 108.258228°

1939 Brass Cap
Lat: 39.949998°
Long: 108.277906°

1938 Brass Cap
Lat: 39.949945°
Long: 108.258233°

1939 Brass Cap
Lat: 39.942641°
Long: 108.277890°

1939 Brass Cap
Lat: 39.942634°
Long: 108.268088°

1938 Brass Cap
Lat: 39.942624°
Long: 108.258292°

1939 Brass Cap
Lat: 39.935312°
Long: 108.277825°

1938 Brass Cap
Lat: 39.935367°
Long: 108.258218°

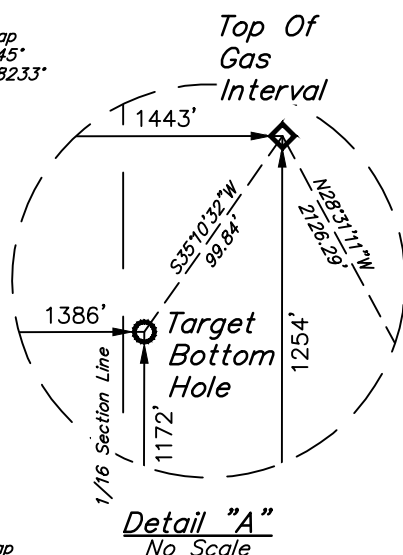
1939 Brass Cap
Lat: 39.927978°
Long: 108.277756°

1939 Brass Cap
Lat: 39.928034°
Long: 108.267951°

1938 Brass Cap
Lat: 39.928059°
Long: 108.258141°

BASIS OF BEARINGS

RNPU B27 FED 14D-22 197
Elev. Ungraded Ground = 6524.5'



PDOP = 1.5



NAD 83 (SURFACE LOCATION)	NAD 83 (TOP OF GAS INTERVAL)	NAD 83 (TARGET BOTTOM HOLE)
LATITUDE = 39°56'27.43" (39.940953°)	LATITUDE = 39°56'45.88" (39.946079°)	LATITUDE = 39°56'45.08" (39.945855°)
LONGITUDE = 108°16'08.87" (108.269131°)	LONGITUDE = 108°16'21.91" (108.272752°)	LONGITUDE = 108°16'22.65" (108.272957°)
NAD 27 (SURFACE LOCATION)	NAD 27 (TOP OF GAS INTERVAL)	NAD 27 (TARGET BOTTOM HOLE)
LATITUDE = 39°56'27.53" (39.940981°)	LATITUDE = 39°56'45.99" (39.946107°)	LATITUDE = 39°56'45.18" (39.945883°)
LONGITUDE = 108°16'06.56" (108.268489°)	LONGITUDE = 108°16'19.60" (108.272110°)	LONGITUDE = 108°16'20.33" (108.272315°)
UTM, NAD 27 (ZONE 12)	UTM, NAD 27 (ZONE 12)	UTM, NAD 27 (ZONE 12)
N: 14516276.00' E: 2406108.69'	N: 14518111.95' E: 2405036.43'	N: 14518028.61' E: 2404981.46'

CERTIFICATE
THIS IS TO CERTIFY THAT THE ABOVE PLAT WAS PREPARED AND THE LOCATION AS SHOWN WAS STAKED ON THE GROUND FROM FIELD NOTES OF ACTUAL SURVEYS MADE BY ME OR UNDER MY SUPERVISION AND THAT THE SAME ARE TRUE AND CORRECT TO THE BEST OF MY KNOWLEDGE AND BELIEF.

Handwritten Signature
REGISTERED LAND SURVEYOR
REGISTRATION NO. 109180
STATE OF COLORADO 11-22-22

REV: 1 11-22-22 T.L.L. (COMPANY NAME CHANGE)

BASIS OF BEARINGS
BEARINGS ARE BASED ASSUMPTION THAT THE WEST LINE OF THE NORTHWEST 1/4 OF SECTION 27 BEARS N00°22'43"W. MONUMENTS DESCRIBED HEREON.

BASIS OF ELEVATION
BENCH MARK (MR 25) LOCATED IN THE NE 1/4 OF SECTION 25, T2S, R99W, 6th P.M., TAKEN FROM THE YANKEE GULCH QUADRANGLE, COLORADO, RIO BLANCO, 7.5 MINUTE SERIES (TOPOGRAPHIC MAP) PUBLISHED BY THE UNITED STATES DEPARTMENT OF THE INTERIOR, GEOLOGICAL SURVEY. SAID ELEVATION IS MARKED AS BEING 6971 FEET.

UELS, LLC
Corporate Office * 85 South 200 East
Vernal, UT 84078 * (435) 789-1017



Caerus Piceance LLC
RNPU B27 FED 14D-22 197
LOT 3, SECTION 27, T1S, R97W, 6th P.M.
RIO BLANCO COUNTY, COLORADO

SURVEYED BY	BART HUNTING, J.L.	09-12-22	SCALE
DRAWN BY	T.L.L.	11-08-22	1" = 1000'

WELL LOCATION PLAT