

Project: Rio Blanco County, CO
 Site: PCU B27 197 Pad
 Well: PCU B27 FED 12B-27 197
 Wellbore: OH
 Design: Prelim #1
 Latitude: 39.940795
 Longitude: -108.268399
 Ground Level: 6510.0
 RKB @ 6540.0usft (30')

FORMATION TOP DETAILS

TVDPath	MDPath	Formation
2457.0	2488.5	ORANGE_MARKER
2611.0	2645.4	WASATCH
5452.0	5538.6	WASATCH_G_ZONE
5924.0	6019.3	FORT_UNION
7398.0	7515.9	OHIO_CREEK
8148.0	8266.0	WILLIAMS_FORK
10991.0	11109.5	CAMEO
11541.0	11659.6	ROLLINS
11658.0	11776.6	COZZETTE
12258.0	12376.7	Corcoran

REFERENCE INFORMATION

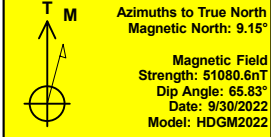
Co-ordinate (N/E) Reference: Well PCU B27 FED 12B-27 197 - Slot 12B-27, True North
 Vertical (TVD) Reference: RKB @ 6540.0usft (30')
 Section (VS) Reference: Slot - 12B-27(0.0N, 0.0E)
 Measured Depth Reference: RKB @ 6540.0usft (30')
 Calculation Method: Minimum Curvature

WELL DETAILS: PCU B27 FED 12B-27 197

+N/-S	+E/-W	Northing	Easting	Latitude	Longitude
0.0	0.0	14516209.30	2406135.90	39.940795	-108.268399

PROJECT DETAILS: Rio Blanco County, CO

Geodetic System: Universal Transverse Mercator (US Survey Feet)
 Datum: NAD 1927 - Western US
 Ellipsoid: Clarke 1866
 Zone: Zone 12N (114 W to 108 W)
 System Datum: Mean Sea Level

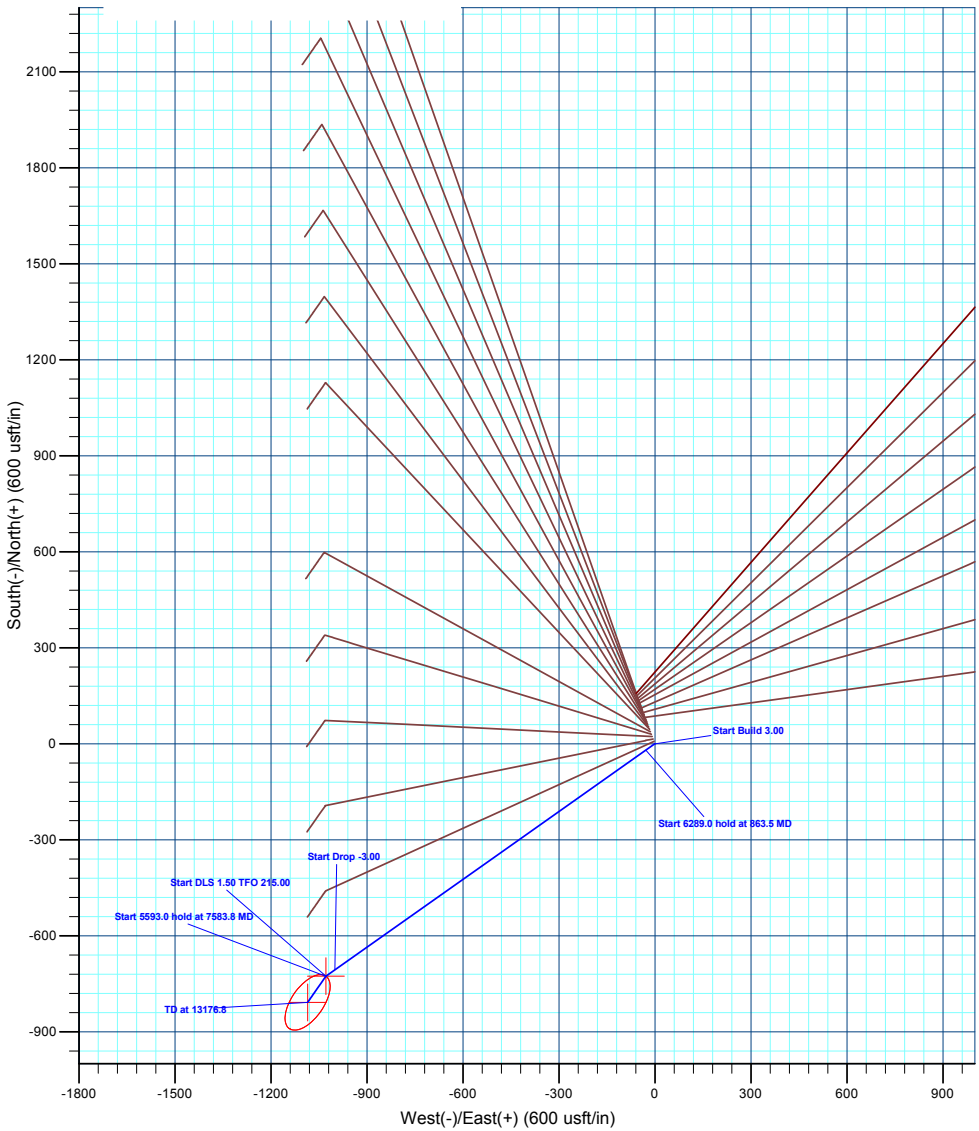
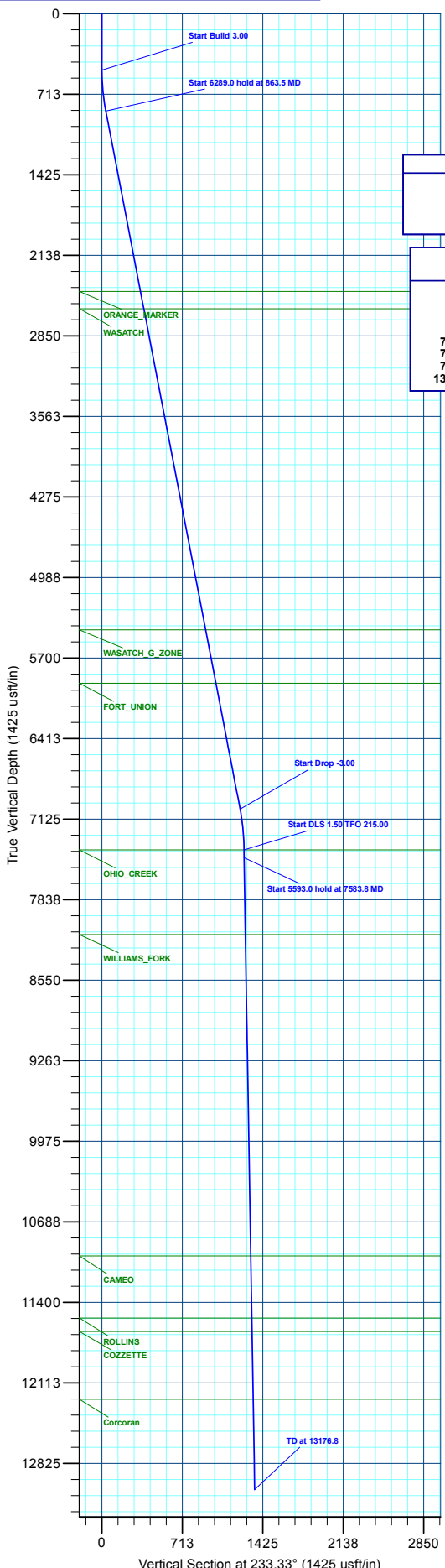


DESIGN TARGET DETAILS

Name	TVD	+N/-S	+E/-W	Northing	Easting	Latitude	Longitude
12B-27 - OHCR	7398.0	-726.1	-1028.0	14515452.03	2405130.63	39.938803	-108.272064
12B-27 - PBHL	13058.0	-808.0	-1085.3	14515368.40	2405075.80	39.938578	-108.272269

SECTION DETAILS

MD	Inc	Azi	TVD	+N/-S	+E/-W	Dleg	TFace	Vsect	Annotation
0.0	0.00	0.00	0.0	0.0	0.0	0.00	0.00	0.0	
500.0	0.00	0.00	500.0	0.0	0.0	0.00	0.00	0.0	Start Build 3.00
863.5	10.90	234.76	861.3	-19.9	-28.2	3.00	234.76	34.5	Start 6289.0 hold at 863.5 MD
7152.5	10.90	234.76	7036.7	-706.2	-999.8	0.00	0.00	1223.7	Start Drop -3.00
7515.9	0.00	0.00	7398.0	-726.1	-1028.0	3.00	180.00	1258.2	Start DLS 1.50 TFO 215.00
7583.8	1.02	215.00	7465.9	-726.6	-1028.3	1.50	215.00	1258.8	Start 5593.0 hold at 7583.8 MD
13176.8	1.02	215.00	13058.0	-808.0	-1085.3	0.00	0.00	1353.1	TD at 13176.8



Plan: Prelim #1 (PCU B27 FED 12B-27 197/OH)
 Created By: Will Jircik Date: 1:02, November 02 2022



Caerus Oil & Gas

Rio Blanco County, CO

PCU B27 197 Pad

PCU B27 FED 12B-27 197 - Slot 12B-27

OH

Plan: Prelim #1

KLX Well Planning Report

02 November, 2022



Database:	EDM 5000.1 Single User Db	Local Co-ordinate Reference:	Well PCU B27 FED 12B-27 197 - Slot 12B-27
Company:	Caerus Oil & Gas	TVD Reference:	RKB @ 6540.0usft (30')
Project:	Rio Blanco County, CO	MD Reference:	RKB @ 6540.0usft (30')
Site:	PCU B27 197 Pad	North Reference:	True
Well:	PCU B27 FED 12B-27 197	Survey Calculation Method:	Minimum Curvature
Wellbore:	OH		
Design:	Prelim #1		

Project	Rio Blanco County, CO		
Map System:	Universal Transverse Mercator (US Survey Fee	System Datum:	Mean Sea Level
Geo Datum:	NAD 1927 - Western US		
Map Zone:	Zone 12N (114 W to 108 W)		

Site	PCU B27 197 Pad				
Site Position:		Northing:	14,516,246.40 usft	Latitude:	39.940899
From:	Map	Easting:	2,406,120.80 usft	Longitude:	-108.268449
Position Uncertainty:	0.0 usft	Slot Radius:	13-3/16 "	Grid Convergence:	1.75 °

Well	PCU B27 FED 12B-27 197 - Slot 12B-27					
Well Position	+N/-S	-37.5 usft	Northing:	14,516,209.30 usft	Latitude:	39.940796
	+E/-W	14.0 usft	Easting:	2,406,135.90 usft	Longitude:	-108.268400
Position Uncertainty		0.0 usft	Wellhead Elevation:		Ground Level:	6,510.0 usft

Wellbore	OH				
-----------------	----	--	--	--	--

Magnetics	Model Name	Sample Date	Declination (°)	Dip Angle (°)	Field Strength (nT)
	HDGM2022	9/30/2022	9.15	65.83	51,080.60000000

Design	Prelim #1				
---------------	-----------	--	--	--	--

Audit Notes:					
Version:	Phase:	PLAN	Tie On Depth:	0.0	
Vertical Section:	Depth From (TVD) (usft)	+N/-S (usft)	+E/-W (usft)	Direction (°)	
	0.0	0.0	0.0	233.33	

Plan Sections										
Measured Depth (usft)	Inclination (°)	Azimuth (°)	Vertical Depth (usft)	+N/-S (usft)	+E/-W (usft)	Dogleg Rate (°/100usft)	Build Rate (°/100usft)	Turn Rate (°/100usft)	TFO (°)	Target
0.0	0.00	0.00	0.0	0.0	0.0	0.00	0.00	0.00	0.00	
500.0	0.00	0.00	500.0	0.0	0.0	0.00	0.00	0.00	0.00	
863.5	10.90	234.76	861.3	-19.9	-28.2	3.00	3.00	0.00	234.76	
7,152.5	10.90	234.76	7,036.7	-706.2	-999.8	0.00	0.00	0.00	0.00	
7,515.9	0.00	0.00	7,398.0	-726.1	-1,028.0	3.00	-3.00	0.00	180.00	12B-27 - OHCR
7,583.8	1.02	215.00	7,465.9	-726.6	-1,028.3	1.50	1.50	-213.58	215.00	
13,176.8	1.02	215.00	13,058.0	-808.0	-1,085.3	0.00	0.00	0.00	0.00	12B-27 - PBHL

Database:	EDM 5000.1 Single User Db	Local Co-ordinate Reference:	Well PCU B27 FED 12B-27 197 - Slot 12B-27
Company:	Caerus Oil & Gas	TVD Reference:	RKB @ 6540.0usft (30')
Project:	Rio Blanco County, CO	MD Reference:	RKB @ 6540.0usft (30')
Site:	PCU B27 197 Pad	North Reference:	True
Well:	PCU B27 FED 12B-27 197	Survey Calculation Method:	Minimum Curvature
Wellbore:	OH		
Design:	Prelim #1		

Planned Survey

Measured Depth (usft)	Inclination (°)	Azimuth (°)	Vertical Depth (usft)	+N/-S (usft)	+E/-W (usft)	Vertical Section (usft)	Dogleg Rate (°/100usft)	Build Rate (°/100usft)	Turn Rate (°/100usft)
0.0	0.00	0.00	0.0	0.0	0.0	0.0	0.00	0.00	0.00
100.0	0.00	0.00	100.0	0.0	0.0	0.0	0.00	0.00	0.00
200.0	0.00	0.00	200.0	0.0	0.0	0.0	0.00	0.00	0.00
300.0	0.00	0.00	300.0	0.0	0.0	0.0	0.00	0.00	0.00
400.0	0.00	0.00	400.0	0.0	0.0	0.0	0.00	0.00	0.00
Start Build 3.00									
500.0	0.00	0.00	500.0	0.0	0.0	0.0	0.00	0.00	0.00
600.0	3.00	234.76	600.0	-1.5	-2.1	2.6	3.00	3.00	0.00
700.0	6.00	234.76	699.6	-6.0	-8.5	10.5	3.00	3.00	0.00
800.0	9.00	234.76	798.8	-13.6	-19.2	23.5	3.00	3.00	0.00
Start 6289.0 hold at 863.5 MD									
863.5	10.90	234.76	861.3	-19.9	-28.2	34.5	3.00	3.00	0.00
900.0	10.90	234.76	897.2	-23.9	-33.8	41.4	0.00	0.00	0.00
1,000.0	10.90	234.76	995.3	-34.8	-49.3	60.3	0.00	0.00	0.00
1,100.0	10.90	234.76	1,093.5	-45.7	-64.7	79.2	0.00	0.00	0.00
1,200.0	10.90	234.76	1,191.7	-56.6	-80.2	98.1	0.00	0.00	0.00
1,300.0	10.90	234.76	1,289.9	-67.5	-95.6	117.0	0.00	0.00	0.00
1,400.0	10.90	234.76	1,388.1	-78.4	-111.1	135.9	0.00	0.00	0.00
1,500.0	10.90	234.76	1,486.3	-89.4	-126.5	154.8	0.00	0.00	0.00
1,600.0	10.90	234.76	1,584.5	-100.3	-142.0	173.7	0.00	0.00	0.00
1,700.0	10.90	234.76	1,682.7	-111.2	-157.4	192.7	0.00	0.00	0.00
1,800.0	10.90	234.76	1,780.9	-122.1	-172.9	211.6	0.00	0.00	0.00
1,900.0	10.90	234.76	1,879.1	-133.0	-188.3	230.5	0.00	0.00	0.00
2,000.0	10.90	234.76	1,977.3	-143.9	-203.8	249.4	0.00	0.00	0.00
2,100.0	10.90	234.76	2,075.5	-154.8	-219.2	268.3	0.00	0.00	0.00
2,200.0	10.90	234.76	2,173.7	-165.8	-234.7	287.2	0.00	0.00	0.00
2,300.0	10.90	234.76	2,271.9	-176.7	-250.1	306.1	0.00	0.00	0.00
2,400.0	10.90	234.76	2,370.1	-187.6	-265.6	325.0	0.00	0.00	0.00
ORANGE_MARKER									
2,488.5	10.90	234.76	2,457.0	-197.2	-279.2	341.8	0.00	0.00	0.00
2,500.0	10.90	234.76	2,468.3	-198.5	-281.0	343.9	0.00	0.00	0.00
2,600.0	10.90	234.76	2,566.5	-209.4	-296.5	362.8	0.00	0.00	0.00
WASATCH									
2,645.4	10.90	234.76	2,611.0	-214.4	-303.5	371.4	0.00	0.00	0.00
2,700.0	10.90	234.76	2,664.7	-220.3	-311.9	381.8	0.00	0.00	0.00
2,800.0	10.90	234.76	2,762.8	-231.2	-327.4	400.7	0.00	0.00	0.00
2,900.0	10.90	234.76	2,861.0	-242.2	-342.8	419.6	0.00	0.00	0.00
3,000.0	10.90	234.76	2,959.2	-253.1	-358.3	438.5	0.00	0.00	0.00
3,100.0	10.90	234.76	3,057.4	-264.0	-373.7	457.4	0.00	0.00	0.00
3,200.0	10.90	234.76	3,155.6	-274.9	-389.2	476.3	0.00	0.00	0.00
3,300.0	10.90	234.76	3,253.8	-285.8	-404.6	495.2	0.00	0.00	0.00
3,400.0	10.90	234.76	3,352.0	-296.7	-420.1	514.1	0.00	0.00	0.00
3,500.0	10.90	234.76	3,450.2	-307.6	-435.5	533.0	0.00	0.00	0.00
3,600.0	10.90	234.76	3,548.4	-318.5	-451.0	551.9	0.00	0.00	0.00
3,700.0	10.90	234.76	3,646.6	-329.5	-466.4	570.9	0.00	0.00	0.00
3,800.0	10.90	234.76	3,744.8	-340.4	-481.9	589.8	0.00	0.00	0.00
3,900.0	10.90	234.76	3,843.0	-351.3	-497.3	608.7	0.00	0.00	0.00
4,000.0	10.90	234.76	3,941.2	-362.2	-512.8	627.6	0.00	0.00	0.00
4,100.0	10.90	234.76	4,039.4	-373.1	-528.2	646.5	0.00	0.00	0.00
4,200.0	10.90	234.76	4,137.6	-384.0	-543.7	665.4	0.00	0.00	0.00
4,300.0	10.90	234.76	4,235.8	-394.9	-559.1	684.3	0.00	0.00	0.00
4,400.0	10.90	234.76	4,334.0	-405.9	-574.6	703.2	0.00	0.00	0.00
4,500.0	10.90	234.76	4,432.2	-416.8	-590.0	722.1	0.00	0.00	0.00
4,600.0	10.90	234.76	4,530.4	-427.7	-605.5	741.0	0.00	0.00	0.00

Database:	EDM 5000.1 Single User Db	Local Co-ordinate Reference:	Well PCU B27 FED 12B-27 197 - Slot 12B-27
Company:	Caerus Oil & Gas	TVD Reference:	RKB @ 6540.0usft (30')
Project:	Rio Blanco County, CO	MD Reference:	RKB @ 6540.0usft (30')
Site:	PCU B27 197 Pad	North Reference:	True
Well:	PCU B27 FED 12B-27 197	Survey Calculation Method:	Minimum Curvature
Wellbore:	OH		
Design:	Prelim #1		

Planned Survey

Measured Depth (usft)	Inclination (°)	Azimuth (°)	Vertical Depth (usft)	+N/-S (usft)	+E/-W (usft)	Vertical Section (usft)	Dogleg Rate (°/100usft)	Build Rate (°/100usft)	Turn Rate (°/100usft)
4,700.0	10.90	234.76	4,628.5	-438.6	-620.9	760.0	0.00	0.00	0.00
4,800.0	10.90	234.76	4,726.7	-449.5	-636.4	778.9	0.00	0.00	0.00
4,900.0	10.90	234.76	4,824.9	-460.4	-651.8	797.8	0.00	0.00	0.00
5,000.0	10.90	234.76	4,923.1	-471.3	-667.3	816.7	0.00	0.00	0.00
5,100.0	10.90	234.76	5,021.3	-482.2	-682.7	835.6	0.00	0.00	0.00
5,200.0	10.90	234.76	5,119.5	-493.2	-698.2	854.5	0.00	0.00	0.00
5,300.0	10.90	234.76	5,217.7	-504.1	-713.6	873.4	0.00	0.00	0.00
5,400.0	10.90	234.76	5,315.9	-515.0	-729.1	892.3	0.00	0.00	0.00
5,500.0	10.90	234.76	5,414.1	-525.9	-744.5	911.2	0.00	0.00	0.00
WASATCH_G_ZONE									
5,538.6	10.90	234.76	5,452.0	-530.1	-750.5	918.5	0.00	0.00	0.00
5,600.0	10.90	234.76	5,512.3	-536.8	-760.0	930.1	0.00	0.00	0.00
5,700.0	10.90	234.76	5,610.5	-547.7	-775.4	949.1	0.00	0.00	0.00
5,800.0	10.90	234.76	5,708.7	-558.6	-790.9	968.0	0.00	0.00	0.00
5,900.0	10.90	234.76	5,806.9	-569.6	-806.3	986.9	0.00	0.00	0.00
6,000.0	10.90	234.76	5,905.1	-580.5	-821.8	1,005.8	0.00	0.00	0.00
FORT_UNION									
6,019.3	10.90	234.76	5,924.0	-582.6	-824.7	1,009.4	0.00	0.00	0.00
6,100.0	10.90	234.76	6,003.3	-591.4	-837.2	1,024.7	0.00	0.00	0.00
6,200.0	10.90	234.76	6,101.5	-602.3	-852.7	1,043.6	0.00	0.00	0.00
6,300.0	10.90	234.76	6,199.7	-613.2	-868.1	1,062.5	0.00	0.00	0.00
6,400.0	10.90	234.76	6,297.9	-624.1	-883.6	1,081.4	0.00	0.00	0.00
6,500.0	10.90	234.76	6,396.1	-635.0	-899.0	1,100.3	0.00	0.00	0.00
6,600.0	10.90	234.76	6,494.2	-645.9	-914.5	1,119.2	0.00	0.00	0.00
6,700.0	10.90	234.76	6,592.4	-656.9	-929.9	1,138.2	0.00	0.00	0.00
6,800.0	10.90	234.76	6,690.6	-667.8	-945.4	1,157.1	0.00	0.00	0.00
6,900.0	10.90	234.76	6,788.8	-678.7	-960.8	1,176.0	0.00	0.00	0.00
7,000.0	10.90	234.76	6,887.0	-689.6	-976.3	1,194.9	0.00	0.00	0.00
7,100.0	10.90	234.76	6,985.2	-700.5	-991.7	1,213.8	0.00	0.00	0.00
Start Drop -3.00									
7,152.5	10.90	234.76	7,036.7	-706.2	-999.8	1,223.7	0.00	0.00	0.00
7,200.0	9.48	234.76	7,083.5	-711.1	-1,006.7	1,232.1	3.00	-3.00	0.00
7,300.0	6.48	234.76	7,182.5	-719.1	-1,018.0	1,246.0	3.00	-3.00	0.00
7,400.0	3.48	234.76	7,282.2	-724.1	-1,025.1	1,254.7	3.00	-3.00	0.00
7,500.0	0.48	234.76	7,382.1	-726.1	-1,027.9	1,258.1	3.00	-3.00	0.00
Start DLS 1.50 TFO 215.00 - OHIO_CREEK									
7,515.9	0.00	0.00	7,398.0	-726.1	-1,028.0	1,258.2	3.00	-3.00	0.00
Start 5593.0 hold at 7583.8 MD									
7,583.8	1.02	215.00	7,465.9	-726.6	-1,028.3	1,258.8	1.50	1.50	0.00
7,600.0	1.02	215.00	7,482.1	-726.9	-1,028.5	1,259.0	0.00	0.00	0.00
7,700.0	1.02	215.00	7,582.1	-728.3	-1,029.5	1,260.7	0.00	0.00	0.00
7,800.0	1.02	215.00	7,682.0	-729.8	-1,030.5	1,262.4	0.00	0.00	0.00
7,900.0	1.02	215.00	7,782.0	-731.2	-1,031.6	1,264.1	0.00	0.00	0.00
8,000.0	1.02	215.00	7,882.0	-732.7	-1,032.6	1,265.8	0.00	0.00	0.00
8,100.0	1.02	215.00	7,982.0	-734.1	-1,033.6	1,267.5	0.00	0.00	0.00
8,200.0	1.02	215.00	8,082.0	-735.6	-1,034.6	1,269.2	0.00	0.00	0.00
WILLIAMS_FORK									
8,266.0	1.02	215.00	8,148.0	-736.6	-1,035.3	1,270.3	0.00	0.00	0.00
8,300.0	1.02	215.00	8,182.0	-737.1	-1,035.6	1,270.8	0.00	0.00	0.00
8,400.0	1.02	215.00	8,281.9	-738.5	-1,036.7	1,272.5	0.00	0.00	0.00
8,500.0	1.02	215.00	8,381.9	-740.0	-1,037.7	1,274.2	0.00	0.00	0.00
8,600.0	1.02	215.00	8,481.9	-741.4	-1,038.7	1,275.9	0.00	0.00	0.00
8,700.0	1.02	215.00	8,581.9	-742.9	-1,039.7	1,277.6	0.00	0.00	0.00

Database:	EDM 5000.1 Single User Db	Local Co-ordinate Reference:	Well PCU B27 FED 12B-27 197 - Slot 12B-27
Company:	Caerus Oil & Gas	TVD Reference:	RKB @ 6540.0usft (30')
Project:	Rio Blanco County, CO	MD Reference:	RKB @ 6540.0usft (30')
Site:	PCU B27 197 Pad	North Reference:	True
Well:	PCU B27 FED 12B-27 197	Survey Calculation Method:	Minimum Curvature
Wellbore:	OH		
Design:	Prelim #1		

Planned Survey										
Measured Depth (usft)	Inclination (°)	Azimuth (°)	Vertical Depth (usft)	+N/-S (usft)	+E/-W (usft)	Vertical Section (usft)	Dogleg Rate (°/100usft)	Build Rate (°/100usft)	Turn Rate (°/100usft)	
8,800.0	1.02	215.00	8,681.9	-744.3	-1,040.7	1,279.3	0.00	0.00	0.00	
8,900.0	1.02	215.00	8,781.9	-745.8	-1,041.7	1,281.0	0.00	0.00	0.00	
9,000.0	1.02	215.00	8,881.9	-747.2	-1,042.8	1,282.7	0.00	0.00	0.00	
9,100.0	1.02	215.00	8,981.8	-748.7	-1,043.8	1,284.3	0.00	0.00	0.00	
9,200.0	1.02	215.00	9,081.8	-750.2	-1,044.8	1,286.0	0.00	0.00	0.00	
9,300.0	1.02	215.00	9,181.8	-751.6	-1,045.8	1,287.7	0.00	0.00	0.00	
9,400.0	1.02	215.00	9,281.8	-753.1	-1,046.8	1,289.4	0.00	0.00	0.00	
9,500.0	1.02	215.00	9,381.8	-754.5	-1,047.9	1,291.1	0.00	0.00	0.00	
9,600.0	1.02	215.00	9,481.8	-756.0	-1,048.9	1,292.8	0.00	0.00	0.00	
9,700.0	1.02	215.00	9,581.7	-757.4	-1,049.9	1,294.5	0.00	0.00	0.00	
9,800.0	1.02	215.00	9,681.7	-758.9	-1,050.9	1,296.1	0.00	0.00	0.00	
9,900.0	1.02	215.00	9,781.7	-760.3	-1,051.9	1,297.8	0.00	0.00	0.00	
10,000.0	1.02	215.00	9,881.7	-761.8	-1,053.0	1,299.5	0.00	0.00	0.00	
10,100.0	1.02	215.00	9,981.7	-763.3	-1,054.0	1,301.2	0.00	0.00	0.00	
10,200.0	1.02	215.00	10,081.7	-764.7	-1,055.0	1,302.9	0.00	0.00	0.00	
10,300.0	1.02	215.00	10,181.6	-766.2	-1,056.0	1,304.6	0.00	0.00	0.00	
10,400.0	1.02	215.00	10,281.6	-767.6	-1,057.0	1,306.3	0.00	0.00	0.00	
10,500.0	1.02	215.00	10,381.6	-769.1	-1,058.1	1,308.0	0.00	0.00	0.00	
10,600.0	1.02	215.00	10,481.6	-770.5	-1,059.1	1,309.6	0.00	0.00	0.00	
10,700.0	1.02	215.00	10,581.6	-772.0	-1,060.1	1,311.3	0.00	0.00	0.00	
10,800.0	1.02	215.00	10,681.6	-773.4	-1,061.1	1,313.0	0.00	0.00	0.00	
10,900.0	1.02	215.00	10,781.6	-774.9	-1,062.1	1,314.7	0.00	0.00	0.00	
11,000.0	1.02	215.00	10,881.5	-776.4	-1,063.2	1,316.4	0.00	0.00	0.00	
11,100.0	1.02	215.00	10,981.5	-777.8	-1,064.2	1,318.1	0.00	0.00	0.00	
CAMEO										
11,109.5	1.02	215.00	10,991.0	-778.0	-1,064.3	1,318.2	0.00	0.00	0.00	
11,200.0	1.02	215.00	11,081.5	-779.3	-1,065.2	1,319.8	0.00	0.00	0.00	
11,300.0	1.02	215.00	11,181.5	-780.7	-1,066.2	1,321.5	0.00	0.00	0.00	
11,400.0	1.02	215.00	11,281.5	-782.2	-1,067.2	1,323.1	0.00	0.00	0.00	
11,500.0	1.02	215.00	11,381.5	-783.6	-1,068.3	1,324.8	0.00	0.00	0.00	
11,600.0	1.02	215.00	11,481.4	-785.1	-1,069.3	1,326.5	0.00	0.00	0.00	
ROLLINS										
11,659.6	1.02	215.00	11,541.0	-786.0	-1,069.9	1,327.5	0.00	0.00	0.00	
11,700.0	1.02	215.00	11,581.4	-786.5	-1,070.3	1,328.2	0.00	0.00	0.00	
COZZETTE										
11,776.6	1.02	215.00	11,658.0	-787.7	-1,071.1	1,329.5	0.00	0.00	0.00	
11,800.0	1.02	215.00	11,681.4	-788.0	-1,071.3	1,329.9	0.00	0.00	0.00	
11,900.0	1.02	215.00	11,781.4	-789.5	-1,072.3	1,331.6	0.00	0.00	0.00	
12,000.0	1.02	215.00	11,881.4	-790.9	-1,073.4	1,333.3	0.00	0.00	0.00	
12,100.0	1.02	215.00	11,981.4	-792.4	-1,074.4	1,335.0	0.00	0.00	0.00	
12,200.0	1.02	215.00	12,081.3	-793.8	-1,075.4	1,336.6	0.00	0.00	0.00	
12,300.0	1.02	215.00	12,181.3	-795.3	-1,076.4	1,338.3	0.00	0.00	0.00	
Corcoran										
12,376.7	1.02	215.00	12,258.0	-796.4	-1,077.2	1,339.6	0.00	0.00	0.00	
12,400.0	1.02	215.00	12,281.3	-796.7	-1,077.4	1,340.0	0.00	0.00	0.00	
12,500.0	1.02	215.00	12,381.3	-798.2	-1,078.5	1,341.7	0.00	0.00	0.00	
12,600.0	1.02	215.00	12,481.3	-799.7	-1,079.5	1,343.4	0.00	0.00	0.00	
12,700.0	1.02	215.00	12,581.3	-801.1	-1,080.5	1,345.1	0.00	0.00	0.00	
12,800.0	1.02	215.00	12,681.3	-802.6	-1,081.5	1,346.8	0.00	0.00	0.00	
12,900.0	1.02	215.00	12,781.2	-804.0	-1,082.5	1,348.4	0.00	0.00	0.00	
13,000.0	1.02	215.00	12,881.2	-805.5	-1,083.5	1,350.1	0.00	0.00	0.00	
13,100.0	1.02	215.00	12,981.2	-806.9	-1,084.6	1,351.8	0.00	0.00	0.00	
TD at 13176.8										

Database:	EDM 5000.1 Single User Db	Local Co-ordinate Reference:	Well PCU B27 FED 12B-27 197 - Slot 12B-27
Company:	Caerus Oil & Gas	TVD Reference:	RKB @ 6540.0usft (30')
Project:	Rio Blanco County, CO	MD Reference:	RKB @ 6540.0usft (30')
Site:	PCU B27 197 Pad	North Reference:	True
Well:	PCU B27 FED 12B-27 197	Survey Calculation Method:	Minimum Curvature
Wellbore:	OH		
Design:	Prelim #1		

Planned Survey									
Measured Depth (usft)	Inclination (°)	Azimuth (°)	Vertical Depth (usft)	+N/-S (usft)	+E/-W (usft)	Vertical Section (usft)	Dogleg Rate (°/100usft)	Build Rate (°/100usft)	Turn Rate (°/100usft)
13,176.8	1.02	215.00	13,058.0	-808.0	-1,085.3	1,353.1	0.00	0.00	0.00

Design Targets									
Target Name	Dip Angle (°)	Dip Dir. (°)	TVD (usft)	+N/-S (usft)	+E/-W (usft)	Northing (usft)	Easting (usft)	Latitude	Longitude
12B-27 - OHCR - hit/miss target - Shape - Point	0.00	0.00	7,398.0	-726.1	-1,028.0	14,515,452.03	2,405,130.63	39.938803	-108.272065
12B-27 - PBHL - plan hits target center - Ellipse (radii L100.0 W50.0 on 215.00 azi)	0.00	0.00	13,058.0	-808.0	-1,085.3	14,515,368.40	2,405,075.80	39.938578	-108.272269

Formations						
Measured Depth (usft)	Vertical Depth (usft)	Name	Lithology	Dip (°)	Dip Direction (°)	
2,488.5	2,457.0	ORANGE_MARKER				
2,645.4	2,611.0	WASATCH				
5,538.6	5,452.0	WASATCH_G_ZONE				
6,019.3	5,924.0	FORT_UNION				
7,515.9	7,398.0	OHIO_CREEK				
8,266.0	8,148.0	WILLIAMS_FORK				
11,109.5	10,991.0	CAMEO				
11,659.6	11,541.0	ROLLINS				
11,776.6	11,658.0	COZZETTE				
12,376.7	12,258.0	Corcoran				

Plan Annotations				
Measured Depth (usft)	Vertical Depth (usft)	+N/-S (usft)	+E/-W (usft)	Comment
500.0	500.0	0.0	0.0	Start Build 3.00
863.5	861.3	-19.9	-28.2	Start 6289.0 hold at 863.5 MD
7,152.5	7,036.7	-706.2	-999.8	Start Drop -3.00
7,515.9	7,398.0	-726.1	-1,028.0	Start DLS 1.50 TFO 215.00
7,583.8	7,465.9	-726.6	-1,028.3	Start 5593.0 hold at 7583.8 MD
13,176.8	13,058.0	-808.0	-1,085.3	TD at 13176.8