

Project: Rio Blanco County, CO
 Site: PCU B27 197 Pad
 Well: PCU B27 FED 11B-27 197
 Wellbore: OH
 Design: Prelim #1
 Latitude: 39.940878
 Longitude: -108.268439
 Ground Level: 6510.0
 WELL @ 6540.0usft (30')

FORMATION TOP DETAILS			
TVDPath	MDPath	Formation	
2481.0	2503.7	ORANGE_MARKER	
2627.0	2651.6	WASATCH	
5496.0	5557.2	WASATCH_G_ZONE	
5969.0	6036.3	FORT_UNION	
7455.0	7538.7	OHIO_CREEK	
8205.0	8288.8	WILLIAMS_FORK	
11068.0	11152.2	CAMEO	
11618.0	11702.3	ROLLINS	
11725.0	11809.3	COZZETTE	
12325.0	12409.4	Corcoran	

REFERENCE INFORMATION	
Co-ordinate (N/E)	Reference: Well PCU B27 FED 11B-27 197 - Slot 11B-27, True North
Vertical (TVD)	Reference: WELL @ 6540.0usft (30')
Section (VS)	Reference: Slot - 11B-27(0.0N, 0.0E)
Measured Depth	Reference: WELL @ 6540.0usft (30')
	Calculation Method: Minimum Curvature

WELL DETAILS: PCU B27 FED 11B-27 197					
+N/-S	+E/-W	Northing	Easting	Latitude	Longitude
0.0	0.0	14516239.00	2406123.80	39.940878	-108.268439
			6510.0		11B-27

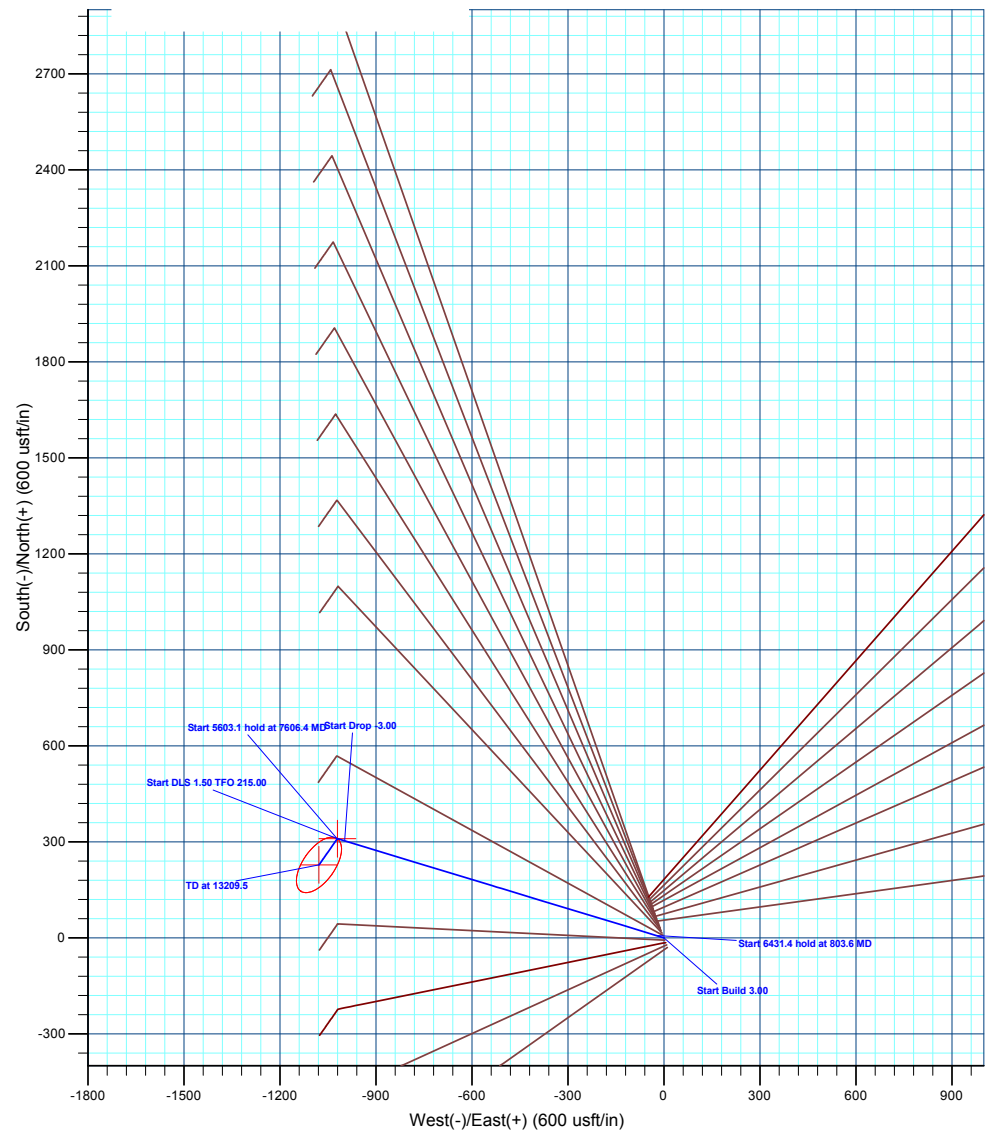
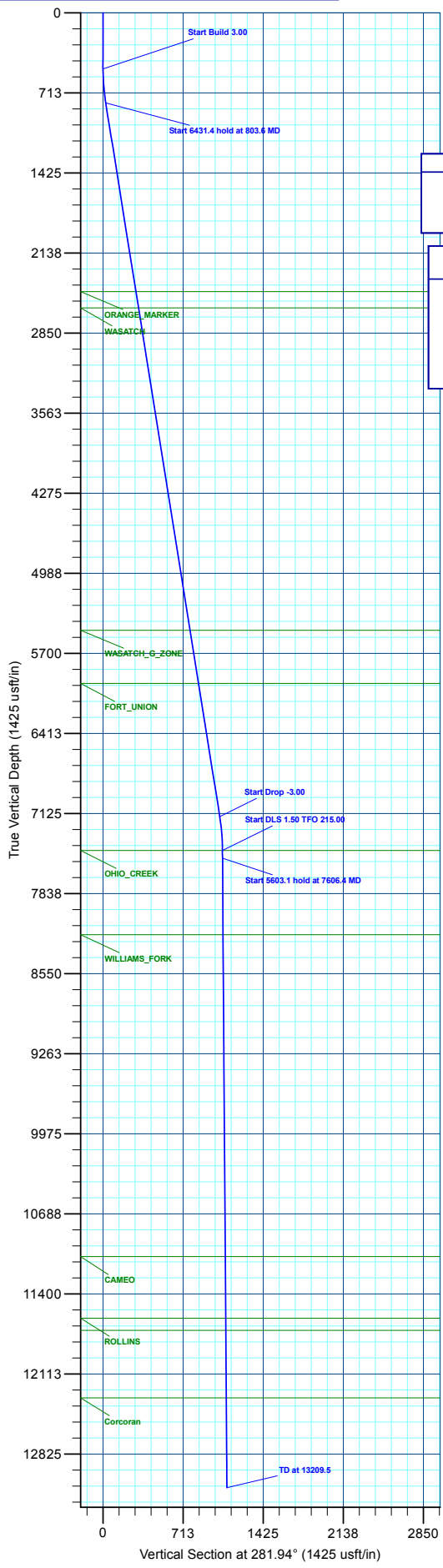
PROJECT DETAILS: Rio Blanco County, CO	
Geodetic System:	Universal Transverse Mercator (US Survey Feet)
Datum:	NAD 1927 - Western US
Ellipsoid:	Clarke 1866
Zone:	Zone 12N (114 W to 108 W)
System Datum:	Mean Sea Level

Azimuths to True North
 Magnetic North: 9.15°

Magnetic Field
 Strength: 51080.6nT
 Dip Angle: 65.83°
 Date: 9/30/2022
 Model: HDGM2022

DESIGN TARGET DETAILS							
Name	TVD	+N/-S	+E/-W	Northing	Easting	Latitude	Longitude
11B-27 - OHCR	7455.0	309.7	-1020.4	14516517.33	2405094.43	39.941728	-108.272077
11B-27 - PBHL	13125.0	227.8	-1077.7	14516433.70	2405039.60	39.941503	-108.272282

SECTION DETAILS										
MD	Inc	Azi	TVD	+N/-S	+E/-W	Dleg	TFace	VSect	Annotation	
0.0	0.00	0.00	0.0	0.0	0.0	0.00	0.00	0.0	Start Build 3.00	
500.0	0.00	0.00	500.0	0.0	0.0	0.00	0.00	0.0	Start 6431.4 hold at 803.6 MD	
803.6	9.11	286.88	802.4	7.0	-23.0	3.00	286.88	24.0	Start Drop -3.00	
7235.0	9.11	286.88	7152.6	302.7	-997.3	3.00	0.00	1038.4	Start DLS 1.50 TFO 215.00	
7538.7	0.00	0.00	7455.0	309.7	-1020.4	3.00	180.00	1062.6	Start DLS 1.50 TFO 215.00	
7606.4	1.02	215.00	7522.8	309.2	-1020.7	1.50	215.00	1062.6	Start 5603.1 hold at 7606.4 MD	
13209.5	1.02	215.00	13125.0	227.8	-1077.7	0.00	0.00	1101.5	TD at 13209.5	



Plan: Prelim #1 (PCU B27 FED 11B-27 197/OH)
 Created By: Will Jircik Date: 19:06, November 01 2022



Caerus Oil & Gas

Rio Blanco County, CO

PCU B27 197 Pad

PCU B27 FED 11B-27 197 - Slot 11B-27

OH

Plan: Prelim #1

KLX Well Planning Report

01 November, 2022



Database:	EDM 5000.1 Single User Db	Local Co-ordinate Reference:	Well PCU B27 FED 11B-27 197 - Slot 11B-27
Company:	Caerus Oil & Gas	TVD Reference:	WELL @ 6540.0usft (30')
Project:	Rio Blanco County, CO	MD Reference:	WELL @ 6540.0usft (30')
Site:	PCU B27 197 Pad	North Reference:	True
Well:	PCU B27 FED 11B-27 197	Survey Calculation Method:	Minimum Curvature
Wellbore:	OH		
Design:	Prelim #1		

Project	Rio Blanco County, CO		
Map System:	Universal Transverse Mercator (US Survey Fee	System Datum:	Mean Sea Level
Geo Datum:	NAD 1927 - Western US		
Map Zone:	Zone 12N (114 W to 108 W)		

Site	PCU B27 197 Pad				
Site Position:		Northing:	14,516,246.40 usft	Latitude:	39.940899
From:	Map	Easting:	2,406,120.80 usft	Longitude:	-108.268449
Position Uncertainty:	0.0 usft	Slot Radius:	13-3/16 "	Grid Convergence:	1.75 °

Well	PCU B27 FED 11B-27 197 - Slot 11B-27					
Well Position	+N/-S	-7.5 usft	Northing:	14,516,239.00 usft	Latitude:	39.940878
	+E/-W	2.8 usft	Easting:	2,406,123.80 usft	Longitude:	-108.268440
Position Uncertainty		0.0 usft	Wellhead Elevation:		Ground Level:	6,510.0 usft

Wellbore	OH
-----------------	----

Magnetics	Model Name	Sample Date	Declination (°)	Dip Angle (°)	Field Strength (nT)
	HDGM2022	9/30/2022	9.15	65.83	51,080.60000000

Design	Prelim #1
---------------	-----------

Audit Notes:	
Version:	Phase: PLAN Tie On Depth: 0.0
Vertical Section:	Depth From (TVD) (usft) +N/-S (usft) +E/-W (usft) Direction (°)
	0.0 0.0 0.0 281.94

Plan Sections											
Measured Depth (usft)	Inclination (°)	Azimuth (°)	Vertical Depth (usft)	+N/-S (usft)	+E/-W (usft)	Dogleg Rate (°/100usft)	Build Rate (°/100usft)	Turn Rate (°/100usft)	TFO (°)	Target	
0.0	0.00	0.00	0.0	0.0	0.0	0.00	0.00	0.00	0.00		
500.0	0.00	0.00	500.0	0.0	0.0	0.00	0.00	0.00	0.00		
803.6	9.11	286.88	802.4	7.0	-23.0	3.00	3.00	0.00	286.88		
7,235.0	9.11	286.88	7,152.6	302.7	-997.3	0.00	0.00	0.00	0.00		
7,538.7	0.00	0.00	7,455.0	309.7	-1,020.4	3.00	-3.00	0.00	180.00	11B-27 - OHCR	
7,606.4	1.02	215.00	7,522.8	309.2	-1,020.7	1.50	1.50	-213.97	215.00		
13,209.5	1.02	215.00	13,125.0	227.8	-1,077.7	0.00	0.00	0.00	0.00	11B-27 - PBHL	



Database:	EDM 5000.1 Single User Db	Local Co-ordinate Reference:	Well PCU B27 FED 11B-27 197 - Slot 11B-27
Company:	Caerus Oil & Gas	TVD Reference:	WELL @ 6540.0usft (30')
Project:	Rio Blanco County, CO	MD Reference:	WELL @ 6540.0usft (30')
Site:	PCU B27 197 Pad	North Reference:	True
Well:	PCU B27 FED 11B-27 197	Survey Calculation Method:	Minimum Curvature
Wellbore:	OH		
Design:	Prelim #1		

Planned Survey									
Measured Depth (usft)	Inclination (°)	Azimuth (°)	Vertical Depth (usft)	+N/-S (usft)	+E/-W (usft)	Vertical Section (usft)	Dogleg Rate (°/100usft)	Build Rate (°/100usft)	Turn Rate (°/100usft)
0.0	0.00	0.00	0.0	0.0	0.0	0.0	0.00	0.00	0.00
100.0	0.00	0.00	100.0	0.0	0.0	0.0	0.00	0.00	0.00
200.0	0.00	0.00	200.0	0.0	0.0	0.0	0.00	0.00	0.00
300.0	0.00	0.00	300.0	0.0	0.0	0.0	0.00	0.00	0.00
400.0	0.00	0.00	400.0	0.0	0.0	0.0	0.00	0.00	0.00
Start Build 3.00									
500.0	0.00	0.00	500.0	0.0	0.0	0.0	0.00	0.00	0.00
600.0	3.00	286.88	600.0	0.8	-2.5	2.6	3.00	3.00	0.00
700.0	6.00	286.88	699.6	3.0	-10.0	10.4	3.00	3.00	0.00
Start 6431.4 hold at 803.6 MD									
803.6	9.11	286.88	802.4	7.0	-23.0	24.0	3.00	3.00	0.00
900.0	9.11	286.88	897.5	11.4	-37.6	39.2	0.00	0.00	0.00
1,000.0	9.11	286.88	996.2	16.0	-52.8	55.0	0.00	0.00	0.00
1,100.0	9.11	286.88	1,095.0	20.6	-67.9	70.7	0.00	0.00	0.00
1,200.0	9.11	286.88	1,193.7	25.2	-83.1	86.5	0.00	0.00	0.00
1,300.0	9.11	286.88	1,292.5	29.8	-98.2	102.3	0.00	0.00	0.00
1,400.0	9.11	286.88	1,391.2	34.4	-113.4	118.1	0.00	0.00	0.00
1,500.0	9.11	286.88	1,489.9	39.0	-128.5	133.8	0.00	0.00	0.00
1,600.0	9.11	286.88	1,588.7	43.6	-143.7	149.6	0.00	0.00	0.00
1,700.0	9.11	286.88	1,687.4	48.2	-158.8	165.4	0.00	0.00	0.00
1,800.0	9.11	286.88	1,786.2	52.8	-174.0	181.1	0.00	0.00	0.00
1,900.0	9.11	286.88	1,884.9	57.4	-189.1	196.9	0.00	0.00	0.00
2,000.0	9.11	286.88	1,983.6	62.0	-204.3	212.7	0.00	0.00	0.00
2,100.0	9.11	286.88	2,082.4	66.6	-219.4	228.5	0.00	0.00	0.00
2,200.0	9.11	286.88	2,181.1	71.2	-234.6	244.2	0.00	0.00	0.00
2,300.0	9.11	286.88	2,279.9	75.8	-249.7	260.0	0.00	0.00	0.00
2,400.0	9.11	286.88	2,378.6	80.4	-264.9	275.8	0.00	0.00	0.00
2,500.0	9.11	286.88	2,477.3	85.0	-280.0	291.5	0.00	0.00	0.00
ORANGE_MARKER									
2,503.7	9.11	286.88	2,481.0	85.2	-280.6	292.1	0.00	0.00	0.00
2,600.0	9.11	286.88	2,576.1	89.6	-295.2	307.3	0.00	0.00	0.00
WASATCH									
2,651.6	9.11	286.88	2,627.0	92.0	-303.0	315.5	0.00	0.00	0.00
2,700.0	9.11	286.88	2,674.8	94.2	-310.3	323.1	0.00	0.00	0.00
2,800.0	9.11	286.88	2,773.5	98.8	-325.5	338.9	0.00	0.00	0.00
2,900.0	9.11	286.88	2,872.3	103.4	-340.6	354.6	0.00	0.00	0.00
3,000.0	9.11	286.88	2,971.0	108.0	-355.8	370.4	0.00	0.00	0.00
3,100.0	9.11	286.88	3,069.8	112.6	-370.9	386.2	0.00	0.00	0.00
3,200.0	9.11	286.88	3,168.5	117.2	-386.1	402.0	0.00	0.00	0.00
3,300.0	9.11	286.88	3,267.2	121.8	-401.2	417.7	0.00	0.00	0.00
3,400.0	9.11	286.88	3,366.0	126.4	-416.4	433.5	0.00	0.00	0.00
3,500.0	9.11	286.88	3,464.7	131.0	-431.5	449.3	0.00	0.00	0.00
3,600.0	9.11	286.88	3,563.5	135.6	-446.7	465.0	0.00	0.00	0.00
3,700.0	9.11	286.88	3,662.2	140.2	-461.8	480.8	0.00	0.00	0.00
3,800.0	9.11	286.88	3,760.9	144.8	-477.0	496.6	0.00	0.00	0.00
3,900.0	9.11	286.88	3,859.7	149.4	-492.1	512.4	0.00	0.00	0.00
4,000.0	9.11	286.88	3,958.4	154.0	-507.3	528.1	0.00	0.00	0.00
4,100.0	9.11	286.88	4,057.2	158.6	-522.4	543.9	0.00	0.00	0.00
4,200.0	9.11	286.88	4,155.9	163.2	-537.6	559.7	0.00	0.00	0.00
4,300.0	9.11	286.88	4,254.6	167.8	-552.7	575.4	0.00	0.00	0.00
4,400.0	9.11	286.88	4,353.4	172.4	-567.8	591.2	0.00	0.00	0.00
4,500.0	9.11	286.88	4,452.1	177.0	-583.0	607.0	0.00	0.00	0.00
4,600.0	9.11	286.88	4,550.8	181.6	-598.1	622.8	0.00	0.00	0.00
4,700.0	9.11	286.88	4,649.6	186.2	-613.3	638.5	0.00	0.00	0.00

Database:	EDM 5000.1 Single User Db	Local Co-ordinate Reference:	Well PCU B27 FED 11B-27 197 - Slot 11B-27
Company:	Caerus Oil & Gas	TVD Reference:	WELL @ 6540.0usft (30')
Project:	Rio Blanco County, CO	MD Reference:	WELL @ 6540.0usft (30')
Site:	PCU B27 197 Pad	North Reference:	True
Well:	PCU B27 FED 11B-27 197	Survey Calculation Method:	Minimum Curvature
Wellbore:	OH		
Design:	Prelim #1		

Planned Survey									
Measured Depth (usft)	Inclination (°)	Azimuth (°)	Vertical Depth (usft)	+N/-S (usft)	+E/-W (usft)	Vertical Section (usft)	Dogleg Rate (°/100usft)	Build Rate (°/100usft)	Turn Rate (°/100usft)
4,800.0	9.11	286.88	4,748.3	190.8	-628.4	654.3	0.00	0.00	0.00
4,900.0	9.11	286.88	4,847.1	195.4	-643.6	670.1	0.00	0.00	0.00
5,000.0	9.11	286.88	4,945.8	200.0	-658.7	685.9	0.00	0.00	0.00
5,100.0	9.11	286.88	5,044.5	204.5	-673.9	701.6	0.00	0.00	0.00
5,200.0	9.11	286.88	5,143.3	209.1	-689.0	717.4	0.00	0.00	0.00
5,300.0	9.11	286.88	5,242.0	213.7	-704.2	733.2	0.00	0.00	0.00
5,400.0	9.11	286.88	5,340.8	218.3	-719.3	748.9	0.00	0.00	0.00
5,500.0	9.11	286.88	5,439.5	222.9	-734.5	764.7	0.00	0.00	0.00
WASATCH_G_ZONE									
5,557.2	9.11	286.88	5,496.0	225.6	-743.2	773.7	0.00	0.00	0.00
5,600.0	9.11	286.88	5,538.2	227.5	-749.6	780.5	0.00	0.00	0.00
5,700.0	9.11	286.88	5,637.0	232.1	-764.8	796.3	0.00	0.00	0.00
5,800.0	9.11	286.88	5,735.7	236.7	-779.9	812.0	0.00	0.00	0.00
5,900.0	9.11	286.88	5,834.5	241.3	-795.1	827.8	0.00	0.00	0.00
6,000.0	9.11	286.88	5,933.2	245.9	-810.2	843.6	0.00	0.00	0.00
FORT_UNION									
6,036.3	9.11	286.88	5,969.0	247.6	-815.7	849.3	0.00	0.00	0.00
6,100.0	9.11	286.88	6,031.9	250.5	-825.4	859.3	0.00	0.00	0.00
6,200.0	9.11	286.88	6,130.7	255.1	-840.5	875.1	0.00	0.00	0.00
6,300.0	9.11	286.88	6,229.4	259.7	-855.7	890.9	0.00	0.00	0.00
6,400.0	9.11	286.88	6,328.1	264.3	-870.8	906.7	0.00	0.00	0.00
6,500.0	9.11	286.88	6,426.9	268.9	-886.0	922.4	0.00	0.00	0.00
6,600.0	9.11	286.88	6,525.6	273.5	-901.1	938.2	0.00	0.00	0.00
6,700.0	9.11	286.88	6,624.4	278.1	-916.3	954.0	0.00	0.00	0.00
6,800.0	9.11	286.88	6,723.1	282.7	-931.4	969.8	0.00	0.00	0.00
6,900.0	9.11	286.88	6,821.8	287.3	-946.6	985.5	0.00	0.00	0.00
7,000.0	9.11	286.88	6,920.6	291.9	-961.7	1,001.3	0.00	0.00	0.00
7,100.0	9.11	286.88	7,019.3	296.5	-976.9	1,017.1	0.00	0.00	0.00
7,200.0	9.11	286.88	7,118.1	301.1	-992.0	1,032.8	0.00	0.00	0.00
Start Drop -3.00									
7,235.0	9.11	286.88	7,152.6	302.7	-997.3	1,038.4	0.00	0.00	0.00
7,300.0	7.16	286.88	7,217.0	305.4	-1,006.1	1,047.5	3.00	-3.00	0.00
7,400.0	4.16	286.88	7,316.5	308.3	-1,015.6	1,057.3	3.00	-3.00	0.00
7,500.0	1.16	286.88	7,416.3	309.6	-1,020.0	1,062.0	3.00	-3.00	0.00
Start DLS 1.50 TFO 215.00 - OHIO_CREEK									
7,538.7	0.00	0.00	7,455.0	309.7	-1,020.4	1,062.4	3.00	-3.00	0.00
Start 5603.1 hold at 7606.4 MD									
7,606.4	1.02	215.00	7,522.8	309.2	-1,020.7	1,062.6	1.50	1.50	0.00
7,700.0	1.02	215.00	7,616.3	307.9	-1,021.7	1,063.2	0.00	0.00	0.00
7,800.0	1.02	215.00	7,716.3	306.4	-1,022.7	1,063.9	0.00	0.00	0.00
7,900.0	1.02	215.00	7,816.3	305.0	-1,023.7	1,064.6	0.00	0.00	0.00
8,000.0	1.02	215.00	7,916.3	303.5	-1,024.7	1,065.3	0.00	0.00	0.00
8,100.0	1.02	215.00	8,016.3	302.1	-1,025.7	1,066.0	0.00	0.00	0.00
8,200.0	1.02	215.00	8,116.2	300.6	-1,026.8	1,066.7	0.00	0.00	0.00
WILLIAMS_FORK									
8,288.8	1.02	215.00	8,205.0	299.3	-1,027.7	1,067.3	0.00	0.00	0.00
8,300.0	1.02	215.00	8,216.2	299.1	-1,027.8	1,067.4	0.00	0.00	0.00
8,400.0	1.02	215.00	8,316.2	297.7	-1,028.8	1,068.1	0.00	0.00	0.00
8,500.0	1.02	215.00	8,416.2	296.2	-1,029.8	1,068.8	0.00	0.00	0.00
8,600.0	1.02	215.00	8,516.2	294.8	-1,030.8	1,069.5	0.00	0.00	0.00
8,700.0	1.02	215.00	8,616.2	293.3	-1,031.8	1,070.2	0.00	0.00	0.00
8,800.0	1.02	215.00	8,716.1	291.9	-1,032.9	1,070.9	0.00	0.00	0.00
8,900.0	1.02	215.00	8,816.1	290.4	-1,033.9	1,071.6	0.00	0.00	0.00

Database:	EDM 5000.1 Single User Db	Local Co-ordinate Reference:	Well PCU B27 FED 11B-27 197 - Slot 11B-27
Company:	Caerus Oil & Gas	TVD Reference:	WELL @ 6540.0usft (30')
Project:	Rio Blanco County, CO	MD Reference:	WELL @ 6540.0usft (30')
Site:	PCU B27 197 Pad	North Reference:	True
Well:	PCU B27 FED 11B-27 197	Survey Calculation Method:	Minimum Curvature
Wellbore:	OH		
Design:	Prelim #1		

Planned Survey										
Measured Depth (usft)	Inclination (°)	Azimuth (°)	Vertical Depth (usft)	+N/-S (usft)	+E/-W (usft)	Vertical Section (usft)	Dogleg Rate (°/100usft)	Build Rate (°/100usft)	Turn Rate (°/100usft)	
9,000.0	1.02	215.00	8,916.1	289.0	-1,034.9	1,072.3	0.00	0.00	0.00	
9,100.0	1.02	215.00	9,016.1	287.5	-1,035.9	1,073.0	0.00	0.00	0.00	
9,200.0	1.02	215.00	9,116.1	286.1	-1,036.9	1,073.7	0.00	0.00	0.00	
9,300.0	1.02	215.00	9,216.1	284.6	-1,037.9	1,074.4	0.00	0.00	0.00	
9,400.0	1.02	215.00	9,316.1	283.2	-1,039.0	1,075.1	0.00	0.00	0.00	
9,500.0	1.02	215.00	9,416.0	281.7	-1,040.0	1,075.8	0.00	0.00	0.00	
9,600.0	1.02	215.00	9,516.0	280.3	-1,041.0	1,076.5	0.00	0.00	0.00	
9,700.0	1.02	215.00	9,616.0	278.8	-1,042.0	1,077.1	0.00	0.00	0.00	
9,800.0	1.02	215.00	9,716.0	277.3	-1,043.0	1,077.8	0.00	0.00	0.00	
9,900.0	1.02	215.00	9,816.0	275.9	-1,044.1	1,078.5	0.00	0.00	0.00	
10,000.0	1.02	215.00	9,916.0	274.4	-1,045.1	1,079.2	0.00	0.00	0.00	
10,100.0	1.02	215.00	10,015.9	273.0	-1,046.1	1,079.9	0.00	0.00	0.00	
10,200.0	1.02	215.00	10,115.9	271.5	-1,047.1	1,080.6	0.00	0.00	0.00	
10,300.0	1.02	215.00	10,215.9	270.1	-1,048.1	1,081.3	0.00	0.00	0.00	
10,400.0	1.02	215.00	10,315.9	268.6	-1,049.1	1,082.0	0.00	0.00	0.00	
10,500.0	1.02	215.00	10,415.9	267.2	-1,050.2	1,082.7	0.00	0.00	0.00	
10,600.0	1.02	215.00	10,515.9	265.7	-1,051.2	1,083.4	0.00	0.00	0.00	
10,700.0	1.02	215.00	10,615.8	264.3	-1,052.2	1,084.1	0.00	0.00	0.00	
10,800.0	1.02	215.00	10,715.8	262.8	-1,053.2	1,084.8	0.00	0.00	0.00	
10,900.0	1.02	215.00	10,815.8	261.4	-1,054.2	1,085.5	0.00	0.00	0.00	
11,000.0	1.02	215.00	10,915.8	259.9	-1,055.2	1,086.2	0.00	0.00	0.00	
11,100.0	1.02	215.00	11,015.8	258.5	-1,056.3	1,086.9	0.00	0.00	0.00	
CAMEO										
11,152.2	1.02	215.00	11,068.0	257.7	-1,056.8	1,087.2	0.00	0.00	0.00	
11,200.0	1.02	215.00	11,115.8	257.0	-1,057.3	1,087.6	0.00	0.00	0.00	
11,300.0	1.02	215.00	11,215.8	255.6	-1,058.3	1,088.3	0.00	0.00	0.00	
11,400.0	1.02	215.00	11,315.7	254.1	-1,059.3	1,089.0	0.00	0.00	0.00	
11,500.0	1.02	215.00	11,415.7	252.6	-1,060.3	1,089.7	0.00	0.00	0.00	
11,600.0	1.02	215.00	11,515.7	251.2	-1,061.4	1,090.4	0.00	0.00	0.00	
11,700.0	1.02	215.00	11,615.7	249.7	-1,062.4	1,091.1	0.00	0.00	0.00	
ROLLINS										
11,702.3	1.02	215.00	11,618.0	249.7	-1,062.4	1,091.1	0.00	0.00	0.00	
11,800.0	1.02	215.00	11,715.7	248.3	-1,063.4	1,091.7	0.00	0.00	0.00	
COZZETTE										
11,809.3	1.02	215.00	11,725.0	248.2	-1,063.5	1,091.8	0.00	0.00	0.00	
11,900.0	1.02	215.00	11,815.7	246.8	-1,064.4	1,092.4	0.00	0.00	0.00	
12,000.0	1.02	215.00	11,915.6	245.4	-1,065.4	1,093.1	0.00	0.00	0.00	
12,100.0	1.02	215.00	12,015.6	243.9	-1,066.4	1,093.8	0.00	0.00	0.00	
12,200.0	1.02	215.00	12,115.6	242.5	-1,067.5	1,094.5	0.00	0.00	0.00	
12,300.0	1.02	215.00	12,215.6	241.0	-1,068.5	1,095.2	0.00	0.00	0.00	
12,400.0	1.02	215.00	12,315.6	239.6	-1,069.5	1,095.9	0.00	0.00	0.00	
Corcoran										
12,409.4	1.02	215.00	12,325.0	239.4	-1,069.6	1,096.0	0.00	0.00	0.00	
12,500.0	1.02	215.00	12,415.6	238.1	-1,070.5	1,096.6	0.00	0.00	0.00	
12,600.0	1.02	215.00	12,515.6	236.7	-1,071.5	1,097.3	0.00	0.00	0.00	
12,700.0	1.02	215.00	12,615.5	235.2	-1,072.5	1,098.0	0.00	0.00	0.00	
12,800.0	1.02	215.00	12,715.5	233.8	-1,073.6	1,098.7	0.00	0.00	0.00	
12,900.0	1.02	215.00	12,815.5	232.3	-1,074.6	1,099.4	0.00	0.00	0.00	
13,000.0	1.02	215.00	12,915.5	230.8	-1,075.6	1,100.1	0.00	0.00	0.00	
13,100.0	1.02	215.00	13,015.5	229.4	-1,076.6	1,100.8	0.00	0.00	0.00	
TD at 13209.5										
13,209.5	1.02	215.00	13,125.0	227.8	-1,077.7	1,101.5	0.00	0.00	0.00	

Database:	EDM 5000.1 Single User Db	Local Co-ordinate Reference:	Well PCU B27 FED 11B-27 197 - Slot 11B-27
Company:	Caerus Oil & Gas	TVD Reference:	WELL @ 6540.0usft (30')
Project:	Rio Blanco County, CO	MD Reference:	WELL @ 6540.0usft (30')
Site:	PCU B27 197 Pad	North Reference:	True
Well:	PCU B27 FED 11B-27 197	Survey Calculation Method:	Minimum Curvature
Wellbore:	OH		
Design:	Prelim #1		

Design Targets

Target Name

- hit/miss target - Shape	Dip Angle (°)	Dip Dir. (°)	TVD (usft)	+N/-S (usft)	+E/-W (usft)	Northing (usft)	Easting (usft)	Latitude	Longitude
11B-27 - OHCR - plan hits target center - Point	0.00	0.00	7,455.0	309.7	-1,020.4	14,516,517.33	2,405,094.43	39.941728	-108.272077
11B-27 - PBHL - plan hits target center - Ellipse (radii L100.0 W50.0 on 215.00 azi)	0.00	0.00	13,125.0	227.8	-1,077.7	14,516,433.70	2,405,039.60	39.941503	-108.272282

Formations

Measured Depth (usft)	Vertical Depth (usft)	Name	Lithology	Dip (°)	Dip Direction (°)
2,503.7	2,481.0	ORANGE_MARKER			
2,651.6	2,627.0	WASATCH			
5,557.2	5,496.0	WASATCH_G_ZONE			
6,036.3	5,969.0	FORT_UNION			
7,538.7	7,455.0	OHIO_CREEK			
8,288.8	8,205.0	WILLIAMS_FORK			
11,152.2	11,068.0	CAMEO			
11,702.3	11,618.0	ROLLINS			
11,809.3	11,725.0	COZZETTE			
12,409.4	12,325.0	Corcoran			

Plan Annotations

Measured Depth (usft)	Vertical Depth (usft)	Local Coordinates		Comment
		+N/-S (usft)	+E/-W (usft)	
500.0	500.0	0.0	0.0	Start Build 3.00
803.6	802.4	7.0	-23.0	Start 6431.4 hold at 803.6 MD
7,235.0	7,152.6	302.7	-997.3	Start Drop -3.00
7,538.7	7,455.0	309.7	-1,020.4	Start DLS 1.50 TFO 215.00
7,606.4	7,522.8	309.2	-1,020.7	Start 5603.1 hold at 7606.4 MD
13,209.5	13,125.0	227.8	-1,077.7	TD at 13209.5