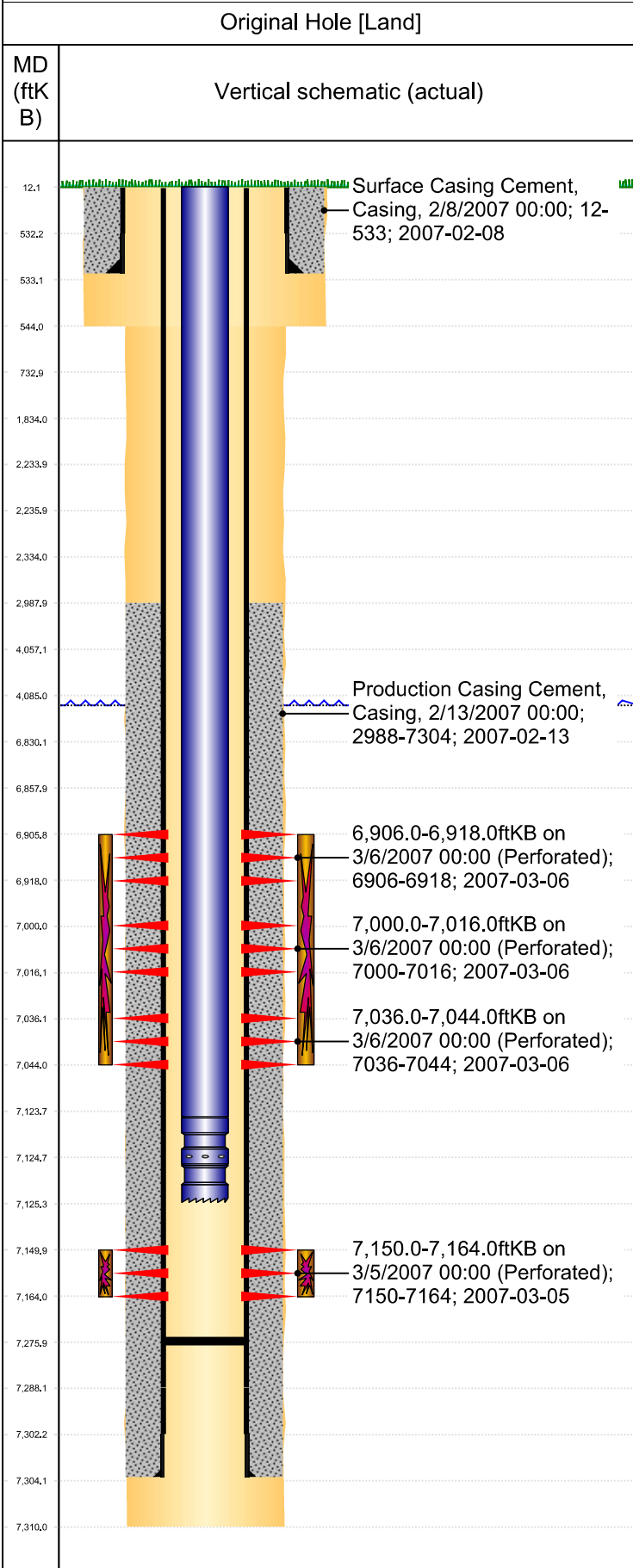




# P&A Wellbore For State

Well Name: STROHAUER 27-14



Well Header									
Surface UWI 0512324673		Business Unit Rockies		Gov Auth Dist		Prod Tree Loc Land			
Orig. KB to Gnd (ft) 12.00		Original Spud Date 2/8/2007		Abandon Date		Well Sub-Status SI		High... N	
Comment DEVIATED WELL AND CONFLICTING FGS DATA									
Surface Location (Congressional)									
Qtr 3 NW	Qtr 4 NE	Section 14	Twnshp 4	Twnsh... N	Range 65	Rng E/... W	Latitude (°) 40,3181	Longitude (°) -104,62794	
Wellbore Sections									
Section Des		Hole Size (in)		Top Depth (ftKB)		Btm Depth (ftKB)			
SURFACE		12 1/4		12.0		544.0			
PRODUCTION		7 7/8		544.0		7,310.0			
Casing Strings									
Csg Des		Run Date		OD (in)		Wt/Len (lb/ft)		Grade	
Surface		2/8/2007		8 5/8		24.00		J-55	
Production Casing		2/14/2007		4 1/2		11.60		I-80	
Top Depth (MD) (ftKB)		Set Depth (MD) (ftKB)							
12		533							
12		7304							
Cement									
Des		Start Date		Top (ftKB)		Btm (ftKB)			
SURFACE CASING CEMENT		2/8/2007		12.0		533.0			
PRODUCTION CASING CEMENT		2/13/2007		2,988.0		7,304.0			
Zone Statuses									
Zone Name		Status Date		Status		Fluid Type		Job	
NIOBRARA		4/9/2007		PR				DRILLING/COMPLETION - ORIGINAL, 2/8/2007...	
NIOBRARA		2/22/2014		PR				DRILLING/COMPLETION - ORIGINAL, 2/8/2007...	
CODELL		4/9/2007		PR				DRILLING/COMPLETION - ORIGINAL, 2/8/2007...	
CODELL		2/22/2014		PR				DRILLING/COMPLETION - ORIGINAL, 2/8/2007...	
Prod Method		Flowing							
Flowing		Flowing							
Flowing		Flowing							
Flowing		Flowing							
Perforation Data									
Linked Zone		Explosive Type		Entered Shot Total		Top (ftKB)		Btm (ftKB)	
NIOBRARA, Original Hole		A		36		6,906.0		6,918.0	
NIOBRARA, Original Hole		B		48		7,000.0		7,016.0	
NIOBRARA, Original Hole		C		24		7,036.0		7,044.0	
CODELL, Original Hole				56		7,150.0		7,164.0	
Date		3/6/2007							
3/6/2007		3/6/2007							
3/6/2007		3/6/2007							
3/5/2007		3/5/2007							
Stim/Frac Stage									
Zone		Start Date		Top (ftKB)		Btm (ftKB)			
NIOBRARA, Original Hole		3/6/2007		6,906.0		7,044.0			
CODELL, Original Hole		3/6/2007		7,150.0		7,164.0			
Other In Hole									
Run Date		Des		Make		OD (in)		Top (ftKB)	
Logs									
Date		Type				Depth Top (MD) (ftKB)		Btm (ftKB)	
2/13/2007		COMPENSATED NEUTRON				534		7,304.0	
2/13/2007		DIRECTIONAL SURVEY				534		7,304.0	
2/13/2007		INDUCTION				534		7,304.0	
2/13/2007		INDUCTION				534		7,304.0	
2/13/2007		MICRO LOG				534		7,304.0	
2/13/2007		MICRO LOG				534		7,304.0	
3/2/2007		CEMENT BOND				2,870		7,273.0	
Wellbore Plug Back Total Depths									
Date		Type		Com				PBTD (ftKB)	
2/13/2007		FLOAT COLLAR		TOP OF FLOAT COLLAR				7,288	
3/2/2007		FILL		DEPTH LOGGER ON CBL				7,276	