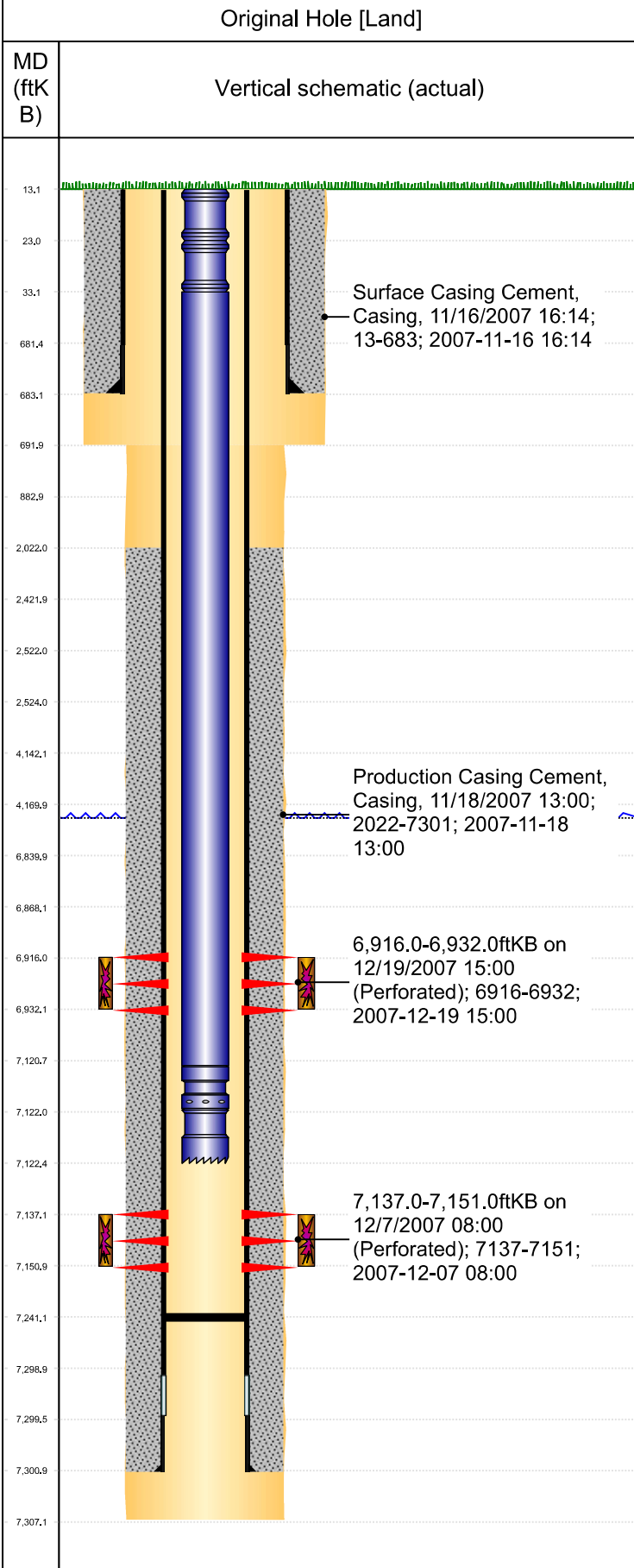




P&A Wellbore For State

Well Name: MOSER H34-20



Well Header											
Surface UWI 0512326545		Business Unit Rockies		Gov Auth Dist		Prod Tree Loc Land					
Orig. KB to Gnd (ft) 13.00		Original Spud Date 11/15/2007		Abandon Date		Well Sub-Status SI		High... N			
Comment # OF SURF CSG JTS UNKNOWN. STATE SHOWS SHUT IN SINCE OCT 2016.											
Surface Location (Congressional)											
Qtr 3 SE	Qtr 4 NW	Section 34	Twncshp 3	Twncsh... N	Range 65	Rng E/... W	Latitude (°) 40.18231608	Longitude (°) -104.654276071			
Wellbore Sections											
Section Des		Hole Size (in)		Top Depth (ftKB)		Btm Depth (ftKB)					
Surface		12 1/4		13.0		692.0					
Production		7 7/8		692.0		7,307.0					
Casing Strings											
Csg Des		Run Date		OD (in)		Wt/Len (lb/ft)		Grade		Top Depth (MD) (ftKB)	Set Depth (MD) (ftKB)
Surface		11/15/2007		8 5/8		24.00		J-55		13	683
Production Casing		11/19/2007		4 1/2		11.60		M-80		13	7301
Cement											
Des		Start Date		Top (ftKB)		Btm (ftKB)					
Surface Casing Cement		11/16/2007		13.0		683.0					
Production Casing Cement		11/18/2007		2,022.0		7,301.0					
Zone Statuses											
Zone Name	Status Date	Status	Fluid Type	Job			Prod Method				
CODELL	2/8/2008	PR		DRILLING/COMPLETION - ORIGINAL, 11/15/200...			Flowing				
CODELL	3/8/2010	PR									
NIOBRARA	2/8/2008	PR		DRILLING/COMPLETION - ORIGINAL, 11/15/200...			Flowing				
NIOBRARA	3/8/2010	PR									
Perforation Data											
Linked Zone		Explosive Type	Entered Shot Total	Top (ftKB)		Btm (ftKB)		Date			
NIOBRARA, Original Hole		B	64	6,916.0		6,932.0		12/19/2007			
CODELL, Original Hole			56	7,137.0		7,151.0		12/7/2007			
Stim/Frac Stage											
Zone		Start Date		Top (ftKB)		Btm (ftKB)					
NIOBRARA, Original Hole		12/19/2007		6,916.0		6,932.0					
CODELL, Original Hole		12/19/2007		7,137.0		7,151.0					
Other In Hole											
Run Date	Des		Make	OD (in)	Top (ftKB)		Btm (ftKB)				
Logs											
Date	Type				Depth Top (MD) (ftKB)		Btm (ftKB)				
11/18/2007	Caliper				2,350		7,303.0				
11/18/2007	Comp Neu / Dens				2,350		7,303.0				
11/18/2007	DIL/GL/GR				2,350		7,303.0				
12/6/2007	Cement Bond				1,920		7,252.0				
2/8/2014	GYRO				13		7,100.0				
2/8/2014	GYRO				1,920		7,252.0				
Wellbore Plug Back Total Depths											
Date	Type		Com				PBTD (ftKB)				
7/24/2008	FILL						7,259				
1/8/2015	FILL		TBG TALLY MEASUREMENT.				7,241				