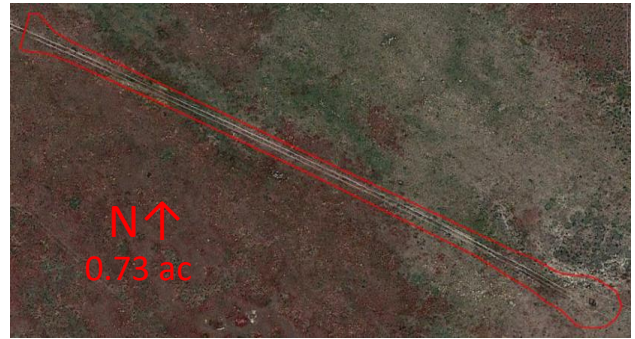


Reclamation Corrective Action Inspection

Date of Inspection	12/18/2023
Inspector Name	Levi Johnson, Fortress DS
Location Name	Tania Blue D 2-14
COGCC Loc ID	328891
County	Weld
Location Directions	FROM CR 53 and CR 34 GO E/ APX 2.5MI TO ACCESS RD CONT N/ 2MI THEN CONT NW/ .28MI CONT SW/ .2MI CONT SE/ APX .2MI TO WELL SITE TANIA BLUE D2-14 @ GPS PT (40.248624,-104.520338)
Weeds or Debris	Location is mowed, annual and perennial vegetation is evident
Visual Est. of Vegetative Cover	Location is in final reclamation phase, perennial vegetation beginning to establish
Stormwater	No stormwater issues observed
Additional Notes	none
Recommendations	Monitor establishment of perennial grasses and forbs, implement weed control plan and mowing for annual weeds
Reclamation/Stormwater Corrective Action Procedure	In response to ECMC Inspection 713900116, location was mowed and inner seeded with Sandy Loam Native Mix applied at 20 lbs/acre.
Photos	Below, show that mowing and innerseeding have been done



Reclamation Corrective Action Inspection

Additional Pictures

