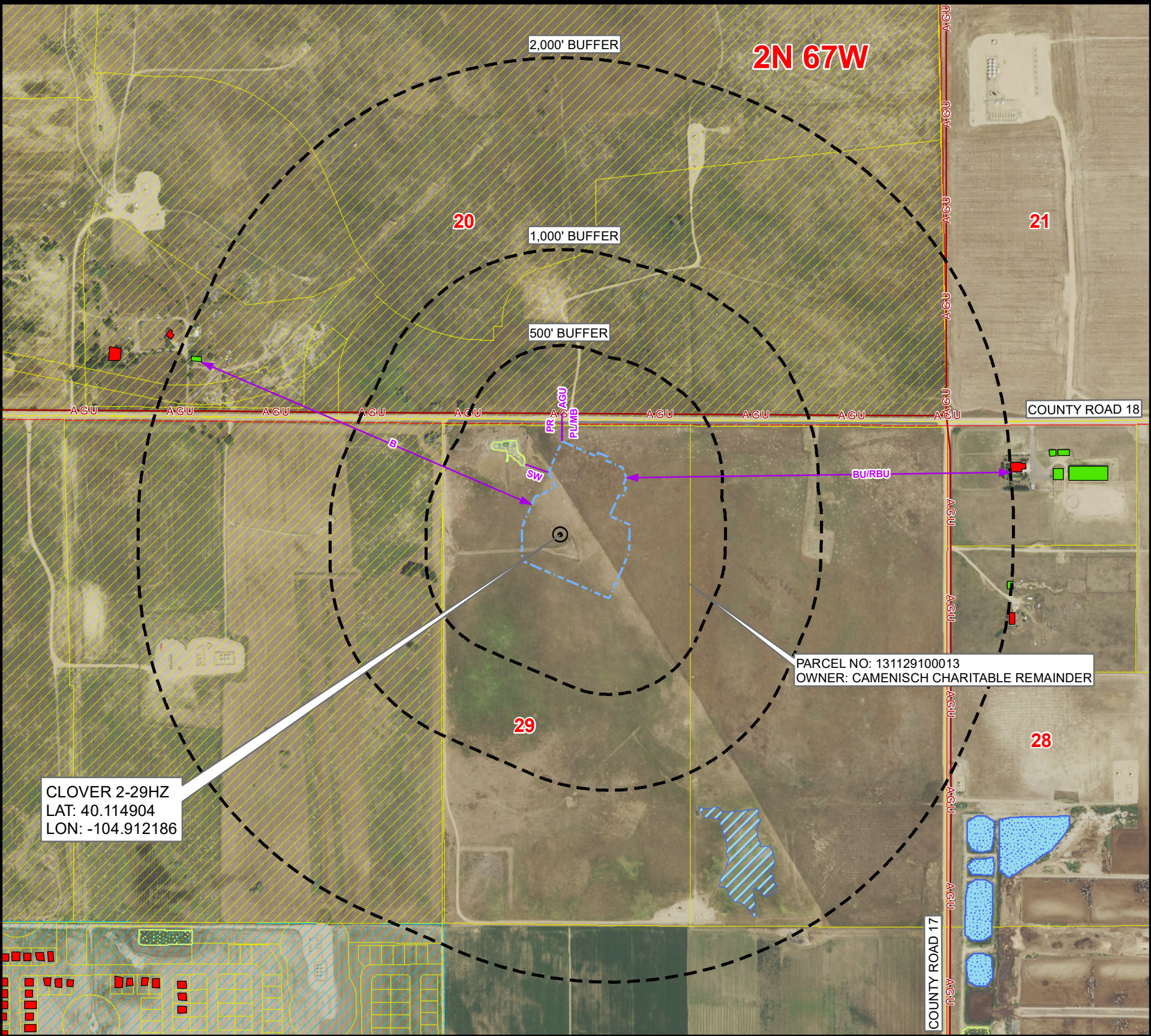


CULTURAL FEATURES MAP
CLOVER 2-29HZ

SECTION 29, TOWNSHIP 2 NORTH, RANGE 67 WEST, 6TH P.M., WELD COUNTY, COLORADO



# OF CULTURAL FEATURES WITHIN	0-500 FEET	501-1,000 FEET	1,001-2,000 FEET
BUILDING UNIT (RESIDENTIAL & NON-RESIDENTIAL)	0	0	0
RESIDENTIAL BUILDING UNIT	0	0	0
HIGH OCCUPANCY BUILDING UNIT	0	0	0
SCHOOL PROPERTY	0	0	0
SCHOOL FACILITY	0	0	0
DESIGNATED OUTSIDE ACTIVITY AREA	0	0	0

NOTE:
THIS MAP IS A COMPILATION OF PUBLICLY AVAILABLE DATA. THE ACCURACY AND COMPLETENESS OF SAID DATA HAS NOT BEEN VERIFIED BY 609 CONSULTING, LLC. EXISTING CONDITIONS MAY DIFFER FROM WHAT IS SHOWN.

MEASURED FROM THE NEAREST		EDGE OF WORKING PAD
B	BUILDING	±1874' NW
BU	BUILDING UNIT	±2003' E
RBU	RESIDENTIAL BUILDING UNIT	±2003' E
HOBU	HIGH OCCUPANCY BUILDING UNIT	5280'+
DOAA	DESIGNATED OUTSIDE ACTIVITY AREA	5280'+
PR	PUBLIC ROAD	±100' N
AGU	ABOVE GROUND UTILITY	±146' N
RR	RAILROAD	5280'+
PL	PROPERTY LINE	±113' N
S	SCHOOL FACILITY	5280'+
CC	CHILD CARE CENTER	5280'+
DIC	DISPROPORTIONATELY IMPACTED COMMUNITY BOUNDARY	5280'+
MB	MUNICIPALITY BOUNDARY	±113' N
CB	COUNTY BOUNDARY	5280'+
SW	SURFACE WATER	±130' W
PWS	PUBLIC WATER SYSTEM SUPPLY WELL	2640'+
HPH	HIGH PRIORITY HABITAT	5280'+
RHSD	RBU, HOBU, OR SCHOOL FACILITY WITHIN A DI COMMUNITY	5280'+

Legend

- PROPOSED REFERENCE POINT

PROPOSED WORKING PAD SURFACE

BUFFER

BUILDING

NON-RESIDENTIAL BUILDING UNIT

RESIDENTIAL BUILDING UNIT

HEALTH FACILITY

SCHOOL FACILITY

CHILD CARE FACILITY

A-GU- ABOVE GROUND UTILITY
- PUBLIC ROAD

RAILROAD

DITCH/CANAL/DRAINAGE

DISPROPORTIONATELY IMPACTED COMMUNITY

PARCEL BOUNDARY

FREDERICK JURISDICTIONAL BOUNDARY

FIRESTONE JURISDICTIONAL BOUNDARY

RULE 411.b 2640' BUFFER

RIPARIAN CORRIDOR
- DELINEATED WETLANDS

RIVERINE CORRIDOR

FRESHWATER EMERGENT WETLAND

FRESHWATER FORESTED/SHRUB WETLAND

LAKE

FRESHWATER POND

100-YEAR FLOODPLAIN (EFFECTIVE, 2016)

100-YEAR FLOODWAY (PRELIMINARY, 2020)

100-YEAR FLOODPLAIN (PRELIMINARY, 2020)

Kerr-McGee Oil &
Gas Onshore LP
1099 18th Street
Denver, Colorado 80202



Drawn by: AK
Revised: AK
Date: 5 Jun 2023
Date: 2 Aug 2023

LOVELAND OFFICE
6706 North Franklin Avenue
Loveland, Colorado 80538
Phone 970-776-4331
SHERIDAN OFFICE
1095 Saberton Avenue
Sheridan, Wyoming 82801
Phone 307-674-0609



NAD83 CO-Nft
Scale: 1" = 600ft