

WELL PAD LOCATION PICTURES
CLOVER 2-29HZ

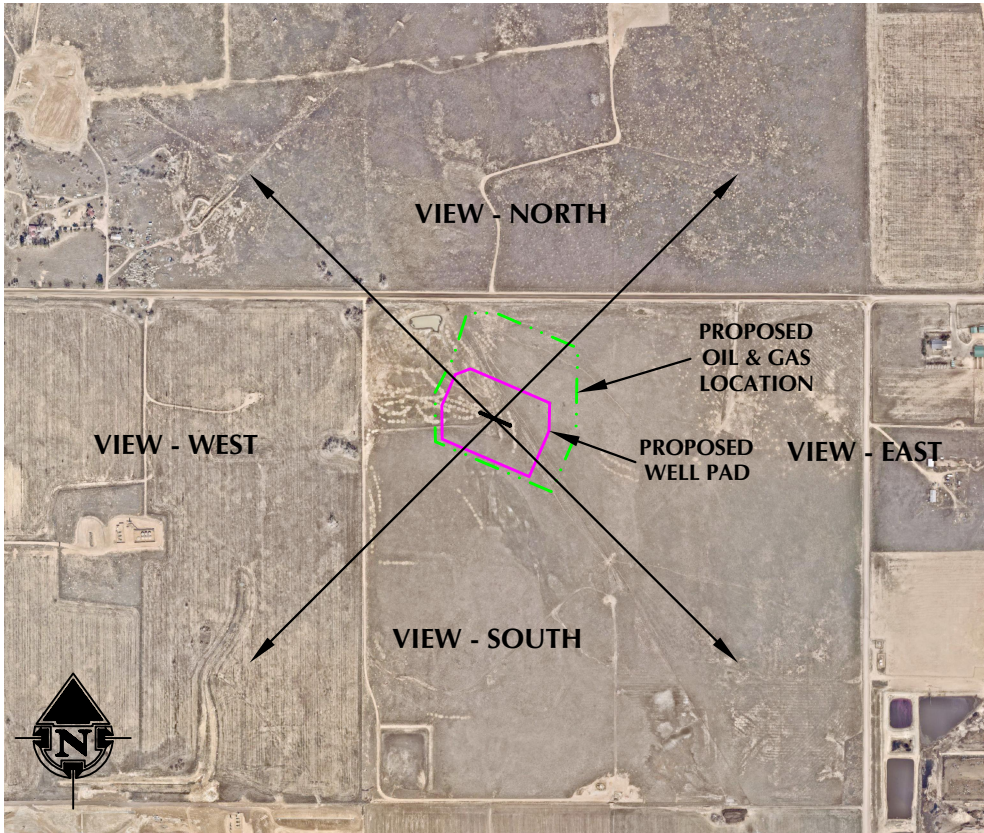
NW1/4 NE1/4 SECTION 29, TOWNSHIP 2 NORTH, RANGE 67 WEST, 6TH P.M., WELD COUNTY, COLORADO



LOCATION PICTURE OF CLOVER 2-29HZ WELL PAD - CAMERA VIEW NORTH



LOCATION PICTURE OF CLOVER 2-29HZ WELL PAD - CAMERA VIEW SOUTH



VIEW - OVERHEAD
AERIAL IMAGERY COURTESY OF NEARMAP
2022-09-04



LOCATION PICTURE OF CLOVER 2-29HZ WELL PAD - CAMERA VIEW EAST



LOCATION PICTURE OF CLOVER 2-29HZ WELL PAD - CAMERA VIEW WEST

K:\ANADARKO\2021-2022_LB_POPPY_T2N_R67W_SEC_29DWG\POPPY_T2N_R67W_SEC_29.dwg, 6/5/2023 2:18:53 PM, sundberg



LOVELAND OFFICE
6706 North Franklin Avenue
Loveland, Colorado 80538
Phone 970-776-4331

SHERIDAN OFFICE
1095 Saberton Avenue
Sheridan, Wyoming 82801
Phone 307-674-0609

CONSULTING, LLC

Kerr-McGee Oil &
Gas Onshore LP
1099 18th Street
Denver, Colorado 80202

DATE SURVEYED: 5/2/23
DATE: 6/5/23
DRAFTER: GLK
REVISED:

DATA SOURCES:
-AERIAL IMAGERY COURTESY OF NEARMAP.