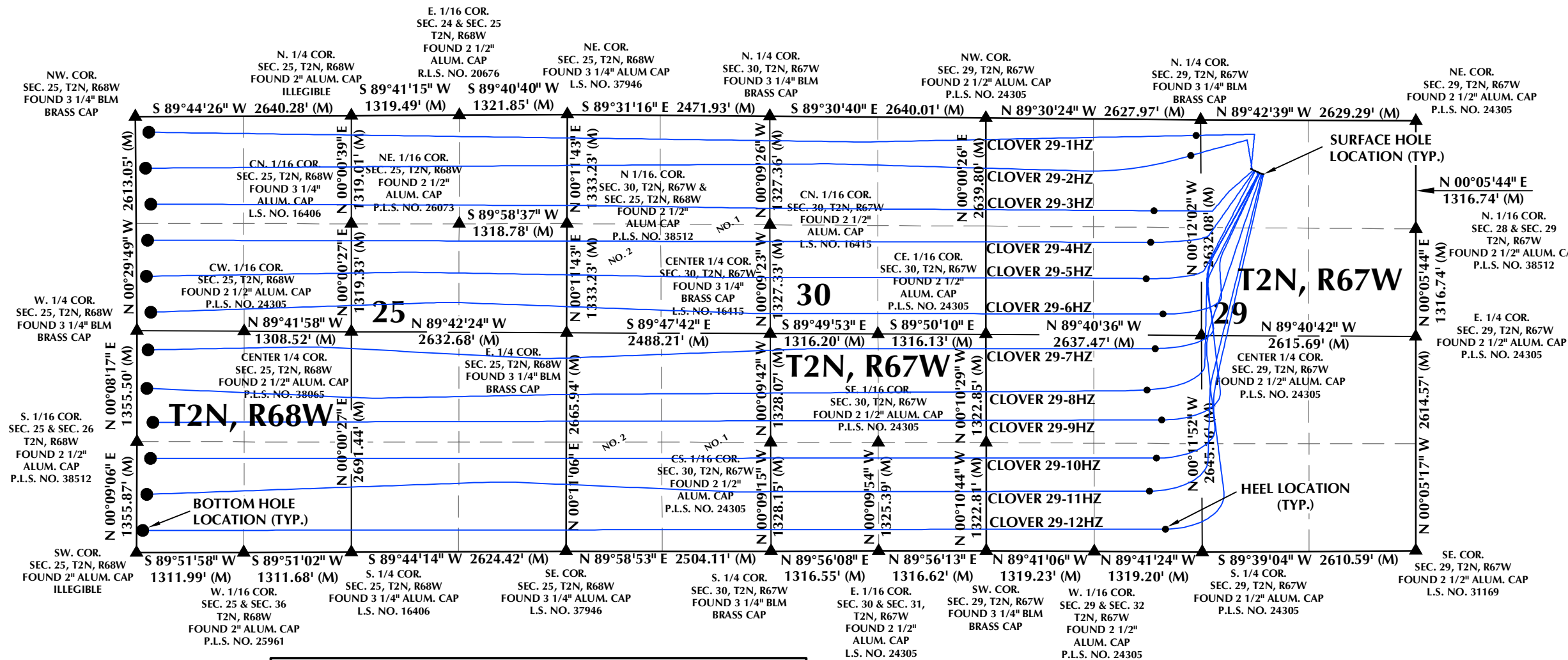
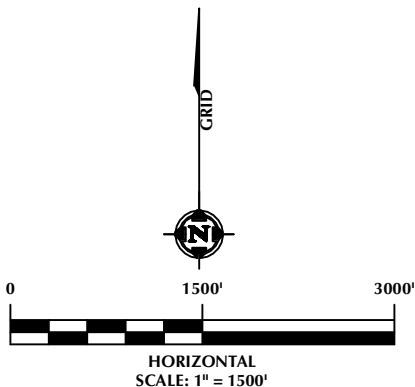
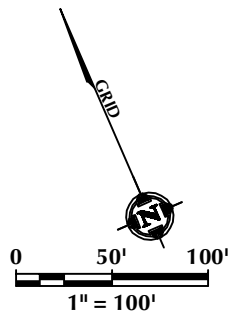
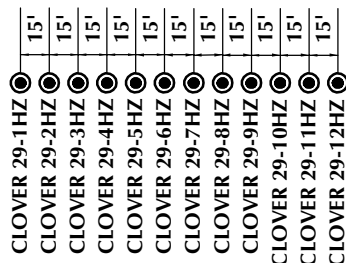


DIRECTIONAL WELL PLAT (COGCC) / MULTI-WELL PLAN (OGED)  
SECTIONS 29 & 30, T2N, R67W & SECTION 25, T2N, R68W, 6TH P.M.



WELL NOTES:  
CLOVER 29-1HZ  
SURFACE HOLE LOCATION: 599' FNL, 2014' FEL (SEC. 29, T2N, R67W)  
HEEL LOCATION: 190' FNL, 2570' FWL (SEC. 29, T2N, R67W)  
BOTTOM HOLE LOCATION: 191' FNL, 161' FWL (SEC. 25, T2N, R68W)  
CLOVER 29-2HZ  
SURFACE HOLE LOCATION: 605' FNL, 2000' FEL (SEC. 29, T2N, R67W)  
HEEL LOCATION: 437' FNL, 2505' FWL (SEC. 29, T2N, R67W)  
BOTTOM HOLE LOCATION: 630' FNL, 120' FWL (SEC. 25, T2N, R68W)  
CLOVER 29-3HZ  
SURFACE HOLE LOCATION: 611' FNL, 1986' FEL (SEC. 29, T2N, R67W)  
HEEL LOCATION: 1115' FNL, 2056' FWL (SEC. 29, T2N, R67W)  
BOTTOM HOLE LOCATION: 1070' FNL, 178' FWL (SEC. 25, T2N, R68W)  
CLOVER 29-4HZ  
SURFACE HOLE LOCATION: 616' FNL, 1972' FEL (SEC. 29, T2N, R67W)  
HEEL LOCATION: 1500' FNL, 2016' FWL (SEC. 29, T2N, R67W)  
BOTTOM HOLE LOCATION: 1511' FNL, 137' FWL (SEC. 25, T2N, R68W)  
CLOVER 29-5HZ  
SURFACE HOLE LOCATION: 622' FNL, 1958' FEL (SEC. 29, T2N, R67W)  
HEEL LOCATION: 1944' FNL, 1960' FWL (SEC. 29, T2N, R67W)  
BOTTOM HOLE LOCATION: 1951' FNL, 120' FWL (SEC. 25, T2N, R68W)  
CLOVER 29-6HZ  
SURFACE HOLE LOCATION: 628' FNL, 1945' FEL (SEC. 29, T2N, R67W)  
HEEL LOCATION: 2376' FNL, 2168' FWL (SEC. 29, T2N, R67W)  
BOTTOM HOLE LOCATION: 2390' FNL, 167' FWL (SEC. 25, T2N, R68W)  
CLOVER 29-7HZ  
SURFACE HOLE LOCATION: 634' FNL, 1931' FEL (SEC. 29, T2N, R67W)  
HEEL LOCATION: 2480' FNL, 2069' FWL (SEC. 29, T2N, R67W)  
BOTTOM HOLE LOCATION: 2475' FNL, 134' FWL (SEC. 25, T2N, R68W)  
CLOVER 29-8HZ  
SURFACE HOLE LOCATION: 640' FNL, 1917' FEL (SEC. 29, T2N, R67W)  
HEEL LOCATION: 1975' FNL, 1970' FWL (SEC. 29, T2N, R67W)  
BOTTOM HOLE LOCATION: 2006' FNL, 120' FWL (SEC. 25, T2N, R68W)  
CLOVER 29-9HZ  
SURFACE HOLE LOCATION: 646' FNL, 1903' FEL (SEC. 29, T2N, R67W)  
HEEL LOCATION: 1609' FNL, 2149' FWL (SEC. 29, T2N, R67W)  
BOTTOM HOLE LOCATION: 1590' FNL, 193' FWL (SEC. 25, T2N, R68W)  
CLOVER 29-10HZ  
SURFACE HOLE LOCATION: 652' FNL, 1890' FEL (SEC. 29, T2N, R67W)  
HEEL LOCATION: 1142' FNL, 2082' FWL (SEC. 29, T2N, R67W)  
BOTTOM HOLE LOCATION: 1150' FNL, 167' FWL (SEC. 25, T2N, R68W)  
CLOVER 29-11HZ  
SURFACE HOLE LOCATION: 658' FNL, 1876' FEL (SEC. 29, T2N, R67W)  
HEEL LOCATION: 739' FNL, 1994' FWL (SEC. 29, T2N, R67W)  
BOTTOM HOLE LOCATION: 710' FNL, 120' FWL (SEC. 25, T2N, R68W)  
CLOVER 29-12HZ  
SURFACE HOLE LOCATION: 663' FNL, 1862' FEL (SEC. 29, T2N, R67W)  
HEEL LOCATION: 275' FNL, 2190' FWL (SEC. 29, T2N, R67W)  
BOTTOM HOLE LOCATION: 270' FNL, 75' FWL (SEC. 25, T2N, R68W)

WELL HEAD SPACING DETAIL



- NOTES:
- ▲ INDICATES SECTION CORNER.
  - INDICATES CALCULATED CORNER.
  - BASIS OF BEARINGS DERIVED FROM COLORADO COORDINATE SYSTEM OF 1983, NORTH ZONE.
  - ALL MEASURED DISTANCES ARE GRID.
  - COMBINED SCALE FACTOR: .99972239 CALCULATED FROM THE E. 1/4 CORNER OF SECTION 30, T2N, R67W.
  - WELL FOOTAGES ARE MEASURED AT RIGHT ANGLES TO THE SECTION LINES.



LOVELAND OFFICE  
6706 North Franklin Avenue  
Loveland, Colorado 80538  
Phone 970-776-4331  
  
SHERIDAN OFFICE  
1095 Saberton Avenue  
Sheridan, Wyoming 82801  
Phone 307-674-0609

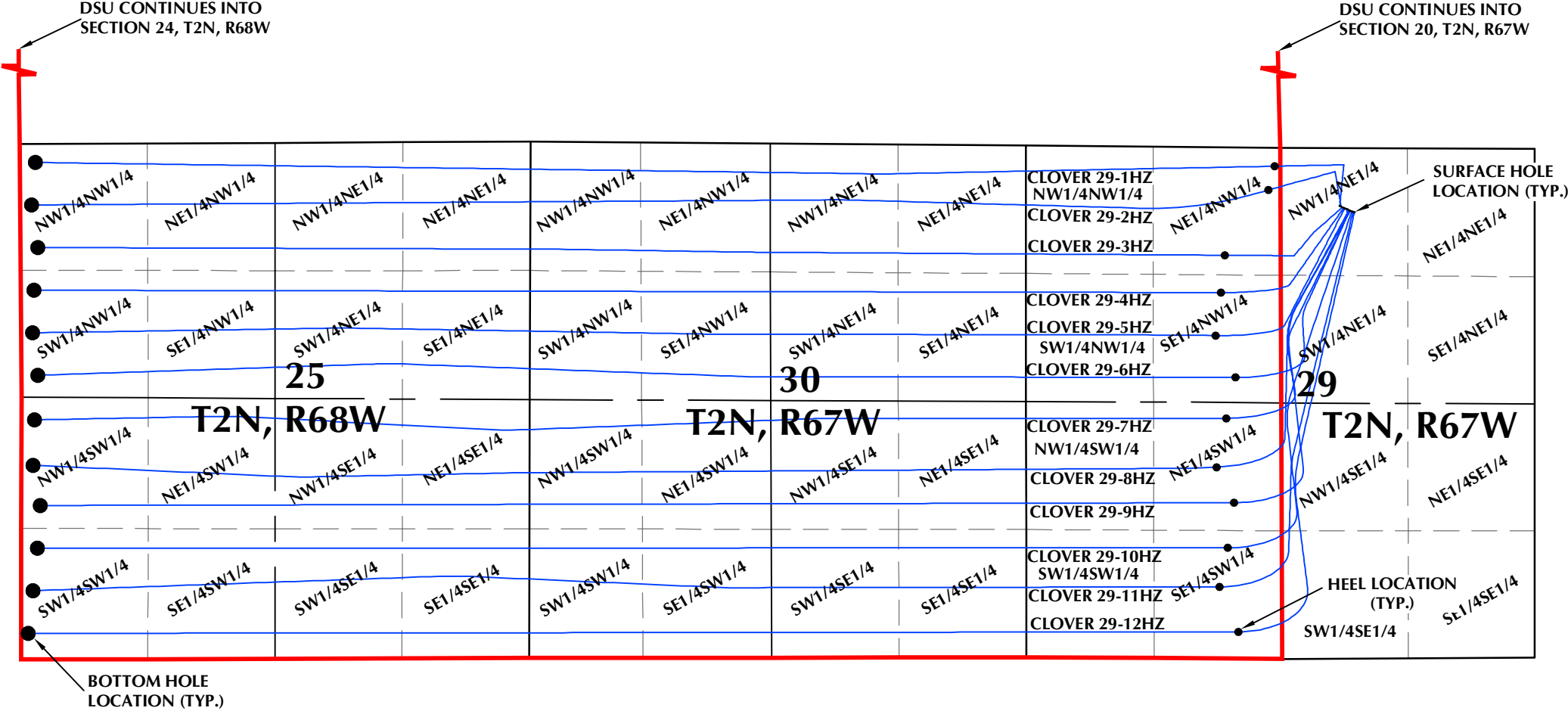
Kerr-McGee Oil &  
Gas Onshore LP  
1099 18th Street  
Denver, Colorado 80202

WELL PAD - CLOVER 2-29HZ

DIRECTIONAL WELL PLAT (COGCC) /  
MULTI-WELL PLAN (OGED)  
CLOVER 29-1HZ, CLOVER 29-2HZ, CLOVER 29-3HZ,  
CLOVER 29-4HZ, CLOVER 29-5HZ, CLOVER 29-6HZ,  
CLOVER 29-7HZ, CLOVER 29-8HZ, CLOVER 29-9HZ,  
CLOVER 29-10HZ, CLOVER 29-11HZ & CLOVER 29-12HZ  
LOCATED IN SECTIONS 29 & 30, T2N, R67W &  
SECTION 25, T2N, R68W, 6TH P.M.  
WELD COUNTY, COLORADO

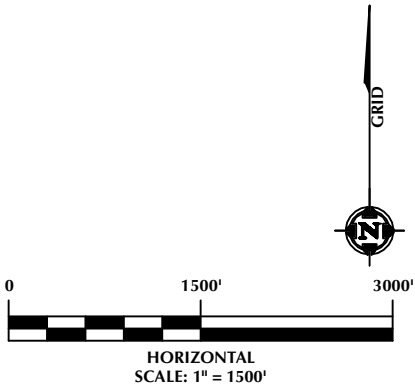
DRAFTED BY:	SJM	CHECKED BY:	RKF	SHEET NO:
DATE DRAFTED:	6/2/23	DATE SURVEYED:	5/2/23	1A
REVISED:		FILE NAME:	22-126	1A OF 1

DIRECTIONAL WELL PLAT (COGCC) / MULTI-WELL PLAN (OGED)  
SECTIONS 29 & 30, T2N, R67W & SECTION 25, T2N, R68W, 6TH P.M.



LEGEND:

- DSU BOUNDARY
- WELLBORE TRAJECTORY
- HEEL LOCATION
- BOTTOM HOLE LOCATION



LOVELAND OFFICE  
6706 North Franklin Avenue  
Loveland, Colorado 80538  
Phone 970-776-4331

SHERIDAN OFFICE  
1095 Saberton Avenue  
Sheridan, Wyoming 82801  
Phone 307-674-0609

**Kerr-McGee Oil &  
Gas Onshore LP**  
1099 18th Street  
Denver, Colorado 80202

WELL PAD - CLOVER 2-29HZ

DIRECTIONAL WELL PLAT (COGCC) /  
MULTI-WELL PLAN (OGED)  
CLOVER 29-1HZ, CLOVER 29-2HZ, CLOVER 29-3HZ,  
CLOVER 29-4HZ, CLOVER 29-5HZ, CLOVER 29-6HZ,  
CLOVER 29-7HZ, CLOVER 29-8HZ, CLOVER 29-9HZ,  
CLOVER 29-10HZ, CLOVER 29-11HZ & CLOVER 29-12HZ  
LOCATED IN SECTIONS 29 & 30, T2N, R67W &  
SECTION 25, T2N, R68W, 6TH P.M.  
WELD COUNTY, COLORADO

DRAFTED BY:	SJM	CHECKED BY:	RKF	SHEET NO:
DATE DRAFTED:	6/2/23	DATE SURVEYED:	5/2/23	1B
REVISED:		FILE NAME:	22-126	1B OF 1