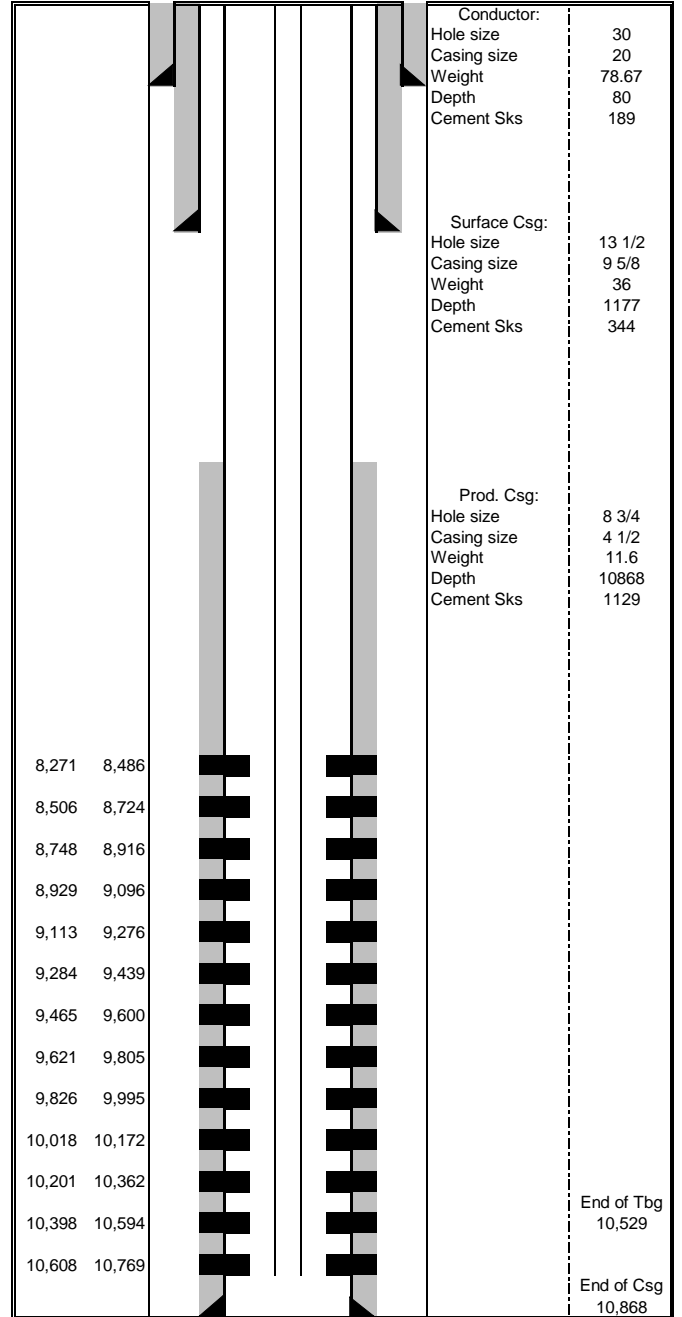


Leverich SR 421-24 Wellbore Diagram

Well	Pad	API	
Leverich SR 421-24	South Leverich 13-09	05-045-24565	
Diagram Date	Spud Date	First Production Date	
12/13/2023	7/31/2023	11/27/2023	
Location	Meridian	County	
Lot 3	6th	Garfield	
Top Perf	Bottom Perf	Current EOT	
8,271	10,769	10,529	
Bottom Surf Csg	Bottom Prod Csg	TOC	
1,177	10,868	3,870	
TD	TVD	Elevation	
10,868	9,977	8,007	
PBTD	PBTVD	KB	
10,823	9,932	8,037	

Formation Tops	
Wasatch	1,547
Wasatch G	4,712
Ohio Creek	7,613
Williams Fork	7,998
Cameo	10,056
Rollins	10,811



Conductor:	
Hole size	30
Casing size	20
Weight	78.67
Depth	80
Cement Sks	189
Surface Csg:	
Hole size	13 1/2
Casing size	9 5/8
Weight	36
Depth	1177
Cement Sks	344
Prod. Csg:	
Hole size	8 3/4
Casing size	4 1/2
Weight	11.6
Depth	10868
Cement Sks	1129

