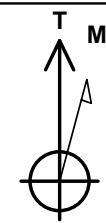


PDC Energy Inc. DJ Basin



HEN 14N
 Hen Pad
 North American Datum 1983 , US State Plane 1983, Colorado Northern Zone
 Ground Elevation: 4779.0
 +N/-S +E/-W Northing Easting Latitude Longitude
 0.0 0.0 1363640.32 3258633.05 40.327880 -104.572340
 P272 - RKB 28.5' Well @ 4807.5ft (P272 - RKB 28.5')

Hen Pad
 HEN 14N
 HEN 14N Final Surveys
 10:12, November 29 2023



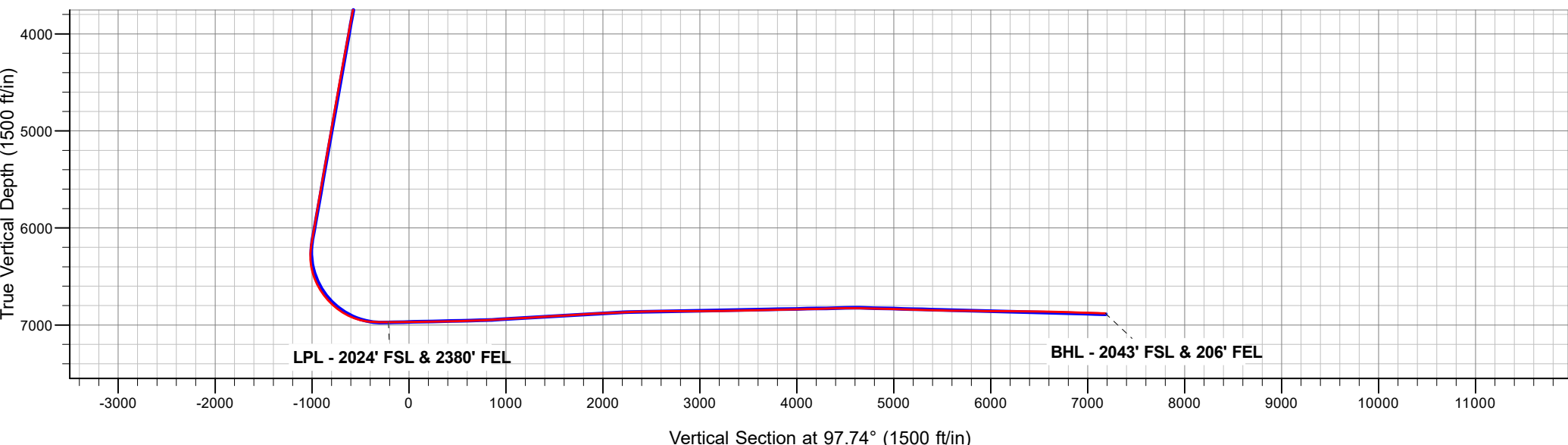
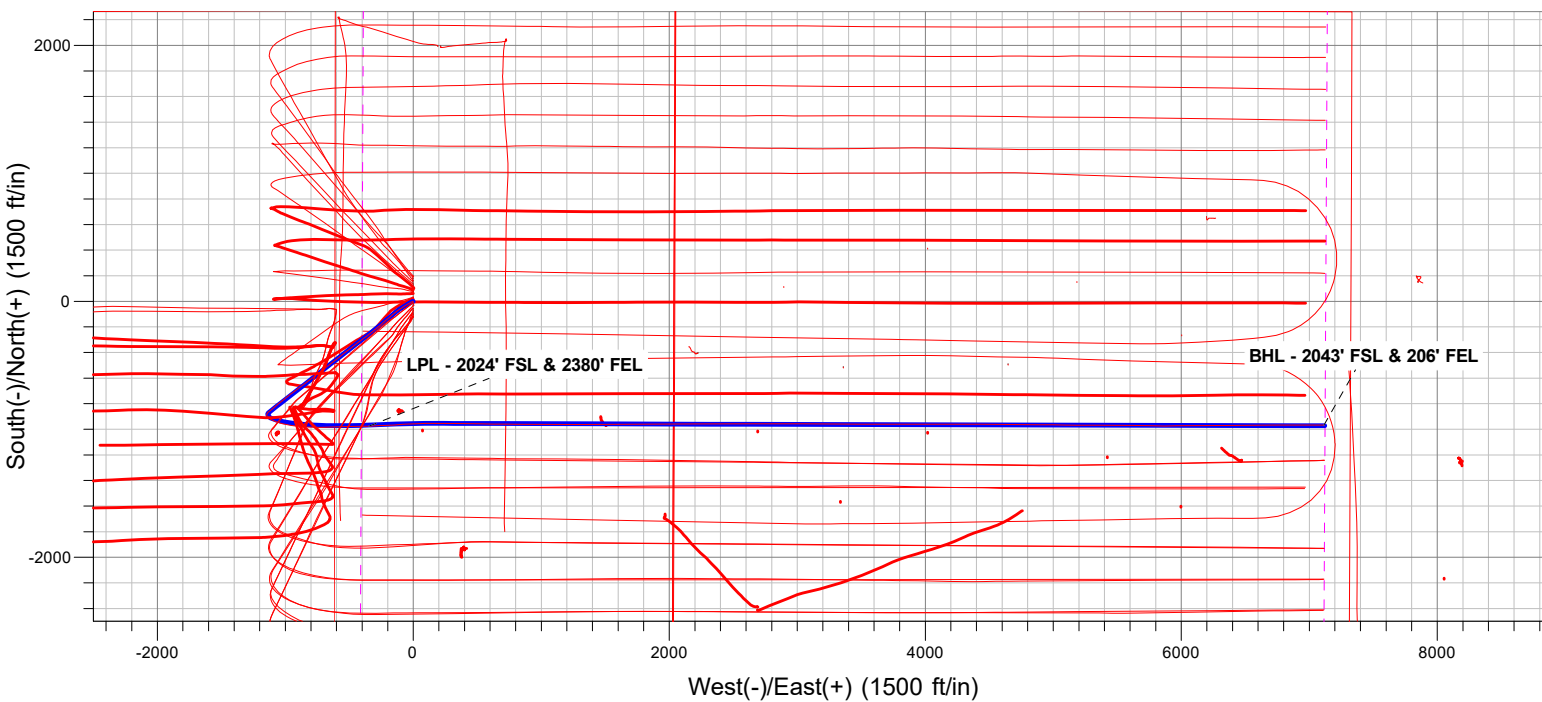
Azimuths to True North
 Magnetic North: 7.67°

Magnetic Field
 Strength: 51702.0nT
 Dip Angle: 66.58°
 Date: 09/09/2023
 Model: HRGM

ANNOTATIONS

MD	TVD	Annotation
7664.0	6970.6	LPL - 2024' FSL & 2380' FEL
15131.0	6879.2	BHL - 2043' FSL & 206' FEL

FINAL SURVEY
Projected Bottom Hole Location
 15131' MD / 6879.2' TVD
 88.55° INC / 90.96° AZM
 2043' FSL / 206' FEL



PDC Energy Inc. DJ Basin

SEC.8-T4N-R64W

Hen Pad

HEN 14N

HEN 14N

Design: HEN 14N Final Surveys

Survey Report - Geographic

29 November, 2023

Ensign

Survey Report - Geographic

Company: PDC Energy Inc. DJ Basin	Local Co-ordinate Reference: Well HEN 14N
Project: SEC.8-T4N-R64W	TVD Reference: Well @ 4807.5ft (P272 - RKB 28.5')
Site: Hen Pad	MD Reference: Well @ 4807.5ft (P272 - RKB 28.5')
Well: HEN 14N	North Reference: True
Wellbore: HEN 14N	Survey Calculation Method: Minimum Curvature
Design: HEN 14N Final Surveys	Database: US_EDM

Project SEC.8-T4N-R64W, Weld County, Colorado	
Map System: US State Plane 1983	System Datum: Mean Sea Level
Geo Datum: North American Datum 1983	
Map Zone: Colorado Northern Zone	Using geodetic scale factor

Site Hen Pad		
Site Position:	Northing: 1,363,685.50 usft	Latitude: 40.328004
From: Lat/Long	Easting: 3,258,631.47 usft	Longitude: -104.572344
Position Uncertainty: 0.0 ft	Slot Radius: 13-3/16 "	Grid Convergence: 0.60 °

Well HEN 14N		
Well Position +N/-S 0.0 ft	Northing: 1,363,640.32 usft	Latitude: 40.327880
+E/-W 0.0 ft	Easting: 3,258,633.05 usft	Longitude: -104.572340
Position Uncertainty 0.0 ft	Wellhead Elevation: ft	Ground Level: 4,779.0 ft

Wellbore HEN 14N					
Magnetics	Model Name	Sample Date	Declination (°)	Dip Angle (°)	Field Strength (nT)
	HRGM	09/09/2023	7.67	66.58	51,701.98433026

Design HEN 14N Final Surveys				
Audit Notes:				
Version: 1.0	Phase: ACTUAL	Tie On Depth: 0.0		
Vertical Section:	Depth From (TVD) (ft)	+N/-S (ft)	+E/-W (ft)	Direction (°)
	0.0	0.0	0.0	97.74

Survey Program		Date 11/29/2023
From (ft)	To (ft)	Survey (Wellbore)
159.5	15,131.0	Survey #1 (HEN 14N)
		Tool Name MWD
		Description MWD - Standard

Survey									
Measured Depth (ft)	Inclination (°)	Azimuth (°)	Vertical Depth (ft)	+N/-S (ft)	+E/-W (ft)	Map Northing (usft)	Map Easting (usft)	Latitude	Longitude
0.0	0.00	0.00	0.0	0.0	0.0	1,363,640.32	3,258,633.05	40.327880	-104.572340
159.5	0.79	291.23	159.5	0.4	-1.0	1,363,640.71	3,258,632.02	40.327881	-104.572344
249.5	2.37	252.73	249.5	0.1	-3.4	1,363,640.36	3,258,629.67	40.327880	-104.572352
340.5	4.22	245.53	340.3	-1.9	-8.2	1,363,638.36	3,258,624.85	40.327875	-104.572370
456.5	6.77	240.25	455.8	-7.0	-18.0	1,363,633.10	3,258,615.08	40.327861	-104.572405
545.5	7.30	237.62	544.1	-12.7	-27.4	1,363,627.37	3,258,605.81	40.327845	-104.572438
629.5	8.49	237.97	627.3	-18.8	-37.1	1,363,621.12	3,258,596.11	40.327828	-104.572473
715.5	9.23	238.32	712.3	-25.8	-48.4	1,363,614.02	3,258,584.94	40.327809	-104.572514
801.5	10.64	241.13	797.0	-33.3	-61.2	1,363,606.43	3,258,572.19	40.327789	-104.572560
888.5	12.40	239.55	882.2	-41.9	-76.3	1,363,597.66	3,258,557.20	40.327765	-104.572614
977.5	13.63	238.85	968.9	-52.1	-93.5	1,363,587.21	3,258,540.09	40.327737	-104.572676
1,066.5	14.07	235.33	1,055.3	-63.7	-111.4	1,363,575.45	3,258,522.34	40.327705	-104.572740

Ensign

Survey Report - Geographic

Company:	PDC Energy Inc. DJ Basin	Local Co-ordinate Reference:	Well HEN 14N
Project:	SEC.8-T4N-R64W	TVD Reference:	Well @ 4807.5ft (P272 - RKB 28.5')
Site:	Hen Pad	MD Reference:	Well @ 4807.5ft (P272 - RKB 28.5')
Well:	HEN 14N	North Reference:	True
Wellbore:	HEN 14N	Survey Calculation Method:	Minimum Curvature
Design:	HEN 14N Final Surveys	Database:	US_EDM

Survey										
Measured Depth (ft)	Inclination (°)	Azimuth (°)	Vertical Depth (ft)	+N/-S (ft)	+E/-W (ft)	Map Northing (usft)	Map Easting (usft)	Latitude	Longitude	
1,151.5	14.16	230.58	1,137.8	-76.2	-127.9	1,363,562.80	3,258,505.95	40.327671	-104.572799	
1,237.5	13.98	228.65	1,221.2	-89.7	-143.8	1,363,549.09	3,258,490.16	40.327634	-104.572856	
1,322.5	13.98	229.00	1,303.7	-103.3	-159.3	1,363,535.41	3,258,474.85	40.327597	-104.572912	
1,407.5	14.33	230.76	1,386.1	-116.7	-175.2	1,363,521.85	3,258,459.10	40.327560	-104.572969	
1,495.5	15.12	230.58	1,471.2	-130.8	-192.5	1,363,507.50	3,258,441.95	40.327521	-104.573031	
1,582.5	14.60	231.64	1,555.3	-144.8	-209.9	1,363,493.31	3,258,424.73	40.327482	-104.573093	
1,672.5	13.98	230.06	1,642.5	-158.9	-227.1	1,363,479.11	3,258,407.65	40.327444	-104.573155	
1,687.5	13.98	228.30	1,657.1	-161.2	-229.8	1,363,476.71	3,258,404.93	40.327437	-104.573165	
1,829.0	12.77	228.89	1,794.7	-182.9	-254.4	1,363,454.80	3,258,380.62	40.327378	-104.573253	
1,927.0	13.88	229.44	1,890.1	-197.6	-271.5	1,363,439.86	3,258,363.68	40.327338	-104.573314	
2,025.0	14.11	228.59	1,985.2	-213.2	-289.4	1,363,424.13	3,258,345.96	40.327295	-104.573378	
2,124.0	14.61	233.34	2,081.1	-228.6	-308.4	1,363,408.50	3,258,327.05	40.327252	-104.573446	
2,222.0	14.49	232.31	2,176.0	-243.5	-328.0	1,363,393.42	3,258,307.59	40.327212	-104.573517	
2,318.0	14.40	232.61	2,268.9	-258.1	-347.0	1,363,378.63	3,258,288.76	40.327172	-104.573585	
2,416.0	14.25	232.60	2,363.9	-272.8	-366.3	1,363,363.70	3,258,269.65	40.327131	-104.573654	
2,513.0	13.78	233.70	2,458.0	-286.9	-385.1	1,363,349.42	3,258,251.00	40.327092	-104.573721	
2,610.0	13.79	231.86	2,552.2	-300.9	-403.5	1,363,335.25	3,258,232.75	40.327054	-104.573787	
2,707.0	14.42	232.85	2,646.3	-315.3	-422.2	1,363,320.62	3,258,214.18	40.327015	-104.573855	
2,805.0	15.06	232.72	2,741.0	-330.4	-442.1	1,363,305.33	3,258,194.49	40.326973	-104.573926	
2,902.0	15.19	232.69	2,834.7	-345.7	-462.2	1,363,289.79	3,258,174.51	40.326931	-104.573998	
2,998.0	14.08	232.56	2,927.6	-360.5	-481.5	1,363,274.86	3,258,155.39	40.326891	-104.574067	
3,097.0	14.96	232.81	3,023.4	-375.5	-501.2	1,363,259.61	3,258,135.81	40.326849	-104.574138	
3,193.0	14.52	232.34	3,116.2	-390.3	-520.6	1,363,244.57	3,258,116.57	40.326809	-104.574207	
3,291.0	14.31	231.90	3,211.2	-405.3	-539.9	1,363,229.39	3,258,097.47	40.326767	-104.574277	
3,389.0	14.70	232.19	3,306.0	-420.4	-559.2	1,363,214.09	3,258,078.28	40.326726	-104.574346	
3,486.0	14.19	231.78	3,400.0	-435.3	-578.3	1,363,198.99	3,258,059.37	40.326685	-104.574414	
3,585.0	14.00	232.52	3,496.0	-450.1	-597.3	1,363,184.00	3,258,040.49	40.326644	-104.574483	
3,680.0	14.20	232.70	3,588.1	-464.2	-615.7	1,363,169.76	3,258,022.25	40.326606	-104.574549	
3,779.0	14.82	232.67	3,684.0	-479.2	-635.4	1,363,154.52	3,258,002.69	40.326565	-104.574619	
3,875.0	15.23	232.12	3,776.7	-494.4	-655.2	1,363,139.13	3,257,983.13	40.326523	-104.574690	
3,971.0	14.91	232.04	3,869.4	-509.7	-674.8	1,363,123.58	3,257,963.60	40.326481	-104.574761	
4,068.0	14.82	231.87	3,963.1	-525.1	-694.4	1,363,108.04	3,257,944.17	40.326439	-104.574831	
4,166.0	14.25	232.08	4,058.0	-540.2	-713.8	1,363,092.69	3,257,924.96	40.326397	-104.574900	
4,263.0	14.50	231.74	4,152.0	-555.1	-732.8	1,363,077.64	3,257,906.16	40.326356	-104.574968	
4,360.0	14.19	232.39	4,245.9	-569.9	-751.7	1,363,062.66	3,257,887.36	40.326316	-104.575036	
4,459.0	14.42	233.73	4,341.9	-584.6	-771.3	1,363,047.76	3,257,867.97	40.326275	-104.575106	
4,555.0	14.43	233.51	4,434.8	-598.7	-790.5	1,363,033.38	3,257,848.86	40.326237	-104.575175	
4,651.0	14.68	232.83	4,527.8	-613.2	-809.8	1,363,018.72	3,257,829.71	40.326197	-104.575245	
4,748.0	14.33	232.61	4,621.7	-627.9	-829.2	1,363,003.80	3,257,810.53	40.326156	-104.575314	
4,847.0	14.49	233.14	4,717.6	-642.8	-848.8	1,362,988.73	3,257,791.05	40.326116	-104.575385	
5,038.0	14.24	233.25	4,902.6	-671.2	-886.8	1,362,959.94	3,257,753.40	40.326038	-104.575521	
5,135.0	12.95	231.47	4,996.9	-685.1	-904.8	1,362,945.85	3,257,735.49	40.325999	-104.575585	
5,231.0	14.15	234.36	5,090.2	-698.6	-922.8	1,362,932.12	3,257,717.68	40.325962	-104.575650	
5,330.0	13.86	234.25	5,186.2	-712.6	-942.2	1,362,917.94	3,257,698.37	40.325924	-104.575720	
5,428.0	13.89	232.43	5,281.4	-726.6	-961.1	1,362,903.71	3,257,679.67	40.325885	-104.575787	
5,525.0	13.55	230.81	5,375.6	-740.9	-979.1	1,362,889.25	3,257,661.79	40.325846	-104.575852	
5,622.0	13.87	230.95	5,469.9	-755.4	-997.0	1,362,874.56	3,257,644.10	40.325806	-104.575916	
5,720.0	13.93	230.82	5,565.0	-770.3	-1,015.2	1,362,859.51	3,257,625.99	40.325766	-104.575981	
5,818.0	13.47	229.76	5,660.2	-785.1	-1,033.1	1,362,844.50	3,257,608.29	40.325725	-104.576045	
5,916.0	14.45	231.87	5,755.3	-800.0	-1,051.4	1,362,829.39	3,257,590.12	40.325684	-104.576111	
6,014.0	14.80	231.37	5,850.1	-815.4	-1,070.8	1,362,813.82	3,257,570.89	40.325642	-104.576181	
6,113.0	14.36	230.98	5,945.9	-831.0	-1,090.2	1,362,798.00	3,257,551.64	40.325599	-104.576250	
6,208.0	14.67	231.84	6,037.9	-845.9	-1,108.8	1,362,782.96	3,257,533.18	40.325558	-104.576317	
6,305.0	14.29	232.45	6,131.8	-860.7	-1,128.0	1,362,767.87	3,257,514.19	40.325517	-104.576386	
6,403.0	11.42	210.12	6,227.4	-876.5	-1,142.4	1,362,751.95	3,257,499.89	40.325474	-104.576438	

Ensign

Survey Report - Geographic

Company:	PDC Energy Inc. DJ Basin	Local Co-ordinate Reference:	Well HEN 14N
Project:	SEC.8-T4N-R64W	TVD Reference:	Well @ 4807.5ft (P272 - RKB 28.5')
Site:	Hen Pad	MD Reference:	Well @ 4807.5ft (P272 - RKB 28.5')
Well:	HEN 14N	North Reference:	True
Wellbore:	HEN 14N	Survey Calculation Method:	Minimum Curvature
Design:	HEN 14N Final Surveys	Database:	US_EDM

Survey									
Measured Depth (ft)	Inclination (°)	Azimuth (°)	Vertical Depth (ft)	+N/-S (ft)	+E/-W (ft)	Map Northing (usft)	Map Easting (usft)	Latitude	Longitude
6,500.0	8.52	168.58	6,323.1	-891.9	-1,145.8	1,362,736.54	3,257,496.65	40.325432	-104.576450
6,597.0	12.78	132.80	6,418.5	-906.2	-1,136.5	1,362,722.29	3,257,506.11	40.325392	-104.576416
6,693.0	20.43	119.78	6,510.4	-921.8	-1,114.2	1,362,706.96	3,257,528.64	40.325350	-104.576336
6,790.0	29.98	112.48	6,598.1	-939.5	-1,077.0	1,362,689.63	3,257,566.00	40.325301	-104.576203
6,886.0	38.10	104.03	6,677.6	-955.9	-1,026.0	1,362,673.78	3,257,617.18	40.325256	-104.576020
6,984.0	42.55	98.53	6,752.4	-968.2	-963.8	1,362,662.17	3,257,679.46	40.325222	-104.575797
7,080.0	49.40	96.10	6,819.0	-976.9	-895.4	1,362,654.19	3,257,747.97	40.325199	-104.575552
7,178.0	58.37	92.06	6,876.8	-982.3	-816.5	1,362,649.55	3,257,826.89	40.325184	-104.575269
7,275.0	67.53	89.64	6,920.8	-983.5	-730.2	1,362,649.25	3,257,913.17	40.325180	-104.574959
7,371.0	76.91	89.13	6,950.1	-982.5	-638.9	1,362,651.19	3,258,004.46	40.325183	-104.574632
7,467.0	85.11	87.99	6,965.1	-980.2	-544.2	1,362,654.57	3,258,099.13	40.325190	-104.574292
7,565.0	88.94	88.49	6,970.2	-977.1	-446.4	1,362,658.60	3,258,196.89	40.325198	-104.573941
7,664.0	90.62	88.47	6,970.6	-974.5	-347.5	1,362,662.26	3,258,295.82	40.325205	-104.573586
LPL - 2024' FSL & 2380' FEL									
7,759.0	90.57	87.81	6,969.6	-971.4	-252.5	1,362,666.34	3,258,390.72	40.325214	-104.573246
7,857.0	90.69	86.30	6,968.5	-966.4	-154.7	1,362,672.40	3,258,488.52	40.325227	-104.572895
7,955.0	90.64	85.79	6,967.4	-959.6	-56.9	1,362,680.18	3,258,586.20	40.325246	-104.572544
8,053.0	90.34	87.60	6,966.5	-954.0	40.9	1,362,686.85	3,258,683.96	40.325261	-104.572193
8,151.0	91.08	90.71	6,965.3	-952.6	138.9	1,362,689.32	3,258,781.90	40.325265	-104.571842
8,248.0	91.51	90.71	6,963.1	-953.8	235.9	1,362,689.13	3,258,878.87	40.325262	-104.571494
8,346.0	91.39	90.13	6,960.6	-954.5	333.8	1,362,689.44	3,258,976.84	40.325260	-104.571143
8,441.0	91.02	90.98	6,958.6	-955.4	428.8	1,362,689.51	3,259,071.81	40.325258	-104.570802
8,537.0	91.65	91.21	6,956.4	-957.2	524.8	1,362,688.68	3,259,167.78	40.325253	-104.570458
8,634.0	93.27	90.39	6,952.2	-958.6	621.7	1,362,688.34	3,259,264.68	40.325249	-104.570111
8,732.0	93.17	90.43	6,946.7	-959.3	719.5	1,362,688.67	3,259,362.52	40.325247	-104.569760
8,830.0	93.07	90.40	6,941.4	-960.0	817.4	1,362,688.98	3,259,460.37	40.325245	-104.569409
8,927.0	93.23	90.91	6,936.1	-961.1	914.2	1,362,688.89	3,259,557.22	40.325242	-104.569062
9,123.0	93.30	89.78	6,924.9	-962.3	1,109.9	1,362,689.76	3,259,752.89	40.325239	-104.568360
9,219.0	93.57	89.63	6,919.2	-961.8	1,205.7	1,362,691.25	3,259,848.70	40.325240	-104.568016
9,318.0	93.67	90.01	6,912.9	-961.5	1,304.5	1,362,692.60	3,259,947.49	40.325241	-104.567662
9,414.0	93.37	89.82	6,907.0	-961.3	1,400.3	1,362,693.74	3,260,043.29	40.325241	-104.567318
9,512.0	93.46	89.65	6,901.2	-960.9	1,498.1	1,362,695.22	3,260,141.10	40.325242	-104.566967
9,608.0	93.24	89.75	6,895.6	-960.4	1,594.0	1,362,696.72	3,260,236.92	40.325244	-104.566624
9,703.0	92.95	89.68	6,890.4	-959.9	1,688.8	1,362,698.18	3,260,331.77	40.325245	-104.566283
9,800.0	93.41	90.04	6,885.1	-959.7	1,785.7	1,362,699.43	3,260,428.61	40.325246	-104.565936
9,897.0	93.24	89.83	6,879.4	-959.6	1,882.5	1,362,700.56	3,260,525.43	40.325246	-104.565589
9,995.0	93.24	89.62	6,873.9	-959.1	1,980.4	1,362,702.05	3,260,623.26	40.325247	-104.565238
10,092.0	92.62	89.59	6,868.9	-958.4	2,077.2	1,362,703.73	3,260,720.11	40.325249	-104.564890
10,285.0	91.21	89.99	6,862.5	-957.7	2,270.1	1,362,706.46	3,260,912.97	40.325251	-104.564199
10,383.0	91.24	89.87	6,860.4	-957.6	2,368.1	1,362,707.60	3,261,010.94	40.325251	-104.563847
10,480.0	91.34	89.91	6,858.2	-957.4	2,465.1	1,362,708.80	3,261,107.90	40.325252	-104.563499
10,578.0	90.38	89.69	6,856.7	-957.1	2,563.1	1,362,710.17	3,261,205.88	40.325253	-104.563148
10,674.0	90.18	90.21	6,856.3	-957.0	2,659.1	1,362,711.26	3,261,301.87	40.325253	-104.562804
10,772.0	89.87	90.17	6,856.2	-957.3	2,757.1	1,362,711.96	3,261,399.86	40.325252	-104.562452
10,870.0	90.31	90.21	6,856.1	-957.6	2,855.1	1,362,712.66	3,261,497.85	40.325251	-104.562101
10,966.0	90.21	89.94	6,855.6	-957.8	2,951.1	1,362,713.53	3,261,593.84	40.325251	-104.561757
11,063.0	90.30	90.30	6,855.2	-958.0	3,048.1	1,362,714.35	3,261,690.83	40.325250	-104.561409
11,160.0	90.79	90.33	6,854.3	-958.5	3,145.1	1,362,714.83	3,261,787.82	40.325249	-104.561061
11,256.0	90.67	90.10	6,853.1	-958.9	3,241.0	1,362,715.47	3,261,883.81	40.325247	-104.560717
11,353.0	91.49	90.25	6,851.2	-959.1	3,338.0	1,362,716.19	3,261,980.78	40.325247	-104.560369
11,450.0	91.36	89.53	6,848.8	-959.0	3,435.0	1,362,717.39	3,262,077.74	40.325247	-104.560021
11,547.0	91.27	90.07	6,846.6	-958.6	3,532.0	1,362,718.74	3,262,174.70	40.325248	-104.559673
11,644.0	90.90	90.09	6,844.8	-958.8	3,629.0	1,362,719.62	3,262,271.68	40.325248	-104.559325
11,741.0	91.55	90.23	6,842.7	-959.0	3,725.9	1,362,720.37	3,262,368.65	40.325247	-104.558978
11,840.0	91.29	90.12	6,840.2	-959.3	3,824.9	1,362,721.10	3,262,467.61	40.325246	-104.558623

Ensign

Survey Report - Geographic

Company:	PDC Energy Inc. DJ Basin	Local Co-ordinate Reference:	Well HEN 14N
Project:	SEC.8-T4N-R64W	TVD Reference:	Well @ 4807.5ft (P272 - RKB 28.5')
Site:	Hen Pad	MD Reference:	Well @ 4807.5ft (P272 - RKB 28.5')
Well:	HEN 14N	North Reference:	True
Wellbore:	HEN 14N	Survey Calculation Method:	Minimum Curvature
Design:	HEN 14N Final Surveys	Database:	US_EDM

Survey

Measured Depth (ft)	Inclination (°)	Azimuth (°)	Vertical Depth (ft)	+N/-S (ft)	+E/-W (ft)	Map Northing (usft)	Map Easting (usft)	Latitude	Longitude
11,937.0	91.43	90.25	6,837.9	-959.6	3,921.9	1,362,721.80	3,262,564.57	40.325245	-104.558275
12,034.0	91.33	90.24	6,835.6	-960.1	4,018.8	1,362,722.40	3,262,661.54	40.325244	-104.557927
12,133.0	91.56	89.59	6,833.1	-959.9	4,117.8	1,362,723.58	3,262,760.50	40.325244	-104.557572
12,231.0	91.34	90.13	6,830.6	-959.7	4,215.8	1,362,724.85	3,262,858.45	40.325245	-104.557221
12,328.0	91.24	90.15	6,828.4	-959.9	4,312.8	1,362,725.62	3,262,955.42	40.325244	-104.556873
12,425.0	91.63	90.16	6,826.0	-960.2	4,409.7	1,362,726.38	3,263,052.38	40.325243	-104.556525
12,621.0	88.42	90.43	6,825.9	-961.2	4,605.7	1,362,727.42	3,263,248.35	40.325240	-104.555822
12,720.0	87.88	90.55	6,829.1	-962.0	4,704.6	1,362,727.61	3,263,347.29	40.325238	-104.555467
12,816.0	87.73	90.56	6,832.8	-963.0	4,800.6	1,362,727.68	3,263,443.21	40.325236	-104.555123
12,913.0	88.44	90.83	6,836.0	-964.1	4,897.5	1,362,727.52	3,263,540.15	40.325232	-104.554776
13,010.0	88.49	90.70	6,838.6	-965.4	4,994.5	1,362,727.24	3,263,637.12	40.325229	-104.554428
13,107.0	88.43	90.34	6,841.2	-966.3	5,091.4	1,362,727.37	3,263,734.08	40.325226	-104.554080
13,204.0	88.25	90.56	6,844.0	-967.1	5,188.4	1,362,727.63	3,263,831.03	40.325224	-104.553733
13,303.0	88.39	89.97	6,846.9	-967.5	5,287.3	1,362,728.20	3,263,929.98	40.325223	-104.553378
13,398.0	88.95	90.20	6,849.1	-967.7	5,382.3	1,362,729.06	3,264,024.95	40.325222	-104.553037
13,496.0	89.32	90.15	6,850.6	-968.0	5,480.3	1,362,729.78	3,264,122.93	40.325221	-104.552686
13,593.0	89.15	90.64	6,851.9	-968.6	5,577.3	1,362,730.13	3,264,219.91	40.325219	-104.552338
13,690.0	89.11	91.65	6,853.4	-970.6	5,674.2	1,362,729.20	3,264,316.89	40.325214	-104.551990
13,788.0	88.89	90.70	6,855.1	-972.6	5,772.2	1,362,728.22	3,264,414.87	40.325209	-104.551639
13,886.0	88.90	89.92	6,857.0	-973.1	5,870.2	1,362,728.71	3,264,512.84	40.325207	-104.551287
13,983.0	89.98	89.57	6,857.9	-972.7	5,967.2	1,362,730.16	3,264,609.82	40.325208	-104.550939
14,082.0	90.20	89.26	6,857.8	-971.7	6,066.2	1,362,732.21	3,264,708.80	40.325211	-104.550584
14,178.0	89.89	89.81	6,857.7	-970.9	6,162.2	1,362,733.99	3,264,804.78	40.325213	-104.550240
14,275.0	90.08	89.62	6,857.7	-970.4	6,259.2	1,362,735.49	3,264,901.76	40.325214	-104.549892
14,373.0	88.88	89.43	6,858.6	-969.6	6,357.2	1,362,737.32	3,264,999.73	40.325216	-104.549541
14,468.0	88.77	89.60	6,860.6	-968.8	6,452.1	1,362,739.12	3,265,094.69	40.325218	-104.549200
14,567.0	88.28	89.70	6,863.1	-968.2	6,551.1	1,362,740.76	3,265,193.64	40.325220	-104.548845
14,665.0	88.38	89.25	6,866.0	-967.3	6,649.1	1,362,742.68	3,265,291.57	40.325222	-104.548494
14,763.0	88.59	89.95	6,868.6	-966.6	6,747.0	1,362,744.39	3,265,389.52	40.325224	-104.548143
14,860.0	88.47	89.69	6,871.1	-966.3	6,844.0	1,362,745.71	3,265,486.48	40.325225	-104.547795
14,957.0	88.03	89.77	6,874.0	-965.8	6,940.9	1,362,747.18	3,265,583.41	40.325226	-104.547447
15,054.0	88.30	90.19	6,877.1	-965.8	7,037.9	1,362,748.23	3,265,680.35	40.325226	-104.547099
15,096.0	88.55	90.96	6,878.3	-966.2	7,079.9	1,362,748.25	3,265,722.34	40.325225	-104.546949
15,131.0	88.55	90.96	6,879.2	-966.8	7,114.9	1,362,748.03	3,265,757.32	40.325223	-104.546823

BHL - 2043' FSL & 206' FEL

Design Annotations

Measured Depth (ft)	Vertical Depth (ft)	Local Coordinates		Comment
		+N/-S (ft)	+E/-W (ft)	
7,664.0	6,970.6	-974.5	-347.5	LPL - 2024' FSL & 2380' FEL
15,131.0	6,879.2	-966.8	7,114.9	BHL - 2043' FSL & 206' FEL

Checked By: _____ Approved By: _____ Date: _____