

PDC Energy Inc. DJ Basin



HEN 13N
 Hen Pad
 North American Datum 1983 , US State Plane 1983, Colorado Northern Zone
 Ground Elevation: 4779.0
 +N/-S +E/-W Northing Easting Latitude Longitude
 0.0 0.0 1363654.89 3258632.90 40.327920 -104.572340
 P272 - RKB 28.5' Well @ 4807.5ft (P272 - RKB 28.5')

Hen Pad
 HEN 13N
 HEN 13N Final Surveys
 9:49, November 29 2023



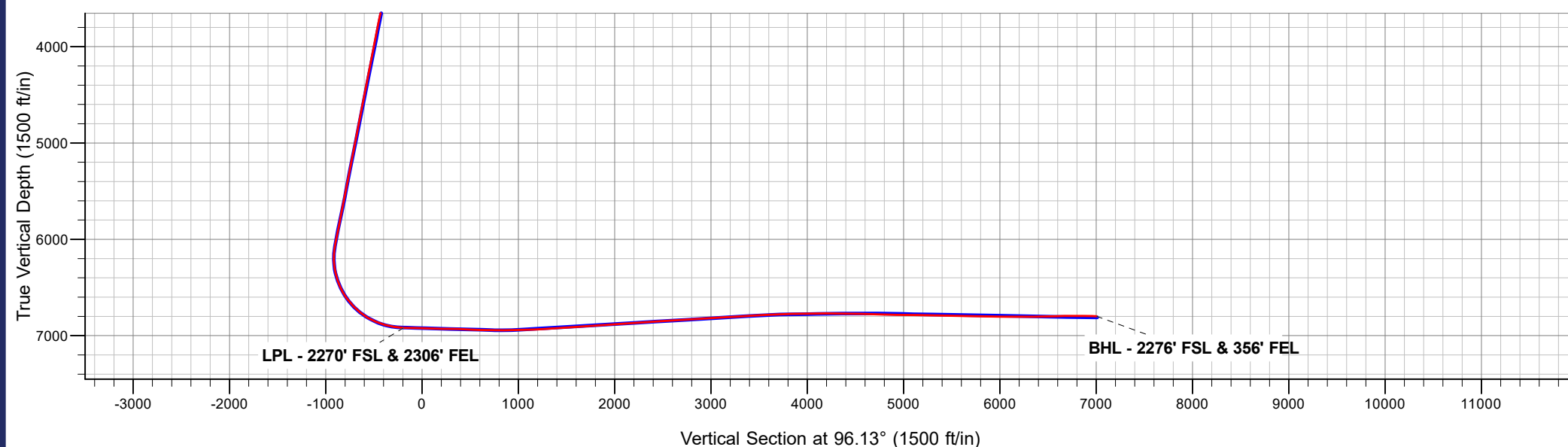
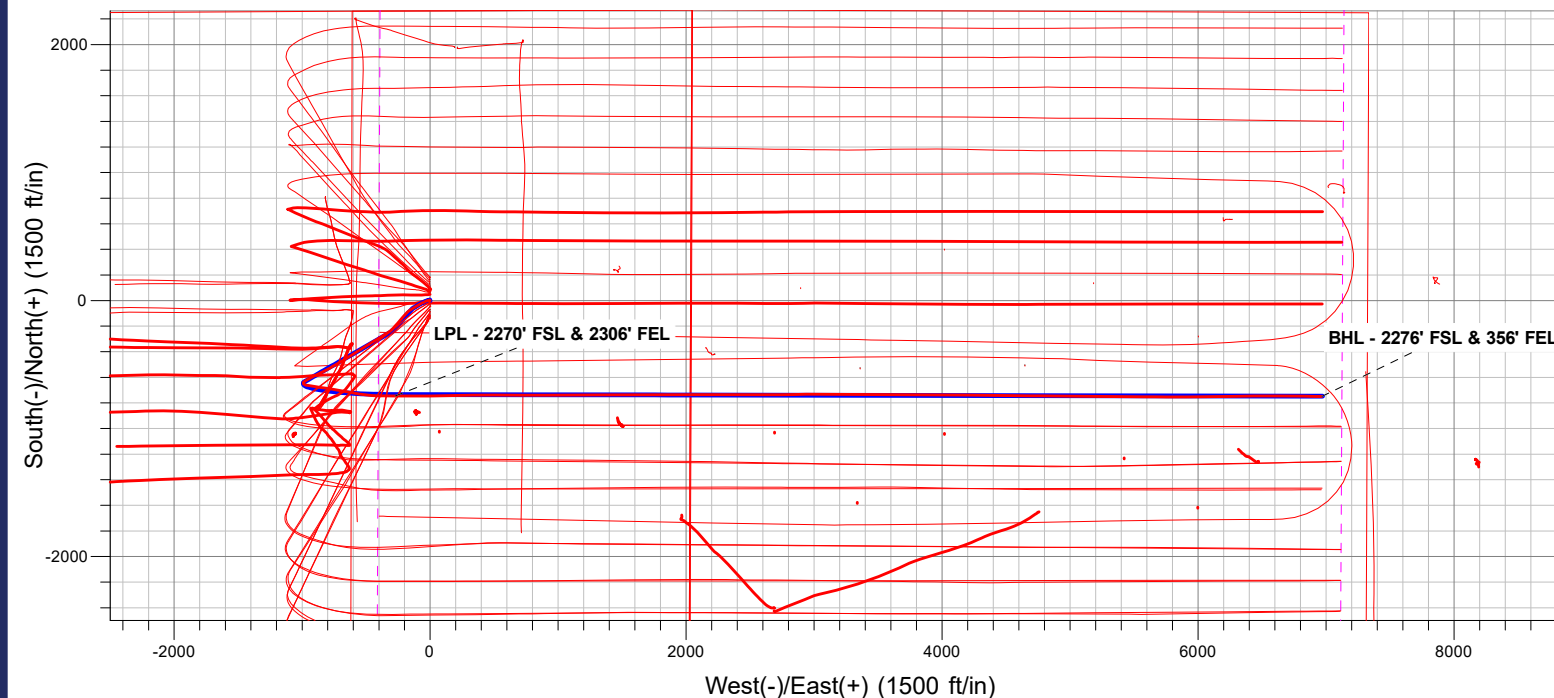
Azimuths to True North
 Magnetic North: 7.67°

Magnetic Field
 Strength: 51703.2nT
 Dip Angle: 66.58°
 Date: 09/05/2023
 Model: HRGM

ANNOTATIONS

MD	TVD	Annotation
7468.0	6918.2	LPL - 2270' FSL & 2306' FEL
14714.0	6798.4	BHL - 2276' FSL & 356' FEL

FINAL SURVEY
Projected Bottom Hole Location
14714' MD / 6798.4' TVD
88.56° INC / 90.64° AZM
2276' FSL / 356' FEL



PDC Energy Inc. DJ Basin

SEC.8-T4N-R64W

Hen Pad

HEN 13N

HEN 13N

Design: HEN 13N Final Surveys

Survey Report - Geographic

29 November, 2023

Ensign

Survey Report - Geographic

Company: PDC Energy Inc. DJ Basin	Local Co-ordinate Reference: Well HEN 13N
Project: SEC.8-T4N-R64W	TVD Reference: Well @ 4807.5ft (P272 - RKB 28.5')
Site: Hen Pad	MD Reference: Well @ 4807.5ft (P272 - RKB 28.5')
Well: HEN 13N	North Reference: True
Wellbore: HEN 13N	Survey Calculation Method: Minimum Curvature
Design: HEN 13N Final Surveys	Database: US_EDM

Project SEC.8-T4N-R64W, Weld County, Colorado			
Map System: US State Plane 1983	System Datum: Mean Sea Level		
Geo Datum: North American Datum 1983			
Map Zone: Colorado Northern Zone	Using geodetic scale factor		

Site Hen Pad			
Site Position:	Northing: 1,363,685.50 usft	Latitude: 40.328004	
From: Lat/Long	Easting: 3,258,631.47 usft	Longitude: -104.572344	
Position Uncertainty: 0.0 ft	Slot Radius: 13-3/16 "	Grid Convergence: 0.60 °	

Well HEN 13N			
Well Position	+N/-S 0.0 ft	Northing: 1,363,654.90 usft	Latitude: 40.327920
	+E/-W 0.0 ft	Easting: 3,258,632.90 usft	Longitude: -104.572340
Position Uncertainty 0.0 ft		Wellhead Elevation: ft	Ground Level: 4,779.0 ft

Wellbore HEN 13N					
Magnetics	Model Name	Sample Date	Declination (°)	Dip Angle (°)	Field Strength (nT)
	HRGM	09/05/2023	7.67	66.58	51,703.16627466

Design HEN 13N Final Surveys					
Audit Notes:					
Version: 1.0	Phase: ACTUAL	Tie On Depth: 0.0			
Vertical Section:	Depth From (TVD) (ft)	+N/-S (ft)	+E/-W (ft)	Direction (°)	
	0.0	0.0	0.0	96.13	

Survey Program Date 11/29/2023					
From (ft)	To (ft)	Survey (Wellbore)	Tool Name	Description	
159.5	14,714.0	Survey #1 (HEN 13N)	MWD	MWD - Standard	

Survey									
Measured Depth (ft)	Inclination (°)	Azimuth (°)	Vertical Depth (ft)	+N/-S (ft)	+E/-W (ft)	Map Northing (usft)	Map Easting (usft)	Latitude	Longitude
0.0	0.00	0.00	0.0	0.0	0.0	1,363,654.90	3,258,632.90	40.327920	-104.572340
159.5	0.97	300.15	159.5	0.7	-1.2	1,363,655.56	3,258,631.73	40.327922	-104.572344
249.5	1.23	308.79	249.5	1.7	-2.6	1,363,656.53	3,258,630.30	40.327925	-104.572350
340.5	0.62	306.87	340.5	2.6	-3.7	1,363,657.43	3,258,629.14	40.327927	-104.572354
456.5	0.70	266.87	456.5	2.9	-4.9	1,363,657.75	3,258,627.93	40.327928	-104.572358
545.5	0.70	261.00	545.4	2.8	-6.0	1,363,657.63	3,258,626.85	40.327928	-104.572362
629.5	0.70	256.07	629.4	2.6	-7.0	1,363,657.41	3,258,625.85	40.327927	-104.572365
715.5	0.88	257.30	715.4	2.3	-8.2	1,363,657.13	3,258,624.69	40.327926	-104.572370
801.5	1.32	259.76	801.4	2.0	-9.8	1,363,656.79	3,258,623.08	40.327926	-104.572375
888.5	1.67	261.52	888.4	1.6	-12.0	1,363,656.40	3,258,620.84	40.327925	-104.572383
977.5	1.85	262.75	977.3	1.3	-14.7	1,363,656.00	3,258,618.14	40.327924	-104.572393
1,066.5	2.55	249.22	1,066.3	0.4	-18.0	1,363,655.08	3,258,614.87	40.327921	-104.572405

Ensign

Survey Report - Geographic

Company:	PDC Energy Inc. DJ Basin	Local Co-ordinate Reference:	Well HEN 13N
Project:	SEC.8-T4N-R64W	TVD Reference:	Well @ 4807.5ft (P272 - RKB 28.5')
Site:	Hen Pad	MD Reference:	Well @ 4807.5ft (P272 - RKB 28.5')
Well:	HEN 13N	North Reference:	True
Wellbore:	HEN 13N	Survey Calculation Method:	Minimum Curvature
Design:	HEN 13N Final Surveys	Database:	US_EDM

Survey										
Measured Depth (ft)	Inclination (°)	Azimuth (°)	Vertical Depth (ft)	+N/-S (ft)	+E/-W (ft)	Map Northing (usft)	Map Easting (usft)	Latitude	Longitude	
1,151.5	4.48	247.64	1,151.1	-1.6	-22.9	1,363,653.10	3,258,610.06	40.327916	-104.572422	
1,237.5	5.80	248.34	1,236.8	-4.4	-30.0	1,363,650.14	3,258,602.94	40.327908	-104.572448	
1,322.5	7.39	245.70	1,321.2	-8.3	-39.0	1,363,646.22	3,258,594.01	40.327897	-104.572480	
1,407.5	9.32	245.70	1,405.3	-13.4	-50.2	1,363,641.02	3,258,582.81	40.327883	-104.572520	
1,495.5	11.52	245.17	1,491.8	-20.0	-64.7	1,363,634.24	3,258,568.41	40.327865	-104.572572	
1,582.5	12.31	239.73	1,577.0	-28.3	-80.6	1,363,625.75	3,258,552.60	40.327842	-104.572629	
1,644.5	12.13	240.25	1,637.6	-34.9	-92.0	1,363,619.07	3,258,541.31	40.327824	-104.572670	
1,828.0	12.24	236.82	1,816.9	-55.1	-125.0	1,363,598.52	3,258,508.50	40.327769	-104.572789	
1,925.0	13.23	240.46	1,911.5	-66.2	-143.3	1,363,587.23	3,258,490.36	40.327738	-104.572854	
2,023.0	13.61	232.67	2,006.9	-78.7	-162.2	1,363,574.51	3,258,471.56	40.327704	-104.572922	
2,120.0	13.75	228.36	2,101.1	-93.3	-179.9	1,363,559.74	3,258,454.03	40.327664	-104.572985	
2,217.0	13.99	219.44	2,195.3	-110.0	-195.9	1,363,542.86	3,258,438.14	40.327618	-104.573043	
2,315.0	13.90	221.23	2,290.4	-128.0	-211.2	1,363,524.70	3,258,423.04	40.327569	-104.573098	
2,409.0	13.29	218.65	2,381.8	-144.9	-225.4	1,363,507.62	3,258,409.03	40.327522	-104.573149	
2,506.0	13.74	222.56	2,476.1	-162.1	-240.2	1,363,490.28	3,258,394.46	40.327475	-104.573202	
2,603.0	13.77	220.94	2,570.3	-179.3	-255.5	1,363,472.91	3,258,379.28	40.327428	-104.573257	
2,700.0	14.47	221.92	2,664.4	-197.1	-271.2	1,363,455.01	3,258,363.81	40.327379	-104.573313	
2,797.0	14.72	223.12	2,758.3	-215.1	-287.7	1,363,436.83	3,258,347.48	40.327330	-104.573372	
2,894.0	14.03	229.86	2,852.2	-231.7	-305.1	1,363,420.07	3,258,330.24	40.327284	-104.573435	
2,991.0	14.15	237.16	2,946.3	-245.7	-324.1	1,363,405.87	3,258,311.44	40.327246	-104.573503	
3,088.0	14.07	236.29	3,040.4	-258.6	-343.8	1,363,392.69	3,258,291.81	40.327210	-104.573573	
3,185.0	13.77	236.80	3,134.5	-271.5	-363.3	1,363,379.62	3,258,272.47	40.327175	-104.573643	
3,283.0	13.48	239.07	3,229.8	-283.8	-382.9	1,363,367.16	3,258,253.05	40.327141	-104.573713	
3,379.0	13.66	239.87	3,323.1	-295.2	-402.3	1,363,355.52	3,258,233.77	40.327110	-104.573783	
3,477.0	13.87	239.29	3,418.3	-307.0	-422.4	1,363,343.50	3,258,213.78	40.327077	-104.573855	
3,575.0	13.98	238.96	3,513.4	-319.1	-442.6	1,363,331.19	3,258,193.67	40.327044	-104.573928	
3,672.0	14.30	235.74	3,607.5	-331.9	-462.6	1,363,318.19	3,258,173.87	40.327009	-104.573999	
3,768.0	14.06	238.65	3,700.6	-344.6	-482.3	1,363,305.25	3,258,154.24	40.326974	-104.574070	
3,865.0	14.16	238.76	3,794.6	-356.9	-502.5	1,363,292.75	3,258,134.17	40.326940	-104.574143	
3,962.0	13.83	237.69	3,888.7	-369.3	-522.5	1,363,280.20	3,258,114.36	40.326906	-104.574214	
4,058.0	13.92	238.54	3,981.9	-381.4	-542.0	1,363,267.83	3,258,094.94	40.326873	-104.574284	
4,155.0	13.83	238.13	4,076.1	-393.6	-561.8	1,363,255.42	3,258,075.27	40.326840	-104.574355	
4,252.0	13.57	237.59	4,170.4	-405.9	-581.3	1,363,242.99	3,258,055.95	40.326806	-104.574425	
4,350.0	13.72	236.78	4,265.6	-418.4	-600.7	1,363,230.26	3,258,036.65	40.326772	-104.574495	
4,447.0	13.54	238.30	4,359.9	-430.7	-620.0	1,363,217.79	3,258,017.50	40.326738	-104.574564	
4,544.0	14.20	238.97	4,454.0	-442.8	-639.8	1,363,205.49	3,257,997.77	40.326705	-104.574635	
4,642.0	14.08	237.62	4,549.1	-455.3	-660.2	1,363,192.69	3,257,977.54	40.326670	-104.574708	
4,739.0	13.89	238.92	4,643.2	-467.7	-680.1	1,363,180.16	3,257,957.73	40.326636	-104.574780	
4,837.0	13.58	239.14	4,738.4	-479.6	-700.1	1,363,167.98	3,257,937.91	40.326603	-104.574851	
4,936.0	13.73	241.02	4,834.6	-491.3	-720.3	1,363,156.11	3,257,917.78	40.326571	-104.574924	
5,033.0	13.53	241.21	4,928.9	-502.3	-740.3	1,363,144.86	3,257,897.88	40.326541	-104.574996	
5,131.0	13.25	239.49	5,024.2	-513.6	-760.1	1,363,133.43	3,257,878.28	40.326510	-104.575066	
5,228.0	13.38	239.82	5,118.6	-524.8	-779.4	1,363,121.95	3,257,859.12	40.326479	-104.575135	
5,326.0	13.54	243.88	5,213.9	-535.6	-799.5	1,363,110.99	3,257,839.13	40.326450	-104.575207	
5,425.0	13.38	241.45	5,310.2	-546.2	-819.9	1,363,100.20	3,257,818.77	40.326421	-104.575281	
5,522.0	12.69	244.63	5,404.7	-556.1	-839.4	1,363,090.06	3,257,799.39	40.326394	-104.575351	
5,618.0	13.18	243.74	5,498.2	-565.5	-858.8	1,363,080.50	3,257,780.15	40.326368	-104.575420	
5,715.0	13.34	241.65	5,592.7	-575.7	-878.5	1,363,070.09	3,257,760.49	40.326340	-104.575491	
5,812.0	12.63	242.47	5,687.2	-585.9	-897.8	1,363,059.67	3,257,741.35	40.326312	-104.575560	
5,911.0	13.34	241.68	5,783.6	-596.3	-917.4	1,363,049.05	3,257,721.81	40.326283	-104.575631	
6,007.0	13.64	243.05	5,877.0	-606.7	-937.3	1,363,038.46	3,257,702.08	40.326255	-104.575702	
6,105.0	13.19	243.24	5,972.3	-617.0	-957.5	1,363,027.98	3,257,681.91	40.326226	-104.575774	
6,200.0	13.10	239.72	6,064.8	-627.3	-976.5	1,363,017.47	3,257,663.04	40.326198	-104.575843	
6,298.0	8.13	209.39	6,161.2	-638.9	-989.5	1,363,005.68	3,257,650.15	40.326166	-104.575889	
6,395.0	9.51	144.16	6,257.3	-651.4	-988.2	1,362,993.20	3,257,651.61	40.326132	-104.575884	

Ensign

Survey Report - Geographic

Company:	PDC Energy Inc. DJ Basin	Local Co-ordinate Reference:	Well HEN 13N
Project:	SEC.8-T4N-R64W	TVD Reference:	Well @ 4807.5ft (P272 - RKB 28.5')
Site:	Hen Pad	MD Reference:	Well @ 4807.5ft (P272 - RKB 28.5')
Well:	HEN 13N	North Reference:	True
Wellbore:	HEN 13N	Survey Calculation Method:	Minimum Curvature
Design:	HEN 13N Final Surveys	Database:	US_EDM

Survey										
Measured Depth (ft)	Inclination (°)	Azimuth (°)	Vertical Depth (ft)	+N/-S (ft)	+E/-W (ft)	Map Northing (usft)	Map Easting (usft)	Latitude	Longitude	
6,493.0	13.16	99.07	6,353.5	-659.8	-972.4	1,362,985.02	3,257,667.49	40.326109	-104.575828	
6,591.0	19.25	99.44	6,447.6	-664.2	-945.4	1,362,980.89	3,257,694.51	40.326097	-104.575731	
6,688.0	28.77	100.88	6,536.1	-671.2	-906.6	1,362,974.25	3,257,733.37	40.326078	-104.575592	
6,786.0	36.26	98.67	6,618.7	-680.1	-854.8	1,362,965.96	3,257,785.34	40.326053	-104.575406	
6,884.0	43.80	97.25	6,693.7	-688.7	-792.4	1,362,957.96	3,257,847.81	40.326030	-104.575182	
6,981.0	51.07	99.26	6,759.2	-699.0	-721.7	1,362,948.37	3,257,918.55	40.326001	-104.574929	
7,078.0	59.63	101.37	6,814.3	-713.4	-643.3	1,362,934.85	3,257,997.10	40.325962	-104.574648	
7,174.0	68.14	99.75	6,856.5	-729.1	-558.7	1,362,920.00	3,258,081.92	40.325919	-104.574344	
7,272.0	74.09	94.75	6,888.3	-740.7	-466.7	1,362,909.34	3,258,173.95	40.325887	-104.574014	
7,370.0	80.91	90.06	6,909.5	-744.7	-371.2	1,362,906.38	3,258,269.49	40.325876	-104.573672	
7,468.0	88.92	90.41	6,918.2	-745.1	-273.7	1,362,907.00	3,258,367.02	40.325875	-104.573322	
LPL - 2270' FSL & 2306' FEL										
7,565.0	88.37	90.70	6,920.5	-746.0	-176.7	1,362,907.07	3,258,463.99	40.325872	-104.572974	
7,662.0	88.85	89.17	6,922.8	-745.9	-79.8	1,362,908.20	3,258,560.95	40.325872	-104.572626	
7,760.0	88.48	89.56	6,925.1	-744.9	18.2	1,362,910.31	3,258,658.89	40.325875	-104.572275	
7,857.0	88.49	89.14	6,927.7	-743.8	115.2	1,362,912.42	3,258,755.83	40.325878	-104.571927	
7,954.0	89.03	88.73	6,929.8	-741.9	212.1	1,362,915.24	3,258,852.76	40.325883	-104.571579	
8,052.0	87.95	89.06	6,932.3	-740.1	310.1	1,362,918.15	3,258,950.68	40.325889	-104.571228	
8,151.0	87.91	89.26	6,935.9	-738.6	409.0	1,362,920.64	3,259,049.58	40.325893	-104.570873	
8,247.0	87.70	90.38	6,939.6	-738.3	504.9	1,362,921.94	3,259,145.50	40.325893	-104.570529	
8,443.0	89.79	90.38	6,943.9	-739.6	700.9	1,362,922.69	3,259,341.43	40.325890	-104.569827	
8,539.0	92.08	89.81	6,942.3	-739.8	796.8	1,362,923.54	3,259,437.40	40.325889	-104.569482	
8,638.0	90.34	89.84	6,940.2	-739.5	895.8	1,362,924.87	3,259,536.36	40.325890	-104.569127	
8,735.0	90.35	89.70	6,939.6	-739.1	992.8	1,362,926.28	3,259,633.34	40.325891	-104.568780	
8,833.0	92.75	89.97	6,937.0	-738.8	1,090.8	1,362,927.58	3,259,731.29	40.325892	-104.568428	
8,930.0	93.42	89.67	6,931.8	-738.5	1,187.6	1,362,928.90	3,259,828.13	40.325893	-104.568081	
9,028.0	93.17	89.60	6,926.1	-737.9	1,285.5	1,362,930.55	3,259,925.95	40.325895	-104.567730	
9,126.0	93.84	89.47	6,920.1	-737.1	1,383.3	1,362,932.37	3,260,023.75	40.325897	-104.567379	
9,225.0	94.01	89.44	6,913.4	-736.1	1,482.0	1,362,934.34	3,260,122.49	40.325899	-104.567025	
9,323.0	94.08	90.10	6,906.5	-735.7	1,579.8	1,362,935.75	3,260,220.23	40.325900	-104.566674	
9,421.0	94.21	89.83	6,899.4	-735.7	1,677.5	1,362,936.84	3,260,317.97	40.325900	-104.566324	
9,520.0	94.35	89.73	6,892.0	-735.3	1,776.3	1,362,938.25	3,260,416.68	40.325902	-104.565970	
9,616.0	94.31	89.83	6,884.7	-734.9	1,872.0	1,362,939.62	3,260,512.39	40.325903	-104.565626	
9,714.0	93.49	90.07	6,878.1	-734.8	1,969.8	1,362,940.72	3,260,610.15	40.325903	-104.565276	
9,811.0	93.39	89.99	6,872.3	-734.9	2,066.6	1,362,941.69	3,260,706.96	40.325903	-104.564929	
9,907.0	93.41	90.03	6,866.6	-734.9	2,162.4	1,362,942.67	3,260,802.79	40.325902	-104.564585	
10,004.0	93.84	89.98	6,860.4	-734.9	2,259.2	1,362,943.68	3,260,899.58	40.325902	-104.564238	
10,103.0	93.50	90.07	6,854.1	-735.0	2,358.0	1,362,944.67	3,260,998.37	40.325902	-104.563883	
10,200.0	93.55	90.02	6,848.1	-735.0	2,454.8	1,362,945.60	3,261,095.18	40.325902	-104.563536	
10,296.0	93.82	89.86	6,842.0	-734.9	2,550.6	1,362,946.71	3,261,190.97	40.325902	-104.563193	
10,394.0	93.39	90.16	6,835.8	-735.0	2,648.4	1,362,947.71	3,261,288.77	40.325902	-104.562842	
10,491.0	93.41	90.01	6,830.0	-735.1	2,745.3	1,362,948.58	3,261,385.59	40.325902	-104.562494	
10,588.0	93.76	88.24	6,824.0	-733.6	2,842.1	1,362,951.07	3,261,482.36	40.325906	-104.562147	
10,687.0	93.75	89.94	6,817.5	-732.1	2,940.8	1,362,953.67	3,261,581.10	40.325910	-104.561793	
10,784.0	93.24	90.35	6,811.6	-732.3	3,037.7	1,362,954.44	3,261,677.91	40.325909	-104.561446	
10,882.0	92.93	90.42	6,806.3	-733.0	3,135.5	1,362,954.81	3,261,775.77	40.325908	-104.561095	
10,978.0	93.74	89.96	6,800.7	-733.3	3,231.3	1,362,955.49	3,261,871.60	40.325907	-104.560751	
11,076.0	93.73	90.07	6,794.3	-733.3	3,329.1	1,362,956.49	3,261,969.38	40.325907	-104.560400	
11,172.0	93.56	89.93	6,788.2	-733.3	3,424.9	1,362,957.49	3,262,065.17	40.325907	-104.560057	
11,268.0	92.86	90.31	6,782.9	-733.5	3,520.8	1,362,958.29	3,262,161.02	40.325906	-104.559713	
11,365.0	91.93	90.25	6,778.8	-734.0	3,617.7	1,362,958.83	3,262,257.92	40.325905	-104.559366	
11,464.0	91.04	90.71	6,776.2	-734.8	3,716.7	1,362,959.04	3,262,356.88	40.325902	-104.559011	
11,561.0	90.69	90.37	6,774.8	-735.7	3,813.6	1,362,959.14	3,262,453.87	40.325900	-104.558663	
11,658.0	90.86	90.42	6,773.5	-736.4	3,910.6	1,362,959.49	3,262,550.85	40.325898	-104.558315	
11,756.0	91.03	90.35	6,771.8	-737.0	4,008.6	1,362,959.85	3,262,648.84	40.325896	-104.557964	

Ensign

Survey Report - Geographic

Company:	PDC Energy Inc. DJ Basin	Local Co-ordinate Reference:	Well HEN 13N
Project:	SEC.8-T4N-R64W	TVD Reference:	Well @ 4807.5ft (P272 - RKB 28.5')
Site:	Hen Pad	MD Reference:	Well @ 4807.5ft (P272 - RKB 28.5')
Well:	HEN 13N	North Reference:	True
Wellbore:	HEN 13N	Survey Calculation Method:	Minimum Curvature
Design:	HEN 13N Final Surveys	Database:	US_EDM

Survey									
Measured Depth (ft)	Inclination (°)	Azimuth (°)	Vertical Depth (ft)	+N/-S (ft)	+E/-W (ft)	Map Northing (usft)	Map Easting (usft)	Latitude	Longitude
11,852.0	90.79	90.47	6,770.3	-737.7	4,104.6	1,362,960.17	3,262,744.82	40.325894	-104.557619
11,949.0	91.02	90.41	6,768.8	-738.5	4,201.6	1,362,960.44	3,262,841.80	40.325892	-104.557271
12,046.0	88.42	90.95	6,769.3	-739.6	4,298.6	1,362,960.30	3,262,938.79	40.325889	-104.556924
12,144.0	88.85	90.24	6,771.6	-740.6	4,396.5	1,362,960.31	3,263,036.76	40.325886	-104.556572
12,240.0	88.09	90.47	6,774.2	-741.2	4,492.5	1,362,960.72	3,263,132.72	40.325884	-104.556228
12,336.0	88.29	90.92	6,777.2	-742.4	4,588.4	1,362,960.56	3,263,228.66	40.325881	-104.555884
12,433.0	89.06	90.55	6,779.4	-743.7	4,685.4	1,362,960.33	3,263,325.63	40.325878	-104.555536
12,529.0	88.96	90.43	6,781.1	-744.5	4,781.4	1,362,960.51	3,263,421.61	40.325875	-104.555192
12,627.0	88.91	90.43	6,782.9	-745.2	4,879.4	1,362,960.80	3,263,519.59	40.325873	-104.554841
12,725.0	88.96	90.70	6,784.7	-746.2	4,977.4	1,362,960.86	3,263,617.57	40.325870	-104.554489
12,822.0	89.12	90.46	6,786.4	-747.2	5,074.3	1,362,960.90	3,263,714.55	40.325868	-104.554141
12,919.0	89.19	90.56	6,787.8	-748.0	5,171.3	1,362,961.05	3,263,811.54	40.325865	-104.553794
13,018.0	89.03	90.66	6,789.3	-749.1	5,270.3	1,362,961.03	3,263,910.52	40.325862	-104.553439
13,116.0	88.65	90.54	6,791.3	-750.1	5,368.3	1,362,961.03	3,264,008.50	40.325859	-104.553087
13,214.0	89.15	90.51	6,793.2	-751.0	5,466.3	1,362,961.15	3,264,106.47	40.325857	-104.552736
13,312.0	88.95	90.49	6,794.8	-751.9	5,564.2	1,362,961.32	3,264,204.45	40.325855	-104.552384
13,410.0	88.85	90.24	6,796.7	-752.5	5,662.2	1,362,961.73	3,264,302.43	40.325853	-104.552033
13,506.0	88.76	90.75	6,798.7	-753.3	5,758.2	1,362,961.90	3,264,398.41	40.325850	-104.551689
13,603.0	88.79	89.31	6,800.8	-753.4	5,855.2	1,362,962.86	3,264,495.37	40.325850	-104.551341
13,701.0	89.00	89.65	6,802.7	-752.5	5,953.1	1,362,964.78	3,264,593.33	40.325853	-104.550990
13,798.0	89.24	89.26	6,804.2	-751.5	6,050.1	1,362,966.71	3,264,690.30	40.325855	-104.550642
13,895.0	90.53	89.19	6,804.4	-750.2	6,147.1	1,362,969.04	3,264,787.26	40.325859	-104.550294
13,991.0	90.39	89.17	6,803.6	-748.9	6,243.1	1,362,971.42	3,264,883.22	40.325862	-104.549950
14,088.0	91.33	89.06	6,802.1	-747.4	6,340.1	1,362,973.93	3,264,980.18	40.325866	-104.549602
14,184.0	91.13	89.28	6,800.1	-746.0	6,436.1	1,362,976.33	3,265,076.12	40.325870	-104.549258
14,378.0	91.78	90.16	6,795.1	-745.0	6,630.0	1,362,979.30	3,265,270.02	40.325873	-104.548862
14,573.0	88.44	90.87	6,794.8	-746.8	6,824.9	1,362,979.59	3,265,464.98	40.325868	-104.547863
14,668.0	88.59	90.64	6,797.2	-748.0	6,919.9	1,362,979.33	3,265,559.95	40.325864	-104.547522
14,714.0	88.59	90.64	6,798.4	-748.5	6,965.9	1,362,979.30	3,265,605.93	40.325863	-104.547357
BHL - 2276' FSL & 356' FEL									

Design Annotations				
Measured Depth (ft)	Vertical Depth (ft)	Local Coordinates		Comment
		+N/-S (ft)	+E/-W (ft)	
7,468.0	6,918.2	-745.1	-273.7	LPL - 2270' FSL & 2306' FEL
14,714.0	6,798.4	-748.5	6,965.9	BHL - 2276' FSL & 356' FEL

Checked By: _____ Approved By: _____ Date: _____