

T4S, R96W, 6th P.M.

Caerus Oil & Gas LLC

AS-DRILLED BJU M33 FED 24A-32 496
SW 1/4 SW 1/4, SECTION 33, T4S, R96W, 6th P.M.
GARFIELD COUNTY, COLORADO

BASIS OF BEARINGS

BEARINGS ARE BASED ON THE ASSUMPTION THAT THE WEST LINE OF THE NORTHWEST 1/4 OF SECTION 33 BEARS N00°00'45"W BETWEEN MONUMENTS DESCRIBED HEREON.

BASIS OF ELEVATION

OPUS SOLUTION GENERATED NAVD 88

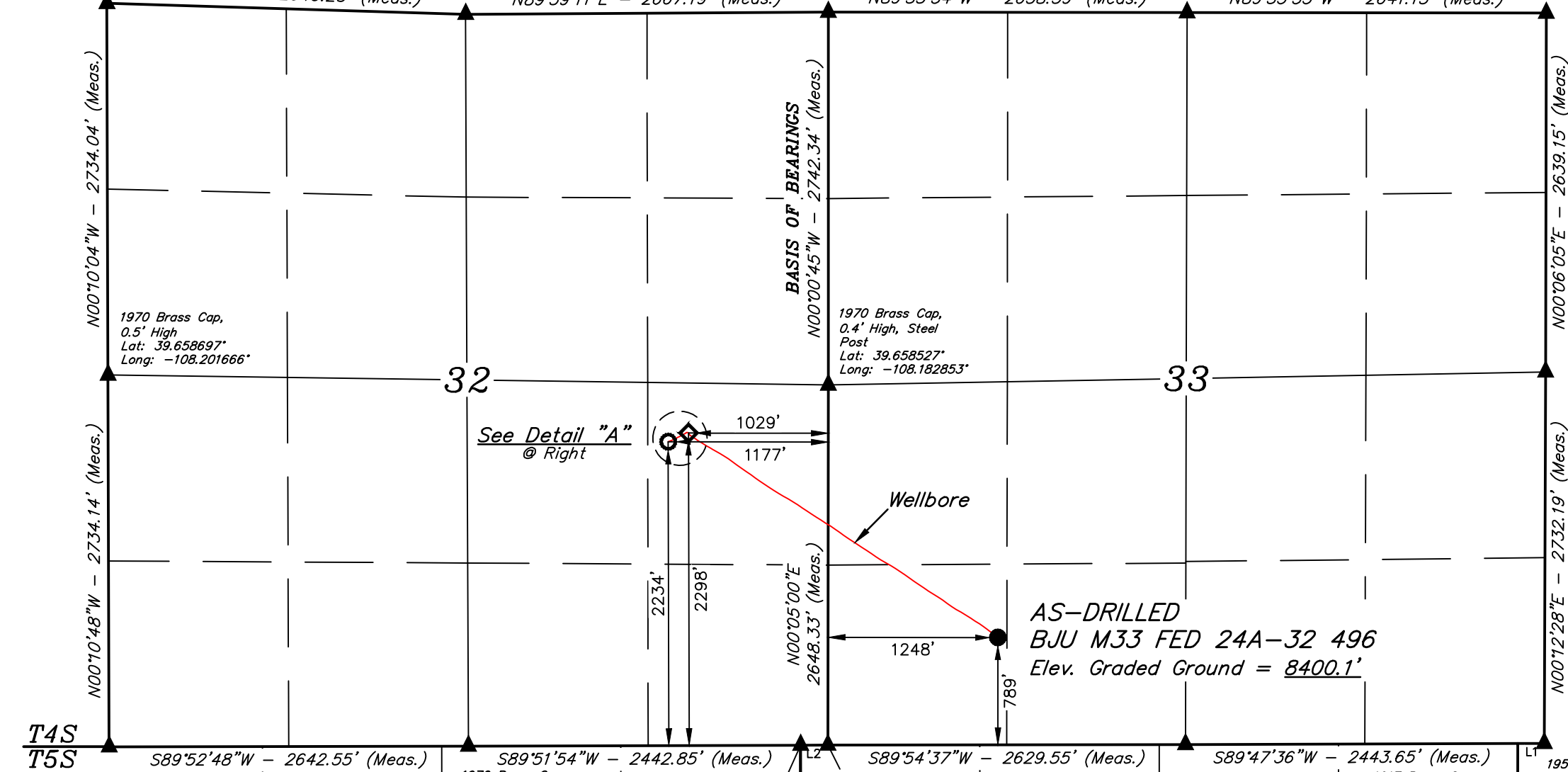
1967 Brass Cap, 0.4' High, Mound of Stones
Lat: 39.666199°
Long: -108.201716°

1970 Brass Cap, Flush W/Ground, Mound of Stones
Lat: 39.665933°
Long: -108.192345°

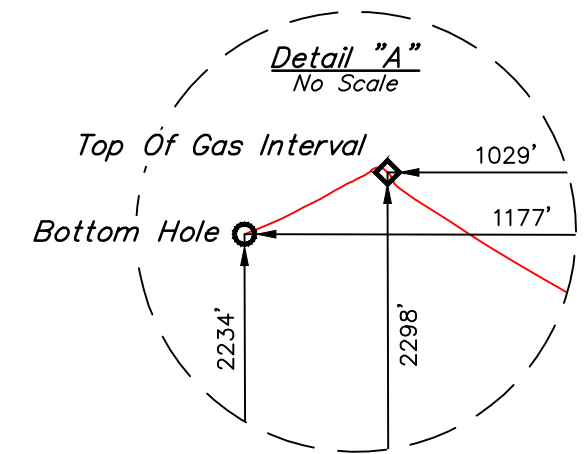
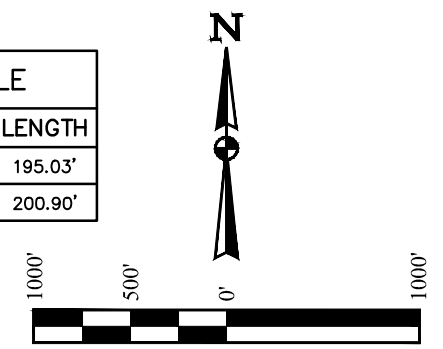
1970 Brass Cap, 0.2' High, Mound of Stones
Lat: 39.666052°
Long: -108.182875°

1970 Brass Cap, 0.7' High, Mound of Stones
Lat: 39.666057°
Long: -108.173507°

1953 Brass Cap, 0.9' High, Steel Post
Lat: 39.666061°
Long: -108.164129°



LINE TABLE		
LINE	DIRECTION	LENGTH
L1	N89°52'58"W	195.03'
L2	S89°40'26"W	200.90'



1970 Brass Cap, 0.5' High
Lat: 39.658697°
Long: -108.201666°

1970 Brass Cap, 0.4' High, Steel Post
Lat: 39.658527°
Long: -108.182853°

1953 Brass Cap, 0.9' High, Steel Post
Lat: 39.658819°
Long: -108.164128°

1970 Brass Cap, 0.2' High, Mound of Stones
Lat: 39.651194°
Long: -108.201613°

1970 Brass Cap, 0.2' High
Lat: 39.651225°
Long: -108.192233°

1917 Brass Cap, 0.2' High, Fence
Lat: 39.651255°
Long: -108.183561°

1970 Brass Cap, 0.2' High, Steel Post
Lat: 39.651259°
Long: -108.182848°

1970 Brass Cap, 0.3' High, E-W-N Fence
Lat: 39.651285°
Long: -108.173513°

1917 Brass Cap, 0.5' High, Mound of Stones, E-W Fence
Lat: 39.651322°
Long: -108.164839°

1953 Brass Cap, 0.2' High, E-W Fence, Mound of Stones
Lat: 39.651322°
Long: -108.164146°

CERTIFICATE OF SURVEY

THIS IS TO CERTIFY THAT THE ABOVE PLAT WAS PREPARED AND THE LOCATION AS SHOWN WAS STAKED ON THE GROUND FROM FIELD NOTES OF ACTUAL SURVEYS MADE BY ME OR UNDER MY SUPERVISION AND THAT THE SAME ARE TRUE AND CORRECT TO THE BEST OF MY KNOWLEDGE AND BELIEF.

REGISTERED LAND SURVEYOR
REGISTRATION NO. 12894-23
STATE OF COLORADO

NOTE:
Distances referenced on plat to section lines are perpendicular.

LEGEND:
● = AS-DRILLED WELLHEAD.
◇ = TOP OF GAS INTERVAL.
○ = BOTTOM HOLE.
▲ = SECTION CORNERS LOCATED. (NAD 83)

NAD 83 (AS-DRILLED WELLHEAD)	NAD 83 (TOP OF GAS INTERVAL)	NAD 83 (BOTTOM HOLE)
LATITUDE = 39°39'12.37" (39.653437°)	LATITUDE = 39°39'27.18" (39.657551°)	LATITUDE = 39°39'26.54" (39.657373°)
LONGITUDE = -108°10'42.30" (-108.178418°)	LONGITUDE = -108°11'11.42" (-108.186505°)	LONGITUDE = -108°11'13.32" (-108.187033°)
NAD 27 (AS-DRILLED WELLHEAD)	NAD 27 (TOP OF GAS INTERVAL)	NAD 27 (BOTTOM HOLE)
LATITUDE = 39°39'12.46" (39.653461°)	LATITUDE = 39°39'27.27" (39.657576°)	LATITUDE = 39°39'26.63" (39.657398°)
LONGITUDE = -108°10'40.01" (-108.177781°)	LONGITUDE = -108°11'09.12" (-108.185867°)	LONGITUDE = -108°11'11.02" (-108.186395°)
UTM, NAD 27 (ZONE 12)	UTM, NAD 27 (ZONE 12)	UTM, NAD 27 (ZONE 12)
N: 14412352.81' E: 2434843.69'	N: 14413779.79' E: 2432520.04'	N: 14413710.35' E: 2432373.42'

PDOP = 1.9

UINTEAH ENGINEERING & LAND SURVEYING

UELS, LLC
Corporate Office * 85 South 200 East
Vernal, UT 84078 * (435) 789-1017

SURVEYED BY	CLINT SORENSON, D.H.	08-23-23	SCALE
DRAWN BY	T.L.L.	12-04-23	1" = 1000'

AS-DRILLED WELL LOCATION PLAT