



# Caerus Operating LLC

## LONG STRING POST JOB REPORT

BJU M33 FED #24A-32-496 05-045-24326  
S:33 T:4S R:96W Garfield CO

CallSheet #: 88685  
Proposal #: 71600



**LONG STRING Post Job Report**

**Attention:** Mr. Cole Walton | (720) 880-6325 | cwalton@caerusoilandgas.com

Caerus Operating LLC

1001 17TH STREET | DENVER, CO 80202

---

Dear Mr. Cole Walton,

Thank you for the opportunity to provide cementing services on this well. American Cementing strives to achieve complete customer satisfaction. If you have any questions regarding the services or data provided, please contact American Cementing at any time.

Sincerely,

**Lyndon Chandarjit**

Field Engineer II | (281) 690-3840 | lyndon.chandarjit@americacementing.com

**Field Office**      28730 US-6, Rifle, CO 81650  
Phone: (970) 657-1187

## Job Details & Summary

### Geometry

Type	Function	OD (in)	ID (in)	Weight (lb/ft)	Thread	Top (ft)	Bottom (ft)	Excess (%)
Casing	Outer	9.625	8.921	36	n/a	0	3000	0
Open Hole	Outer	n/a	8.75	n/a	n/a	3000	6476	25
Open Hole	Outer	n/a	8.75	n/a	n/a	6476	11616	0
Casing	Inner	4.5	3.92	13.5	Other	0	11601	0

### Equipment / People

Unit Type	Unit	Power Unit	Employee #1	Employee #2
Field Storage Silo	FSS-468			
Field Storage Silo	FSS-478			
Cement Trailer Float	CTF-273		Danny Ridgeway	Carlos Ramos
Light Duty Vehicles	LDV-063		Juan Garza	Hector Balderas
Cement Pump Float	CPF-053	TRH-1137	James Hansen	

### Timing

Event	Date/Time
ERTS	10/16/2023 17:00
Call Out	10/16/2023 11:00
Depart Facility	10/16/2023 13:30
On Location	10/16/2023 14:30
Rig Up Iron	10/16/2023 15:00
Job Started	10/16/2023 20:09
Job Completed	10/16/2023 22:48
Rig Down Iron	10/16/2023 23:30
Depart Location	10/17/2023 00:00

### General Job Information

Metrics	Value
Well Fluid Density	10.2 lb/gal
Well Fluid Type	WBM
Rig Circulation Vol	200 bbls
Rig Circulation Time	1.5 hours
Calculated Displacement	172 bbls
Actual Displacement	172 bbls
Total Spacer to Surface	0 bbls
Total CMT to Surface	0 bbls
Well Topped Out	No

### Job Details

Metrics	Value
Well Full Prior to Job	Yes
Well Fluid Density Into Well	10.2 lb/gal
Well Fluid Density Out of Well	10.2 lb/gal

### Job Details (cont.)

Metrics	Value
BHCT	221 °F
BHST	292 °F

### Water Analysis

Metrics	Value	Recommended
Water Source	Upright Rig Tank	
Temperature	51 °F	50-80 °F
pH Level	0-7	5.5-8.5
Chlorides	0-500 mg/L	0-3000 mg/L
Total Alkalinity		0-1000
Total Hardness	mg/L	0-500 mg/L
Carbonates	mg/L	0-100 mg/L
Sulfates	mg/L	0-1500 mg/L
Potassium	mg/L	0-3000 mg/L
Iron	mg/L	0-300 mg/L

### Circulation

Lost Circulation Experienced	Losses into Spacer	Losses into Cement	Losses into Displacement
Yes		130 INTO TAIL	

### Job Execution Information

Fluid	Product	Function	Density (lb/gal)	Yield (ft <sup>3</sup> /sk)	Water Rq. (gal/sk)	Water Rq. (gal/bbl)	Volume (sks)	Volume (bbl)	Designed Top (ft)
1	Mud Flush	Flush	8.45			40.86		20.00	1653
2	Scavenger	Scavenger	11.50	2.64	15.49		123.00	57.77	2000
3	Lead	Lead	12.70	2.15	11.52		621.00	237.91	3000
4	Tail	Tail	13.50	2.01	9.73		781.00	279.94	6476
5	Water + KCL Sub	DisplacementFinal	8.34			42.00		173.00	0

### Job Fluid Details

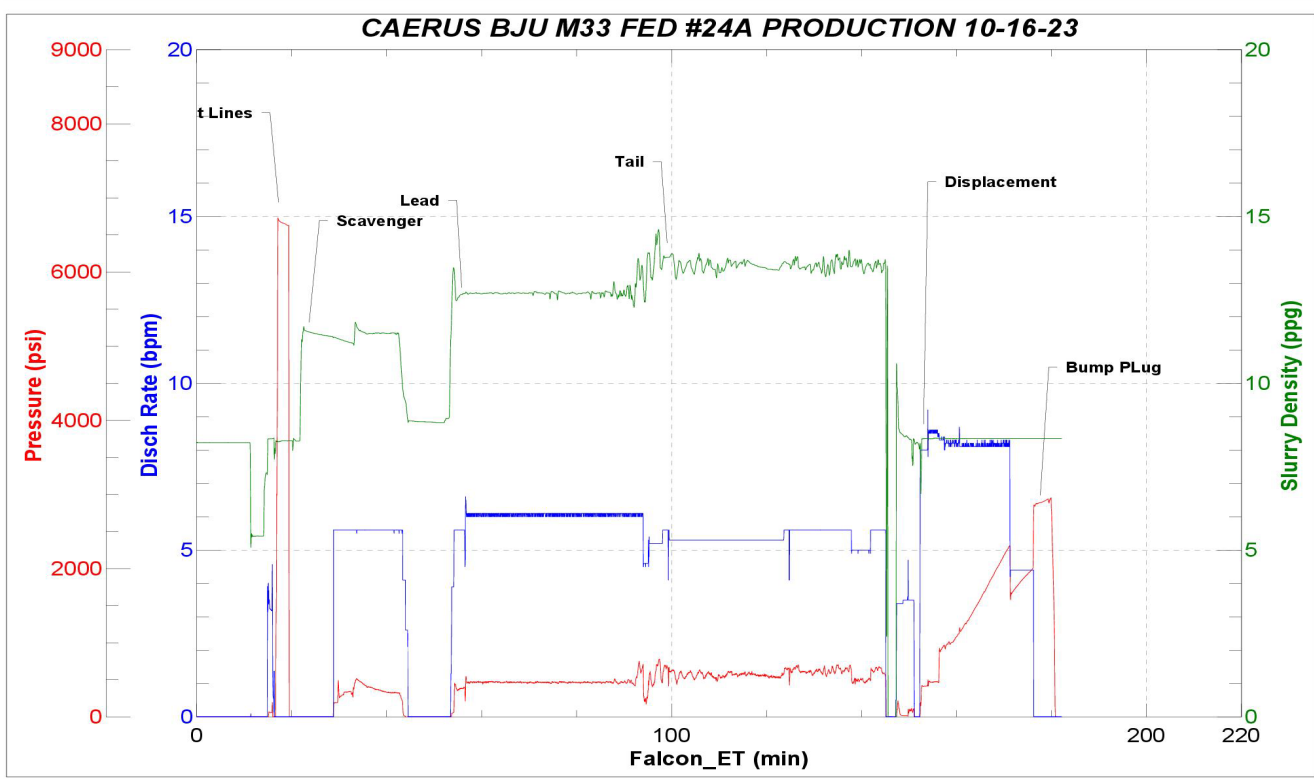
Fluid	Type	Fluid	Product	Function	Conc.	Uom
1	Flush	Mud Flush	SAPP	Surfactant	10.00	lb/bbl
1	Flush	Mud Flush	SS-201	Surfactant	0.50	gal/bbl
2	Scavenger	Scavenger	CLASS G	Cement	65.00	%
2	Scavenger	Scavenger	FLY ASH (POZZOLAN)	Extender	35.00	%
2	Scavenger	Scavenger	BENTONITE	Viscosifier	8.00	%BWOB
2	Scavenger	Scavenger	GW-86	Viscosifier	0.20	%BWOB
2	Scavenger	Scavenger	IntegraSeal PHENO	LostCirculation	3.00	lb/sk
2	Scavenger	Scavenger	R-7C	Retarder	0.25	%BWOB
2	Scavenger	Scavenger	XCem-308	Defoamer	0.30	lb/sk
3	Lead	Lead	ASTM TYPE IL	Cement	100.00	%
3	Lead	Lead	A-2	Accelerator	0.10	%BWOB
3	Lead	Lead	EC-2	BondEnhancer	1.00	%BWOB
3	Lead	Lead	FL-66	FluidLoss	0.20	%BWOB
3	Lead	Lead	GW-86	Viscosifier	0.10	%BWOB
3	Lead	Lead	IntegraSeal PHENO	LostCirculation	3.00	lb/sk
3	Lead	Lead	IntegraSeal POLI	LostCirculation	0.25	lb/sk
3	Lead	Lead	R-3	Retarder	1.00	%BWOB
3	Lead	Lead	STATIC FREE	Other	0.01	lb/sk
3	Lead	Lead	XCem-1009	Extender	10.00	lb/sk
3	Lead	Lead	XCem-308	Defoamer	0.30	lb/sk
4	Tail	Tail	CLASS G	Cement	70.00	%
4	Tail	Tail	FLY ASH (POZZOLAN)	Extender	30.00	%
4	Tail	Tail	BA-60	GasMigration	0.20	%BWOB
4	Tail	Tail	BENTONITE	Viscosifier	8.00	%BWOB
4	Tail	Tail	FL-24	FluidLoss	0.40	%BWOB
4	Tail	Tail	IntegraSeal PHENO	LostCirculation	3.00	lb/sk
4	Tail	Tail	S-8	StrengthRetroggression	26.00	%BWOB
4	Tail	Tail	XCem-308	Defoamer	0.30	%BWOB
4	Tail	Tail	XCem-916	Retarder	0.40	%BWOB

## Job Logs

Line	Event	Date (MM/DD/YY)	Time (HH:MM)	Density (lb/gal)	Pump Rate (bpm)	Pump Volume (bbls)	Pipe Pressure (psi)	Comment
1	Callout	10/16/2023	10:00					CALL OUT FOR 17:00 HRS LOCATION TIME.
2	Other	10/16/2023	13:30					DEPART AC YARD.
3	Arrive On Location	10/16/2023	14:30					ARRIVE AT LOCATION AND TALK TO CO REP OVER PIPE TALLY.
4	Safety Meeting	10/16/2023	14:45					SAFETY MEETING WITH AC CREW OVER SPOTING IN EQUIPMENT AND OF RIG UP.
5	Rig Up Iron	10/16/2023	15:00					RIG UP.
6	Waiting	10/16/2023	16:00					RIG RUNNING CASING.
7	Other	10/16/2023	18:20					STAB CEMENT PLUG CONTAINER FOR RIG TO CIRCULATE A BOTTOMS UP.
8	Safety Meeting	10/16/2023	19:25					SAFETY MEETING WITH AC CREW RIG CREW AND CO REPS OVER CEMENT OPERATION.
9	Pump Spacer	10/16/2023	20:09	8.34	3	5	160	PUMP 5 BBLS OF WATER TO OPEN TOP TO FILL LINES AND GET AIR OUT OF LINES.
10	Pressure Test Lines	10/16/2023	20:15					TEST LINES 6000 PSI.
11	Pump Spacer	10/16/2023	20:17	8.45	5.5	20	291	PUMP SAPP SPACER.
12	Pump Spacer	10/16/2023	20:21	11.5	5.5	57	552	PUMP SCAVENGER SPACER.
13	Pump Lead Cement	10/16/2023	20:31	12.7	5.5	237	394	PUMP LEAD CEMENT.
14	Pump Tail Cement	10/16/2023	21:20	13.5	5	279	723	PUMP TAIL CEMENT. LOST RETURNS AT 130 BBLS INTO TAIL.
15	Clean Pumps and Lines	10/16/2023	22:12					SHUT DOWN AND WASH LINES AND PUMPS.
16	Drop Top Plug	10/16/2023	22:18					DROP TOP PLUG PROVIDED BY CO REP.
17	Pump Displacement	10/16/2023	22:20					START WATER+CLAYCARE DISPLACEMENT.
18	Pump Displacement	10/16/2023	22:21	8.34	8	10	520	10 BBLS GONE.
19	Pump Displacement	10/16/2023	22:27	8.34	8	60	1165	60 BBLS GONE.
20	Pump Displacement	10/16/2023	22:34	8.34	8	120	1938	120 BBLS GONE.
21	Pump Displacement	10/16/2023	22:43	8.34	8	172	3000	BUMP PLUG 172 BBLS GONE. NO RETURNS. 388 BBLS OF MUD RECOVERD.
22	Check Floats	10/16/2023	22:48	8.34				BLEED OFF PSI. 2 BBLS BACK FLOATS HOLDING.
23	Safety Meeting	10/16/2023	23:00					SAFETY MEETING WITH AC CREW OVER RIGGING DOWN CEMENT HEAD, PICKLE PUMP THEN RIG DOWN PUMP AND RIG DOWN WASH UP HOSES AND NEATLY STACK THEM ON THE BACK YARD.
24	Rig Down Iron	10/16/2023	23:30					RIG DOWN.
25	Depart Location	10/17/2023	00:00					0

# Pump Diagrams

JobMaster Program Version 5.01C1  
Job Number: 71600  
Customer: CAERUS  
Well Name: BJU M33 FED 24A



Job Start: Monday, October 16, 2023