

Project: Garfield County, CO
 Site: BJU M33 496 Pad
 Well: BJU M33 FED 24A-32 496
 Wellbore: Wellbore #1
 Design: Design #5
 Latitude: 39.653461
 Longitude: -108.177780
 Ground Level: 8401.0
 RKB @ 8431.0usft (H&P #330)

FORMATION TOP DETAILS

TVDPath	MDPath	Formation
2265.0	2389.3	Wasatch
5277.0	5672.7	Wasatch G
5554.0	5974.6	Fort Union
7403.0	7943.4	Ohio Creek
7662.0	8202.5	TOG
7673.0	8213.5	Williams Fork
10221.0	10762.3	Cameo
10867.0	11408.5	Rollins

REFERENCE INFORMATION

Co-ordinate (N/E) Reference: Well BJU M33 FED 24A-32 496, True North
 Vertical (TVD) Reference: RKB @ 8431.0usft (H&P #330)
 Section (VS) Reference: Slot - (0.0N, 0.0E)
 Measured Depth Reference: RKB @ 8431.0usft (H&P #330)
 Calculation Method: Minimum Curvature

WELL DETAILS: BJU M33 FED 24A-32 496

+N/-S	+E/-W	Northing	Easting	Latitude	Longitude
0.0	0.0	14412352.60	2434843.90	39.653461	-108.177780

PROJECT DETAILS: Garfield County, CO

Geodetic System: Universal Transverse Mercator (US Survey Feet)
 Datum: NAD 1927 - Western US
 Ellipsoid: Clarke 1866
 Zone: Zone 12N (114 W to 108 W)
 System Datum: Mean Sea Level

DESIGN TARGET DETAILS

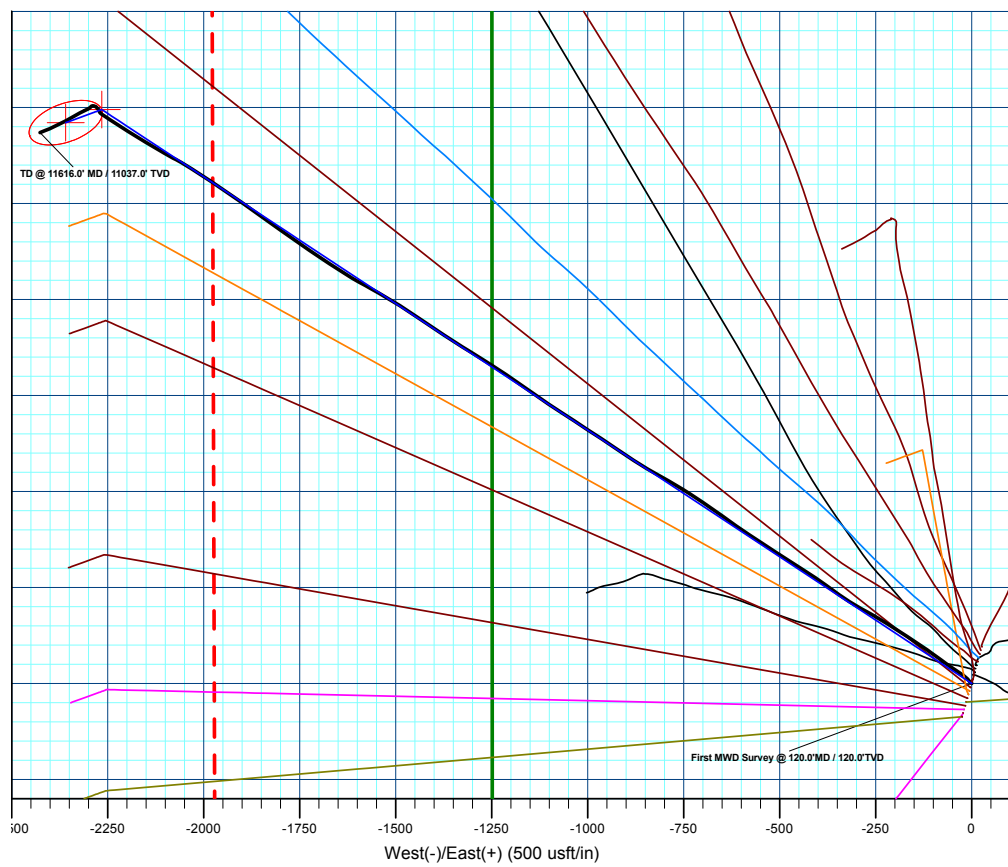
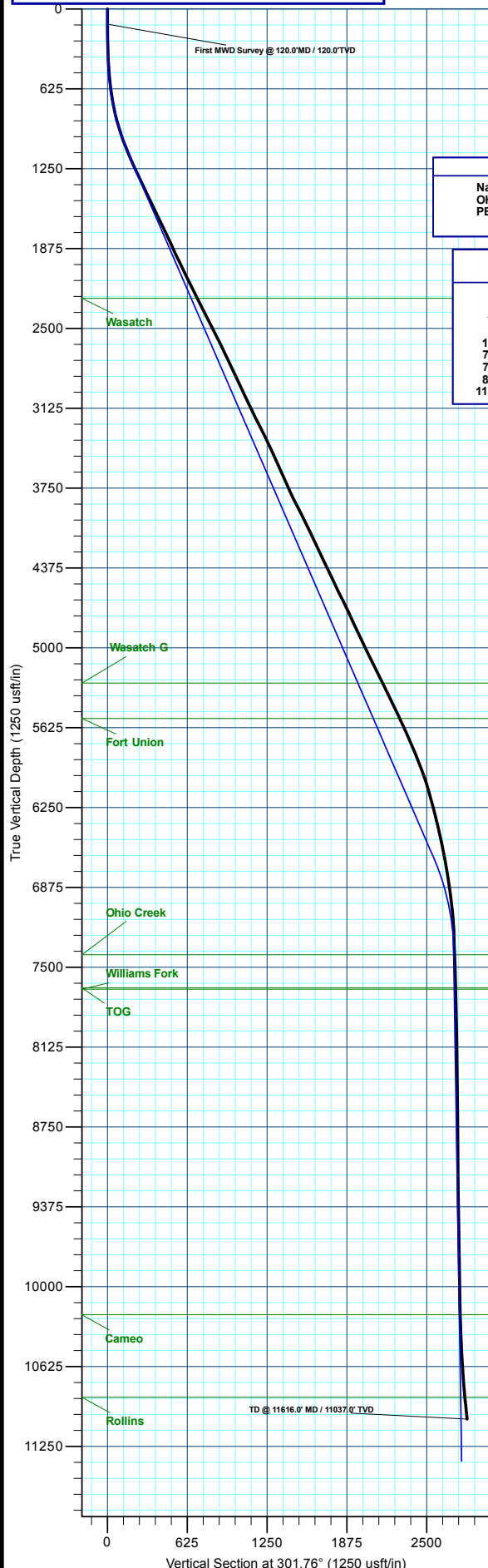
Name	TVD	+N/-S	+E/-W	Northing	Easting	Latitude	Longitude
OHCR - 24A-32	7403.0	1494.8	-2265.3	14413775.38	2432532.73	39.657563	-108.185823
PBHL - 24A-32	11367.0	1460.5	-2359.2	14413738.20	2432439.90	39.657469	-108.186156

SECTION DETAILS

MD	Inc	Azi	TVD	+N/-S	+E/-W	Dleg	TFace	VSect	Annotation
120.0	0.25	99.09	120.0	0.3	-0.2	0.00	0.00	0.3	Conductor Tie in
161.1	1.00	303.41	161.1	0.5	-0.4	3.00	-160.47	0.6	EOB @ 1.00° Inc. / 303.41° Azm
400.0	1.00	303.41	400.0	2.8	-3.9	0.00	0.00	4.8	Build 3° / 100'
1148.7	23.46	303.41	1127.0	89.6	-135.4	3.00	0.00	162.3	EOB @ 23.46° Inc. / 303.41° Azm
7161.4	23.46	303.41	6642.7	1407.8	-2133.5	0.00	0.00	2555.1	Drop 3° / 100'
7943.4	0.00	0.00	7403.0	1494.8	-2265.3	3.00	180.00	2712.9	EOD @ Vertical / Build 1.5° / 100'
8041.0	1.46	249.98	7500.5	1494.3	-2266.5	1.50	249.98	2713.6	EOB @ 1.46° Inc. / 249.98° Azm
11908.7	1.46	249.98	11367.0	1460.5	-2359.2	0.00	0.00	2774.7	TD @ 11908.7' MD / 11367.0' TVD

Azimuths to True North
 Magnetic North: 9.12°

Magnetic Field
 Strength: 50936.0nT
 Dip Angle: 65.63°
 Date: 10/9/2023
 Model: HDGM2023



Plan: Design #5 (BJU M33 FED 24A-32 496/Wellbore #1)

Created By: Will Jircik Date: 0:30, October 16 2023

Vertical Section at 301.76° (1250 usft/in)



Caerus Oil & Gas

Garfield County, CO

BJU M33 496 Pad

BJU M33 FED 24A-32 496

Wellbore #1

Design: Wellbore #1

KLX Survey Report

16 October, 2023



Company:	Caerus Oil & Gas	Local Co-ordinate Reference:	Well BJU M33 FED 24A-32 496
Project:	Garfield County, CO	TVD Reference:	RKB @ 8431.0usft (H&P #330)
Site:	BJU M33 496 Pad	MD Reference:	RKB @ 8431.0usft (H&P #330)
Well:	BJU M33 FED 24A-32 496	North Reference:	True
Wellbore:	Wellbore #1	Survey Calculation Method:	Minimum Curvature
Design:	Wellbore #1	Database:	EDM 5000.1 Single User Db

Project	Garfield County, CO		
Map System:	Universal Transverse Mercator (US Survey Feet)	System Datum:	Mean Sea Level
Geo Datum:	NAD 1927 - Western US		
Map Zone:	Zone 12N (114 W to 108 W)		

Site	BJU M33 496 Pad				
Site Position:		Northing:	14,415,354.00 usft	Latitude:	39.660635
From:	Map	Easting:	2,447,010.80 usft	Longitude:	-108.134267
Position Uncertainty:	0.0 usft	Slot Radius:	13-3/16 "	Grid Convergence:	1.83 °

Well	BJU M33 FED 24A-32 496					
Well Position	+N/-S	0.0 usft	Northing:	14,412,352.60 usft	Latitude:	39.653461
	+E/-W	0.0 usft	Easting:	2,434,843.90 usft	Longitude:	-108.177780
Position Uncertainty		0.0 usft	Wellhead Elevation:	usft	Ground Level:	8,401.0 usft

Wellbore	Wellbore #1				
Magnetics	Model Name	Sample Date	Declination (°)	Dip Angle (°)	Field Strength (nT)
	HDGM2023	10/9/2023	9.12	65.63	50,936.00000000

Design	Wellbore #1				
Audit Notes:					
Version:	1.0	Phase:	ACTUAL	Tie On Depth:	0.0
Vertical Section:	Depth From (TVD) (usft)	+N/-S (usft)	+E/-W (usft)	Direction (°)	
	0.0	0.0	0.0	301.76	

Survey Program	Date	10/16/2023			
From (usft)	To (usft)	Survey (Wellbore)	Tool Name	Description	
30.0	120.0	Conductor Gyro (Wellbore #1)	GYRO-NS	OWSG Gyrocompass Gyro	
324.0	11,616.0	KLX MWD (Wellbore #1)	MWD	OWSG MWD - Standard	

Survey										
Measured Depth (usft)	Inclination (°)	Azimuth (°)	Vertical Depth (usft)	+N/-S (usft)	+E/-W (usft)	Vertical Section (usft)	Dogleg Rate (°/100usft)	Build Rate (°/100usft)	Turn Rate (°/100usft)	
0.0	0.00	0.00	0.0	0.0	0.0	0.0	0.00	0.00	0.00	
30.0	0.00	0.00	30.0	0.0	0.0	0.0	0.00	0.00	0.00	
60.0	0.59	308.17	60.0	0.1	-0.1	0.2	1.97	1.97	0.00	
90.0	0.31	5.80	90.0	0.3	-0.2	0.3	1.66	-0.93	192.10	
First MWD Survey @ 120.0'MD / 120.0'TVD										
120.0	0.25	99.09	120.0	0.3	-0.2	0.3	1.36	-0.20	310.97	
324.0	2.30	315.50	323.9	3.2	-2.6	3.9	1.23	1.00	-70.39	
413.0	3.00	311.10	412.9	6.0	-5.6	7.9	0.82	0.79	-4.94	
500.0	5.10	321.70	499.6	10.5	-9.7	13.8	2.55	2.41	12.18	
595.0	6.60	310.00	594.1	17.4	-16.5	23.2	2.01	1.58	-12.32	

Company:	Caerus Oil & Gas	Local Co-ordinate Reference:	Well BJU M33 FED 24A-32 496
Project:	Garfield County, CO	TVD Reference:	RKB @ 8431.0usft (H&P #330)
Site:	BJU M33 496 Pad	MD Reference:	RKB @ 8431.0usft (H&P #330)
Well:	BJU M33 FED 24A-32 496	North Reference:	True
Wellbore:	Wellbore #1	Survey Calculation Method:	Minimum Curvature
Design:	Wellbore #1	Database:	EDM 5000.1 Single User Db

Survey										
Measured Depth (usft)	Inclination (°)	Azimuth (°)	Vertical Depth (usft)	+N/-S (usft)	+E/-W (usft)	Vertical Section (usft)	Dogleg Rate (°/100usft)	Build Rate (°/100usft)	Turn Rate (°/100usft)	
690.0	8.80	302.70	688.3	24.8	-26.8	35.8	2.53	2.32	-7.68	
784.0	12.00	303.60	780.7	34.1	-41.0	52.8	3.41	3.40	0.96	
879.0	14.90	305.10	873.1	46.6	-59.2	74.9	3.07	3.05	1.58	
973.0	17.80	306.50	963.3	62.1	-80.7	101.3	3.11	3.09	1.49	
1,067.0	21.00	305.60	1,051.9	80.4	-105.9	132.4	3.42	3.40	-0.96	
1,162.0	23.10	303.90	1,140.0	100.7	-135.2	168.0	2.31	2.21	-1.79	
1,256.0	24.70	302.30	1,225.9	121.5	-167.1	206.1	1.84	1.70	-1.70	
1,350.0	25.20	303.80	1,311.2	143.1	-200.4	245.7	0.86	0.53	1.60	
1,445.0	25.20	301.60	1,397.1	165.0	-234.4	286.1	0.99	0.00	-2.32	
1,539.0	26.20	297.70	1,481.8	185.1	-269.8	326.9	2.09	1.06	-4.15	
1,634.0	25.50	301.50	1,567.3	205.6	-305.8	368.2	1.89	-0.74	4.00	
1,728.0	25.20	304.00	1,652.3	227.3	-339.7	408.5	1.18	-0.32	2.66	
1,822.0	26.40	307.10	1,736.9	251.1	-372.9	449.3	1.92	1.28	3.30	
1,917.0	24.70	303.90	1,822.6	274.9	-406.3	490.1	2.30	-1.79	-3.37	
2,011.0	24.80	302.40	1,908.0	296.5	-439.2	529.5	0.68	0.11	-1.60	
2,106.0	26.90	302.30	1,993.5	318.6	-474.2	570.9	2.21	2.21	-0.11	
2,200.0	25.60	303.20	2,077.8	341.1	-509.2	612.5	1.45	-1.38	0.96	
2,295.0	25.80	303.10	2,163.4	363.6	-543.7	653.7	0.22	0.21	-0.11	
2,389.0	26.90	303.60	2,247.6	386.6	-578.5	695.4	1.19	1.17	0.53	
2,483.0	27.10	305.10	2,331.4	410.6	-613.7	738.0	0.76	0.21	1.60	
2,578.0	27.10	305.80	2,415.9	435.7	-649.0	781.2	0.34	0.00	0.74	
2,672.0	26.10	304.90	2,500.0	460.1	-683.3	823.2	1.15	-1.06	-0.96	
2,767.0	27.10	302.90	2,584.9	483.8	-718.6	865.7	1.41	1.05	-2.11	
2,861.0	25.80	301.80	2,669.1	506.2	-754.0	907.5	1.48	-1.38	-1.17	
2,955.0	25.60	300.60	2,753.8	527.3	-788.9	948.3	0.59	-0.21	-1.28	
3,059.0	25.10	298.80	2,847.8	549.4	-827.5	992.8	0.88	-0.48	-1.73	
3,153.0	24.80	301.80	2,933.0	569.4	-861.8	1,032.4	1.38	-0.32	3.19	
3,248.0	25.70	304.20	3,018.9	591.5	-895.7	1,072.9	1.43	0.95	2.53	
3,343.0	25.20	304.10	3,104.7	614.4	-929.5	1,113.7	0.53	-0.53	-0.11	
3,437.0	26.90	303.50	3,189.2	637.3	-963.8	1,155.0	1.83	1.81	-0.64	
3,532.0	27.00	303.10	3,273.9	661.0	-999.8	1,198.0	0.22	0.11	-0.42	
3,627.0	26.10	303.20	3,358.8	684.2	-1,035.4	1,240.5	0.95	-0.95	0.11	
3,721.0	24.60	302.70	3,443.8	706.1	-1,069.1	1,280.7	1.61	-1.60	-0.53	
3,816.0	23.90	304.40	3,530.4	727.7	-1,101.6	1,319.7	1.04	-0.74	1.79	
3,910.0	24.80	305.10	3,616.0	749.7	-1,133.5	1,358.4	1.01	0.96	0.74	
4,004.0	23.80	304.30	3,701.7	771.8	-1,165.3	1,397.0	1.12	-1.06	-0.85	
4,099.0	24.60	304.70	3,788.4	793.8	-1,197.4	1,435.9	0.86	0.84	0.42	
4,193.0	26.50	303.40	3,873.2	816.5	-1,231.0	1,476.4	2.11	2.02	-1.38	
4,287.0	27.40	302.20	3,957.0	839.6	-1,266.8	1,519.0	1.12	0.96	-1.28	
4,381.0	26.50	302.10	4,040.7	862.3	-1,302.8	1,561.6	0.96	-0.96	-0.11	
4,475.0	25.10	301.70	4,125.4	883.9	-1,337.6	1,602.5	1.50	-1.49	-0.43	
4,569.0	25.60	304.00	4,210.3	905.7	-1,371.4	1,642.8	1.17	0.53	2.45	
4,664.0	25.20	303.80	4,296.1	928.4	-1,405.2	1,683.5	0.43	-0.42	-0.21	

Company:	Caerus Oil & Gas	Local Co-ordinate Reference:	Well BJU M33 FED 24A-32 496
Project:	Garfield County, CO	TVD Reference:	RKB @ 8431.0usft (H&P #330)
Site:	BJU M33 496 Pad	MD Reference:	RKB @ 8431.0usft (H&P #330)
Well:	BJU M33 FED 24A-32 496	North Reference:	True
Wellbore:	Wellbore #1	Survey Calculation Method:	Minimum Curvature
Design:	Wellbore #1	Database:	EDM 5000.1 Single User Db

Survey										
Measured Depth (usft)	Inclination (°)	Azimuth (°)	Vertical Depth (usft)	+N/-S (usft)	+E/-W (usft)	Vertical Section (usft)	Dogleg Rate (°/100usft)	Build Rate (°/100usft)	Turn Rate (°/100usft)	
4,758.0	25.40	303.60	4,381.1	950.7	-1,438.6	1,723.6	0.23	0.21	-0.21	
4,852.0	25.30	303.60	4,466.1	973.0	-1,472.1	1,763.9	0.11	-0.11	0.00	
4,946.0	26.60	300.80	4,550.6	994.9	-1,506.9	1,805.0	1.90	1.38	-2.98	
5,041.0	26.30	299.90	4,635.7	1,016.3	-1,543.5	1,847.3	0.53	-0.32	-0.95	
5,135.0	24.70	298.70	4,720.5	1,036.1	-1,578.7	1,887.7	1.79	-1.70	-1.28	
5,229.0	25.20	301.40	4,805.7	1,055.9	-1,613.1	1,927.3	1.32	0.53	2.87	
5,324.0	25.00	303.10	4,891.8	1,077.4	-1,647.1	1,967.6	0.79	-0.21	1.79	
5,418.0	26.20	303.80	4,976.5	1,099.8	-1,681.0	2,008.2	1.32	1.28	0.74	
5,513.0	26.60	304.10	5,061.6	1,123.4	-1,716.1	2,050.4	0.44	0.42	0.32	
5,608.0	25.50	304.10	5,147.0	1,146.8	-1,750.6	2,092.1	1.16	-1.16	0.00	
5,702.0	26.00	304.60	5,231.6	1,169.9	-1,784.3	2,132.9	0.58	0.53	0.53	
5,797.0	26.20	305.40	5,316.9	1,193.8	-1,818.6	2,174.6	0.43	0.21	0.84	
5,892.0	25.50	304.90	5,402.4	1,217.7	-1,852.4	2,216.0	0.77	-0.74	-0.53	
5,987.0	26.00	305.10	5,488.0	1,241.4	-1,886.2	2,257.2	0.53	0.53	0.21	
6,081.0	25.20	305.70	5,572.8	1,264.9	-1,919.3	2,297.7	0.89	-0.85	0.64	
6,176.0	24.70	305.30	5,658.9	1,288.2	-1,952.0	2,337.7	0.56	-0.53	-0.42	
6,271.0	23.70	304.20	5,745.6	1,310.4	-1,984.0	2,376.6	1.15	-1.05	-1.16	
6,365.0	22.30	302.60	5,832.1	1,330.6	-2,014.6	2,413.3	1.63	-1.49	-1.70	
6,460.0	20.60	300.10	5,920.5	1,348.7	-2,044.2	2,448.0	2.03	-1.79	-2.63	
6,554.0	19.70	298.60	6,008.7	1,364.6	-2,072.5	2,480.4	1.10	-0.96	-1.60	
6,649.0	16.60	299.90	6,099.0	1,379.0	-2,098.3	2,509.9	3.29	-3.26	1.37	
6,743.0	15.60	299.80	6,189.3	1,392.0	-2,120.9	2,536.0	1.06	-1.06	-0.11	
6,838.0	13.80	300.50	6,281.2	1,404.1	-2,141.8	2,560.1	1.90	-1.89	0.74	
6,933.0	13.30	300.90	6,373.6	1,415.4	-2,160.9	2,582.3	0.54	-0.53	0.42	
7,027.0	12.70	301.40	6,465.2	1,426.4	-2,179.0	2,603.5	0.65	-0.64	0.53	
7,122.0	12.00	304.20	6,558.0	1,437.4	-2,196.1	2,623.8	0.97	-0.74	2.95	
7,216.0	10.90	302.70	6,650.1	1,447.6	-2,211.6	2,642.5	1.21	-1.17	-1.60	
7,311.0	9.10	302.90	6,743.6	1,456.6	-2,225.5	2,658.9	1.90	-1.89	0.21	
7,405.0	8.90	300.60	6,836.5	1,464.3	-2,238.0	2,673.6	0.44	-0.21	-2.45	
7,500.0	7.70	304.30	6,930.5	1,471.6	-2,249.6	2,687.4	1.38	-1.26	3.89	
7,594.0	6.10	305.50	7,023.8	1,478.1	-2,258.9	2,698.6	1.71	-1.70	1.28	
7,689.0	4.60	305.60	7,118.4	1,483.2	-2,266.1	2,707.5	1.58	-1.58	0.11	
7,784.0	2.40	327.80	7,213.2	1,487.1	-2,270.2	2,713.1	2.68	-2.32	23.37	
7,878.0	2.10	337.70	7,307.1	1,490.4	-2,271.9	2,716.2	0.52	-0.32	10.53	
7,973.0	1.90	338.40	7,402.1	1,493.5	-2,273.2	2,718.9	0.21	-0.21	0.74	
8,067.0	1.90	323.80	7,496.0	1,496.2	-2,274.7	2,721.6	0.51	0.00	-15.53	
8,162.0	1.80	313.60	7,591.0	1,498.5	-2,276.7	2,724.5	0.36	-0.11	-10.74	
8,256.0	1.80	309.70	7,684.9	1,500.5	-2,278.9	2,727.4	0.13	0.00	-4.15	
8,351.0	1.50	309.60	7,779.9	1,502.2	-2,281.0	2,730.1	0.32	-0.32	-0.11	
8,446.0	1.50	289.00	7,874.9	1,503.4	-2,283.1	2,732.6	0.56	0.00	-21.68	
8,540.0	1.20	279.10	7,968.8	1,503.9	-2,285.2	2,734.7	0.40	-0.32	-10.53	
8,635.0	1.10	273.00	8,063.8	1,504.2	-2,287.1	2,736.4	0.17	-0.11	-6.42	
8,729.0	1.20	265.20	8,157.8	1,504.1	-2,289.0	2,738.0	0.20	0.11	-8.30	

Company:	Caerus Oil & Gas	Local Co-ordinate Reference:	Well BJU M33 FED 24A-32 496
Project:	Garfield County, CO	TVD Reference:	RKB @ 8431.0usft (H&P #330)
Site:	BJU M33 496 Pad	MD Reference:	RKB @ 8431.0usft (H&P #330)
Well:	BJU M33 FED 24A-32 496	North Reference:	True
Wellbore:	Wellbore #1	Survey Calculation Method:	Minimum Curvature
Design:	Wellbore #1	Database:	EDM 5000.1 Single User Db

Survey										
Measured Depth (usft)	Inclination (°)	Azimuth (°)	Vertical Depth (usft)	+N/-S (usft)	+E/-W (usft)	Vertical Section (usft)	Dogleg Rate (°/100usft)	Build Rate (°/100usft)	Turn Rate (°/100usft)	
8,824.0	1.50	250.30	8,252.8	1,503.6	-2,291.2	2,739.5	0.48	0.32	-15.68	
8,918.0	1.10	233.80	8,346.7	1,502.7	-2,293.1	2,740.7	0.58	-0.43	-17.55	
9,013.0	0.90	211.30	8,441.7	1,501.5	-2,294.2	2,741.0	0.46	-0.21	-23.68	
9,107.0	0.90	225.40	8,535.7	1,500.3	-2,295.1	2,741.2	0.24	0.00	15.00	
9,202.0	1.50	238.30	8,630.7	1,499.2	-2,296.7	2,741.9	0.69	0.63	13.58	
9,296.0	1.10	244.40	8,724.7	1,498.1	-2,298.5	2,742.9	0.45	-0.43	6.49	
9,390.0	0.80	227.40	8,818.7	1,497.3	-2,299.8	2,743.6	0.43	-0.32	-18.09	
9,485.0	0.90	241.80	8,913.6	1,496.5	-2,301.0	2,744.1	0.25	0.11	15.16	
9,579.0	1.10	240.10	9,007.6	1,495.7	-2,302.4	2,744.9	0.22	0.21	-1.81	
9,674.0	1.20	250.00	9,102.6	1,494.9	-2,304.1	2,746.0	0.23	0.11	10.42	
9,768.0	1.10	246.00	9,196.6	1,494.2	-2,305.9	2,747.1	0.14	-0.11	-4.26	
9,863.0	1.30	240.30	9,291.6	1,493.3	-2,307.7	2,748.1	0.24	0.21	-6.00	
9,957.0	1.20	244.50	9,385.6	1,492.3	-2,309.5	2,749.2	0.14	-0.11	4.47	
10,052.0	1.70	241.10	9,480.5	1,491.2	-2,311.6	2,750.4	0.53	0.53	-3.58	
10,146.0	1.70	243.40	9,574.5	1,489.9	-2,314.1	2,751.8	0.07	0.00	2.45	
10,241.0	1.80	246.10	9,669.4	1,488.7	-2,316.7	2,753.4	0.14	0.11	2.84	
10,335.0	1.90	241.90	9,763.4	1,487.4	-2,319.4	2,755.0	0.18	0.11	-4.47	
10,430.0	2.00	242.30	9,858.3	1,485.9	-2,322.3	2,756.6	0.11	0.11	0.42	
10,525.0	2.00	239.30	9,953.3	1,484.2	-2,325.2	2,758.3	0.11	0.00	-3.16	
10,619.0	2.20	238.30	10,047.2	1,482.5	-2,328.1	2,759.8	0.22	0.21	-1.06	
10,713.0	2.60	247.60	10,141.1	1,480.7	-2,331.6	2,761.9	0.59	0.43	9.89	
10,808.0	3.20	239.60	10,236.0	1,478.5	-2,335.9	2,764.4	0.76	0.63	-8.42	
10,902.0	3.60	236.20	10,329.8	1,475.6	-2,340.6	2,766.8	0.48	0.43	-3.62	
10,997.0	5.00	241.30	10,424.6	1,471.9	-2,346.7	2,770.1	1.53	1.47	5.37	
11,091.0	6.10	244.80	10,518.1	1,467.8	-2,354.8	2,774.8	1.22	1.17	3.72	
11,185.0	7.00	241.30	10,611.5	1,462.9	-2,364.4	2,780.4	1.05	0.96	-3.72	
11,280.0	8.00	242.70	10,705.7	1,457.1	-2,375.3	2,786.6	1.07	1.05	1.47	
11,374.0	8.60	244.00	10,798.7	1,451.0	-2,387.5	2,793.8	0.67	0.64	1.38	
11,469.0	9.70	247.30	10,892.5	1,444.8	-2,401.2	2,802.2	1.28	1.16	3.47	
11,551.0	11.00	247.80	10,973.2	1,439.2	-2,414.9	2,810.8	1.59	1.59	0.61	
TD @ 11616.0' MD / 11037.0' TVD										
11,616.0	11.00	247.80	11,037.0	1,434.5	-2,426.3	2,818.1	0.00	0.00	0.00	

Design Annotations					
Measured Depth (usft)	Vertical Depth (usft)	Local Coordinates		Comment	
		+N/-S (usft)	+E/-W (usft)		
120.0	120.0	0.3	-0.2	First MWD Survey @ 120.0'MD / 120.0'TVD	
11,616.0	11,037.0	1,434.5	-2,426.3	TD @ 11616.0' MD / 11037.0' TVD	

Checked By: _____ Approved By: _____ Date: _____