

LEGEND:

- = AS-DRILLED WELLHEAD.
- ◆ = TOP OF GAS INTERVAL.
- = BOTTOM HOLE.
- ▲ = SECTION CORNERS LOCATED. (NAD 83)

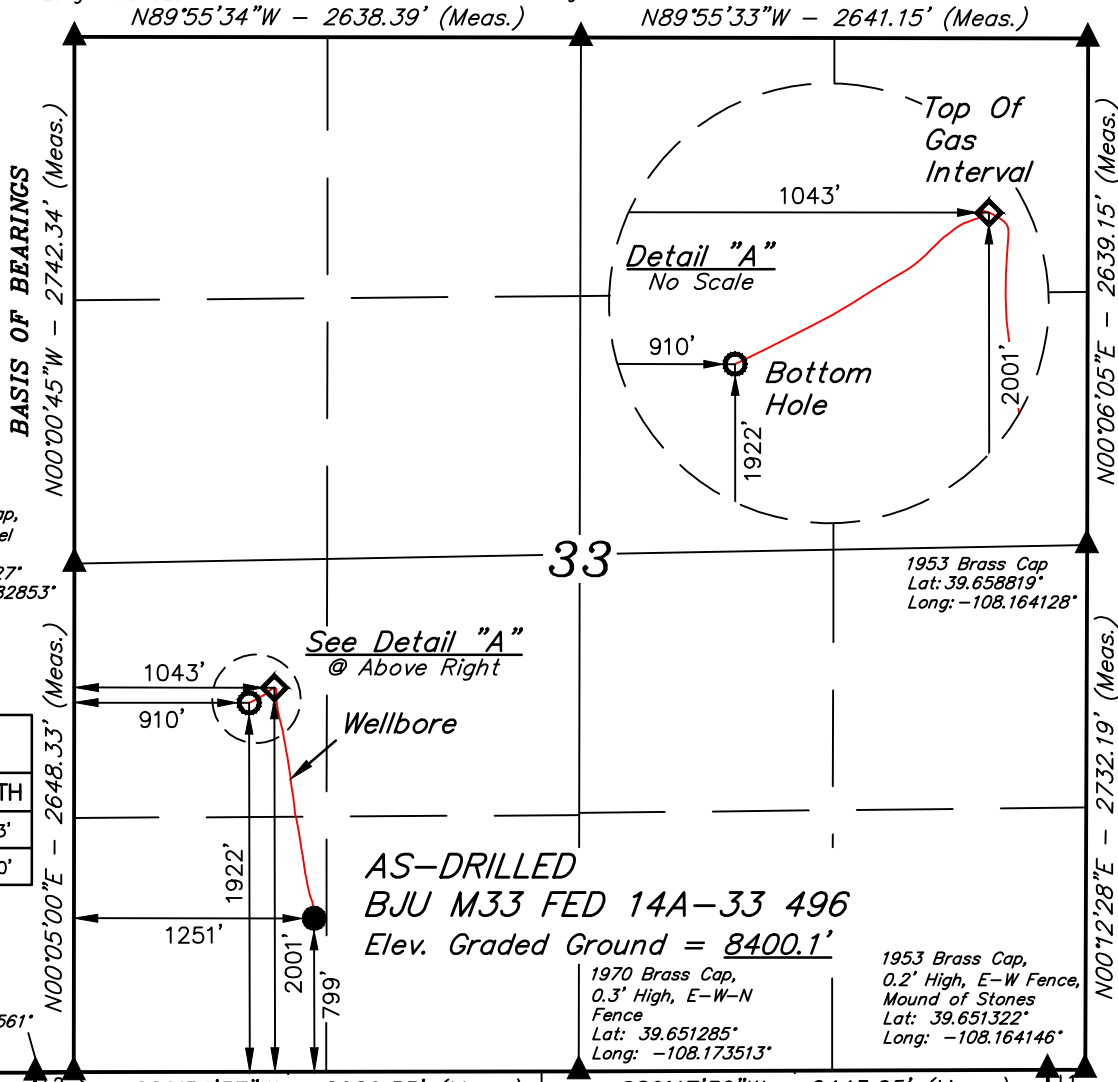
T4S, R96W, 6th P.M.

1970 Brass Cap,
0.2' High, Mound
of Stones
Lat: 39.666052°
Long: -108.182875°

1970 Brass Cap,
0.7' High, Mound
of Stones
Lat: 39.666057°
Long: -108.173507°

1953 Brass Cap,
0.9' High, Steel
Post
Lat: 39.666061°
Long: -108.164129°

NOTE:
Distances referenced
on plat to section lines
are perpendicular.



PDOP = 1.9

NAD 83 (AS-DRILLED WELLHEAD)	
LATITUDE = 39°39'12.47" (39.653463°)	
LONGITUDE = -108°10'42.27" (-108.178409°)	
NAD 27 (AS-DRILLED WELLHEAD)	
LATITUDE = 39°39'12.55" (39.653487°)	
LONGITUDE = -108°10'39.98" (-108.177771°)	
UTM, NAD 27 (ZONE 12)	
N: 14412362.44' E: 2434845.97'	
NAD 83 (TOP OF GAS INTERVAL)	
LATITUDE = 39°39'24.33" (39.656759°)	
LONGITUDE = -108°10'44.94" (-108.179151°)	
NAD 27 (TOP OF GAS INTERVAL)	
LATITUDE = 39°39'24.42" (39.656784°)	
LONGITUDE = -108°10'42.65" (-108.178514°)	
UTM, NAD 27 (ZONE 12)	
N: 14413556.40' E: 2434599.27'	
NAD 83 (BOTTOM HOLE)	
LATITUDE = 39°39'23.55" (39.656542°)	
LONGITUDE = -108°10'46.63" (-108.179619°)	
NAD 27 (BOTTOM HOLE)	
LATITUDE = 39°39'23.64" (39.656567°)	
LONGITUDE = -108°10'44.34" (-108.178982°)	
UTM, NAD 27 (ZONE 12)	
N: 14413473.17' E: 2434469.82'	



CERTIFICATE OF SURVEY

THIS IS TO CERTIFY THAT THE ABOVE PLAT WAS PREPARED AND THE LOCATION AS SHOWN WAS STAKED ON THE GROUND FROM FIELD NOTES OF ACTUAL SURVEYS MADE BY ME OR UNDER MY SUPERVISION AND THAT THE SAME ARE TRUE AND CORRECT TO THE BEST OF MY KNOWLEDGE AND BELIEF.

Clint Sorenson
REGISTERED LAND SURVEYOR
REGISTRATION NO. 38130
STATE OF COLORADO

12-04-23

BASIS OF BEARINGS
BEARINGS ARE BASED ON THE ASSUMPTION THAT THE WEST LINE OF THE NORTHWEST 1/4 OF SECTION 33 BEARS N00°00'45"W BETWEEN MONUMENTS DESCRIBED HEREON.

BASIS OF ELEVATION
OPUS SOLUTION GENERATED NAVD 88



Caerus Oil & Gas LLC

**AS-DRILLED BJU M33 FED 14A-33 496
SW 1/4 SW 1/4, SECTION 33, T4S, R96W, 6th P.M.
GARFIELD COUNTY, COLORADO**



UELS, LLC
Corporate Office * 85 South 200 East
Vernal, UT 84078 * (435) 789-1017

SURVEYED BY	CLINT SORENSON, D.H.	08-23-23	SCALE
DRAWN BY	T.L.L.	12-04-23	1" = 1000'
AS-DRILLED WELL LOCATION PLAT			