

Project: Garfield County, CO  
 Site: BJU M33 496 Pad  
 Well: BJU M33 FED 14A-33 496  
 Wellbore: Wellbore #1  
 Design: Design #4  
 Latitude: 39.653487  
 Longitude: -108.177770  
 Ground Level: 8401.0  
 RKB @ 8431.0usft (H&P #329)

**FORMATION TOP DETAILS**

TVDPATH	MDPATH	FORMATION
2396.0	2418.8	Wasatch
5396.0	5475.7	Wasatch G
5639.0	5723.3	Fort Union
7474.0	7588.4	Ohio Creek
7733.0	7847.5	TOG
7733.0	7847.5	Williams Fork
10335.0	10450.3	Cameo
10961.0	11076.5	Rollins

**REFERENCE INFORMATION**

Co-ordinate (N/E) Reference: Well BJU M33 FED 14A-33 496, True North  
 Vertical (TVD) Reference: RKB @ 8431.0usft (H&P #329)  
 Section (VS) Reference: Slot - (0.0N, 0.0E)  
 Measured Depth Reference: RKB @ 8431.0usft (H&P #329)  
 Calculation Method: Minimum Curvature

**WELL DETAILS: BJU M33 FED 14A-33 496**

+N/-S	+E/-W	Northing	Easting	Latitude	Longitude
0.0	0.0	14412362.29	8401.0 2434846.31	39.653487	-108.177770

**PROJECT DETAILS: Garfield County, CO**

Geodetic System: Universal Transverse Mercator (US Survey Feet)  
 Datum: NAD 1927 - Western US  
 Ellipsoid: Clarke 1866  
 Zone: Zone 12N (114 W to 108 W)  
 System Datum: Mean Sea Level

**Azimuths to True North**  
 Magnetic North: 9.12°

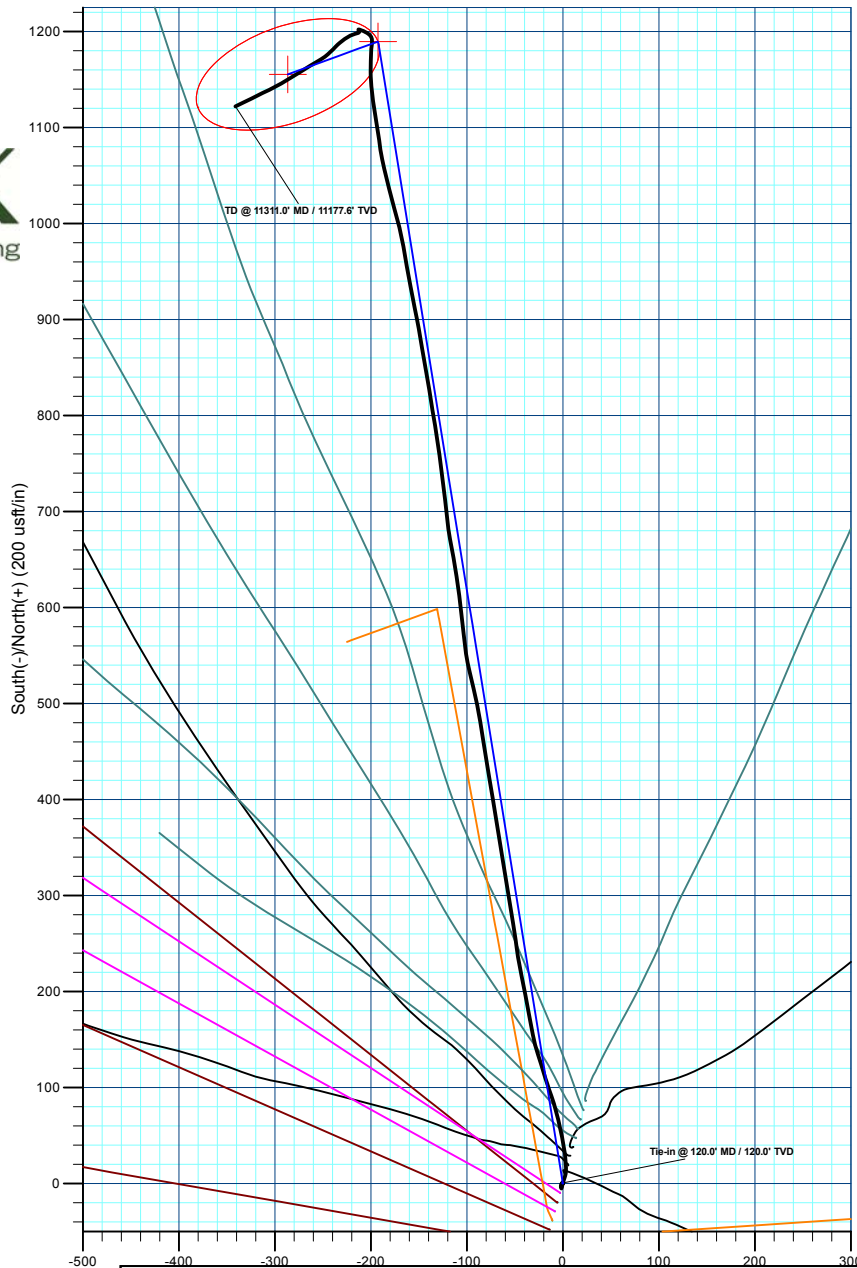
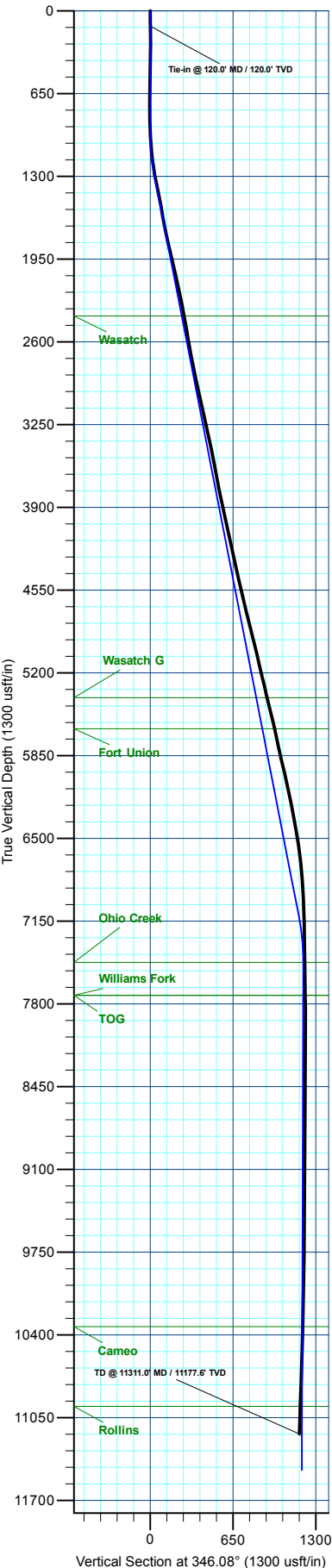
Magnetic Field  
 Strength: 50938.0nT  
 Dip Angle: 65.63°  
 Date: 10/2/2023  
 Model: HDGM2023

**DESIGN TARGET DETAILS**

Name	TVD	+N/-S	+E/-W	Northing	Easting	Latitude	Longitude
OHCR - 14A-33	7474.0	1189.7	-192.5	14413545.38	2434816.53	39.656752	-108.178454
PBHL - 14A-33	11461.0	1155.5	-286.4	14413508.20	2434523.70	39.656658	-108.178787

**SECTION DETAILS**

MD	Inc	Azi	TVD	+N/-S	+E/-W	Dleg	TFace	Vsect	Annotation
120.0	0.45	43.18	120.0	0.6	-0.4	0.00	0.00	0.7	Conductor Tie in
170.0	0.45	43.18	170.0	0.9	-0.2	0.00	0.00	0.9	Drop 3° / 100'
185.0	0.00	0.00	185.0	0.9	-0.1	3.00	-180.00	0.9	EOD @ Vertical
950.0	0.00	0.00	950.0	0.9	-0.1	0.00	0.00	0.9	Build 3° / 100'
1319.1	11.07	350.81	1316.8	36.0	-5.8	3.00	350.81	36.4	EOB @ 11.07° Inc. / 350.81° Azm
7219.3	11.07	350.81	7107.2	1154.6	-186.8	0.00	0.00	1165.7	Drop 3° / 100'
7588.4	0.00	0.00	7474.0	1189.7	-192.5	3.00	180.00	1201.1	EOD @ Vertical / Build 1.5° / 100'
7685.4	1.45	249.98	7571.0	1189.3	-193.6	1.50	249.98	1201.0	EOB @ 1.45° Inc. / 249.98° Azm
11576.7	1.45	249.98	11461.0	1155.5	-286.4	0.00	0.00	1190.5	TD @ 11576.7' MD / 11461.0' TVD



Plan: Design #4 (BJU M33 FED 14A-33 496/Wellbore #1)

Created By: Will Jircik Date: 9:25, October 09 2023



## **Caerus Oil & Gas**

**Garfield County, CO**

**BJU M33 496 Pad**

**BJU M33 FED 14A-33 496**

**Wellbore #1**

**Design: Wellbore #1**

## **KLX Survey Report**

**09 October, 2023**



<b>Company:</b>	Caerus Oil & Gas	<b>Local Co-ordinate Reference:</b>	Well BJU M33 FED 14A-33 496
<b>Project:</b>	Garfield County, CO	<b>TVD Reference:</b>	RKB @ 8431.0usft (H&P #329)
<b>Site:</b>	BJU M33 496 Pad	<b>MD Reference:</b>	RKB @ 8431.0usft (H&P #329)
<b>Well:</b>	BJU M33 FED 14A-33 496	<b>North Reference:</b>	True
<b>Wellbore:</b>	Wellbore #1	<b>Survey Calculation Method:</b>	Minimum Curvature
<b>Design:</b>	Wellbore #1	<b>Database:</b>	EDM 5000.1 Single User Db

<b>Project</b>	Garfield County, CO		
<b>Map System:</b>	Universal Transverse Mercator (US Survey Feet)	<b>System Datum:</b>	Mean Sea Level
<b>Geo Datum:</b>	NAD 1927 - Western US		
<b>Map Zone:</b>	Zone 12N (114 W to 108 W)		

<b>Site</b>	BJU M33 496 Pad				
<b>Site Position:</b>		<b>Northing:</b>	14,415,354.00 usft	<b>Latitude:</b>	39.660635
<b>From:</b>	Map	<b>Easting:</b>	2,447,010.80 usft	<b>Longitude:</b>	-108.134267
<b>Position Uncertainty:</b>	0.0 usft	<b>Slot Radius:</b>	13-3/16 "	<b>Grid Convergence:</b>	1.83 °

<b>Well</b>	BJU M33 FED 14A-33 496					
<b>Well Position</b>	<b>+N/-S</b>	0.0 usft	<b>Northing:</b>	14,412,362.29 usft	<b>Latitude:</b>	39.653487
	<b>+E/-W</b>	0.0 usft	<b>Easting:</b>	2,434,846.32 usft	<b>Longitude:</b>	-108.177770
<b>Position Uncertainty</b>		0.0 usft	<b>Wellhead Elevation:</b>	usft	<b>Ground Level:</b>	8,401.0 usft

<b>Wellbore</b>	Wellbore #1				
<b>Magnetics</b>	<b>Model Name</b>	<b>Sample Date</b>	<b>Declination (°)</b>	<b>Dip Angle (°)</b>	<b>Field Strength (nT)</b>
	HDGM2023	10/2/2023	9.12	65.63	50,938.00000000

<b>Design</b>	Wellbore #1				
<b>Audit Notes:</b>					
<b>Version:</b>	1.0	<b>Phase:</b>	ACTUAL	<b>Tie On Depth:</b>	0.0
<b>Vertical Section:</b>	<b>Depth From (TVD) (usft)</b>	<b>+N/-S (usft)</b>	<b>+E/-W (usft)</b>	<b>Direction (°)</b>	
	0.0	0.0	0.0	343.09	

<b>Survey Program</b>	<b>Date</b>	10/9/2023			
<b>From (usft)</b>	<b>To (usft)</b>	<b>Survey (Wellbore)</b>	<b>Tool Name</b>	<b>Description</b>	
30.0	120.0	Conductor Gyro (Wellbore #1)	GYRO-NS	OWSG Gyrocompass Gyro	
235.0	11,311.0	KLX MWD (Wellbore #1)	MWD	OWSG MWD - Standard	

<b>Survey</b>										
<b>Measured Depth (usft)</b>	<b>Inclination (°)</b>	<b>Azimuth (°)</b>	<b>Vertical Depth (usft)</b>	<b>+N/-S (usft)</b>	<b>+E/-W (usft)</b>	<b>Vertical Section (usft)</b>	<b>Dogleg Rate (°/100usft)</b>	<b>Build Rate (°/100usft)</b>	<b>Turn Rate (°/100usft)</b>	
0.0	0.00	0.00	0.0	0.0	0.0	0.0	0.00	0.00	0.00	
30.0	0.00	0.00	30.0	0.0	0.0	0.0	0.00	0.00	0.00	
60.0	0.89	299.72	60.0	0.1	-0.2	0.2	2.97	2.97	0.00	
90.0	0.59	336.86	90.0	0.4	-0.5	0.5	1.83	-1.00	123.80	
<b>Tie-in @ 120.0' MD / 120.0' TVD</b>										
120.0	0.45	43.18	120.0	0.6	-0.4	0.7	1.94	-0.47	221.07	
235.0	0.30	262.10	235.0	0.9	-0.4	1.0	0.62	-0.13	-122.68	
324.0	0.50	232.30	324.0	0.6	-1.0	0.9	0.32	0.22	-33.48	
413.0	0.40	190.30	413.0	0.1	-1.3	0.5	0.38	-0.11	-47.19	
500.0	0.70	203.60	500.0	-0.7	-1.6	-0.2	0.37	0.34	15.29	

<b>Company:</b>	Caerus Oil & Gas	<b>Local Co-ordinate Reference:</b>	Well BJU M33 FED 14A-33 496
<b>Project:</b>	Garfield County, CO	<b>TVD Reference:</b>	RKB @ 8431.0usft (H&P #329)
<b>Site:</b>	BJU M33 496 Pad	<b>MD Reference:</b>	RKB @ 8431.0usft (H&P #329)
<b>Well:</b>	BJU M33 FED 14A-33 496	<b>North Reference:</b>	True
<b>Wellbore:</b>	Wellbore #1	<b>Survey Calculation Method:</b>	Minimum Curvature
<b>Design:</b>	Wellbore #1	<b>Database:</b>	EDM 5000.1 Single User Db

Survey										
Measured Depth (usft)	Inclination (°)	Azimuth (°)	Vertical Depth (usft)	+N/-S (usft)	+E/-W (usft)	Vertical Section (usft)	Dogleg Rate (°/100usft)	Build Rate (°/100usft)	Turn Rate (°/100usft)	
595.0	1.10	200.70	595.0	-2.1	-2.2	-1.4	0.42	0.42	-3.05	
689.0	1.30	162.30	689.0	-4.0	-2.2	-3.2	0.86	0.21	-40.85	
784.0	0.40	126.20	783.9	-5.2	-1.6	-4.5	1.06	-0.95	-38.00	
878.0	1.90	6.80	877.9	-3.8	-1.1	-3.3	2.26	1.60	-127.02	
973.0	4.10	18.50	972.8	1.0	0.2	0.9	2.39	2.32	12.32	
1,067.0	4.60	16.90	1,066.5	7.8	2.3	6.7	0.55	0.53	-1.70	
1,161.0	7.00	359.60	1,160.0	17.1	3.4	15.4	3.13	2.55	-18.40	
1,254.0	9.50	352.20	1,252.1	30.4	2.3	28.4	2.92	2.69	-7.96	
1,349.0	12.00	348.60	1,345.4	47.8	-0.7	46.0	2.72	2.63	-3.79	
1,443.0	11.10	346.70	1,437.5	66.2	-4.7	64.7	1.04	-0.96	-2.02	
1,537.0	10.50	343.00	1,529.8	83.2	-9.3	82.3	0.98	-0.64	-3.94	
1,631.0	9.60	340.10	1,622.4	98.8	-14.5	98.7	1.10	-0.96	-3.09	
1,725.0	11.70	343.90	1,714.8	115.3	-19.8	116.1	2.35	2.23	4.04	
1,820.0	12.70	341.40	1,807.6	134.4	-25.8	136.1	1.19	1.05	-2.63	
1,914.0	13.30	348.50	1,899.2	154.8	-31.3	157.2	1.81	0.64	7.55	
2,008.0	13.10	350.30	1,990.7	175.9	-35.2	178.6	0.49	-0.21	1.91	
2,103.0	12.60	349.00	2,083.4	196.7	-39.0	199.6	0.61	-0.53	-1.37	
2,198.0	12.20	348.00	2,176.1	216.7	-43.1	219.9	0.48	-0.42	-1.05	
2,292.0	11.80	351.00	2,268.1	235.9	-46.6	239.3	0.79	-0.43	3.19	
2,387.0	10.50	352.10	2,361.3	254.1	-49.3	257.4	1.39	-1.37	1.16	
2,482.0	10.90	351.10	2,454.6	271.5	-51.9	274.9	0.46	0.42	-1.05	
2,576.0	9.70	350.30	2,547.1	288.1	-54.6	291.5	1.29	-1.28	-0.85	
2,671.0	10.40	350.70	2,640.7	304.5	-57.4	308.0	0.74	0.74	0.42	
2,766.0	9.90	350.80	2,734.2	321.0	-60.1	324.6	0.53	-0.53	0.11	
2,860.0	11.50	351.10	2,826.5	338.2	-62.8	341.9	1.70	1.70	0.32	
2,955.0	12.40	350.40	2,919.5	357.6	-66.0	361.4	0.96	0.95	-0.74	
2,982.0	12.70	351.50	2,945.8	363.4	-66.9	367.2	1.42	1.11	4.07	
3,061.0	13.00	350.70	3,022.9	380.8	-69.6	384.6	0.44	0.38	-1.01	
3,155.0	12.70	350.30	3,114.5	401.4	-73.1	405.3	0.33	-0.32	-0.43	
3,250.0	12.80	350.80	3,207.2	422.1	-76.5	426.1	0.16	0.11	0.53	
3,345.0	12.50	350.10	3,299.9	442.6	-79.9	446.7	0.35	-0.32	-0.74	
3,439.0	11.90	351.20	3,391.7	462.2	-83.2	466.4	0.68	-0.64	1.17	
3,534.0	11.60	350.90	3,484.7	481.3	-86.2	485.6	0.32	-0.32	-0.32	
3,628.0	10.20	348.40	3,577.0	498.8	-89.4	503.2	1.57	-1.49	-2.66	
3,723.0	11.00	347.30	3,670.4	515.9	-93.0	520.6	0.87	0.84	-1.16	
3,818.0	11.20	345.60	3,763.6	533.7	-97.3	538.9	0.40	0.21	-1.79	
3,912.0	12.00	352.30	3,855.7	552.2	-100.9	557.7	1.67	0.85	7.13	
4,006.0	12.20	353.70	3,947.6	571.7	-103.3	577.1	0.38	0.21	1.49	
4,101.0	12.60	354.40	4,040.4	592.0	-105.4	597.1	0.45	0.42	0.74	
4,195.0	12.80	352.30	4,132.1	612.6	-107.8	617.4	0.54	0.21	-2.23	
4,289.0	12.00	351.70	4,223.9	632.5	-110.6	637.4	0.86	-0.85	-0.64	
4,383.0	12.10	349.60	4,315.9	651.9	-113.8	656.8	0.48	0.11	-2.23	
4,477.0	12.40	349.30	4,407.7	671.5	-117.5	676.6	0.33	0.32	-0.32	

<b>Company:</b>	Caerus Oil & Gas	<b>Local Co-ordinate Reference:</b>	Well BJU M33 FED 14A-33 496
<b>Project:</b>	Garfield County, CO	<b>TVD Reference:</b>	RKB @ 8431.0usft (H&P #329)
<b>Site:</b>	BJU M33 496 Pad	<b>MD Reference:</b>	RKB @ 8431.0usft (H&P #329)
<b>Well:</b>	BJU M33 FED 14A-33 496	<b>North Reference:</b>	True
<b>Wellbore:</b>	Wellbore #1	<b>Survey Calculation Method:</b>	Minimum Curvature
<b>Design:</b>	Wellbore #1	<b>Database:</b>	EDM 5000.1 Single User Db

Survey										
Measured Depth (usft)	Inclination (°)	Azimuth (°)	Vertical Depth (usft)	+N/-S (usft)	+E/-W (usft)	Vertical Section (usft)	Dogleg Rate (°/100usft)	Build Rate (°/100usft)	Turn Rate (°/100usft)	
4,571.0	13.50	353.00	4,499.3	692.3	-120.7	697.5	1.46	1.17	3.94	
4,666.0	14.20	354.40	4,591.6	714.9	-123.2	719.8	0.82	0.74	1.47	
4,760.0	12.90	353.10	4,682.9	736.8	-125.5	741.5	1.42	-1.38	-1.38	
4,854.0	14.40	351.70	4,774.3	758.8	-128.5	763.4	1.63	1.60	-1.49	
4,948.0	14.60	350.80	4,865.3	782.1	-132.1	786.7	0.32	0.21	-0.96	
5,043.0	13.70	351.10	4,957.4	805.0	-135.7	809.7	0.95	-0.95	0.32	
5,137.0	13.00	350.80	5,048.9	826.4	-139.1	831.2	0.75	-0.74	-0.32	
5,231.0	13.50	350.40	5,140.4	847.7	-142.7	852.5	0.54	0.53	-0.43	
5,326.0	13.60	350.10	5,232.7	869.6	-146.4	874.6	0.13	0.11	-0.32	
5,420.0	12.50	349.80	5,324.3	890.5	-150.1	895.7	1.17	-1.17	-0.32	
5,515.0	13.80	348.30	5,416.8	911.7	-154.3	917.2	1.41	1.37	-1.58	
5,610.0	13.80	349.80	5,509.1	934.0	-158.6	939.7	0.38	0.00	1.58	
5,704.0	13.20	350.00	5,600.5	955.6	-162.4	961.5	0.64	-0.64	0.21	
5,799.0	12.10	349.50	5,693.2	976.1	-166.1	982.2	1.16	-1.16	-0.53	
5,894.0	12.70	346.50	5,785.9	996.0	-170.4	1,002.5	0.93	0.63	-3.16	
5,988.0	13.10	344.30	5,877.6	1,016.3	-175.7	1,023.5	0.67	0.43	-2.34	
6,083.0	12.70	345.60	5,970.2	1,036.8	-181.2	1,044.7	0.52	-0.42	1.37	
6,178.0	12.70	347.10	6,062.8	1,057.1	-186.1	1,065.5	0.35	0.00	1.58	
6,273.0	11.90	350.30	6,155.7	1,076.9	-190.1	1,085.6	1.11	-0.84	3.37	
6,367.0	11.20	351.90	6,247.8	1,095.5	-193.0	1,104.3	0.82	-0.74	1.70	
6,462.0	10.50	352.70	6,341.1	1,113.2	-195.4	1,121.9	0.75	-0.74	0.84	
6,556.0	10.20	350.20	6,433.5	1,129.9	-197.9	1,138.6	0.57	-0.32	-2.66	
6,651.0	8.40	356.30	6,527.3	1,145.1	-199.8	1,153.7	2.16	-1.89	6.42	
6,745.0	7.50	0.20	6,620.4	1,158.1	-200.2	1,166.3	1.12	-0.96	4.15	
6,840.0	5.90	1.00	6,714.7	1,169.2	-200.1	1,176.9	1.69	-1.68	0.84	
6,935.0	5.10	4.00	6,809.3	1,178.3	-199.7	1,185.4	0.89	-0.84	3.16	
7,029.0	3.30	6.00	6,903.0	1,185.2	-199.1	1,191.8	1.92	-1.91	2.13	
7,124.0	2.60	1.00	6,997.9	1,190.0	-198.8	1,196.4	0.78	-0.74	-5.26	
7,218.0	1.30	345.90	7,091.8	1,193.2	-199.0	1,199.5	1.48	-1.38	-16.06	
7,313.0	1.20	324.60	7,186.8	1,195.1	-199.9	1,201.5	0.50	-0.11	-22.42	
7,407.0	1.20	310.70	7,280.8	1,196.5	-201.2	1,203.3	0.31	0.00	-14.79	
7,502.0	1.10	310.70	7,375.8	1,197.7	-202.6	1,204.9	0.11	-0.11	0.00	
7,596.0	1.10	298.20	7,469.8	1,198.8	-204.1	1,206.3	0.25	0.00	-13.30	
7,691.0	1.30	300.40	7,564.7	1,199.7	-205.9	1,207.7	0.22	0.21	2.32	
7,786.0	1.30	291.40	7,659.7	1,200.7	-207.8	1,209.2	0.21	0.00	-9.47	
7,880.0	1.20	288.50	7,753.7	1,201.4	-209.7	1,210.4	0.13	-0.11	-3.09	
7,974.0	1.40	291.30	7,847.7	1,202.1	-211.7	1,211.7	0.22	0.21	2.98	
8,069.0	0.30	206.70	7,942.7	1,202.3	-212.9	1,212.3	1.48	-1.16	-89.05	
8,164.0	0.70	169.80	8,037.7	1,201.5	-212.9	1,211.5	0.52	0.42	-38.84	
8,258.0	0.50	153.10	8,131.7	1,200.6	-212.6	1,210.5	0.28	-0.21	-17.77	
8,353.0	0.30	170.00	8,226.7	1,200.0	-212.4	1,209.9	0.24	-0.21	17.79	
8,448.0	0.50	185.20	8,321.7	1,199.3	-212.4	1,209.2	0.24	0.21	16.00	
8,542.0	0.40	256.10	8,415.7	1,198.8	-212.7	1,208.9	0.56	-0.11	75.43	

<b>Company:</b>	Caerus Oil & Gas	<b>Local Co-ordinate Reference:</b>	Well BJU M33 FED 14A-33 496
<b>Project:</b>	Garfield County, CO	<b>TVD Reference:</b>	RKB @ 8431.0usft (H&P #329)
<b>Site:</b>	BJU M33 496 Pad	<b>MD Reference:</b>	RKB @ 8431.0usft (H&P #329)
<b>Well:</b>	BJU M33 FED 14A-33 496	<b>North Reference:</b>	True
<b>Wellbore:</b>	Wellbore #1	<b>Survey Calculation Method:</b>	Minimum Curvature
<b>Design:</b>	Wellbore #1	<b>Database:</b>	EDM 5000.1 Single User Db

Survey										
Measured Depth (usft)	Inclination (°)	Azimuth (°)	Vertical Depth (usft)	+N/-S (usft)	+E/-W (usft)	Vertical Section (usft)	Dogleg Rate (°/100usft)	Build Rate (°/100usft)	Turn Rate (°/100usft)	
8,637.0	0.40	252.30	8,510.7	1,198.6	-213.4	1,208.9	0.03	0.00		-4.00
8,731.0	0.80	255.50	8,604.6	1,198.4	-214.3	1,208.9	0.43	0.43		3.40
8,826.0	0.70	248.00	8,699.6	1,198.0	-215.5	1,208.9	0.15	-0.11		-7.89
8,920.0	1.10	250.40	8,793.6	1,197.5	-216.9	1,208.8	0.43	0.43		2.55
9,015.0	1.20	252.30	8,888.6	1,196.9	-218.7	1,208.7	0.11	0.11		2.00
9,109.0	1.00	247.50	8,982.6	1,196.2	-220.4	1,208.6	0.23	-0.21		-5.11
9,204.0	1.10	249.20	9,077.6	1,195.6	-222.0	1,208.5	0.11	0.11		1.79
9,298.0	1.60	236.10	9,171.5	1,194.6	-223.9	1,208.1	0.62	0.53		-13.94
9,392.0	1.30	238.20	9,265.5	1,193.3	-225.9	1,207.4	0.32	-0.32		2.23
9,487.0	0.70	228.90	9,360.5	1,192.3	-227.3	1,206.9	0.65	-0.63		-9.79
9,581.0	1.20	228.80	9,454.5	1,191.3	-228.5	1,206.2	0.53	0.53		-0.11
9,676.0	1.40	235.40	9,549.5	1,190.0	-230.2	1,205.5	0.26	0.21		6.95
9,770.0	1.70	234.30	9,643.4	1,188.5	-232.3	1,204.7	0.32	0.32		-1.17
9,865.0	2.00	222.30	9,738.4	1,186.5	-234.5	1,203.4	0.51	0.32		-12.63
9,959.0	2.00	227.30	9,832.3	1,184.1	-236.8	1,201.8	0.19	0.00		5.32
10,054.0	2.10	223.80	9,927.3	1,181.8	-239.2	1,200.3	0.17	0.11		-3.68
10,148.0	2.40	225.90	10,021.2	1,179.1	-241.9	1,198.5	0.33	0.32		2.23
10,243.0	2.40	228.80	10,116.1	1,176.4	-244.8	1,196.8	0.13	0.00		3.05
10,337.0	2.40	231.10	10,210.0	1,173.9	-247.8	1,195.2	0.10	0.00		2.45
10,432.0	3.20	238.90	10,304.9	1,171.3	-251.6	1,193.8	0.93	0.84		8.21
10,527.0	4.00	240.20	10,399.7	1,168.3	-256.8	1,192.4	0.85	0.84		1.37
10,621.0	5.20	239.80	10,493.4	1,164.5	-263.3	1,190.7	1.28	1.28		-0.43
10,715.0	6.50	237.20	10,586.9	1,159.5	-271.4	1,188.3	1.41	1.38		-2.77
10,810.0	6.70	237.50	10,681.3	1,153.6	-280.6	1,185.3	0.21	0.21		0.32
10,904.0	7.10	240.30	10,774.6	1,147.8	-290.3	1,182.6	0.56	0.43		2.98
10,998.0	7.90	243.30	10,867.8	1,142.0	-301.1	1,180.2	0.95	0.85		3.19
11,093.0	7.70	243.00	10,961.9	1,136.2	-312.6	1,178.0	0.21	-0.21		-0.32
11,187.0	8.40	243.60	11,055.0	1,130.2	-324.4	1,175.7	0.75	0.74		0.64
11,251.0	8.70	243.70	11,118.3	1,126.0	-332.9	1,174.2	0.47	0.47		0.16
<b>TD @ 11311.0' MD / 11177.6' TVD</b>										
11,311.0	8.70	243.70	11,177.6	1,122.0	-341.0	1,172.7	0.00	0.00		0.00

Design Annotations					
Measured Depth (usft)	Vertical Depth (usft)	Local Coordinates		Comment	
		+N/-S (usft)	+E/-W (usft)		
120.0	120.0	0.6	-0.4	Tie-in @ 120.0' MD / 120.0' TVD	
11,311.0	11,177.6	1,122.0	-341.0	TD @ 11311.0' MD / 11177.6' TVD	