

# PDC Energy Inc. DJ Basin



HEN 08N  
 Hen Pad  
 North American Datum 1983 , US State Plane 1983, Colorado Northern Zone  
 Ground Elevation: 4779.0  
 +N/-S +E/-W Northing Easting Latitude Longitude  
 0.0 0.0 1363731.40 3258632.10 40.328130 -104.572340  
 P272 - RKB 28.5' WELL @ 4807.5ft (P272 - RKB 28.5')

Hen Pad  
 HEN 08N  
 HEN 08N Final Surveys  
 11:03, November 28 2023



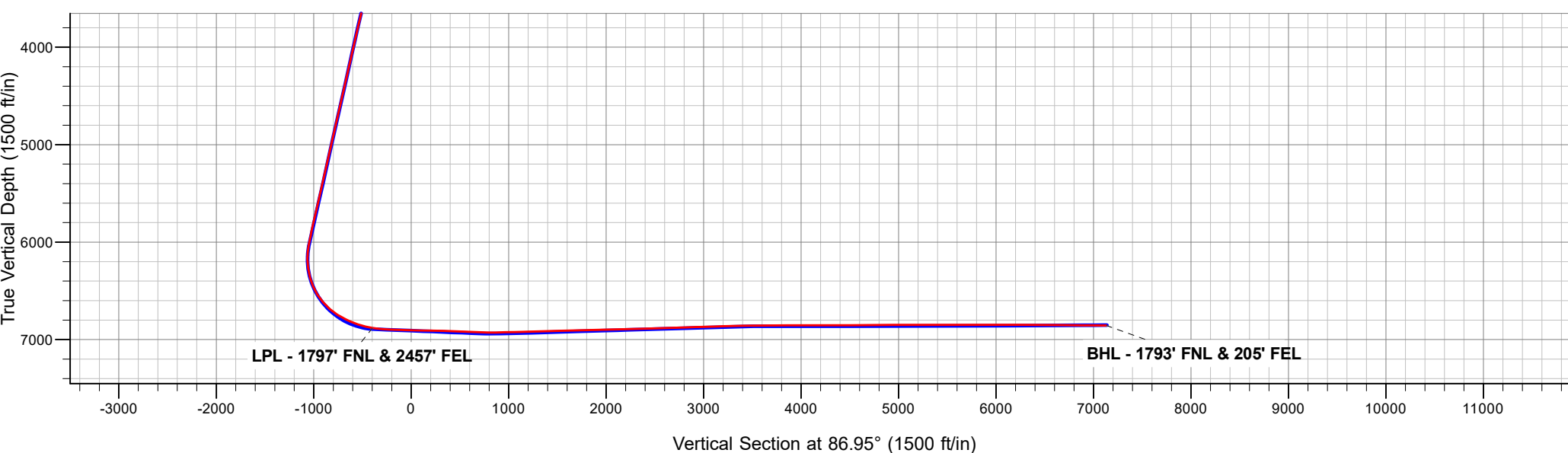
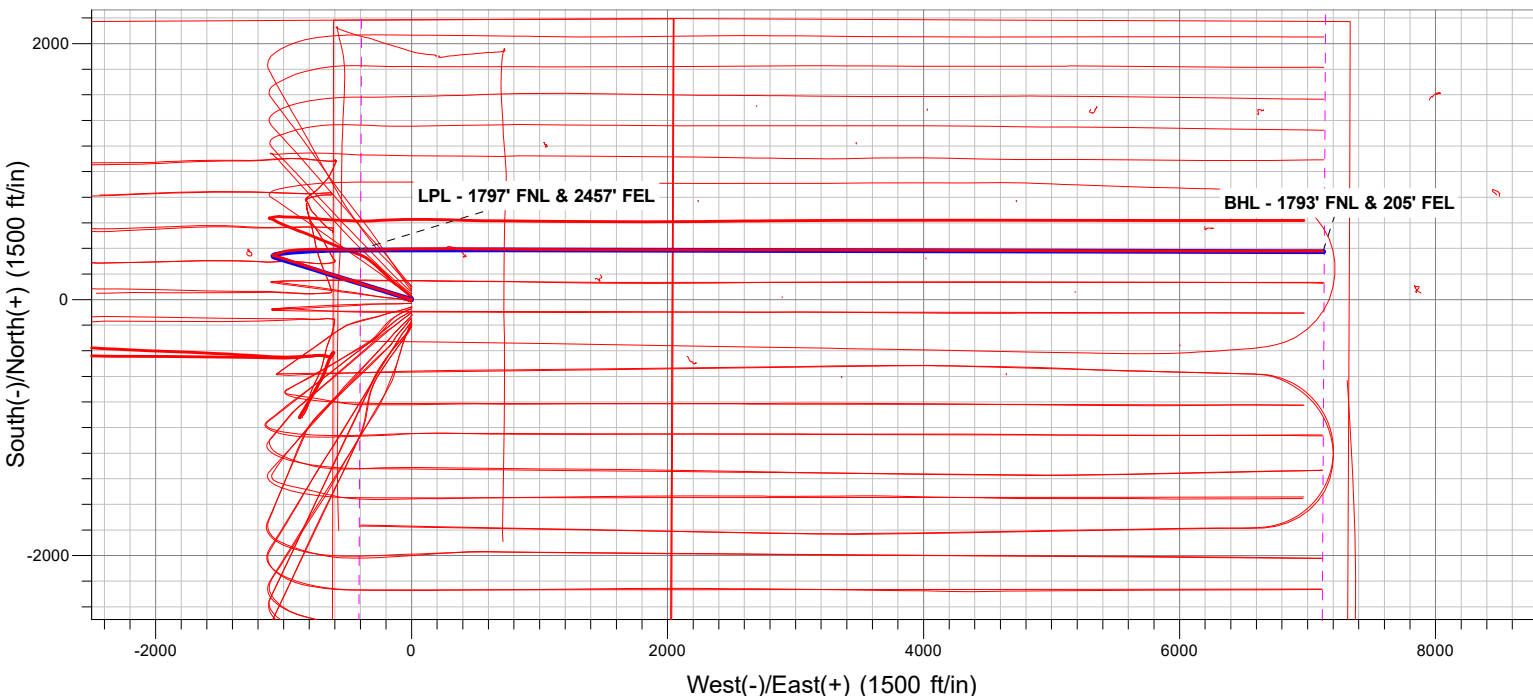
Azimuths to True North  
 Magnetic North: 7.68°

Magnetic Field  
 Strength: 51706.7nT  
 Dip Angle: 66.58°  
 Date: 08/24/2023  
 Model: HRGM

**ANNOTATIONS**

MD	TVD	Annotation
7369.0	6880.4	LPL - 1797' FNL & 2457' FEL
14912.0	6855.6	BHL - 1793' FNL & 205' FEL

**FINAL SURVEY**  
**Projected Bottom Hole Location**  
**14912' MD / 6855.6' TVD**  
**89.48° INC / 89.99° AZM**  
**1793' FNL / 205' FEL**



# **PDC Energy Inc. DJ Basin**

**SEC.8-T4N-R64W**

**Hen Pad**

**HEN 08N**

**HEN 08N**

**Design: HEN 08N Final Surveys**

## **Survey Report - Geographic**

**28 November, 2023**

# Ensign

## Survey Report - Geographic

<b>Company:</b> PDC Energy Inc. DJ Basin	<b>Local Co-ordinate Reference:</b> Well HEN 08N
<b>Project:</b> SEC.8-T4N-R64W	<b>TVD Reference:</b> WELL @ 4807.5ft (P272 - RKB 28.5')
<b>Site:</b> Hen Pad	<b>MD Reference:</b> WELL @ 4807.5ft (P272 - RKB 28.5')
<b>Well:</b> HEN 08N	<b>North Reference:</b> True
<b>Wellbore:</b> HEN 08N	<b>Survey Calculation Method:</b> Minimum Curvature
<b>Design:</b> HEN 08N Final Surveys	<b>Database:</b> US_EDM

<b>Project</b> SEC.8-T4N-R64W, Weld County, Colorado			
<b>Map System:</b> US State Plane 1983	<b>System Datum:</b> Mean Sea Level		
<b>Geo Datum:</b> North American Datum 1983			
<b>Map Zone:</b> Colorado Northern Zone	Using geodetic scale factor		

<b>Site</b> Hen Pad			
<b>Site Position:</b>	<b>Northing:</b> 1,363,685.50 usft	<b>Latitude:</b> 40.328004	
<b>From:</b> Lat/Long	<b>Easting:</b> 3,258,631.47 usft	<b>Longitude:</b> -104.572344	
<b>Position Uncertainty:</b> 0.0 ft	<b>Slot Radius:</b> 13-3/16 "	<b>Grid Convergence:</b> 0.60 °	

<b>Well</b> HEN 08N			
<b>Well Position</b>	<b>+N/-S</b> 0.0 ft	<b>Northing:</b> 1,363,731.40 usft	<b>Latitude:</b> 40.328130
	<b>+E/-W</b> 0.0 ft	<b>Easting:</b> 3,258,632.10 usft	<b>Longitude:</b> -104.572340
<b>Position Uncertainty</b> 0.0 ft		<b>Wellhead Elevation:</b> ft	<b>Ground Level:</b> 4,779.0 ft

<b>Wellbore</b> HEN 08N					
Magnetics	Model Name	Sample Date	Declination (°)	Dip Angle (°)	Field Strength (nT)
	HRGM	08/24/2023	7.68	66.58	51,706.72641437

<b>Design</b> HEN 08N Final Surveys					
<b>Audit Notes:</b>					
<b>Version:</b> 1.0	<b>Phase:</b> ACTUAL	<b>Tie On Depth:</b> 0.0			
Vertical Section:	Depth From (TVD) (ft)	+N/-S (ft)	+E/-W (ft)	Direction (°)	
	0.0	0.0	0.0	86.95	

<b>Survey Program</b> Date 11/28/2023					
From (ft)	To (ft)	Survey (Wellbore)	Tool Name	Description	
159.5	14,912.0	Survey #1 (HEN 08N)	MWD	MWD - Standard	

<b>Survey</b>									
Measured Depth (ft)	Inclination (°)	Azimuth (°)	Vertical Depth (ft)	+N/-S (ft)	+E/-W (ft)	Map Northing (usft)	Map Easting (usft)	Latitude	Longitude
0.0	0.00	0.00	0.0	0.0	0.0	1,363,731.40	3,258,632.10	40.328130	-104.572340
159.5	1.23	341.67	159.5	1.6	-0.5	1,363,733.02	3,258,631.55	40.328135	-104.572342
249.5	1.23	351.87	249.5	3.5	-1.0	1,363,734.88	3,258,631.09	40.328140	-104.572344
340.5	0.26	279.98	340.5	4.5	-1.3	1,363,735.88	3,258,630.73	40.328142	-104.572345
456.5	0.70	217.05	456.5	4.0	-2.0	1,363,735.36	3,258,630.05	40.328141	-104.572347
545.5	1.06	221.62	545.4	2.9	-2.9	1,363,734.30	3,258,629.19	40.328138	-104.572351
629.5	1.32	233.39	629.4	1.8	-4.2	1,363,733.13	3,258,627.91	40.328135	-104.572355
715.5	2.11	241.30	715.4	0.4	-6.4	1,363,731.75	3,258,625.74	40.328131	-104.572363
801.5	1.76	249.21	801.3	-0.8	-9.0	1,363,730.50	3,258,623.13	40.328128	-104.572372
888.5	0.18	283.32	888.3	-1.2	-10.4	1,363,730.04	3,258,621.75	40.328127	-104.572377
977.5	0.53	50.40	977.3	-1.0	-10.2	1,363,730.34	3,258,621.93	40.328127	-104.572377
1,066.5	0.88	329.37	1,066.3	-0.1	-10.2	1,363,731.19	3,258,621.89	40.328130	-104.572377

# Ensign

## Survey Report - Geographic

<b>Company:</b>	PDC Energy Inc. DJ Basin	<b>Local Co-ordinate Reference:</b>	Well HEN 08N
<b>Project:</b>	SEC.8-T4N-R64W	<b>TVD Reference:</b>	WELL @ 4807.5ft (P272 - RKB 28.5')
<b>Site:</b>	Hen Pad	<b>MD Reference:</b>	WELL @ 4807.5ft (P272 - RKB 28.5')
<b>Well:</b>	HEN 08N	<b>North Reference:</b>	True
<b>Wellbore:</b>	HEN 08N	<b>Survey Calculation Method:</b>	Minimum Curvature
<b>Design:</b>	HEN 08N Final Surveys	<b>Database:</b>	US_EDM

Survey										
Measured Depth (ft)	Inclination (°)	Azimuth (°)	Vertical Depth (ft)	+N/-S (ft)	+E/-W (ft)	Map Northing (usft)	Map Easting (usft)	Latitude	Longitude	
1,151.5	2.64	296.32	1,151.3	1.3	-12.3	1,363,732.59	3,258,619.79	40.328134	-104.572384	
1,237.5	3.69	295.62	1,237.1	3.4	-16.6	1,363,734.62	3,258,615.50	40.328139	-104.572400	
1,322.5	4.92	296.50	1,321.9	6.2	-22.3	1,363,737.37	3,258,609.74	40.328147	-104.572420	
1,407.5	7.39	292.46	1,406.4	9.9	-30.6	1,363,741.00	3,258,601.39	40.328157	-104.572450	
1,495.5	9.94	288.76	1,493.4	14.5	-43.0	1,363,745.48	3,258,588.91	40.328170	-104.572495	
1,582.5	11.17	287.01	1,578.9	19.4	-58.2	1,363,750.20	3,258,573.70	40.328183	-104.572549	
1,656.5	11.96	286.30	1,651.4	23.7	-72.4	1,363,754.30	3,258,559.44	40.328195	-104.572600	
1,762.0	11.78	286.97	1,754.7	29.9	-93.2	1,363,760.29	3,258,538.58	40.328212	-104.572675	
1,827.0	11.48	287.59	1,818.3	33.8	-105.7	1,363,764.05	3,258,526.03	40.328223	-104.572719	
1,925.0	12.86	289.37	1,914.1	40.3	-125.3	1,363,770.41	3,258,506.38	40.328241	-104.572790	
2,022.0	13.07	287.41	2,008.7	47.2	-146.0	1,363,777.05	3,258,485.66	40.328260	-104.572864	
2,119.0	13.49	287.82	2,103.1	53.9	-167.2	1,363,783.58	3,258,464.36	40.328278	-104.572940	
2,216.0	13.42	288.50	2,197.4	61.0	-188.6	1,363,790.38	3,258,442.84	40.328297	-104.573017	
2,314.0	13.35	288.64	2,292.7	68.2	-210.1	1,363,797.38	3,258,421.26	40.328317	-104.573094	
2,408.0	13.49	287.42	2,384.2	74.9	-230.9	1,363,803.92	3,258,400.45	40.328336	-104.573168	
2,505.0	12.75	284.71	2,478.6	81.0	-252.0	1,363,809.80	3,258,379.24	40.328353	-104.573244	
2,602.0	13.18	284.84	2,573.2	86.6	-273.1	1,363,815.13	3,258,358.14	40.328368	-104.573320	
2,699.0	13.46	286.05	2,667.6	92.6	-294.6	1,363,820.86	3,258,336.54	40.328384	-104.573397	
2,796.0	13.70	285.49	2,761.8	98.7	-316.5	1,363,826.82	3,258,314.56	40.328401	-104.573476	
2,893.0	13.97	287.41	2,856.0	105.3	-338.8	1,363,833.15	3,258,292.25	40.328419	-104.573555	
2,990.0	13.77	286.91	2,950.2	112.2	-361.0	1,363,839.78	3,258,269.96	40.328438	-104.573635	
3,087.0	14.05	288.38	3,044.4	119.2	-383.2	1,363,846.62	3,258,247.67	40.328457	-104.573715	
3,184.0	13.74	287.59	3,138.5	126.4	-405.4	1,363,853.58	3,258,225.45	40.328477	-104.573794	
3,282.0	13.52	288.11	3,233.8	133.5	-427.4	1,363,860.43	3,258,203.39	40.328497	-104.573873	
3,378.0	13.88	287.48	3,327.0	140.5	-449.0	1,363,867.15	3,258,181.67	40.328516	-104.573951	
3,476.0	13.51	288.26	3,422.2	147.6	-471.1	1,363,874.03	3,258,159.52	40.328535	-104.574030	
3,574.0	13.47	288.13	3,517.5	154.7	-492.8	1,363,880.94	3,258,137.73	40.328555	-104.574108	
3,671.0	12.94	287.93	3,612.0	161.6	-513.9	1,363,887.58	3,258,116.59	40.328574	-104.574183	
3,767.0	13.87	287.36	3,705.4	168.3	-535.1	1,363,894.10	3,258,095.31	40.328592	-104.574259	
3,864.0	13.93	286.94	3,799.5	175.2	-557.3	1,363,900.74	3,258,072.97	40.328611	-104.574339	
4,057.0	13.97	287.70	3,986.8	189.0	-601.8	1,363,914.13	3,258,028.42	40.328649	-104.574499	
4,154.0	12.95	287.43	4,081.2	195.9	-623.3	1,363,920.72	3,258,006.82	40.328668	-104.574576	
4,251.0	13.89	288.56	4,175.5	202.8	-644.7	1,363,927.45	3,257,985.34	40.328687	-104.574653	
4,349.0	13.77	288.65	4,270.7	210.3	-666.9	1,363,934.69	3,257,963.07	40.328707	-104.574732	
4,447.0	13.56	288.80	4,365.9	217.7	-688.8	1,363,941.90	3,257,941.06	40.328728	-104.574811	
4,544.0	13.64	290.29	4,460.2	225.4	-710.3	1,363,949.30	3,257,919.49	40.328749	-104.574888	
4,641.0	13.91	287.84	4,554.4	232.9	-732.1	1,363,956.61	3,257,897.59	40.328769	-104.574966	
4,738.0	13.56	287.97	4,648.6	240.0	-754.1	1,363,963.46	3,257,875.60	40.328789	-104.575045	
4,837.0	13.94	288.25	4,744.8	247.3	-776.4	1,363,970.54	3,257,853.16	40.328809	-104.575125	
4,935.0	13.78	288.58	4,839.9	254.7	-798.7	1,363,977.72	3,257,830.81	40.328829	-104.575205	
5,032.0	13.91	288.25	4,934.1	262.0	-820.7	1,363,984.82	3,257,808.72	40.328849	-104.575284	
5,130.0	13.87	288.67	5,029.2	269.5	-843.0	1,363,992.04	3,257,786.33	40.328870	-104.575364	
5,228.0	13.87	287.91	5,124.4	276.9	-865.3	1,363,999.18	3,257,763.95	40.328890	-104.575444	
5,326.0	13.83	287.74	5,219.5	284.0	-887.7	1,364,006.12	3,257,741.54	40.328910	-104.575524	
5,424.0	13.47	286.94	5,314.8	290.9	-909.8	1,364,012.79	3,257,719.40	40.328929	-104.575603	
5,522.0	13.77	288.57	5,410.0	298.0	-931.7	1,364,019.60	3,257,697.35	40.328948	-104.575682	
5,617.0	13.28	287.20	5,502.4	304.8	-952.9	1,364,026.20	3,257,676.14	40.328967	-104.575758	
5,715.0	13.61	288.22	5,597.7	311.7	-974.6	1,364,032.91	3,257,654.36	40.328986	-104.575836	
5,812.0	13.69	287.57	5,691.9	318.8	-996.4	1,364,039.71	3,257,632.51	40.329005	-104.575914	
5,910.0	13.66	288.10	5,787.2	325.9	-1,018.4	1,364,046.58	3,257,610.38	40.329024	-104.575993	
6,007.0	12.98	287.16	5,881.6	332.6	-1,039.7	1,364,053.13	3,257,589.02	40.329043	-104.576069	
6,104.0	13.16	287.93	5,976.0	339.3	-1,060.6	1,364,059.52	3,257,568.04	40.329061	-104.576144	
6,200.0	8.11	286.23	6,070.4	344.5	-1,077.5	1,364,064.60	3,257,551.07	40.329076	-104.576205	
6,297.0	0.07	221.48	6,167.0	346.4	-1,084.2	1,364,066.40	3,257,544.43	40.329081	-104.576229	
6,394.0	7.81	70.04	6,263.7	348.6	-1,078.0	1,364,068.68	3,257,550.58	40.329087	-104.576207	

# Ensign

## Survey Report - Geographic

<b>Company:</b>	PDC Energy Inc. DJ Basin	<b>Local Co-ordinate Reference:</b>	Well HEN 08N
<b>Project:</b>	SEC.8-T4N-R64W	<b>TVD Reference:</b>	WELL @ 4807.5ft (P272 - RKB 28.5')
<b>Site:</b>	Hen Pad	<b>MD Reference:</b>	WELL @ 4807.5ft (P272 - RKB 28.5')
<b>Well:</b>	HEN 08N	<b>North Reference:</b>	True
<b>Wellbore:</b>	HEN 08N	<b>Survey Calculation Method:</b>	Minimum Curvature
<b>Design:</b>	HEN 08N Final Surveys	<b>Database:</b>	US_EDM

Survey										
Measured Depth (ft)	Inclination (°)	Azimuth (°)	Vertical Depth (ft)	+N/-S (ft)	+E/-W (ft)	Map Northing (usft)	Map Easting (usft)	Latitude	Longitude	
6,492.0	15.42	69.52	6,359.7	355.4	-1,059.5	1,364,075.71	3,257,568.99	40.329106	-104.576140	
6,590.0	24.18	73.21	6,451.8	365.8	-1,028.0	1,364,086.42	3,257,600.36	40.329134	-104.576027	
6,688.0	31.64	77.13	6,538.3	377.4	-983.7	1,364,098.42	3,257,644.58	40.329166	-104.575868	
6,786.0	41.09	84.64	6,617.2	386.1	-926.4	1,364,107.78	3,257,701.76	40.329190	-104.575663	
6,883.0	49.41	87.96	6,685.4	390.4	-857.7	1,364,112.79	3,257,770.39	40.329202	-104.575417	
6,980.0	56.77	89.12	6,743.6	392.3	-780.2	1,364,115.54	3,257,847.84	40.329207	-104.575139	
7,077.0	64.78	91.20	6,791.0	392.0	-695.7	1,364,116.13	3,257,932.41	40.329206	-104.574835	
7,174.0	70.13	90.55	6,828.2	390.7	-606.1	1,364,115.71	3,258,021.96	40.329202	-104.574514	
7,271.0	72.69	91.94	6,859.1	388.7	-514.2	1,364,114.66	3,258,113.88	40.329197	-104.574185	
7,369.0	82.17	89.58	6,880.4	387.5	-418.7	1,364,114.43	3,258,209.41	40.329194	-104.573842	
<b>LPL - 1797' FNL &amp; 2457' FEL</b>										
7,467.0	85.06	88.80	6,891.3	388.8	-321.3	1,364,116.83	3,258,306.75	40.329197	-104.573493	
7,564.0	87.11	88.98	6,897.9	390.7	-224.6	1,364,119.71	3,258,403.47	40.329203	-104.573146	
7,661.0	88.53	88.36	6,901.6	393.0	-127.7	1,364,122.98	3,258,500.34	40.329209	-104.572798	
7,759.0	88.91	88.98	6,903.8	395.2	-29.7	1,364,126.27	3,258,598.26	40.329215	-104.572447	
7,856.0	88.91	88.97	6,905.6	397.0	67.3	1,364,129.02	3,258,695.20	40.329220	-104.572099	
7,953.0	88.95	90.04	6,907.4	397.8	164.2	1,364,130.88	3,258,792.16	40.329222	-104.571751	
8,052.0	88.85	90.10	6,909.3	397.7	263.2	1,364,131.79	3,258,891.13	40.329222	-104.571396	
8,150.0	87.91	90.84	6,912.1	396.9	361.2	1,364,132.01	3,258,989.08	40.329219	-104.571045	
8,246.0	87.90	90.89	6,915.6	395.4	457.1	1,364,131.57	3,259,085.01	40.329215	-104.570701	
8,345.0	88.17	89.82	6,919.0	394.8	556.0	1,364,131.99	3,259,183.95	40.329214	-104.570346	
8,442.0	87.72	90.82	6,922.5	394.3	653.0	1,364,132.46	3,259,280.88	40.329212	-104.569998	
8,539.0	87.78	90.69	6,926.3	393.0	749.9	1,364,132.20	3,259,377.80	40.329209	-104.569651	
8,637.0	91.21	90.41	6,927.2	392.1	847.9	1,364,132.28	3,259,475.78	40.329206	-104.569299	
8,735.0	91.45	89.73	6,924.9	391.9	945.8	1,364,133.19	3,259,573.74	40.329206	-104.568948	
8,832.0	91.29	90.42	6,922.6	391.8	1,042.8	1,364,134.08	3,259,670.70	40.329205	-104.568600	
8,929.0	91.58	90.10	6,920.1	391.4	1,139.8	1,364,134.65	3,259,767.67	40.329204	-104.568252	
9,027.0	91.39	90.35	6,917.6	391.0	1,237.7	1,364,135.29	3,259,865.63	40.329203	-104.567901	
9,126.0	91.28	90.29	6,915.3	390.4	1,336.7	1,364,135.77	3,259,964.60	40.329202	-104.567546	
9,224.0	91.28	90.27	6,913.1	390.0	1,434.7	1,364,136.32	3,260,062.57	40.329200	-104.567195	
9,323.0	93.36	89.84	6,909.1	389.9	1,533.6	1,364,137.26	3,260,161.47	40.329200	-104.566840	
9,421.0	91.35	90.05	6,905.1	390.0	1,631.5	1,364,138.38	3,260,259.37	40.329200	-104.566489	
9,519.0	91.36	90.24	6,902.8	389.7	1,729.5	1,364,139.15	3,260,357.34	40.329200	-104.566137	
9,615.0	91.19	90.39	6,900.6	389.2	1,825.5	1,364,139.63	3,260,453.31	40.329198	-104.565793	
9,714.0	91.09	90.16	6,898.6	388.7	1,924.4	1,364,140.19	3,260,552.28	40.329197	-104.565438	
9,810.0	91.33	89.93	6,896.6	388.6	2,020.4	1,364,141.12	3,260,648.25	40.329197	-104.565094	
9,907.0	91.46	89.84	6,894.3	388.8	2,117.4	1,364,142.33	3,260,745.21	40.329197	-104.564746	
10,004.0	91.47	90.44	6,891.8	388.6	2,214.4	1,364,143.11	3,260,842.17	40.329196	-104.564398	
10,102.0	91.08	90.20	6,889.6	388.0	2,312.3	1,364,143.58	3,260,940.14	40.329195	-104.564047	
10,199.0	91.38	90.10	6,887.5	387.8	2,409.3	1,364,144.34	3,261,037.11	40.329194	-104.563699	
10,296.0	91.81	90.07	6,884.8	387.6	2,506.3	1,364,145.21	3,261,134.07	40.329194	-104.563351	
10,394.0	92.08	90.03	6,881.5	387.6	2,604.2	1,364,146.15	3,261,232.00	40.329193	-104.563000	
10,490.0	91.77	89.72	6,878.3	387.8	2,700.2	1,364,147.37	3,261,327.93	40.329194	-104.562656	
10,588.0	92.00	89.92	6,875.0	388.1	2,798.1	1,364,148.70	3,261,425.87	40.329195	-104.562305	
10,686.0	91.71	90.29	6,871.9	387.9	2,896.1	1,364,149.54	3,261,523.81	40.329194	-104.561953	
10,783.0	91.78	90.12	6,868.9	387.5	2,993.0	1,364,150.21	3,261,620.76	40.329193	-104.561605	
10,882.0	91.61	89.93	6,866.0	387.5	3,092.0	1,364,151.20	3,261,719.70	40.329193	-104.561251	
10,977.0	91.75	89.89	6,863.2	387.7	3,186.9	1,364,152.35	3,261,814.65	40.329194	-104.560910	
11,076.0	91.73	90.02	6,860.2	387.7	3,285.9	1,364,153.46	3,261,913.60	40.329194	-104.560555	
11,172.0	91.80	90.35	6,857.2	387.4	3,381.8	1,364,154.15	3,262,009.54	40.329193	-104.560211	
11,268.0	90.27	90.08	6,855.5	387.1	3,477.8	1,364,154.80	3,262,105.52	40.329192	-104.559867	
11,365.0	90.17	90.27	6,855.1	386.8	3,574.8	1,364,155.51	3,262,202.51	40.329191	-104.559519	
11,463.0	90.15	89.75	6,854.9	386.7	3,672.8	1,364,156.52	3,262,300.50	40.329191	-104.559167	
11,560.0	90.31	90.08	6,854.5	386.9	3,769.8	1,364,157.68	3,262,397.49	40.329191	-104.558819	
11,657.0	90.13	90.23	6,854.1	386.6	3,866.8	1,364,158.43	3,262,494.48	40.329190	-104.558471	

# Ensign

## Survey Report - Geographic

<b>Company:</b> PDC Energy Inc. DJ Basin	<b>Local Co-ordinate Reference:</b> Well HEN 08N
<b>Project:</b> SEC.8-T4N-R64W	<b>TVD Reference:</b> WELL @ 4807.5ft (P272 - RKB 28.5')
<b>Site:</b> Hen Pad	<b>MD Reference:</b> WELL @ 4807.5ft (P272 - RKB 28.5')
<b>Well:</b> HEN 08N	<b>North Reference:</b> True
<b>Wellbore:</b> HEN 08N	<b>Survey Calculation Method:</b> Minimum Curvature
<b>Design:</b> HEN 08N Final Surveys	<b>Database:</b> US_EDM

### Survey

Measured Depth (ft)	Inclination (°)	Azimuth (°)	Vertical Depth (ft)	+N/-S (ft)	+E/-W (ft)	Map Northing (usft)	Map Easting (usft)	Latitude	Longitude
11,756.0	90.35	90.36	6,853.7	386.1	3,965.8	1,364,158.96	3,262,593.47	40.329189	-104.558116
11,852.0	90.16	90.07	6,853.3	385.8	4,061.8	1,364,159.60	3,262,689.47	40.329188	-104.557772
11,948.0	90.65	89.72	6,852.6	385.9	4,157.8	1,364,160.78	3,262,785.45	40.329188	-104.557428
12,045.0	89.89	90.17	6,852.1	386.0	4,254.8	1,364,161.89	3,262,882.44	40.329189	-104.557080
12,144.0	90.31	90.50	6,851.9	385.4	4,353.8	1,364,162.35	3,262,981.43	40.329187	-104.556725
12,240.0	90.14	90.61	6,851.6	384.5	4,449.8	1,364,162.42	3,263,077.43	40.329184	-104.556381
12,335.0	90.14	90.57	6,851.3	383.5	4,544.8	1,364,162.44	3,263,172.42	40.329182	-104.556040
12,432.0	90.75	89.91	6,850.6	383.1	4,641.8	1,364,163.05	3,263,269.41	40.329181	-104.555692
12,528.0	90.30	90.40	6,849.7	382.9	4,737.8	1,364,163.79	3,263,365.40	40.329180	-104.555348
12,627.0	89.70	91.04	6,849.7	381.6	4,836.8	1,364,163.58	3,263,464.40	40.329176	-104.554993
12,725.0	90.02	90.02	6,849.9	380.7	4,934.8	1,364,163.70	3,263,562.39	40.329174	-104.554641
12,822.0	90.28	89.92	6,849.7	380.8	5,031.8	1,364,164.77	3,263,659.38	40.329174	-104.554293
12,919.0	90.20	89.84	6,849.3	381.0	5,128.8	1,364,165.98	3,263,756.37	40.329174	-104.553945
13,017.0	89.75	90.87	6,849.3	380.4	5,226.8	1,364,166.40	3,263,854.36	40.329173	-104.553594
13,115.0	90.05	89.82	6,849.5	379.8	5,324.8	1,364,166.84	3,263,952.35	40.329171	-104.553242
13,213.0	90.20	90.02	6,849.3	379.9	5,422.8	1,364,168.00	3,264,050.34	40.329171	-104.552891
13,312.0	89.88	90.12	6,849.2	379.8	5,521.8	1,364,168.91	3,264,149.33	40.329171	-104.552536
13,410.0	90.36	89.57	6,849.0	380.1	5,619.7	1,364,170.20	3,264,247.32	40.329172	-104.552184
13,505.0	90.07	90.01	6,848.7	380.4	5,714.7	1,364,171.55	3,264,342.30	40.329172	-104.551844
13,602.0	90.05	90.26	6,848.5	380.2	5,811.7	1,364,172.33	3,264,439.30	40.329172	-104.551496
13,700.0	90.30	89.92	6,848.2	380.0	5,909.7	1,364,173.20	3,264,537.29	40.329171	-104.551144
13,797.0	89.93	90.41	6,848.1	379.7	6,006.7	1,364,173.94	3,264,634.28	40.329170	-104.550796
13,894.0	90.02	90.15	6,848.1	379.3	6,103.7	1,364,174.48	3,264,731.27	40.329169	-104.550448
13,990.0	89.99	89.99	6,848.1	379.2	6,199.7	1,364,175.37	3,264,827.26	40.329169	-104.550104
14,087.0	89.52	90.15	6,848.5	379.0	6,296.7	1,364,176.26	3,264,924.26	40.329168	-104.549756
14,183.0	89.67	89.71	6,849.2	379.2	6,392.7	1,364,177.38	3,265,020.24	40.329169	-104.549412
14,282.0	89.50	89.92	6,849.9	379.5	6,491.7	1,364,178.74	3,265,119.23	40.329169	-104.549057
14,377.0	89.46	90.05	6,850.8	379.5	6,586.7	1,364,179.76	3,265,214.21	40.329169	-104.548716
14,475.0	89.31	90.45	6,851.8	379.1	6,684.7	1,364,180.36	3,265,312.20	40.329168	-104.548365
14,572.0	89.63	90.09	6,852.7	378.6	6,781.7	1,364,180.91	3,265,409.19	40.329167	-104.548017
14,668.0	89.47	89.78	6,853.5	378.7	6,877.7	1,364,182.03	3,265,505.18	40.329167	-104.547672
14,766.0	89.54	89.89	6,854.3	379.0	6,975.7	1,364,183.33	3,265,603.16	40.329168	-104.547321
14,863.0	89.48	89.99	6,855.1	379.1	7,072.7	1,364,184.45	3,265,700.14	40.329168	-104.546973
14,912.0	89.48	89.99	6,855.6	379.1	7,121.7	1,364,184.97	3,265,749.14	40.329168	-104.546797

**BHL - 1793' FNL & 205' FEL**

### Design Annotations

Measured Depth (ft)	Vertical Depth (ft)	Local Coordinates		Comment
		+N/-S (ft)	+E/-W (ft)	
7,369.0	6,880.4	387.5	-418.7	LPL - 1797' FNL & 2457' FEL
14,912.0	6,855.6	379.1	7,121.7	BHL - 1793' FNL & 205' FEL

Checked By: \_\_\_\_\_ Approved By: \_\_\_\_\_ Date: \_\_\_\_\_