

FIGURES

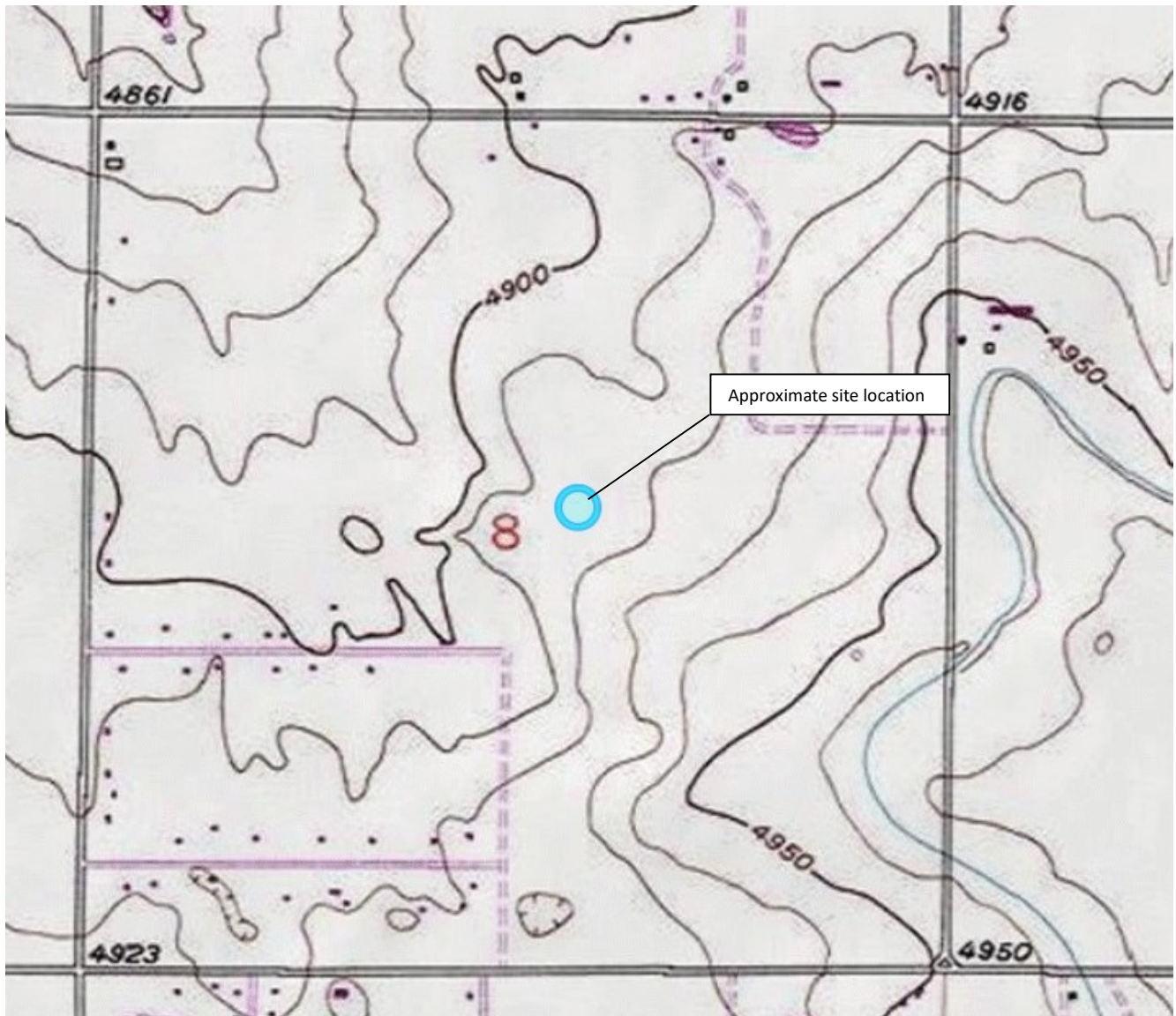


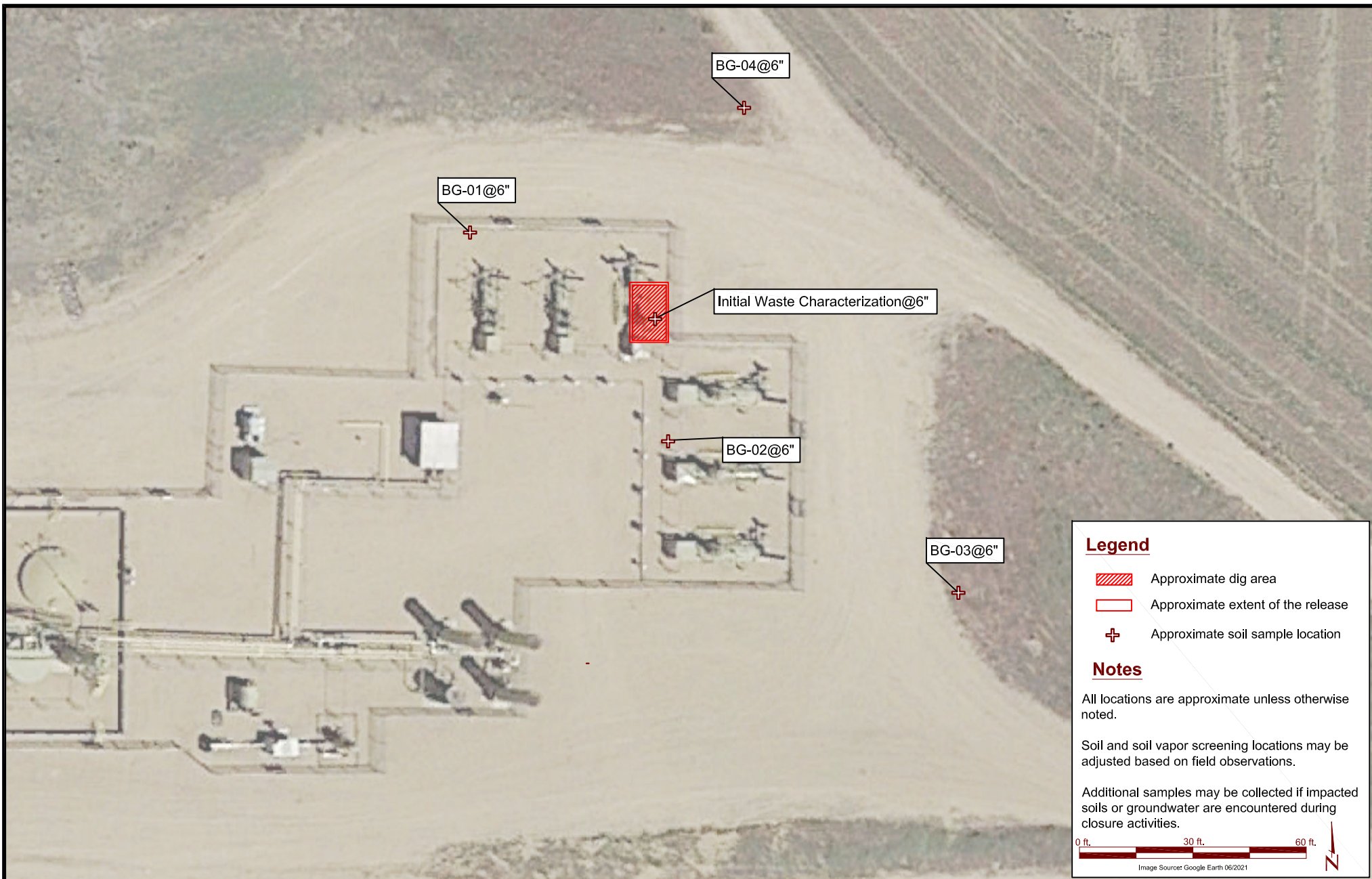
Figure 1

Site Location Map
Kerr-McGee Oil and Gas Onshore LP
Sater 24C,40N,24N,25C-5HZ O SA Facility
SWNE Sec. 8-T2N-R67W
Weld County, Colorado



Source: USGS 7.5 Minute Topographic Map, Gowanda, CO Quadrangle

Drawn By: AM Date: 12/20/2023



DATE: December 20, 2023

DESIGNED BY: D. Coloccia

DRAWN BY: A. McNall



EAGLE
ENVIRONMENTAL
CONSULTING, LLC

8000 W 44th Ave, Wheat Ridge, CO 80033
Ph: 303-433-0479 • F: 303-325-5449

Kerr-McGee Oil and Gas Onshore LP
Sater 24C,40N,24N,25C-5HZ O SA Production Facility
SWNE Sec. 8-T2N-R67W
Weld County, Colorado

Screening and Sample
Location Map

Figure
2

TABLES

TABLE 1
SATER 24C,40N,24N,25C-5HZ O SA
SOIL SAMPLE FIELD DATA SUMMARY TABLE
KERR-McGEE OIL AND GAS ONSHORE LP

Sample Location	Date	Approximate Depth (feet bgs)	PID (ppm-v)	Visual Observation	Olfactory Observation	Latitude, Longitude	Submitted for Lab Analysis (Y/N)
Tank Battery Soil Samples							
Initial Waste Characterization @ 6"	12/19/23	0.5	1223.3	HC Staining	HC Odor	40.1534030688436, -104.912929520732	Y
Background Soil Samples							
BG-01 @ 6"	12/19/23	0.5	14.9	N/S	N/O	40.1534630200462, -104.913104188408	Y
BG-02 @ 6"	12/19/23	0.5	17.9	N/S	N/O	40.1533182746577, -104.912925153623	Y
BG-03 @ 6"	12/19/23	0.5	4.3	N/S	N/O	40.1532027400061, -104.912645654252	Y
BG-04 @ 6"	12/19/23	0.5	7.7	N/S	N/O	40.1535507897207, -104.912842944053	Y

bgs = below ground surface

N/S = No Staining

PID = photoionization detector

N/O = No Odor

ppm-v = parts per million by volume

HC = hydrocarbon

BOLD = exceeds ECMC Table 915-1 Cleanup Concentrations

TABLE 2
SATER 24C,40N,24N,25C-5HZ O SA
SOIL SAMPLE RESULTS SUMMARY TABLE - VOCs
KERR-McGEE OIL AND GAS ONSHORE LP

Sample Location	Date	Benzene (mg/kg)	Toluene (mg/kg)	Ethylbenzene (mg/kg)	Total Xylenes (mg/kg)	TPH-GRO (mg/kg)	TPH-DRO (mg/kg)	TPH-ORO (mg/kg)	Naphthalene (mg/kg)	1,2,4-TMB (mg/kg)	1,3,5-TMB (mg/kg)
<i>ECMC standards for soil (mg/kg)</i> ⁽¹⁾		0.0026	0.69	0.78	9.9	500			0.0038	0.0081	0.0087
<i>ECMC standards for soil (mg/kg)</i> ⁽²⁾		1.2	490	5.8	58	500			2	30	27
Initial Waste Characterization @ 6"	12/19/23	116	427	74.6	616	11200	36900	12000	31.7	204	89.8

Notes:

⁽¹⁾ ECMC Table 915-1: Protection of Groundwater Soil Screening Level Concentrations, effective January 15, 2021

⁽²⁾ ECMC Table 915-1: Residential Soil Screening Level Concentrations, effective January 15, 2021

ECMC = Energy & Carbon Management Commission

< = Analytical result is less than the laboratory reporting limit

mg/kg = milligrams per kilogram

TPH-GRO = Total petroleum hydrocarbons - gasoline range organics

TPH-DRO = Total petroleum hydrocarbons - diesel range organics

TPH-ORO = Total petroleum hydrocarbons - oil range organics

TMB = Trimethylbenzene

TABLE 3
SATER 24C,40N,24N,25C-5HZ O SA
SOIL SAMPLE RESULTS SUMMARY TABLE - PAHs
KERR-McGEE OIL AND GAS ONSHORE LP

Sample Location	Date	1-Methyl-naphthalene (mg/kg)	2-Methyl-naphthalene (mg/kg)	Acenaphthene (mg/kg)	Anthracene (mg/kg)	Benzo(a)-anthracene (mg/kg)	Benzo(a)-pyrene (mg/kg)	Benzo(b)-fluoranthene (mg/kg)	Benzo(k)-fluoranthene (mg/kg)	Chrysene (mg/kg)	Dibenzo(a,h)-anthracene (mg/kg)	Fluoranthene (mg/kg)	Fluorene (mg/kg)	Ideno(1,2,3-cd)-pyrene (mg/kg)	Pyrene (mg/kg)
ECMC standards for soil (mg/kg) ⁽¹⁾		0.006	0.019	0.55	5.8	0.011	0.24	0.3	2.9	9	0.096	8.9	0.54	0.98	1.3
ECMC standards for soil (mg/kg) ⁽²⁾		18	24	360	1,800	1.1	0.11	1.1	11	110	0.11	240	240	1.1	180
Initial Waste Characterization @ 6"	12/19/23	62.4	89.0	6.39	0.518	0.134	<0.200	<0.200	<0.200	0.711	<0.200	0.228	9.19	<0.200	0.401

Notes:

⁽¹⁾ Standards are taken from ECMC Table 915-1: Protection of Groundwater Soil Screening Level Concentrations, effective January 15, 2021

⁽²⁾ Standards for soil are taken from ECMC Table 915-1: Residential Soil Screening Level Concentrations, effective January 15, 2021

ECMC = Energy & Carbon Management Commission

(<) = Analytical result is less than the indicated laboratory reporting limit

mg/kg = milligrams per kilogram

PAH = Polycyclic Aromatic Hydrocarbons

Values presented in **BOLD** contained concentrations exceeding ECMC Table 915-1 Cleanup Concentrations

ATTACHMENT A
FIELD NOTES AND PHOTOLOG

Tank Battery Closure Checklist 2

Additional Attachments (Optional)

Site Name & COGCC Facility Number

Sater 24C 40N 24N 25C-5

Remediation Project #

Date

12/19/2023

Site Information

Associated Wells

Location

Latitude

40.153301

Longitude

-104.913144

General Condition of Site

Active release
BG-01@6" & BG-02@6" were collected within the berm of the facility. BG-03@6" and BG-04@6" were collected just outside of the facility pad.

USCS Soil Type

Fine Sandy Loam / Fine Sndy Lm

Estimated Depth to Groundwater

<20'

Hydrocarbon Impacted Soils / Spills

Yes - active release

Salt Crusted Soils or Impacted Vegetation

None observed

Soil Samples

#	Sample Date	Sample Time	Soil Sample ID	PID Readings	Visual	Other Visual	Olfactory	Other Olfactory	Equipment Type	Other Equipment Type
R1	12/19/2023	01:30 PM	Initial waste characterization @ 6"	1223.3	HC Staining		HC Odor		Separator	
R2	12/19/2023	01:45 PM	BG-01 @ 6"	14.9	N.S		N.O		Background	
R3	12/19/2023	01:50 PM	BG-02 @ 6"	17.9	N.S		N.O		Background	
R4	12/19/2023	02:00 PM	BG-03 @ 6"	4.3	N.S		N.O		Background	
R5	12/19/2023	02:10 PM	BG-04 @ 6"	7.7	N.S		N.O		Background	

Photo(s)

R1 - P1



Looking northwest

R2 - P1



Looking east

R3 - P1



Looking north

R4 - P1



Looking northeast



Looking southwest

Other observations regarding tanks

Summary

Was impacted soil identified?	Yes - less than 10 cubic yards
Total number of soil samples field screened	5
Total number of soil samples collected	5
Highest PID Reading	1223.3
Total number of soil samples submitted to lab for analysis	5
Was groundwater encountered during the investigation?	No
Measured depth to groundwater	
Was remedial groundwater removal conducted?	
Date Groundwater was encountered	
Commencement date of removal	
Sheen on groundwater?	
Free product observed?	
Volume of groundwater removed prior to sampling	
Volume of groundwater removed post sampling	
Total volume of groundwater removed	
Total number of groundwater samples collected	
Total number of groundwater samples submitted to lab for analysis	

ATTACHMENT B
STATE NOTIFICATION

From: Ochoa, Ariana

Sent: Tuesday, December 19, 2023 1:06 PM

To: Kari.oakman@state.co.us; Jason Maxey <jmaxey@weldgov.com>; Roy Rudisill (rrudisill@co.weld.co.us) <rrudisill@co.weld.co.us>

Cc: Hamilton, Gregory <Gregory_Hamilton@oxy.com>; Scranton, Lynna <Lynna_Scranton@oxy.com>; Mickelson, Erik <Erik_Mickelson@oxy.com>; Rowley, Taylor <Taylor_Rowley@oxy.com>; Bugarin, Eve M <Eve_Bugarin@oxy.com>; Lytle, Andy <Andrew_Lytle@oxy.com>; Jobe, Don <Don_Jobe@oxy.com>; Grage, Mark <Mark_Grage@oxy.com>; Bartoszek, Jaron <Jaron_Bartoszek@oxy.com>; Brice, Jennifer <Jennifer_Brice@oxy.com>; Neely, Dewey (Platteville) <Dewey_Neely2@oxy.com>; Coleman, Julie <Julie_Coleman@oxy.com>; Riemer, Joseph <Joseph_Riemer@oxy.com>; Wells, Matt <Matthew_Wells@oxy.com>; Mathes, Robert <Robert_Mathes@oxy.com>; Hamlin, Mark G <Mark_Hamlin@oxy.com>; Wells, Matt <Matthew_Wells@oxy.com>

Subject: State Reportable Release 24 Hour Notification - SATER 24C,40N,24N,25C-5HZ O SA

Good afternoon,

We identified a state reportable release due to fluid daylighting from the subsurface from an oil gathering line. The release has been controlled and the line has been shut-in. Clean-up activities are currently in process. A Form 19 Release Report is forthcoming. This release did not threaten Waters of the State, Public Water System, residences or occupied structures, livestock, wildlife, air quality, or publicly-maintained roads.

The following have been notified via specified method below:

- Weld County contacted via electronic mail
- Surface Owner notification in process

The Environmental Release/Incident Report Hotline and Colorado Parks and Wildlife were not contacted as this release did not trigger notification requirements per 912.b.(2)B.

Location Details:

- Facility Name: SATER 24C,40N,24N,25C-5HZ O SA
- Location: SWNE 8 2N 67W
- Latitude/Longitude: 40.15343, -104.91296
- Location ID: 417800

Please let me know if you have any questions.

Thank you,

Ariana Ochoa

Sr. HSE Advisor

Occidental Petroleum Corporation

t: (713) 350-4906