



FIGURES

Figure 1: Topographic Site Location Map

Figure 2: Aerial Site Location Map

Figure 3: Initial Assessment Soil Analytical Map

Figure 4: Initial Assessment Metals in Soil Map

Figure 5: Release Delineation Soil Analytical Map

Figure 6: Release Delineation Metals in Soil Map

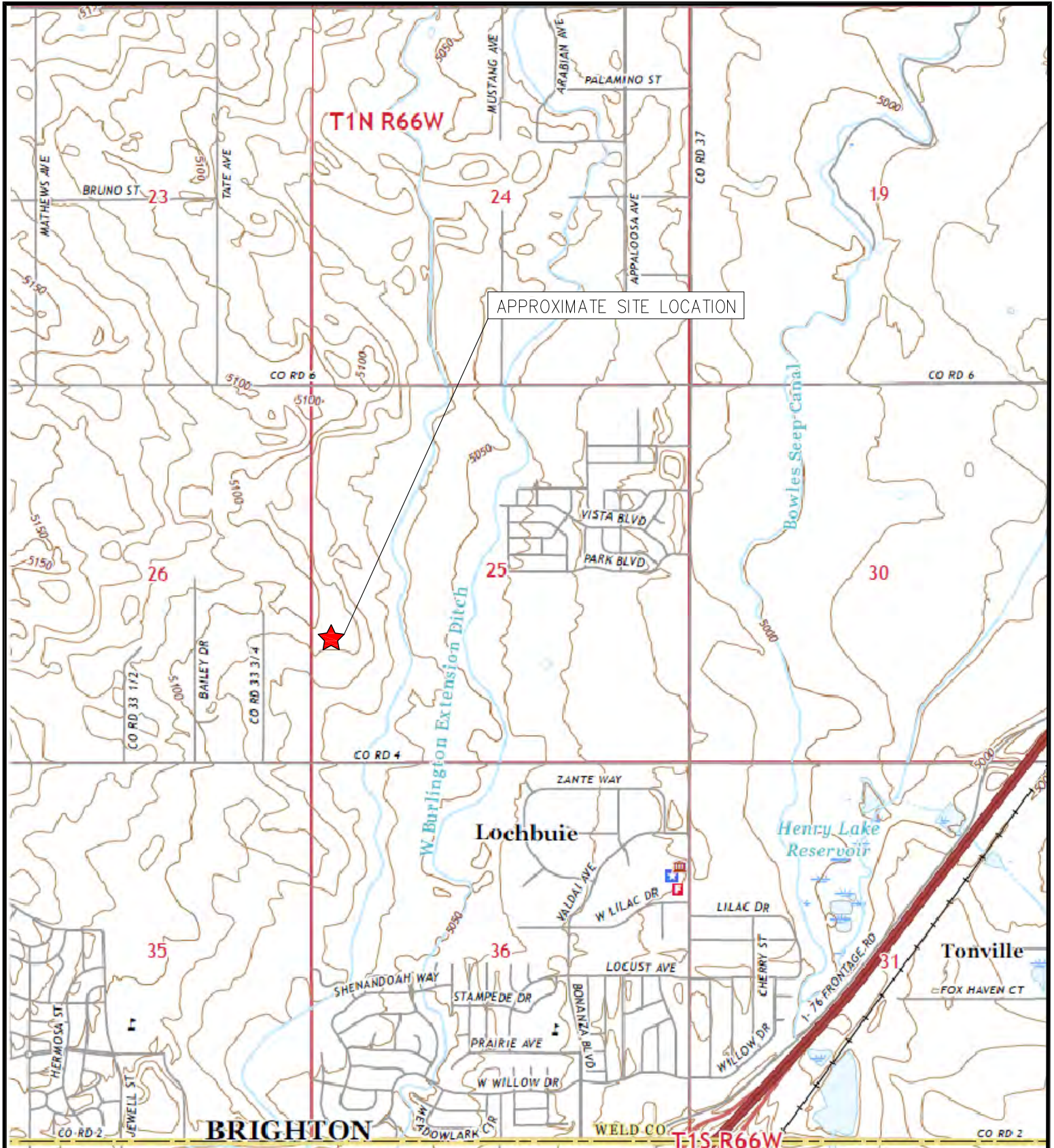
Figure 7: Facility Change Soil Analytical Map (11/16/23)

Figure 8: Facility Change Metals in Soil Map (11/16/23)

Figure 9: Excavation Soil Analytical Map

Figure 10: Excavation Metals in Soil Map

Figure 11: Residual Impact Soil Analytical Map



TOPOGRAPHIC SITE LOCATION MAP
 SAM 25H-M166
 OIL RELEASE
 40.019685 / -104.734069
 NW¼ SW¼ SEC.25 T1N R66W 6PM
 WELD COUNTY, COLORADO
 LOCATION ID 453474
 SPILL # 484966



EAGLE
 ENVIRONMENTAL
 CONSULTING, LLC

8000 W 44th Ave, Wheat Ridge, CO 80033
 Ph: 303-433-0479 • F: 303-325-5449

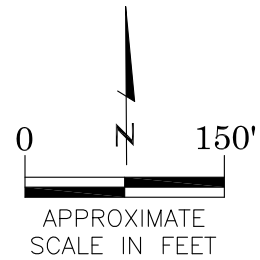
SOURCE: USGS 7.5 MINUTE TOPOGRAPHIC MAP
 HUDSON, CO QUADRANGLE 2022

FIGURE 1



LEGEND

- SAM 25H-M166 PAD BOUNDARIES
- APPROXIMATE RELEASE LOCATION



AERIAL SITE LOCATION MAP

SAM 25H-M166
OIL RELEASE
40.019685 / -104.734069
NW¼ SW¼ SEC.25 T1N R66W 6PM
WELD COUNTY, COLORADO
LOCATION ID 453474
SPILL # 484966

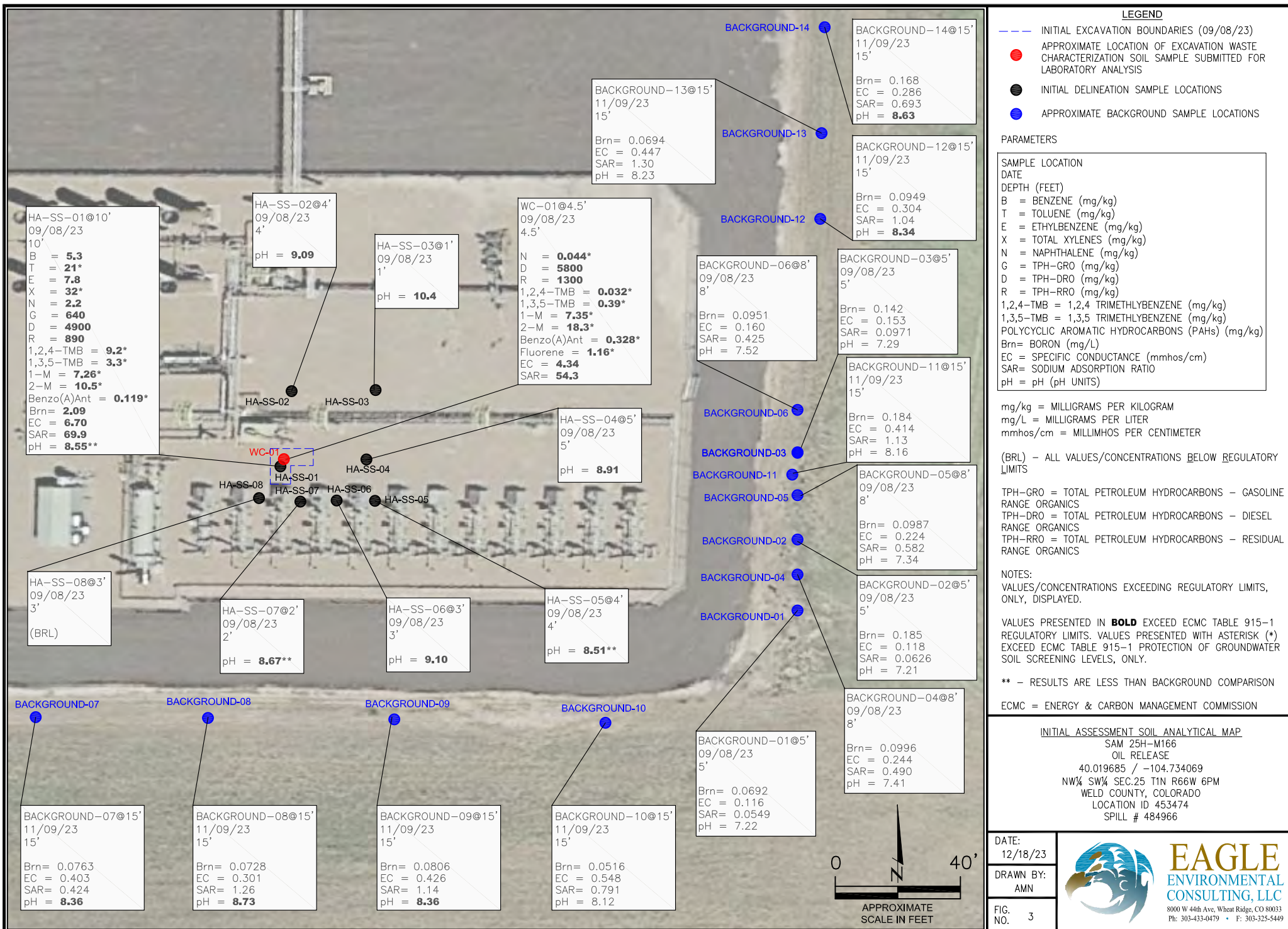
DATE: 10/30/23

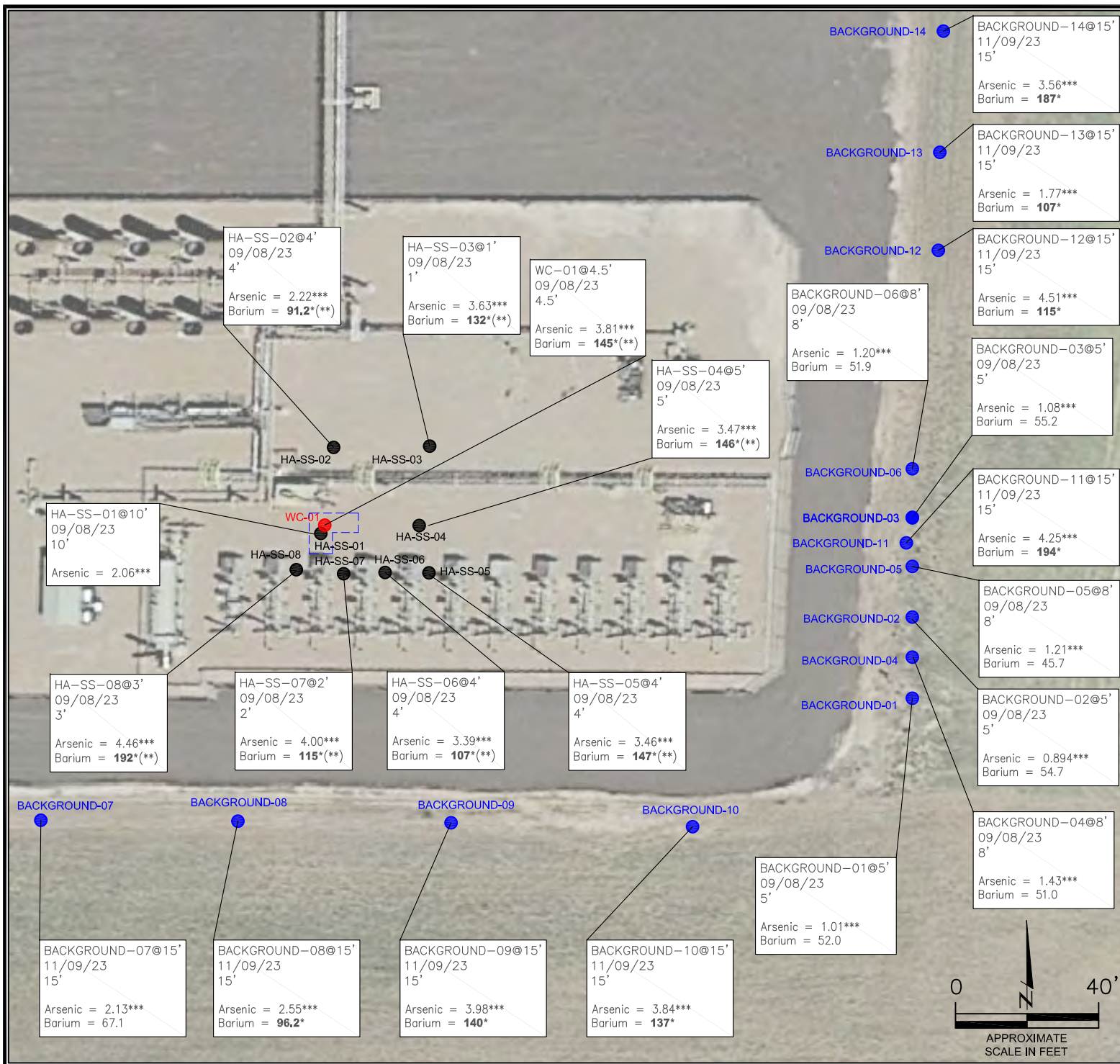
FIG. NO.
2

DRAWN BY:
TC



EAGLE
ENVIRONMENTAL
CONSULTING, LLC
8000 W 44th Ave, Wheat Ridge, CO 80033
Ph: 303-433-0479 • F: 303-325-5449





LEGEND

- INITIAL EXCAVATION BOUNDARIES (09/08/23)
- APPROXIMATE LOCATION OF EXCAVATION WASTE CHARACTERIZATION SOIL SAMPLE SUBMITTED FOR LABORATORY ANALYSIS
- INITIAL DELINEATION SAMPLE LOCATIONS
- APPROXIMATE BACKGROUND SAMPLE LOCATIONS

PARAMETERS

SAMPLE LOCATION
DATE SAMPLE COLLECTED
APPROXIMATE DEPTH
Arsenic = (mg/kg)
Barium = (mg/kg)
Cadmium = (mg/kg)
Chromium (VI) = (mg/kg)
Copper = (mg/kg)
Lead = (mg/kg)
Nickel = (mg/kg)
Selenium = (mg/kg)
Silver = (mg/kg)
Zinc = (mg/kg)

mg/kg = MILLIGRAMS PER KILOGRAM

NOTES:
CONCENTRATIONS/VALUES EXCEEDING REGULATORY LIMITS, ONLY, DISPLAYED.

VALUES PRESENTED IN **BOLD** EXCEED ECMC TABLE 915-1 REGULATORY LIMITS. VALUES PRESENTED WITH ASTERISK (*) EXCEED ECMC TABLE 915-1 PROTECTION OF GROUNDWATER SOIL SCREENING LEVELS, ONLY.

(**) - RESULTS ARE LESS THAN BACKGROUND COMPARISON

***LOCAL "CLEAN-UP LEVEL" (5.64 mg/kg) IS 1.25*BACKGROUND HIGH (4.51 mg/kg).

ECMC = ENERGY & CARBON MANAGEMENT COMMISSION

INITIAL ASSESSMENT METALS IN SOIL MAP

SAM 25H-M166
OIL RELEASE
40.019685 / -104.734069
NW¼ SW¼ SEC.25 T1N R66W 6PM
WELD COUNTY, COLORADO
LOCATION ID 453474
SPILL # 484966

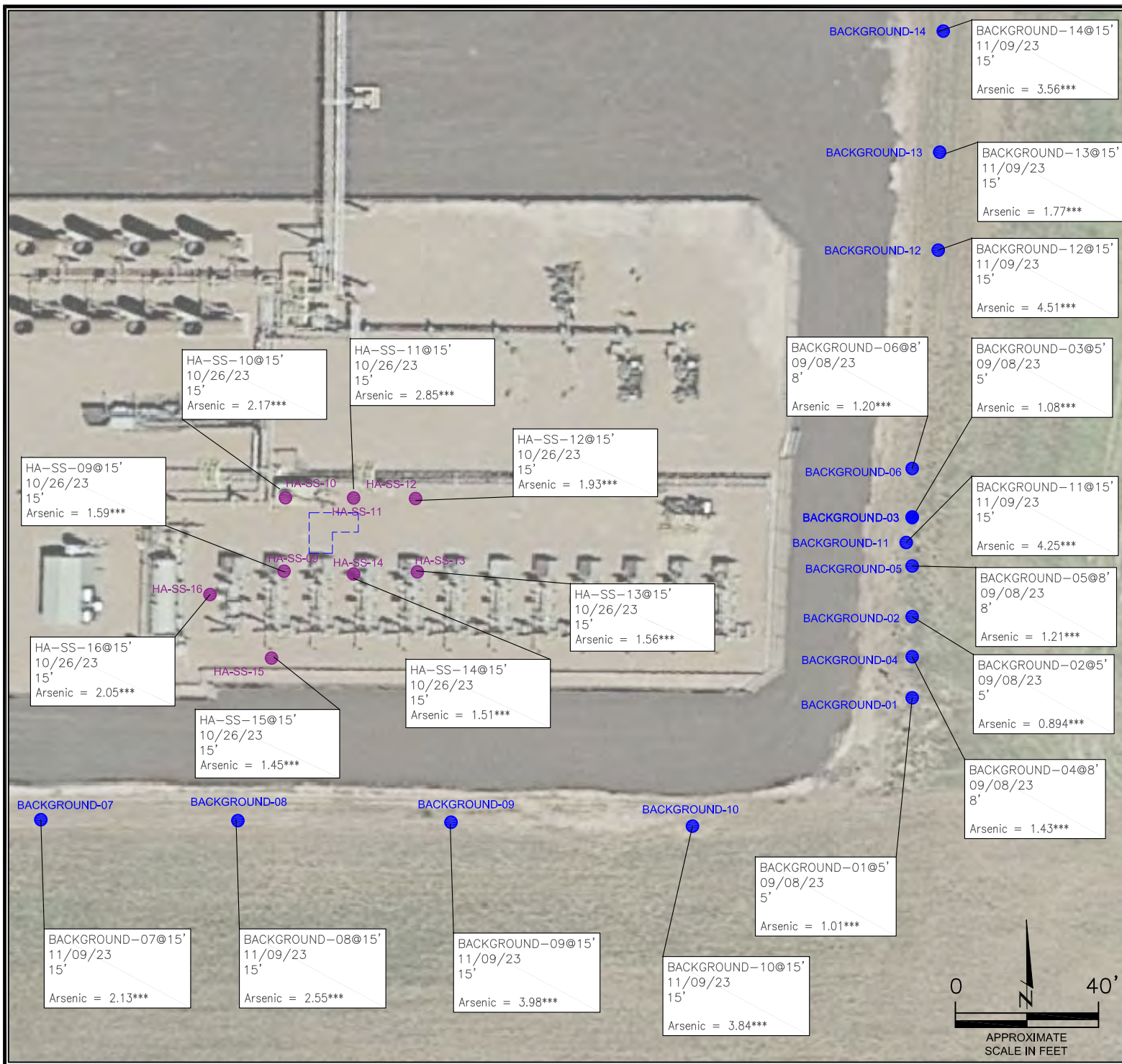
DATE:
12/18/23

DRAWN BY:
AMN

FIG.
NO. 4

EAGLE
ENVIRONMENTAL
CONSULTING, LLC

8000 W 44th Ave, Wheat Ridge, CO 80033
Ph: 303-433-0479 • F: 303-325-5449



LEGEND

--- INITIAL EXCAVATION BOUNDARIES (09/08/23)

● ADDITIONAL DELINEATION SAMPLE LOCATIONS

● APPROXIMATE BACKGROUND SAMPLE LOCATIONS
PARAMETERS

SAMPLE LOCATION
DATE SAMPLE COLLECTED
APPROXIMATE DEPTH
Arsenic = (mg/kg)
Barium = (mg/kg)
Cadmium = (mg/kg)
Chromium (VI) = (mg/kg)
Copper = (mg/kg)
Lead = (mg/kg)
Nickel = (mg/kg)
Selenium = (mg/kg)
Silver = (mg/kg)
Zinc = (mg/kg)

mg/kg = MILLIGRAMS PER KILOGRAM

NOTES:
CONCENTRATIONS/VALUES EXCEEDING REGULATORY LIMITS,
ONLY, DISPLAYED.

VALUES PRESENTED IN **BOLD** EXCEED ECMC TABLE 915-1
REGULATORY LIMITS.

***LOCAL "CLEAN-UP LEVEL" (5.64 mg/kg) IS
1.25*BACKGROUND HIGH (4.51 mg/kg).

ECMC = ENERGY & CARBON MANAGEMENT COMMISSION

RELEASE DELINEATION METALS IN SOIL MAP

SAM 25H-M166
OIL RELEASE
40.019685 / -104.734069
NW¼ SW¼ SEC.25 T1N R66W 6PM
WELD COUNTY, COLORADO
LOCATION ID 453474
SPILL # 484966

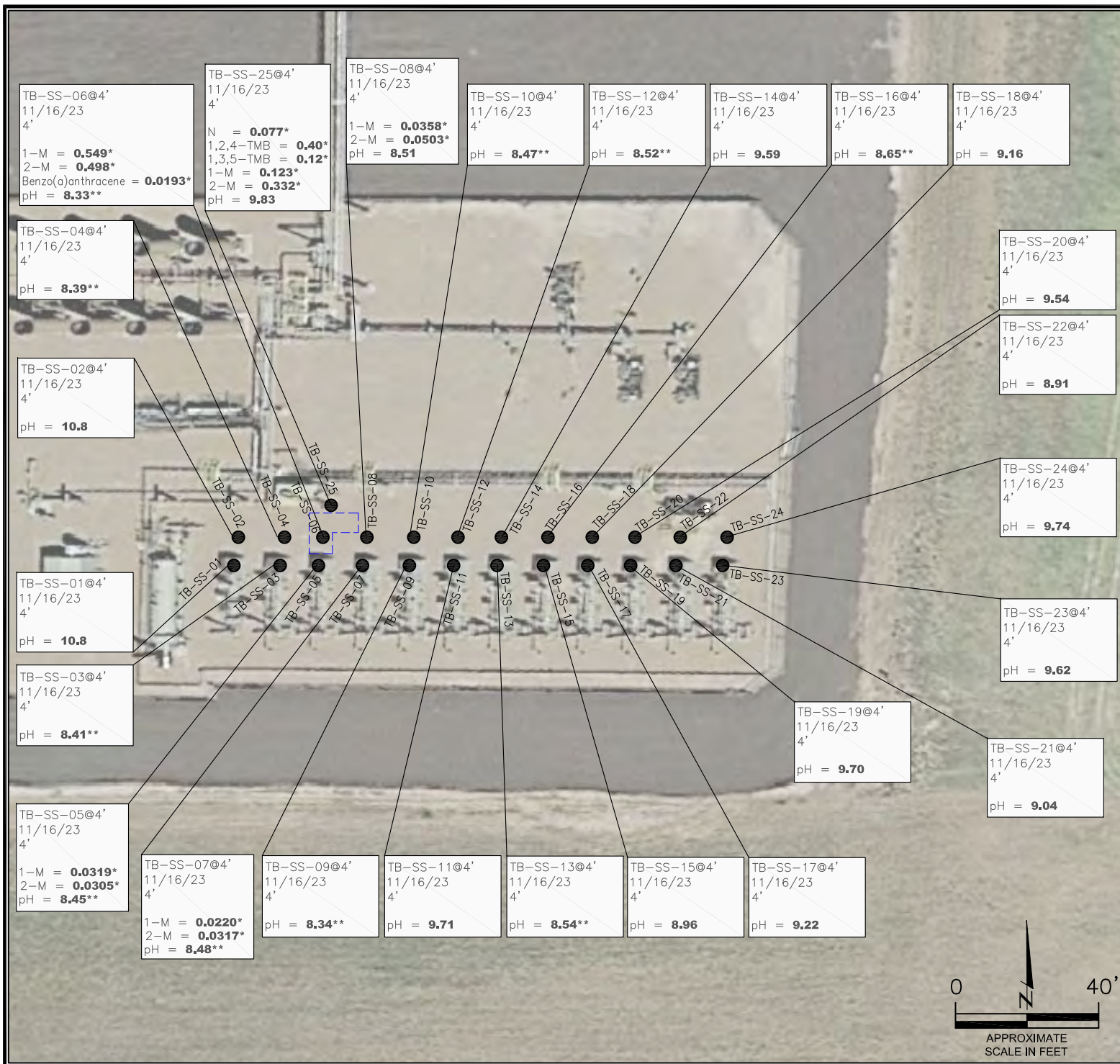
DATE:
12/18/23

DRAWN BY:
AMN

FIG.
NO. 6



EAGLE
ENVIRONMENTAL
CONSULTING, LLC
8000 W 44th Ave, Wheat Ridge, CO 80033
Ph: 303-433-0479 • F: 303-325-5449



LEGEND

--- INITIAL EXCAVATION BOUNDARIES (09/08/23)

● APPROXIMATE FACILITY CHANGE SOIL SAMPLE LOCATIONS

PARAMETERS

SAMPLE LOCATION
DATE
DEPTH (FEET)
B = BENZENE (mg/kg)
T = TOLUENE (mg/kg)
E = ETHYLBENZENE (mg/kg)
X = TOTAL XYLENES (mg/kg)
N = NAPHTHALENE (mg/kg)
G = TPH-GRO (mg/kg)
D = TPH-DRO (mg/kg)
R = TPH-RRO (mg/kg)
1,2,4-TMB = 1,2,4 TRIMETHYLBENZENE (mg/kg)
1,3,5-TMB = 1,3,5 TRIMETHYLBENZENE (mg/kg)
POLYCYCLIC AROMATIC HYDROCARBONS (PAHs) (mg/kg)
Brn= BORON (mg/L)
EC = SPECIFIC CONDUCTANCE (mmhos/cm)
SAR= SODIUM ADSORPTION RATIO
pH = pH (pH UNITS)

mg/kg = MILLIGRAMS PER KILOGRAM
mg/L = MILLIGRAMS PER LITER
mmhos/cm = MILLIMHOS PER CENTIMETER

BRL - ALL VALUES/CONCENTRATIONS BELOW REGULATORY LIMITS

TPH-GRO = TOTAL PETROLEUM HYDROCARBONS - GASOLINE RANGE ORGANICS
TPH-DRO = TOTAL PETROLEUM HYDROCARBONS - DIESEL RANGE ORGANICS
TPH-RRO = TOTAL PETROLEUM HYDROCARBONS - RESIDUAL RANGE ORGANICS

NOTES:
VALUES/CONCENTRATIONS EXCEEDING REGULATORY LIMITS, ONLY, DISPLAYED.

VALUES PRESENTED IN **BOLD** EXCEED ECMC TABLE 915-1 REGULATORY LIMITS. VALUES PRESENTED WITH ASTERISK (*) EXCEED ECMC TABLE 915-1 PROTECTION OF GROUNDWATER SOIL SCREENING LEVELS, ONLY.

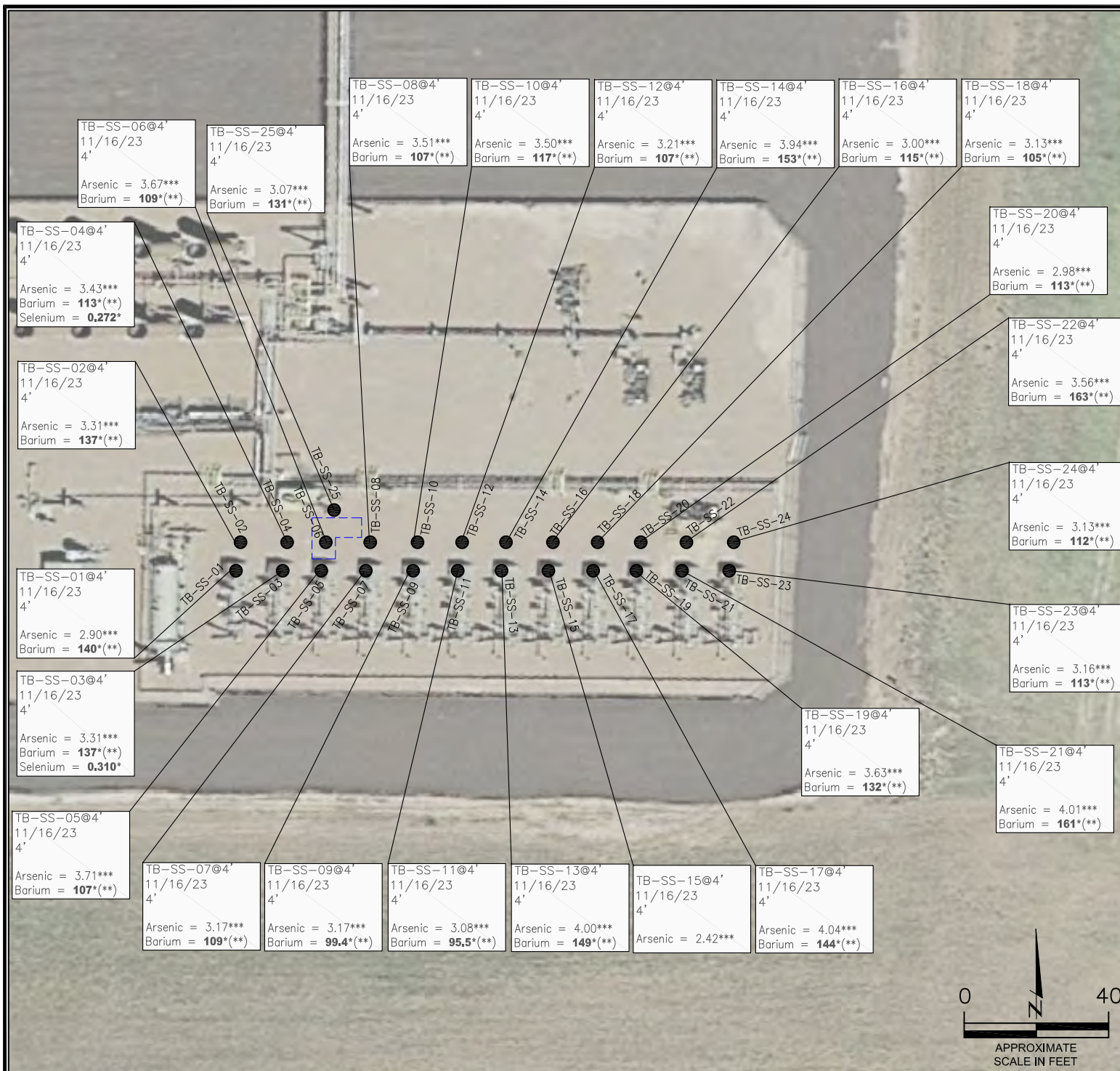
** - RESULTS ARE LESS THAN BACKGROUND COMPARISON

ECMC = ENERGY & CARBON MANAGEMENT COMMISSION

FACILITY CHANGE SOIL ANALYTICAL MAP
(11/16/23)
SAM 25H-M166
OIL RELEASE
40.019685 / -104.734069
NW¼ SW¼ SEC.25 T1N R66W 6PM
WELD COUNTY, COLORADO
LOCATION ID 453474
SPILL # 484966

DATE: 12/18/23
DRAWN BY: AMN
FIG. NO. 7

EAGLE
ENVIRONMENTAL
CONSULTING, LLC
8000 W 44th Ave, Wheat Ridge, CO 80033
Ph: 303-433-0479 • F: 303-325-5449



LEGEND

--- INITIAL EXCAVATION BOUNDARIES (09/08/23)

● APPROXIMATE FACILITY CHANGE SOIL SAMPLE LOCATIONS

PARAMETERS

SAMPLE LOCATION
DATE SAMPLE COLLECTED
APPROXIMATE DEPTH
Arsenic = (mg/kg)
Barium = (mg/kg)
Cadmium = (mg/kg)
Chromium (VI) = (mg/kg)
Copper = (mg/kg)
Lead = (mg/kg)
Nickel = (mg/kg)
Selenium = (mg/kg)
Silver = (mg/kg)
Zinc = (mg/kg)

mg/kg = MILLIGRAMS PER KILOGRAM

NOTES:

CONCENTRATIONS/VALUES EXCEEDING REGULATORY LIMITS, ONLY, DISPLAYED.

VALUES PRESENTED IN **BOLD** EXCEED ECMC TABLE 915-1 REGULATORY LIMITS. VALUES PRESENTED WITH ASTERISK (*) EXCEED ECMC TABLE 915-1 PROTECTION OF GROUNDWATER SOIL SCREENING LEVELS, ONLY.

(**) - RESULTS ARE LESS THAN BACKGROUND COMPARISON

***LOCAL "CLEAN-UP LEVEL" (5.64 mg/kg) IS 1.25*BACKGROUND HIGH (4.51 mg/kg).

ECMC = ENERGY & CARBON MANAGEMENT COMMISSION

FACILITY CHANGE METALS IN SOIL MAP

(11/16/23)

SAM 25H-M166

OIL RELEASE

40.019685 / -104.734069

NW¼ SW¼ SEC.25 T1N R66W 6PM

WELD COUNTY, COLORADO

LOCATION ID 453474

SPILL # 484966

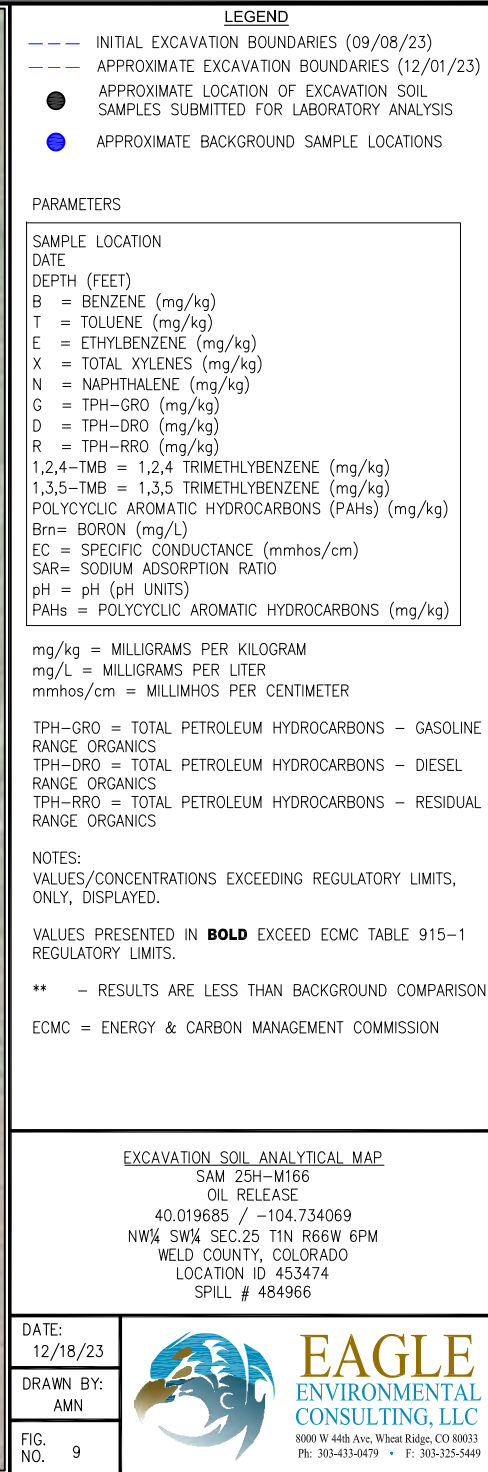
DATE:
12/18/23

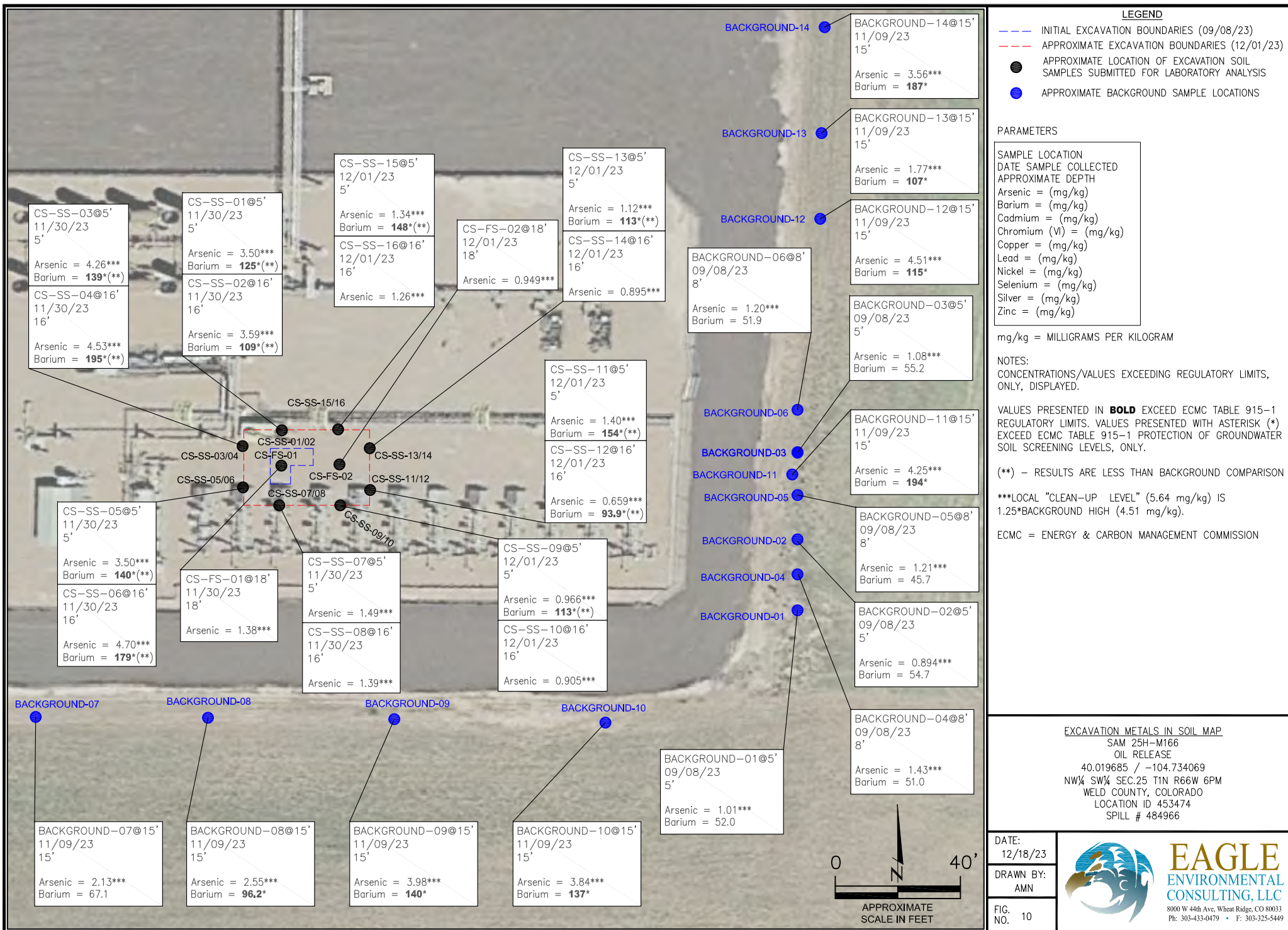
DRAWN BY:
AMN

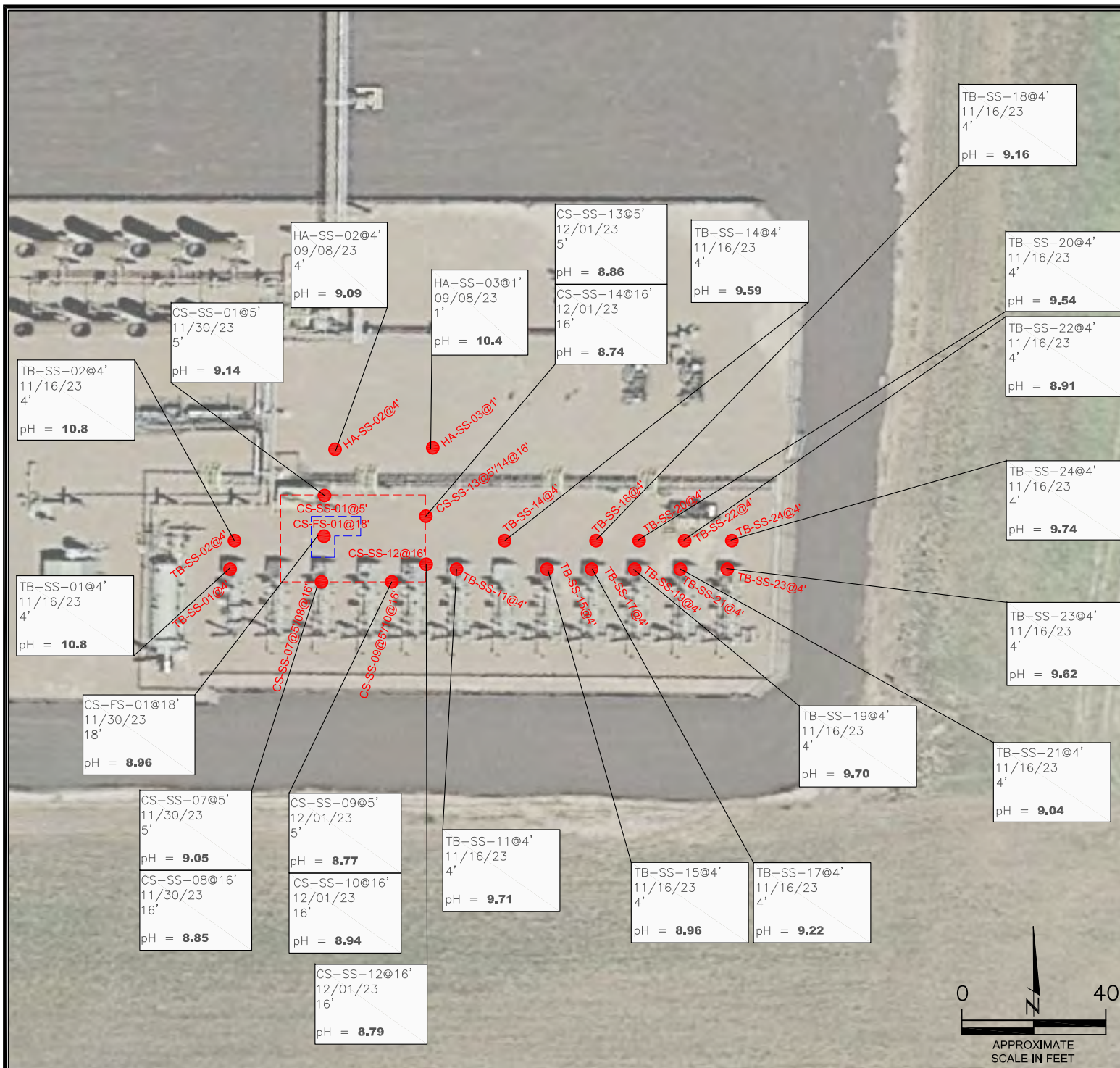
FIG.
NO. 8



EAGLE
ENVIRONMENTAL
CONSULTING, LLC
8000 W 44th Ave, Wheat Ridge, CO 80033
Ph: 303-433-0479 • F: 303-325-5449







LEGEND

- INITIAL EXCAVATION BOUNDARIES (09/08/23)
- APPROXIMATE EXCAVATION BOUNDARIES (12/01/23)
- APPROXIMATE LOCATION OF SOIL SAMPLES WITH RESIDUAL pH IMPACTS

PARAMETERS

SAMPLE LOCATION
DATE
DEPTH (FEET)
pH = pH (pH UNITS)

NOTES:

****** VALUES PRESENTED IN **BOLD** EXCEED ECMC TABLE 915-1 REGULATORY LIMITS AND BACKGROUND COMPARISON

ECMC = ENERGY & CARBON MANAGEMENT COMMISSION

RESIDUAL IMPACT SOIL ANALYTICAL MAP

SAM 25H-M166
OIL RELEASE
40.019685 / -104.734069
NW¼ SW¼ SEC.25 T1N R66W 6PM
WELD COUNTY, COLORADO
LOCATION ID 453474
SPILL # 484966

DATE:
12/18/23

DRAWN BY:
AMN

FIG.
NO. 11

EAGLE
ENVIRONMENTAL
CONSULTING, LLC

8000 W 44th Ave, Wheat Ridge, CO 80033
Ph: 303-433-0479 • F: 303-325-5449



TABLES

Table 1: Photoionization Detector Reading Summary

Table 2: Soil Analytical Results Summary

Table 3: Polycyclic Aromatics Hydrocarbons Analytical Results Summary

Table 4: Metals Analytical Results Summary

Table 5: Residual Impact Analytical Results Summary

TABLE 1
 PHOTOIONIZATION DETECTOR READING SUMMARY
 SAM 25H-M166
 OIL RELEASE
 40.019685 / -104.734069
 NW¼ SW¼ SEC.25 T1N R66W 6PM
 WELD COUNTY, COLORADO
 LOCATION ID 453474
 SPILL # 484966

Sample Location (Latitude/Longitude)	Date	Approximate Depth (feet)	PID Reading (ppm-v)	Lab Submission (Y/N)	Notes
WC-01 @ 4.5' (40.019689 / -104.734067)	09/08/23	4.5	4209	Y	Waste characterization sample
HA-SS-01 @ 10' (40.019684 / -104.734070)	09/08/23	10	3314	Y	Release delineation samples
HA-SS-02 @ 4' (40.019741 / -104.734053)	09/08/23	4	155	Y	
HA-SS-03 @ 1' (40.019739 / -104.733968)	09/08/23	1	184.8	Y	
HA-SS-04 @ 5' (40.019680 / -104.733984)	09/08/23	5	265.7	Y	
HA-SS-05 @ 4' (40.019654 / -104.733969)	09/08/23	4	12.4	Y	
HA-SS-06 @ 3' (40.019657 / -104.734008)	09/08/23	3	23.7	Y	
HA-SS-07 @ 2' (40.019658 / -104.734049)	09/08/23	2	27.9	Y	
HA-SS-08 @ 3' (40.019659 / -104.734092)	09/08/23	3	19.2	Y	
Background-01 @ 5' (40.019560 / -104.733503)	09/08/23	5	6.1	Y	Background comparison samples
Background-02 @ 5' (40.019613 / -104.733506)	09/08/23	5	9.5	Y	
Background-03 @ 5' (40.019686 / -104.733501)	09/08/23	5	10.2	Y	
Background-04 @ 8' (40.019591 / -104.733508)	09/08/23	8	8.7	Y	
Background-05 @ 8' (40.019655 / -104.733501)	09/08/23	8	6.3	Y	
Background-06 @ 8' (40.019727 / -104.733498)	09/08/23	8	7.9	Y	
HA-SS-09 @ 15' (40.019655 / -104.734104)	10/26/23	15	33.1	Y	Additional release delineation samples
HA-SS-10 @ 15' (40.019704 / -104.734103)	10/26/23	15	40.0	Y	
HA-SS-11 @ 15' (40.019706 / -104.734043)	10/26/23	15	72.5	Y	
HA-SS-12 @ 15' (40.019703 / -104.733980)	10/26/23	15	12.7	Y	
HA-SS-13 @ 15' (40.019656 / -104.733980)	10/26/23	15	8.5	Y	
HA-SS-14 @ 15' (40.019655 / -104.734040)	10/26/23	15	10.1	Y	

TABLE 1
 PHOTOIONIZATION DETECTOR READING SUMMARY
 SAM 25H-M166
 OIL RELEASE
 40.019685 / -104.734069
 NW¼ SW¼ SEC.25 T1N R66W 6PM
 WELD COUNTY, COLORADO
 LOCATION ID 453474
 SPILL # 484966

Sample Location (Latitude/Longitude)	Date	Approximate Depth (feet)	PID Reading (ppm-v)	Lab Submission (Y/N)	Notes
HA-SS-15 @ 15' (40.019587 / -104.734123)	10/26/23	15	3.9	Y	Additional release delineation samples, continued.
HA-SS-16 @ 15' (40.019631 / -104.734176)	10/26/23	15	2.6	Y	
Background-07 @ 15' (40.019474 / -104.734341)	11/09/23	15	1.9	Y	Background comparison samples
Background-08 @ 15' (40.019467 / -104.734152)	11/09/23	15	1.2	Y	
Background-09 @ 15' (40.019465 / -104.733955)	11/09/23	15	0.8	Y	
Background-10 @ 15' (40.019465 / -104.733705)	11/09/23	15	1.4	Y	
Background-11 @ 15' (40.019672 / -104.733507)	11/09/23	15	2.1	Y	
Background-12 @ 15' (40.019888 / -104.733476)	11/09/23	15	1.7	Y	
Background-13 @ 15' (40.019959 / -104.733494)	11/09/23	15	2.0	Y	
Background-14 @ 15' (40.020041 / -104.733487)	11/09/23	15	1.9	Y	
TB-SS-01 @ 4' (40.019657 / -104.734154)	11/16/23	4	1.4	Y	Facility change assessment samples
TB-SS-02 @ 4' (40.019673 / -104.734152)	11/16/23	4	1.7	Y	
TB-SS-03 @ 4' (40.019655 / -104.734107)	11/16/23	4	2.4	Y	
TB-SS-04 @ 4' (40.019672 / -104.734106)	11/16/23	4	1.9	Y	
TB-SS-05 @ 4' (40.019655 / -104.734067)	11/16/23	4	17.6	Y	
TB-SS-06 @ 4' (40.019673 / -104.734069)	11/16/23	4	21.4	Y	
TB-SS-07 @ 4' (40.019655 / -104.734027)	11/16/23	4	25.9	Y	
TB-SS-08 @ 4' (40.019674 / -104.734027)	11/16/23	4	23.6	Y	
TB-SS-09 @ 4' (40.019654 / -104.733982)	11/16/23	4	1.6	Y	
TB-SS-10 @ 4' (40.019675 / -104.733984)	11/16/23	4	1.2	Y	
TB-SS-11 @ 4' (40.019654 / -104.733939)	11/16/23	4	0.9	Y	

TABLE 1
 PHOTOIONIZATION DETECTOR READING SUMMARY
 SAM 25H-M166
 OIL RELEASE
 40.019685 / -104.734069
 NW¼ SW¼ SEC.25 T1N R66W 6PM
 WELD COUNTY, COLORADO
 LOCATION ID 453474
 SPILL # 484966

Sample Location (Latitude/Longitude)	Date	Approximate Depth (feet)	PID Reading (ppm-v)	Lab Submission (Y/N)	Notes
TB-SS-12 @ 4' (40.019676 / -104.733939)	11/16/23	4	1.2	Y	Facility change assessment samples, continued.
TB-SS-13 @ 4' (40.019653 / -104.733896)	11/16/23	4	0.9	Y	
TB-SS-14 @ 4' (40.019674 / -104.733896)	11/16/23	4	0.8	Y	
TB-SS-15 @ 4' (40.019655 / -104.733854)	11/16/23	4	1.2	Y	
TB-SS-16 @ 4' (40.019676 / -104.733854)	11/16/23	4	0.7	Y	
TB-SS-17 @ 4' (40.019654 / -104.733811)	11/16/23	4	0.6	Y	
TB-SS-18 @ 4' (40.019674 / -104.733810)	11/16/23	4	0.5	Y	
TB-SS-19 @ 4' (40.019654 / -104.733769)	11/16/23	4	0.6	Y	
TB-SS-20 @ 4' (40.019674 / -104.733770)	11/16/23	4	0.7	Y	
TB-SS-21 @ 4' (40.019653 / -104.733726)	11/16/23	4	1.1	Y	
TB-SS-22 @ 4' (40.019674 / -104.733727)	11/16/23	4	0.8	Y	
TB-SS-23 @ 4' (40.019653 / -104.733681)	11/16/23	4	1.4	Y	
TB-SS-24 @ 4' (40.019675 / -104.733682)	11/16/23	4	1.1	Y	
TB-SS-25 @ 4' (40.019701 / -104.734065)	11/16/23	4	668.4	Y	
CS-SS-01 @ 5' (40.019710 / -104.734067)	11/30/23	5	4.9	Y	Excavation confirmation samples
CS-SS-02 @ 16' (40.019710 / -104.734067)	11/30/23	16	7.3	Y	
CS-SS-03 @ 5' (40.019695 / -104.734109)	11/30/23	5	24.6	Y	
CS-SS-04 @ 16' (40.019695 / -104.734109)	11/30/23	16	1.2	Y	
CS-SS-05 @ 5' (40.019658 / -104.734110)	11/30/23	5	12.8	Y	
CS-SS-06 @ 16' (40.019658 / -104.734110)	11/30/23	16	8.2	Y	

TABLE 1
 PHOTOIONIZATION DETECTOR READING SUMMARY
 SAM 25H-M166
 OIL RELEASE
 40.019685 / -104.734069
 NW¼ SW¼ SEC.25 T1N R66W 6PM
 WELD COUNTY, COLORADO
 LOCATION ID 453474
 SPILL # 484966

Sample Location (Latitude/Longitude)	Date	Approximate Depth (feet)	PID Reading (ppm-v)	Lab Submission (Y/N)	Notes
CS-SS-07 @ 5' (40.019647 / -104.734069)	11/30/23	5	6.5	Y	Excavation confirmation samples, continued.
CS-SS-08 @ 16' (40.019647 / -104.734069)	11/30/23	16	18.4	Y	
CS-FS-01 @ 18' (40.019682 / -104.734068)	11/30/23	18	11.8	Y	
CS-SS-09 @ 5' (40.019647 / -104.734003)	12/01/23	5	4.1	Y	
CS-SS-10 @ 16' (40.019647 / -104.734003)	12/01/23	16	5.6	Y	
CS-SS-11 @ 5' (40.019662 / -104.733973)	12/01/23	5	3.9	Y	
CS-SS-12 @ 16' (40.019662 / -104.733973)	12/01/23	16	0.9	Y	
CS-SS-13 @ 5' (40.019695 / -104.733974)	12/01/23	5	8.6	Y	
CS-SS-14 @ 16' (40.019695 / -104.733974)	12/01/23	16	6.8	Y	
CS-SS-15 @ 5' (40.019709 / -104.734007)	12/01/23	5	1.7	Y	
CS-SS-16 @ 16' (40.019709 / -104.734007)	12/01/23	16	1.9	Y	
CS-FS-02 @ 18' (40.019679 / -104.734006)	12/01/23	18	3.1	Y	
(Y/N) = Yes or No					
ppm-v = parts per million by volume					
PID = Photoionization Detector					

TABLE 2
SOIL ANALYTICAL RESULTS SUMMARY
SAM 25H-M166
OIL RELEASE
40.019685 / -104.734069
NW¼ SW¼ SEC.25 T1N R66W 6PM
WELD COUNTY, COLORADO
LOCATION ID 453474
SPILL # 484966

Sample Location (Latitude/Longitude)	Date	Approximate Depth (feet)	PID Reading (ppm-v)	Benzene (mg/kg)	Toluene (mg/kg)	Ethylbenzene (mg/kg)	Total Xylenes (mg/kg)	TPH-GRO (mg/kg)	TPH-DRO (mg/kg)	TPH-RRO (mg/kg)	1,2,4-TMB (mg/kg)	1,3,5-TMB (mg/kg)	Boron (mg/L)	Specific Conductance (mmhos/cm)	pH (pH units)	SAR
ECMC Table 915-1 Residential Soil Screening Levels				1.20	490	5.8	58	500			30	27	2	<4	6-8.3	<6
ECMC Table 915-1 Protection of Groundwater Soil Screening Levels (GSSLs)				0.0026	0.69	0.78	9.9	--			0.0081	0.0087	--	--	--	--
Local Cleanup Levels				--	--	--	--	--			--	--	--	--	8.73	--
Waste characterization sample																
WC-01 @ 4.5' (40.019689 / -104.734067)	09/08/23	4.5	4209	<0.0020	<0.0050	<0.0050	0.53	210	5800	1300	0.032*	0.39*	0.941	4.34	8.24	54.3
Release delineation samples																
HA-SS-01 @ 10' (40.019684 / -104.734070)	09/08/23	10	3314	5.3	21*	7.8	32*	640	4900	890	9.2*	3.3*	2.09	6.70	8.55	69.9
HA-SS-02 @ 4' (40.019741 / -104.734053)	09/08/23	4	155	<0.0020	<0.0050	<0.0050	<0.010	<0.50	34	25	<0.0050	<0.0050	0.220	0.175	9.09	0.891
HA-SS-03 @ 1' (40.019739 / -104.733968)	09/08/23	1	184.8	<0.0020	<0.0050	<0.0050	<0.010	<0.50	12	13	<0.0050	<0.0050	0.137	0.220	10.4	0.573
HA-SS-04 @ 5' (40.019680 / -104.733984)	09/08/23	5	265.7	<0.0020	<0.0050	<0.0050	<0.010	<0.50	7.7	7.5	<0.0050	<0.0050	0.118	0.171	8.91	0.497
HA-SS-05 @ 4' (40.019654 / -104.733969)	09/08/23	4	12.4	<0.0020	<0.0050	<0.0050	<0.010	<0.50	6.8	5.0	<0.0050	<0.0050	0.125	0.166	8.51	0.617
HA-SS-06 @ 3' (40.019657 / -104.734008)	09/08/23	3	23.7	<0.0020	<0.0050	<0.0050	<0.010	<0.50	5.3	<50	<0.0050	<0.0050	0.510	0.182	9.10	0.950
HA-SS-07 @ 2' (40.019658 / -104.734049)	09/08/23	2	27.9	<0.0020	<0.0050	<0.0050	<0.010	<0.50	5.3	<50	<0.0050	<0.0050	0.157	0.157	8.67	0.724
HA-SS-08 @ 3' (40.019659 / -104.734092)	09/08/23	3	19.2	<0.0020	<0.0050	<0.0050	<0.010	<0.50	5.5	<50	<0.0050	<0.0050	0.121	0.166	8.21	0.412
Background comparison samples																
Background-01 @ 5' (40.019560 / -104.733503)	09/08/23	5	6.1	NA	NA	NA	NA	NA	NA	NA	NA	NA	0.0692	0.116	7.22	0.0549
Background-02 @ 5' (40.019613 / -104.733506)	09/08/23	5	9.5	NA	NA	NA	NA	NA	NA	NA	NA	NA	0.185	0.118	7.21	0.0626
Background-03 @ 5' (40.019686 / -104.733501)	09/08/23	5	10.2	NA	NA	NA	NA	NA	NA	NA	NA	NA	0.142	0.153	7.29	0.0971
Background-04 @ 8' (40.019591 / -104.733508)	09/08/23	8	8.7	NA	NA	NA	NA	NA	NA	NA	NA	NA	0.0996	0.244	7.41	0.490
Background-05 @ 8' (40.019655 / -104.733501)	09/08/23	8	6.3	NA	NA	NA	NA	NA	NA	NA	NA	NA	0.0987	0.224	7.34	0.582
Background-06 @ 8' (40.019727 / -104.733498)	09/08/23	8	7.9	NA	NA	NA	NA	NA	NA	NA	NA	NA	0.0951	0.160	7.52	0.425
Additional release delineation samples																
HA-SS-09 @ 15' (40.019655 / -104.734104)	10/26/23	15	33.1	<0.0020	<0.0050	<0.0050	<0.010	0.038	28	11	<0.0050	<0.0050	<2.00	0.244	8.74	1.34
HA-SS-10 @ 15' (40.019704 / -104.734103)	10/26/23	15	40.0	<0.0020	0.0047	<0.0050	0.019	0.82	33	11	0.0044	0.0086	0.0189	0.779	7.79	3.31
HA-SS-11 @ 15' (40.019706 / -104.734043)	10/26/23	15	72.5	<0.0020	<0.0050	<0.0050	<0.010	0.039	42	11	<0.0050	<0.0050	0.00762	0.382	8.21	3.71
HA-SS-12 @ 15' (40.019703 / -104.733980)	10/26/23	15	12.7	<0.0020	<0.0050	<0.0050	<0.010	0.039	47	12	<0.0050	<0.0050	0.0223	0.607	8.25	5.29
HA-SS-13 @ 15' (40.019656 / -104.733980)	10/26/23	15	8.5	<0.0020	<0.0050	<0.0050	<0.010	0.036	45	11	<0.0050	<0.0050	0.0462	0.365	9.04	3.92
HA-SS-14 @ 15' (40.019655 / -104.734040)	10/26/23	15	10.1	<0.0020	<0.0050	<0.0050	<0.010	0.041	<50	11	<0.0050	<0.0050	0.0467	0.331	8.93	3.75
HA-SS-15 @ 15' (40.019587 / -104.734123)	10/26/23	15	3.9	<0.0020	<0.0050	<0.0050	<0.010	0.035	16	5.7	<0.0050	<0.0050	0.0542	0.841	8.03	1.68
HA-SS-16 @ 15' (40.019631 / -104.734176)	10/26/23	15	2.6	<0.0020	<0.0050	<0.0050	<0.010	0.039	14	5.9	<0.0050	<0.0050	0.0333	0.751	8.14	1.58

TABLE 2
SOIL ANALYTICAL RESULTS SUMMARY
SAM 25H-M166
OIL RELEASE
40.019685 / -104.734069
NW¼ SW¼ SEC.25 T1N R66W 6PM
WELD COUNTY, COLORADO
LOCATION ID 453474
SPILL # 484966

Sample Location (Latitude/Longitude)	Date	Approximate Depth (feet)	PID Reading (ppm-v)	Benzene (mg/kg)	Toluene (mg/kg)	Ethylbenzene (mg/kg)	Total Xylenes (mg/kg)	TPH-GRO (mg/kg)	TPH-DRO (mg/kg)	TPH-RRO (mg/kg)	1,2,4-TMB (mg/kg)	1,3,5-TMB (mg/kg)	Boron (mg/L)	Specific Conductance (mmhos/cm)	pH (pH units)	SAR
ECMC Table 915-1 Residential Soil Screening Levels				1.20	490	5.8	58	500			30	27	2	<4	6-8.3	<6
ECMC Table 915-1 Protection of Groundwater Soil Screening Levels (GSSLs)				0.0026	0.69	0.78	9.9	--			0.0081	0.0087	--	--	--	--
Local Cleanup Levels				--	--	--	--	--			--	--	--	--	8.73	--
Background comparison samples																
Background-07 @ 15' (40.019474 / -104.734341)	11/09/23	15	1.9	NA	NA	NA	NA	NA	NA	NA	NA	NA	0.0763	0.403	8.36	0.424
Background-08 @ 15' (40.019467 / -104.734152)	11/09/23	15	1.2	NA	NA	NA	NA	NA	NA	NA	NA	NA	0.0728	0.301	8.73	1.26
Background-09 @ 15' (40.019465 / -104.733955)	11/09/23	15	0.8	NA	NA	NA	NA	NA	NA	NA	NA	NA	0.0806	0.426	8.36	1.14
Background-10 @ 15' (40.019465 / -104.733705)	11/09/23	15	1.4	NA	NA	NA	NA	NA	NA	NA	NA	NA	0.0516	0.548	8.12	0.791
Background-11 @ 15' (40.019672 / -104.733507)	11/09/23	15	2.1	NA	NA	NA	NA	NA	NA	NA	NA	NA	0.184	0.414	8.16	1.13
Background-12 @ 15' (40.019888 / -104.733476)	11/09/23	15	1.7	NA	NA	NA	NA	NA	NA	NA	NA	NA	0.0949	0.304	8.34	1.04
Background-13 @ 15' (40.019959 / -104.733494)	11/09/23	15	2.0	NA	NA	NA	NA	NA	NA	NA	NA	NA	0.0694	0.447	8.23	1.30
Background-14 @ 15' (40.020041 / -104.733487)	11/09/23	15	1.9	NA	NA	NA	NA	NA	NA	NA	NA	NA	0.168	0.286	8.63	0.693
Facility change assessment samples																
TB-SS-01 @ 4' (40.019657 / -104.734154)	11/16/23	4	1.4	<0.0020	<0.0050	<0.0050	<0.010	<0.50	29	6.6	<0.0050	<0.0050	0.515	0.303	10.8	0.838
TB-SS-02 @ 4' (40.019673 / -104.734152)	11/16/23	4	1.7	<0.0020	<0.0050	<0.0050	<0.010	<0.50	26	6.1	<0.0050	<0.0050	0.547	0.354	10.8	0.869
TB-SS-03 @ 4' (40.019655 / -104.734107)	11/16/23	4	2.4	<0.0020	<0.0050	<0.0050	<0.010	<0.50	270	190	<0.0050	<0.0050	0.782	0.998	8.41	2.05
TB-SS-04 @ 4' (40.019672 / -104.734106)	11/16/23	4	1.9	<0.0020	<0.0050	<0.0050	<0.010	<0.50	280	180	<0.0050	<0.0050	0.661	0.908	8.39	1.95
TB-SS-05 @ 4' (40.019655 / -104.734067)	11/16/23	4	17.6	<0.0020	<0.0050	<0.0050	<0.010	<0.50	130	100	<0.0050	<0.0050	0.512	0.524	8.45	1.20
TB-SS-06 @ 4' (40.019673 / -104.734069)	11/16/23	4	21.4	<0.0020	<0.0050	<0.0050	<0.010	<0.50	260	170	<0.0050	<0.0050	0.506	0.620	8.33	1.56
TB-SS-07 @ 4' (40.019655 / -104.734027)	11/16/23	4	25.9	<0.0020	<0.0050	<0.0050	<0.010	<0.50	70	16	<0.0050	<0.0050	0.411	0.459	8.48	1.10
TB-SS-08 @ 4' (40.019674 / -104.734027)	11/16/23	4	23.6	<0.0020	<0.0050	<0.0050	<0.010	<0.50	120	19	<0.0050	<0.0050	0.381	0.415	8.51	1.07
TB-SS-09 @ 4' (40.019654 / -104.733982)	11/16/23	4	1.6	<0.0020	<0.0050	<0.0050	<0.010	<0.50	34	13	<0.0050	<0.0050	0.344	0.512	8.34	1.15
TB-SS-10 @ 4' (40.019675 / -104.733984)	11/16/23	4	1.2	<0.0020	<0.0050	<0.0050	<0.010	<0.50	34	11	<0.0050	<0.0050	0.320	0.416	8.47	0.959
TB-SS-11 @ 4' (40.019654 / -104.733939)	11/16/23	4	0.9	<0.0020	<0.0050	<0.0050	<0.010	<0.50	27	9.7	<0.0050	<0.0050	0.394	0.163	9.71	0.292
TB-SS-12 @ 4' (40.019676 / -104.733939)	11/16/23	4	1.2	<0.0020	<0.0050	<0.0050	<0.010	<0.50	28	10	<0.0050	<0.0050	0.261	0.186	8.52	0.316
TB-SS-13 @ 4' (40.019653 / -104.733896)	11/16/23	4	0.9	<0.0020	<0.0050	<0.0050	<0.010	<0.50	29	12	<0.0050	<0.0050	0.191	0.218	8.54	0.404
TB-SS-14 @ 4' (40.019674 / -104.733896)	11/16/23	4	0.8	<0.0020	<0.0050	<0.0050	<0.010	<0.50	28	12	<0.0050	<0.0050	0.200	0.206	9.59	0.361
TB-SS-15 @ 4' (40.019655 / -104.733854)	11/16/23	4	1.2	<0.0020	<0.0050	<0.0050	<0.010	<0.50	25	13	<0.0050	<0.0050	0.251	0.231	8.96	0.952

TABLE 2
SOIL ANALYTICAL RESULTS SUMMARY
SAM 25H-M166
OIL RELEASE
40.019685 / -104.734069
NW¼ SW¼ SEC.25 T1N R66W 6PM
WELD COUNTY, COLORADO
LOCATION ID 453474
SPILL # 484966

Sample Location (Latitude/Longitude)	Date	Approximate Depth (feet)	PID Reading (ppm-v)	Benzene (mg/kg)	Toluene (mg/kg)	Ethylbenzene (mg/kg)	Total Xylenes (mg/kg)	TPH-GRO (mg/kg)	TPH-DRO (mg/kg)	TPH-RRO (mg/kg)	1,2,4-TMB (mg/kg)	1,3,5-TMB (mg/kg)	Boron (mg/L)	Specific Conductance (mmhos/cm)	pH (pH units)	SAR
ECMC Table 915-1 Residential Soil Screening Levels				1.20	490	5.8	58	500			30	27	2	<4	6-8.3	<6
ECMC Table 915-1 Protection of Groundwater Soil Screening Levels (GSSLs)				0.0026	0.69	0.78	9.9	--			0.0081	0.0087	--	--	--	--
Local Cleanup Levels				--	--	--	--	--			--	--	--	--	8.73	--
Facility change assessment samples, continued.																
TB-SS-16 @ 4' (40.019676 / -104.733854)	11/16/23	4	0.7	<0.0020	<0.0050	<0.0050	<0.010	<0.50	24	12	<0.0050	<0.0050	0.236	0.329	8.65	1.46
TB-SS-17 @ 4' (40.019654 / -104.733811)	11/16/23	4	0.6	<0.0020	<0.0050	<0.0050	<0.010	<0.50	25	12	<0.0050	<0.0050	0.308	0.262	9.22	0.627
TB-SS-18 @ 4' (40.019674 / -104.733810)	11/16/23	4	0.5	<0.0020	<0.0050	<0.0050	<0.010	<0.50	23	10	<0.0050	<0.0050	0.224	0.624	9.16	0.812
TB-SS-19 @ 4' (40.019654 / -104.733769)	11/16/23	4	0.6	<0.0020	<0.0050	<0.0050	<0.010	<0.50	24	11	<0.0050	<0.0050	0.174	0.260	9.70	0.567
TB-SS-20 @ 4' (40.019674 / -104.733770)	11/16/23	4	0.7	<0.0020	<0.0050	<0.0050	<0.010	<0.50	27	10	<0.0050	<0.0050	0.298	0.278	9.54	0.572
TB-SS-21 @ 4' (40.019653 / -104.733726)	11/16/23	4	1.1	<0.0020	<0.0050	<0.0050	<0.010	<0.50	20	11	<0.0050	<0.0050	0.423	0.270	9.04	0.391
TB-SS-22 @ 4' (40.019674 / -104.733727)	11/16/23	4	0.8	<0.0020	<0.0050	<0.0050	<0.010	<0.50	14	14	<0.0050	<0.0050	0.416	0.324	8.91	0.642
TB-SS-23 @ 4' (40.019653 / -104.733681)	11/16/23	4	1.4	<0.0020	<0.0050	<0.0050	<0.010	<0.50	18	15	<0.0050	<0.0050	0.199	0.253	9.62	0.472
TB-SS-24 @ 4' (40.019675 / -104.733682)	11/16/23	4	1.1	<0.0020	<0.0050	<0.0050	<0.010	<0.50	23	14	<0.0050	<0.0050	0.173	0.186	9.74	0.298
TB-SS-25 @ 4' (40.019701 / -104.734065)	11/16/23	4	668.4	<0.0020	0.066	0.083	0.86	26	280	67	0.40	0.12	0.198	0.133	9.83	0.0456
Excavation confirmation samples																
CS-SS-01 @ 5' (40.019710 / -104.734067)	11/30/23	5	4.9	<0.0020	<0.0050	<0.0050	<0.010	<0.50	19	9.3	<0.0050	<0.0050	0.0394	0.285	9.14	1.94
CS-SS-02 @ 16' (40.019710 / -104.734067)	11/30/23	16	7.3	<0.0020	<0.0050	<0.0050	<0.010	<0.50	27	9.4	<0.0050	<0.0050	0.0406	0.311	8.67	2.13
CS-SS-03 @ 5' (40.019695 / -104.734109)	11/30/23	5	24.6	<0.0020	<0.0050	<0.0050	<0.010	<0.50	26	8.6	<0.0050	<0.0050	0.0386	0.299	8.63	2.01
CS-SS-04 @ 16' (40.019695 / -104.734109)	11/30/23	16	1.2	<0.0020	<0.0050	<0.0050	<0.010	<0.50	30	8.9	<0.0050	<0.0050	0.141	0.361	8.42	1.51
CS-SS-05 @ 5' (40.019658 / -104.734110)	11/30/23	5	12.8	<0.0020	<0.0050	<0.0050	<0.010	<0.50	33	11	<0.0050	<0.0050	0.0945	0.331	8.40	1.03
CS-SS-06 @ 16' (40.019658 / -104.734110)	11/30/23	16	8.2	<0.0020	<0.0050	<0.0050	<0.010	<0.50	35	12	<0.0050	<0.0050	0.0563	0.286	8.38	0.820
CS-SS-07 @ 5' (40.019647 / -104.734069)	11/30/23	5	6.5	<0.0020	<0.0050	<0.0050	<0.010	<0.50	31	12	<0.0050	<0.0050	0.0162	0.212	9.05	2.90
CS-SS-08 @ 16' (40.019647 / -104.734069)	11/30/23	16	18.4	<0.0020	<0.0050	<0.0050	<0.010	<0.50	29	14	<0.0050	<0.0050	0.0151	0.179	8.85	1.50
CS-FS-01 @ 18' (40.019682 / -104.734068)	11/30/23	18	11.8	<0.0020	<0.0050	<0.0050	<0.010	<0.50	11	13	<0.0050	<0.0050	0.0125	0.211	8.96	2.74
CS-SS-09 @ 5' (40.019647 / -104.734003)	12/01/23	5	4.1	<0.0020	<0.0050	<0.0050	<0.010	0.045	18	27	<0.0050	<0.0050	0.0795	0.196	8.77	0.712
CS-SS-10 @ 16' (40.019647 / -104.734003)	12/01/23	16	5.6	<0.0020	<0.0050	<0.0050	<0.010	0.041	13	25	<0.0050	<0.0050	0.0739	0.256	8.94	3.72
CS-SS-11 @ 5' (40.019662 / -104.733973)	12/01/23	5	3.9	<0.0020	<0.0050	<0.0050	<0.010	0.047	24	18	<0.0050	<0.0050	0.145	0.442	8.45	0.915
CS-SS-12 @ 16' (40.019662 / -104.733973)	12/01/23	16	0.9	<0.0020	<0.0050	<0.0050	<0.010	0.045	15	19	<0.0050	<0.0050	<2.00	0.196	8.79	3.06
CS-SS-13 @ 5' (40.019695 / -104.733974)	12/01/23	5	8.6	<0.0020	<0.0050	<0.0050	<0.010	0.047	27	25	<0.0050	<0.0050	0.0365	0.174	8.86	0.633

TABLE 2
SOIL ANALYTICAL RESULTS SUMMARY
SAM 25H-M166
OIL RELEASE
40.019685 / -104.734069
NW¼ SW¼ SEC.25 T1N R66W 6PM
WELD COUNTY, COLORADO
LOCATION ID 453474
SPILL # 484966

Sample Location (Latitude/Longitude)	Date	Approximate Depth (feet)	PID Reading (ppm-v)	Benzene (mg/kg)	Toluene (mg/kg)	Ethylbenzene (mg/kg)	Total Xylenes (mg/kg)	TPH-GRO (mg/kg)	TPH-DRO (mg/kg)	TPH-RRO (mg/kg)	1,2,4-TMB (mg/kg)	1,3,5-TMB (mg/kg)	Boron (mg/L)	Specific Conductance (mmhos/cm)	pH (pH units)	SAR
ECMC Table 915-1 Residential Soil Screening Levels				1.20	490	5.8	58	500			30	27	2	<4	6-8.3	<6
ECMC Table 915-1 Protection of Groundwater Soil Screening Levels (GSSLs)				0.0026	0.69	0.78	9.9	--			0.0081	0.0087	--	--	--	--
Local Cleanup Levels				--	--	--	--	--			--	--	--	--	8.73	--
Excavation confirmation samples, continued.																
CS-SS-14 @ 16' (40.019695 / -104.733974)	12/01/23	16	6.8	<0.0020	<0.0050	<0.0050	<0.010	0.042	33	23	<0.0050	<0.0050	<2.00	0.208	8.74	3.29
CS-SS-15 @ 5' (40.019709 / -104.734007)	12/01/23	5	1.7	<0.0020	<0.0050	<0.0050	<0.010	0.044	31	22	<0.0050	<0.0050	0.100	0.421	8.40	0.808
CS-SS-16 @ 16' (40.019709 / -104.734007)	12/01/23	16	1.9	<0.0020	<0.0050	<0.0050	<0.010	0.041	25	23	<0.0050	<0.0050	<2.00	0.136	8.52	1.14
CS-FS-02 @ 18' (40.019679 / -104.734006)	12/01/23	18	3.1	<0.0020	<0.0050	<0.0050	<0.010	0.043	15	23	<0.0050	<0.0050	0.0956	0.253	8.40	3.19
ECMC = Energy & Carbon Management Commission mg/kg = milligrams per kilogram mmhos/cm = millimhos per centimeter mg/L = milligrams per liter SAR = Sodium Adsorption Ratio PID = Photoionization Detector ppm-v = parts per million by volume Note: Values presented with a less than symbol (<) did not contain concentrations at or above the laboratory MDL and/or reporting limit. Note: Values presented in highlighted BOLD contained concentrations exceeding ECMC Table 915-1 Regulatory Limits and backgrounds, where applicable. Bold values exceed Table 915-1 regulatory limits. Values presented with asterisk (*) exceed Table 915-1 GSSLs																
NA - Not Analyzed TPH-GRO = Total Petroleum Hydrocarbons - Gasoline Range Organics TPH-DRO = Total Petroleum Hydrocarbons - Diesel Range Organics TPH-RRO = Total Petroleum Hydrocarbons - Residual Range Organics 1,2,4-TMB = 1,2,4-Trimethylbenzene 1,3,5-TMB = 1,3,5-Trimethylbenzene MDL = Minimum Detection Limits																

TABLE 3
PAH ANALYTICAL RESULTS SUMMARY
SAM 25H-M166
OIL RELEASE
40.019685 / -104.734069
NW¼ SW¼ SEC.25 T1N R66W 6PM
WELD COUNTY, COLORADO
LOCATION ID 453474
SPILL # 484966

Sample Location (Latitude/Longitude)	Date	Approximate Depth (feet)	PID Reading (ppm-v)	1-Methyl- naphthalene (mg/kg)	2-Methyl- naphthalene (mg/kg)	Acenaphthene (mg/kg)	Anthracene (mg/kg)	Benzo(a)- anthracene (mg/kg)	Benzo(a)- pyrene (mg/kg)	Benzo(b)- fluoranthene (mg/kg)	Benzo(k)- fluoranthene (mg/kg)	Chrysene (mg/kg)	Dibenzo(a,h)- anthracene (mg/kg)	Fluoranthene (mg/kg)	Fluorene (mg/kg)	Indeno(1,2,3- cd)-pyrene (mg/kg)	Naphthalene (mg/kg)	Pyrene (mg/kg)
ECMC Table 915-1 Residential Soil Screening Levels				18	24	360	1,800	1.1	0.11	1.1	11	110	0.11	240	240	1.1	2	180
ECMC Table 915-1 Protection of Groundwater Soil Screening Levels (GSSLs)				0.006	0.019	0.55	5.8	0.011	0.24	0.3	2.9	9	0.096	8.9	0.54	0.98	0.0038	1.3
Waste characterization sample																		
WC-01 @ 4.5' (40.019689 / -104.734067)	09/08/23	4.5	4209	7.35*	18.3*	0.108	<0.00500	0.328*	0.0178	0.0329	0.00630	0.171	<0.00500	<0.00500	1.16*	<0.00500	0.044*	0.339
Release delineation samples																		
HA-SS-01 @ 10' (40.019684 / -104.734070)	09/08/23	10	3314	7.26*	10.5*	<0.00500	<0.00500	0.119*	<0.00500	<0.00500	<0.00500	0.142	<0.00500	0.0619	0.0635	<0.00500	2.2	0.120
HA-SS-02 @ 4' (40.019741 / -104.734053)	09/08/23	4	155	<0.00500	<0.00500	<0.00500	<0.00500	<0.00500	<0.00500	<0.00500	<0.00500	<0.00500	<0.00500	<0.00500	<0.00500	<0.00500	<0.0038	<0.00500
HA-SS-03 @ 1' (40.019739 / -104.733968)	09/08/23	1	184.8	<0.00500	<0.00500	<0.00500	<0.00500	<0.00500	<0.00500	<0.00500	<0.00500	<0.00500	<0.00500	<0.00500	<0.00500	<0.00500	<0.0038	<0.00500
HA-SS-04 @ 5' (40.019680 / -104.733984)	09/08/23	5	265.7	<0.00500	<0.00500	<0.00500	<0.00500	<0.00500	<0.00500	<0.00500	<0.00500	<0.00500	<0.00500	<0.00500	<0.00500	<0.00500	<0.0038	<0.00500
HA-SS-05 @ 4' (40.019654 / -104.733969)	09/08/23	4	12.4	<0.00500	<0.00500	<0.00500	<0.00500	<0.00500	<0.00500	<0.00500	<0.00500	<0.00500	<0.00500	<0.00500	<0.00500	<0.00500	<0.0038	<0.00500
HA-SS-06 @ 3' (40.019657 / -104.734008)	09/08/23	3	23.7	<0.00500	<0.00500	<0.00500	<0.00500	<0.00500	<0.00500	<0.00500	<0.00500	<0.00500	<0.00500	<0.00500	<0.00500	<0.00500	<0.0038	<0.00500
HA-SS-07 @ 2' (40.019658 / -104.734049)	09/08/23	2	27.9	<0.00500	<0.00500	<0.00500	<0.00500	<0.00500	<0.00500	<0.00500	<0.00500	<0.00500	<0.00500	<0.00500	<0.00500	<0.00500	<0.0038	<0.00500
HA-SS-08 @ 3' (40.019659 / -104.734092)	09/08/23	3	19.2	<0.00500	<0.00500	<0.00500	<0.00500	<0.00500	<0.00500	<0.00500	<0.00500	<0.00500	<0.00500	<0.00500	<0.00500	<0.00500	<0.0038	<0.00500
Additional release delineation samples																		
HA-SS-09 @ 15' (40.019655 / -104.734104)	10/26/23	15	33.1	<0.00500	<0.00500	<0.00500	<0.00500	<0.00500	<0.00500	<0.00500	<0.00500	<0.00500	<0.00500	<0.00500	<0.00500	<0.00500	<0.0038	<0.00500
HA-SS-10 @ 15' (40.019704 / -104.734103)	10/26/23	15	40.0	<0.00500	<0.00500	<0.00500	<0.00500	<0.00500	<0.00500	<0.00500	<0.00500	<0.00500	<0.00500	<0.00500	<0.00500	<0.00500	<0.0038	<0.00500
HA-SS-11 @ 15' (40.019706 / -104.734043)	10/26/23	15	72.5	<0.00500	<0.00500	<0.00500	<0.00500	<0.00500	<0.00500	<0.00500	<0.00500	<0.00500	<0.00500	<0.00500	<0.00500	<0.00500	<0.0038	<0.00500
HA-SS-12 @ 15' (40.019703 / -104.733980)	10/26/23	15	12.7	<0.00500	<0.00500	<0.00500	<0.00500	<0.00500	<0.00500	<0.00500	<0.00500	<0.00500	<0.00500	<0.00500	<0.00500	<0.00500	<0.0038	<0.00500
HA-SS-13 @ 15' (40.019656 / -104.733980)	10/26/23	15	8.5	<0.00500	<0.00500	<0.00500	<0.00500	<0.00500	<0.00500	<0.00500	<0.00500	<0.00500	<0.00500	<0.00500	<0.00500	<0.00500	<0.0038	<0.00500
HA-SS-14 @ 15' (40.019655 / -104.734040)	10/26/23	15	10.1	<0.00500	<0.00500	<0.00500	<0.00500	<0.00500	<0.00500	<0.00500	<0.00500	<0.00500	<0.00500	<0.00500	<0.00500	<0.00500	<0.0038	<0.00500
HA-SS-15 @ 15' (40.019587 / -104.734123)	10/26/23	15	3.9	<0.00500	<0.00500	<0.00500	<0.00500	<0.00500	<0.00500	<0.00500	<0.00500	<0.00500	<0.00500	<0.00500	<0.00500	<0.00500	<0.0038	<0.00500
HA-SS-16 @ 15' (40.019631 / -104.734176)	10/26/23	15	2.6	<0.00500	<0.00500	<0.00500	<0.00500	<0.00500	<0.00500	<0.00500	<0.00500	<0.00500	<0.00500	<0.00500	<0.00500	<0.00500	<0.0038	<0.00500
Facility change assessment samples																		
TB-SS-01 @ 4' (40.019657 / -104.734154)	11/16/23	4	1.4	<0.00500	<0.00500	<0.00500	<0.00500	<0.00500	<0.00500	<0.00500	<0.00500	<0.00500	<0.00500	<0.00500	<0.00500	<0.00500	<0.0038	<0.00500
TB-SS-02 @ 4' (40.019673 / -104.734152)	11/16/23	4	1.7	<0.00500	<0.00500	<0.00500	<0.00500	<0.00500	<0.00500	<0.00500	<0.00500	<0.00500	<0.00500	<0.00500	<0.00500	<0.00500	<0.0038	<0.00500
TB-SS-03 @ 4' (40.019655 / -104.734107)	11/16/23	4	2.4	<0.00500	<0.00500	<0.00500	<0.00500	0.0106	<0.00500	<0.00500	<0.00500	0.00547	<0.00500	<0.00500	0.00843	<0.00500	<0.0038	<0.00500
TB-SS-04 @ 4' (40.019672 / -104.734106)	11/16/23	4	1.9	<0.00500	<0.00500	<0.00500	<0.00500	0.00796	<0.00500	<0.00500	<0.00500	<0.00500	<0.00500	<0.00500	0.00686	<0.00500	<0.0038	<0.00500
TB-SS-05 @ 4' (40.019655 / -104.734067)	11/16/23	4	17.6	0.0319*	0.0305*	<0.00500	<0.00500	0.00531	<0.00500	<0.00500	<0.00500	<0.00500	<0.00500	<0.00500	0.0132	<0.00500	<0.0038	<0.00500
TB-SS-06 @ 4' (40.019673 / -104.734069)	11/16/23	4	21.4	0.549*	0.498*	0.0173	<0.00500	0.0193*	<0.00500	<0.00500	<0.00500	0.0125	<0.00500	0.00526	0.0185	<0.00500	<0.0038	0.00929
TB-SS-07 @ 4' (40.019655 / -104.734027)	11/16/23	4	25.9	0.0220*	0.0317*	<0.00500	<0.00500	<0.00500	<0.00500	<0.00500	<0.00500	<0.00500	<0.00500	<0.00500	0.00639	<0.00500	<0.0038	<0.00500
TB-SS-08 @ 4' (40.019674 / -104.734027)	11/16/23	4	23.6	0.0358*	0.0503*	<0.00500	<0.00500	<0.00500	<0.00500	<0.00500	<0.00500	<0.00500	<0.00500	<0.00500	0.00893	<0.00500	<0.0038	<0.00500
TB-SS-09 @ 4' (40.019654 / -104.733982)	11/16/23	4	1.6	<0.00500	<0.00500	<0.00500	<0.00500	<0.00500	<0.00500	<0.00500	<0.00500	<0.00500	<0.00500	<0.00500	<0.00500	<0.00500	<0.0038	<0.00500
TB-SS-10 @ 4' (40.019675 / -104.733984)	11/16/23	4	1.2	<0.00500	<0.00500	<0.00500	<0.00500	<0.00500	<0.00500	<0.00500	<0.00500	<0.00500	<0.00500	<0.00500	<0.00500	<0.00500	<0.0038	<0.00500
TB-SS-11 @ 4' (40.019654 / -104.733939)	11/16/23	4	0.9	<0.00500	<0.00500	<0.00500	<0.00500	<0.00500	<0.00500	<0.00500	<0.00500	<0.00500	<0.00500	<0.00500	<0.00500	<0.00500	<0.0038	<0.00500
TB-SS-12 @ 4' (40.019676 / -104.733939)	11/16/23	4	1.2	<0.00500	<0.00500	<0.00500	<0.00500	<0.00500	<0.00500	<0.00500	<0.00500	<0.00500	<0.00500	<0.00500	<0.00500	<0.00500	<0.0038	<0.00500

TABLE 3
PAH ANALYTICAL RESULTS SUMMARY
SAM 25H-M166
OIL RELEASE
40.019685 / -104.734069
NW¼ SW¼ SEC.25 T1N R66W 6PM
WELD COUNTY, COLORADO
LOCATION ID 453474
SPILL # 484966

Sample Location (Latitude/Longitude)	Date	Approximate Depth (feet)	PID Reading (ppm-v)	1-Methyl- naphthalene (mg/kg)	2-Methyl- naphthalene (mg/kg)	Acenaphthene (mg/kg)	Anthracene (mg/kg)	Benzo(a)- anthracene (mg/kg)	Benzo(a)- pyrene (mg/kg)	Benzo(b)- fluoranthene (mg/kg)	Benzo(k)- fluoranthene (mg/kg)	Chrysene (mg/kg)	Dibenzo(a,h)- anthracene (mg/kg)	Fluoranthene (mg/kg)	Fluorene (mg/kg)	Indeno(1,2,3- cd)-pyrene (mg/kg)	Naphthalene (mg/kg)	Pyrene (mg/kg)
ECMC Table 915-1 Residential Soil Screening Levels				18	24	360	1,800	1.1	0.11	1.1	11	110	0.11	240	240	1.1	2	180
ECMC Table 915-1 Protection of Groundwater Soil Screening Levels (GSSLs)				0.006	0.019	0.55	5.8	0.011	0.24	0.3	2.9	9	0.096	8.9	0.54	0.98	0.0038	1.3
Facility change assessment samples, continued.																		
TB-SS-13 @ 4' (40.019653 / -104.733896)	11/16/23	4	0.9	<0.00500	<0.00500	<0.00500	<0.00500	<0.00500	<0.00500	<0.00500	<0.00500	<0.00500	<0.00500	<0.00500	<0.00500	<0.00500	<0.0038	<0.00500
TB-SS-14 @ 4' (40.019674 / -104.733896)	11/16/23	4	0.8	<0.00500	<0.00500	<0.00500	<0.00500	<0.00500	<0.00500	<0.00500	<0.00500	<0.00500	<0.00500	<0.00500	<0.00500	<0.00500	<0.0038	<0.00500
TB-SS-15 @ 4' (40.019655 / -104.733854)	11/16/23	4	1.2	<0.00500	<0.00500	<0.00500	<0.00500	<0.00500	<0.00500	<0.00500	<0.00500	<0.00500	<0.00500	<0.00500	<0.00500	<0.00500	<0.0038	<0.00500
TB-SS-16 @ 4' (40.019676 / -104.733854)	11/16/23	4	0.7	<0.00500	<0.00500	<0.00500	<0.00500	<0.00500	<0.00500	<0.00500	<0.00500	<0.00500	<0.00500	<0.00500	<0.00500	<0.00500	<0.0038	<0.00500
TB-SS-17 @ 4' (40.019654 / -104.733811)	11/16/23	4	0.6	<0.00500	<0.00500	<0.00500	<0.00500	<0.00500	<0.00500	<0.00500	<0.00500	<0.00500	<0.00500	<0.00500	<0.00500	<0.00500	<0.0038	<0.00500
TB-SS-18 @ 4' (40.019674 / -104.733810)	11/16/23	4	0.5	<0.00500	<0.00500	<0.00500	<0.00500	<0.00500	<0.00500	<0.00500	<0.00500	<0.00500	<0.00500	<0.00500	<0.00500	<0.00500	<0.0038	<0.00500
TB-SS-19 @ 4' (40.019654 / -104.733769)	11/16/23	4	0.6	<0.00500	<0.00500	<0.00500	<0.00500	<0.00500	<0.00500	<0.00500	<0.00500	<0.00500	<0.00500	<0.00500	<0.00500	<0.00500	<0.0038	<0.00500
TB-SS-20 @ 4' (40.019674 / -104.733770)	11/16/23	4	0.7	<0.00500	<0.00500	<0.00500	<0.00500	<0.00500	<0.00500	<0.00500	<0.00500	<0.00500	<0.00500	<0.00500	<0.00500	<0.00500	<0.0038	<0.00500
TB-SS-21 @ 4' (40.019653 / -104.733726)	11/16/23	4	1.1	<0.00500	<0.00500	<0.00500	<0.00500	<0.00500	<0.00500	<0.00500	<0.00500	<0.00500	<0.00500	<0.00500	<0.00500	<0.00500	<0.0038	<0.00500
TB-SS-22 @ 4' (40.019674 / -104.733727)	11/16/23	4	0.8	<0.00500	<0.00500	<0.00500	<0.00500	<0.00500	<0.00500	<0.00500	<0.00500	<0.00500	<0.00500	<0.00500	<0.00500	<0.00500	<0.0038	<0.00500
TB-SS-23 @ 4' (40.019653 / -104.733681)	11/16/23	4	1.4	<0.00500	<0.00500	<0.00500	<0.00500	<0.00500	<0.00500	<0.00500	<0.00500	<0.00500	<0.00500	<0.00500	<0.00500	<0.00500	<0.0038	<0.00500
TB-SS-24 @ 4' (40.019675 / -104.733682)	11/16/23	4	1.1	<0.00500	<0.00500	<0.00500	<0.00500	<0.00500	<0.00500	<0.00500	<0.00500	<0.00500	<0.00500	<0.00500	<0.00500	<0.00500	<0.0038	<0.00500
TB-SS-25 @ 4' (40.019701 / -104.734065)	11/16/23	4	668.4	0.123*	0.332*	<0.00500	<0.00500	0.00769	<0.00500	<0.00500	<0.00500	<0.00500	<0.00500	<0.00500	0.0227	<0.00500	0.077*	<0.00500
Excavation confirmation samples																		
CS-SS-01 @ 5' (40.019710 / -104.734067)	11/30/23	5	4.9	<0.00500	<0.00500	<0.00500	<0.00500	<0.00500	<0.00500	<0.00500	<0.00500	<0.00500	<0.00500	<0.00500	<0.00500	<0.00500	<0.0038	<0.00500
CS-SS-02 @ 16' (40.019710 / -104.734067)	11/30/23	16	7.3	<0.00500	<0.00500	<0.00500	<0.00500	<0.00500	<0.00500	<0.00500	<0.00500	<0.00500	<0.00500	<0.00500	<0.00500	<0.00500	<0.0038	<0.00500
CS-SS-03 @ 5' (40.019695 / -104.734109)	11/30/23	5	24.6	<0.00500	<0.00500	<0.00500	<0.00500	<0.00500	<0.00500	<0.00500	<0.00500	<0.00500	<0.00500	<0.00500	<0.00500	<0.00500	<0.0038	<0.00500
CS-SS-04 @ 16' (40.019695 / -104.734109)	11/30/23	16	1.2	<0.00500	<0.00500	<0.00500	<0.00500	<0.00500	<0.00500	<0.00500	<0.00500	<0.00500	<0.00500	<0.00500	<0.00500	<0.00500	<0.0038	<0.00500
CS-SS-05 @ 5' (40.019658 / -104.734110)	11/30/23	5	12.8	<0.00500	<0.00500	<0.00500	<0.00500	<0.00500	<0.00500	<0.00500	<0.00500	<0.00500	<0.00500	<0.00500	<0.00500	<0.00500	<0.0038	<0.00500
CS-SS-06 @ 16' (40.019658 / -104.734110)	11/30/23	16	8.2	<0.00500	<0.00500	<0.00500	<0.00500	<0.00500	<0.00500	<0.00500	<0.00500	<0.00500	<0.00500	<0.00500	<0.00500	<0.00500	<0.0038	<0.00500
CS-SS-07 @ 5' (40.019647 / -104.734069)	11/30/23	5	6.5	<0.00500	<0.00500	<0.00500	<0.00500	<0.00500	<0.00500	<0.00500	<0.00500	<0.00500	<0.00500	<0.00500	<0.00500	<0.00500	<0.0038	<0.00500
CS-SS-08 @ 16' (40.019647 / -104.734069)	11/30/23	16	18.4	<0.00500	<0.00500	<0.00500	<0.00500	<0.00500	<0.00500	<0.00500	<0.00500	<0.00500	<0.00500	<0.00500	<0.00500	<0.00500	<0.0038	<0.00500
CS-FS-01 @ 18' (40.019682 / -104.734068)	11/30/23	18	11.8	<0.00500	<0.00500	<0.00500	<0.00500	<0.00500	<0.00500	<0.00500	<0.00500	<0.00500	<0.00500	<0.00500	<0.00500	<0.00500	<0.0038	<0.00500
CS-SS-09 @ 5' (40.019647 / -104.734003)	12/01/23	5	4.1	<0.00500	<0.00500	<0.00500	<0.00500	<0.00500	<0.00500	<0.00500	<0.00500	<0.00500	<0.00500	<0.00500	<0.00500	<0.00500	<0.0038	<0.00500
CS-SS-10 @ 16' (40.019647 / -104.734003)	12/01/23	16	5.6	<0.00500	<0.00500	<0.00500	<0.00500	<0.00500	<0.00500	<0.00500	<0.00500	<0.00500	<0.00500	<0.00500	<0.00500	<0.00500	<0.0038	<0.00500
CS-SS-11 @ 5' (40.019662 / -104.733973)	12/01/23	5	3.9	<0.00500	<0.00500	<0.00500	<0.00500	<0.00500	<0.00500	<0.00500	<0.00500	<0.00500	<0.00500	<0.00500	<0.00500	<0.00500	<0.0038	<0.00500
CS-SS-12 @ 16' (40.019662 / -104.733973)	12/01/23	16	0.9	<0.00500	<0.00500	<0.00500	<0.00500	<0.00500	<0.00500	<0.00500	<0.00500	<0.00500	<0.00500	<0.00500	<0.00500	<0.00500	<0.0038	<0.00500
CS-SS-13 @ 5' (40.019695 / -104.733974)	12/01/23	5	8.6	<0.00500	<0.00500	<0.00500	<0.00500	<0.00500	<0.00500	<0.00500	<0.00500	<0.00500	<0.00500	<0.00500	<0.00500	<0.00500	<0.0038	<0.00500
CS-SS-14 @ 16' (40.019695 / -104.733974)	12/01/23	16	6.8	<0.00500	<0.00500	<0.00500	<0.00500	<0.00500	<0.00500	<0.00500	<0.00500	<0.00500	<0.00500	<0.00500	<0.00500	<0.00500	<0.0038	<0.00500

TABLE 3
PAH ANALYTICAL RESULTS SUMMARY
SAM 25H-M166
OIL RELEASE
40.019685 / -104.734069
NW¼ SW¼ SEC.25 T1N R66W 6PM
WELD COUNTY, COLORADO
LOCATION ID 453474
SPILL # 484966

Sample Location (Latitude/Longitude)	Date	Approximate Depth (feet)	PID Reading (ppm-v)	1-Methyl- naphthalene (mg/kg)	2-Methyl- naphthalene (mg/kg)	Acenaphthene (mg/kg)	Anthracene (mg/kg)	Benzo(a)- anthracene (mg/kg)	Benzo(a)- pyrene (mg/kg)	Benzo(b)- fluoranthene (mg/kg)	Benzo(k)- fluoranthene (mg/kg)	Chrysene (mg/kg)	Dibenzo(a,h)- anthracene (mg/kg)	Fluoranthene (mg/kg)	Fluorene (mg/kg)	Indeno(1,2,3- cd)-pyrene (mg/kg)	Naphthalene (mg/kg)	Pyrene (mg/kg)
ECMC Table 915-1 Residential Soil Screening Levels				18	24	360	1,800	1.1	0.11	1.1	11	110	0.11	240	240	1.1	2	180
ECMC Table 915-1 Protection of Groundwater Soil Screening Levels (GSSLs)				0.006	0.019	0.55	5.8	0.011	0.24	0.3	2.9	9	0.096	8.9	0.54	0.98	0.0038	1.3
Excavation confirmation samples, continued.																		
CS-SS-15 @ 5' (40.019709 / -104.734007)	12/01/23	5	1.7	<0.00500	<0.00500	<0.00500	<0.00500	<0.00500	<0.00500	<0.00500	<0.00500	<0.00500	<0.00500	<0.00500	<0.00500	<0.00500	<0.0038	<0.00500
CS-SS-16 @ 16' (40.019709 / -104.734007)	12/01/23	16	1.9	<0.00500	<0.00500	<0.00500	<0.00500	<0.00500	<0.00500	<0.00500	<0.00500	<0.00500	<0.00500	<0.00500	<0.00500	<0.00500	<0.0038	<0.00500
CS-FS-02 @ 18' (40.019679 / -104.734006)	12/01/23	18	3.1	<0.00500	<0.00500	<0.00500	<0.00500	<0.00500	<0.00500	<0.00500	<0.00500	<0.00500	<0.00500	<0.00500	<0.00500	<0.00500	<0.0038	<0.00500
ECMC = Energy & Carbon Management Commission mg/kg = milligrams per kilogram PID = Photoionization Detector ppm-v = parts per million by volume Note: Values presented with a less than symbol (<) did not contain concentrations at or above the laboratory reporting limit. Note: Values presented in highlighted BOLD contained concentrations exceeding ECMC Table 915-1 Regulatory Limits. Values presented with asterisk (*) exceed ECMC Table 915-1 GSSLs																		

TABLE 4
METALS ANALYTICAL RESULTS SUMMARY
SAM 25H-M166
OIL RELEASE
40.019685 / -104.734069
NW¼ SW¼ SEC.25 T1N R66W 6PM
WELD COUNTY, COLORADO
LOCATION ID 453474
SPILL # 484966

Sample Location (Latitude/Longitude)	Date	Approximate Depth (feet)	Arsenic (mg/kg)	Barium (mg/kg)	Cadmium (mg/kg)	Hexavalent Chromium (mg/kg)	Copper (mg/kg)	Lead (mg/kg)	Nickel (mg/kg)	Selenium (mg/kg)	Silver (mg/kg)	Zinc (mg/kg)
ECMC Table 915-1 Residential Soil Screening Levels			0.68***	15,000	71	0.3**	3,100	400	1,500	390	390	23,000
ECMC Table 915-1 Protection of Groundwater Soil Screening Levels (GSSLs)			0.29***	82	0.38	0.00067**	46	14	26	0.26	0.8	370
Local Cleanup Levels			5.64***	243*	--	0.1 to 1**	--	--	--	--	--	--
Waste characterization sample												
WC-01 @ 4.5' (40.019689 / -104.734067)	09/08/23	4.5	3.81***	145*	0.0575	<0.30**	2.54	4.72	3.79	<0.260	0.00475	12.7
Release delineation samples												
HA-SS-01 @ 10' (40.019684 / -104.734070)	09/08/23	10	2.06***	43.0	0.0394	<0.30**	1.79	5.82	3.15	<0.260	0.00269	16.7
HA-SS-02 @ 4' (40.019741 / -104.734053)	09/08/23	4	2.22***	91.2*	0.102	<0.30**	4.17	3.38	3.57	<0.260	0.0195	10.8
HA-SS-03 @ 1' (40.019739 / -104.733968)	09/08/23	1	3.63***	132*	0.141	<0.30**	4.36	5.65	4.67	<0.260	0.0237	14.7
HA-SS-04 @ 5' (40.019680 / -104.733984)	09/08/23	5	3.47***	146*	0.168	<0.30**	4.82	7.65	5.85	<0.260	0.0360	18.0
HA-SS-05 @ 4' (40.019654 / -104.733969)	09/08/23	4	3.46***	147*	0.238	<0.30**	4.67	8.32	6.71	<0.260	0.0461	15.9
HA-SS-06 @ 3' (40.019657 / -104.734008)	09/08/23	3	3.39***	107*	0.101	<0.30**	4.96	6.78	6.06	<0.260	0.0548	15.2
HA-SS-07 @ 2' (40.019658 / -104.734049)	09/08/23	2	4.00***	115*	0.116	<0.30**	5.43	8.04	7.50	<0.260	0.0541	18.2
HA-SS-08 @ 3' (40.019659 / -104.734092)	09/08/23	3	4.46***	192*	0.161	<0.30**	6.09	8.65	9.02	<0.260	0.0733	17.6
Background comparison samples												
Background-01 @ 5' (40.019560 / -104.733503)	09/08/23	5	1.01***	52.0	0.0811	<0.30**	2.31	4.30	2.38	<0.260	0.0133	9.95
Background-02 @ 5' (40.019613 / -104.733506)	09/08/23	5	0.894***	54.7	0.0755	<0.30**	2.22	3.87	2.38	<0.260	0.0152	9.14
Background-03 @ 5' (40.019686 / -104.733501)	09/08/23	5	1.08***	55.2	0.0850	<0.30**	2.48	4.99	2.66	<0.260	0.0222	10.4
Background-04 @ 8' (40.019591 / -104.733508)	09/08/23	8	1.43***	51.0	0.119	<0.30**	2.56	5.95	2.89	<0.260	0.0195	12.5
Background-05 @ 8' (40.019655 / -104.733501)	09/08/23	8	1.21***	45.7	0.0919	<0.30**	2.36	4.97	2.80	<0.260	0.0154	10.8
Background-06 @ 8' (40.019727 / -104.733498)	09/08/23	8	1.20***	51.9	0.0803	<0.30**	2.41	4.84	2.79	<0.260	0.0175	11.6

TABLE 4
METALS ANALYTICAL RESULTS SUMMARY
SAM 25H-M166
OIL RELEASE
40.019685 / -104.734069
NW¼ SW¼ SEC.25 T1N R66W 6PM
WELD COUNTY, COLORADO
LOCATION ID 453474
SPILL # 484966

Sample Location (Latitude/Longitude)	Date	Approximate Depth (feet)	Arsenic (mg/kg)	Barium (mg/kg)	Cadmium (mg/kg)	Hexavalent Chromium (mg/kg)	Copper (mg/kg)	Lead (mg/kg)	Nickel (mg/kg)	Selenium (mg/kg)	Silver (mg/kg)	Zinc (mg/kg)
ECMC Table 915-1 Residential Soil Screening Levels			0.68***	15,000	71	0.3**	3,100	400	1,500	390	390	23,000
ECMC Table 915-1 Protection of Groundwater Soil Screening Levels (GSSLs)			0.29***	82	0.38	0.00067**	46	14	26	0.26	0.8	370
Local Cleanup Levels			5.64***	243*	--	0.1 to 1**	--	--	--	--	--	--
Additional release delineation samples												
HA-SS-09 @ 15' (40.019655 / -104.734104)	10/26/23	15	1.59***	28.6	0.0472	<0.30**	1.63	4.81	3.41	<0.260	0.00347	16.8
HA-SS-10 @ 15' (40.019704 / -104.734103)	10/26/23	15	2.17***	30.5	0.0453	<0.30**	2.16	5.92	3.77	<0.260	0.00398	20.2
HA-SS-11 @ 15' (40.019706 / -104.734043)	10/26/23	15	2.85***	50.6	0.0760	<0.30**	2.44	6.84	4.14	<0.260	0.00373	22.6
HA-SS-12 @ 15' (40.019703 / -104.733980)	10/26/23	15	1.93***	51.0	0.0592	<0.30**	1.57	4.00	2.61	<0.260	0.00512	13.1
HA-SS-13 @ 15' (40.019656 / -104.733980)	10/26/23	15	1.56***	51.8	0.0831	<0.30**	1.86	5.25	3.55	<0.260	0.00484	15.6
HA-SS-14 @ 15' (40.019655 / -104.734040)	10/26/23	15	1.51***	51.7	0.0712	<0.30**	1.79	5.38	3.25	<0.260	0.00434	15.3
HA-SS-15 @ 15' (40.019587 / -104.734123)	10/26/23	15	1.45***	36.0	0.0430	<0.30**	1.60	4.46	3.69	<0.260	0.00300	17.1
HA-SS-16 @ 15' (40.019631 / -104.734176)	10/26/23	15	2.05***	57.4	0.0624	<0.30**	2.12	6.12	5.42	<0.260	0.00406	22.2
Background comparison samples												
Background-07 @ 15' (40.019474 / -104.734341)	11/09/23	15	2.13***	67.1	0.0928	<0.30**	2.35	5.87	4.09	<0.260	0.00965	17.1
Background-08 @ 15' (40.019467 / -104.734152)	11/09/23	15	2.55***	96.2*	0.128	<0.30**	2.29	4.85	3.48	<0.260	0.0151	12.1
Background-09 @ 15' (40.019465 / -104.733955)	11/09/23	15	3.98***	140*	0.146	<0.30**	3.53	5.43	5.14	<0.260	0.0272	11.7
Background-10 @ 15' (40.019465 / -104.733705)	11/09/23	15	3.84***	137*	0.152	<0.30**	4.16	6.13	5.34	<0.260	0.0304	15.0
Background-11 @ 15' (40.019672 / -104.733507)	11/09/23	15	4.25***	194*	0.136	<0.30**	2.83	6.36	4.17	<0.260	0.0241	14.2
Background-12 @ 15' (40.019888 / -104.733476)	11/09/23	15	4.51***	115*	0.166	<0.30**	2.63	6.68	5.03	<0.260	0.00987	19.0
Background-13 @ 15' (40.019959 / -104.733494)	11/09/23	15	1.77***	107*	0.0787	<0.30**	2.05	5.85	3.78	<0.260	0.00612	16.9
Background-14 @ 15' (40.020041 / -104.733487)	11/09/23	15	3.56***	187*	0.161	<0.30**	3.58	5.41	4.80	<0.260	0.0218	15.2

TABLE 4
METALS ANALYTICAL RESULTS SUMMARY
SAM 25H-M166
OIL RELEASE
40.019685 / -104.734069
NW¼ SW¼ SEC.25 T1N R66W 6PM
WELD COUNTY, COLORADO
LOCATION ID 453474
SPILL # 484966

Sample Location (Latitude/Longitude)	Date	Approximate Depth (feet)	Arsenic (mg/kg)	Barium (mg/kg)	Cadmium (mg/kg)	Hexavalent Chromium (mg/kg)	Copper (mg/kg)	Lead (mg/kg)	Nickel (mg/kg)	Selenium (mg/kg)	Silver (mg/kg)	Zinc (mg/kg)
ECMC Table 915-1 Residential Soil Screening Levels			0.68***	15,000	71	0.3**	3,100	400	1,500	390	390	23,000
ECMC Table 915-1 Protection of Groundwater Soil Screening Levels (GSSLs)			0.29***	82	0.38	0.00067**	46	14	26	0.26	0.8	370
Local Cleanup Levels			5.64***	243*	--	0.1 to 1**	--	--	--	--	--	--
Facility change assessment samples												
TB-SS-01 @ 4' (40.019657 / -104.734154)	11/16/23	4	2.90***	140*	0.174	<0.30**	5.15	4.08	4.50	0.259	0.0269	17.4
TB-SS-02 @ 4' (40.019673 / -104.734152)	11/16/23	4	3.31***	137*	0.168	<0.30**	4.87	4.88	4.67	0.233	0.0257	18.1
TB-SS-03 @ 4' (40.019655 / -104.734107)	11/16/23	4	2.99***	103*	0.221	<0.30**	5.40	7.02	5.25	0.310*	0.0363	21.3
TB-SS-04 @ 4' (40.019672 / -104.734106)	11/16/23	4	3.43***	113*	0.234	<0.30**	5.87	8.87	5.73	0.272*	0.0437	21.1
TB-SS-05 @ 4' (40.019655 / -104.734067)	11/16/23	4	3.71***	107*	0.272	<0.30**	6.39	9.42	6.07	0.245	0.0515	21.1
TB-SS-06 @ 4' (40.019673 / -104.734069)	11/16/23	4	3.67***	109*	0.252	<0.30**	6.39	9.35	6.33	0.208	0.0486	22.0
TB-SS-07 @ 4' (40.019655 / -104.734027)	11/16/23	4	3.17***	109*	0.241	<0.30**	6.04	8.48	5.84	0.207	0.0463	19.8
TB-SS-08 @ 4' (40.019674 / -104.734027)	11/16/23	4	3.51***	107*	0.293	<0.30**	6.08	8.47	5.93	0.220	0.0427	20.7
TB-SS-09 @ 4' (40.019654 / -104.733982)	11/16/23	4	3.17***	99.4*	0.387	<0.30**	5.91	8.50	5.74	0.228	0.0452	19.5
TB-SS-10 @ 4' (40.019675 / -104.733984)	11/16/23	4	3.50***	117*	0.247	<0.30**	6.46	9.50	6.21	0.258	0.0496	21.3
TB-SS-11 @ 4' (40.019654 / -104.733939)	11/16/23	4	3.08***	95.5*	0.139	<0.30**	4.52	4.51	3.69	<0.260	0.0185	13.3
TB-SS-12 @ 4' (40.019676 / -104.733939)	11/16/23	4	3.21***	107*	0.169	<0.30**	4.31	4.72	4.30	<0.260	0.0213	14.1
TB-SS-13 @ 4' (40.019653 / -104.733896)	11/16/23	4	4.00***	149*	0.159	<0.30**	4.59	5.01	4.64	<0.260	0.0259	15.8
TB-SS-14 @ 4' (40.019674 / -104.733896)	11/16/23	4	3.94***	153*	0.165	<0.30**	4.76	4.98	4.73	<0.260	0.245	15.8
TB-SS-15 @ 4' (40.019655 / -104.733854)	11/16/23	4	242***	77.8	0.117	<0.30**	3.32	4.30	4.07	<0.260	0.0180	11.9
TB-SS-16 @ 4' (40.019676 / -104.733854)	11/16/23	4	3.00***	115*	0.151	<0.30**	4.28	5.43	4.87	<0.260	0.0232	14.8

TABLE 4
METALS ANALYTICAL RESULTS SUMMARY
SAM 25H-M166
OIL RELEASE
40.019685 / -104.734069
NW¼ SW¼ SEC.25 T1N R66W 6PM
WELD COUNTY, COLORADO
LOCATION ID 453474
SPILL # 484966

Sample Location (Latitude/Longitude)	Date	Approximate Depth (feet)	Arsenic (mg/kg)	Barium (mg/kg)	Cadmium (mg/kg)	Hexavalent Chromium (mg/kg)	Copper (mg/kg)	Lead (mg/kg)	Nickel (mg/kg)	Selenium (mg/kg)	Silver (mg/kg)	Zinc (mg/kg)
ECMC Table 915-1 Residential Soil Screening Levels			0.68***	15,000	71	0.3**	3,100	400	1,500	390	390	23,000
ECMC Table 915-1 Protection of Groundwater Soil Screening Levels (GSSLs)			0.29***	82	0.38	0.00067**	46	14	26	0.26	0.8	370
Local Cleanup Levels			5.64***	243*	--	0.1 to 1**	--	--	--	--	--	--
Facility change assessment samples, continued.												
TB-SS-17 @ 4' (40.019654 / -104.733811)	11/16/23	4	4.04***	144*	0.162	<0.30**	4.77	5.81	5.48	<0.260	0.0297	15.8
TB-SS-18 @ 4' (40.019674 / -104.733810)	11/16/23	4	3.13***	105*	0.136	<0.30**	4.34	5.38	4.99	<0.260	0.0241	14.8
TB-SS-19 @ 4' (40.019654 / -104.733769)	11/16/23	4	3.63***	132*	0.136	<0.30**	4.32	4.46	4.70	<0.260	0.0297	14.1
TB-SS-20 @ 4' (40.019674 / -104.733770)	11/16/23	4	2.98***	113*	0.136	<0.30**	4.02	4.13	4.39	<0.260	0.0278	13.8
TB-SS-21 @ 4' (40.019653 / -104.733726)	11/16/23	4	4.01***	161*	0.177	<0.30**	4.81	5.84	6.02	<0.260	0.0313	15.6
TB-SS-22 @ 4' (40.019674 / -104.733727)	11/16/23	4	3.56***	163*	0.172	<0.30**	4.73	4.98	5.31	<0.260	0.0337	14.7
TB-SS-23 @ 4' (40.019653 / -104.733681)	11/16/23	4	3.16***	113*	0.189	<0.30**	5.33	6.02	6.52	<0.260	0.0254	16.4
TB-SS-24 @ 4' (40.019675 / -104.733682)	11/16/23	4	3.13***	112*	0.155	<0.30**	4.81	5.50	5.46	<0.260	0.0290	16.1
TB-SS-25 @ 4' (40.019701 / -104.734065)	11/16/23	4	3.07***	131*	0.164	<0.30**	4.75	4.82	4.82	<0.260	0.0273	28.4
Excavation confirmation samples												
CS-SS-01 @ 5' (40.019710 / -104.734067)	11/30/23	5	3.50***	125*	0.179	<0.30**	3.02	5.26	4.74	<0.260	0.0187	12.6
CS-SS-02 @ 16' (40.019710 / -104.734067)	11/30/23	16	3.59***	109*	0.166	<0.30**	3.18	5.27	5.16	<0.260	0.0193	13.2
CS-SS-03 @ 5' (40.019695 / -104.734109)	11/30/23	5	4.26***	139*	0.190	<0.30**	3.67	5.81	5.52	<0.260	0.0211	14.9
CS-SS-04 @ 16' (40.019695 / -104.734109)	11/30/23	16	4.53***	195*	0.195	<0.30**	4.47	6.59	5.85	<0.260	0.0302	16.0
CS-SS-05 @ 5' (40.019658 / -104.734110)	11/30/23	5	3.50***	140*	0.142	<0.30**	3.73	4.49	4.59	<0.260	0.0218	12.4
CS-SS-06 @ 16' (40.019658 / -104.734110)	11/30/23	16	4.70***	179*	0.172	<0.30**	4.57	5.73	5.81	<0.260	0.0307	14.7
CS-SS-07 @ 5' (40.019647 / -104.734069)	11/30/23	5	1.49***	30.8	0.0613	<0.30**	1.41	5.55	3.06	<0.260	0.00306	17.0
CS-SS-08 @ 16' (40.019647 / -104.734069)	11/30/23	16	1.39***	30.3	0.0642	<0.30**	1.47	5.59	3.13	<0.260	0.00437	17.6
CS-FS-01 @ 18' (40.019682 / -104.734068)	11/30/23	18	1.38***	32.3	0.0664	<0.30**	1.46	5.92	3.27	<0.260	0.00349	17.7

TABLE 4
METALS ANALYTICAL RESULTS SUMMARY
SAM 25H-M166
OIL RELEASE
40.019685 / -104.734069
NW¼ SW¼ SEC.25 T1N R66W 6PM
WELD COUNTY, COLORADO
LOCATION ID 453474
SPILL # 484966

Sample Location (Latitude/Longitude)	Date	Approximate Depth (feet)	Arsenic (mg/kg)	Barium (mg/kg)	Cadmium (mg/kg)	Hexavalent Chromium (mg/kg)	Copper (mg/kg)	Lead (mg/kg)	Nickel (mg/kg)	Selenium (mg/kg)	Silver (mg/kg)	Zinc (mg/kg)
ECMC Table 915-1 Residential Soil Screening Levels			0.68***	15,000	71	0.3**	3,100	400	1,500	390	390	23,000
ECMC Table 915-1 Protection of Groundwater Soil Screening Levels (GSSLs)			0.29***	82	0.38	0.00067**	46	14	26	0.26	0.8	370
Local Cleanup Levels			5.64***	243*	--	0.1 to 1**	--	--	--	--	--	--
Excavation confirmation samples, continued.												
CS-SS-09 @ 5' (40.019647 / -104.734003)	12/01/23	5	0.966***	113*	0.0686	<0.30**	1.56	4.44	2.00	<0.260	0.0356	6.64
CS-SS-10 @ 16' (40.019647 / -104.734003)	12/01/23	16	0.905***	40.7	0.0212	<0.30**	0.846	5.39	1.75	<0.260	0.00573	10.3
CS-SS-11 @ 5' (40.019662 / -104.733973)	12/01/23	5	1.40***	154*	0.0884	<0.30**	2.21	5.49	2.58	<0.260	0.0309	8.69
CS-SS-12 @ 16' (40.019662 / -104.733973)	12/01/23	16	0.659***	93.9*	0.0427	<0.30**	0.815	6.06	2.12	<0.260	0.00490	8.75
CS-SS-13 @ 5' (40.019695 / -104.733974)	12/01/23	5	1.12***	113*	0.0817	<0.30**	1.63	4.36	2.16	<0.260	0.0334	7.02
CS-SS-14 @ 16' (40.019695 / -104.733974)	12/01/23	16	0.895***	52.0	0.0414	<0.30**	0.734	5.42	2.56	<0.260	0.00534	8.88
CS-SS-15 @ 5' (40.019709 / -104.734007)	12/01/23	5	1.34***	148*	0.0921	<0.30**	2.30	5.80	2.77	<0.260	0.0434	8.72
CS-SS-16 @ 16' (40.019709 / -104.734007)	12/01/23	16	1.26***	42.2	0.0379	<0.30**	0.927	5.34	1.80	<0.260	0.00402	9.38
CS-FS-02 @ 18' (40.019679 / -104.734006)	12/01/23	18	0.949***	38.3	0.0385	<0.30**	0.944	5.16	2.12	<0.260	0.00398	10.5
ECMC = Energy & Carbon Management Commission mg/kg = milligrams per kilogram Notes: Values presented with a less than symbol (<) did not contain concentrations at or above the laboratory reporting limit or minimum detection levels. Values presented in highlighted BOLD contained concentrations exceeding ECMC Table 915-1 Regulatory Limits and backgrounds, where applicable. Bold values exceed Table 915-1 regulatory limits. Values presented with asterisk (*) exceed Table 915-1 GSSLs **Achievable practical quantitative limits for Hexavalent Chromium in soils is in the range of 0.1 to 1 mg/kg. ***Local clean-up range (7.81 to 8.01 mg/kg) is 1.25*Background average (6.25 mg/kg) to background high (8.01 mg/kg)												

TABLE 5
RESIDUAL IMPACTS ANALYTICAL SUMMARY
SAM 25H-M166
OIL RELEASE
40.019685 / -104.734069
NW¼ SW¼ SEC.25 T1N R66W 6PM
WELD COUNTY, COLORADO
LOCATION ID 453474
SPILL # 484966

Sample Location (Latitude/Longitude)	Date	Approximate Depth (feet)	pH (pH units)
ECMC Table 915-1 Residential Soil Screening Levels			6-8.3
Local Cleanup Levels			8.73
Release delineation samples			
HA-SS-02 @ 4' (40.019741 / -104.734053)	09/08/23	4	9.09
HA-SS-03 @ 1' (40.019739 / -104.733968)	09/08/23	1	10.4
Facility change assessment samples			
TB-SS-01 @ 4' (40.019657 / -104.734154)	11/16/23	4	10.8
TB-SS-02 @ 4' (40.019673 / -104.734152)	11/16/23	4	10.8
TB-SS-11 @ 4' (40.019654 / -104.733939)	11/16/23	4	9.71
TB-SS-14 @ 4' (40.019674 / -104.733896)	11/16/23	4	9.59
TB-SS-15 @ 4' (40.019655 / -104.733854)	11/16/23	4	8.96
TB-SS-17 @ 4' (40.019654 / -104.733811)	11/16/23	4	9.22
TB-SS-18 @ 4' (40.019674 / -104.733810)	11/16/23	4	9.16
TB-SS-19 @ 4' (40.019654 / -104.733769)	11/16/23	4	9.70
TB-SS-20 @ 4' (40.019674 / -104.733770)	11/16/23	4	9.54
TB-SS-21 @ 4' (40.019653 / -104.733726)	11/16/23	4	9.04
TB-SS-22 @ 4' (40.019674 / -104.733727)	11/16/23	4	8.91

TABLE 5
RESIDUAL IMPACTS ANALYTICAL SUMMARY
SAM 25H-M166
OIL RELEASE
40.019685 / -104.734069
NW¼ SW¼ SEC.25 T1N R66W 6PM
WELD COUNTY, COLORADO
LOCATION ID 453474
SPILL # 484966

Sample Location (Latitude/Longitude)	Date	Approximate Depth (feet)	pH (pH units)
ECMC Table 915-1 Residential Soil Screening Levels			6-8.3
Local Cleanup Levels			8.73
Facility change assessment samples, continued.			
TB-SS-23 @ 4' (40.019653 / -104.733681)	11/16/23	4	9.62
TB-SS-24 @ 4' (40.019675 / -104.733682)	11/16/23	4	9.74
TB-SS-25 @ 4' (40.019701 / -104.734065)	11/16/23	4	9.83
Excavation confirmation samples			
CS-SS-01 @ 5' (40.019710 / -104.734067)	11/30/23	5	9.14
CS-SS-07 @ 5' (40.019647 / -104.734069)	11/30/23	5	9.05
CS-SS-08 @ 16' (40.019647 / -104.734069)	11/30/23	16	8.85
CS-FS-01 @ 18' (40.019682 / -104.734068)	11/30/23	18	8.96
CS-SS-09 @ 5' (40.019647 / -104.734003)	12/01/23	5	8.77
CS-SS-10 @ 16' (40.019647 / -104.734003)	12/01/23	16	8.94
CS-SS-12 @ 16' (40.019662 / -104.733973)	12/01/23	16	8.79
CS-SS-13 @ 5' (40.019695 / -104.733974)	12/01/23	5	8.86
CS-SS-14 @ 16' (40.019695 / -104.733974)	12/01/23	16	8.74

TABLE 5
RESIDUAL IMPACTS ANALYTICAL SUMMARY
SAM 25H-M166
OIL RELEASE
40.019685 / -104.734069
NW¼ SW¼ SEC.25 T1N R66W 6PM
WELD COUNTY, COLORADO
LOCATION ID 453474
SPILL # 484966

Sample Location (Latitude/Longitude)	Date	Approximate Depth (feet)	pH (pH units)
ECMC Table 915-1 Residential Soil Screening Levels			6-8.3
Local Cleanup Levels			8.73
Background comparison samples			
Background-07 @ 15' (40.019474 / -104.734341)	11/09/23	15	8.36
Background-08 @ 15' (40.019467 / -104.734152)	11/09/23	15	8.73
Background-09 @ 15' (40.019465 / -104.733955)	11/09/23	15	8.36
Background-12 @ 15' (40.019888 / -104.733476)	11/09/23	15	8.34
Background-14 @ 15' (40.020041 / -104.733487)	11/09/23	15	8.63
ECMC = Energy & Carbon Management Commission			
Note: Values presented in highlighted BOLD contained concentrations exceeding ECMC Table 915-1 Regulatory Limits and backgrounds, where applicable. Bold values exceed Table 915-1 regulatory limits.			

