

# PDC Energy Inc. DJ Basin



HEN 07N  
 Hen Pad  
 North American Datum 1983 , US State Plane 1983, Colorado Northern Zone  
 Ground Elevation: 4779.0  
 +N/-S +E/-W Northing Easting Latitude Longitude  
 0.0 0.0 1363745.58 3258630.75 40.328169 -104.572344  
 P272 - RKB 28.5' WELL @ 4807.5ft (P272 - RKB 28.5')

Hen Pad  
 HEN 07N  
 HEN 07N Final Surveys  
 9:34, November 28 2023



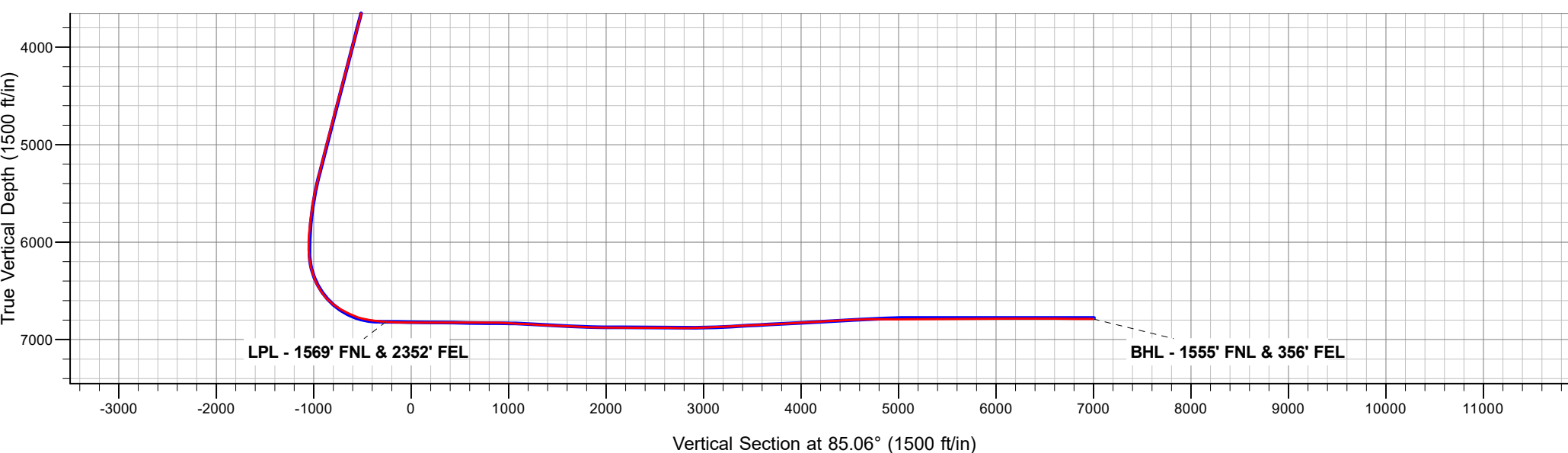
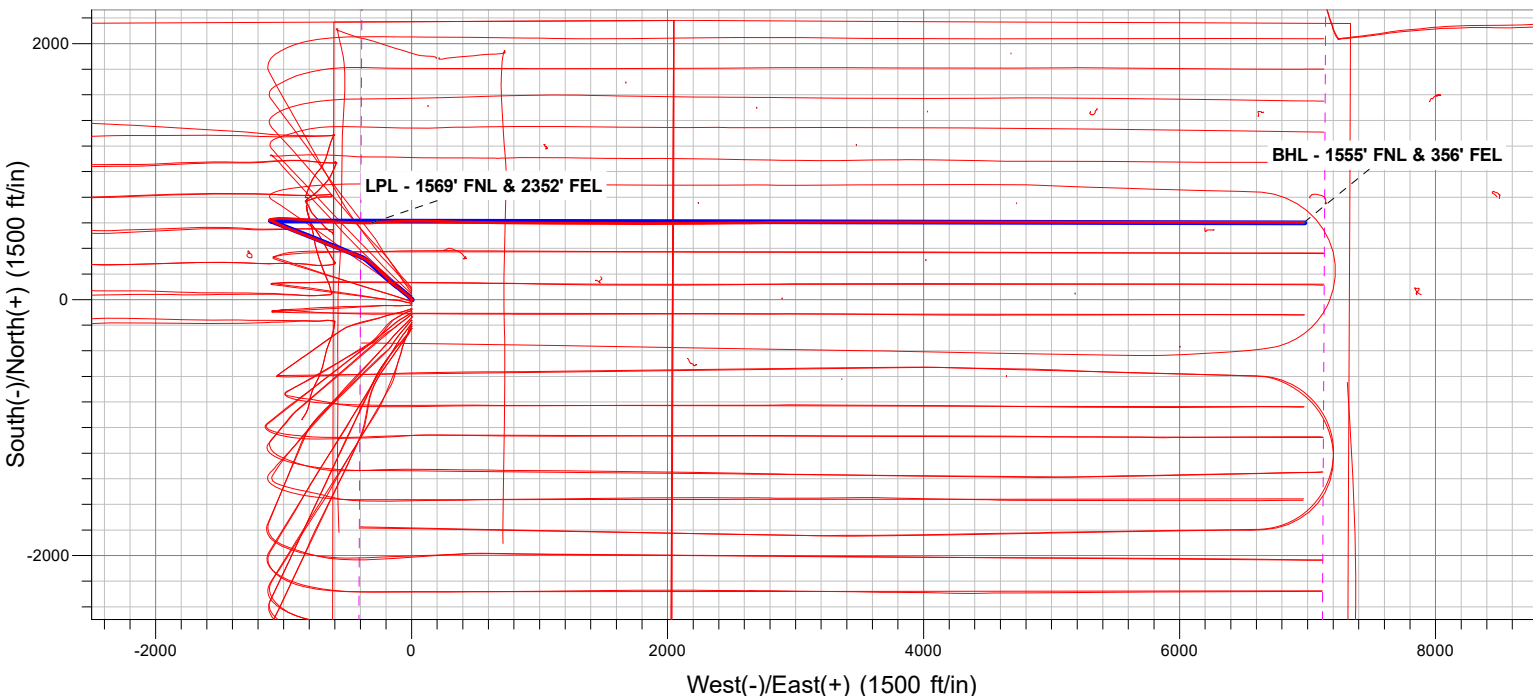
Azimuths to True North  
 Magnetic North: 7.68°

Magnetic Field  
 Strength: 51707.6nT  
 Dip Angle: 66.58°  
 Date: 08/21/2023  
 Model: HRGM

**ANNOTATIONS**

MD	TVD	Annotation
7466.0	6818.4	LPL - 1569' FNL & 2352' FEL
14756.0	6788.8	BHL - 1555' FNL & 356' FEL

**FINAL SURVEY**  
**Projected Bottom Hole Location**  
**14756' MD / 6788.8' TVD**  
**89.27° INC / 89.99° AZM**  
**1555' FNL / 356' FEL**



# **PDC Energy Inc. DJ Basin**

**SEC.8-T4N-R64W**

**Hen Pad**

**HEN 07N**

**HEN 07N**

**Design: HEN 07N Final Surveys**

## **Survey Report - Geographic**

**28 November, 2023**

# Ensign

## Survey Report - Geographic

<b>Company:</b> PDC Energy Inc. DJ Basin	<b>Local Co-ordinate Reference:</b> Well HEN 07N
<b>Project:</b> SEC.8-T4N-R64W	<b>TVD Reference:</b> WELL @ 4807.5ft (P272 - RKB 28.5')
<b>Site:</b> Hen Pad	<b>MD Reference:</b> WELL @ 4807.5ft (P272 - RKB 28.5')
<b>Well:</b> HEN 07N	<b>North Reference:</b> True
<b>Wellbore:</b> HEN 07N	<b>Survey Calculation Method:</b> Minimum Curvature
<b>Design:</b> HEN 07N Final Surveys	<b>Database:</b> US_EDM

<b>Project</b> SEC.8-T4N-R64W, Weld County, Colorado			
<b>Map System:</b> US State Plane 1983	<b>System Datum:</b> Mean Sea Level		
<b>Geo Datum:</b> North American Datum 1983			
<b>Map Zone:</b> Colorado Northern Zone	Using geodetic scale factor		

<b>Site</b> Hen Pad			
<b>Site Position:</b>	<b>Northing:</b> 1,363,685.50 usft	<b>Latitude:</b> 40.328004	
<b>From:</b> Lat/Long	<b>Easting:</b> 3,258,631.47 usft	<b>Longitude:</b> -104.572344	
<b>Position Uncertainty:</b> 0.0 ft	<b>Slot Radius:</b> 13-3/16 "	<b>Grid Convergence:</b> 0.60 °	

<b>Well</b> HEN 07N			
<b>Well Position</b>	<b>+N/-S</b> 0.0 ft	<b>Northing:</b> 1,363,745.58 usft	<b>Latitude:</b> 40.328169
	<b>+E/-W</b> 0.0 ft	<b>Easting:</b> 3,258,630.75 usft	<b>Longitude:</b> -104.572345
<b>Position Uncertainty</b> 0.0 ft		<b>Wellhead Elevation:</b> ft	<b>Ground Level:</b> 4,779.0 ft

<b>Wellbore</b> HEN 07N					
Magnetics	Model Name	Sample Date	Declination (°)	Dip Angle (°)	Field Strength (nT)
	HRGM	08/21/2023	7.68	66.58	51,707.61475543

<b>Design</b> HEN 07N Final Surveys					
<b>Audit Notes:</b>					
<b>Version:</b> 1.0	<b>Phase:</b> ACTUAL	<b>Tie On Depth:</b> 0.0			
Vertical Section:	Depth From (TVD) (ft)	+N/-S (ft)	+E/-W (ft)	Direction (°)	
	0.0	0.0	0.0		85.06

<b>Survey Program</b> Date 11/28/2023					
From (ft)	To (ft)	Survey (Wellbore)	Tool Name	Description	
159.5	14,756.0	Survey #1 (HEN 07N)	MWD	MWD - Standard	

<b>Survey</b>									
Measured Depth (ft)	Inclination (°)	Azimuth (°)	Vertical Depth (ft)	+N/-S (ft)	+E/-W (ft)	Map Northing (usft)	Map Easting (usft)	Latitude	Longitude
0.0	0.00	0.00	0.0	0.0	0.0	1,363,745.58	3,258,630.75	40.328169	-104.572345
159.5	0.44	86.26	159.5	0.0	0.6	1,363,745.62	3,258,631.36	40.328169	-104.572342
249.5	0.79	100.50	249.5	-0.1	1.6	1,363,745.54	3,258,632.32	40.328169	-104.572339
340.5	1.23	126.17	340.5	-0.7	3.0	1,363,744.87	3,258,633.73	40.328167	-104.572334
456.5	0.88	133.02	456.5	-2.1	4.6	1,363,743.54	3,258,635.40	40.328163	-104.572328
545.5	0.88	127.92	545.4	-3.0	5.7	1,363,742.67	3,258,636.45	40.328161	-104.572324
629.5	0.62	318.34	629.4	-3.0	5.9	1,363,742.61	3,258,636.66	40.328161	-104.572323
715.5	2.90	322.89	715.4	-0.9	4.3	1,363,744.68	3,258,635.01	40.328166	-104.572329
801.5	4.31	317.94	801.2	3.2	0.8	1,363,748.78	3,258,631.49	40.328178	-104.572342
888.5	4.92	313.37	887.9	8.2	-4.1	1,363,753.71	3,258,626.54	40.328191	-104.572359
977.5	5.54	314.08	976.6	13.8	-10.0	1,363,759.26	3,258,620.62	40.328207	-104.572380
1,066.5	6.07	315.66	1,065.1	20.1	-16.4	1,363,765.55	3,258,614.18	40.328224	-104.572403

# Ensign

## Survey Report - Geographic

<b>Company:</b>	PDC Energy Inc. DJ Basin	<b>Local Co-ordinate Reference:</b>	Well HEN 07N
<b>Project:</b>	SEC.8-T4N-R64W	<b>TVD Reference:</b>	WELL @ 4807.5ft (P272 - RKB 28.5')
<b>Site:</b>	Hen Pad	<b>MD Reference:</b>	WELL @ 4807.5ft (P272 - RKB 28.5')
<b>Well:</b>	HEN 07N	<b>North Reference:</b>	True
<b>Wellbore:</b>	HEN 07N	<b>Survey Calculation Method:</b>	Minimum Curvature
<b>Design:</b>	HEN 07N Final Surveys	<b>Database:</b>	US_EDM

Survey										
Measured Depth (ft)	Inclination (°)	Azimuth (°)	Vertical Depth (ft)	+N/-S (ft)	+E/-W (ft)	Map Northing (usft)	Map Easting (usft)	Latitude	Longitude	
1,151.5	6.86	314.08	1,149.6	26.9	-23.2	1,363,772.22	3,258,607.32	40.328243	-104.572428	
1,237.5	8.53	312.32	1,234.8	34.8	-31.6	1,363,780.00	3,258,598.83	40.328264	-104.572458	
1,322.5	10.11	307.92	1,318.7	43.6	-42.1	1,363,788.72	3,258,588.20	40.328289	-104.572496	
1,407.5	12.13	308.28	1,402.1	53.7	-55.0	1,363,798.70	3,258,575.19	40.328316	-104.572542	
1,495.5	15.39	309.51	1,487.5	66.9	-71.3	1,363,811.69	3,258,558.79	40.328353	-104.572600	
1,582.5	15.30	308.80	1,571.4	81.4	-89.1	1,363,826.04	3,258,540.78	40.328392	-104.572664	
1,654.5	15.30	306.69	1,640.9	93.0	-104.1	1,363,837.51	3,258,525.64	40.328424	-104.572718	
1,728.0	15.20	305.97	1,711.8	104.5	-119.7	1,363,848.80	3,258,509.95	40.328456	-104.572774	
1,826.0	14.67	306.59	1,806.5	119.4	-140.1	1,363,863.53	3,258,489.44	40.328497	-104.572847	
1,924.0	14.61	315.94	1,901.3	135.7	-158.6	1,363,879.61	3,258,470.71	40.328542	-104.572914	
2,021.0	14.50	316.93	1,995.2	153.4	-175.4	1,363,897.10	3,258,453.72	40.328590	-104.572974	
2,118.0	14.36	317.66	2,089.1	171.1	-191.8	1,363,914.69	3,258,437.14	40.328639	-104.573033	
2,215.0	15.19	310.01	2,182.9	188.2	-209.7	1,363,931.56	3,258,419.13	40.328686	-104.573097	
2,313.0	14.07	313.52	2,277.8	204.7	-228.1	1,363,947.83	3,258,400.49	40.328731	-104.573163	
2,407.0	14.96	313.66	2,368.8	220.9	-245.2	1,363,963.89	3,258,383.26	40.328775	-104.573224	
2,504.0	14.86	312.70	2,462.5	238.0	-263.4	1,363,980.78	3,258,364.88	40.328822	-104.573289	
2,601.0	14.61	312.16	2,556.3	254.6	-281.6	1,363,997.23	3,258,346.50	40.328868	-104.573355	
2,698.0	14.78	312.54	2,650.1	271.2	-299.8	1,364,013.62	3,258,328.14	40.328913	-104.573420	
2,795.0	14.30	309.79	2,744.0	287.2	-318.1	1,364,029.45	3,258,309.65	40.328957	-104.573486	
2,892.0	14.70	307.20	2,837.9	302.3	-337.1	1,364,044.36	3,258,290.49	40.328999	-104.573554	
2,989.0	15.81	297.79	2,931.5	315.9	-358.6	1,364,057.74	3,258,268.85	40.329036	-104.573631	
3,086.0	16.30	293.07	3,024.8	327.4	-382.8	1,364,068.98	3,258,244.52	40.329068	-104.573718	
3,183.0	15.81	290.75	3,118.0	337.5	-407.7	1,364,078.73	3,258,219.54	40.329095	-104.573807	
3,281.0	15.68	289.27	3,212.3	346.6	-432.7	1,364,087.57	3,258,194.46	40.329120	-104.573897	
3,377.0	15.49	289.36	3,304.8	355.1	-457.1	1,364,095.85	3,258,170.03	40.329144	-104.573984	
3,475.0	15.83	292.28	3,399.1	364.5	-481.8	1,364,104.99	3,258,145.22	40.329170	-104.574072	
3,573.0	15.75	291.00	3,493.4	374.3	-506.6	1,364,114.57	3,258,120.33	40.329197	-104.574161	
3,670.0	15.89	291.77	3,586.8	384.0	-531.2	1,364,123.95	3,258,095.61	40.329223	-104.574250	
3,766.0	16.38	291.33	3,679.0	393.8	-556.0	1,364,133.49	3,258,070.70	40.329250	-104.574339	
3,863.0	16.65	292.46	3,772.0	404.1	-581.6	1,364,143.51	3,258,045.01	40.329278	-104.574430	
3,960.0	17.07	291.40	3,864.8	414.6	-607.7	1,364,153.74	3,258,018.81	40.329307	-104.574524	
4,056.0	16.73	292.18	3,956.7	424.9	-633.6	1,364,163.82	3,257,992.79	40.329335	-104.574617	
4,153.0	16.19	291.73	4,049.7	435.2	-659.1	1,364,173.83	3,257,967.19	40.329364	-104.574708	
4,250.0	16.44	290.59	4,142.8	445.0	-684.5	1,364,183.40	3,257,941.68	40.329391	-104.574800	
4,348.0	16.39	291.72	4,236.8	455.0	-710.3	1,364,193.12	3,257,915.75	40.329418	-104.574892	
4,445.0	16.60	292.79	4,329.8	465.4	-735.8	1,364,203.28	3,257,890.16	40.329447	-104.574984	
4,543.0	16.48	292.12	4,423.7	476.1	-761.6	1,364,213.67	3,257,864.27	40.329476	-104.575076	
4,640.0	16.02	293.22	4,516.9	486.6	-786.6	1,364,223.86	3,257,839.11	40.329505	-104.575166	
4,737.0	16.60	290.74	4,610.0	496.7	-811.9	1,364,233.78	3,257,813.75	40.329533	-104.575257	
4,836.0	16.43	291.14	4,704.9	506.8	-838.2	1,364,243.57	3,257,787.36	40.329560	-104.575351	
4,934.0	15.85	289.68	4,799.0	516.3	-863.7	1,364,252.80	3,257,761.74	40.329586	-104.575442	
5,031.0	16.24	290.50	4,892.2	525.5	-888.9	1,364,261.75	3,257,736.47	40.329611	-104.575533	
5,129.0	16.47	292.35	4,986.3	535.6	-914.6	1,364,271.56	3,257,710.68	40.329639	-104.575625	
5,226.0	16.12	293.44	5,079.4	546.2	-939.6	1,364,281.88	3,257,685.50	40.329668	-104.575715	
5,325.0	15.52	292.64	5,174.6	556.8	-964.5	1,364,292.19	3,257,660.56	40.329697	-104.575804	
5,423.0	15.34	291.22	5,269.1	566.5	-988.7	1,364,301.67	3,257,636.27	40.329724	-104.575891	
5,520.0	15.87	293.19	5,362.5	576.4	-1,012.8	1,364,311.29	3,257,612.02	40.329751	-104.575977	
5,616.0	14.24	295.53	5,455.2	586.6	-1,035.5	1,364,321.31	3,257,589.19	40.329779	-104.576059	
5,714.0	12.28	298.20	5,550.6	596.7	-1,055.6	1,364,331.22	3,257,569.03	40.329807	-104.576131	
5,811.0	9.06	297.87	5,645.9	605.2	-1,071.4	1,364,339.50	3,257,553.09	40.329830	-104.576187	
5,909.0	9.12	297.66	5,742.7	612.4	-1,085.1	1,364,346.56	3,257,539.32	40.329850	-104.576237	
6,006.0	7.69	290.15	5,838.6	618.2	-1,098.0	1,364,352.23	3,257,526.36	40.329866	-104.576283	
6,103.0	4.39	292.75	5,935.1	621.9	-1,107.6	1,364,355.81	3,257,516.80	40.329876	-104.576317	
6,199.0	0.08	45.50	6,031.0	623.3	-1,110.9	1,364,357.24	3,257,513.44	40.329880	-104.576329	
6,296.0	4.71	88.00	6,127.9	623.5	-1,106.9	1,364,357.47	3,257,517.47	40.329881	-104.576315	

# Ensign

## Survey Report - Geographic

<b>Company:</b>	PDC Energy Inc. DJ Basin	<b>Local Co-ordinate Reference:</b>	Well HEN 07N
<b>Project:</b>	SEC.8-T4N-R64W	<b>TVD Reference:</b>	WELL @ 4807.5ft (P272 - RKB 28.5')
<b>Site:</b>	Hen Pad	<b>MD Reference:</b>	WELL @ 4807.5ft (P272 - RKB 28.5')
<b>Well:</b>	HEN 07N	<b>North Reference:</b>	True
<b>Wellbore:</b>	HEN 07N	<b>Survey Calculation Method:</b>	Minimum Curvature
<b>Design:</b>	HEN 07N Final Surveys	<b>Database:</b>	US_EDM

Survey										
Measured Depth (ft)	Inclination (°)	Azimuth (°)	Vertical Depth (ft)	+N/-S (ft)	+E/-W (ft)	Map Northing (usft)	Map Easting (usft)	Latitude	Longitude	
6,393.0	12.45	73.45	6,223.7	626.7	-1,092.8	1,364,360.74	3,257,531.46	40.329889	-104.576264	
6,491.0	16.38	80.47	6,318.6	632.0	-1,069.1	1,364,366.28	3,257,555.17	40.329904	-104.576179	
6,589.0	23.29	89.53	6,410.8	634.4	-1,036.0	1,364,369.08	3,257,588.19	40.329910	-104.576060	
6,687.0	32.70	94.25	6,497.2	632.6	-990.1	1,364,367.75	3,257,634.08	40.329905	-104.575896	
6,785.0	43.73	91.01	6,574.1	630.0	-929.7	1,364,365.82	3,257,694.56	40.329898	-104.575679	
6,882.0	52.42	93.08	6,638.9	627.4	-857.6	1,364,363.91	3,257,766.63	40.329891	-104.575421	
6,979.0	61.78	95.36	6,691.5	621.3	-776.5	1,364,358.69	3,257,847.80	40.329874	-104.575130	
7,076.0	63.93	95.41	6,735.8	613.2	-690.6	1,364,351.49	3,257,933.81	40.329852	-104.574822	
7,173.0	71.98	92.49	6,772.2	607.1	-601.0	1,364,346.30	3,258,023.48	40.329835	-104.574500	
7,270.0	80.59	92.28	6,795.1	603.2	-506.9	1,364,343.37	3,258,117.57	40.329825	-104.574163	
7,368.0	82.72	92.44	6,809.4	599.2	-410.0	1,364,340.39	3,258,214.48	40.329814	-104.573815	
7,466.0	86.74	86.48	6,818.4	600.1	-312.5	1,364,342.35	3,258,311.97	40.329816	-104.573466	
<b>LPL - 1569' FNL &amp; 2352' FEL</b>										
7,563.0	88.48	86.24	6,822.4	606.3	-215.8	1,364,349.51	3,258,408.62	40.329833	-104.573119	
7,660.0	89.19	89.11	6,824.4	610.2	-118.9	1,364,354.46	3,258,505.46	40.329844	-104.572771	
7,758.0	90.14	88.74	6,824.9	612.0	-20.9	1,364,357.32	3,258,603.41	40.329849	-104.572420	
7,855.0	89.82	90.38	6,825.0	612.8	76.0	1,364,359.08	3,258,700.38	40.329851	-104.572072	
7,952.0	89.94	91.29	6,825.2	611.4	173.0	1,364,358.68	3,258,797.38	40.329847	-104.571724	
8,051.0	90.13	91.46	6,825.1	609.0	272.0	1,364,357.34	3,258,896.36	40.329841	-104.571369	
8,149.0	90.09	91.51	6,824.9	606.4	370.0	1,364,355.83	3,258,994.35	40.329834	-104.571018	
8,245.0	89.89	91.29	6,825.0	604.1	465.9	1,364,354.49	3,259,090.33	40.329827	-104.570673	
8,343.0	90.03	90.46	6,825.0	602.6	563.9	1,364,354.02	3,259,188.33	40.329823	-104.570322	
8,441.0	90.05	90.43	6,825.0	601.8	661.9	1,364,354.28	3,259,286.32	40.329821	-104.569970	
8,538.0	89.85	90.50	6,825.0	601.1	758.9	1,364,354.51	3,259,383.32	40.329819	-104.569623	
8,636.0	87.68	90.17	6,827.2	600.5	856.9	1,364,354.96	3,259,481.28	40.329817	-104.569271	
8,734.0	86.94	90.49	6,831.8	599.9	954.8	1,364,355.42	3,259,579.17	40.329816	-104.568920	
8,831.0	86.67	89.98	6,837.2	599.5	1,051.6	1,364,356.04	3,259,676.01	40.329815	-104.568573	
8,928.0	87.38	91.17	6,842.2	598.5	1,148.5	1,364,356.08	3,259,772.87	40.329812	-104.568225	
9,026.0	86.95	91.30	6,847.0	596.4	1,246.4	1,364,354.99	3,259,870.74	40.329806	-104.567874	
9,125.0	86.93	91.05	6,852.3	594.4	1,345.2	1,364,354.00	3,259,969.59	40.329801	-104.567520	
9,223.0	87.27	90.08	6,857.3	593.4	1,443.1	1,364,354.06	3,260,067.46	40.329798	-104.567169	
9,321.0	87.58	89.95	6,861.7	593.4	1,541.0	1,364,355.06	3,260,165.35	40.329798	-104.566818	
9,420.0	87.43	90.02	6,866.0	593.4	1,639.9	1,364,356.12	3,260,264.25	40.329798	-104.566463	
9,518.0	87.29	89.64	6,870.5	593.7	1,737.8	1,364,357.43	3,260,362.13	40.329799	-104.566112	
9,614.0	88.52	89.88	6,874.0	594.1	1,833.7	1,364,358.84	3,260,458.05	40.329800	-104.565768	
9,712.0	89.42	89.79	6,875.8	594.4	1,931.7	1,364,360.14	3,260,556.02	40.329800	-104.565416	
9,809.0	89.26	89.32	6,876.9	595.2	2,028.7	1,364,361.91	3,260,652.99	40.329802	-104.565068	
9,905.0	89.47	89.57	6,878.0	596.1	2,124.7	1,364,363.85	3,260,748.96	40.329805	-104.564724	
10,003.0	89.24	89.71	6,879.1	596.7	2,222.6	1,364,365.49	3,260,846.94	40.329807	-104.564373	
10,101.0	90.09	89.18	6,879.6	597.7	2,320.6	1,364,367.46	3,260,944.91	40.329809	-104.564021	
10,198.0	90.16	89.74	6,879.4	598.6	2,417.6	1,364,369.39	3,261,041.89	40.329812	-104.563673	
10,294.0	89.91	89.58	6,879.4	599.1	2,513.6	1,364,370.96	3,261,137.87	40.329813	-104.563329	
10,392.0	89.79	89.25	6,879.6	600.2	2,611.6	1,364,372.99	3,261,235.85	40.329816	-104.562978	
10,489.0	89.75	89.40	6,880.0	601.3	2,708.6	1,364,375.15	3,261,332.82	40.329819	-104.562630	
10,587.0	89.89	89.74	6,880.3	602.0	2,806.6	1,364,376.91	3,261,430.80	40.329821	-104.562278	
10,685.0	91.37	89.94	6,879.2	602.3	2,904.6	1,364,378.20	3,261,528.77	40.329822	-104.561927	
10,782.0	93.24	89.24	6,875.3	603.0	3,001.5	1,364,379.91	3,261,625.67	40.329824	-104.561579	
10,881.0	92.97	89.87	6,870.0	603.8	3,100.4	1,364,381.71	3,261,724.51	40.329826	-104.561225	
10,976.0	92.58	90.03	6,865.4	603.8	3,195.3	1,364,382.79	3,261,819.38	40.329826	-104.560884	
11,075.0	93.13	89.44	6,860.4	604.3	3,294.1	1,364,384.28	3,261,918.24	40.329827	-104.560530	
11,171.0	92.30	90.04	6,855.9	604.7	3,390.0	1,364,385.72	3,262,014.12	40.329828	-104.560186	
11,266.0	92.55	89.69	6,851.9	605.0	3,484.9	1,364,386.93	3,262,109.02	40.329829	-104.559845	
11,364.0	93.11	89.72	6,847.0	605.5	3,582.8	1,364,388.46	3,262,206.89	40.329830	-104.559494	
11,462.0	92.89	89.93	6,841.9	605.8	3,680.7	1,364,389.79	3,262,304.74	40.329831	-104.559143	
11,559.0	93.34	90.29	6,836.6	605.6	3,777.5	1,364,390.61	3,262,401.59	40.329831	-104.558796	

# Ensign

## Survey Report - Geographic

<b>Company:</b> PDC Energy Inc. DJ Basin	<b>Local Co-ordinate Reference:</b> Well HEN 07N
<b>Project:</b> SEC.8-T4N-R64W	<b>TVD Reference:</b> WELL @ 4807.5ft (P272 - RKB 28.5')
<b>Site:</b> Hen Pad	<b>MD Reference:</b> WELL @ 4807.5ft (P272 - RKB 28.5')
<b>Well:</b> HEN 07N	<b>North Reference:</b> True
<b>Wellbore:</b> HEN 07N	<b>Survey Calculation Method:</b> Minimum Curvature
<b>Design:</b> HEN 07N Final Surveys	<b>Database:</b> US_EDM

Survey									
Measured Depth (ft)	Inclination (°)	Azimuth (°)	Vertical Depth (ft)	+N/-S (ft)	+E/-W (ft)	Map Northing (usft)	Map Easting (usft)	Latitude	Longitude
11,656.0	93.18	89.94	6,831.1	605.4	3,874.4	1,364,391.43	3,262,498.42	40.329830	-104.558448
11,755.0	93.17	89.84	6,825.6	605.6	3,973.2	1,364,392.65	3,262,597.26	40.329830	-104.558094
11,851.0	93.18	89.87	6,820.3	605.8	4,069.1	1,364,393.90	3,262,693.10	40.329831	-104.557750
11,947.0	93.26	90.00	6,814.9	605.9	4,164.9	1,364,395.01	3,262,788.94	40.329831	-104.557406
12,044.0	93.41	89.94	6,809.3	606.0	4,261.8	1,364,396.08	3,262,885.76	40.329831	-104.557059
12,143.0	92.80	90.07	6,803.9	606.0	4,360.6	1,364,397.10	3,262,984.61	40.329831	-104.556704
12,238.0	93.29	90.25	6,798.9	605.7	4,455.5	1,364,397.83	3,263,079.46	40.329831	-104.556364
12,334.0	92.59	90.01	6,794.0	605.5	4,551.4	1,364,398.61	3,263,175.33	40.329830	-104.556020
12,431.0	90.19	90.60	6,791.6	605.0	4,648.3	1,364,399.11	3,263,272.29	40.329828	-104.555673
12,527.0	90.13	89.39	6,791.3	605.0	4,744.3	1,364,400.12	3,263,368.28	40.329828	-104.555328
12,625.0	89.72	89.93	6,791.5	605.6	4,842.3	1,364,401.73	3,263,466.26	40.329830	-104.554977
12,724.0	90.15	90.15	6,791.6	605.5	4,941.3	1,364,402.70	3,263,565.25	40.329830	-104.554622
12,821.0	90.63	89.88	6,790.9	605.5	5,038.3	1,364,403.69	3,263,662.24	40.329830	-104.554274
12,918.0	90.38	90.09	6,790.1	605.5	5,135.3	1,364,404.73	3,263,759.22	40.329830	-104.553926
13,016.0	90.49	89.67	6,789.3	605.7	5,233.3	1,364,405.96	3,263,857.21	40.329830	-104.553574
13,114.0	90.01	90.68	6,788.9	605.4	5,331.3	1,364,406.68	3,263,955.20	40.329829	-104.553223
13,212.0	90.06	90.53	6,788.8	604.4	5,429.3	1,364,406.67	3,264,053.19	40.329826	-104.552872
13,310.0	90.21	90.42	6,788.6	603.5	5,527.3	1,364,406.89	3,264,151.19	40.329824	-104.552520
13,409.0	90.46	89.85	6,788.0	603.3	5,626.3	1,364,407.69	3,264,250.18	40.329823	-104.552165
13,504.0	90.32	90.17	6,787.4	603.3	5,721.3	1,364,408.67	3,264,345.17	40.329823	-104.551824
13,601.0	90.19	90.06	6,786.9	603.1	5,818.3	1,364,409.49	3,264,442.16	40.329823	-104.551476
13,699.0	90.66	89.91	6,786.2	603.1	5,916.3	1,364,410.54	3,264,540.15	40.329823	-104.551125
13,796.0	90.45	89.84	6,785.3	603.3	6,013.3	1,364,411.76	3,264,637.13	40.329823	-104.550777
13,893.0	90.73	89.82	6,784.3	603.6	6,110.3	1,364,413.06	3,264,734.11	40.329824	-104.550429
13,989.0	90.45	90.12	6,783.3	603.7	6,206.3	1,364,414.12	3,264,830.10	40.329824	-104.550085
14,086.0	89.96	89.73	6,782.9	603.8	6,303.3	1,364,415.26	3,264,927.08	40.329824	-104.549737
14,182.0	89.48	90.11	6,783.4	603.9	6,399.3	1,364,416.40	3,265,023.07	40.329825	-104.549393
14,280.0	89.48	90.25	6,784.3	603.6	6,497.3	1,364,417.12	3,265,121.06	40.329824	-104.549041
14,376.0	89.58	89.82	6,785.1	603.6	6,593.3	1,364,418.06	3,265,217.05	40.329823	-104.548697
14,474.0	89.26	90.09	6,786.1	603.7	6,691.3	1,364,419.16	3,265,315.03	40.329824	-104.548345
14,571.0	89.53	89.97	6,787.1	603.6	6,788.3	1,364,420.13	3,265,412.02	40.329823	-104.547997
14,667.0	89.62	90.40	6,787.8	603.3	6,884.2	1,364,420.82	3,265,508.01	40.329822	-104.547653
14,721.0	89.27	89.99	6,788.3	603.1	6,938.2	1,364,421.20	3,265,562.00	40.329822	-104.547459
14,756.0	89.27	89.99	6,788.8	603.1	6,973.2	1,364,421.58	3,265,597.00	40.329822	-104.547334
<b>BHL - 1555' FNL &amp; 356' FEL</b>									

Design Annotations					
Measured Depth (ft)	Vertical Depth (ft)	Local Coordinates		Comment	
		+N/-S (ft)	+E/-W (ft)		
7,466.0	6,818.4	600.1	-312.5	LPL - 1569' FNL & 2352' FEL	
14,756.0	6,788.8	603.1	6,973.2	BHL - 1555' FNL & 356' FEL	

Checked By: \_\_\_\_\_ Approved By: \_\_\_\_\_ Date: \_\_\_\_\_