

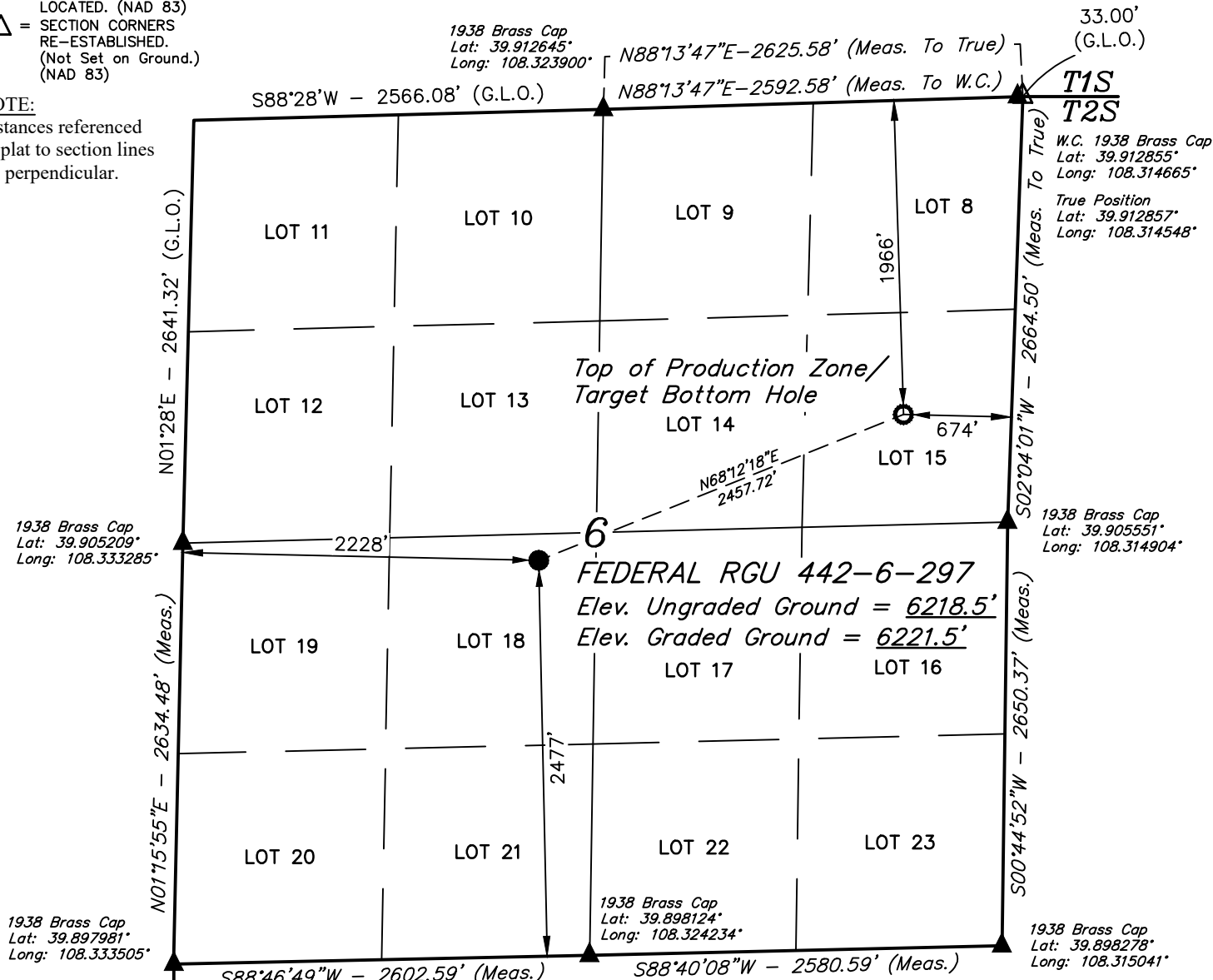
**LEGEND:**

- = PROPOSED WELLHEAD.
- = TOP OF PRODUCTION ZONE/  
TARGET BOTTOM HOLE.
- ▲ = SECTION CORNERS  
LOCATED. (NAD 83)
- △ = SECTION CORNERS  
RE-ESTABLISHED.  
(Not Set on Ground.)  
(NAD 83)

**T2S, R97W, 6th P.M.**

**NOTE:**

Distances referenced on plat to section lines are perpendicular.



1938 Brass Cap  
Lat: 39.905209°  
Long: 108.333285°

1938 Brass Cap  
Lat: 39.897981°  
Long: 108.333505°

1938 Brass Cap  
Lat: 39.912645°  
Long: 108.323900°

33.00'  
(G.L.O.)

**T1S  
T2S**  
W.C. 1938 Brass Cap  
Lat: 39.912855°  
Long: 108.314665°  
True Position  
Lat: 39.912857°  
Long: 108.314548°

1938 Brass Cap  
Lat: 39.905551°  
Long: 108.314904°

**6**  
**FEDERAL RGU 442-6-297**  
Elev. Ungraded Ground = 6218.5'  
Elev. Graded Ground = 6221.5'

1938 Brass Cap  
Lat: 39.898124°  
Long: 108.324234°

1938 Brass Cap  
Lat: 39.898278°  
Long: 108.315041°

R R  
98 97  
W W

**BASIS OF BEARINGS**

NOTE:  
SEE LOCATION DRAWING PLAT FOR VISIBLE  
IMPROVEMENTS WITHIN 2,000' OF THIS LOCATION.



NAD 83 (SURFACE LOCATION)	NAD 83 (TPZ / TBH)
LATITUDE = 39°54'17.66" (39.904905°)	LATITUDE = 39°54'26.64" (39.907400°)
LONGITUDE = 108°19'31.27" (108.325354°)	LONGITUDE = 108°19'01.98" (108.317218°)
STATE PLANE NAD 83 (CO. NORTH)	STATE PLANE NAD 83 (CO. NORTH)
N: 1220832.70' E: 2207497.29'	N: 1221668.62' E: 2209807.58'
STATE PLANE NAD 83 (CO. CENTRAL)	STATE PLANE NAD 83 (CO. CENTRAL)
N: 1766821.79' E: 2207443.90'	N: 1767659.52' E: 2209753.70'

**CERTIFICATE**

THIS IS TO CERTIFY THAT THE ABOVE PLAT WAS PREPARED AND THE LOCATION AS SHOWN WAS STAKED ON THE GROUND FROM FIELD NOTES OF ACTUAL SURVEYS MADE BY ME OR UNDER MY SUPERVISION AND THAT THE SAME ARE TRUE AND CORRECT TO THE BEST OF MY KNOWLEDGE AND BELIEF.



REGISTERED LAND SURVEYOR  
REGISTRATION NO. 88130  
STATE OF COLORADO  
03-18-22

REV: 3 03-18-22 M.D. (ADD TPZ)

**BASIS OF BEARINGS**

BEARINGS ARE A BASED ASSUMPTION THAT THE SOUTH LINE OF THE SOUTHWEST 1/4 OF SECTION 6 BEARS S88°46'49"W. MONUMENTS DESCRIBED HEREON.

**BASIS OF ELEVATION**

BENCH MARK (M25) LOCATED IN THE NE 1/4 OF SECTION 25, T2S, R99W, 6th P.M., TAKEN FROM THE YANKEE GULCH QUADRANGLE, COLORADO, RIO BLANCO COUNTY, 7.5 MINUTE QUAD. (TOPOGRAPHIC MAP) PUBLISHED BY THE UNITED STATES DEPARTMENT OF THE INTERIOR, GEOLOGICAL SURVEY. SAID ELEVATION IS MARKED AS BEING 6971 FEET.

**UELS, LLC**

Corporate Office \* 85 South 200 East  
Vernal, UT 84078 \* (435) 789-1017



**TEP Rocky Mountain LLC**

**FEDERAL RGU 442-6-297**  
**LOT 18, SECTION 6, T2S, R97W, 6th P.M.**  
**RIO BLANCO COUNTY, COLORADO**

SURVEYED BY	BART HUNTING	07-22-21	SCALE
DRAWN BY	M.D.	09-26-21	1" = 1000'

**WELL LOCATION PLAT**