

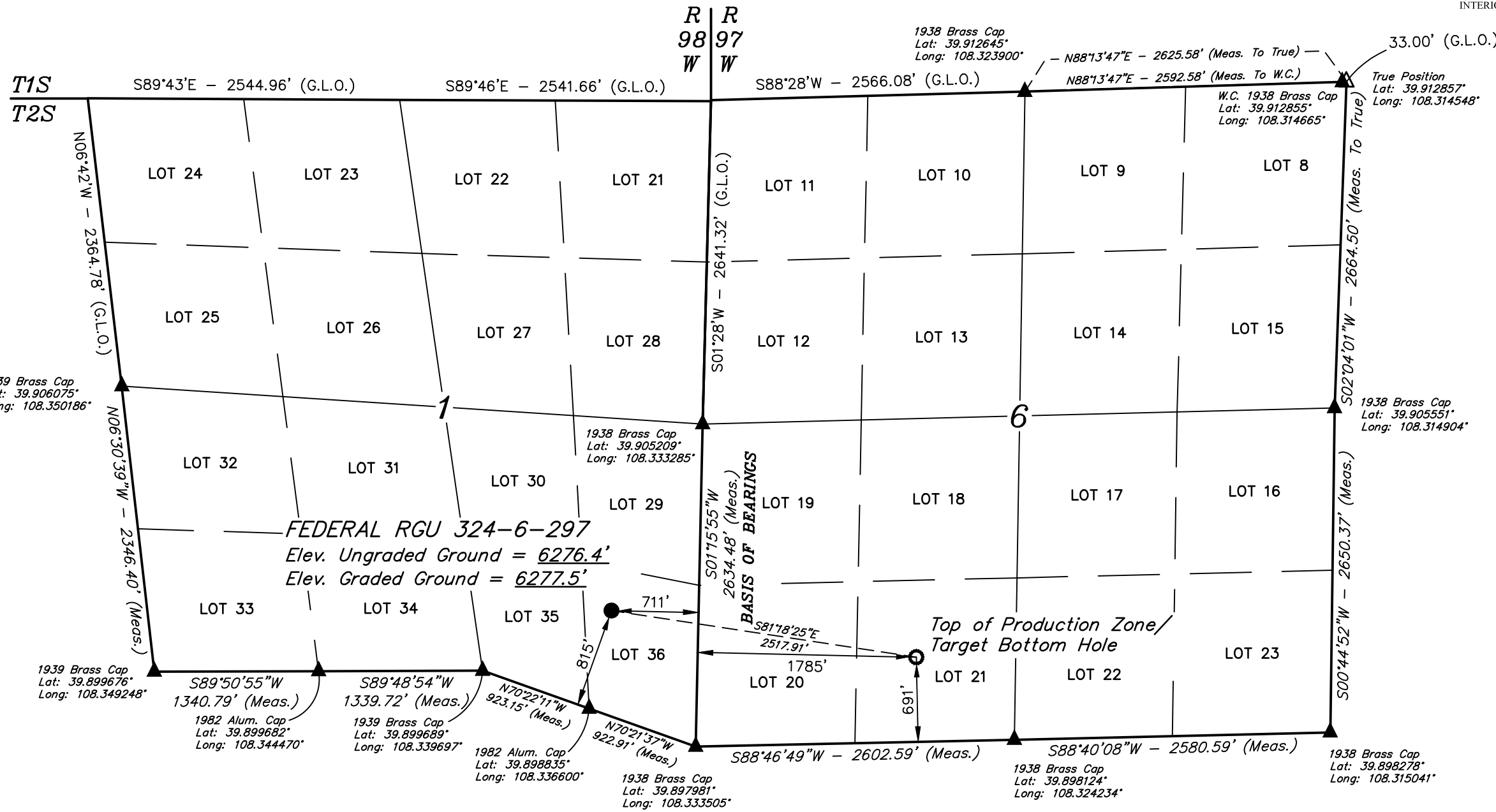
T2S, R98W, 6th P.M.

TEP Rocky Mountain LLC

FEDERAL RGU 324-6-297
 LOT 36, SECTION 1, T2S, R98W, 6th P.M.
 RIO BLANCO COUNTY, COLORADO

BASIS OF BEARINGS
 BEARINGS ARE A BASED ASSUMPTION THAT THE EAST LINE OF THE SOUTHEAST 1/4 OF SECTION 1 BEARS S01°15'55"W. MONUMENTS DESCRIBED HEREON.

BASIS OF ELEVATION
 BENCH MARK (M25) LOCATED IN THE NE 1/4 OF SECTION 25, T2S, R99W, 6th P.M., TAKEN FROM THE YANKEE GULCH QUADRANGLE, COLORADO, RIO BLANCO COUNTY, 7.5 MINUTE QUAD. (TOPOGRAPHIC MAP) PUBLISHED BY THE UNITED STATES DEPARTMENT OF THE INTERIOR, GEOLOGICAL SURVEY. SAID ELEVATION IS MARKED AS BEING 6971 FEET.



- LEGEND:**
- = PROPOSED WELLHEAD.
 - = TOP OF PRODUCTION ZONE/TARGET BOTTOM HOLE.
 - ▲ = SECTION CORNERS LOCATED. (NAD 83)
 - △ = SECTION CORNERS RE-ESTABLISHED. (Not Set on Ground.) (NAD 83)

PDOP = 1.6

NAD 83 (SURFACE LOCATION)	
LATITUDE	= 39°54'03.71" (39.901031°)
LONGITUDE	= 108°20'09.41" (108.335948°)
STATE PLANE NAD 83 (CO. NORTH)	
N:	1219517.04' E: 2204481.64'
STATE PLANE NAD 83 (CO. CEN.)	
N:	1765503.75' E: 2204429.08'

NAD 83 (TPZ/TBH)	
LATITUDE	= 39°53'59.92" (39.899978°)
LONGITUDE	= 108°19'37.49" (108.327081°)
STATE PLANE NAD 83 (CO. NORTH)	
N:	1219054.17' E: 2206955.74'
STATE PLANE NAD 83 (CO. CEN.)	
N:	1765042.74' E: 2206903.68'

FEDERAL RGU 324-6-297
 Elev. Ungraded Ground = 6276.4'
 Elev. Graded Ground = 6277.5'

Top of Production Zone/
 Target Bottom Hole

CERTIFICATE

THIS IS TO CERTIFY THAT THE ABOVE PLAT WAS PREPARED AND THE LOCATION AS SHOWN WAS STAKED ON THE GROUND FROM FIELD NOTES OF ACTUAL SURVEYS MADE BY ME OR UNDER MY SUPERVISION AND THAT THE SAME ARE TRUE AND CORRECT TO THE BEST OF MY KNOWLEDGE AND BELIEF.

Handwritten Signature
 REGISTERED LAND SURVEYOR
 REGISTRATION NO. 19189
 STATE OF COLORADO 06-01-22

REV: 2 01-31-22 T.L.L. (LABEL UPDATES)

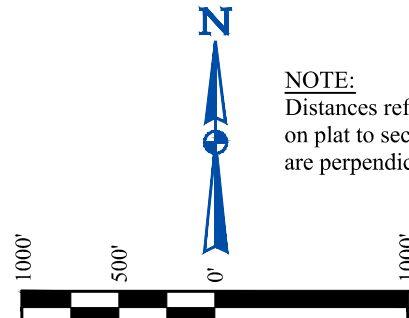
UINTEAH
 ENGINEERING & LAND SURVEYING

UELS, LLC
 Corporate Office * 85 South 200 East
 Vernal, UT 84078 * (435) 789-1017

SURVEYED BY	BART HUNTING	08-18-21	SCALE
DRAWN BY	M.D.	10-05-21	1" = 1000'

WELL LOCATION PLAT

NOTE:
 Distances referenced on plat to section lines are perpendicular.



NOTE:
 SEE LOCATION DRAWING PLAT FOR VISIBLE IMPROVEMENTS WITHIN 2,000' OF THIS LOCATION.