

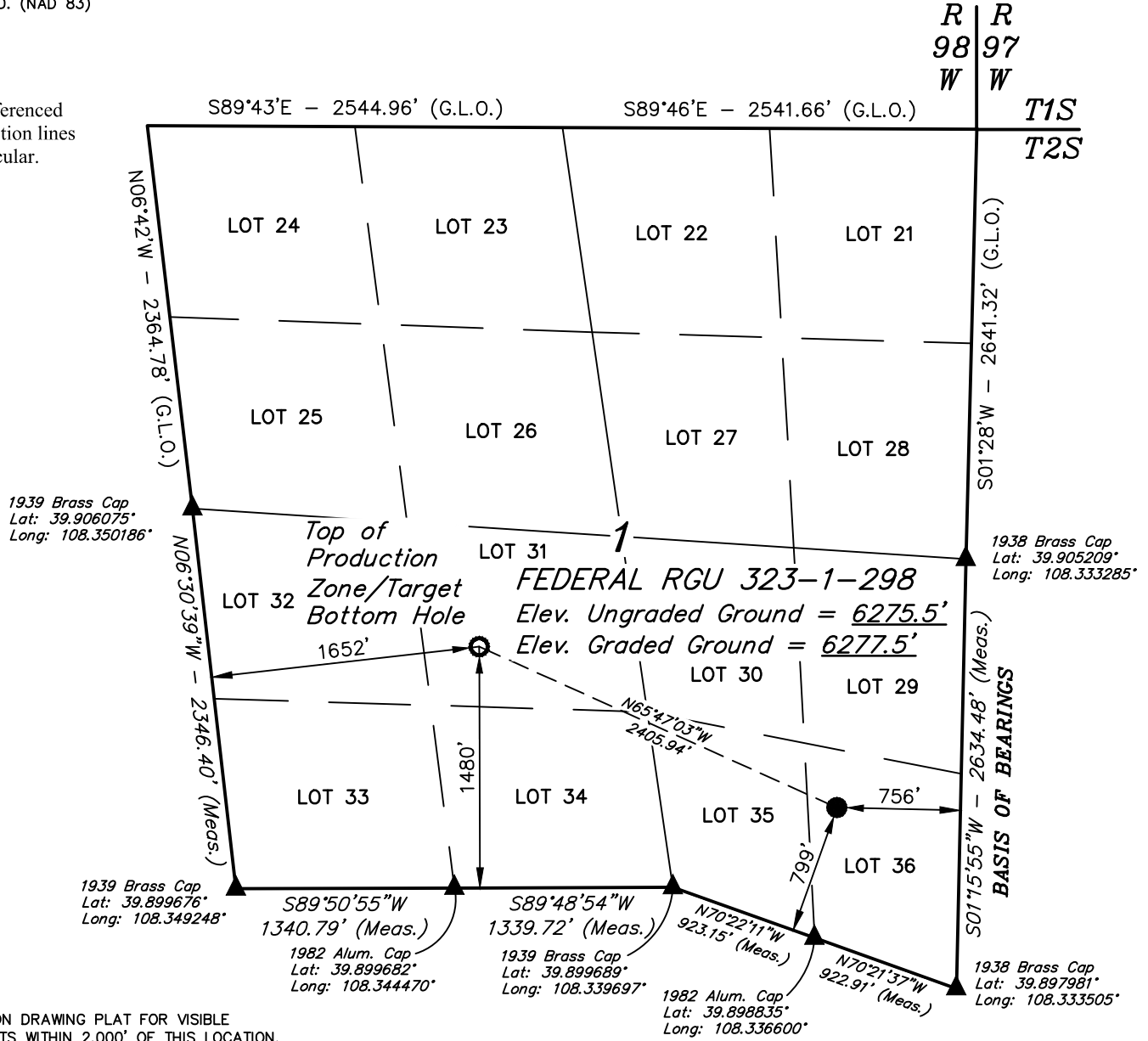
# T2S, R98W, 6th P.M.

## LEGEND:

- = PROPOSED WELLHEAD.
- = TOP OF PRODUCTION ZONE/  
TARGET BOTTOM HOLE.
- ▲ = SECTION CORNERS  
LOCATED. (NAD 83)

## NOTE:

Distances referenced on plat to section lines are perpendicular.



NOTE:  
SEE LOCATION DRAWING PLAT FOR VISIBLE IMPROVEMENTS WITHIN 2,000' OF THIS LOCATION.



NAD 83 (SURFACE LOCATION)	NAD 83 (TPZ/TBH)
LATITUDE = 39°54'03.70" (39.901029°)	LATITUDE = 39°54'13.48" (39.903744°)
LONGITUDE = 108°20'09.99" (108.336108°)	LONGITUDE = 108°20'38.12" (108.343922°)
STATE PLANE NAD 83 (CO. NORTH)	STATE PLANE NAD 83 (CO. NORTH)
N: 1219517.80' E: 2204436.66'	N: 1220576.63' E: 2202277.17'
STATE PLANE NAD 83 (CO. CEN.)	STATE PLANE NAD 83 (CO. CEN.)
N: 1765504.47' E: 2204384.10'	N: 1766561.71' E: 2202223.67'

CERTIFICATE OF SURVEY

THIS IS TO CERTIFY THAT THE ABOVE PLAT WAS PREPARED AND THE LOCATION AS SHOWN WAS STAKED ON THE GROUND FROM FIELD NOTES OF ACTUAL SURVEYS MADE BY ME OR UNDER MY SUPERVISION AND THAT THE SAME ARE TRUE AND CORRECT TO THE BEST OF MY KNOWLEDGE AND BELIEF.

*Harold Marshall*  
 REGISTERED LAND SURVEYOR  
 REGISTRATION NO. 38130  
 STATE OF COLORADO 02-01-22

**BASIS OF BEARINGS**  
 BEARINGS ARE A BASED ASSUMPTION THAT THE EAST LINE OF THE SOUTHEAST 1/4 OF SECTION 1 BEARS S01°15'55"W. MONUMENTS DESCRIBED HEREON.

**BASIS OF ELEVATION**  
 BENCH MARK (M25) LOCATED IN THE NE 1/4 OF SECTION 25, T2S, R99W, 6th P.M., TAKEN FROM THE YANKEE GULCH QUADRANGLE, COLORADO, RIO BLANCO COUNTY, 7.5 MINUTE QUAD. (TOPOGRAPHIC MAP) PUBLISHED BY THE UNITED STATES DEPARTMENT OF THE INTERIOR, GEOLOGICAL SURVEY. SAID ELEVATION IS MARKED AS BEING 6971 FEET.

**UELS, LLC**  
 Corporate Office \* 85 South 200 East  
 Vernal, UT 84078 \* (435) 789-1017

**TEP Rocky Mountain LLC**

**FEDERAL RGU 323-1-298**  
**LOT 36, SECTION 1, T2S, R98W, 6th P.M.**  
**RIO BLANCO COUNTY, COLORADO**

SURVEYED BY	BART HUNTING	08-18-21	SCALE
DRAWN BY	M.D.	10-05-21	1" = 1000'

**WELL LOCATION PLAT**

REV: 2 01-31-22 T.L.L. (LABEL UPDATES)