

**TEP Rocky Mountain LLC**

**FEDERAL RGU 521-7-297  
LOT 36, SECTION 1, T2S, R98W, 6th P.M.  
RIO BLANCO COUNTY, COLORADO**

**BASIS OF BEARINGS**  
BEARINGS ARE A BASED ASSUMPTION THAT THE EAST LINE OF THE SOUTHEAST 1/4 OF SECTION 1 BEARS S89°15'55"W. MONUMENTS DESCRIBED HEREON.

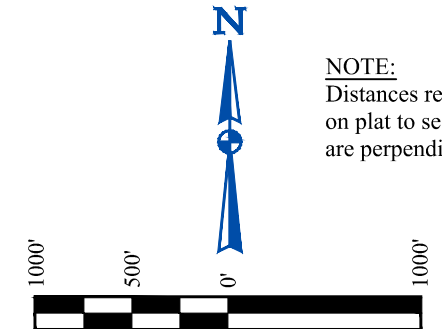
**BASIS OF ELEVATION**  
BENCH MARK (M25) LOCATED IN THE NE 1/4 OF SECTION 25, T2S, R99W, 6th P.M., TAKEN FROM THE YANKEE GULCH QUADRANGLE, COLORADO, RIO BLANCO COUNTY, 7.5 MINUTE QUAD. (TOPOGRAPHIC MAP) PUBLISHED BY THE UNITED STATES DEPARTMENT OF THE INTERIOR, GEOLOGICAL SURVEY. SAID ELEVATION IS MARKED AS BEING 6971 FEET.

**T2S, R98W, 6th P.M.**

**LEGEND:**

- = PROPOSED WELLHEAD.
- = TOP OF PRODUCTION ZONE/  
TARGET BOTTOM HOLE.
- ▲ = SECTION CORNERS  
LOCATED. (NAD 83)
- △ = SECTION CORNERS  
RE-ESTABLISHED.  
(Not Set on Ground.)

**NOTE:**  
Distances referenced on plat to section lines are perpendicular.



PDOP = 1.5

NAD 83 (SURFACE LOCATION)	
LATITUDE = 39°54'03.61" (39.901003°)	LONGITUDE = 108°20'09.60" (108.336001°)
STATE PLANE NAD 83 (CO. NORTH)	
N: 1219507.30' E: 2204466.48'	
STATE PLANE NAD 83 (CO. CEN.)	
N: 1765494.00' E: 2204413.93'	
NAD 83 (TPZ/TBH)	
LATITUDE = 39°53'42.32" (39.895088°)	LONGITUDE = 108°19'36.78" (108.326884°)
STATE PLANE NAD 83 (CO. NORTH)	
N: 1217272.21' E: 2206954.38'	
STATE PLANE NAD 83 (CO. CEN.)	
N: 1763260.68' E: 2206903.68'	

**CERTIFICATE**

THIS IS TO CERTIFY THAT THE ABOVE PLAT WAS PREPARED AND THE LOCATION AS SHOWN WAS STAKED ON THE GROUND FROM FIELD NOTES OF ACTUAL SURVEYS MADE BY ME OR UNDER MY SUPERVISION AND THAT THE SAME ARE TRUE AND CORRECT TO THE BEST OF MY KNOWLEDGE AND BELIEF.

*Handwritten Signature*  
REGISTERED LAND SURVEYOR  
REGISTRATION NO. 199180  
STATE OF COLORADO 08-01-22

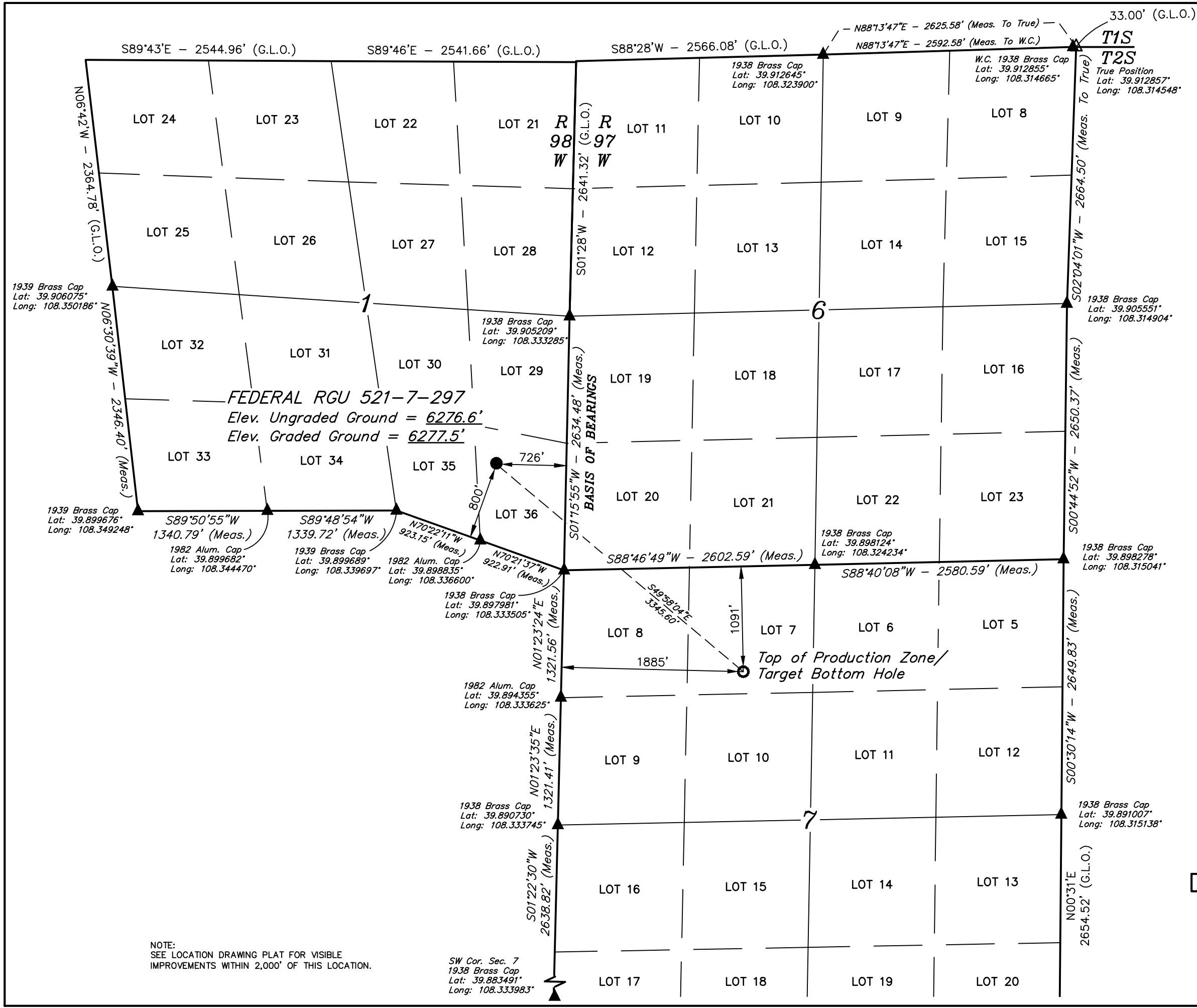
REV: 2 01-31-22 T.L.L. (LABEL UPDATES & WELL NAME CHANGE)

**UINTEAH**  
ENGINEERING & LAND SURVEYING

**UELS, LLC**  
Corporate Office \* 85 South 200 East  
Vernal, UT 84078 \* (435) 789-1017

SURVEYED BY	BART HUNTING	08-18-21	SCALE
DRAWN BY	M.D.	10-05-21	1" = 1000'

**WELL LOCATION PLAT**



**NOTE:**  
SEE LOCATION DRAWING PLAT FOR VISIBLE IMPROVEMENTS WITHIN 2,000' OF THIS LOCATION.