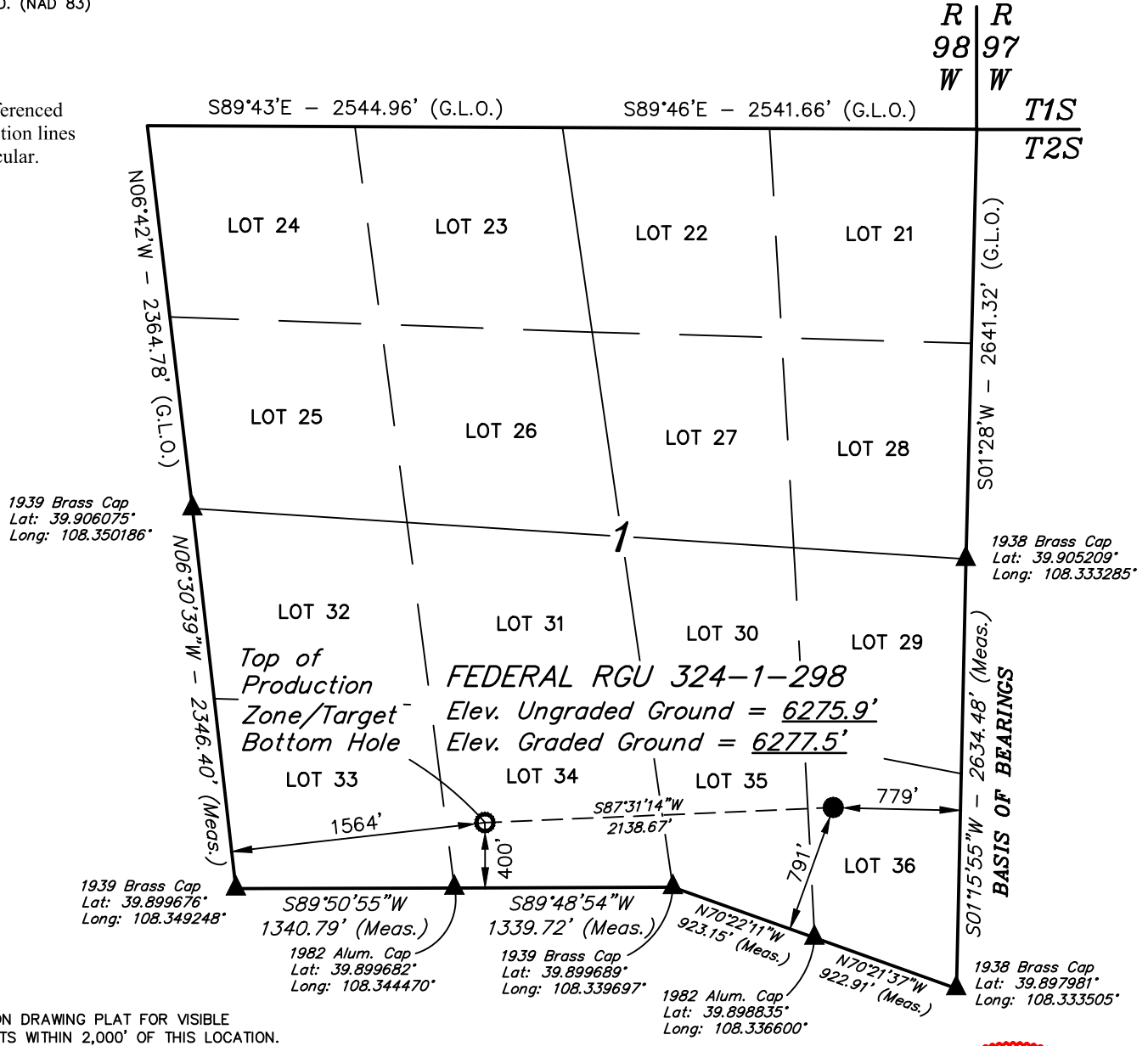


T2S, R98W, 6th P.M.

LEGEND:

- = PROPOSED WELLHEAD.
- = TOP OF PRODUCTION ZONE/
TARGET BOTTOM HOLE.
- ▲ = SECTION CORNERS
LOCATED. (NAD 83)

NOTE:
Distances referenced
on plat to section lines
are perpendicular.



NOTE:
SEE LOCATION DRAWING PLAT FOR VISIBLE
IMPROVEMENTS WITHIN 2,000' OF THIS LOCATION.

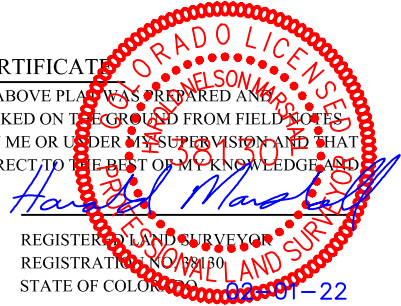
PDOP = 1.3



NAD 83 (SURFACE LOCATION)	NAD 83 (TPZ/TBH)
LATITUDE = 39°54'03.70" (39.901028°)	LATITUDE = 39°54'02.81" (39.900781°)
LONGITUDE = 108°20'10.28" (108.336188°)	LONGITUDE = 108°20'37.69" (108.343802°)
STATE PLANE NAD 83 (CO. NORTH)	STATE PLANE NAD 83 (CO. NORTH)
N: 1219518.17' E: 2204414.17'	N: 1219496.69' E: 2202276.35'
STATE PLANE NAD 83 (CO. CEN.)	STATE PLANE NAD 83 (CO. CEN.)
N: 1765504.83' E: 2204361.61'	N: 1765481.71' E: 2202223.68'

CERTIFICATE

THIS IS TO CERTIFY THAT THE ABOVE PLAT WAS PREPARED AND THE LOCATION AS SHOWN WAS STAKED ON THE GROUND FROM FIELD NOTES OF ACTUAL SURVEYS MADE BY ME OR UNDER MY SUPERVISION AND THAT THE SAME ARE TRUE AND CORRECT TO THE BEST OF MY KNOWLEDGE AND BELIEF.



REGISTERED LAND SURVEYOR
REGISTRATION NO. 381307
STATE OF COLORADO 02-01-22

REV: 2 01-31-22 T.L.L. (LABEL UPDATES)

BASIS OF BEARINGS

BEARINGS ARE A BASED ASSUMPTION THAT THE EAST LINE OF THE SOUTHEAST 1/4 OF SECTION 1 BEARS S01°15'55"W. MONUMENTS DESCRIBED HEREON.

BASIS OF ELEVATION

BENCH MARK (M25) LOCATED IN THE NE 1/4 OF SECTION 25, T2S, R99W, 6th P.M., TAKEN FROM THE YANKEE GULCH QUADRANGLE, COLORADO, RIO BLANCO COUNTY, 7.5 MINUTE QUAD. (TOPOGRAPHIC MAP) PUBLISHED BY THE UNITED STATES DEPARTMENT OF THE INTERIOR, GEOLOGICAL SURVEY. SAID ELEVATION IS MARKED AS BEING 6971 FEET.

UELS, LLC

Corporate Office * 85 South 200 East
Vernal, UT 84078 * (435) 789-1017



TEP Rocky Mountain LLC

FEDERAL RGU 324-1-298
LOT 36, SECTION 1, T2S, R98W, 6th P.M.
RIO BLANCO COUNTY, COLORADO

SURVEYED BY	BART HUNTING	08-18-21	SCALE
DRAWN BY	M.D.	10-05-21	1" = 1000'

WELL LOCATION PLAT