

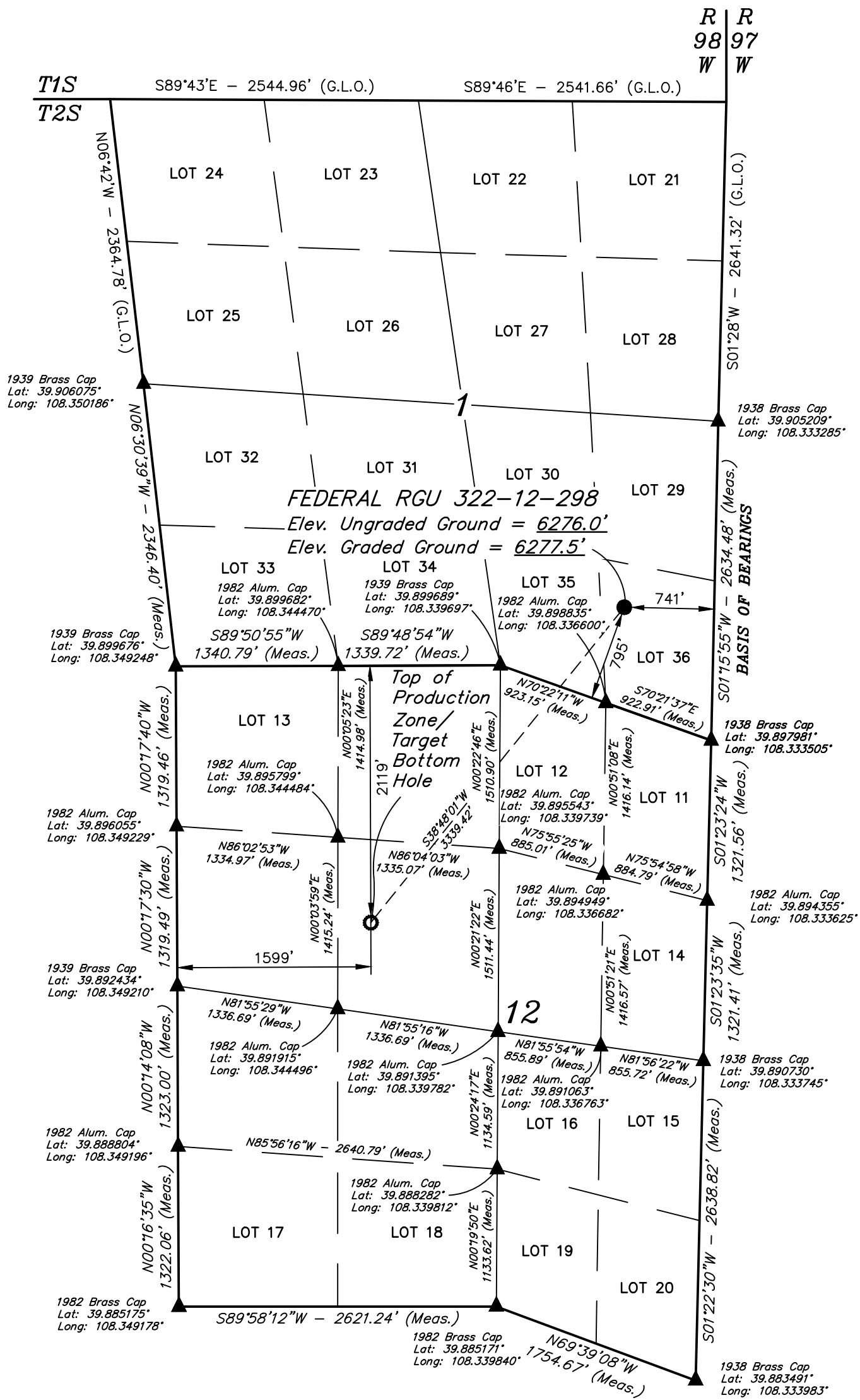
T2S, R98W, 6th P.M.

LEGEND:

- = PROPOSED WELLHEAD.
- = TOP OF PRODUCTION ZONE/
TARGET BOTTOM HOLE.
- ▲ = SECTION CORNERS
LOCATED. (NAD 83)

NOTE:

Distances referenced on plat to section lines are perpendicular.



NOTE:
SEE LOCATION DRAWING PLAT FOR VISIBLE IMPROVEMENTS WITHIN 2,000' OF THIS LOCATION.

1938 Brass Cap
Lat: 39.883491°
Long: 108.333983°



PDOP = 1.5

NAD 83 (SURFACE LOCATION)	NAD 83 (TPZ/TBH)
LATITUDE = 39°54'03.61" (39.901002°)	LATITUDE = 39°53'37.92" (39.893867°)
LONGITUDE = 108°20'09.80" (108.336054°)	LONGITUDE = 108°20'36.67" (108.343521°)
STATE PLANE NAD 83 (CO. NORTH)	STATE PLANE NAD 83 (CO. NORTH)
N: 1219507.55' E: 2204451.48'	N: 1216976.85' E: 2202274.42'
STATE PLANE NAD 83 (CO. CEN.)	STATE PLANE NAD 83 (CO. CEN.)
N: 1765494.24' E: 2204398.93'	N: 1762961.73' E: 2202223.69'

CERTIFICATE
THIS IS TO CERTIFY THAT THE ABOVE PLAT WAS PREPARED AND THE LOCATION AS SHOWN WAS STAKED ON THE GROUND FROM FIELD NOTES OF ACTUAL SURVEYS MADE BY ME OR UNDER MY SUPERVISION AND THAT THE SAME ARE TRUE AND CORRECT TO THE BEST OF MY KNOWLEDGE AND BELIEF.

Handwritten Signature
REGISTERED LAND SURVEYOR
REGISTRATION NO. 199180
STATE OF COLORADO
08-01-22

REV: 2 01-31-22 T.L.L. (WELL NAME & LABEL UPDATES)

BASIS OF BEARINGS
BEARINGS ARE A BASED ASSUMPTION THAT THE EAST LINE OF THE SOUTHEAST 1/4 OF SECTION 1 BEARS S01°15'55"W. MONUMENTS DESCRIBED HEREON.

BASIS OF ELEVATION
BENCH MARK (M25) LOCATED IN THE NE 1/4 OF SECTION 25, T2S, R99W, 6th P.M., TAKEN FROM THE YANKEE GULCH QUADRANGLE, COLORADO, RIO BLANCO COUNTY, 7.5 MINUTE QUAD. (TOPOGRAPHIC MAP) PUBLISHED BY THE UNITED STATES DEPARTMENT OF THE INTERIOR, GEOLOGICAL SURVEY. SAID ELEVATION IS MARKED AS BEING 6971 FEET.



TEP Rocky Mountain LLC

**FEDERAL RGU 322-12-298
LOT 36, SECTION 1, T2S, R98W, 6th P.M.
RIO BLANCO COUNTY, COLORADO**

SURVEYED BY	BART HUNTING	08-18-21	SCALE
DRAWN BY	M.D.	10-05-21	1" = 1000'

WELL LOCATION PLAT



UELS, LLC
Corporate Office * 85 South 200 East
Vernal, UT 84078 * (435) 789-1017