

TEP Rocky Mountain LLC

**FEDERAL RGU 321-7-297
LOT 36, SECTION 1, T2S, R98W, 6th P.M.
RIO BLANCO COUNTY, COLORADO**

BASIS OF BEARINGS

BEARINGS ARE A BASED ASSUMPTION THAT THE EAST LINE OF THE SOUTHEAST 1/4 OF SECTION 1 BEARS S89°15'55"W. MONUMENTS DESCRIBED HEREON.

BASIS OF ELEVATION

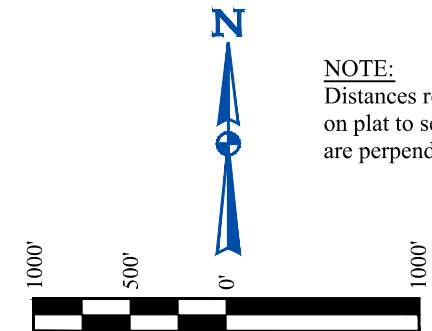
BENCH MARK (M25) LOCATED IN THE NE 1/4 OF SECTION 25, T2S, R99W, 6th P.M., TAKEN FROM THE YANKEE GULCH QUADRANGLE, COLORADO, RIO BLANCO COUNTY, 7.5 MINUTE QUAD. (TOPOGRAPHIC MAP) PUBLISHED BY THE UNITED STATES DEPARTMENT OF THE INTERIOR, GEOLOGICAL SURVEY. SAID ELEVATION IS MARKED AS BEING 6971 FEET.

T2S, R98W, 6th P.M.

LEGEND:

- = PROPOSED WELLHEAD.
- = TOP OF PRODUCTION ZONE/TARGET BOTTOM HOLE.
- ▲ = SECTION CORNERS LOCATED. (NAD 83)
- △ = SECTION CORNERS RE-ESTABLISHED. (Not Set on Ground.) (NAD 83)

NOTE:
Distances referenced on plat to section lines are perpendicular.



PDOP = 1.5

NAD 83 (SURFACE LOCATION)

LATITUDE = 39°54'03.61" (39.901003°)
LONGITUDE = 108°20'09.41" (108.335947°)
STATE PLANE NAD 83 (CO. NORTH)
N: 1219507.05' E: 2204481.47'
STATE PLANE NAD 83 (CO. CEN.)
N: 1765493.76' E: 2204428.92'

NAD 83 (TPZ/TBH)

LATITUDE = 39°53'49.42" (39.897060°)
LONGITUDE = 108°19'37.07" (108.326964°)
STATE PLANE NAD 83 (CO. NORTH)
N: 1217991.01' E: 2206954.93'
STATE PLANE NAD 83 (CO. CEN.)
N: 1763979.52' E: 2206903.68'

CERTIFICATE

THIS IS TO CERTIFY THAT THE ABOVE PLAT WAS PREPARED AND THE LOCATION AS SHOWN WAS STAKED ON THE GROUND FROM FIELD NOTES OF ACTUAL SURVEYS MADE BY ME OR UNDER MY SUPERVISION AND THAT THE SAME ARE TRUE AND CORRECT TO THE BEST OF MY KNOWLEDGE AND BELIEF.

Handwritten Signature: Harold Marshall
REGISTERED LAND SURVEYOR
REGISTRATION NO. 19980
STATE OF COLORADO 08-01-22

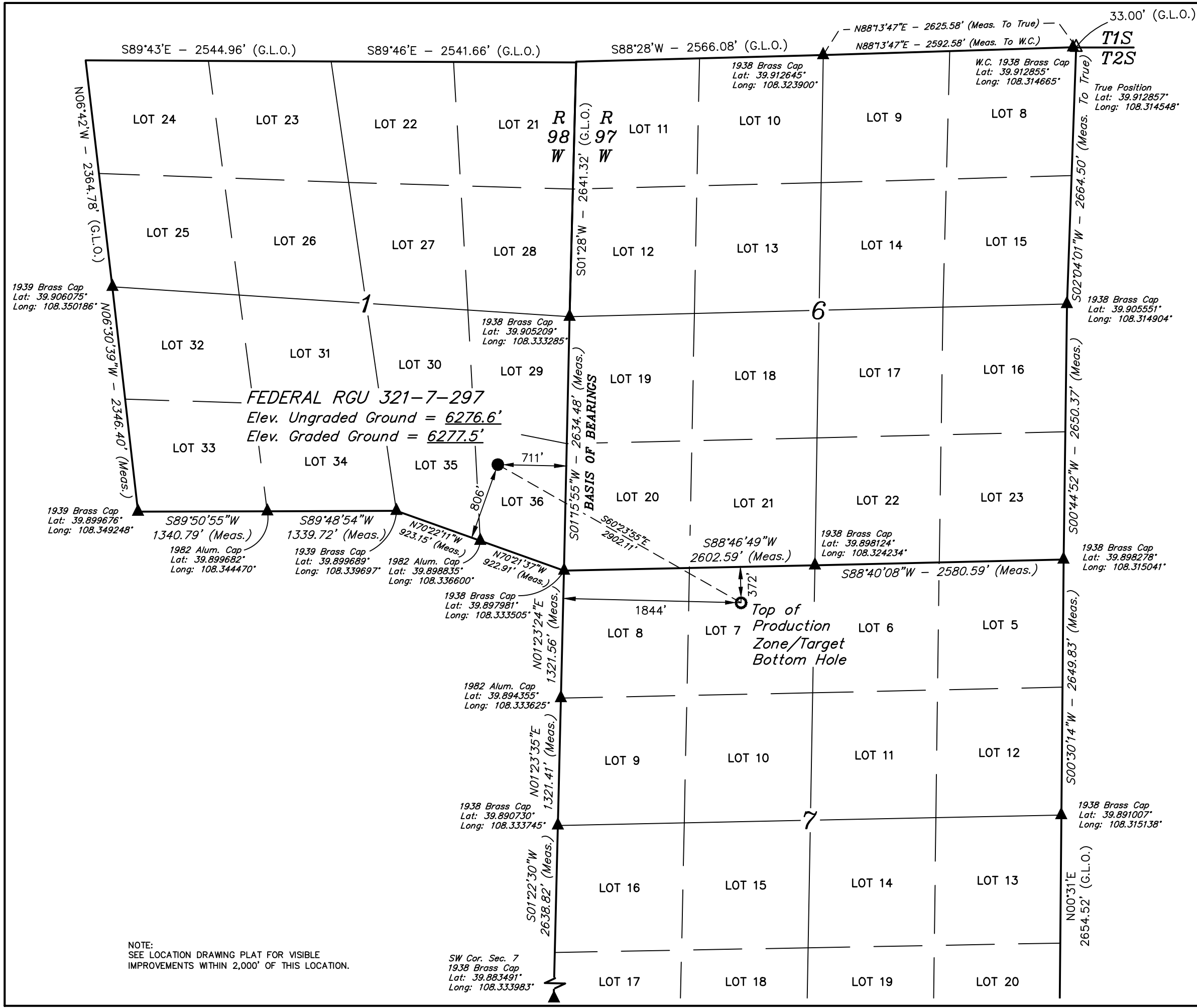
REV: 2 01-31-22 T.L.L. (LABEL UPDATES)

UINTEAH
ENGINEERING & LAND SURVEYING

UELS, LLC
Corporate Office * 85 South 200 East
Vernal, UT 84078 * (435) 789-1017

SURVEYED BY	BART HUNTING	08-18-21	SCALE
DRAWN BY	M.D.	10-05-21	1" = 1000'

WELL LOCATION PLAT



NOTE:
SEE LOCATION DRAWING PLAT FOR VISIBLE IMPROVEMENTS WITHIN 2,000' OF THIS LOCATION.

SW Cor. Sec. 7
1938 Brass Cap
Lat: 39.883491°
Long: 108.333983°