



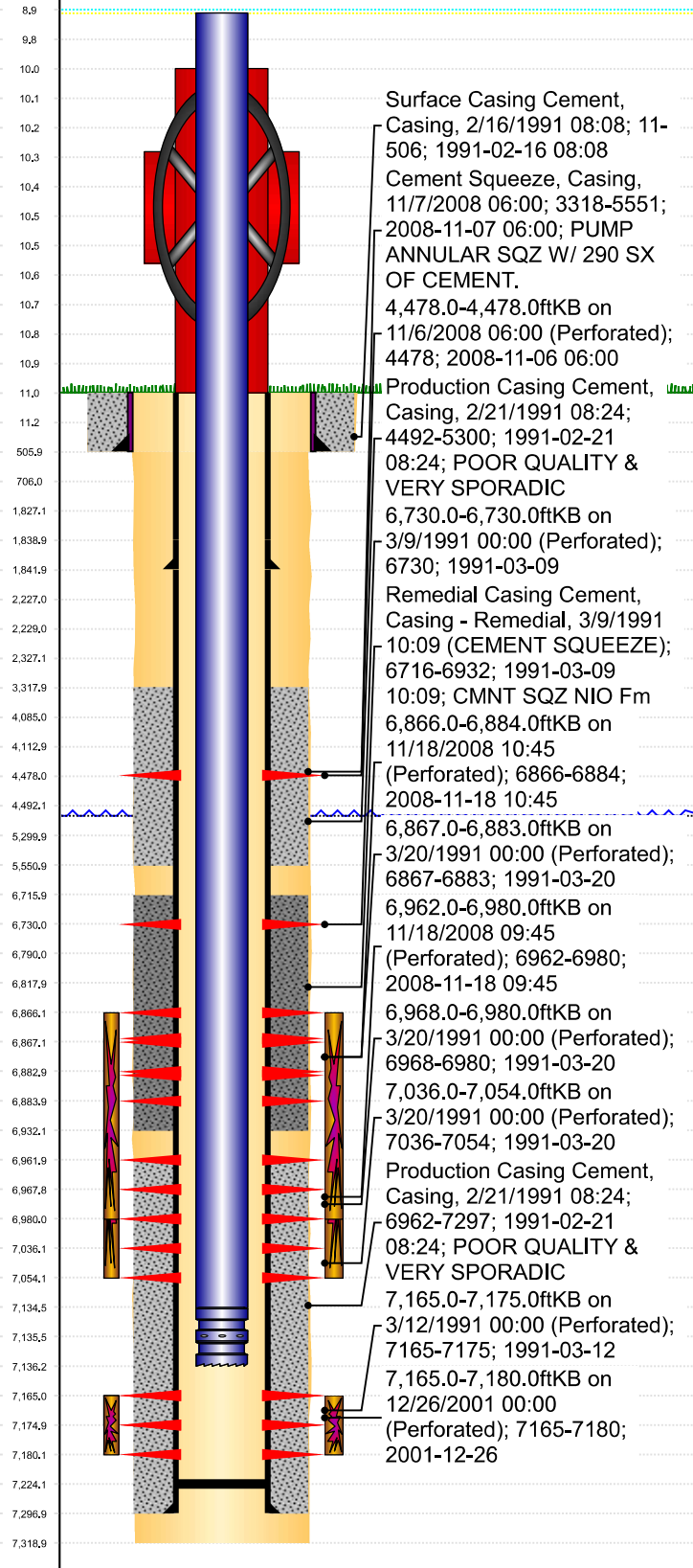
# P&A Wellbore For State

Well Name: ROOT TRUST 18-16G

Original Hole [Land]

MD  
(ftK  
B)

Vertical schematic (actual)



Surface Casing Cement, Casing, 2/16/1991 08:08; 11-506; 1991-02-16 08:08  
 Cement Squeeze, Casing, 11/7/2008 06:00; 3318-5551; 2008-11-07 06:00; PUMP ANNULAR SQZ W/ 290 SX OF CEMENT.  
 4,478.0-4,478.0ftKB on 11/6/2008 06:00 (Perforated); 4478; 2008-11-06 06:00  
 Production Casing Cement, Casing, 2/21/1991 08:24; 4492-5300; 1991-02-21 08:24; POOR QUALITY & VERY SPORADIC  
 6,730.0-6,730.0ftKB on 3/9/1991 00:00 (Perforated); 6730; 1991-03-09  
 Remedial Casing Cement, Casing - Remedial, 3/9/1991 10:09 (CEMENT SQUEEZE); 6716-6932; 1991-03-09 10:09; CMNT SQZ NIO Fm  
 6,866.0-6,884.0ftKB on 11/18/2008 10:45 (Perforated); 6866-6884; 2008-11-18 10:45  
 6,867.0-6,883.0ftKB on 3/20/1991 00:00 (Perforated); 6867-6883; 1991-03-20 6,962.0-6,980.0ftKB on 11/18/2008 09:45 (Perforated); 6962-6980; 2008-11-18 09:45  
 6,968.0-6,980.0ftKB on 3/20/1991 00:00 (Perforated); 6968-6980; 1991-03-20 7,036.0-7,054.0ftKB on 3/20/1991 00:00 (Perforated); 7036-7054; 1991-03-20  
 Production Casing Cement, Casing, 2/21/1991 08:24; 6962-7297; 1991-02-21 08:24; POOR QUALITY & VERY SPORADIC  
 7,165.0-7,175.0ftKB on 3/12/1991 00:00 (Perforated); 7165-7175; 1991-03-12  
 7,165.0-7,180.0ftKB on 12/26/2001 00:00 (Perforated); 7165-7180; 2001-12-26

### Well Header

Surface UWI 0512314896	Business Unit Rockies	Gov Auth Dist	Prod Tree Loc Land
Orig. KB to Gnd (ft) 11.00	Original Spud Date 2/15/1991	Abandon Date	Well Sub-Status SI
Comment PATCH @ 1842', SQZ HOLE @ 6760'			

### Surface Location (Congressional)

Qtr 3 SE	Qtr 4 SE	Section 18	Twonshp 4	Twonsh... N	Range 65	Rng E... W	Latitude (°) 40.30694166 9	Longitude (°) -104.69870514
-------------	-------------	---------------	--------------	----------------	-------------	---------------	----------------------------------	--------------------------------

### Wellbore Sections

Section Des	Hole Size (in)	Top Depth (ftKB)	Btm Depth (ftKB)
Surface	12 1/4	11.0	506.0
Production	7 7/8	506.0	7,319.0

### Casing Strings

Csg Des	Run Date	OD (in)	Wt/Len (lb/ft)	Grade	Top Depth (MD) (ftKB)	Set Depth (MD) (ftKB)
Surface	2/16/1991	8 5/8	23.00		11	506
Production Casing	3/8/1991	4 1/2	11.60		11	1842
Production Casing	2/21/1991	4 1/2	11.60	M-75	11	7297

### Cement

Des	Start Date	Top (ftKB)	Btm (ftKB)
SURFACE CASING CEMENT	2/16/1991	11.0	506.0
PRODUCTION CASING CEMENT	2/21/1991	4,492.0	5,300.0
PRODUCTION CASING CEMENT	2/21/1991	6,962.0	7,297.0
CEMENT SQUEEZE	3/9/1991	6,716.0	6,932.0
CEMENT SQUEEZE	11/7/2008	3,318.0	5,551.0

### Zone Statuses

Zone Name	Status Date	Status	Fluid Type	Job	Prod Method
NIORARA	4/11/2013	PR		RE-FRAC, 11/4/2008 06:00	Flowing
NIORARA	3/22/2017	SI			
CODELL	3/11/2009	PR			
CODELL	2/1/2010	PR	Water		

### Perforation Data

Linked Zone	Explosive Type	Entered Shot Total	Top (ftKB)	Btm (ftKB)	Date
SUSSEX, Original Hole		2	4,478.0	4,478.0	11/6/2008
NIORARA, Original Hole		1	6,730.0	6,730.0	3/9/1991
NIORARA, Original Hole	A	72	6,866.0	6,884.0	11/18/2008
NIORARA, Original Hole	A	10	6,867.0	6,883.0	3/20/1991
NIORARA, Original Hole	B	72	6,962.0	6,980.0	11/18/2008
NIORARA, Original Hole	B	10	6,968.0	6,980.0	3/20/1991
NIORARA, Original Hole	C	8	7,036.0	7,054.0	3/20/1991
CODELL, Original Hole		60	7,165.0	7,180.0	12/26/2001
CODELL, Original Hole		40	7,165.0	7,175.0	3/12/1991

### Stim/Frac Stage

Zone	Start Date	Top (ftKB)	Btm (ftKB)
NIORARA, Original Hole	12/8/2008	6,866.0	6,980.0
NIORARA, Original Hole	3/22/1991	6,867.0	7,054.0
CODELL, Original Hole	3/14/1991	7,165.0	7,175.0
CODELL, Original Hole	1/3/2002	7,165.0	7,180.0

### Other In Hole

Run Date	Des	Make	OD (in)	Top (ftKB)	Btm (ftKB)

### Logs

Date	Type	Depth Top (MD) (ftKB)	Btm (ftKB)
2/28/1991	CEMENT BOND	4,250	7,231.0
3/1/1991	CEMENT BOND	4,450	5,350.0
3/12/1991	CEMENT BOND	6,590	7,000.0
11/4/2008	CBL/CCL/GR	1,650	6,822.0
11/11/2008	CBL/CCL/GR	3,149	6,774.0

### Wellbore Plug Back Total Depths

Date	Type	Com	PBTD (ftKB)
11/18/2008	PLUG	W/L TAGGED TOP OF SAND PLUG @ 7011'KB	7,011
3/5/2009	FILL	44' OF RAT HOLE	7,224