

HALLIBURTON

iCem® Service

EXTRACTION OIL & GAS INC
Warbler 13W-27-07 Production

API 05-001-10533

Job Date: Friday, September 15, 2023

Sincerely,

Rafael Giorgana

Legal Notice

Disclaimer:

All information in this report is provided subject to the terms and conditions which govern the services provided by Halliburton. Halliburton personnel use their best efforts in gathering information and their best judgment in interpreting it, but any interpretation, research, analysis or recommendation furnished by Halliburton are opinions based upon inferences from measurements and empirical relationships and assumptions, which inferences and empirical relationships and assumptions are not infallible, and with respect to which professionals in the industry may differ. iCem 3D Displacement results are used to understand how fluids intermix during a cement job. Simulation and 3D displacement results are not intended as and should not be used as a replacement for bond logs in determining top of cement. Current 3D model calculations are known to model more volume than the input volume for standard cases due to known calculation improvements required. For rotational cases, the modeled volume will be impacted by the same calculations impacting the standard cases, as well as additional constraints imposed to make the calculation time required operationally feasible. Therefore, until further notice, 3D displacement results should not be used for replacement of a bond log, or used as an identifier of top of cement. **HALLIBURTON IS UNABLE TO GUARANTEE THE ACCURACY OF ANY CHART INTERPRETATION, RESEARCH ANALYSIS, OR JOB RECOMMENDATION** and any interpretation or recommendation is not for use of or reliance upon by any third party. The customer has full responsibility for any of its decisions which are based on the information provided in this report.

Table of Contents

Job Design	4
Overview.....	4
Pressure Schedule Inputs	4
Pressure Schedule Table.....	4
Real-Time Job Summary	5
Job Event Log.....	5
Attachments.....	9
CEMENT JOB.png.....	9
Custom Graphs.....	10
Custom Graph.....	10
Appendix	Error! Bookmark not defined.
3D Wellbore Schematic	Error! Bookmark not defined.

1.0 Job Design

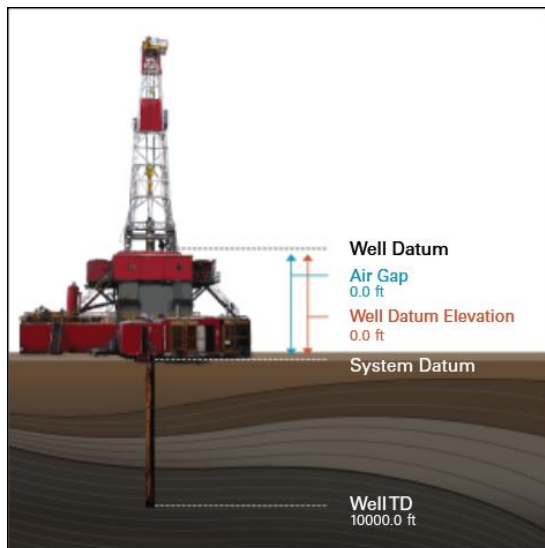
1.1 Overview

Job Type Primary Cement Job

Injection Path Casing/Conventional

Foam Job No

Well Snapshot



Simulations Performed

1.2 Pressure Schedule Inputs

Pressure Mode Conventional

1.3 Pressure Schedule Table

Start (Pump Volume in bbl)	End (Pump Volume in bbl)	Pressure (psi)
0.00	End	0.00

2.0 Real-Time Job Summary

2.1 Job Event Log

Activity	Graph Label	Date	Time	Comments
Call Out	Call Out	9/14/20 23	13:00:0 0	CALLED OUT FOR THE CIVITAS RESOURCES-EBUS WARBLER #13W-27-07 PRODUCTION CASING JOB (REQUESTED ON LOCATION 1830 PM)
Pre-Convoy Safety Meeting	Pre-Convoy Safety Meeting	9/14/20 23	15:45:0 0	GOING OVER JOURNEY MANGEMENT WITH CREW AND VERIFY ALL EQUIPMENT AND MATERIALS ARE PROPERLY LOADED AND IF ANYTHING IS NEED TO TAKE TO CUSTOMER LOCATION
Crew Leave Yard	Crew Leave Yard	9/14/20 23	16:00:0 0	CREW LEAVING YARD FOR CUSTOMER LOCATION
Arrive At Loc	Arrive At Loc	9/14/20 23	17:30:0 0	ON LOCATION FOR THE CIVITAS RESOURCES-EBUS WARBLER #13W-27-07 PRODUCTION CASING JOB (REQUESTED ON LOCATION 1830 PM) RIG STILL HAD A LITTLE OVER 3000' OF CASING TO RUN AND HAD TO ROTATE DOWN LAST 300' TO GET TO BOTTOM
Other	Other	9/14/20 23	17:35:0 0	JOB DETAILS- TD-22365' SET@ 22347' OH- 8 1/2" TC- 22349.08 SJ- 5.03' 5 1/2" 20# HCP-110 PREV@ 2840' 9 5/8" 36# MUD- 9.1# OBM DISPLACEMENT- 40 MMCR, 456 BBLS FW/BIOCIDE 2- PLUGS COMP., 2- TOE SLEEVES
Pre-Rig Up Safety Meeting	Pre-Rig Up Safety Meeting	9/14/20 23	19:15:0 0	GOING OVER JSA ON HAZZARDS AND STEPS WE ARE GOING TO TAKE TO COMPLETE RIG-UP SAFELY (DISCUSSED STOP WORK AND NEEDED BREAKS DUE TO HEAT)
Rig-Up Completed	Rig-Up Completed	9/14/20 23	20:30:0 0	ALL HES EQUIPMENT IS RIGGED-UP,AIRED UP AND PRIMED UP FOR UP COMING CEMENT JOB
Pre-Job Safety Meeting	Pre-Job Safety Meeting	9/14/20 23	22:30:0 0	GOING OVER FINAL CHECKS WITH EVERYONE INVOLVED WITH CEMENT JOB AND DISCUSSED JSA ON POTENTIAL HAZZARDS (AT THIS POINT THE 5 CHECKS TO GO IS COMPLETED OR STOP WORK IS DONE)

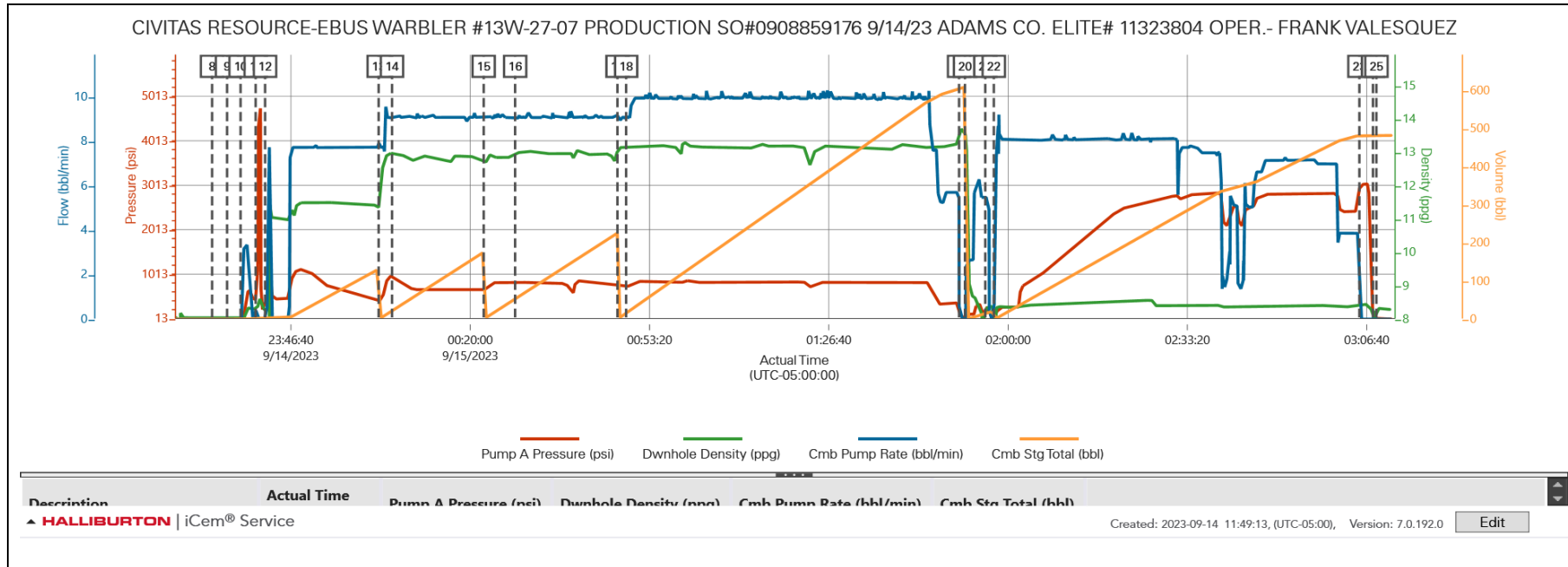
Start Job	Start Job	9/14/20 23	23:32:0 0	START ON-LINE CEMENT JOB ON THE CIVITAS RESOURCES-EBUS WARBLER #13W-27-07 PRODUCTION CASING
Drop Bottom Plug	Drop Bottom Plug	9/14/20 23	23:34:4 7	DROP COMP. 1000 PSI BOTTOM RUPTURE PLUG
Other	Other	9/14/20 23	23:37:1 8	KICKED OUT COMP. BOTTOM PLUG WITH 5 BBLS FRESH WATER FOR PRESSURE TEST
Test Lines	Test Lines	9/14/20 23	23:40:0 6	TESTED HES PUMPS AND LINES TO 5000 PSI (3200 PSI MAX ON CEMENT JOB DUE TO TOE SLEEVES)
Pump Spacer 1	Pump Spacer 1	9/14/20 23	23:41:5 1	SPACER- 120 BBLS TOTAL TUNE PRIME SPACER MIXED @ 11.5# EST TO OF SPACER-0'(SURFACE) EST HEIGHT OF SPACER-2506' 40 BBLS PUMPED 7.7 BPM @ 1080 PSI 80 BBLS PUMPED 7.8 BPM @ 680 PSI 120 BBLS PUMPED 7.8 BPM @ 500 PSI
Pump Cement	Pump Cement	9/15/20 23	00:02:5 8	CAP CEMENT- 171 BBLS TOTAL OF CAP CEMENT MIXED @ 13# (585 SKS) EST TOP OF CAP CEMENT @ 0'(SURFACE), EST HEIGHT OF CAP CEMENT- 3569' 20 BBLS PUMPED 9 BPM @ 820 PSI 100 BBLS PUMPED 9 BPM @ 660 PSI 171 BBLS PUMPED 650 PSI
Check Weight	Check Weight	9/15/20 23	00:05:2 7	CHECK WEIGHT ON PUMP WITH SCALES (GOOD WEIGHT ON CAP CEMENT)
Pump Lead Cement	Pump Lead Cement	9/15/20 23	00:22:3 0	LEAD CEMENT- 228 BBLS TOTAL OF LEAD CEMENT MIXED @ 13# (810 SKS) EST TOP OF LEAD CEMENT-2484' EST HEIGHT OF LEAD CEMENT-5527' 20 BBLS PUMPED 9 BPM @ 820 PSI 100 BBLS PUMPED 9 BPM @ 820 PSI 228 BBLS PUMPED 9 BPM @ 810 PSI

Check Weight	Check Weight	9/15/20 23	00:28:2 1	CHECK WEIGHT ON PUMP WITH SCALES (GOOD WEIGHT ON LEAD CEMENT)
Pump Tail Cement	Pump Tail Cement	9/15/20 23	00:47:2 2	TAIL CEMENT- 585 BBLS TOTAL OF TAIL CEMENT MIXED @ 13.2# (2105 SKS) EST TOP OF TAIL CEMENT-8009', EST HEIGHT OF TAIL CEMENT-14,338') 40 BBLS PUMPED 10 BPM @ 900 PSI 200 BBLS PUMPED 10 BPM @ 930 PSI 400 BBLS PUMPED 10 BPM @ 830 PSI 585 BBLS PUMPED 6 BPM @ 380 PSI
Check Weight	Check Weight	9/15/20 23	00:48:5 9	CHECK WEIGHT ON PUMP WITH SCALES (GOOD WEIGHT ON TAIL CEMENT)
Shutdown	Shutdown	9/15/20 23	01:50:5 3	SHUTDOWN TO CLEAN HES PUMPS AND LINES TO DROP COMP. TOP PLUG
Clean Lines	Clean Lines	9/15/20 23	01:51:5 9	WASH HES PUMPS AND LINES TO OPEN TOP TANK
Drop Top Plug	Drop Top Plug	9/15/20 23	01:55:4 5	DROP COMP. TOP PLUG
Pump Displacement	Pump Displacement	9/15/20 23	01:57:2 0	DISPLACEMENT- 496 BBLS TOTAL OF DISPLACEMENT CAL. TO BUMP PLUG (FIRST 40 BBLS MMCR/456 BBLS FW/BIOCIDE)
Bump Plug	Bump Plug	9/15/20 23	03:05:1 9	BUMP PLUG @ 496 BBLS TOTAL OF DISPLACEMENT FROM 2450 PSI TO 3000 PSI
Other	Other	9/15/20 23	03:07:5 0	BLEED OFF PRESSURE TO CHECK FLOATS (FLOATS HELD GOOD BLEED BACK 5 BBLS)
End Job	End Job	9/15/20 23	03:08:2 9	ON-LINE CEMENT JOB COMPLETED ON THE CIVITAS RESOURCES-EBUS WARBLER #13W-27-07 PRODUCTION CASING (120 BBLS SPACER & 52 BBLS CEMENT BACK TO SURFACE)
Pre-Rig Down Safety Meeting	Pre-Rig Down Safety Meeting	9/15/20 23	03:15:0 0	GOING OVER JSA ON HAZZARDS AND STEPS WE ARE GOING TO TAKE TO COMPLETE RIGGING-DOWN SAFELY (DISCUSSED STOP WORK AND NEEDED BREAKS DUE TO HEAT)

Rig-Down Completed	Rig-Down Completed	9/15/2023	05:00:00	RIG-DOWN WAS COMPLETED NO INJURIES WERE REPORTED, ALL EQUIPEMENT IS READY FOR JOURNEY MANGEMENT MEETING
Pre-Convoy Safety Meeting	Pre-Convoy Safety Meeting	9/15/2023	05:30:00	GOING OVER JOURNEY MANGEMENT WITH CREW AND VERIFY ALL EQUIPMENT IS READY FOR TRAVEL, EITHER TO OTHER CUSTOMER LOCATION OR HES YARD
Depart Location	Depart Location	9/15/2023	06:00:00	JOB COMPLETED AND CREW IS HEAD OUT

3.0 Attachments

3.1 CEMENT JOB.png



4.0 Custom Graphs

4.1 Custom Graph

