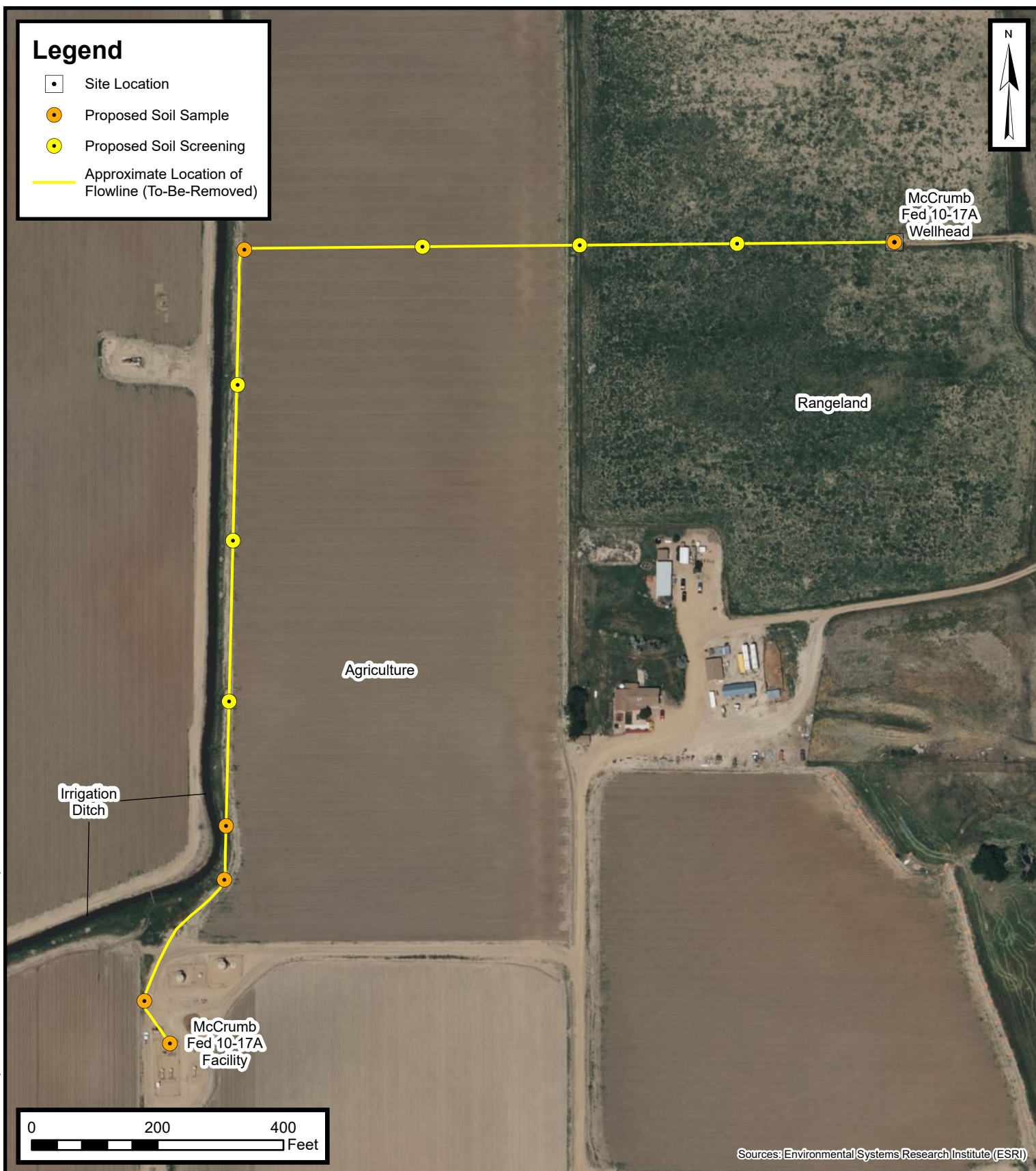


Default Folder: C:\Users\Wyatt Buckner\OneDrive - ENSOLUM, LLC\Enso\GIS0 - Projects\Kerr-McGee Oil & Gas Onshore - LP\09A1417654 - McCrumb Fed 10-17A Wellhead



Proposed Flowline Excavation and Soil Sampling Locations Map

McCrumb Fed 10-17A Wellhead
Kerr-McGee Oil & Gas Onshore, LP
NWSE SEC 17-T2N-R66W
Weld County, CO

Project Number: 09A1417654

FIGURE
3