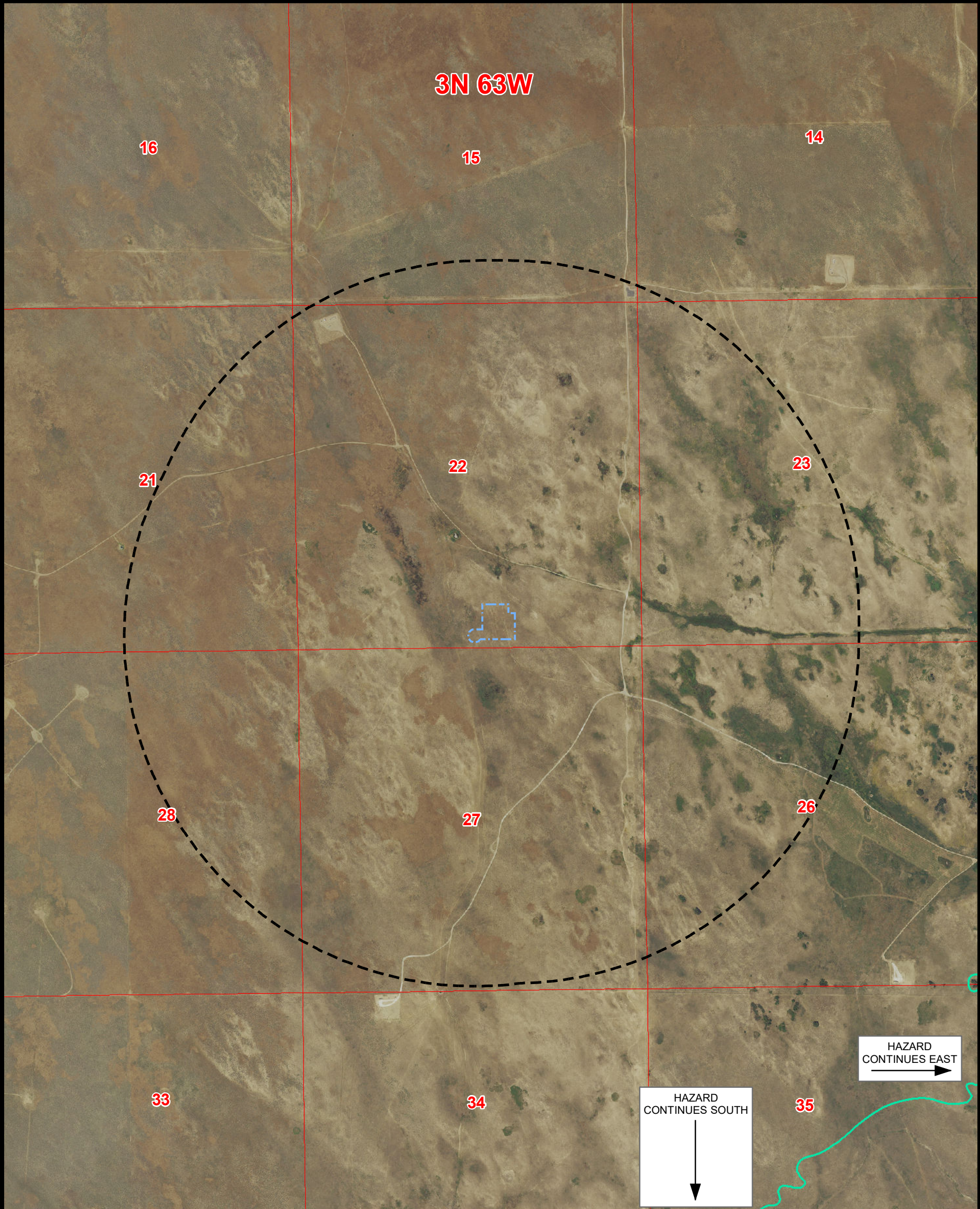


# GEOLOGIC HAZARD MAP EAST STREET 14-22HZ

SECTION 22, TOWNSHIP 3 NORTH, RANGE 63 WEST, 6TH P.M., WELD COUNTY, COLORADO



K:\ANADARKO\2017\2017\_197\_CERVI\_RANCH\_T4N\_R63W\GIS\COLT\_OGDP\09\_EAST\_STREETFORM\_2\EA\EA\STREET\_GEOLOGIC\_HAZARDS\_MAP.mxd 3/22/2023 6:30:21 PM

### Legend

- PROPOSED WORKING PAD SURFACE
- 1 MILE BUFFER - WORKING PAD SURFACE
- 100-YEAR FLOODPLAIN (EFFECTIVE, 2016)
- 100-YEAR FLOODWAY (PRELIMINARY, 2020)
- 100-YEAR FLOODPLAIN (PRELIMINARY, 2020)

NOTE:  
THIS MAP IS A COMPILATION OF PUBLICLY AVAILABLE DATA. THE ACCURACY AND COMPLETENESS OF SAID DATA HAS NOT BEEN VERIFIED BY 609 CONSULTING, LLC. EXISTING CONDITIONS MAY DIFFER FROM WHAT IS SHOWN.

**Kerr-McGee Oil &  
Gas Onshore LP**  
1099 18th Street  
Denver, Colorado 80202

**LOVELAND OFFICE**  
6706 North Franklin Avenue  
Loveland, Colorado 80538  
Phone 970-776-4331

**SHERIDAN OFFICE**  
1095 Saberton Avenue  
Sheridan, Wyoming 82801  
Phone 307-674-0609

Drawn by: RJ  
Revised:

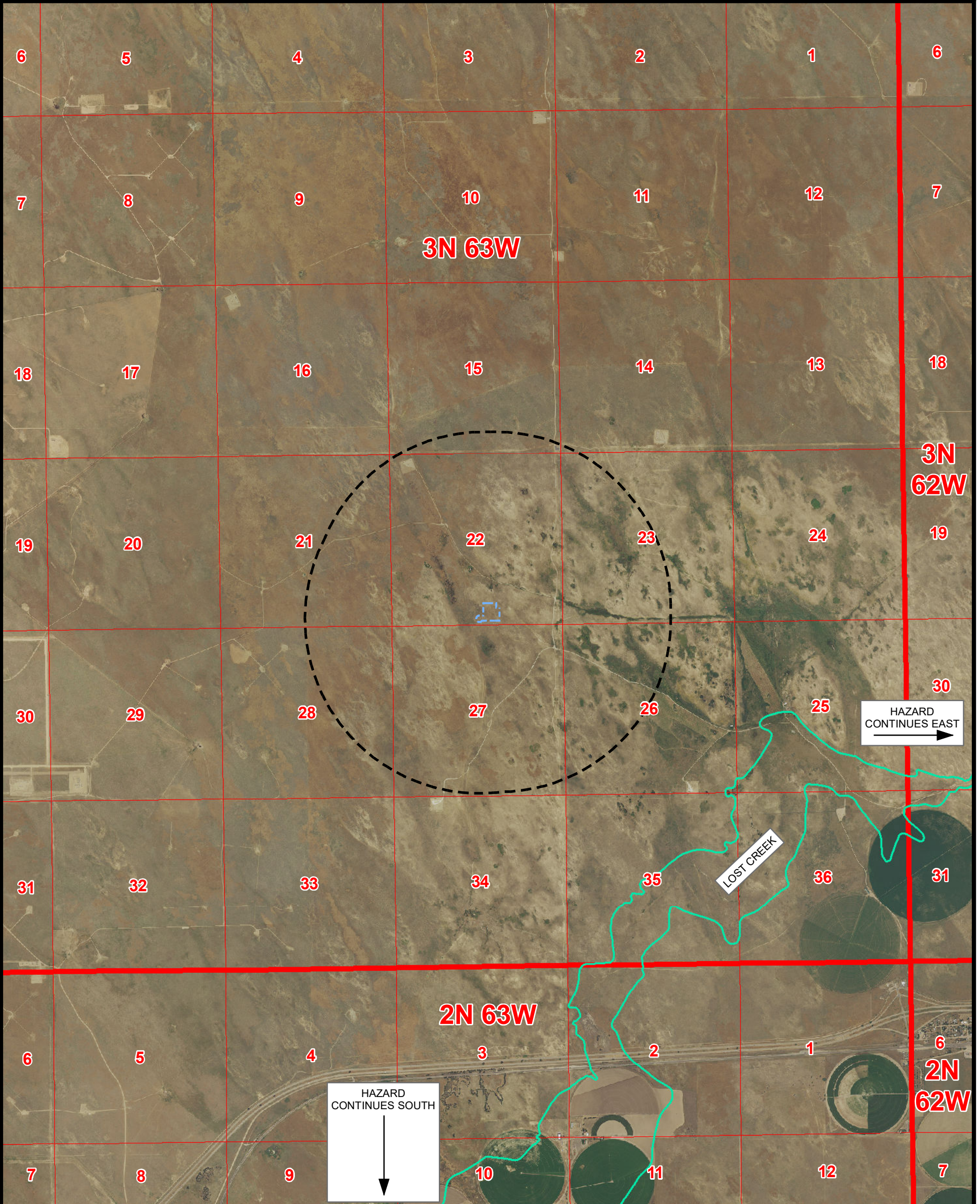
Date: 22 Mar 2023  
Date:

N

NAD83 CO-Nft  
1" = 1,500ft





# GEOLOGIC HAZARD MAP EAST STREET 14-22HZ

SECTION 22, TOWNSHIP 3 NORTH, RANGE 63 WEST, 6TH P.M., WELD COUNTY, COLORADO



K:\ANADARKO\2017\2017\_197\_CERVI\_RANCH\_T4N\_R63W\GIS\COLT\_OGD\P09\_EAST STREET\FORM\_2\EA\_EAST\_STREET\_GEOLOGIC\_HAZARDS\_MAP\_ZOOMED\_OUT.mxd 3/22/2023 6:28:10 PM

### Legend

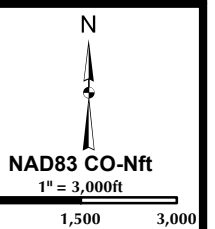
-  PROPOSED WORKING PAD SURFACE
-  1 MILE BUFFER - WORKING PAD SURFACE
-  100-YEAR FLOODPLAIN (EFFECTIVE, 2016)
-  100-YEAR FLOODWAY (PRELIMINARY, 2020)
-  100-YEAR FLOODPLAIN (PRELIMINARY, 2020)

NOTE:  
THIS MAP IS A COMPILATION OF PUBLICLY AVAILABLE DATA. THE ACCURACY AND COMPLETENESS OF SAID DATA HAS NOT BEEN VERIFIED BY 609 CONSULTING, LLC. EXISTING CONDITIONS MAY DIFFER FROM WHAT IS SHOWN.

**Kerr-McGee Oil & Gas Onshore LP**  
1099 18th Street  
Denver, Colorado 80202



**LOVELAND OFFICE**  
6706 North Franklin Avenue  
Loveland, Colorado 80538  
Phone 970-776-4331  
**SHERIDAN OFFICE**  
1095 Saberton Avenue  
Sheridan, Wyoming 82801  
Phone 307-674-0609



Drawn by: RJ  
Revised:

Date: 22 Mar 2023  
Date:

I certify that I am a Professional Geologist meeting the educational requirements and professional work experience detailed in C.R.S. 23-41-208(b). I have reviewed information pertaining to this Oil and Gas Location, the surrounding area and have identified no Geologic Hazards within a one-mile radius.

Datasets, maps, and published papers used to evaluate other possible geologic hazards included in C.R.S. § 24-65.1-103 are listed below.

Sincerely,  
Kerr-McGee Oil & Gas Onshore LP

A handwritten signature in black ink, appearing to read "John Piekara". The signature is fluid and cursive, with a large initial "J" and "P".

John Piekara  
Regulatory Advisor

- Floodplain
    - COGCC Floodplains (FEMA) [https://cogccmap.state.co.us/cogcc\\_gis\\_online/](https://cogccmap.state.co.us/cogcc_gis_online/)
    - National Flood Hazard Layer (NFHL) <https://hazards-fema.maps.arcgis.com/apps/webappviewer/>
    - Weld County: <https://www.weldgov.com/Government/Departments/Planning-and-Zoning/Floodplain-Management>
  - Surface Mines
    - COGCC DRMS Mine: [https://cogccmap.state.co.us/cogcc\\_gis\\_online/](https://cogccmap.state.co.us/cogcc_gis_online/)
    - Weld County: <https://www.weldgov.com/Government/Departments/Planning-and-Zoning>
  - Earthquakes:
    - USGS: <https://www.usgs.gov/natural-hazards/earthquake-hazards/science/>
    - USGS: <https://earthquake.usgs.gov/earthquakes/map/>
  - Landslides
    - CGS: <https://cologeosurvey.maps.arcgis.com/apps/webappviewer/>
  - Sub-Surface Mines
    - COGCC Coal Mine: [https://cogccmap.state.co.us/cogcc\\_gis\\_online/](https://cogccmap.state.co.us/cogcc_gis_online/)
    - Roberts, S.B., Hynes, J.L., and Woodward, C.L. Maps Showing the Extent of Mining, Locations of Mine Shafts, Adits, Air Shafts, and Bedrock Faults, and Thickness of Overburden above Abandoned Coal Mines in the Boulder-Weld Coal Field, Boulder, Weld and Adams Counties, Colorado. 1:48:000. Denver, CO: US Geological Survey: 2001
    - Ivery, J.B., and Hynes, J.L., Subsidence Hazard Map Boulder-Weld Coal Field Boulder and Weld Counties, Colorado. Map No. 7361-6 1:24,000. Colorado Geological Survey: 1974
-