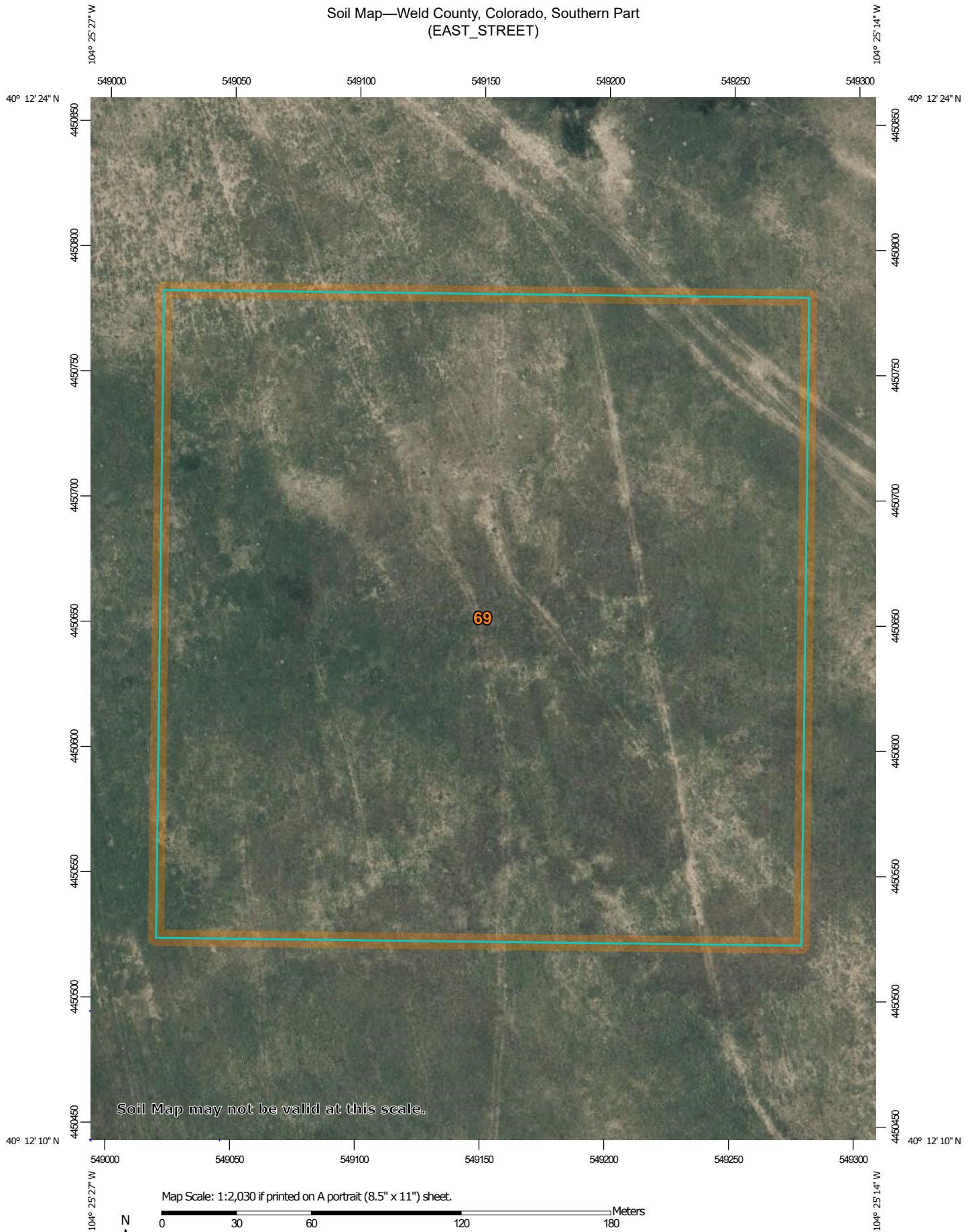
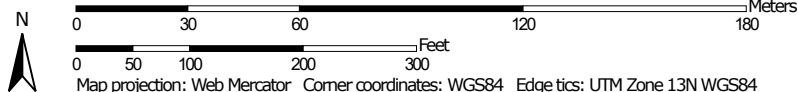


Soil Map—Weld County, Colorado, Southern Part
(EAST_STREET)



Map Scale: 1:2,030 if printed on A portrait (8.5" x 11") sheet.




Map projection: Web Mercator Corner coordinates: WGS84 Edge tics: UTM Zone 13N WGS84



MAP LEGEND

Area of Interest (AOI)

 Area of Interest (AOI)

Soils

 Soil Map Unit Polygons

 Soil Map Unit Lines

 Soil Map Unit Points

Special Point Features



Blowout



Borrow Pit



Clay Spot



Closed Depression



Gravel Pit



Gravelly Spot



Landfill



Lava Flow



Marsh or swamp



Mine or Quarry



Miscellaneous Water



Perennial Water



Rock Outcrop



Saline Spot



Sandy Spot



Severely Eroded Spot



Sinkhole



Slide or Slip



Sodic Spot



Spoil Area



Stony Spot



Very Stony Spot



Wet Spot



Other



Special Line Features

Water Features



Streams and Canals

Transportation



Rails



Interstate Highways



US Routes



Major Roads



Local Roads

Background



Aerial Photography

MAP INFORMATION

The soil surveys that comprise your AOI were mapped at 1:24,000.

Warning: Soil Map may not be valid at this scale.

Enlargement of maps beyond the scale of mapping can cause misunderstanding of the detail of mapping and accuracy of soil line placement. The maps do not show the small areas of contrasting soils that could have been shown at a more detailed scale.

Please rely on the bar scale on each map sheet for map measurements.

Source of Map: Natural Resources Conservation Service

Web Soil Survey URL:

Coordinate System: Web Mercator (EPSG:3857)

Maps from the Web Soil Survey are based on the Web Mercator projection, which preserves direction and shape but distorts distance and area. A projection that preserves area, such as the Albers equal-area conic projection, should be used if more accurate calculations of distance or area are required.

This product is generated from the USDA-NRCS certified data as of the version date(s) listed below.

Soil Survey Area: Weld County, Colorado, Southern Part

Survey Area Data: Version 21, Sep 1, 2022

Soil map units are labeled (as space allows) for map scales 1:50,000 or larger.

Date(s) aerial images were photographed: Jun 8, 2021—Jun 12, 2021

The orthophoto or other base map on which the soil lines were compiled and digitized probably differs from the background imagery displayed on these maps. As a result, some minor shifting of map unit boundaries may be evident.

Map Unit Legend

Map Unit Symbol	Map Unit Name	Acres in AOI	Percent of AOI
69	Valent sand, 0 to 3 percent slopes	16.6	100.0%
Totals for Area of Interest		16.6	100.0%

Weld County, Colorado, Southern Part

69—Valent sand, 0 to 3 percent slopes

Map Unit Setting

National map unit symbol: 2tczd

Elevation: 3,000 to 5,210 feet

Mean annual precipitation: 13 to 20 inches

Mean annual air temperature: 48 to 52 degrees F

Frost-free period: 130 to 166 days

Farmland classification: Farmland of local importance

Map Unit Composition

Valent and similar soils: 85 percent

Minor components: 15 percent

Estimates are based on observations, descriptions, and transects of the mapunit.

Description of Valent

Setting

Landform: Interdunes

Landform position (two-dimensional): Footslope, toeslope

Landform position (three-dimensional): Base slope

Down-slope shape: Linear

Across-slope shape: Linear

Parent material: Noncalcareous eolian sands

Typical profile

A - 0 to 5 inches: sand

AC - 5 to 12 inches: sand

C1 - 12 to 30 inches: sand

C2 - 30 to 80 inches: sand

Properties and qualities

Slope: 0 to 3 percent

Depth to restrictive feature: More than 80 inches

Drainage class: Excessively drained

Runoff class: Negligible

Capacity of the most limiting layer to transmit water (Ksat): High to very high (6.00 to 39.96 in/hr)

Depth to water table: More than 80 inches

Frequency of flooding: None

Frequency of ponding: None

Calcium carbonate, maximum content: 1 percent

Maximum salinity: Nonsaline (0.1 to 1.9 mmhos/cm)

Available water supply, 0 to 60 inches: Very low (about 2.4 inches)

Interpretive groups

Land capability classification (irrigated): 4e

Land capability classification (nonirrigated): 6e

Hydrologic Soil Group: A

Ecological site: R067BY015CO - Deep Sand, R072XA021KS - Sands (North) (PE 16-20)
Hydric soil rating: No

Minor Components

Dailey

Percent of map unit: 5 percent
Landform: Interdunes
Landform position (two-dimensional): Toeslope
Landform position (three-dimensional): Base slope
Down-slope shape: Linear
Across-slope shape: Concave
Ecological site: R067BY015CO - Deep Sand, R072XA022KS - Sandy (North) Draft (April 2010) (PE 16-20)
Hydric soil rating: No

Julesburg

Percent of map unit: 5 percent
Landform: Interdunes
Landform position (two-dimensional): Toeslope
Landform position (three-dimensional): Base slope
Down-slope shape: Linear
Across-slope shape: Linear
Ecological site: R067BY024CO - Sandy Plains, R072XA022KS - Sandy (North) Draft (April 2010) (PE 16-20)
Hydric soil rating: No

Vona

Percent of map unit: 5 percent
Landform: Interdunes
Landform position (two-dimensional): Toeslope
Landform position (three-dimensional): Base slope
Down-slope shape: Linear
Across-slope shape: Linear
Ecological site: R067BY024CO - Sandy Plains, R072XA022KS - Sandy (North) Draft (April 2010) (PE 16-20)
Hydric soil rating: No

Data Source Information

Soil Survey Area: Weld County, Colorado, Southern Part
Survey Area Data: Version 21, Sep 1, 2022