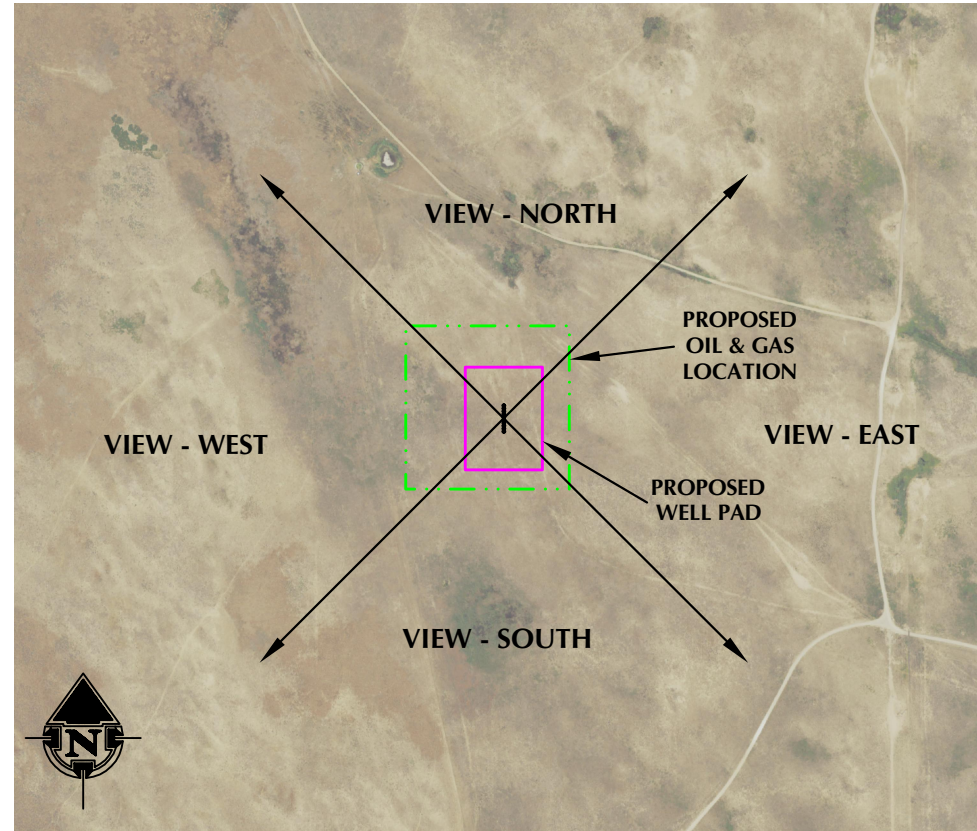


# WELL PAD LOCATION PICTURES EAST STREET 14-22HZ

SW1/4 SE1/4 & SE1/4 SW1/4 SECTION 22, TOWNSHIP 3 NORTH, RANGE 63 WEST, 6TH P.M., WELD COUNTY, COLORADO



LOCATION PICTURE OF EAST STREET 14-22HZ WELL PAD - CAMERA VIEW NORTH



VIEW - OVERHEAD  
AERIAL IMAGERY COURTESY OF NAIP  
(2021)



LOCATION PICTURE OF EAST STREET 14-22HZ WELL PAD - CAMERA VIEW EAST



LOCATION PICTURE OF EAST STREET 14-22HZ WELL PAD - CAMERA VIEW SOUTH



LOCATION PICTURE OF EAST STREET 14-22HZ WELL PAD - CAMERA VIEW WEST

K:\AMDRK\2017\2017\_197\_CERVL\_BANCH\_TN\_R63W\DWG\09\_EAST STREET\09\_EAST STREET.dwg, 3/22/2023 11:23:45 PM, sundberg

**609**  
CONSULTING, LLC

LOVELAND OFFICE  
6706 North Franklin Avenue  
Loveland, Colorado 80538  
Phone 970-776-4331

SHERIDAN OFFICE  
1095 Saberton Avenue  
Sheridan, Wyoming 82801  
Phone 307-674-0609

**Kerr-McGee Oil &  
Gas Onshore LP**  
1099 18th Street  
Denver, Colorado 80202

DATE SURVEYED: 2/14/23  
DATE: 3/22/23  
DRAFTER: CWB  
REVISED:

DATA SOURCES:  
-AERIAL IMAGERY COURTESY OF NAIP.