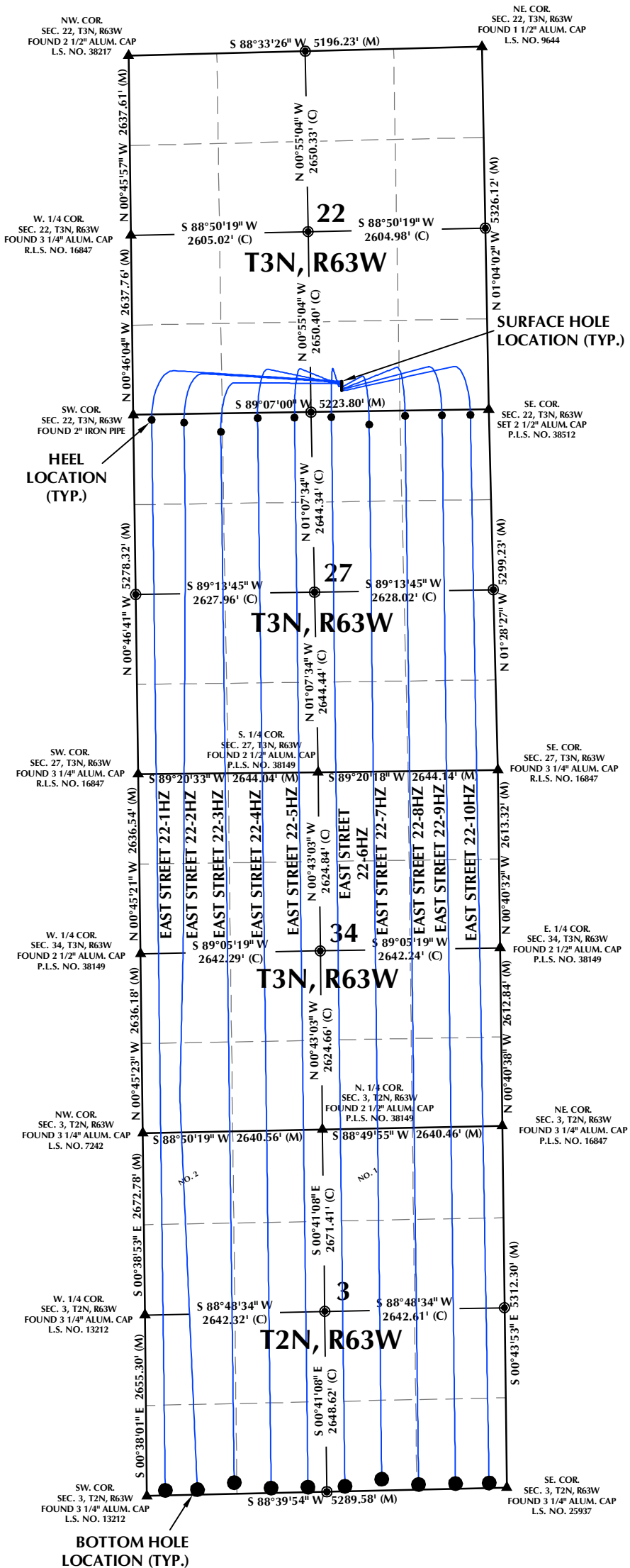
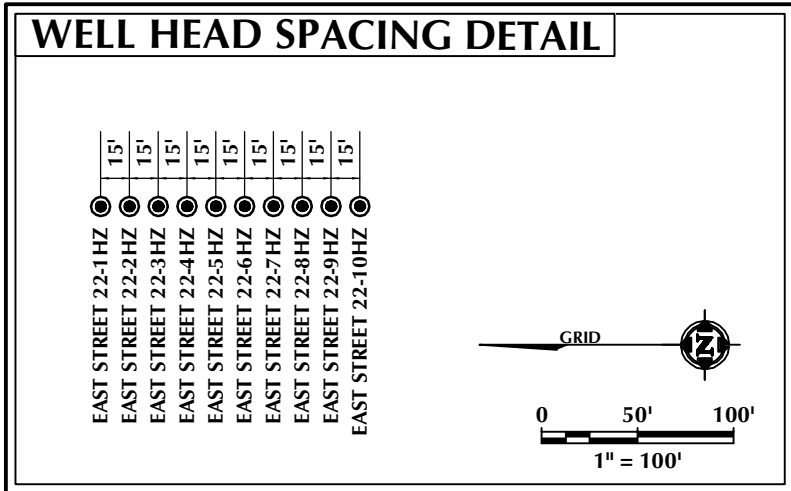


DIRECTIONAL WELL PLAT (COGCC) / MULTI-WELL PLAN (OGED) SECTIONS 22, 27 & 34, T3N, R63W & SECTION 3, T2N, R63W, 6TH P.M.



- WELL NOTES:**
- EAST STREET 22-1HZ**
SURFACE HOLE LOCATION: 446' FSL, 2153' FEL (SEC. 22)
HEEL LOCATION: 75' FNL, 270' FWL (SEC. 27)
BOTTOM HOLE LOCATION: 75' FSL, 270' FWL (SEC. 3)
 - EAST STREET 22-2HZ**
SURFACE HOLE LOCATION: 431' FSL, 2153' FEL (SEC. 22)
HEEL LOCATION: 125' FNL, 744' FWL (SEC. 27)
BOTTOM HOLE LOCATION: 75' FSL, 742' FWL (SEC. 3)
 - EAST STREET 22-3HZ**
SURFACE HOLE LOCATION: 416' FSL, 2153' FEL (SEC. 22)
HEEL LOCATION: 268' FNL, 1283' FWL (SEC. 27)
BOTTOM HOLE LOCATION: 165' FSL, 1285' FWL (SEC. 3)
 - EAST STREET 22-4HZ**
SURFACE HOLE LOCATION: 401' FSL, 2154' FEL (SEC. 22)
HEEL LOCATION: 75' FNL, 1827' FWL (SEC. 27)
BOTTOM HOLE LOCATION: 75' FSL, 1827' FWL (SEC. 3)
 - EAST STREET 22-5HZ**
SURFACE HOLE LOCATION: 386' FSL, 2154' FEL (SEC. 22)
HEEL LOCATION: 75' FNL, 2369' FWL (SEC. 27)
BOTTOM HOLE LOCATION: 76' FSL, 2369' FWL (SEC. 3)
 - EAST STREET 22-6HZ**
SURFACE HOLE LOCATION: 371' FSL, 2154' FEL (SEC. 22)
HEEL LOCATION: 75' FNL, 2313' FEL (SEC. 27)
BOTTOM HOLE LOCATION: 75' FSL, 2378' FEL (SEC. 3)
 - EAST STREET 22-7HZ**
SURFACE HOLE LOCATION: 356' FSL, 2155' FEL (SEC. 22)
HEEL LOCATION: 195' FNL, 1761' FWL (SEC. 27)
BOTTOM HOLE LOCATION: 165' FSL, 1836' FEL (SEC. 3)
 - EAST STREET 22-8HZ**
SURFACE HOLE LOCATION: 341' FSL, 2155' FEL (SEC. 22)
HEEL LOCATION: 75' FNL, 1229' FWL (SEC. 27)
BOTTOM HOLE LOCATION: 75' FSL, 1294' FEL (SEC. 3)
 - EAST STREET 22-9HZ**
SURFACE HOLE LOCATION: 326' FSL, 2155' FEL (SEC. 22)
HEEL LOCATION: 75' FNL, 687' FEL (SEC. 27)
BOTTOM HOLE LOCATION: 75' FSL, 752' FEL (SEC. 3)
 - EAST STREET 22-10HZ**
SURFACE HOLE LOCATION: 311' FSL, 2155' FEL (SEC. 22)
HEEL LOCATION: 75' FNL, 270' FEL (SEC. 27)
BOTTOM HOLE LOCATION: 75' FSL, 258' FEL (SEC. 3)

- NOTES:**
1. ▲ INDICATES SECTION CORNER.
 2. ● INDICATES CALCULATED CORNER.
 3. BASIS OF BEARINGS DERIVED FROM COLORADO COORDINATE SYSTEM OF 1983, NORTH ZONE.
 4. ALL MEASURED DISTANCES ARE GRID.
 5. COMBINED SCALE FACTOR: .99973347 CALCULATED FROM THE SE. CORNER OF SECTION 27, T3N, R63W.
 6. WELL FOOTAGES ARE MEASURED AT RIGHT ANGLES TO THE SECTION LINES.

WELL PAD - EAST STREET 14-22HZ

**DIRECTIONAL WELL PLAT (COGCC) /
MULTI-WELL PLAN (OGED)**
EAST STREET 22-1HZ, EAST STREET 22-2HZ,
EAST STREET 22-3HZ, EAST STREET 22-4HZ,
EAST STREET 22-5HZ, EAST STREET 22-6HZ,
EAST STREET 22-7HZ, EAST STREET 22-8HZ,
EAST STREET 22-9HZ & EAST STREET 22-10HZ
LOCATED IN SECTIONS 22, 27 & 34, T3N, R63W &
SECTION 3, T2N, R63W, 6TH P.M.
WELD COUNTY, COLORADO

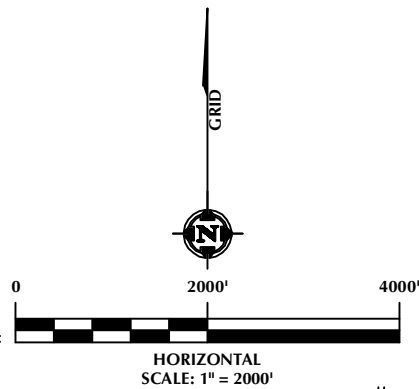
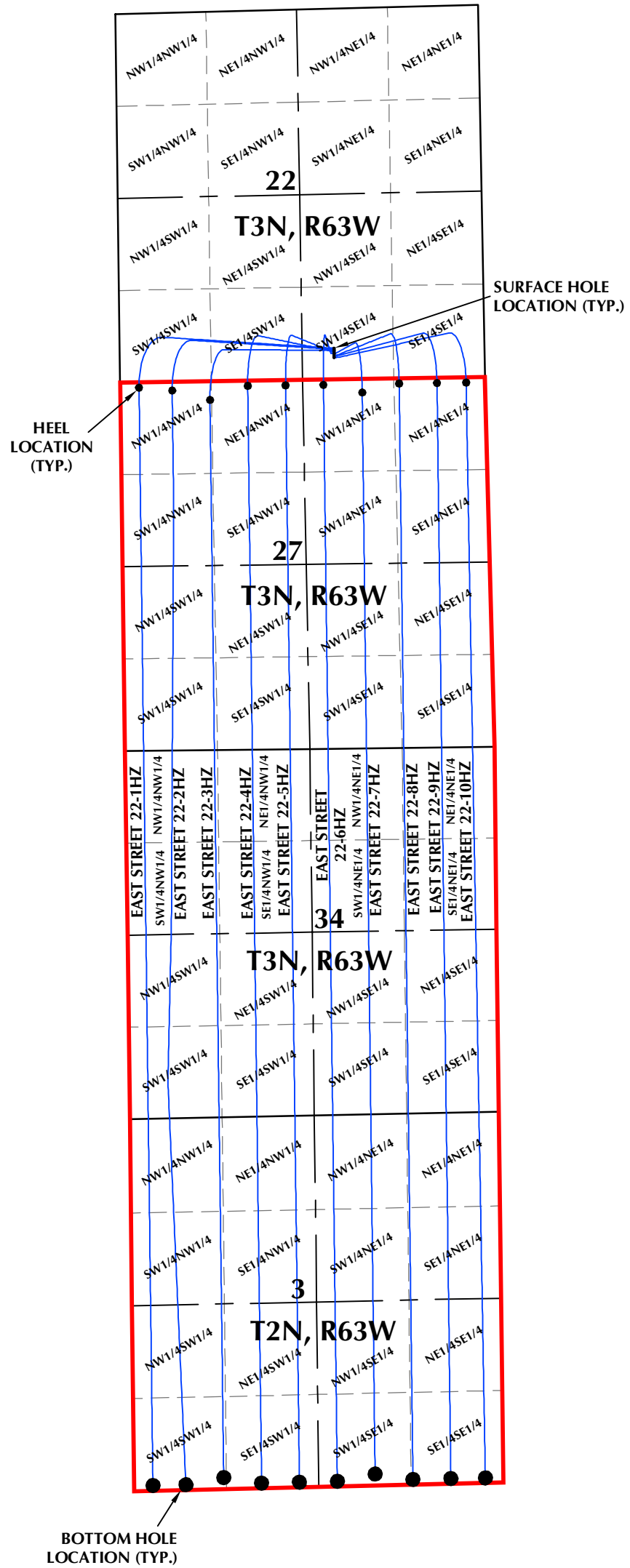
**Kerr-McGee Oil &
Gas Onshore LP**
1099 18th Street
Denver, Colorado 80202



CONSULTING, LLC
SHERIDAN OFFICE: 1095 Saberton Avenue, Sheridan, Wyoming 82801, Phone 307-674-0609
LOVELAND OFFICE: 6706 North Franklin Avenue, Loveland, Colorado 80538, Phone 970-776-4331

DRAFTED BY: SJM	CHECKED BY: RKF	SHEET NO: 1A
DATE DRAFTED: 3/21/23	DATE SURVEYED: 2/14/23	1A 1A OF 1
REVISED:	FILE NAME: 17-197	

DIRECTIONAL WELL PLAT (COGCC) / MULTI-WELL PLAN (OGED) SECTIONS 22, 27 & 34, T3N, R63W & SECTION 3, T2N, R63W, 6TH P.M.



- LEGEND:**
- DSU BOUNDARY
 - WELLBORE TRAJECTORY
 - HEEL LOCATION
 - BOTTOM HOLE LOCATION

WELL PAD - EAST STREET 14-22HZ

**DIRECTIONAL WELL PLAT (COGCC) /
MULTI-WELL PLAN (OGED)**
EAST STREET 22-1HZ, EAST STREET 22-2HZ,
EAST STREET 22-3HZ, EAST STREET 22-4HZ,
EAST STREET 22-5HZ, EAST STREET 22-6HZ,
EAST STREET 22-7HZ, EAST STREET 22-8HZ,
EAST STREET 22-9HZ & EAST STREET 22-10HZ
LOCATED IN SECTIONS 22, 27 & 34, T3N, R63W &
SECTION 3, T2N, R63W, 6TH P.M.
WELD COUNTY, COLORADO

**Kerr-McGee Oil &
Gas Onshore LP**
1099 18th Street
Denver, Colorado 80202



CONSULTING, LLC
SHERIDAN OFFICE LOVELAND OFFICE
1095 Saberton Avenue 6706 North Franklin Avenue
Sheridan, Wyoming 82801 Loveland, Colorado 80538
Phone 307-674-0609 Phone 970-776-4331

DRAFTED BY: SJM	CHECKED BY: RKF	SHEET NO: 1B
DATE DRAFTED: 3/21/23	DATE SURVEYED: 2/14/23	1B 1B OF 1
REVISED:	FILE NAME: 17-197	