



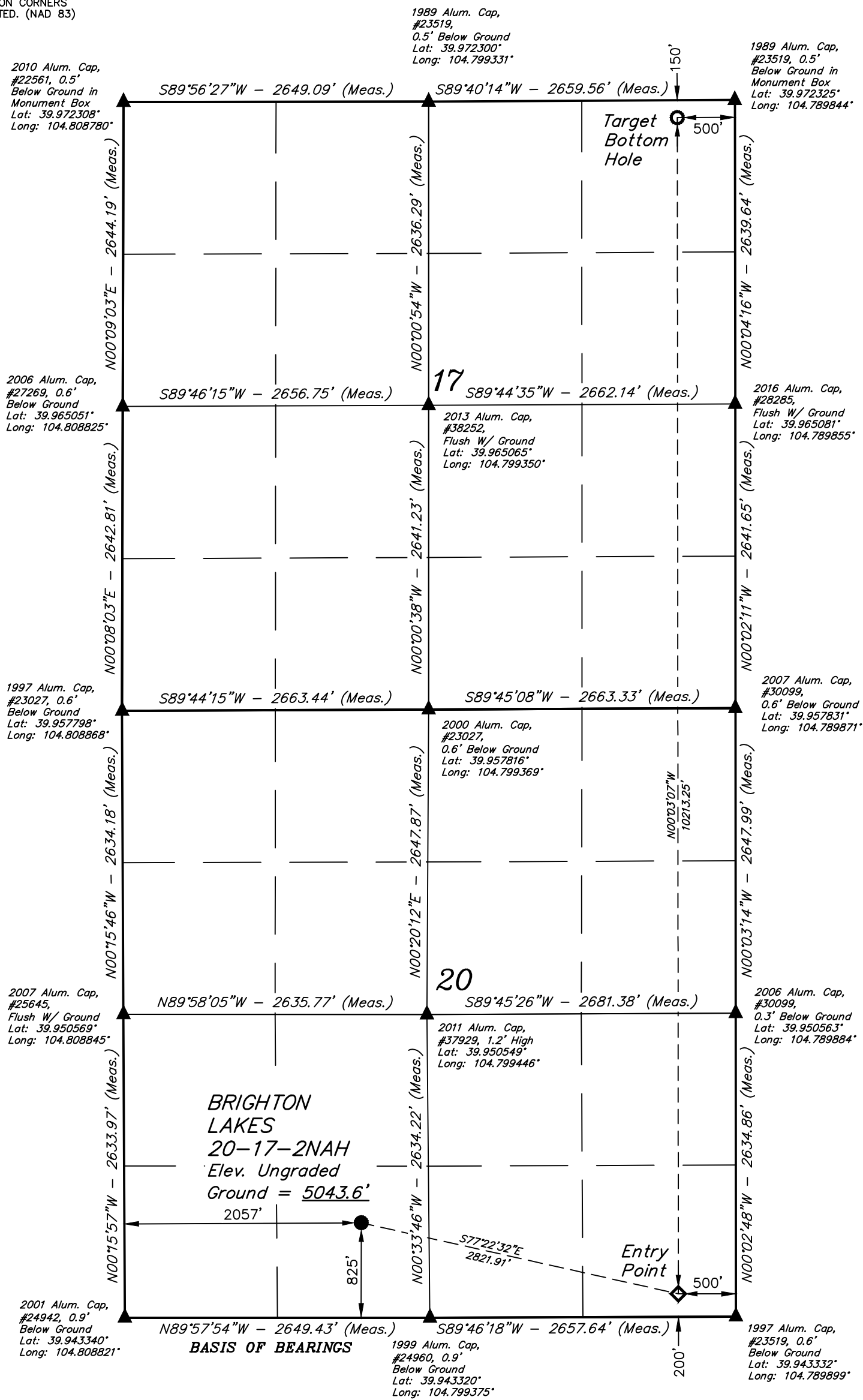


T1S, R66W, 6th P.M.

-  = SURFACE LOCATION.
 = ENTRY POINT.
 = TARGET BOTTOM HOLE.
 = SECTION CORNERS
 LOCATED. (NAD 83)

NOTE:
Distances referenced
on plat to section lines
are perpendicular.



CERTIFICATE
THE ABOVE SEAT WAS PREPARED FROM FIEL
YS MADE BY ME OR UNDER MY SUPERVISOR
TRUE AND CORRECT TO THE BEST OF MY

REGISTERED LAND SURVEYOR
REGISTRATION NO. 28285
STATE OF COLORADO
07-18-23



NAD 83 (SURFACE HOLE LOCATION)	NAD 83 (ENTRY POINT)	NAD 83 (TARGET BOTTOM HOLE)
LATITUDE = 39°56'44.12" (39.945589°)	LATITUDE = 39°56'37.96" (39.943879°)	LATITUDE = 39°58'18.87" (39.971909°)
LONGITUDE = 104°48'05.38" (104.801494°)	LONGITUDE = 104°47'30.05" (104.791680°)	LONGITUDE = 104°47'29.86" (104.791628°)

BASIS OF ELEVATION
OPUS SOLUTION GENERATED NAVD 88



POCO OPERATING
BRIGHTON LAKES 20-17-2NAH
SE 1/4 SW 1/4, SECTION 20, T1S, R66W, 6th P.M.
ADAMS COUNTY, COLORADO

SURVEYED BY	ORION RICE	02-24-22	SCALE
DRAWN BY	K.C.	07-18-23	1" = 1000'

WELL LOCATION PLAT



UELS, LLC
Corporate Office * 85 South 200 East
Vernal, UT 84078 * (435) 789-1017