

| | | | |
|------------------------|------------------------|----------------------------|-------------------------------------|
| Company | DELSCO | Country | USA |
| Well | BARR #2 | | |
| Field | RES MESA | | |
| County | LA PLATA | | |
| State | COLORADO | Country | USA |
| Location: | 990' FSL & 1650' FWL | | Other Services MAC-40 SQUEEZE |
| Permanent Datum | SEC 14 TWP 33N RGE 12W | API # : 05-067-05392 | Elevation |
| Log Measured From | GROUND LEVEL | Elevation | 6670' |
| Drilling Measured From | GROUND LEVEL | K.B. D.F. G.L. 6670' | |

| | |
|------------------------|----------------|
| Date | 2-4-2023 |
| Run Number | ONE |
| Depth Driller | 1117' |
| Depth Logger | 1030' |
| Bottom Logged Interval | 1030' |
| Top Log Interval | SURFACE |
| Open Hole Size | 6.25" |
| Type Fluid | WATER |
| Density / Viscosity | 8.3 |
| Max. Recorded Temp. | N/A |
| Estimated Cement Top | SEE LOG |
| Time Well Ready | 14:00 |
| Time Logger on Bottom | 14:30 |
| Equipment Number | 8029 |
| Location | FARMINGTON, NM |
| Recorded By | W. RICHARDSON |
| Witnessed By | G.CARTER |

| Run Number | Borehole Record | | Tubing Record | | | | |
|-------------------|-----------------|--------|---------------|------|--------|----------------|-----------------|
| | Bit | From | To | Size | Weight | From | To |
| Casing Record | | | | | | | |
| Surface String | | 7" | | | | Top SURFACE | Bottom 1117' |
| Prot. String | | | | | | | |
| Production String | | 4 1/2" | | | | SURFACE | 940' |
| Liner | | | | | | | |

<<< Fold Here >>>

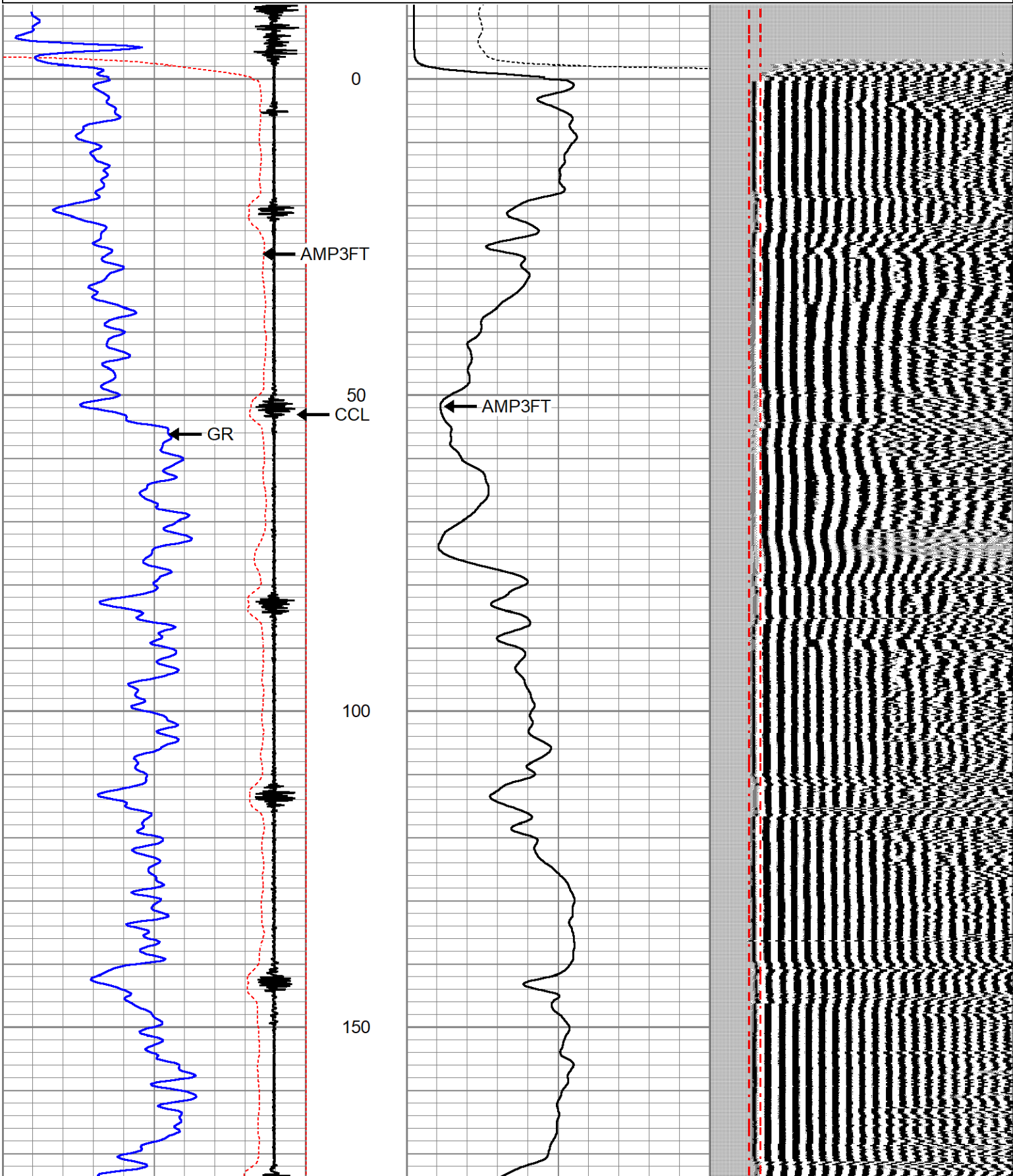
All interpretations are opinions based on inferences from electrical or other measurements and we cannot and do not guarantee the accuracy or correctness of any interpretation, and we shall not, except in the case of gross or willful negligence on our part, be liable or responsible for any loss, costs, damages, or expenses incurred or sustained by anyone resulting from any interpretation made by any of our officers, agents or employees. These interpretations are also subject to our general terms and conditions set out in our current Price Schedule.

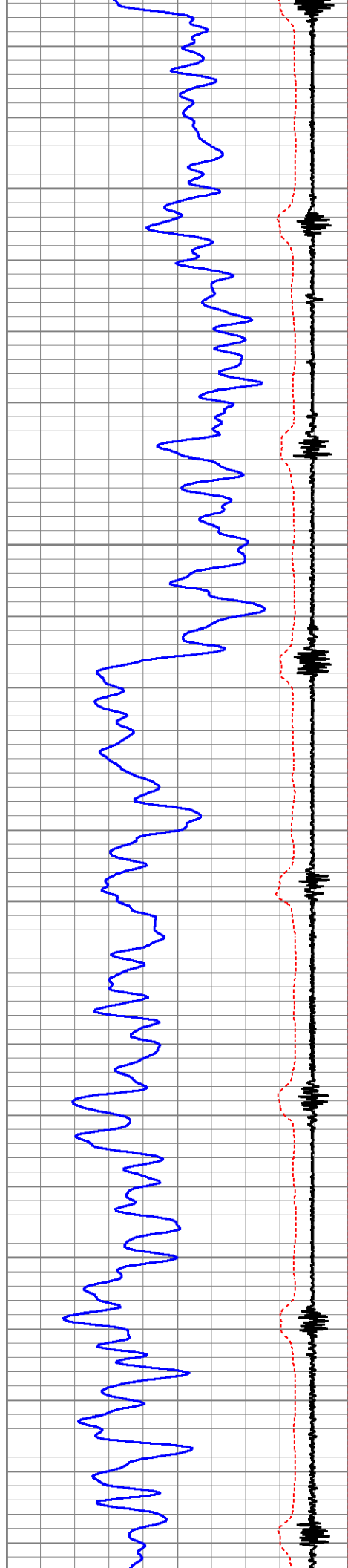
Comments

THANK YOU FOR USING THE WIRELINE GROUP!
WELL LOGGED WITH 0 PSI ON THE WELL

Database File delSCO_barr_2_2-4-23.db
 Dataset Pathname pass6.6
 Presentation Format farm3x5cbl
 Dataset Creation Sat Feb 04 14:58:09 2023
 Charted by Depth in Feet scaled 1:240

| | | | | | | | | | | |
|-----|--------------------|-----|------|---------|----------------|------------------------|-----|-------------------------|------|--|
| 390 | Travel Time (usec) | 190 | LTEN | 0 | Amplitude (mV) | 100 | 200 | Variable Density (usec) | 1200 | |
| -20 | Collar Locator | 1 | 0 | (lb2500 | 0 | Amplitude 3ft x 5 (mV) | 10 | Free Pipe Gate | | |
| 0 | GR (GAPI) | 200 | | | | | | | | |



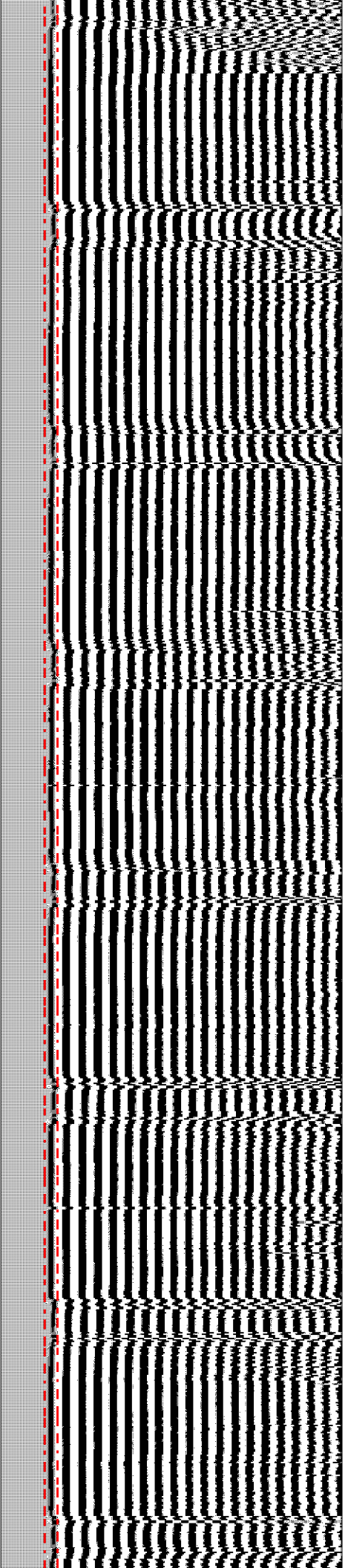
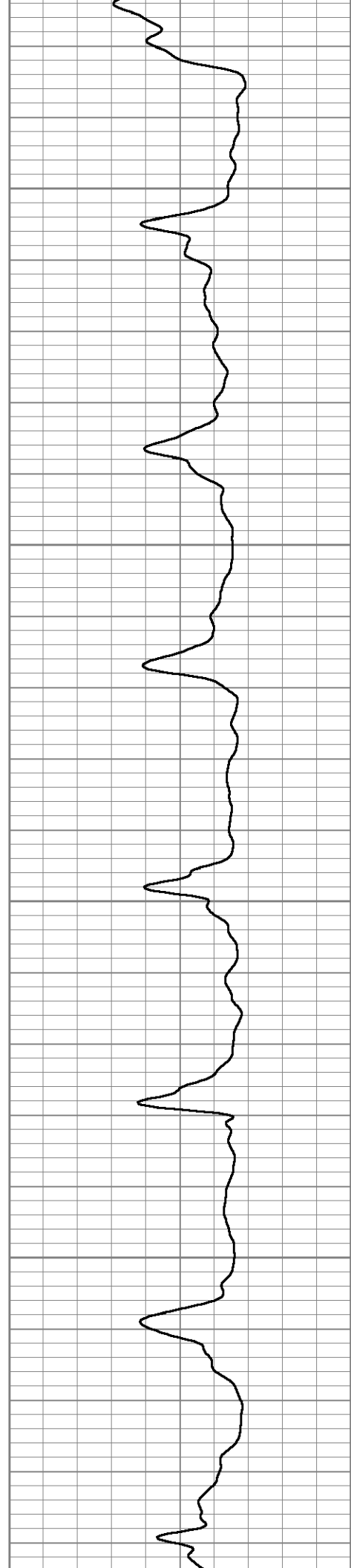


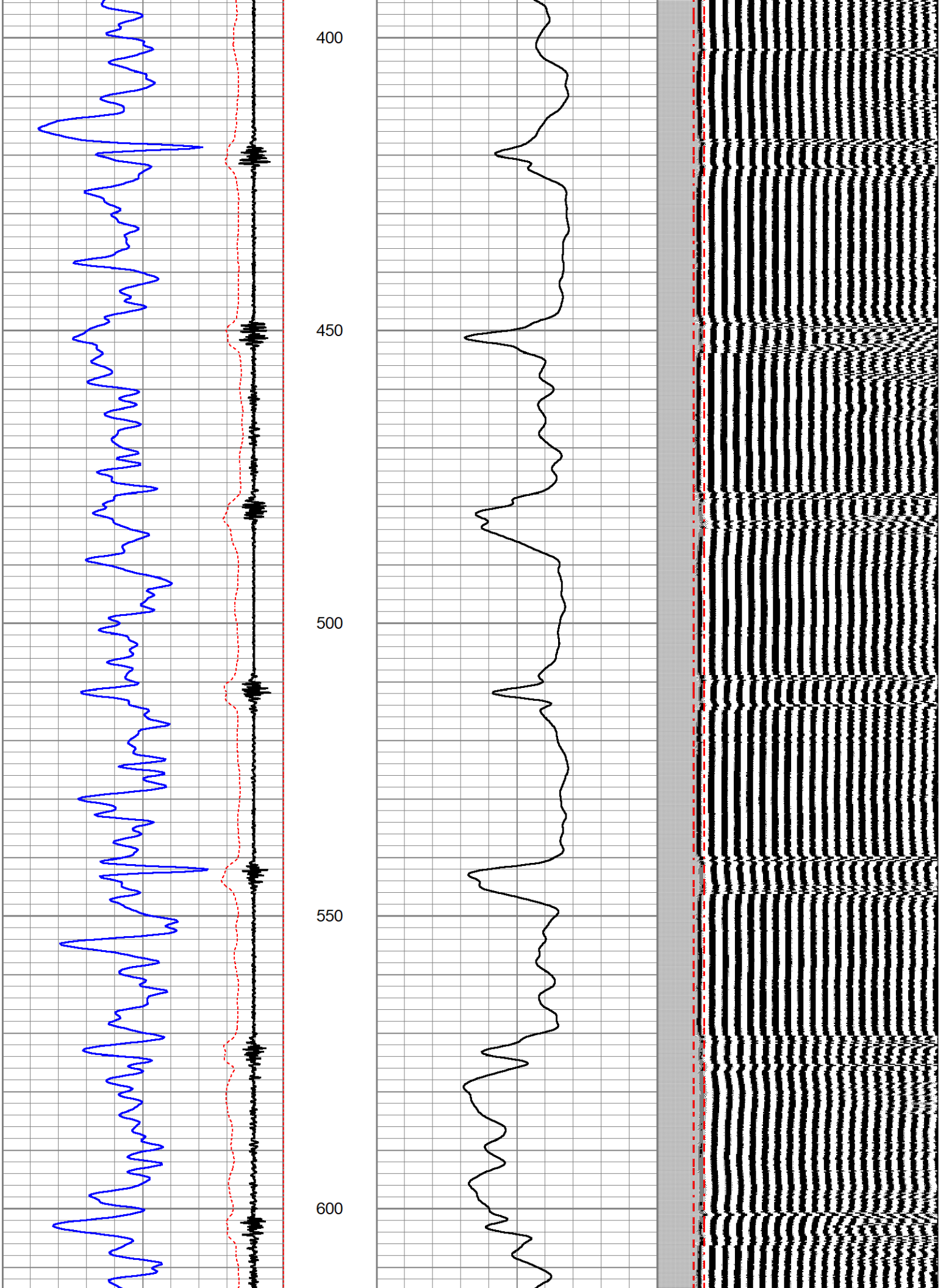
200

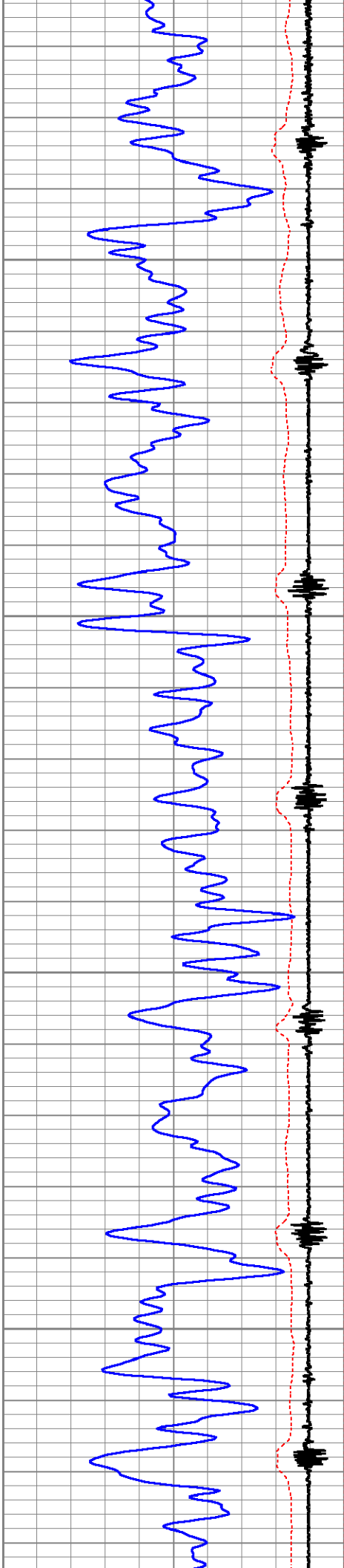
250

300

350





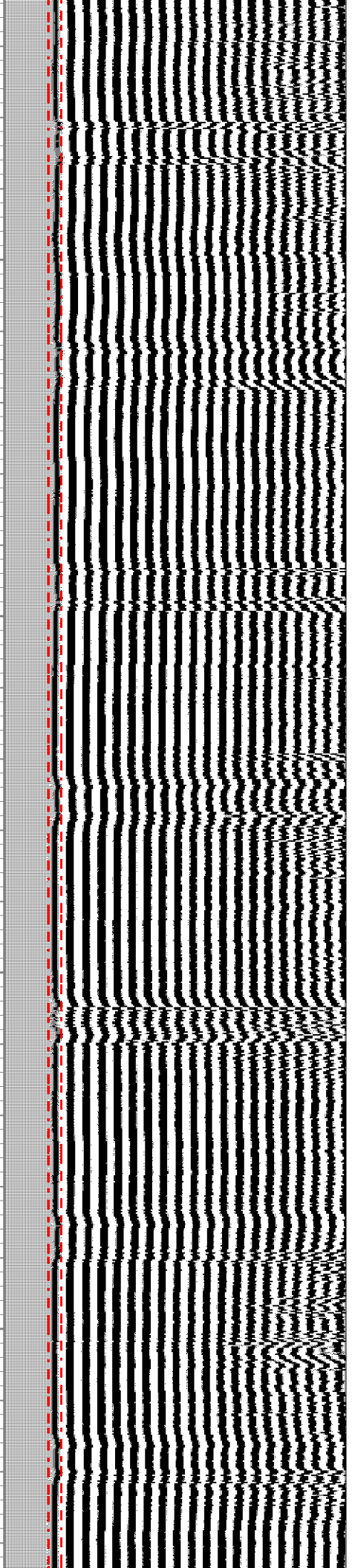
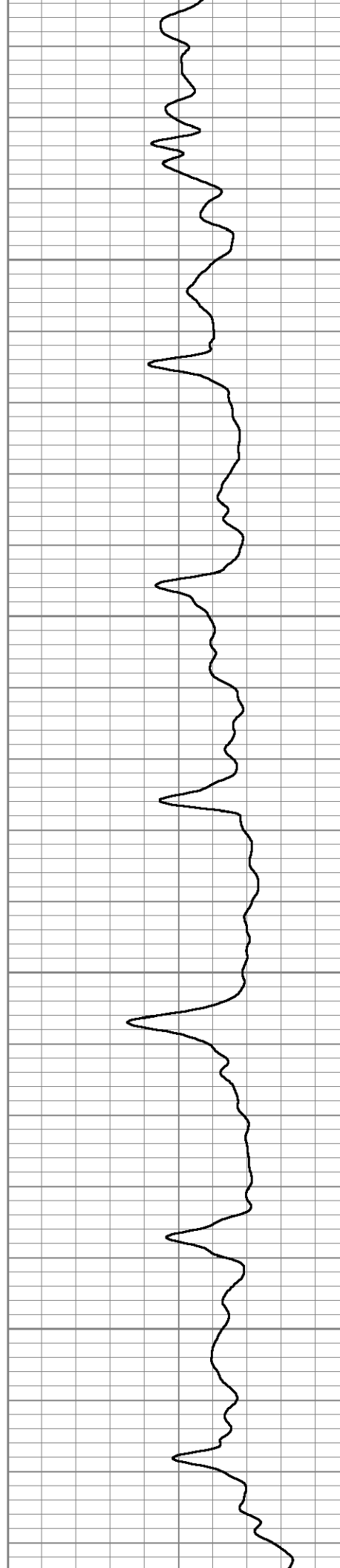


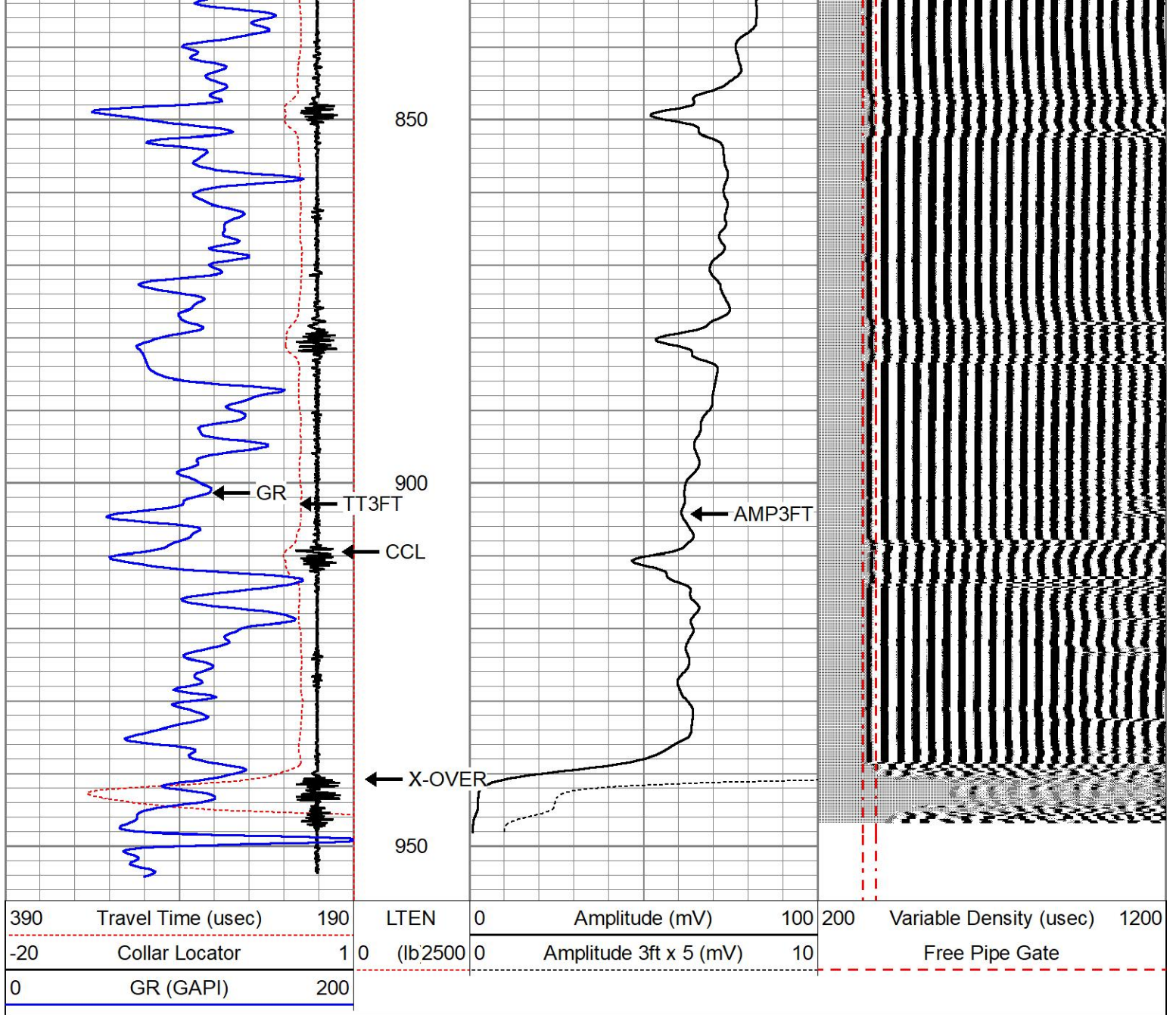
650

700

750

800

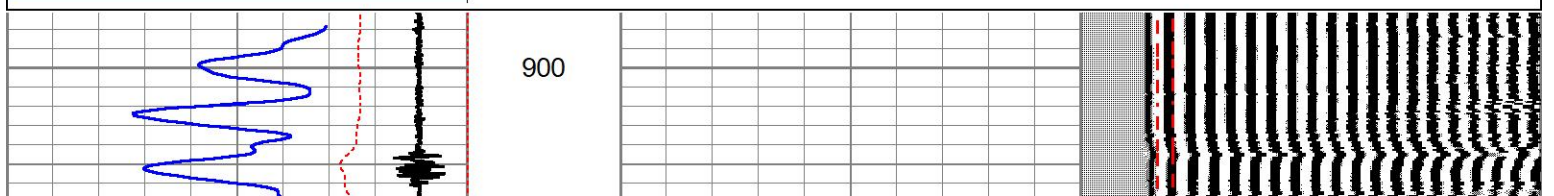


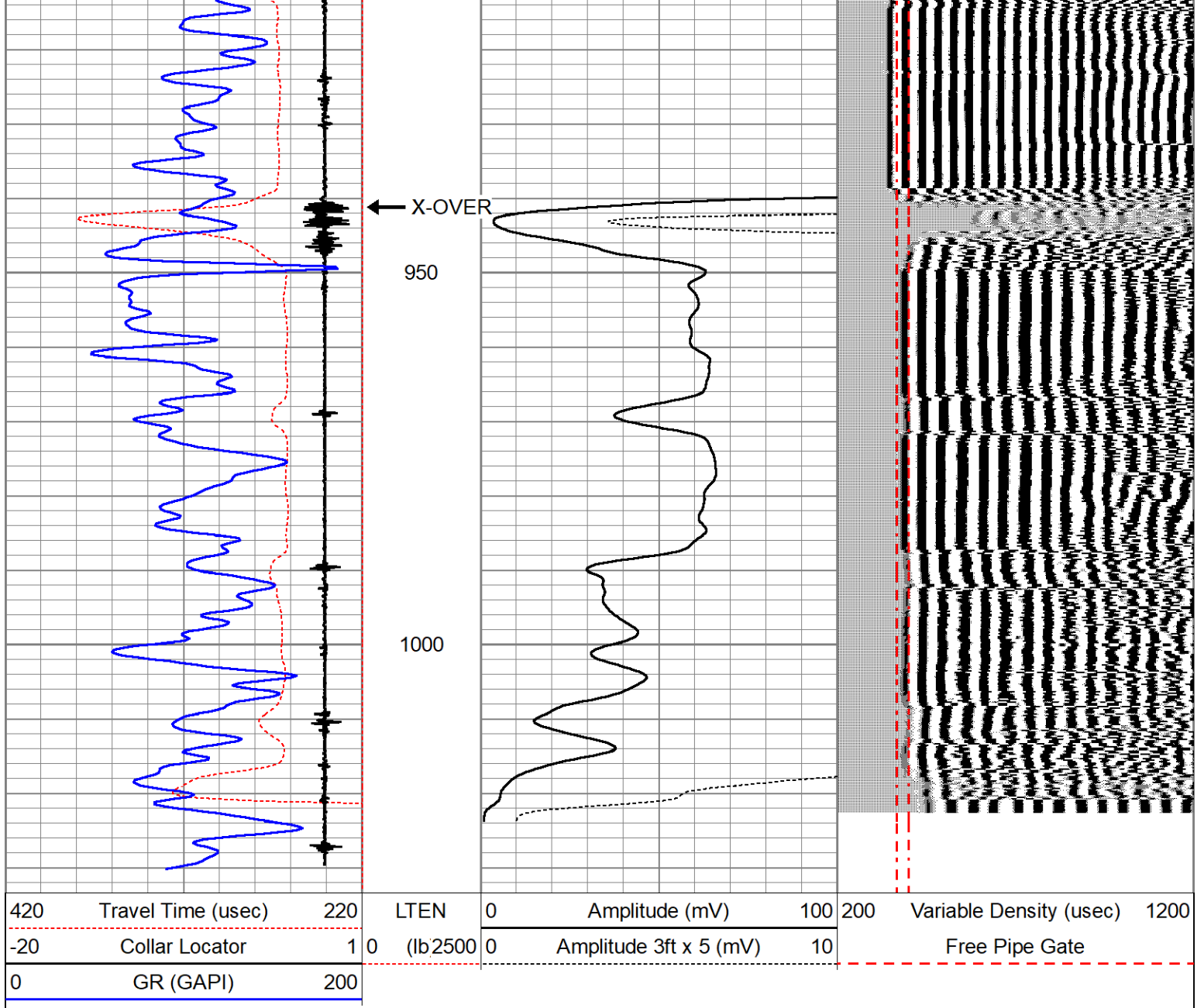


7" CASING

Database File: delSCO_barr_2_2-4-23.db
 Dataset Pathname: pass6.2
 Presentation Format: farm3x5cbl
 Dataset Creation: Sat Feb 04 14:31:07 2023
 Charted by: Depth in Feet scaled 1:240

| | | | | | | | | | | |
|-----|--------------------|-----|------|---------|----------------|------------------------|-----|-------------------------|------|--|
| 420 | Travel Time (usec) | 220 | LTEN | 0 | Amplitude (mV) | 100 | 200 | Variable Density (usec) | 1200 | |
| -20 | Collar Locator | 1 | 0 | (lb2500 | 0 | Amplitude 3ft x 5 (mV) | 10 | Free Pipe Gate | | |
| 0 | GR (GAPI) | 200 | | | | | | | | |





Calibration Report

Database File delsco_barr_2_2-4-23.db
 Dataset Pathname pass6.6
 Dataset Creation Sat Feb 04 14:58:09 2023

Gamma Ray Calibration Report

Serial Number: 275_070818
 Tool Model: Probe275
 Performed: (Not Performed)

Calibrator Value: 1.0 GAPI

Background Reading: 0.0 cps
 Calibrator Reading: 1.0 cps

Sensitivity: 1.0000 GAPI/cps

Segmented Cement Bond Log Calibration Report

Serial Number: ProbeDIG_001
 Tool Model: Digital

Calibration Casing Diameter: 7.000 in

Master Calibration, performed Sat Feb 4 14:28:38 2023:

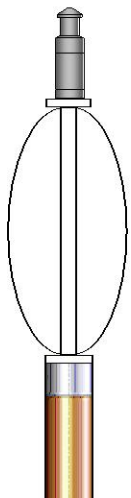
| | Raw (v) | | Calibrated (mv) | | Results | |
|-----|---------|-------|-----------------|--------|---------|--------|
| | Zero | Cal | Zero | Cal | Gain | Offset |
| 3' | 0.000 | 0.828 | 1.000 | 62.165 | 67.877 | 1.000 |
| CAL | | | | | | |
| 5' | 0.000 | 0.918 | 1.000 | 62.165 | 66.598 | 1.000 |
| SUM | | | | | | |
| S1 | | | | | | |
| S2 | | | | | | |
| S3 | | | | | | |
| S4 | | | | | | |
| S5 | | | | | | |
| S6 | | | | | | |
| S7 | | | | | | |
| S8 | | | | | | |

Internal Reference Calibration, performed (Not Performed):

| | Raw (v) | | Calibrated (v) | | Results | |
|-----|---------|-----|----------------|-----|---------|--------|
| | Zero | Cal | Zero | Cal | Gain | Offset |
| CAL | | | | | | |

Air Zero Calibration, performed Mon Jan 30 09:53:46 2023:

| | Raw (v) | | Calibrated (v) | | Results | |
|-----|---------|--|----------------|--|---------|--|
| | Zero | | Zero | | Offset | |
| 3' | 0.000 | | 0.000 | | 0.000 | |
| 5' | 0.000 | | 0.000 | | 0.000 | |
| SUM | | | | | | |
| S1 | | | | | | |
| S2 | | | | | | |
| S3 | | | | | | |
| S4 | | | | | | |
| S5 | | | | | | |
| S6 | | | | | | |
| S7 | | | | | | |
| S8 | | | | | | |

| Sensor | Offset (ft) | Schematic | Description | Length (ft) | O.D. (in) | Weight (lb) |
|--------|-------------|---|---------------------------------------|-------------|-----------|-------------|
| | |  | CHD-1.6875CHD 1 11/16" Cable Head | 1.00 | 1.69 | 10.00 |
| | | | CENT-Probe Probe 2 3/4 Centralizer | 2.88 | 2.75 | 20.00 |

| | | | | | | |
|---------|-------|---------------|--|------|------|--------|
| WVF3FT | 11.71 | | PRBDIGCBL-Digital (ProbeDIG_001) Probe 3' and 5' with Digital Telemetry | 9.17 | 2.75 | 100.00 |
| WVF5FT | 10.71 | | | | | |
| WVFSYNC | 7.46 | | | | | |
| CCL | 3.63 | | CENT-Probe Probe 2 3/4 Centralizer | 2.88 | 2.75 | 20.00 |
| GR | 0.83 | | GR-Probe275 (275_070818) Probe Gamma Ray CCL Analog Bottom Det. | 4.58 | 2.75 | 57.00 |
| | | Dataset: | delsco_barr_2_2-4-23.db: field/well/run1/pass6.6 | | | |
| | | Total length: | 20.50 ft | | | |
| | | Total weight: | 207.00 lb | | | |
| | | O.D.: | 2.75 in | | | |

| | | | |
|---------|----------|---------------------------------------|----------|
| Company | DELSCO | State | COLORADO |
| Well | BARR #2 | | |
| Field | RES MESA | | |
| County | LA PLATA | | |
| | | CEMENT BOND GAMMA RAY / CCL LOG | |