



R91W

GLO CALL = S89°57'E, 5429.16'

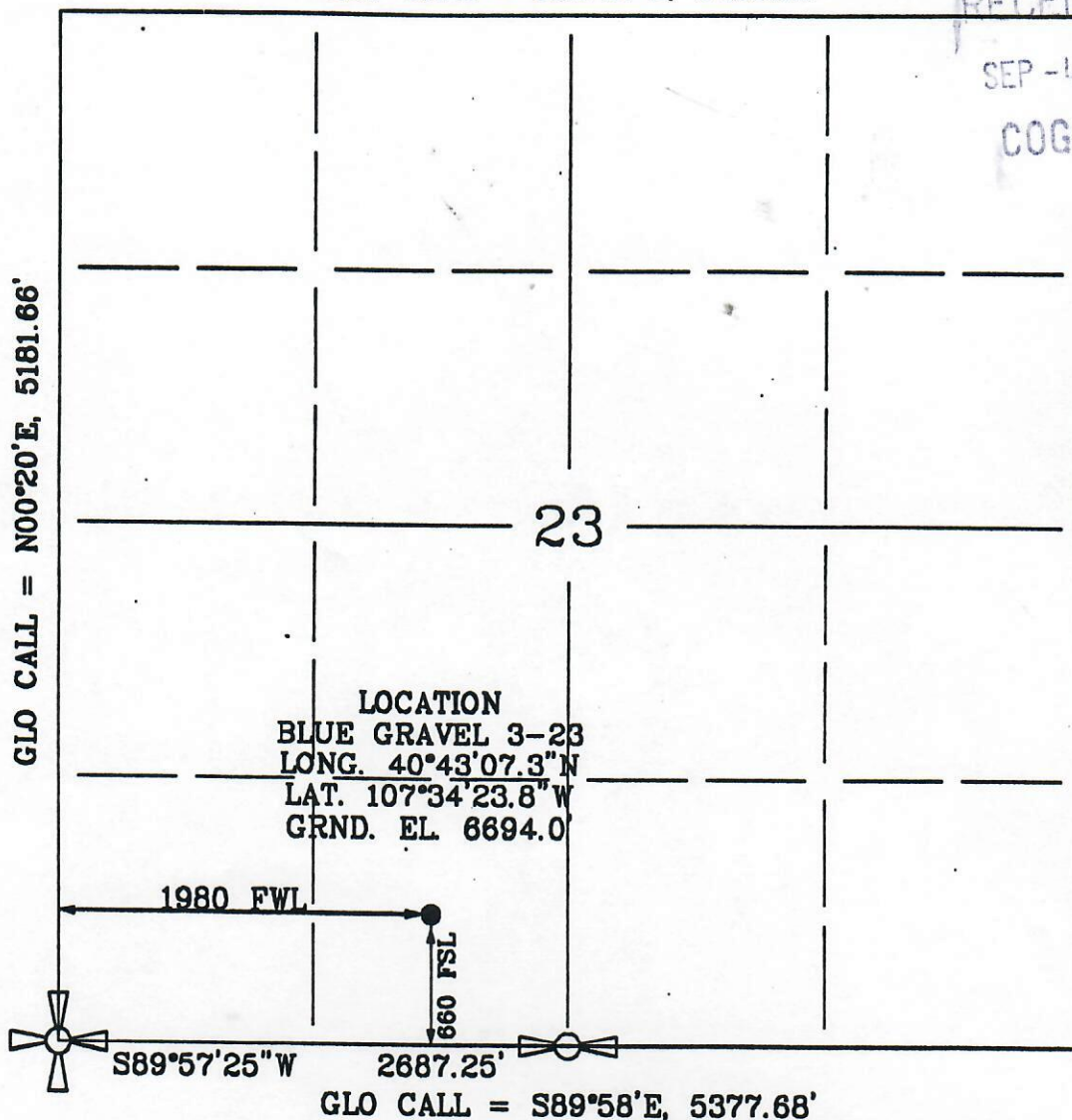
RECEIVED  
SEP -4 01  
COGCC



T9N

GLO CALL = N00°20'E, 5181.66'

GLO CALL = N00°53'E, 5187.60'



**SURVEYORS STATEMENT**

I, Martin A. Pedersen, of Rawlins, Wyo., hereby state that this map was made from notes taken on a survey made under my supervision on March 18, 2000 and that it correctly represents the well location Blue Gravel 3-23 as staked in the field.



**WELL LOCATION**

BLUE GRAVEL 3-23

FOR

CLX ENERGY

518 17th Street, Suite 745

Denver Colorado, 80202

IN

SE1/4SW1/4, SECTION 23

T-9-N, R-91-W

MOFFAT COUNTY, COLORADO

Elevations are referred to the Southwest Corner of Section 23, T-9-N, R-91-W @ 6749', NAD 27