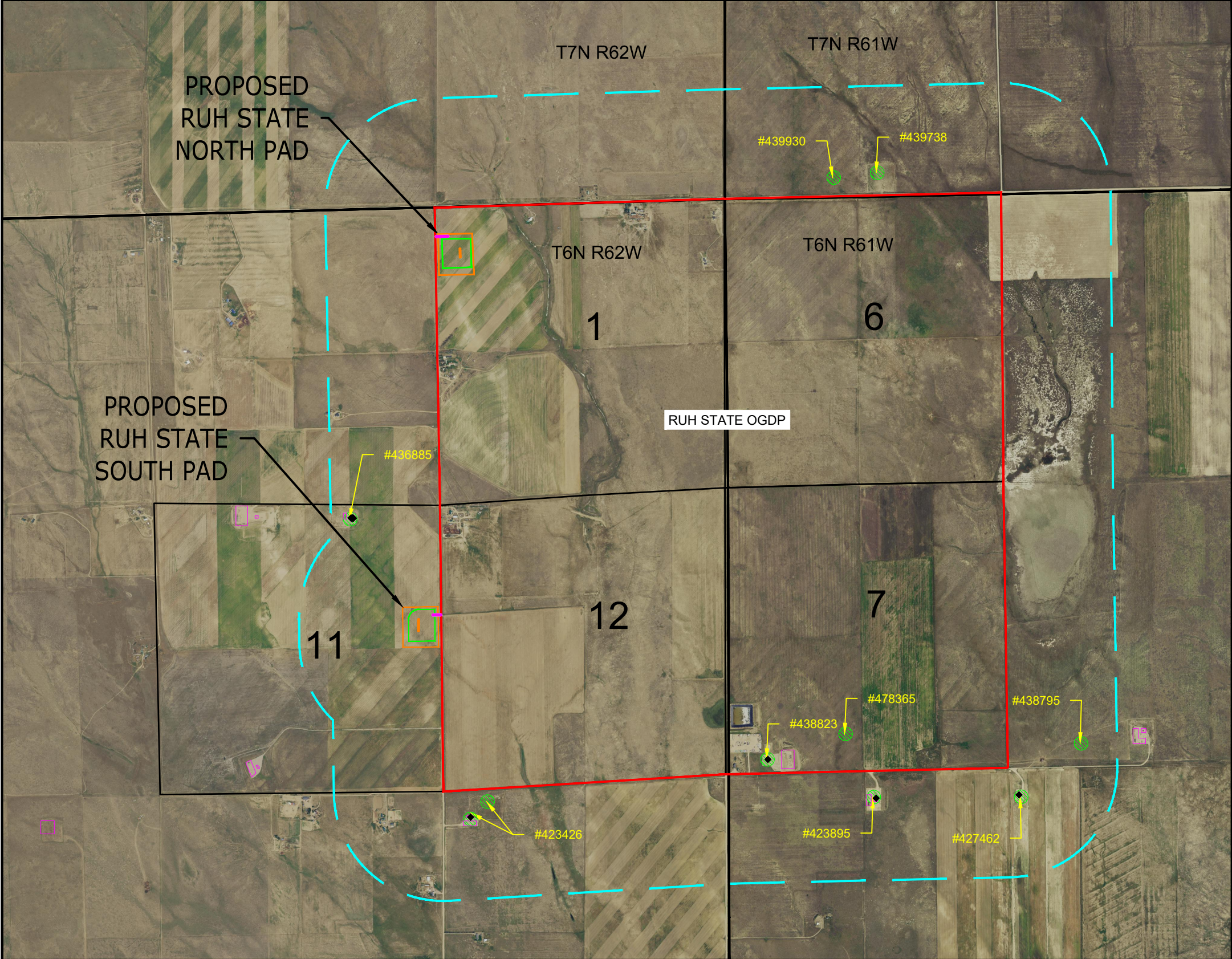
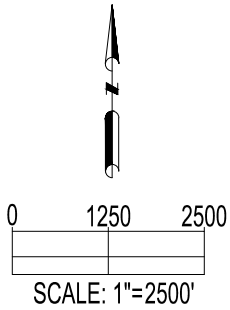


RUH STATE OGD
RELATED LOCATION & FLOWLINE MAP



NOTE:
1. NO OFFSITE FLOWLINES ARE PLANNED AS PART OF THIS OGD.



DATA SOURCE:
AERIAL IMAGERY: NAIP 2021
WELLS/APPROVED LOCATIONS: ECMC

PUBLICLY AVAILABLE DATA SOURCES HAVE NOT BEEN INDEPENDENTLY VERIFIED BY ASCENT.

DISCLAIMER:
THIS PLOT DOES NOT REPRESENT A MONUMENTED LAND SURVEY AND SHOULD NOT BE RELIED UPON TO DETERMINE BOUNDARY LINES, PROPERTY OWNERSHIP OR OTHER PROPERTY INTERESTS. PARCEL LINES, IF DEPICTED HAVE NOT BEEN FIELD VERIFIED AND MAY BE BASED UPON PUBLICLY AVAILABLE DATA THAT ALSO HAS NOT BEEN INDEPENDENTLY VERIFIED.

 8620 Wolff Court Westminster, CO 80031 (303) 928-7128 www.ascentgeomatics.com	FIELD DATE: 09-14-22	DRAWING DATE: 10-04-23	SITE NAME: RUH STATE OGD	LEGEND: ● = PROPOSED WELL ◆ = EXISTING WELL --- = PROPOSED ACCESS ROAD --- = SECTION LINE --- = TOWNSHIP LINE --- = 2000' RADIUS FROM DSU --- = EXISTING FACILITY --- = PERMITTED ECMC LOCATION --- = DSU BOUNDARY --- = WORKING PAD SURFACE --- = OIL & GAS LOCATION	PREPARED FOR:
	DRAWN BY: CSG	CHECKED BY: HJL	SURFACE LOCATION: SEC. 1 & 11, T6N, R62W, 6TH P.M. WELD COUNTY, COLORADO		

RUH STATE OGD
RELATED LOCATION & FLOWLINE MAP

Location ID	Location Name	Location Status	Operator
439930	Bobcat /O-31 MLVT Pad	AC	BONANZA CREEK ENERGY OPERATING COMPANY LLC
439738	Bobcat /O-31 Pad	AC	BONANZA CREEK ENERGY OPERATING COMPANY LLC
438795	Jencks Farms /6-61-8_5 SWSW	AC	HIGHPOINT OPERATING CORPORATION
427462	Greasewood /6-61-17	AC	HIGHPOINT OPERATING CORPORATION
423895	Greasewood /08-18H	AC	HIGHPOINT OPERATING CORPORATION
478365	CB Rudd /6-61-7 SESW	AC	HIGHPOINT OPERATING CORPORATION
438823	CB Rudd /6-61-18_19 SW7	AC	HIGHPOINT OPERATING CORPORATION
423426	Bolin /6-62-13_24 NWNW	AC	HIGHPOINT OPERATING CORPORATION
436885	Ruh /6-62-11_14 NWNE	AC	HIGHPOINT OPERATING CORPORATION