



RULE 304.e. SUBSTANTIALLY EQUIVALENT INFORMATION COVER SHEET

Ruh State Oil and Gas Development Plan, Docket #

Ruh State South Pad: SENE Section 11, Township 6 North, Range 62 West

Form 2A Doc #403049953

Weld County, Colorado

The attached Site Safety and Emergency Action Plan is being submitted as a substantially equivalent document to the Emergency Response Plan required by COGCC Rule 424.a.

This document was developed for Weld County as part of the 1041WOGLA Application.

This document does not conform to COGCC rules or guidance in the following ways:

There are no Public Water System administrators applicable to be listed as a contact in Section 4.

This document should be accepted as substantially equivalent:

The Emergency Response Plan (submitted as pages 87-104 of the 1041 WOGLA Application) has been reviewed by both Briggsdale Fire Protection District and Weld County OEM. Briggsdale Fire Department is a combination department comprised of volunteers. HERV will participate in annual training coordination with response agencies.

SITE SAFETY AND EMERGENCY ACTION PLAN

HERV Oil, LLC



**HERV Oil, LLC
3839 McKinney Ave., Ste. 155-830
Dallas, Texas 75204**

**Ruh State South Pad
SENE Section 11, Township 6 North, Range 62 West**


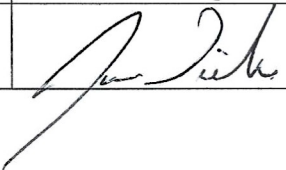
**Address: 34601 CR 83
WELD COUNTY, COLORADO**

Table of Contents


SECTION 1 – APPROVAL SIGNATURES	1
SECTION 2 – SITE ADDRESS AND DIRECTIONS	2
a) Directions:.....	2
b) Ingress and egress information:	2
c) Physical Address and GPS coordinates	2
d) Emergency Evacuation/Muster Assembly point(s)	2
SECTION 3 – LIST OF EMERGENCY CONTACTS.....	3
a) HERV Oil, LLC.....	3
b) HERV Oil, LLC Community/Media Relations	3
c) First Responders (Fire, EMS, HazMat)	3
d) Local, State, and Federal Contacts.....	3
e) Medical Facilities (<i>Nearest locations to site</i>)	3
f) Spill Response Organization (<i>Contracted</i>)	3
g) Loss of Well Control (<i>Contracted</i>).....	3
SECTION 4 – SITE SPECIFIC INFORMATION	5
a) Site Description.....	5
b) Nearby Schools, High Occupancy Buildings, Waterways.....	5
c) Site Safety Requirements and General Safety Information.....	5
d) SDS.....	5
e) Equipment List	5
f) Chemicals stored on-site	6
SECTION 5 – MAPS AND DRAWINGS	7
1,000' Buffer Area Map	7
Project Location Access Map and Muster Point.....	8
Haul Route Map.....	9
2500 Foot Buffer Area Map	10
SECTION 6 – SPILL RESPONSE AND CLEAN-UP.....	11
a) Spill Response	11
b) Spill Reporting.....	11
SECTION 7 – REPORTABLE QUANTITIES.....	13
a) Reportable Quantities	13
b) Reportable Requirements.....	13
SECTION 8 – EVACUATION INFORMATION.....	13
a) Evacuation Plan Procedures (public)	13
SECTION 9 – TRAINING AND EXERCISES	14
SECTION 10 – COORDINATION WITH FIRST RESPONDERS	14
SECTION 11 – Plan Review and Update Procedures.....	14

SECTION 1 – APPROVAL SIGNATURES

Instructions: Company Representative to sign with concurrence review by local Fire Department/Districts

HERV Oil, LLC			
Name	Signature	Title	Date
Bennett Neale		Manager	12/20/2022
Fire District			
Name	Signature	Title	Date
James Dilka		Fire Chief	3/8/23

Weld County Office of Emergency Management
Digitally Signed

David Burns		Digitally signed by David Burns Date: 2023.03.08 12:35:29 -07'00'
------------------------	---	--

SECTION 2 – SITE ADDRESS AND DIRECTIONS

a) Directions:

Ruh State South Pad: SENE Section 11, Township 6 North, Range 62 West From the intersection of CR 70 and CR 83 head North on CR 83 for 3,158 feet to a proposed access to the West. Thence West for 48 feet to the facility.

b) Ingress and egress information:

All traffic into and out of Ruh State South Pad will check-in and check-out with wellsite supervisor. All ingress and egress routes will be clearly identified and kept clear from parked/staged vehicles at all times.

c) Physical Address and GPS coordinates

- **Legal Description** – SENE of Section 11, Township 6 North, Range 62 West
- **Address** – 34601 CR 83
- **Town, CO, Zip** – *Unincorporated Weld County, Colorado*
- **Lat/Long:** Lat: 40.503048°N Long: -104.281345°W

d) Emergency Evacuation/Muster Assembly point(s)

For incidents where remaining in a particular area could pose a hazard to personnel onsite, such as a fire or hazardous material release, evacuation may be required to ensure the safety of onsite personnel. In the event of an emergency, site personnel will initially be evacuated to pre-designated muster assembly points.

- The Muster assembly points are identified on the Site Access and Muster Point exhibit in this plan.
- The Muster assembly points will be identified during all site safety briefings for visitors, employees, and contract personnel.

Sign-In Sheets: During drilling and completions activities all employees, contractors, and approved visitors to the **Ruh State South Pad at SENE Section 11, Township 6 North, Range 62 West** will be required to enter through the designated location entrance. Upon checking in, employees, contractors, and visitors will be provided a detailed safety briefing of current operations, all safety precautions that must be adhered to, and the site emergency evacuation plan. In addition, all personnel who enter the location must sign-out upon their departure. Supervisory personnel are required to account for all persons entering or leaving in the event of an incident. Once the drilling and completions phase is complete the site will transition to the production phase and no unauthorized personnel will be allowed on location without first contacting a company representative.

SECTION 3 – LIST OF EMERGENCY CONTACTS

a) HERV Oil, LLC

Name	Office Phone	Emergency/Cell
HERV Oil, LLC 3839 McKinney Ave. Ste. 155-830 Dallas, Texas 75204	405-883-7005	918-605-5128
HERV Oil, LLC EHS on-call Emergency Number	n/a	918-605-5128
Manager, Bennett Neale	405-883-7005, ext. 700	918-605-5128
EHS – Safety	405-883-7005, ext. 700	918-605-5128
EHS – Environmental	405-883-7005, ext. 700	918-605-5128

b) HERV Oil, LLC Community/Media Relations

Name	Office Phone	Cell Phone
Bennett Neale	405-883-7005, ext. 700	918-605-5128

c) First Responders (Fire, EMS, HazMat)

Name	Emergency Number	Non-Emergency Number
*All emergency notifications require notification to 911 first		
Briggsdale Fire Protection District – Station #2	911	970-656-3503
Weld County Sheriff	911	970-356-4015
Colorado State Highway Patrol	911	970-506-4999

d) Local, State, and Federal Contacts

Name	Emergency Number	Non-Emergency Number
Weld County Office of Emergency Management	911	970-304-6540
CDPHE	none	877-518-5608
Colorado Parks & Wildlife	none	303-291-7227
National Response Center	800-424-8802	none

e) Medical Facilities (Nearest locations to site)

Name	Office Phone
Northern Colorado Medical Center	970-352-4121
Medical Center of the Rockies	970-624-2500
Northern Colorado Medical Facility (Burn Unit)	970-810-4121

f) Spill Response Organization (Contracted)

Name	24/7 Emergency Number	Non-Emergency Number
2DOT Consulting – Mark Keyes	none	810-230-7180
Kinetic Energy Services	720-552-1221	none

g) Loss of Well Control (Contracted)

Name	24/7 Emergency Number	Non-Emergency Number
Wild Well Control, Inc.	281-784-4700	281-353-5481

h) Railroad Emergency Response (*if applicable*)

Name	24/7 Emergency Number
N/A	N/A

i) Mutual-Aid –

All mutual-aid coordination within Weld County will be in accordance with the current Weld County Fire Chiefs Association Mutual-Aid Agreement. In addition, due to the size of Weld County and the large number of Fire Departments that make up the Weld County Fire Chiefs Association's, Mutual-Aid may be a mixture of full-time, combination, and volunteer FD resources responding to an incident at **Ruh State South Pad at SENE Section 11, Township 6 North, Range 62 West.**

SECTION 4 – SITE SPECIFIC INFORMATION

a) Site Description

The Ruh State South Pad: SENE Section 11, Township 6 North, Range 62 West is a HERV Oil, LLC (“HERV”) oil and gas well pad and production facility that will have eight (8) horizontal oil wells along with six (6) 500-barrel crude oil storage tanks and one (1) 500 barrel produced water tank located inside a lined secondary containment structure.

As part of the Weld County 1041 WOGLA permit process, the following sections of County Code address site layout, site drawings, and identify any sensitive areas and discuss any mitigation measures needed.

- Sec. 21-5-312 – Comprehensive Development Plans (CDPs)
- Section 21-5-320 – Application requirements for 1041 WOGLA Permit

b) Nearby Schools, High Occupancy Buildings, Waterways

- Schools - None within 2500’ of location.
- High Occupancy Buildings - None within 2500’ of location.
- Waterways – seasonally flooded intermittent riverine wetland 2254’ Southeast.

c) Site Safety Requirements and General Safety Information

The minimum personal protective equipment (“PPE”) to enter any HERV production location includes hard hat, safety glasses, and safety toe boots. All contractors and visitors are responsible for providing their employees with the appropriate training on and use of PPE while on HERV locations. In addition, all contract personnel entering a HERV location to perform work must understand and abide by HERV’s contractor expectations relating to environmental, health, and safety requirements.

The primary hazards that any person must be aware of while on a HERV production location include, but are not limited to, the potential for release of hydrocarbon gases and/or liquids from production equipment/tanks, heavy truck and equipment traffic, loud noise, high pressures, and the potential for a flash fire. These hazards can vary depending on the work being performed.

d) SDS

Depending on the operations taking place on location, chemicals stored on-site may vary. In accordance with 49 CFR 1910.1200, Safety Data Sheets (“SDS”) will be made available for site personnel performing work and for first responders in a centralized location onsite.

e) Equipment List

Item Description	Quantity
Horizontal Oil and Gas Well	8
Vapor Recovery Unit	4
Compressor	1
Separator/Heater Treater	8
Oil Tank	6
Water Tank	1
Vapor Recovery Tower	2
Enclosed Combustion Device	2
Dehydrator Unit	1
LACT Unit	2
Instrument Air System	1
Pump	1

Automation Skid	1
Discharge Filter Separator	1
Sales Check Meter	1
Vent Knockout Drum	1
Scrubber	3

f) Chemicals stored on-site

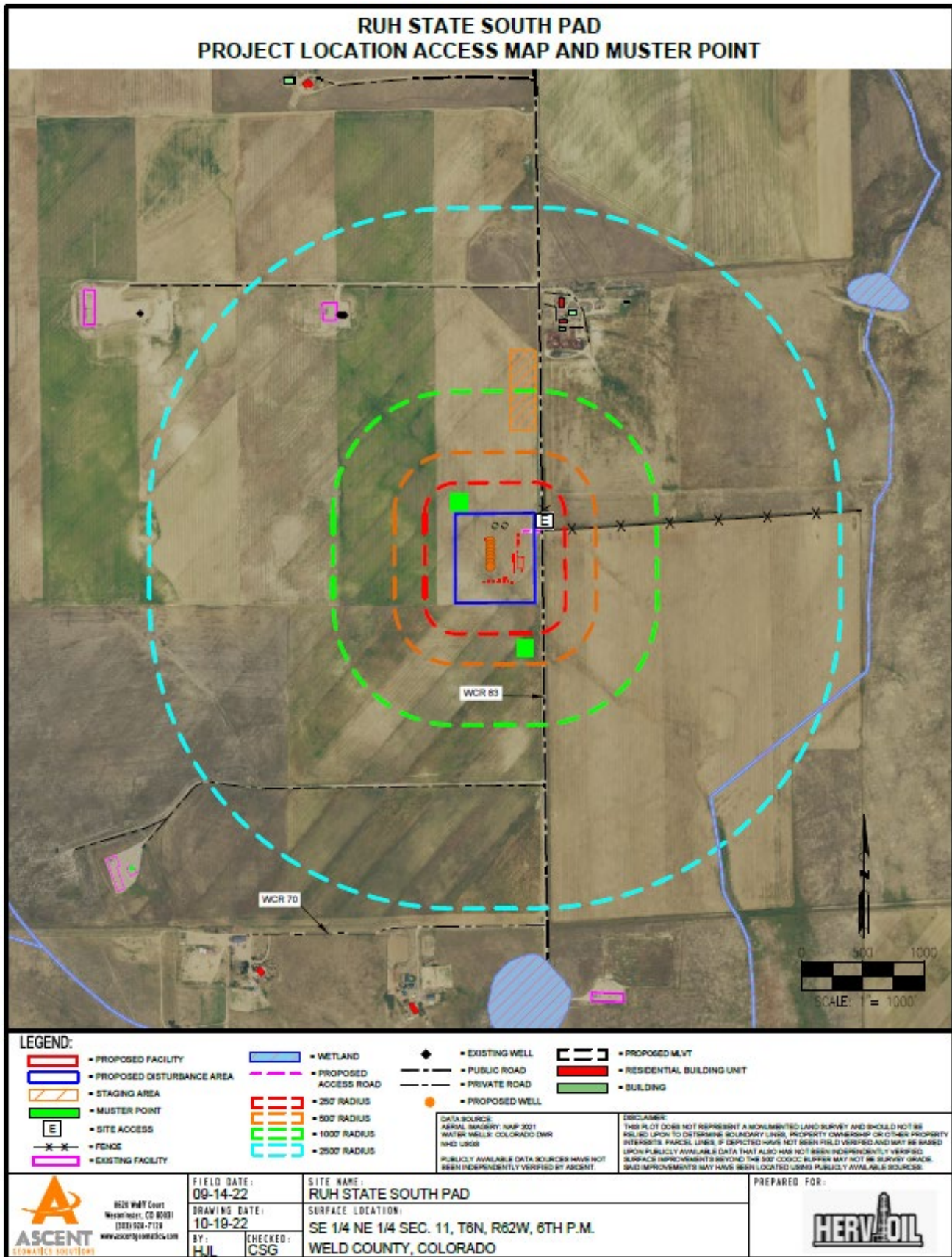
Operation	Chemical	Quantity	Location
Drilling	Adapta – 25 kg bag	100 sacks	Drill pad/rig
Drilling	Aquagel – 50 lb bag	200 sacks	Drill pad/rig
Drilling	BaraBlok – 50 lb bag	100 sacks	Drill pad/rig
Drilling	BaraH2O W-936 Flocculant – 25 kg bag	100 sacks	Drill pad/rig
Drilling	BaraKlean – 5 gal can	8 drums	Drill pad/rig
Drilling	Baroid 41 – 100 lb bag	400 sacks	Drill pad/rig
Drilling	Baroid 41 – Ton (ST)	45 tons	Drill pad/rig
Drilling	Baro-Seal Classic – 40 lb bag	100 sacks	Drill pad/rig
Drilling	Calc Chloride, OBM/DF, PWDR – 50 lb bag	50 sacks	Drill pad/rig
Drilling	Calcium Ammonium Nitrate – 50 lb bag	50 sacks	Drill pad/rig
Drilling	Driltreat – 55 gal drum	20 drums	Drill pad/rig
Drilling	Forti-Mul – 55 gal drum	20 drums	Drill pad/rig
Drilling	Graphite Ultra Fine – 50 lb bag	100 sacks	Drill pad/rig
Drilling	Gypsum – 50 lb bag	50 sacks	Drill pad/rig
Drilling	Lime – 50 lb bag	100 sacks	Drill pad/rig
Drilling	Rhemod L – 55 gal drum	20 drums	Drill pad/rig
Drilling	SAPP – 50 lb bag	50 sacks	Drill pad/rig
Drilling	SAPP Stick – 1 ea	80 each	Drill pad/rig
Drilling	Sawdust Fine – 5.5 cubic ft bag	80 sacks	Drill pad/rig
Drilling	Soda Ash – 50 lb bag	50 sacks	Drill pad/rig
Drilling	SS-82 Hard White Soap Stick – case	80 each	Drill pad/rig
Drilling	Stoppit – 50 lb bag	50 sacks	Drill pad/rig
Drilling	Therma-Thin – 5 gal can	32 cans	Drill pad/rig
Drilling	Wall-Nut Medium – 50 lb bag	100 sacks	Drill pad/rig
Various	Diesel	1,000 gal	Drill pad/rig
Completions	Hydrochloric Acid – HCL-28	6,000 gal	Frac pad/chem trailer
Completions	Biocide – Tolcide TP5	5,000 gal	Frac pad/chem trailer
Completions	Friction Reducer – FRP-15	7,000 gal	Frac pad/chem trailer
Completions	Clay Stability Additive – SCA-23A	6,000 gal	Frac pad/chem trailer
Completions	Surfactant	6,000 gal	Frac pad/chem trailer
Completions	Sodium Chlorite and Hypochlorite	4,000 gal	Frac pad/chem trailer
Completions – Coil Specific	Pipe on pipe lube	990 gal	Frac pad/chem trailer
Completions - Coil Specific	Gel – 10 gal	5 buckets	Frac pad/chem trailer
Completions - Coil Specific	Foamer – 10 gal	5 buckets	Frac pad/chem trailer
Production	Corrosion Inhibitor	300 bbls	Wellhead
Production	Emulsion Breaker	300 bbls	Wellhead
Production	Oil	3,000 bbls	Tank battery
Production	Water	500 bbls	Tank battery

SECTION 5 – MAPS AND DRAWINGS

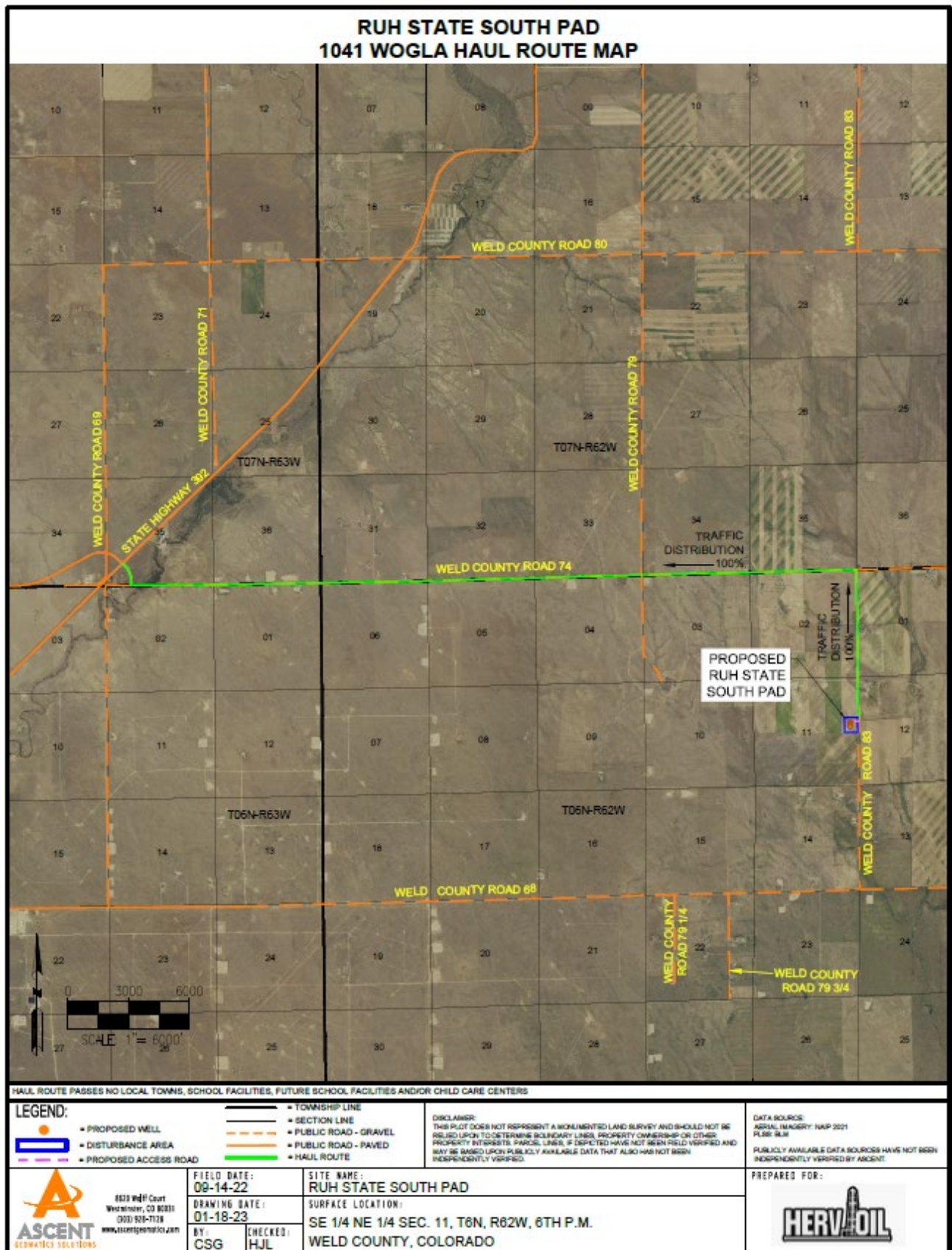
1,000' Buffer Area Map



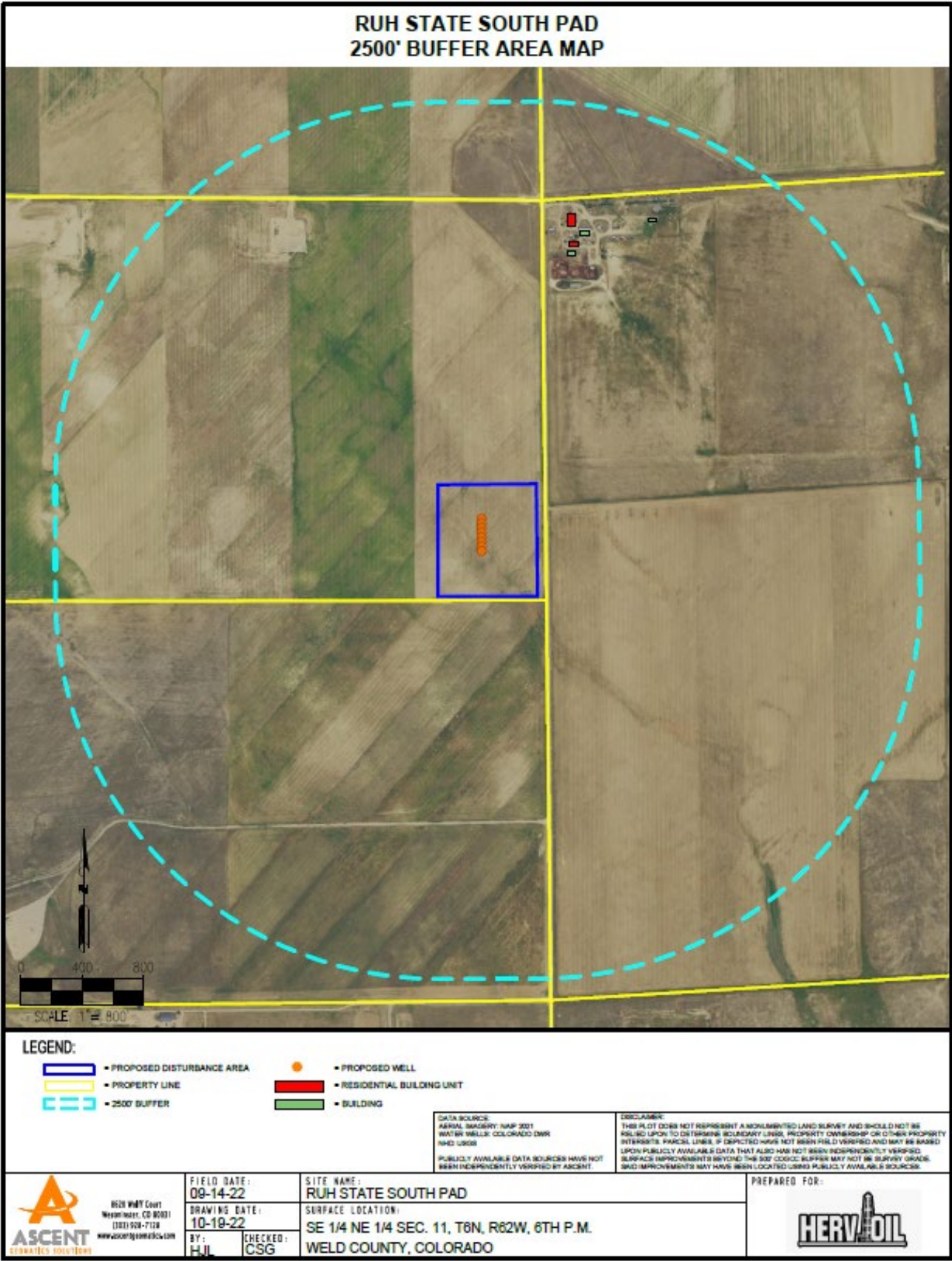
Project Location Access Map and Muster Point



Haul Route Map



2500 Foot Buffer Area Map



SECTION 6 – SPILL RESPONSE AND CLEAN-UP

a) Spill Response

There are multiple types of hydrocarbons which can be released/spilled during oil and gas production and exploration. Most commonly released are unrefined products such as crude oil and produced water. Refined petroleum products such as diesel, gasoline, and motor oil spills are less common, but still equally important to mitigate. If a spill is found reportable, it will be mitigated in accordance with Colorado Oil and Gas Conservation Commission (“COGCC”) and Colorado Department of Public Health and Environment (“CDPHE”) guidelines.

Once a release has been discovered, it will be immediately stopped and contained if possible and if safe to do so. When containing a spill; a combination of sorbent rolls, pads, mats, socks, or containment boom may be deployed, or earthen berms will be constructed around the release to keep spilled material contained and from spreading. These materials will be provided by a contract company and kept on-site. During a spill, diligent efforts will be made to minimize contact with live vegetation, nearby drainage, rivers, creeks, or streams. If the release is outside of secondary containment or poses a threat to flow off site, or impact environmentally sensitive areas, the Spill Response Organization (“SRO”) listed in Section 3 of this EAP should be notified for cleanup assistance, if needed, and for removal and disposal of spilled materials and contaminated areas.

In the event of a large incident requiring outside assistance/cascading resources, HERV has contracted with the SRO, which possesses a working knowledge of oil and gas operations, emergency response, and the Incident Command System (“ICS”). Once notified SRO personnel can be on location within 12 hours.

b) Spill Reporting

The person reporting a spill may be required to supply the minimum spill assessment information to provide a complete understanding of the incident to local, state, or federal agencies if applicable. Some initial spill response actions and information that may be reported are presented below:

- A spill/release will be reported to the COGCC and/or Weld County LEPC if released material is property of HERV and meets COGCC reporting requirements per the 900 series rules and/or the reporting thresholds mandated by Section 304 of the Emergency Planning and Community Right-To-Know Act (“EPCRA”), general thresholds as follows:
 - The spill/release impacts or threatens to impact any waters of the state, a residence or occupied structure, livestock, or a public byway.
 - The spill/release exceeds 1 bbl outside of berms or other secondary containment.
 - Any spill/release exceeding 5 bbls or 25 gallons of refined petroleum
- A spill/release will be reported to the COGCC if released material is property of HERV and meets the COGCC reporting thresholds (see below), an example would be crude oil released from a separator or produced water from a water vault.

A spill/release will be reported to the CDPHE if the released material is in the custody of a third party and the spill/release meets CDPHE reporting thresholds, or is of any size that impacts or threatens to impact waters of the state, a residence or occupied structure, livestock, or public byway. An example would be an oil hauler over filling a truck and spills product onto the ground next to a flowing irrigation ditch.

Spills are reportable to the COGCC and/or to Weld County LEPC in the following circumstances:

- A. the spill or release impacts or threatens to impact any waters of the state, a residence or occupied structure, livestock or a public byway;

- B. a spill or release in which 1 barrel or more is released outside of berms or other secondary containment;
- C. or any spill or release of 5 barrels or more. If the spill impacts or threatens to impact waters of the state (which include surface water, ground water and dry gullies or storm sewers leading to surface water), it must also be reported immediately to CDPHE (25-8-601 CRS). Petroleum releases of 25 gallons or more.

Once a spill is determined reportable, there is a 24-hour deadline to make initial notification to the LEPC and CDPHE depending on the product ownership. Spills/releases in the custody of HERV will be reported by a Company representative. Spills/releases in the custody of a third party will be reported by the responsible company's EHS Department to the appropriate agency and to HERV.

These regulatory guidelines will be strictly followed by HERV and any contractors operating under HERV guidance during all activities at the Ruh State South Pad site located at SENE Section 11, Township 6 North, Range 62 West.

SECTION 7 – REPORTABLE QUANTITIES

a) Reportable Quantities

Mandated by Section 312 of the Emergency Planning and Community Right-To-Know Act (EPCRA) – also known as SARA Title III – the Tier II form captures information about the types, quantities, and locations of hazardous chemicals at a given facility. The form also lists contact information for the facility's designated emergency point-of-contact.

- Any facility that is required to maintain MSDSs (or SDSs) under the Occupational Safety and Health Administration ("OSHA") 49 CFR 1910.1200 regulations for hazardous chemicals stored or used in the workplace.
- Facilities with chemicals in quantities that equal or exceed the lists of lists thresholds must report.
- Propane, benzene, propane and methane are on the lists of lists and are known to be in crude oil. In addition, diesel is on the lists of lists and may be stored on oil and gas sites during construction and development.

b. Reportable Requirements

If your facility will meet the requirements under 40 CFR Part 370, you must submit your Tier II report to the State of Colorado every year before March 1st.

These regulatory guidelines will be strictly followed by HERV and any contractors operating under HERV guidance during all activities at the Ruh State South Pad located at SENE Section 11, Township 6 North, Range 62 West.

SECTION 8 – EVACUATION INFORMATION

a. Evacuation Plan Procedures (public)

The procedure to be used in alerting the public in the event of an incident which could pose a threat to life or property will be arranged and coordinated with first responders and Weld County Emergency Management.

In the event of an actual emergency, the following steps will be immediately taken:

1. The HERV representative will immediately notify local authorities and first responders (911), to warn the public of a potential chemical exposure.
2. First responders may conduct door to door evacuation notices in addition to reverse 911 and utilizing the Integrated Public Alert and Warning System ("IPAWS").
3. The HERV representative responsible for employees and contract personnel will monitor essential and non-essential personnel traffic on or near the incident site and assist in diverting traffic away from any potentially dangerous areas.
4. General:
 - a. The area included within the radius of exposure is considered to be the zone with the maximum potential hazard, per the Emergency Response Guide ("ERG"). When it is determined that conditions exist which create an additional area (beyond the initial zone of maximum potential hazard) vulnerable to possible hazard, public areas in the additional hazardous area will be evacuated.
 - b. In the event of an incident, after the public areas have been evacuated and traffic stopped, it is expected that local civil authorities will have arrived and within a few hours will have assumed direction of and control of the public, including all public areas.
 - c. HERV will cooperate with these authorities to the fullest extent and will exert every effort by careful advice to such authorities to prevent panic or rumors.
 - d. HERV will dispatch appropriate personnel to the disaster site as soon as possible. The company's personnel will cooperate with and provide such information to civil authorities as they might require.

SECTION 9 – TRAINING AND EXERCISES

TRAINING: The National Incident Management System (“NIMS”) guides all levels of government, nongovernmental organizations and the private sector to work together to prevent, protect against, mitigate, respond to and recover from incidents.

NIMS provides stakeholders across the whole community with the shared vocabulary, systems and processes to successfully deliver the capabilities described in the National Preparedness System. NIMS defines operational systems that guide how personnel work together during incidents.

HERV plays a vital role in the Incident Management System, and personnel train to achieve an understanding of specific roles and response actions in various emergency response scenarios, preparedness, and use of appropriate communication systems.

To maximize HERV Oil, LLC’s impact and willingness to participate in incident operations, HERV should coordinate and integrate with first responders into a Unified Command (UC)—including planning, training, and preparedness exercises. In addition, it is also recommended all HERV Oil, LLC employees who will respond to an incident have the required training for company and agency emergency response interoperability to manage a response.

EXERCISES: Exercises are an important component to test an organization's response readiness, training and familiarity with various emergency response scenarios, participation and engagement with local and or state agencies, and to develop lessons learned to improve emergency response capabilities. Per COGCC guidance number 16, a proposed schedule and type of exercises are provided below:

HERV will conduct annual emergency response exercises and coordinate periodic drills on location with first responders and local government officials.

SECTION 10 – COORDINATION WITH FIRST RESPONDERS

- a) HERV will communicate site construction, drill spud, completion operations and production turn-in-line dates to the Weld County Office of Emergency Management for coordination/communication with local first responders. These dates will be provided a minimum of 7 business days prior to commencement or change in oil and gas development operations.
- b) In the event of an emergency requiring First Responders, Unified Command will be established between the HERV appointed company man on location and First Responders present. Unified Command post will be established based on conditions present at time of incident.
- c) HERV representative and first responders identified in this Emergency Action Plan have reviewed the EAP and have discussed coordination efforts in the event of an emergency situation requiring first responder assistance.
- d) Industry Mutual-Aid: Energy companies operating in Weld County are encouraged to be members of the Colorado Preparedness Response Network (“CPRN”) to support mutual-aid collaboration between industry and public emergency response organizations to achieve a coordinated and effective response to an all-hazards event.

SECTION 11 – Plan Review and Update Procedures

- a) Multi-year plan review and update:
This EAP will be updated as needed, once every five (5) years at minimum, and reviewed annually. HERV intends to engage with CPRN in an effort to improve emergency response preparedness, this EAP, and support mutual-aid collaboration.
- b) Post incident plan review and update:
If an incident occurs that required response personnel HERV will conduct an incident review with all response participants. The review will seek to identify root causes, preventative actions, and corrective actions. If HERV identifies changes that should be made to the EAP based on the review, this EAP will be updated immediately.

FIRE DEPARTMENT RESPONSE GUIDELINES

COMMAND

- Establish initial command post near the oil & gas location entrance.
- Position should provide a clear view of the entire scene.
- Advise responding units and resources to stage near location entrance.
- Locate operator lease sign on location (located at the entrance /site access).
- If industry personnel are not on location, call the 24-Hour Emergency Contact number located on the sign.
- Establish unified command with operator on-site liaison.
- Develop incident action plan with the operator to mitigate incident
- **Strategy - Always defensive unless a life safety need is identified!**

INCIDENT STABILIZATION

- Implement Hazardous Materials response protocols.
- All personnel operating in hazard zones should be in appropriate PPE, to include a personal mobile air monitoring device.
- Establish Hot, Warm, Cold Zones, and ERG zones.
- Exposure Concerns --- Equipment, nearby structures, neighborhoods, roadways, etc.
- Monitor weather conditions, especially wind direction.
- Air monitoring for vulnerable areas and locations around incident.
- Conduct evacuations of citizens, bystanders, and resources at risk.
- Identify and address any water supply and/or foam requirements necessary to mitigate the incident.

SPECIAL CONSIDERATIONS

- If evacuations are needed, coordinate with Weld County OEM before ordering an evacuation to establish evacuation routes, shelters, shelter in-place and to utilize IPAWS (reverse 9-1-1).
- Request mutual aid apparatus and equipment asap to minimize operational delays.
- Consider and address any potential impacts to critical receptors identified near the location.
- Consider requesting a HazMat Team if needed to assist with mitigation.
- Consider requiring a fire investigation for any fire and/or explosion.
- Keep the public and stakeholders informed of response activities.
- Notify FAA if Air Traffic restrictions are needed (requested through OEM) (**very large incident**)

INDUSTRY RESPONSE OBJECTIVES

Ensure safety of the public, first responders, employees, and contractors. Minimize impact to the environment and local community. The following response objectives checklist shall be followed:

SAFETY - PROTECT LIFE

- Evaluate and account for all personnel
- Isolate all potential ignition sources
- Establish site control (safe perimeter and evacuation routes)
- Contact emergency services as needed (911, Fire, LEPC)
- Identify hazard(s) of emitted material (obtain SDS)
- Implement air monitoring around impacted area
- Continually assess site hazards/risks

RESPONSE - INCIDENT STABILIZATION

- Notify internal personnel and agencies
- Assign on-site liaison to the incident commander
- Establish a unified command post and field communications
- Establish Hot, Warm, Cold Zones, and ERG Zone
- Identify and establish staging area to support response operations
- Activate emergency shutdown procedures (ESD)
- Activate response action contractors for equipment and manpower as needed (e.g, Well Control, spill/HazMat clean-up, etc.)

ENVIRONMENTAL - PROTECT THE ENVIRONMENT

- Identify, prioritize, and protect environmentally sensitive areas
- Verify if water has been impacted
- Implement waste handling, disposal and decontamination procedures as needed
- Contain and recover spilled materials
- Notify appropriate agencies

SPECIAL CONSIDERATIONS

- Keep the public and stakeholders informed of response activities

* Is Water Supply Available on Location?

FIRE HYDRANTS –
WATER STORAGE TANKS –

RUH STATE SOUTH PAD FACILITY INFORMATION

Well Pad Liquid Storage:

- 6 Oil Tanks (BBL)
 - 500 BBL Each
 - 3,000 BBL / 126,000 GAL Total
 - (Permanent)
- 1 Water Tank (BBL)
 - 500 BBL Each
 - 500 BBL / 21,000 GAL Total
 - (Permanent)
- 2 Water Minion Tank (BBL)
 - 10,000 BBL Each
 - 20,000 BBL / 840,000 GAL Total
 - (Temporary)

*1 Barrel (BBL) = 42 Gallons

* Specific Facility Hazardous Conditions: (chemicals stored on site)

Drilling	Drilling Fluid (Mud) and Misc. Additives	See EAP
	Calcium Ammonium Nitrate	See EAP
	Diesel	See EAP
Storage Location		
Drill Pad / Rig		
Completions	Diesel	See EAP
Storage Location		
Frac Pad		
Completions	Biocide	See EAP
	Hydrochloric Acid	See EAP
	Sodium Chlorite and Hypochlorite	See EAP
Storage Location		
Frac Pad / Chem Trailer		
Flowback	Oil	See EAP
	Water	See EAP
Storage Location		
Tanks		
Production	Oil	See EAP
	Water	See EAP
	Corrosion Inhibitor	See EAP
	Emulsion Breaker	See EAP
Storage Location		
Wellhead / Tanks		



RUH STATE SOUTH PAD

ADDRESS: 34601 CR 83

FACILITY LOCATION: 40.50305 °N, 104.28135 °W

ACCESS LOCATION: 40.50326 °N, 104.27988 °W

NOTIFICATIONS

1. HERV Oil, LLC 24-Hour Hotline
918-605-5128
ATTN: EHS Supervisor / Manager: Bennett Neale
2. Briggsdale Fire Protection District
911 & 970-353-3890 (NON-EMERGENCY)
3. Weld County OEM
970-350-9600
4. Weld County Sheriff
970-356-4015
5. Colorado Highway State Patrol
303-239-4501
6. Weld County O&G Energy Department
970-400-3580
7. Colorado Oil & Gas Commission
303-894-2100
8. Colorado Department of Public Health & Environment
877-518-5608
9. Colorado Parks & Wildlife
303-291-7227
10. National Response Center
800-424-8802

CRITICAL RECEPTORS

1. WELD COUNTY ROAD 83
2. OVERHEAD UTILITY



SITE NAME:
RUH STATE SOUTH PAD

SURFACE LOCATION:

SE 1/4 NE 1/4 SEC. 11, T6N, R62W, 6TH P.M.

WELD COUNTY, COLORADO



FIELD DATE:

09-14-22

DRAWING DATE:

12-20-22

BY:

HJL

CHECKED BY:

JDH

LEGEND

- = PRIMARY MUSTER POINT
- = SECONDARY MUSTER POINT
- = PRIMARY INGRESS/EGRESS
- = CRITICAL RECEPTOR
- = PROPOSED WELL

- = PROPOSED DISTURBANCE AREA
- = PROPOSED FACILITIES
- = HOT, WARM, & COLD BUFFER ZONES
- = EXISTING FACILITIES
- = PROPOSED MLVT
- = PLUGGED & ABANDONED WELL
- = EXISTING WELL

- = PUBLIC ROAD
- = PRIVATE ROAD
- = FENCE
- = PROPOSED ACCESS ROAD
- = WETLAND
- = OVERHEAD UTILITY
- = RESIDENTIAL BUILDING UNIT

Note: This Tactical Response Card is a reference tool and is intended to provide guidance during an actual event or exercise. Placement of resources may need to be adjusted according to environmental variables. It is the responsibility of emergency response personnel to be trained in response and to be able to make adjustments to the card as needed.

DATA SOURCES:
AERIAL IMAGERY: NAIP 2021
HYDROLOGY: NHD

PUBLICLY AVAILABLE DATA SOURCES HAVE NOT BEEN INDEPENDENTLY VERIFIED BY ASCENT.