

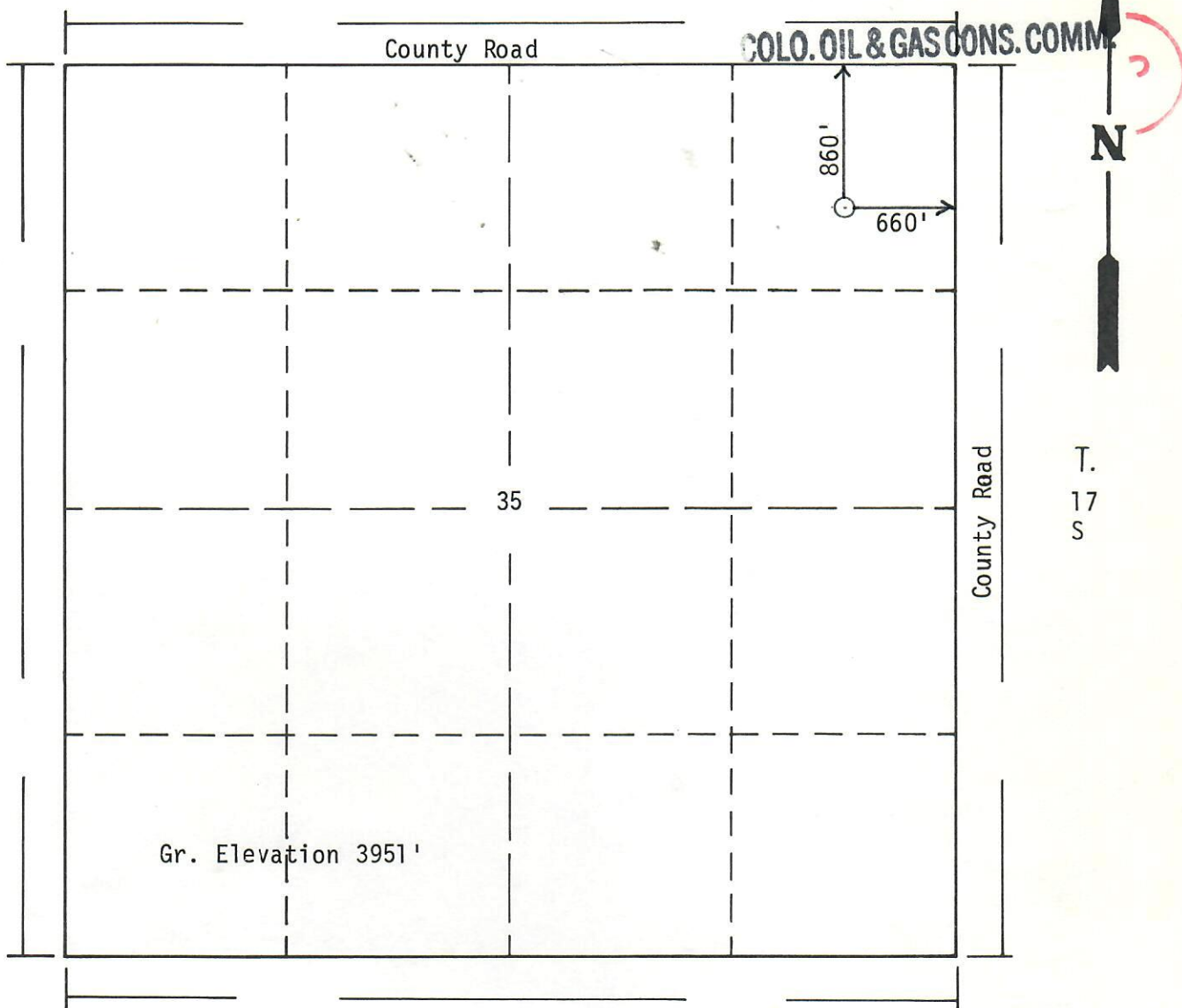


Form PS-102

R. 42 W



JUN 15 1989



COLO.OIL & GAS CONS.COMM.

N

T.
17
S

Scale: 1"=1000'

Powers Elevation of Denver, Colorado has in accordance with a request from Kitty Wood for Yates Petroleum Corp. determined the location of #1 Harding to be 860fn1, 660fe1 Section 35 , Township 17 S Range 42 W of the 6th Principal Meridian, Kiowa County, Colorado

I hereby certify that this plat is an accurate representation of a correct survey showing the location of #1 Harding

Licensed Land Surveyor No. 20693
State of Colorado

