

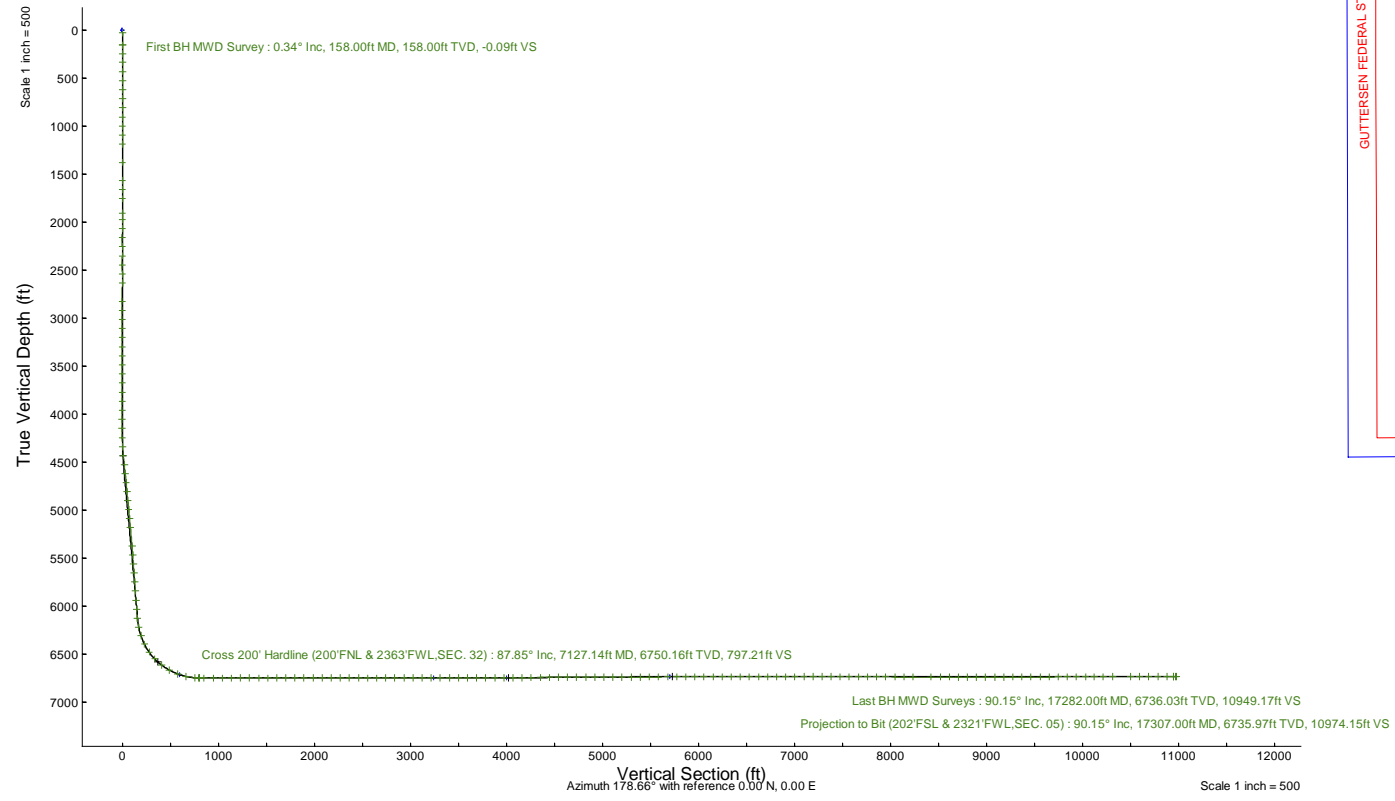
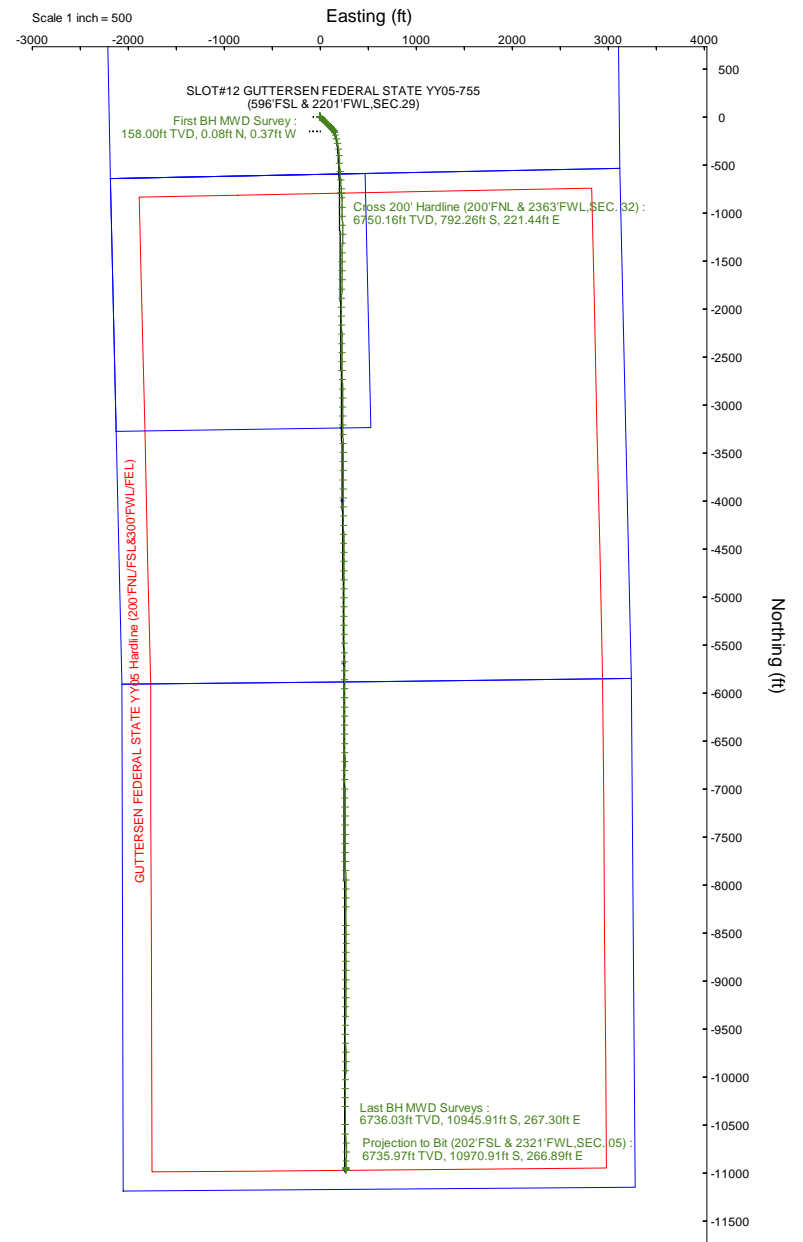
NOBLE ENERGY, INC

Location: COLORADO Slot: SLOT#12 GUTTERSEN FEDERAL STATE YY05-755 (596FSL & 2201FWL,SEC.29)
 Field: WELD COUNTY (NOBLE NAD 83 GRID) Well: GUTTERSEN FEDERAL STATE YY05-755
 Facility: SEC.29-T03N-R63W Wellbore: GUTTERSEN FEDERAL STATE YY05-755 PWB

Plot reference wellpath is GUTTERSEN FEDERAL STATE YY05-755 (REV-C.0) PWP
 True vertical depths are referenced to (4862'GL+30'KB @4892'RKB) (RKB)
 Reference wellpath measured depths are referenced to (4862'GL+30'KB @4892'RKB) (RKB)
 (4862'GL+30'KB @4892'RKB) (RKB) to Mean Sea Level: 4892 feet
 Mean Sea Level to Ground level (At Slot: SLOT#12 GUTTERSEN FEDERAL STATE YY05-755 (596FSL & 2201FWL,SEC.29)): 0 feet
 Offset wellpath MDs are referenced to each path's default MD datum
 Grid System: NAD83 / Lambert Colorado SP, Northern Zone (501), US feet
 North Reference: Grid north
 Scale: True distance
 Coordinates are in feet referenced to Slot
 Depths are in feet
 Created by: guenaler on 2023-11-03; Database: WA_Denver

Location Information

Facility Name		Grid East (US ft)	Grid North (US ft)	Latitude	Longitude	
SEC.29-T03N-R63W		3289525.528	1313900.892	40°11'25.4760"N	104°27'49.0680"W	
Slot	Local N (ft)	Local E (ft)	Grid East (US ft)	Grid North (US ft)	Latitude	Longitude
SLOT#12 GUTTERSEN FEDERAL STATE YY05-755 (596FSL & 2201FWL,SEC.29)	151.41	111.95	3289637.470	1314052.296	40°11'26.9592"N	104°27'47.6028"W
(4862'GL+30'KB @4892'RKB) (RKB) to Ground level (At Slot: SLOT#12 GUTTERSEN FEDERAL STATE YY05-755 (596FSL & 2201FWL,SEC.29))						4892ft
Mean Sea Level to Ground level (At Slot: SLOT#12 GUTTERSEN FEDERAL STATE YY05-755 (596FSL & 2201FWL,SEC.29))						0ft
(4862'GL+30'KB @4892'RKB) (RKB) to Mean Sea Level						4892ft





Actual Wellpath Report

GUTTERSEN FEDERAL STATE YY05-755 AWP
Page 1 of 8



REFERENCE WELLPATH IDENTIFICATION			
Operator	NOBLE ENERGY, INC	Well	GUTTERSEN FEDERAL STATE YY05-755
Field	WELD COUNTY (NOBLE NAD 83 GRID)	API/Legal	05-123-48644
Facility	SEC.29-T03N-R63W	Wellbore	GUTTERSEN FEDERAL STATE YY05-755 AWB
Slot	SLOT#12 GUTTERSEN FEDERAL STATE YY05-755 (596'FSL & 2201'FWL,SEC.29)		

REPORT SETUP INFORMATION			
Projection System	NAD83 / Lambert Colorado SP, Northern Zone (501), US feet	Software System	WellArchitect® 6.0
North Reference	Grid	User	Guenaler
Scale	0.999957	Report Generated	11/3/2023 at 10:28:19 AM
Convergence at slot	0.67° East	Database	WA_Denver

WELLPATH LOCATION						
	Local coordinates		Grid coordinates		Geographic coordinates	
	North[ft]	East[ft]	Easting[US ft]	Northing[US ft]	Latitude	Longitude
Slot Location	151.41	111.95	3289637.47	1314052.30	40.1908220°	-104.4632230°
Facility Reference Pt			3289525.53	1313900.89	40.1904100°	-104.4636300°
Field Reference Pt			3000000.00	4454105.15	48.7761986°	-105.5000000°

WELLPATH DATUM			
Calculation method	Minimum curvature	(4862'GL+30'KB@4892'RKB) (RKB) to Facility Vertical Datum	4892.00ft
Horizontal Reference Pt	Slot	(4862'GL+30'KB@4892'RKB) (RKB) to Mean Sea Level	4892.00ft
Vertical Reference Pt	(4862'GL+30'KB@4892'RKB) (RKB)	(4862'GL+30'KB@4892'RKB) (RKB) to Ground Level at Slot (SLOT#12 GUTTERSEN FEDERAL STATE YY05-755 (596'FSL & 2201'FWL,SEC.29))	4892.00ft
MD Reference Pt	(4862'GL+30'KB@4892'RKB) (RKB)	Section Origin	N 0.00, E 0.00 ft
Field Vertical Reference	Mean Sea Level	Section Azimuth	178.66°



Actual Wellpath Report

GUTTERSEN FEDERAL STATE YY05-755 AWP

Page 2 of 8



REFERENCE WELLPATH IDENTIFICATION			
Operator	NOBLE ENERGY, INC	Well	GUTTERSEN FEDERAL STATE YY05-755
Field	WELD COUNTY (NOBLE NAD 83 GRID)	API/Legal	05-123-48644
Facility	SEC.29-T03N-R63W	Wellbore	GUTTERSEN FEDERAL STATE YY05-755 AWB
Slot	SLOT#12 GUTTERSEN FEDERAL STATE YY05-755 (596'FSL & 2201'FWL,SEC.29)		

WELLPATH DATA (181 stations) † = interpolated, ‡ = extrapolated station										
MD [ft]	Inclination [°]	Azimuth [°]	TVD [ft]	Vert Sect [ft]	North [ft]	East [ft]	Latitude	Longitude	DLS [°/100ft]	Comments
0.00†	0.000	282.540	0.00	0.00	0.00	0.00	40.1908220	-104.4632230	0.00	
30.00	0.000	282.540	30.00	0.00	0.00	0.00	40.1908220	-104.4632230	0.00	
158.00	0.340	282.540	158.00	-0.09	0.08	-0.37	40.1908222	-104.4632243	0.27	First BH MWD Survey
248.00	0.440	285.330	248.00	-0.25	0.23	-0.96	40.1908227	-104.4632264	0.11	
338.00	0.350	291.890	338.00	-0.46	0.43	-1.55	40.1908232	-104.4632285	0.11	
432.00	0.440	284.830	431.99	-0.68	0.63	-2.17	40.1908238	-104.4632307	0.11	
527.00	0.470	318.490	526.99	-1.07	1.01	-2.78	40.1908249	-104.4632329	0.28	
622.00	0.390	275.270	621.99	-1.41	1.33	-3.36	40.1908258	-104.4632350	0.34	
716.00	0.290	280.280	715.99	-1.49	1.40	-3.91	40.1908260	-104.4632369	0.11	
811.00	0.400	279.340	810.98	-1.60	1.50	-4.48	40.1908263	-104.4632390	0.12	
906.00	0.390	268.800	905.98	-1.67	1.55	-5.13	40.1908264	-104.4632413	0.08	
1000.00	0.360	275.240	999.98	-1.70	1.57	-5.74	40.1908265	-104.4632435	0.05	
1095.00	0.280	270.820	1094.98	-1.74	1.60	-6.27	40.1908266	-104.4632454	0.09	
1190.00	0.300	264.040	1189.98	-1.73	1.58	-6.75	40.1908265	-104.4632471	0.04	
1379.00	0.080	64.410	1378.98	-1.75	1.58	-7.12	40.1908266	-104.4632484	0.20	
1568.00	0.340	71.750	1567.98	-1.96	1.81	-6.47	40.1908272	-104.4632461	0.14	
1663.00	0.260	75.590	1662.97	-2.10	1.96	-5.99	40.1908276	-104.4632444	0.09	
1758.00	0.090	104.420	1757.97	-2.12	1.99	-5.71	40.1908276	-104.4632434	0.20	
1910.00	0.200	244.680	1909.97	-1.98	1.85	-5.84	40.1908273	-104.4632438	0.18	
1973.00	0.250	261.250	1972.97	-1.92	1.78	-6.07	40.1908271	-104.4632447	0.13	
2068.00	0.370	13.540	2067.97	-2.19	2.05	-6.21	40.1908278	-104.4632451	0.55	
2162.00	0.190	347.940	2161.97	-2.64	2.49	-6.17	40.1908290	-104.4632450	0.23	
2257.00	0.260	172.720	2256.97	-2.58	2.43	-6.17	40.1908289	-104.4632450	0.47	
2352.00	0.330	49.060	2351.97	-2.54	2.40	-5.94	40.1908288	-104.4632442	0.55	
2446.00	0.110	128.230	2445.97	-2.65	2.52	-5.66	40.1908291	-104.4632432	0.35	
2541.00	0.090	129.860	2540.97	-2.55	2.42	-5.53	40.1908288	-104.4632427	0.02	
2636.00	0.060	14.740	2635.97	-2.54	2.42	-5.46	40.1908288	-104.4632425	0.13	
2825.00	0.110	262.660	2824.97	-2.62	2.49	-5.62	40.1908290	-104.4632430	0.08	
2920.00	0.190	29.130	2919.97	-2.75	2.62	-5.63	40.1908294	-104.4632431	0.28	
3014.00	0.120	85.910	3013.97	-2.89	2.76	-5.46	40.1908297	-104.4632424	0.17	
3109.00	0.070	113.520	3108.97	-2.87	2.74	-5.31	40.1908297	-104.4632419	0.07	
3204.00	0.090	70.140	3203.97	-2.87	2.74	-5.18	40.1908297	-104.4632414	0.07	
3299.00	0.090	115.290	3298.97	-2.86	2.74	-5.05	40.1908297	-104.4632409	0.07	
3393.00	0.170	73.150	3392.97	-2.86	2.75	-4.85	40.1908297	-104.4632402	0.13	
3488.00	0.170	116.740	3487.97	-2.83	2.72	-4.58	40.1908296	-104.4632393	0.13	
3583.00	0.110	351.850	3582.97	-2.86	2.75	-4.47	40.1908297	-104.4632389	0.26	
3677.00	0.100	339.760	3676.97	-3.02	2.92	-4.51	40.1908302	-104.4632390	0.03	
3772.00	0.110	344.450	3771.97	-3.19	3.08	-4.57	40.1908306	-104.4632392	0.01	
3867.00	0.130	352.750	3866.97	-3.38	3.28	-4.60	40.1908311	-104.4632393	0.03	
3961.00	0.070	78.420	3960.97	-3.50	3.40	-4.56	40.1908315	-104.4632392	0.15	
4056.00	0.190	60.310	4055.97	-3.59	3.49	-4.37	40.1908317	-104.4632385	0.13	
4151.00	0.390	29.090	4150.97	-3.94	3.85	-4.07	40.1908327	-104.4632374	0.26	
4246.00	2.270	136.100	4245.94	-2.83	2.77	-2.61	40.1908297	-104.4632322	2.54	
4340.00	4.980	136.230	4339.74	1.55	-1.52	1.50	40.1908178	-104.4632177	2.88	
4435.00	7.630	134.430	4434.16	9.11	-8.91	8.86	40.1907973	-104.4631917	2.80	



Actual Wellpath Report

GUTTERSEN FEDERAL STATE YY05-755 AWP

Page 3 of 8



REFERENCE WELLPATH IDENTIFICATION			
Operator	NOBLE ENERGY, INC	Well	GUTTERSEN FEDERAL STATE YY05-755
Field	WELD COUNTY (NOBLE NAD 83 GRID)	API/Legal	05-123-48644
Facility	SEC.29-T03N-R63W	Wellbore	GUTTERSEN FEDERAL STATE YY05-755 AWB
Slot	SLOT#12 GUTTERSEN FEDERAL STATE YY05-755 (596'FSL & 2201'FWL,SEC.29)		

WELLPATH DATA (181 stations) † = interpolated, ‡ = extrapolated station										
MD [ft]	Inclination [°]	Azimuth [°]	TVD [ft]	Vert Sect [ft]	North [ft]	East [ft]	Latitude	Longitude	DLS [°/100ft]	Comments
4530.00	8.220	134.990	4528.25	18.55	-18.13	18.17	40.1907717	-104.4631587	0.63	
4624.00	8.100	135.680	4621.30	28.25	-27.62	27.55	40.1907453	-104.4631256	0.16	
4719.00	7.790	134.780	4715.39	37.79	-36.94	36.79	40.1907194	-104.4630929	0.35	
4814.00	7.540	134.420	4809.54	46.89	-45.84	45.81	40.1906947	-104.4630609	0.27	
4908.00	7.510	135.100	4902.73	55.76	-54.50	54.55	40.1906706	-104.4630300	0.10	
5003.00	7.530	135.180	4996.91	64.78	-63.32	63.32	40.1906462	-104.4629990	0.02	
5098.00	7.570	135.510	5091.09	73.86	-72.20	72.10	40.1906215	-104.4629680	0.06	
5192.00	7.620	135.370	5184.27	82.91	-81.05	80.81	40.1905969	-104.4629371	0.06	
5382.00	6.540	134.340	5372.81	99.82	-97.58	97.40	40.1905510	-104.4628785	0.57	
5476.00	5.380	136.990	5466.30	106.94	-104.54	104.24	40.1905317	-104.4628543	1.27	
5571.00	5.270	136.460	5560.89	113.50	-110.96	110.28	40.1905139	-104.4628329	0.13	
5666.00	5.410	135.880	5655.48	120.02	-117.34	116.41	40.1904962	-104.4628113	0.16	
5760.00	5.400	136.850	5749.06	126.57	-123.74	122.52	40.1904784	-104.4627897	0.10	
5855.00	5.410	137.000	5843.64	133.25	-130.28	128.63	40.1904603	-104.4627681	0.02	
5950.00	5.460	137.170	5938.22	139.98	-136.87	134.75	40.1904420	-104.4627464	0.06	
6044.00	5.330	136.790	6031.80	146.58	-143.33	140.78	40.1904241	-104.4627251	0.14	
6139.00	5.310	156.070	6126.40	153.92	-150.57	145.59	40.1904040	-104.4627082	1.87	
6234.00	12.390	168.770	6220.21	168.04	-164.60	149.36	40.1903654	-104.4626953	7.69	
6328.00	20.180	164.410	6310.38	193.73	-190.15	155.69	40.1902951	-104.4626737	8.38	
6423.00	26.680	163.930	6397.50	230.28	-226.47	166.01	40.1901951	-104.4626383	6.85	
6518.00	35.570	166.490	6478.74	278.01	-273.92	178.39	40.1900644	-104.4625960	9.46	
6612.00	43.290	171.740	6551.31	336.83	-332.51	189.43	40.1899033	-104.4625589	8.94	
6707.00	52.780	177.110	6614.79	407.17	-402.70	196.04	40.1897104	-104.4625382	10.83	
6802.00	61.510	178.060	6666.28	486.88	-482.36	199.36	40.1894916	-104.4625297	9.23	
6896.00	68.470	175.870	6706.00	571.97	-567.37	203.92	40.1892581	-104.4625169	7.70	
6991.00	76.930	174.890	6734.23	662.44	-657.69	211.23	40.1890100	-104.4624945	8.96	
7086.00	86.300	175.840	6748.07	756.16	-751.26	218.81	40.1887529	-104.4624713	9.91	
7127.14†	87.853	176.804	6750.16	797.21	-792.26	221.44	40.1886403	-104.4624636	4.44	Cross 200' Hardline (200'FNL & 2363'FWL,SEC. 32)
7130.00†	87.961	176.871	6750.27	800.07	-795.11	221.60	40.1886324	-104.4624632	4.44	Shallowest MD for Perf
7180.00	89.850	178.040	6751.22	850.04	-845.05	223.82	40.1884953	-104.4624573	4.44	
7275.00	90.120	178.630	6751.25	945.04	-940.01	226.58	40.1882346	-104.4624514	0.68	
7370.00	90.090	178.770	6751.07	1040.04	-1034.99	228.74	40.1879738	-104.4624477	0.15	
7464.00	90.280	179.090	6750.77	1134.04	-1128.97	230.49	40.1877158	-104.4624453	0.40	
7559.00	90.340	180.750	6750.26	1229.01	-1223.97	230.62	40.1874550	-104.4624488	1.75	
7653.00	89.660	180.410	6750.26	1322.96	-1317.96	229.67	40.1871971	-104.4624562	0.81	
7748.00	89.940	180.660	6750.59	1417.91	-1412.96	228.79	40.1869364	-104.4624633	0.40	
7843.00	90.090	180.620	6750.56	1512.85	-1507.95	227.72	40.1866757	-104.4624711	0.16	
7937.00	90.430	180.940	6750.14	1606.79	-1601.94	226.45	40.1864177	-104.4624796	0.50	
8032.00	90.310	180.930	6749.52	1701.71	-1696.92	224.90	40.1861570	-104.4624891	0.13	
8127.00	90.250	180.620	6749.06	1796.64	-1791.91	223.61	40.1858964	-104.4624977	0.33	
8221.00	90.340	180.780	6748.57	1890.58	-1885.91	222.46	40.1856384	-104.4625058	0.20	
8316.00	90.000	180.420	6748.29	1985.53	-1980.90	221.47	40.1853777	-104.4625133	0.52	
8410.00	90.310	179.450	6748.04	2079.50	-2074.90	221.57	40.1851197	-104.4625169	1.08	
8505.00	89.290	179.520	6748.37	2174.49	-2169.89	222.43	40.1848589	-104.4625178	1.08	
8600.00	90.150	179.730	6748.83	2269.48	-2264.89	223.05	40.1845981	-104.4625195	0.93	



Actual Wellpath Report

GUTTERSEN FEDERAL STATE YY05-755 AWP

Page 4 of 8



REFERENCE WELLPATH IDENTIFICATION			
Operator	NOBLE ENERGY, INC	Well	GUTTERSEN FEDERAL STATE YY05-755
Field	WELD COUNTY (NOBLE NAD 83 GRID)	API/Legal	05-123-48644
Facility	SEC.29-T03N-R63W	Wellbore	GUTTERSEN FEDERAL STATE YY05-755 AWB
Slot	SLOT#12 GUTTERSEN FEDERAL STATE YY05-755 (596'FSL & 2201'FWL,SEC.29)		

WELLPATH DATA (181 stations)										
MD [ft]	Inclination [°]	Azimuth [°]	TVD [ft]	Vert Sect [ft]	North [ft]	East [ft]	Latitude	Longitude	DLS [°/100ft]	Comments
8694.00	90.090	179.450	6748.64	2363.46	-2358.89	223.72	40.1843401	-104.4625211	0.30	
8789.00	88.490	178.340	6749.81	2458.45	-2453.86	225.55	40.1840794	-104.4625185	2.05	
8884.00	90.340	179.620	6750.78	2553.44	-2548.83	227.24	40.1838186	-104.4625164	2.37	
8978.00	89.970	179.270	6750.53	2647.43	-2642.83	228.15	40.1835606	-104.4625171	0.54	
9073.00	90.370	179.280	6750.25	2742.42	-2737.82	229.36	40.1832998	-104.4625168	0.42	
9168.00	90.280	179.490	6749.71	2837.41	-2832.81	230.38	40.1830391	-104.4625171	0.24	
9262.00	89.910	179.650	6749.55	2931.40	-2926.81	231.08	40.1827810	-104.4625185	0.43	
9357.00	90.000	179.610	6749.63	3026.39	-3021.81	231.70	40.1825203	-104.4625203	0.10	
9452.00	90.340	179.380	6749.35	3121.38	-3116.80	232.53	40.1822595	-104.4625213	0.43	
9546.00	90.250	179.430	6748.86	3215.37	-3210.79	233.51	40.1820015	-104.4625217	0.11	
9641.00	89.110	178.360	6749.39	3310.36	-3305.77	235.34	40.1817407	-104.4625191	1.65	
9736.00	90.180	179.440	6749.98	3405.36	-3400.75	237.16	40.1814800	-104.4625166	1.60	
9830.00	90.370	179.630	6749.53	3499.35	-3494.75	237.93	40.1812219	-104.4625178	0.29	
9925.00	90.310	179.790	6748.97	3594.33	-3589.74	238.41	40.1809612	-104.4625200	0.18	
10020.00	90.250	179.540	6748.50	3689.31	-3684.74	238.96	40.1807004	-104.4625220	0.27	
10114.00	90.180	179.610	6748.15	3783.30	-3778.74	239.66	40.1804424	-104.4625235	0.11	
10209.00	90.150	179.440	6747.88	3878.29	-3873.73	240.45	40.1801816	-104.4625246	0.18	
10304.00	90.150	179.800	6747.63	3973.28	-3968.73	241.08	40.1799208	-104.4625264	0.38	
10398.00	90.340	179.470	6747.23	4067.26	-4062.73	241.68	40.1796628	-104.4625281	0.41	
10493.00	90.520	179.650	6746.51	4162.25	-4157.72	242.41	40.1794020	-104.4625295	0.27	
10588.00	90.520	179.930	6745.65	4257.22	-4252.72	242.75	40.1791413	-104.4625322	0.29	
10682.00	90.550	179.810	6744.77	4351.20	-4346.71	242.97	40.1788833	-104.4625354	0.13	
10777.00	90.550	179.770	6743.86	4446.18	-4441.71	243.32	40.1786225	-104.4625382	0.04	
10872.00	90.090	179.290	6743.33	4541.16	-4536.70	244.10	40.1783618	-104.4625393	0.70	
10967.00	90.310	179.870	6743.00	4636.15	-4631.70	244.79	40.1781010	-104.4625408	0.65	
11061.00	90.220	179.650	6742.56	4730.13	-4725.70	245.19	40.1778430	-104.4625434	0.25	
11156.00	90.400	179.620	6742.05	4825.12	-4820.69	245.79	40.1775822	-104.4625452	0.19	
11251.00	90.120	179.580	6741.62	4920.10	-4915.69	246.45	40.1773214	-104.4625468	0.30	
11345.00	90.250	179.700	6741.31	5014.09	-5009.69	247.04	40.1770634	-104.4625486	0.19	
11440.00	90.280	179.630	6740.88	5109.07	-5104.69	247.60	40.1768026	-104.4625506	0.08	
11535.00	90.310	179.840	6740.39	5204.06	-5199.68	248.04	40.1765419	-104.4625530	0.22	
11630.00	90.340	179.810	6739.85	5299.03	-5294.68	248.33	40.1762811	-104.4625559	0.04	
11724.00	90.370	179.730	6739.27	5393.01	-5388.68	248.71	40.1760231	-104.4625585	0.09	
11819.00	90.310	179.730	6738.70	5488.00	-5483.68	249.15	40.1757623	-104.4625609	0.06	
11914.00	90.250	179.570	6738.24	5582.98	-5578.67	249.74	40.1755016	-104.4625628	0.18	
12009.00	90.280	179.750	6737.80	5677.97	-5673.67	250.30	40.1752408	-104.4625647	0.19	
12103.00	90.220	179.740	6737.39	5771.95	-5767.67	250.72	40.1749828	-104.4625672	0.06	
12198.00	89.820	179.560	6737.35	5866.93	-5862.67	251.30	40.1747220	-104.4625691	0.46	
12293.00	89.910	179.780	6737.58	5961.92	-5957.67	251.84	40.1744612	-104.4625711	0.25	
12387.00	89.910	179.600	6737.73	6055.90	-6051.66	252.35	40.1742032	-104.4625732	0.19	
12482.00	89.910	179.560	6737.88	6150.89	-6146.66	253.05	40.1739424	-104.4625747	0.04	
12577.00	89.910	179.650	6738.02	6245.88	-6241.66	253.70	40.1736817	-104.4625763	0.09	
12672.00	90.060	179.610	6738.05	6340.86	-6336.66	254.32	40.1734209	-104.4625781	0.16	
12766.00	90.000	179.640	6738.00	6434.85	-6430.65	254.93	40.1731629	-104.4625799	0.07	
12861.00	89.940	179.520	6738.05	6529.84	-6525.65	255.63	40.1729021	-104.4625813	0.14	



Actual Wellpath Report

GUTTERSEN FEDERAL STATE YY05-755 AWP

Page 5 of 8



REFERENCE WELLPATH IDENTIFICATION			
Operator	NOBLE ENERGY, INC	Well	GUTTERSEN FEDERAL STATE YY05-755
Field	WELD COUNTY (NOBLE NAD 83 GRID)	API/Legal	05-123-48644
Facility	SEC.29-T03N-R63W	Wellbore	GUTTERSEN FEDERAL STATE YY05-755 AWB
Slot	SLOT#12 GUTTERSEN FEDERAL STATE YY05-755 (596'FSL & 2201'FWL,SEC.29)		

WELLPATH DATA (181 stations)										
MD [ft]	Inclination [°]	Azimuth [°]	TVD [ft]	Vert Sect [ft]	North [ft]	East [ft]	Latitude	Longitude	DLS [°/100ft]	Comments
12956.00	90.030	179.790	6738.07	6624.83	-6620.65	256.20	40.1726413	-104.4625833	0.30	
13050.00	90.250	179.900	6737.84	6718.80	-6714.65	256.46	40.1723833	-104.4625863	0.26	
13145.00	90.090	180.470	6737.56	6813.77	-6809.65	256.15	40.1721226	-104.4625914	0.62	
13240.00	90.120	179.780	6737.39	6908.74	-6904.65	255.94	40.1718618	-104.4625961	0.73	
13335.00	90.120	179.750	6737.19	7003.72	-6999.65	256.33	40.1716010	-104.4625987	0.03	
13429.00	90.030	179.580	6737.07	7097.71	-7093.64	256.88	40.1713430	-104.4626006	0.20	
13524.00	90.030	179.850	6737.02	7192.69	-7188.64	257.35	40.1710822	-104.4626029	0.28	
13618.00	89.970	179.520	6737.02	7286.68	-7282.64	257.87	40.1708242	-104.4626050	0.36	
13713.00	89.880	179.490	6737.14	7381.66	-7377.64	258.69	40.1705634	-104.4626060	0.10	
13808.00	89.910	179.570	6737.32	7476.65	-7472.63	259.47	40.1703027	-104.4626072	0.09	
13902.00	90.030	179.530	6737.36	7570.64	-7566.63	260.21	40.1700446	-104.4626085	0.13	
13997.00	89.940	179.640	6737.39	7665.63	-7661.63	260.90	40.1697839	-104.4626100	0.15	
14092.00	89.910	179.530	6737.51	7760.62	-7756.63	261.58	40.1695231	-104.4626116	0.12	
14186.00	89.880	178.930	6737.69	7854.61	-7850.62	262.85	40.1692651	-104.4626110	0.64	
14281.00	89.880	179.650	6737.89	7949.61	-7945.61	264.03	40.1690043	-104.4626107	0.76	
14376.00	89.820	179.350	6738.13	8044.60	-8040.61	264.85	40.1687435	-104.4626117	0.32	
14470.00	89.880	179.430	6738.38	8138.59	-8134.60	265.86	40.1684855	-104.4626121	0.11	
14565.00	90.060	179.770	6738.43	8233.57	-8229.60	266.52	40.1682247	-104.4626137	0.40	
14754.00	89.850	179.660	6738.58	8422.54	-8418.59	267.46	40.1677059	-104.4626183	0.13	
14849.00	89.850	179.070	6738.83	8517.53	-8513.59	268.51	40.1674451	-104.4626185	0.62	
14943.00	89.940	180.710	6739.00	8611.51	-8607.58	268.69	40.1671871	-104.4626218	1.75	
15038.00	89.910	180.370	6739.12	8706.46	-8702.58	267.80	40.1669264	-104.4626289	0.36	
15133.00	89.820	180.180	6739.35	8801.42	-8797.58	267.34	40.1666657	-104.4626345	0.22	
15227.00	89.780	180.430	6739.68	8895.38	-8891.58	266.84	40.1664077	-104.4626403	0.27	
15322.00	90.090	180.940	6739.78	8990.32	-8986.57	265.70	40.1661470	-104.4626483	0.63	
15417.00	90.150	179.380	6739.58	9085.29	-9081.57	265.44	40.1658862	-104.4626532	1.64	
15511.00	90.220	181.030	6739.28	9179.25	-9175.56	265.10	40.1656283	-104.4626584	1.76	
15606.00	90.120	180.510	6739.00	9274.18	-9270.55	263.83	40.1653676	-104.4626669	0.56	
15701.00	90.030	180.530	6738.87	9369.13	-9365.55	262.96	40.1651068	-104.4626740	0.10	
15795.00	90.030	180.520	6738.83	9463.08	-9459.54	262.10	40.1648489	-104.4626810	0.01	
15890.00	90.280	180.690	6738.57	9558.03	-9554.54	261.10	40.1645882	-104.4626885	0.32	
15985.00	90.120	177.600	6738.24	9653.01	-9649.52	262.52	40.1643274	-104.4626875	3.26	
16079.00	90.120	179.900	6738.04	9747.01	-9743.49	264.57	40.1640694	-104.4626841	2.45	
16174.00	90.120	180.670	6737.84	9841.97	-9838.48	264.09	40.1638087	-104.4626897	0.81	
16269.00	90.030	180.360	6737.72	9936.92	-9933.48	263.24	40.1635480	-104.4626967	0.34	
16363.00	90.120	181.070	6737.59	10030.86	-10027.47	262.07	40.1632900	-104.4627049	0.76	
16455.00	90.120	180.720	6737.40	10122.79	-10119.46	260.63	40.1630376	-104.4627139	0.38	
16549.00	90.030	180.090	6737.28	10216.74	-10213.46	259.97	40.1627796	-104.4627202	0.68	
16644.00	90.280	180.680	6737.02	10311.70	-10308.46	259.33	40.1625189	-104.4627264	0.67	
16833.00	90.150	180.440	6736.31	10500.59	-10497.44	257.48	40.1620002	-104.4627410	0.14	
16928.00	89.570	174.100	6736.54	10595.52	-10592.29	262.00	40.1617397	-104.4627287	6.70	
17023.00	90.220	176.920	6736.72	10690.36	-10686.99	269.44	40.1614795	-104.4627061	3.05	
17117.00	90.120	181.200	6736.44	10784.34	-10780.95	270.98	40.1612216	-104.4627045	4.55	
17212.00	90.150	181.460	6736.22	10879.24	-10875.93	268.78	40.1609609	-104.4627164	0.28	
17282.00	90.150	180.950	6736.03	10949.17	-10945.91	267.30	40.1607689	-104.4627246	0.73	Last BH MWD Surveys



Actual Wellpath Report

GUTTERSEN FEDERAL STATE YY05-755 AWP

Page 6 of 8



REFERENCE WELLPATH IDENTIFICATION			
Operator	NOBLE ENERGY, INC	Well	GUTTERSEN FEDERAL STATE YY05-755
Field	WELD COUNTY (NOBLE NAD 83 GRID)	API/Legal	05-123-48644
Facility	SEC.29-T03N-R63W	Wellbore	GUTTERSEN FEDERAL STATE YY05-755 AWB
Slot	SLOT#12 GUTTERSEN FEDERAL STATE YY05-755 (596'FSL & 2201'FWL,SEC.29)		

WELLPATH DATA (181 stations) † = interpolated, ‡ = extrapolated station										
MD [ft]	Inclination [°]	Azimuth [°]	TVD [ft]	Vert Sect [ft]	North [ft]	East [ft]	Latitude	Longitude	DLS [°/100ft]	Comments
17307.00†	90.150	180.950	6735.97	10974.15	-10970.91	266.89	40.1607003	-104.4627271	0.00	Projection to Bit (202'FSL & 2321'FWL,SEC. 05)

TARGETS								
Name	TVD [ft]	North [ft]	East [ft]	Grid East [US ft]	Grid North [US ft]	Latitude	Longitude	Shape
GUTTERSEN STATE YY05 SEC.05-T02N-R63W New Plat (4-12-23)	-1.00	0.14	-112.60	3289524.87	1314052.44	40.1908260	-104.4636260	polygon
2D Polygon: dimensions not calculated								
GUTTERSEN STATE YY05 SEC.29-T03N-R63W New Plat (4-12-23)	-1.00	0.14	-112.60	3289524.87	1314052.44	40.1908260	-104.4636260	polygon
2D Polygon: dimensions not calculated								
GUTTERSEN STATE YY05 SEC.32-T03N-R63W New Plat (4-12-23)	-1.00	0.14	-112.60	3289524.87	1314052.44	40.1908260	-104.4636260	polygon
2D Polygon: dimensions not calculated								
GUTTERSEN FEDERAL STATE YY05-755 Enter Fed Minerals (0'FNL&2384'FWL,SEC.32)	6715.69	-592.35	194.71	3289832.17	1313459.97	40.1891899	-104.4625509	point
GUTTERSEN FEDERAL STATE YY05-755 BHL REV-2 (200'FSL & 2310'FWL,SEC.05)	6735.00	-10972.60	256.04	3289893.50	1303080.19	40.1606960	-104.4627660	point
GUTTERSEN FEDERAL STATE YY05-755 T2 REV-2	6735.00	-5695.98	244.52	3289881.98	1308356.57	40.1751797	-104.4625864	point
GUTTERSEN FEDERAL STATE YY05-755 Exit Fed Minerals (2645'FNL&2350'FWL,SEC.32)	6748.00	-3238.30	222.27	3289859.73	1310814.14	40.1819263	-104.4625631	point
GUTTERSEN FEDERAL STATE YY05-755 LP /TPZ REV-2 (200'FNL & 2385'FWL,SEC.32)	6748.00	-792.26	199.26	3289836.72	1313260.07	40.1886410	-104.4625430	point
GUTTERSEN FEDERAL STATE YY05-755 T1 REV-2	6748.00	-3995.81	228.54	3289866.00	1310056.66	40.1798469	-104.4625724	point
GUTTERSEN FEDERAL STATE YY05 Hardline (200'FNL/FSL&300'FWL/FEL)	6999.00	0.14	-112.60	3289524.87	1314052.44	40.1908260	-104.4636260	polygon
2D Polygon: dimensions not calculated								
DP 423 Fed Minerals New Plat (4-12-23)	7198.00	0.14	-112.60	3289524.87	1314052.44	40.1908260	-104.4636260	polygon
2D Polygon: dimensions not calculated								



Actual Wellpath Report

GUTTERSEN FEDERAL STATE YY05-755 AWP
Page 7 of 8



REFERENCE WELLPATH IDENTIFICATION			
Operator	NOBLE ENERGY, INC	Well	GUTTERSEN FEDERAL STATE YY05-755
Field	WELD COUNTY (NOBLE NAD 83 GRID)	API/Legal	05-123-48644
Facility	SEC.29-T03N-R63W	Wellbore	GUTTERSEN FEDERAL STATE YY05-755 AWB
Slot	SLOT#12 GUTTERSEN FEDERAL STATE YY05-755 (596'FSL & 2201'FWL,SEC.29)		

WELLPATH COMPOSITION - Ref Wellbore: GUTTERSEN FEDERAL STATE YY05-755 AWB Ref Wellpath: GUTTERSEN FEDERAL STATE YY05-755 AWP					
Start MD [ft]	End MD [ft]	Positional Uncertainty Model	Log Name/Comment	Wellbore	Survey Date
30.00	1910.00	OWSG MWD rev2 - Standard	13.5" EVO Surface Hole OWSG MWD rev2 (MS+IFR1) <158'-1910'>	GUTTERSEN FEDERAL STATE YY05-755 AWB	9/29/2023
1910.00	17307.00	OWSG MWD rev2 (MS+IFR1)	8.5" ATC Lucida OWSG MWD rev2 (MS+IFR1) <1973'-17282'>	GUTTERSEN FEDERAL STATE YY05-755 AWB	10/2/2023

REFERENCE WELLPATH IDENTIFICATION			
Operator	NOBLE ENERGY, INC	Well	GUTTERSEN FEDERAL STATE YY05-755
Field	WELD COUNTY (NOBLE NAD 83 GRID)	API/Legal	05-123-48644
Facility	SEC.29-T03N-R63W	Wellbore	GUTTERSEN FEDERAL STATE YY05-755 AWB
Slot	SLOT#12 GUTTERSEN FEDERAL STATE YY05-755 (596'FSL & 2201'FWL,SEC.29)		

WELLPATH COMMENTS				
MD [ft]	Inclination [°]	Azimuth [°]	TVD [ft]	Comment
158.00	0.340	282.540	158.00	First BH MWD Survey
7127.14	87.853	176.804	6750.16	Cross 200' Hardline (200'FNL & 2363'FWL,SEC. 32)
7130.00	87.961	176.871	6750.27	Shallowest MD for Perf
17282.00	90.150	180.950	6736.03	Last BH MWD Surveys
17307.00	90.150	180.950	6735.97	Projection to Bit (202'FSL & 2321'FWL,SEC. 05)