

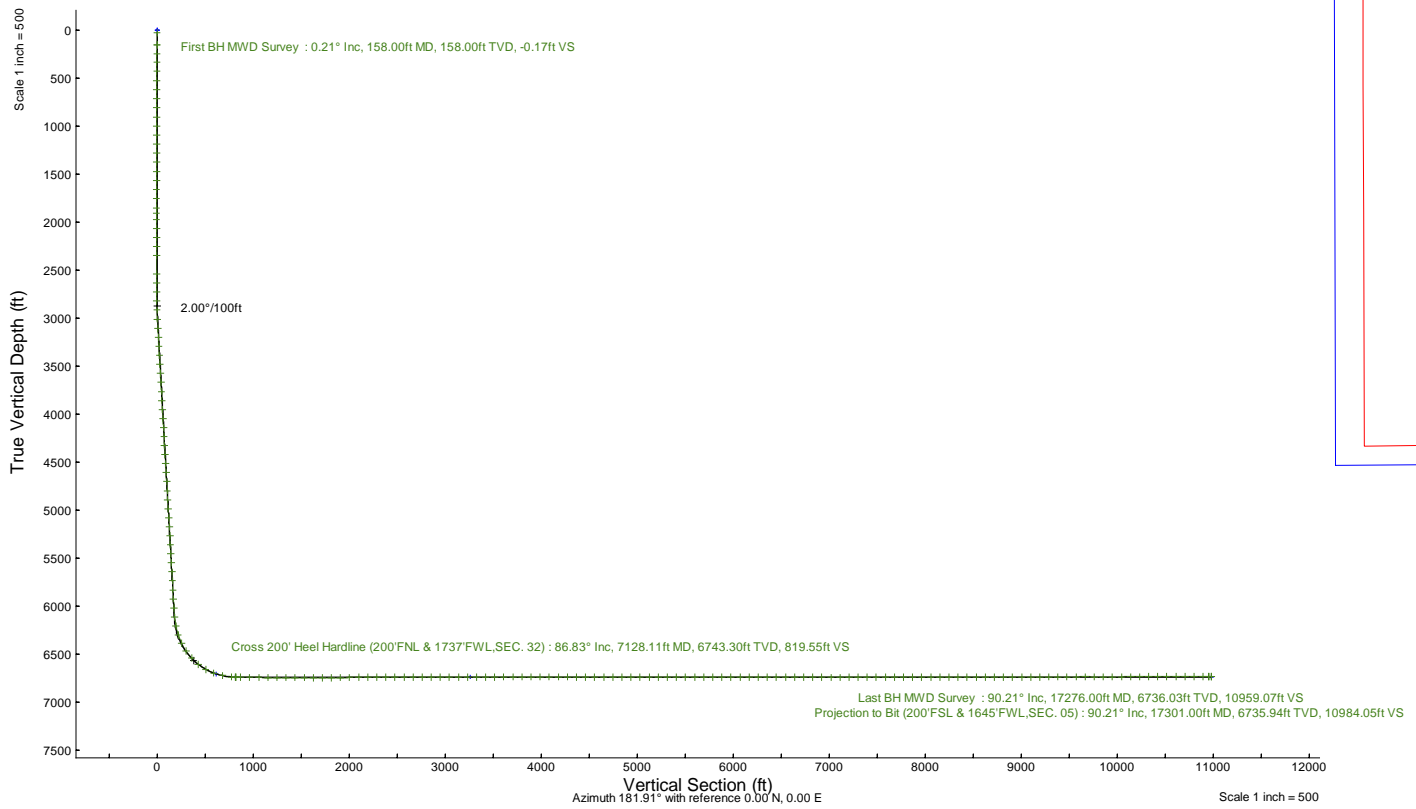
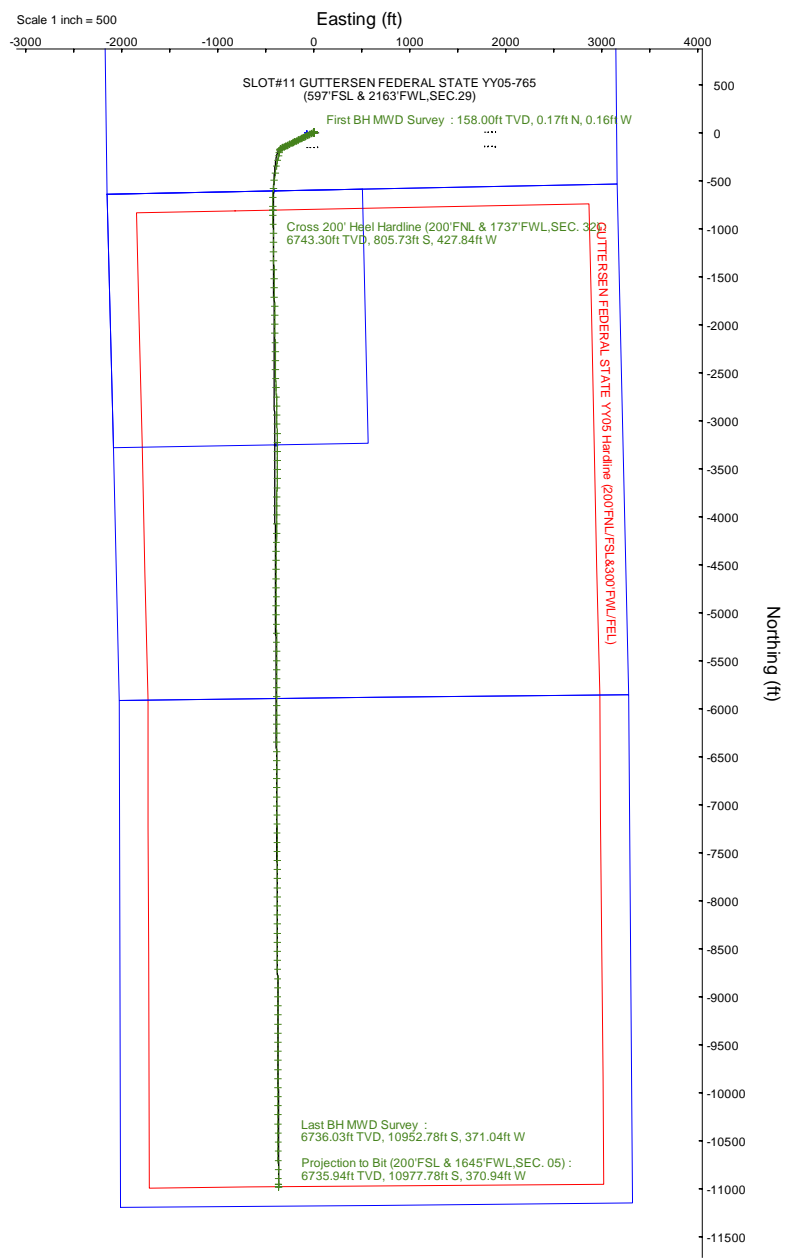
# NOBLE ENERGY, INC

Location: COLORADO Slot: SLOT#11 GUTTERSEN FEDERAL STATE YY05-765 (597FSL & 2163FWL,SEC.29)  
 Field: WELD COUNTY (NOBLE NAD 83 GRID) Well: GUTTERSEN FEDERAL STATE YY05-765  
 Facility: SEC.29-T03N-R63W Wellbore: GUTTERSEN FEDERAL STATE YY05-765 PWB

Plot reference wellpath is GUTTERSEN FEDERAL STATE YY05-765 (REV-C.0) PWP  
 True vertical depths are referenced to (4863'GL+30'KB @4893'RKB) (RKB)  
 Reference wellpath measured depths are referenced to (4863'GL+30'KB @4893'RKB) (RKB)  
 (4863'GL+30'KB @4893'RKB) (RKB) to Mean Sea Level: 4893 feet  
 Mean Sea Level to Ground level (At Slot: SLOT#11 GUTTERSEN FEDERAL STATE YY05-765 (597FSL & 2163FWL,SEC.29)): 0 feet  
 Offset wellpath MDs are referenced to each path's default MD datum  
 Grid System: NAD83 / Lambert Colorado SP, Northern Zone (501), US feet  
 North Reference: Grid north  
 Scale: True distance  
 Coordinates are in feet referenced to Slot  
 Depths are in feet  
 Created by: guenaler on 2023-11-03; Database: WA\_Denver

### Location Information

Facility Name		Grid East (US ft)	Grid North (US ft)	Latitude	Longitude	
SEC.29-T03N-R63W		3289525.528	1313900.892	40°11'25.4760"N	104°27'49.0680"W	
Slot	Local N (ft)	Local E (ft)	Grid East (US ft)	Grid North (US ft)	Latitude	Longitude
SLOT#11 GUTTERSEN FEDERAL STATE YY05-765 (597FSL & 2163FWL,SEC.29)	151.70	74.22	3289599.749	1314052.583	40°11'26.9664"N	104°27'48.0888"W
(4863'GL+30'KB @4893'RKB) (RKB) to Ground level (At Slot: SLOT#11 GUTTERSEN FEDERAL STATE YY05-765 (597FSL & 2163FWL,SEC.29))					4893ft	
Mean Sea Level to Ground level (At Slot: SLOT#11 GUTTERSEN FEDERAL STATE YY05-765 (597FSL & 2163FWL,SEC.29))					0ft	
(4863'GL+30'KB @4893'RKB) (RKB) to Mean Sea Level					4893ft	





# Actual Wellpath Report

GUTTERSEN FEDERAL STATE YY05-765 AWP  
Page 1 of 8



REFERENCE WELLPATH IDENTIFICATION			
Operator	NOBLE ENERGY, INC	Well	GUTTERSEN FEDERAL STATE YY05-765
Field	WELD COUNTY (NOBLE NAD 83 GRID)	API/Legal	05-123-48647
Facility	SEC.29-T03N-R63W	Wellbore	GUTTERSEN FEDERAL STATE YY05-765 AWB
Slot	SLOT#11 GUTTERSEN FEDERAL STATE YY05-765 (597'FSL & 2163'FWL,SEC.29)		

REPORT SETUP INFORMATION			
Projection System	NAD83 / Lambert Colorado SP, Northern Zone (501), US feet	Software System	WellArchitect® 6.0
North Reference	Grid	User	Guenaler
Scale	0.999957	Report Generated	11/3/2023 at 10:29:26 AM
Convergence at slot	0.67° East	Database	WA_Denver

WELLPATH LOCATION						
	Local coordinates		Grid coordinates		Geographic coordinates	
	North[ft]	East[ft]	Easting[US ft]	Northing[US ft]	Latitude	Longitude
Slot Location	151.70	74.22	3289599.75	1314052.58	40.1908240°	-104.4633580°
Facility Reference Pt			3289525.53	1313900.89	40.1904100°	-104.4636300°
Field Reference Pt			3000000.00	4454105.15	48.7761986°	-105.5000000°

WELLPATH DATUM			
Calculation method	Minimum curvature	(4863'GL+30'KB@4893'RKB) (RKB) to Facility Vertical Datum	4893.00ft
Horizontal Reference Pt	Slot	(4863'GL+30'KB@4893'RKB) (RKB) to Mean Sea Level	4893.00ft
Vertical Reference Pt	(4863'GL+30'KB@4893'RKB) (RKB)	(4863'GL+30'KB@4893'RKB) (RKB) to Ground Level at Slot (SLOT#11 GUTTERSEN FEDERAL STATE YY05-765 (597'FSL & 2163'FWL,SEC.29))	4893.00ft
MD Reference Pt	(4863'GL+30'KB@4893'RKB) (RKB)	Section Origin	N 0.00, E 0.00 ft
Field Vertical Reference	Mean Sea Level	Section Azimuth	181.91°



# Actual Wellpath Report

## GUTTERSEN FEDERAL STATE YY05-765 AWP

Page 2 of 8



REFERENCE WELLPATH IDENTIFICATION			
Operator	NOBLE ENERGY, INC	Well	GUTTERSEN FEDERAL STATE YY05-765
Field	WELD COUNTY (NOBLE NAD 83 GRID)	API/Legal	05-123-48647
Facility	SEC.29-T03N-R63W	Wellbore	GUTTERSEN FEDERAL STATE YY05-765 AWB
Slot	SLOT#11 GUTTERSEN FEDERAL STATE YY05-765 (597'FSL & 2163'FWL,SEC.29)		

WELLPATH DATA (187 stations) † = interpolated, ‡ = extrapolated station										
MD [ft]	Inclination [°]	Azimuth [°]	TVD [ft]	Vert Sect [ft]	North [ft]	East [ft]	Latitude	Longitude	DLS ["/100ft]	Comments
0.00†	0.000	318.110	0.00	0.00	0.00	0.00	40.1908240	-104.4633580	0.00	
30.00	0.000	318.110	30.00	0.00	0.00	0.00	40.1908240	-104.4633580	0.00	
158.00	0.210	318.110	158.00	-0.17	0.17	-0.16	40.1908245	-104.4633586	0.16	First BH MWD Survey
248.00	0.280	357.220	248.00	-0.51	0.52	-0.28	40.1908254	-104.4633590	0.20	
338.00	0.270	4.570	338.00	-0.94	0.95	-0.27	40.1908266	-104.4633589	0.04	
432.00	0.240	268.730	432.00	-1.15	1.16	-0.45	40.1908272	-104.4633596	0.40	
527.00	0.390	340.190	527.00	-1.44	1.46	-0.76	40.1908280	-104.4633607	0.41	
622.00	0.460	336.470	621.99	-2.08	2.12	-1.02	40.1908298	-104.4633616	0.08	
716.00	0.350	352.550	715.99	-2.71	2.75	-1.21	40.1908316	-104.4633622	0.17	
811.00	0.280	346.370	810.99	-3.22	3.26	-1.30	40.1908330	-104.4633625	0.08	
906.00	0.310	341.720	905.99	-3.68	3.73	-1.44	40.1908343	-104.4633630	0.04	
1000.00	0.150	322.940	999.99	-4.02	4.07	-1.59	40.1908352	-104.4633635	0.19	
1095.00	0.200	324.750	1094.99	-4.24	4.31	-1.76	40.1908359	-104.4633641	0.05	
1190.00	0.160	334.290	1189.99	-4.49	4.56	-1.91	40.1908366	-104.4633647	0.05	
1284.00	0.140	354.620	1283.99	-4.72	4.79	-1.98	40.1908372	-104.4633649	0.06	
1379.00	0.190	11.120	1378.99	-5.00	5.06	-1.96	40.1908380	-104.4633648	0.07	
1474.00	0.290	34.390	1473.99	-5.35	5.42	-1.80	40.1908389	-104.4633642	0.14	
1568.00	0.310	36.310	1567.98	-5.76	5.82	-1.51	40.1908400	-104.4633632	0.02	
1663.00	0.260	37.160	1662.98	-6.15	6.20	-1.23	40.1908410	-104.4633621	0.05	
1758.00	0.150	27.540	1757.98	-6.44	6.48	-1.04	40.1908418	-104.4633615	0.12	
1853.00	0.040	5.090	1852.98	-6.59	6.62	-0.98	40.1908422	-104.4633612	0.12	
1910.00	0.170	209.250	1909.98	-6.53	6.57	-1.02	40.1908421	-104.4633614	0.36	
1973.00	0.980	235.550	1972.98	-6.13	6.18	-1.51	40.1908410	-104.4633631	1.32	
2067.00	0.170	101.590	2066.97	-5.63	5.70	-2.04	40.1908397	-104.4633650	1.18	
2162.00	0.130	102.800	2161.97	-5.58	5.65	-1.79	40.1908396	-104.4633642	0.04	
2257.00	0.220	108.680	2256.97	-5.51	5.56	-1.52	40.1908393	-104.4633632	0.10	
2351.00	0.160	113.460	2350.97	-5.41	5.45	-1.22	40.1908390	-104.4633622	0.07	
2541.00	0.130	87.310	2540.97	-5.33	5.36	-0.77	40.1908387	-104.4633605	0.04	
2635.00	0.060	63.550	2634.97	-5.36	5.39	-0.61	40.1908388	-104.4633600	0.08	
2730.00	0.670	230.490	2729.97	-5.02	5.05	-1.00	40.1908379	-104.4633614	0.77	
2825.00	4.310	244.650	2824.86	-3.02	3.17	-4.65	40.1908329	-104.4633745	3.86	
2919.00	4.990	243.770	2918.55	0.53	-0.15	-11.51	40.1908240	-104.4633992	0.73	
3014.00	6.750	244.470	3013.05	5.05	-4.38	-20.26	40.1908126	-104.4634307	1.85	
3109.00	6.770	244.680	3107.39	10.19	-9.18	-30.36	40.1907998	-104.4634670	0.03	
3204.00	6.570	243.700	3201.75	15.32	-13.98	-40.29	40.1907869	-104.4635028	0.24	
3298.00	6.810	244.020	3295.11	20.47	-18.81	-50.12	40.1907740	-104.4635382	0.26	
3393.00	6.500	244.700	3389.47	25.56	-23.57	-60.05	40.1907612	-104.4635739	0.34	
3488.00	6.690	243.040	3483.84	30.69	-28.38	-69.84	40.1907483	-104.4636092	0.28	
3582.00	6.830	243.960	3577.19	35.95	-33.32	-79.74	40.1907351	-104.4636448	0.19	
3677.00	6.800	243.950	3671.52	41.24	-38.27	-89.87	40.1907219	-104.4636813	0.03	
3772.00	6.830	244.320	3765.84	46.49	-43.18	-100.02	40.1907087	-104.4637178	0.06	
3866.00	6.860	243.590	3859.17	51.74	-48.10	-110.08	40.1906955	-104.4637540	0.10	
3961.00	6.880	243.770	3953.49	57.12	-53.14	-120.27	40.1906820	-104.4637907	0.03	
4056.00	6.850	244.290	4047.81	62.43	-58.11	-130.47	40.1906687	-104.4638274	0.07	
4151.00	6.840	243.960	4142.13	67.71	-63.05	-140.66	40.1906554	-104.4638641	0.04	



# Actual Wellpath Report

## GUTTERSEN FEDERAL STATE YY05-765 AWP

Page 3 of 8



REFERENCE WELLPATH IDENTIFICATION			
Operator	NOBLE ENERGY, INC	Well	GUTTERSEN FEDERAL STATE YY05-765
Field	WELD COUNTY (NOBLE NAD 83 GRID)	API/Legal	05-123-48647
Facility	SEC.29-T03N-R63W	Wellbore	GUTTERSEN FEDERAL STATE YY05-765 AWB
Slot	SLOT#11 GUTTERSEN FEDERAL STATE YY05-765 (597'FSL & 2163'FWL,SEC.29)		

WELLPATH DATA (187 stations) † = interpolated, ‡ = extrapolated station										
MD [ft]	Inclination [°]	Azimuth [°]	TVD [ft]	Vert Sect [ft]	North [ft]	East [ft]	Latitude	Longitude	DLS [°/100ft]	Comments
4245.00	6.910	244.000	4235.46	72.98	-67.99	-150.77	40.1906422	-104.4639005	0.07	
4340.00	7.170	243.520	4329.74	78.47	-73.14	-161.22	40.1906284	-104.4639381	0.28	
4435.00	7.260	243.560	4423.99	84.14	-78.46	-171.90	40.1906142	-104.4639765	0.09	
4530.00	7.210	243.720	4518.23	89.81	-83.77	-182.62	40.1905999	-104.4640151	0.06	
4624.00	7.100	244.060	4611.50	95.31	-88.92	-193.13	40.1905861	-104.4640530	0.13	
4719.00	7.170	244.000	4705.77	100.83	-94.09	-203.74	40.1905723	-104.4640911	0.07	
4814.00	7.140	243.630	4800.03	106.40	-99.31	-214.36	40.1905583	-104.4641294	0.06	
4908.00	7.060	243.390	4893.31	111.92	-104.49	-224.76	40.1905444	-104.4641668	0.09	
5003.00	7.070	244.670	4987.58	117.39	-109.61	-235.26	40.1905307	-104.4642046	0.17	
5098.00	7.120	243.680	5081.86	122.85	-114.72	-245.82	40.1905170	-104.4642426	0.14	
5192.00	7.220	243.470	5175.12	128.42	-119.94	-256.33	40.1905030	-104.4642804	0.11	
5287.00	6.880	244.340	5269.40	133.89	-125.07	-266.80	40.1904893	-104.4643181	0.38	
5382.00	6.740	243.470	5363.73	139.18	-130.03	-276.92	40.1904760	-104.4643545	0.18	
5476.00	6.870	244.510	5457.07	144.40	-134.91	-286.93	40.1904629	-104.4643906	0.19	
5571.00	6.700	243.840	5551.41	149.62	-139.80	-297.03	40.1904498	-104.4644269	0.20	
5666.00	6.860	244.180	5645.74	154.87	-144.71	-307.11	40.1904366	-104.4644632	0.17	
5760.00	6.960	244.020	5739.06	160.14	-149.65	-317.28	40.1904234	-104.4644998	0.11	
5855.00	6.870	244.540	5833.37	165.45	-154.62	-327.59	40.1904101	-104.4645369	0.12	
5949.00	6.930	244.320	5926.69	170.66	-159.49	-337.77	40.1903971	-104.4645736	0.07	
6044.00	7.130	242.790	6020.97	176.18	-164.67	-348.18	40.1903832	-104.4646111	0.29	
6139.00	6.990	200.130	6115.31	184.55	-172.80	-355.42	40.1903611	-104.4646373	5.40	
6233.00	9.570	191.010	6208.33	197.70	-185.84	-358.88	40.1903254	-104.4646502	3.07	
6328.00	17.530	190.340	6300.61	219.69	-207.70	-362.96	40.1902655	-104.4646658	8.38	
6423.00	25.600	190.010	6388.89	254.21	-242.05	-369.11	40.1901715	-104.4646892	8.50	
6517.00	34.940	193.100	6469.99	300.83	-288.37	-378.76	40.1900446	-104.4647257	10.07	
6612.00	43.290	191.240	6543.64	359.76	-346.91	-391.30	40.1898843	-104.4647730	8.87	
6707.00	51.160	187.920	6608.11	428.82	-415.62	-402.77	40.1896961	-104.4648169	8.67	
6801.00	61.360	188.180	6660.25	506.43	-492.92	-413.71	40.1894843	-104.4648593	10.85	
6896.00	69.820	184.530	6699.49	592.59	-578.81	-423.18	40.1892489	-104.4648968	9.57	
6991.00	78.090	181.190	6725.73	683.78	-669.90	-427.68	40.1889990	-104.4649167	9.34	
7085.00	84.420	179.530	6740.01	776.61	-762.76	-428.25	40.1887441	-104.4649226	6.96	
7128.11†	86.825	179.389	6743.30	819.55	-805.73	-427.84	40.1886261	-104.4649230	5.59	Cross 200' Heel Hardline (200'FNL & 1737'FWL,SEC. 32)
7131.00†	86.986	179.380	6743.46	822.43	-808.62	-427.81	40.1886182	-104.4649230	5.59	Shallowest MD for Perf
7180.00	89.720	179.220	6744.87	871.35	-857.59	-427.21	40.1884838	-104.4649229	5.59	
7275.00	89.690	178.800	6745.36	966.23	-952.58	-425.57	40.1882230	-104.4649210	0.44	
7369.00	89.850	179.000	6745.73	1060.10	-1046.56	-423.77	40.1879650	-104.4649184	0.27	
7464.00	89.970	179.110	6745.88	1154.98	-1141.54	-422.20	40.1877042	-104.4649168	0.17	
7559.00	89.880	179.390	6746.01	1249.88	-1236.54	-420.96	40.1874434	-104.4649163	0.31	
7653.00	89.780	178.850	6746.29	1343.77	-1330.52	-419.51	40.1871854	-104.4649151	0.58	
7748.00	89.910	179.280	6746.54	1438.65	-1425.51	-417.96	40.1869246	-104.4649135	0.47	
7843.00	89.850	179.070	6746.74	1533.54	-1520.50	-416.60	40.1866639	-104.4649126	0.23	
7937.00	89.750	178.770	6747.07	1627.41	-1614.48	-414.82	40.1864058	-104.4649101	0.34	
8032.00	89.880	178.890	6747.38	1722.28	-1709.46	-412.88	40.1861451	-104.4649072	0.19	
8126.00	90.280	178.640	6747.25	1816.13	-1803.44	-410.86	40.1858871	-104.4649038	0.50	
8221.00	90.430	179.040	6746.66	1911.00	-1898.42	-408.94	40.1856263	-104.4649009	0.45	



# Actual Wellpath Report

## GUTTERSEN FEDERAL STATE YY05-765 AWP

Page 4 of 8



REFERENCE WELLPATH IDENTIFICATION			
Operator	NOBLE ENERGY, INC	Well	GUTTERSEN FEDERAL STATE YY05-765
Field	WELD COUNTY (NOBLE NAD 83 GRID)	API/Legal	05-123-48647
Facility	SEC.29-T03N-R63W	Wellbore	GUTTERSEN FEDERAL STATE YY05-765 AWB
Slot	SLOT#11 GUTTERSEN FEDERAL STATE YY05-765 (597'FSL & 2163'FWL,SEC.29)		

WELLPATH DATA (187 stations)										
MD [ft]	Inclination [°]	Azimuth [°]	TVD [ft]	Vert Sect [ft]	North [ft]	East [ft]	Latitude	Longitude	DLS [°/100ft]	Comments
8316.00	90.990	179.860	6745.48	2005.90	-1993.41	-408.02	40.1853656	-104.4649016	1.05	
8410.00	90.060	178.540	6744.62	2099.79	-2087.39	-406.71	40.1851075	-104.4649009	1.72	
8505.00	90.180	179.400	6744.42	2194.66	-2182.37	-405.00	40.1848468	-104.4648987	0.91	
8600.00	90.280	179.580	6744.04	2289.58	-2277.37	-404.16	40.1845860	-104.4648997	0.22	
8694.00	90.090	179.120	6743.74	2383.48	-2371.36	-403.09	40.1843280	-104.4648998	0.53	
8789.00	90.310	179.340	6743.40	2478.38	-2466.35	-401.81	40.1840672	-104.4648992	0.33	
8884.00	89.780	177.710	6743.33	2573.21	-2561.32	-399.37	40.1838065	-104.4648944	1.80	
8978.00	90.030	176.950	6743.48	2666.91	-2655.22	-394.99	40.1835486	-104.4648826	0.85	
9073.00	90.060	178.840	6743.41	2761.67	-2750.15	-391.50	40.1832879	-104.4648741	1.99	
9168.00	90.400	179.040	6743.03	2856.54	-2845.13	-389.74	40.1830271	-104.4648718	0.42	
9262.00	90.060	178.890	6742.65	2950.41	-2939.11	-388.05	40.1827691	-104.4648696	0.40	
9357.00	90.250	178.830	6742.39	3045.28	-3034.09	-386.16	40.1825084	-104.4648669	0.21	
9452.00	90.430	178.740	6741.83	3140.14	-3129.07	-384.14	40.1822476	-104.4648636	0.21	
9546.00	90.060	178.910	6741.43	3234.00	-3223.05	-382.21	40.1819896	-104.4648606	0.43	
9641.00	90.060	178.650	6741.33	3328.86	-3318.03	-380.19	40.1817288	-104.4648574	0.27	
9736.00	90.460	181.330	6740.90	3423.79	-3413.02	-380.17	40.1814681	-104.4648613	2.85	
9830.00	90.150	180.980	6740.40	3517.78	-3507.00	-382.07	40.1812102	-104.4648720	0.50	
9925.00	90.310	180.790	6740.02	3612.77	-3601.99	-383.54	40.1809495	-104.4648812	0.26	
10020.00	90.400	180.920	6739.43	3707.75	-3696.97	-384.95	40.1806888	-104.4648902	0.17	
10114.00	89.780	180.870	6739.28	3801.74	-3790.96	-386.42	40.1804309	-104.4648994	0.66	
10209.00	90.060	180.610	6739.41	3896.72	-3885.95	-387.65	40.1801702	-104.4649078	0.40	
10304.00	90.150	180.680	6739.24	3991.69	-3980.95	-388.72	40.1799095	-104.4649156	0.12	
10398.00	89.570	180.510	6739.47	4085.67	-4074.94	-389.70	40.1796515	-104.4649230	0.64	
10493.00	89.970	180.760	6739.85	4180.64	-4169.93	-390.75	40.1793908	-104.4649307	0.50	
10587.00	89.870	180.700	6739.98	4274.62	-4263.93	-391.95	40.1791329	-104.4649389	0.12	
10682.00	90.000	180.620	6740.09	4369.60	-4358.92	-393.04	40.1788722	-104.4649468	0.16	
10777.00	89.470	180.640	6740.53	4464.57	-4453.91	-394.08	40.1786115	-104.4649545	0.56	
10872.00	89.690	179.710	6741.22	4559.53	-4548.91	-394.37	40.1783507	-104.4649595	1.01	
10966.00	89.780	179.440	6741.66	4653.45	-4642.91	-393.68	40.1780927	-104.4649610	0.30	
11061.00	90.000	179.620	6741.84	4748.37	-4737.90	-392.90	40.1778319	-104.4649622	0.30	
11156.00	89.930	180.090	6741.90	4843.30	-4832.90	-392.66	40.1775712	-104.4649653	0.50	
11250.00	90.030	180.130	6741.93	4937.26	-4926.90	-392.84	40.1773132	-104.4649698	0.11	
11345.00	89.810	180.010	6742.07	5032.21	-5021.90	-392.95	40.1770524	-104.4649742	0.26	
11440.00	89.810	179.550	6742.38	5127.14	-5116.90	-392.59	40.1767916	-104.4649769	0.48	
11535.00	89.970	179.590	6742.56	5222.06	-5211.90	-391.88	40.1765309	-104.4649783	0.17	
11629.00	89.750	179.650	6742.79	5315.99	-5305.89	-391.25	40.1762728	-104.4649800	0.24	
11724.00	89.780	179.290	6743.18	5410.90	-5400.89	-390.37	40.1760121	-104.4649808	0.38	
11819.00	90.120	180.570	6743.27	5505.84	-5495.89	-390.26	40.1757513	-104.4649844	1.39	
11914.00	89.840	179.640	6743.30	5600.79	-5590.89	-390.43	40.1754906	-104.4649890	1.02	
12008.00	90.030	179.770	6743.40	5694.72	-5684.88	-389.95	40.1752325	-104.4649912	0.24	
12103.00	89.840	179.710	6743.51	5789.65	-5779.88	-389.52	40.1749718	-104.4649936	0.21	
12198.00	89.840	179.650	6743.78	5884.58	-5874.88	-388.99	40.1747110	-104.4649956	0.06	
12292.00	90.000	180.130	6743.91	5978.52	-5968.88	-388.81	40.1744530	-104.4649989	0.54	
12387.00	89.750	179.550	6744.12	6073.46	-6063.88	-388.54	40.1741922	-104.4650019	0.66	
12482.00	90.370	180.090	6744.02	6168.40	-6158.88	-388.24	40.1739315	-104.4650048	0.87	



# Actual Wellpath Report

## GUTTERSEN FEDERAL STATE YY05-765 AWP

Page 5 of 8



REFERENCE WELLPATH IDENTIFICATION			
Operator	NOBLE ENERGY, INC	Well	GUTTERSEN FEDERAL STATE YY05-765
Field	WELD COUNTY (NOBLE NAD 83 GRID)	API/Legal	05-123-48647
Facility	SEC.29-T03N-R63W	Wellbore	GUTTERSEN FEDERAL STATE YY05-765 AWB
Slot	SLOT#11 GUTTERSEN FEDERAL STATE YY05-765 (597'FSL & 2163'FWL,SEC.29)		

WELLPATH DATA (187 stations)										
MD [ft]	Inclination [°]	Azimuth [°]	TVD [ft]	Vert Sect [ft]	North [ft]	East [ft]	Latitude	Longitude	DLS [°/100ft]	Comments
12577.00	89.970	180.410	6743.74	6263.36	-6253.88	-388.66	40.1736707	-104.4650103	0.54	
12671.00	89.970	179.640	6743.78	6357.30	-6347.88	-388.70	40.1734127	-104.4650144	0.82	
12766.00	89.750	179.220	6744.02	6452.22	-6442.87	-387.75	40.1731519	-104.4650150	0.50	
12861.00	89.930	179.880	6744.28	6547.13	-6537.87	-387.01	40.1728912	-104.4650163	0.72	
12955.00	90.000	179.960	6744.34	6641.08	-6631.87	-386.88	40.1726332	-104.4650197	0.11	
13050.00	89.970	179.820	6744.36	6736.02	-6726.87	-386.69	40.1723724	-104.4650230	0.15	
13145.00	89.900	180.190	6744.47	6830.97	-6821.87	-386.70	40.1721116	-104.4650270	0.40	
13240.00	89.720	179.610	6744.79	6925.91	-6916.87	-386.54	40.1718509	-104.4650304	0.64	
13334.00	89.970	180.040	6745.04	7019.84	-7010.86	-386.25	40.1715929	-104.4650333	0.53	
13429.00	90.090	179.700	6744.99	7114.78	-7105.86	-386.03	40.1713321	-104.4650365	0.38	
13524.00	90.090	179.520	6744.84	7209.71	-7200.86	-385.39	40.1710713	-104.4650381	0.19	
13618.00	89.900	179.460	6744.85	7303.62	-7294.86	-384.55	40.1708133	-104.4650391	0.21	
13713.00	90.270	180.300	6744.71	7398.56	-7389.86	-384.35	40.1705525	-104.4650423	0.97	
13807.00	90.150	179.820	6744.36	7492.51	-7483.86	-384.45	40.1702945	-104.4650466	0.53	
13902.00	90.060	179.400	6744.19	7587.43	-7578.85	-383.80	40.1700338	-104.4650483	0.45	
13997.00	90.030	179.990	6744.12	7682.36	-7673.85	-383.30	40.1697730	-104.4650504	0.62	
14091.00	90.060	179.760	6744.04	7776.30	-7767.85	-383.09	40.1695150	-104.4650536	0.25	
14186.00	90.370	179.970	6743.69	7871.24	-7862.85	-382.87	40.1692542	-104.4650568	0.39	
14281.00	90.000	179.840	6743.38	7966.18	-7957.85	-382.71	40.1689934	-104.4650602	0.41	
14375.00	90.180	179.600	6743.23	8060.11	-8051.85	-382.25	40.1687354	-104.4650625	0.32	
14470.00	89.900	179.150	6743.17	8155.02	-8146.84	-381.21	40.1684746	-104.4650627	0.56	
14565.00	90.240	180.180	6743.05	8249.95	-8241.84	-380.66	40.1682139	-104.4650647	1.14	
14659.00	90.520	180.240	6742.43	8343.90	-8335.84	-381.00	40.1679559	-104.4650699	0.30	
14754.00	90.090	179.680	6741.92	8438.85	-8430.83	-380.94	40.1676951	-104.4650736	0.74	
14849.00	89.930	179.580	6741.90	8533.77	-8525.83	-380.32	40.1674344	-104.4650754	0.20	
14943.00	90.060	179.680	6741.91	8627.70	-8619.83	-379.72	40.1671763	-104.4650771	0.17	
15038.00	90.090	179.440	6741.79	8722.62	-8714.83	-378.99	40.1669156	-104.4650785	0.25	
15133.00	90.210	179.990	6741.54	8817.55	-8809.82	-378.51	40.1666548	-104.4650808	0.59	
15227.00	90.150	179.790	6741.24	8911.49	-8903.82	-378.33	40.1663968	-104.4650840	0.22	
15322.00	90.430	179.370	6740.76	9006.41	-8998.82	-377.64	40.1661360	-104.4650855	0.53	
15417.00	90.090	180.010	6740.33	9101.33	-9093.82	-377.12	40.1658752	-104.4650876	0.76	
15511.00	90.210	179.620	6740.09	9195.27	-9187.82	-376.82	40.1656172	-104.4650905	0.43	
15606.00	90.120	179.830	6739.81	9290.20	-9282.81	-376.36	40.1653564	-104.4650928	0.24	
15700.00	90.180	179.620	6739.57	9384.13	-9376.81	-375.91	40.1650984	-104.4650951	0.23	
15795.00	90.030	179.950	6739.39	9479.07	-9471.81	-375.56	40.1648377	-104.4650978	0.38	
15890.00	90.180	179.880	6739.22	9574.01	-9566.81	-375.42	40.1645769	-104.4651013	0.17	
15984.00	90.060	179.710	6739.02	9667.94	-9660.81	-375.08	40.1643189	-104.4651040	0.22	
16079.00	89.440	179.440	6739.43	9762.86	-9755.81	-374.37	40.1640581	-104.4651054	0.71	
16174.00	90.060	179.700	6739.85	9857.78	-9850.80	-373.66	40.1637973	-104.4651069	0.71	
16268.00	90.120	179.860	6739.70	9951.72	-9944.80	-373.30	40.1635393	-104.4651095	0.18	
16363.00	90.460	179.840	6739.22	10046.66	-10039.80	-373.05	40.1632785	-104.4651126	0.36	
16458.00	90.120	180.070	6738.74	10141.60	-10134.80	-372.98	40.1630178	-104.4651163	0.43	
16552.00	90.370	180.040	6738.34	10235.55	-10228.80	-373.07	40.1627598	-104.4651205	0.27	
16647.00	90.240	179.790	6737.83	10330.49	-10323.80	-372.93	40.1624990	-104.4651240	0.30	
16742.00	89.900	179.450	6737.72	10425.41	-10418.79	-372.30	40.1622383	-104.4651257	0.51	



# Actual Wellpath Report

## GUTTERSEN FEDERAL STATE YY05-765 AWP

Page 6 of 8



REFERENCE WELLPATH IDENTIFICATION			
Operator	NOBLE ENERGY, INC	Well	GUTTERSEN FEDERAL STATE YY05-765
Field	WELD COUNTY (NOBLE NAD 83 GRID)	API/Legal	05-123-48647
Facility	SEC.29-T03N-R63W	Wellbore	GUTTERSEN FEDERAL STATE YY05-765 AWB
Slot	SLOT#11 GUTTERSEN FEDERAL STATE YY05-765 (597'FSL & 2163'FWL,SEC.29)		

WELLPATH DATA (187 stations) † = interpolated, ‡ = extrapolated station										
MD [ft]	Inclination [°]	Azimuth [°]	TVD [ft]	Vert Sect [ft]	North [ft]	East [ft]	Latitude	Longitude	DLS [°/100ft]	Comments
16836.00	90.300	180.260	6737.55	10519.35	-10512.79	-372.06	40.1619802	-104.4651288	0.96	
16931.00	90.330	180.180	6737.03	10614.31	-10607.79	-372.42	40.1617195	-104.4651340	0.09	
17026.00	89.970	179.430	6736.78	10709.24	-10702.79	-372.10	40.1614587	-104.4651368	0.88	
17120.00	90.330	179.760	6736.54	10803.17	-10796.79	-371.44	40.1612007	-104.4651384	0.52	
17215.00	90.090	179.940	6736.19	10898.10	-10891.78	-371.19	40.1609399	-104.4651415	0.32	
17276.00	90.210	179.780	6736.03	10959.07	-10952.78	-371.04	40.1607725	-104.4651435	0.33	Last BH MWD Survey
17301.00‡	90.210	179.780	6735.94	10984.05	-10977.78	-370.94	40.1607039	-104.4651442	0.00	Projection to Bit (200'FSL & 1645'FWL,SEC. 05)

TARGETS								
Name	TVD [ft]	North [ft]	East [ft]	Grid East [US ft]	Grid North [US ft]	Latitude	Longitude	Shape
GUTTERSEN STATE YY05 SEC.05-T02N-R63W New Plat (4-12-23)	0.00	-0.15	-74.88	3289524.87	1314052.44	40.1908260	-104.4636260	polygon
2D Polygon: dimensions not calculated								
GUTTERSEN STATE YY05 SEC.29-T03N-R63W New Plat (4-12-23)	0.00	-0.15	-74.88	3289524.87	1314052.44	40.1908260	-104.4636260	polygon
2D Polygon: dimensions not calculated								
GUTTERSEN STATE YY05 SEC.32-T03N-R63W New Plat (4-12-23)	0.00	-0.15	-74.88	3289524.87	1314052.44	40.1908260	-104.4636260	polygon
2D Polygon: dimensions not calculated								
GUTTERSEN FEDERAL YY05-765 Enter Federal Minerals (0'FNL&1738'FWL,SEC.32)	6708.53	-605.68	-413.73	<b>3289186.04</b>	<b>1313446.93</b>	40.1891748	-104.4648641	point
GUTTERSEN FEDERAL YY05-765 BHL REV-2 (200'FSL & 1650'FWL,SEC.05)	6741.00	-10978.41	-366.13	3289233.63	1303074.66	<b>40.1607020</b>	<b>-104.4651270</b>	point
GUTTERSEN FEDERAL YY05-765 Exit Federal Minerals (2643'FNL&1696'FWL,SEC.32)	6741.00	-3249.02	-394.67	<b>3289205.10</b>	<b>1310803.71</b>	40.1819187	-104.4649063	point
GUTTERSEN FEDERAL YY05-765 LP /TPZ REV-2 (200'FNL & 1733'FWL,SEC.32)	6741.00	-805.73	-423.67	3289176.10	1313246.89	<b>40.1886260</b>	<b>-104.4649080</b>	point
GUTTERSEN FEDERAL STATE YY05 Hardline (200'FNL/FSL&300'FWL/FEL)	7000.00	-0.15	-74.88	3289524.87	1314052.44	40.1908260	-104.4636260	polygon
2D Polygon: dimensions not calculated								
DP 423 Fed Minerals New Plat (4-12-23)	7199.00	-0.15	-74.88	3289524.87	1314052.44	40.1908260	-104.4636260	polygon
2D Polygon: dimensions not calculated								



# Actual Wellpath Report

GUTTERSEN FEDERAL STATE YY05-765 AWP  
Page 7 of 8



REFERENCE WELLPATH IDENTIFICATION			
Operator	NOBLE ENERGY, INC	Well	GUTTERSEN FEDERAL STATE YY05-765
Field	WELD COUNTY (NOBLE NAD 83 GRID)	API/Legal	05-123-48647
Facility	SEC.29-T03N-R63W	Wellbore	GUTTERSEN FEDERAL STATE YY05-765 AWB
Slot	SLOT#11 GUTTERSEN FEDERAL STATE YY05-765 (597'FSL & 2163'FWL,SEC.29)		

WELLPATH COMPOSITION - Ref Wellbore: GUTTERSEN FEDERAL STATE YY05-765 AWB    Ref Wellpath: GUTTERSEN FEDERAL STATE YY05-765 AWP					
Start MD [ft]	End MD [ft]	Positional Uncertainty Model	Log Name/Comment	Wellbore	Survey Date
30.00	1910.00	OWSG MWD rev2 (MS+IFR1)	13.5" EVO Surface OWSG MWD rev2 (MS+IFR1)	GUTTERSEN FEDERAL STATE YY05-765 AWB	9/29/2023
1910.00	17301.00	OWSG MWD rev2 (MS+IFR1)	8.5" ATC Lucida OWSG MWD rev2 (MS+IFR1) <1973'-17276'>	GUTTERSEN FEDERAL STATE YY05-765 AWB	10/6/2023



# Actual Wellpath Report

GUTTERSEN FEDERAL STATE YY05-765 AWP  
Page 8 of 8



REFERENCE WELLPATH IDENTIFICATION			
Operator	NOBLE ENERGY, INC	Well	GUTTERSEN FEDERAL STATE YY05-765
Field	WELD COUNTY (NOBLE NAD 83 GRID)	API/Legal	05-123-48647
Facility	SEC.29-T03N-R63W	Wellbore	GUTTERSEN FEDERAL STATE YY05-765 AWB
Slot	SLOT#11 GUTTERSEN FEDERAL STATE YY05-765 (597'FSL & 2163'FWL,SEC.29)		

WELLPATH COMMENTS				
MD [ft]	Inclination [°]	Azimuth [°]	TVD [ft]	Comment
158.00	0.210	318.110	158.00	First BH MWD Survey
7128.11	86.825	179.389	6743.30	Cross 200' Heel Hardline (200'FNL & 1737'FWL,SEC. 32)
7131.00	86.986	179.380	6743.46	Shallowest MD for Perf
17276.00	90.210	179.780	6736.03	Last BH MWD Survey
17301.00	90.210	179.780	6735.94	Projection to Bit (200'FSL & 1645'FWL,SEC. 05)