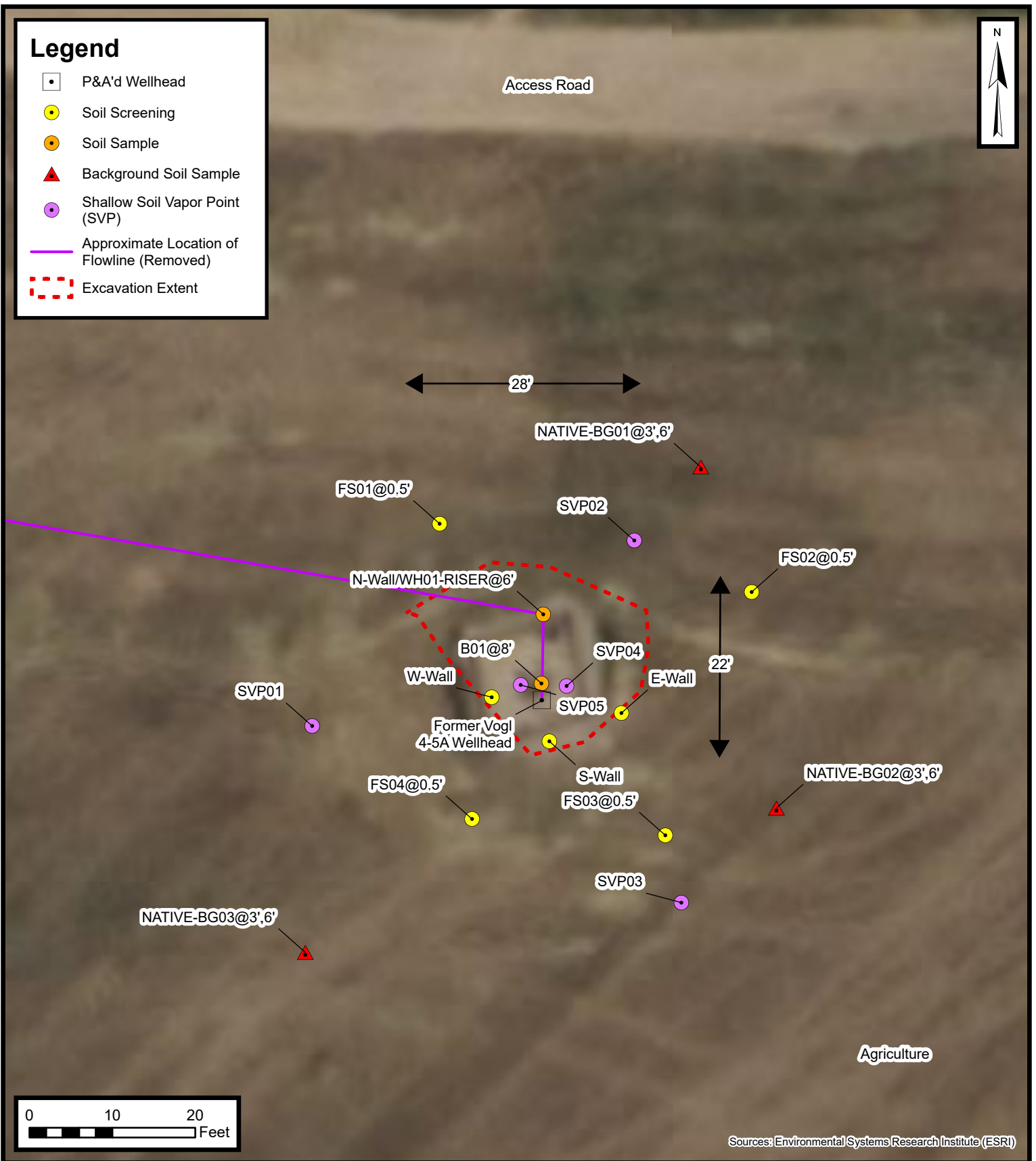


## Legend

- P&A'd Wellhead
- Soil Screening
- Soil Sample
- Background Soil Sample
- Shallow Soil Vapor Point (SVP)
- Approximate Location of Flowline (Removed)
- Excavation Extent



## Wellhead Excavation Site Map

Vogl 4-5A Wellhead  
Kerr-McGee Oil and Gas Onshore, LP  
NWNW SEC 5-T2N-R67W  
Weld County, Colorado

Project Number: 09A1417332

FIGURE

1