



Bison IV Operating, LLC

PLUG & ABANDON POST JOB REPORT

ROTH #14-7 05-123-14336
S:7 T:7N R:59W Weld CO

CallSheet #: 88843
Proposal #: 71911

Job Details & Summary

Geometry

Type	Function	OD (in)	ID (in)	Weight (lb/ft)	Top (ft)	Bottom (ft)	Excess (%)
Casing	Outer	8.625	8.097	24	0	259	0
Open Hole	Outer		7.875		259	6920	0
Tubing	Inner	2.875	2.441	6.4	0	6790	0

Equipment / People

Unit Type	Unit
Cement Trailer Float	CTF-408
Cement Trailer Float	CTF-574
Cement Pump Float	CPF-074
Cement Utility Float	CUF-159

Timing

Event	Date/Time
ERTS	10/12/2023 00:00
Call Out	10/13/2023 15:00
Depart Facility	10/13/2023 19:00
On Location	10/13/2023 21:00
Rig Up Iron	10/13/2023 21:15
Job Started	10/13/2023 22:58
Job Completed	10/14/2023 05:00
Rig Down Iron	10/14/2023 05:15
Depart Location	10/14/2023 06:20

General Job Information

Metrics	Value
Well Fluid Density	9 lb/gal
Well Fluid Type	WBM
Rig Circulation Vol	300 bbls
Rig Circulation Time	2 hours
Calculated Displacement	38 bbls
Actual Displacement	31 bbls
Total Spacer to Surface	0 bbls
Total CMT to Surface	0 bbls
Well Topped Out	No

Job Details

Metrics	Value
Flare Prior to Job	No
Flare Prior to Job	0 units
Flare During Job	No
Flare During Job	0 units
Flare at End of Job	No
Flare at End of Job	0 units
Well Full Prior to Job	Yes
Well Fluid Density Into Well	9 lb/gal
Well Fluid Density Out of Well	9 lb/gal

Job Details (cont.)

Metrics	Value
BHCT	174 °F
BHST	210 °F

Water Analysis

Metrics	Value	Recommended
Water Source	Flat Tank	
Temperature	60 °F	50-80 °F
pH Level	7	5.5-8.5
Chlorides	0 mg/L	0-3000 mg/L
Total Alkalinity	180	0-1000
Total Hardness	125 mg/L	0-500 mg/L
Carbonates	140 mg/L	0-100 mg/L
Sulfates	<200 mg/L	0-1500 mg/L
Potassium	450 mg/L	0-3000 mg/L
Iron	0 mg/L	0-300 mg/L

Circulation

Lost Circulation Experienced
No



Job Execution Information

Fluid	Product	Function	Density (lb/gal)	Yield (ft ³ /sk)	Water Rq. (gal/sk)	Water Rq. (gal/bbl)	Volume (sks)	Volume (bbl)	Designed Top (ft)
1	Flush Ahead Plug-1	Flush	8.34			42.00		20.00	0
2	Plug-1: (6790')	Plug	15.80	1.16	5.01		60.00	12.44	0
3	Plug-1 Displacement	Displacement	8.34			42.00		53.00	0

Job Fluid Details

Fluid	Type	Fluid	Product	Function	Conc.	Uom
2	Plug	Plug-1: (6790')	CLASS G	Cement	100.00	%
2	Plug	Plug-1: (6790')	A-7P	Accelerator	2.00	%BWOB

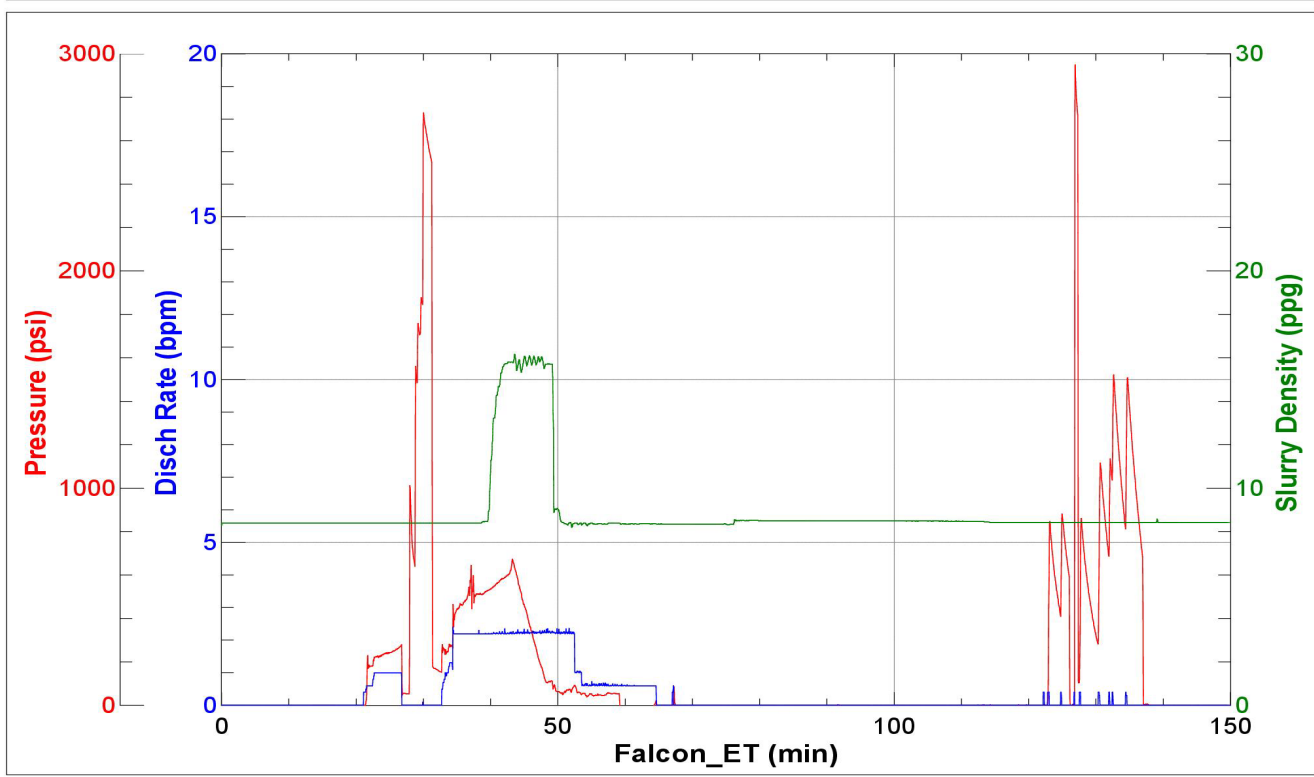
Job Logs

Line	Event	Date (MM/DD/YY)	Time (HH:MM)	Density (lb/gal)	Pump Rate (bpm)	Pump Volume (bbls)	Pipe Pressure (psi)	Comment
1	Callout	10/13/2023	15:00					Crew was called for a O/L request of 22:00
2	Depart Yard	10/13/2023	19:00					Crew departed CWY yard
3	Arrive On Location	10/13/2023	21:00					Crew arrived on location rig was circulating well
4	Rig Up Iron	10/13/2023	21:15					Rigup and spot equipment
5	Safety Meeting	10/13/2023	22:20					Safety meeting with rig crew and OSR, Job procedure was gone over, Annulus volume was unknow piror to starting.
6	Fill Lines	10/13/2023	22:58	8.34	1	5	220	Fill lines with 5 bbl's H2O
7	Pressure Test Lines	10/13/2023	23:08				2730	Pressure test lines to 2730 psi
8	Pump Flush	10/13/2023	23:11	8.34	2.2	20	420	Pump 20 bbl H2O flush
9	Pump Cement	10/13/2023	23:20	15.8	2.2	12.4	100	Pump 12.4 bbl's 15.8 ppg CMT (60 sk, 1.16 yld, 5.0 g/sk)
10	Pump Displacement	10/13/2023	23:26	8.34	1	38	75	Start pumping 38 bbl H2O displacement
11	Shutdown	10/13/2023	23:42			31	70	Shutdown 31 bbl's into displacement to balance plug, Calculated TOC 5345'
12	Rig POOH	10/13/2023	23:55					Rig POOH to 6148'
13	Pump Flush	10/14/2023	00:40	8.34	1	1	800	Tried to pump a H2O flush to make sure we could circulate before pumping Plug# 2, We pumped 1 bbl and pressured up to 800 psi
14	Pressure Up Line	10/14/2023	00:45					Per OSR took pressure up to 1500 psi, Unable to get circulation
15	Rig POOH	10/14/2023	00:55					OSR had Rig pull Tubing to surface
16	Released from Location	10/14/2023	05:00					Rig pulled 40 joints with CMT and was going to have mill back down so OSR released the crew from location
17	Rig Down Iron	10/14/2023	05:20					Rig down pumps and iron
18	Depart Location	10/14/2023	06:20					Depart location

Pump Diagrams



JobMaster Program Version 5.01C1
 Job Number: 88843
 Customer: Bison IV Operating, LLC
 Well Name: Roth 14-7 Plug #1



Job Start: Friday, October 13, 2023